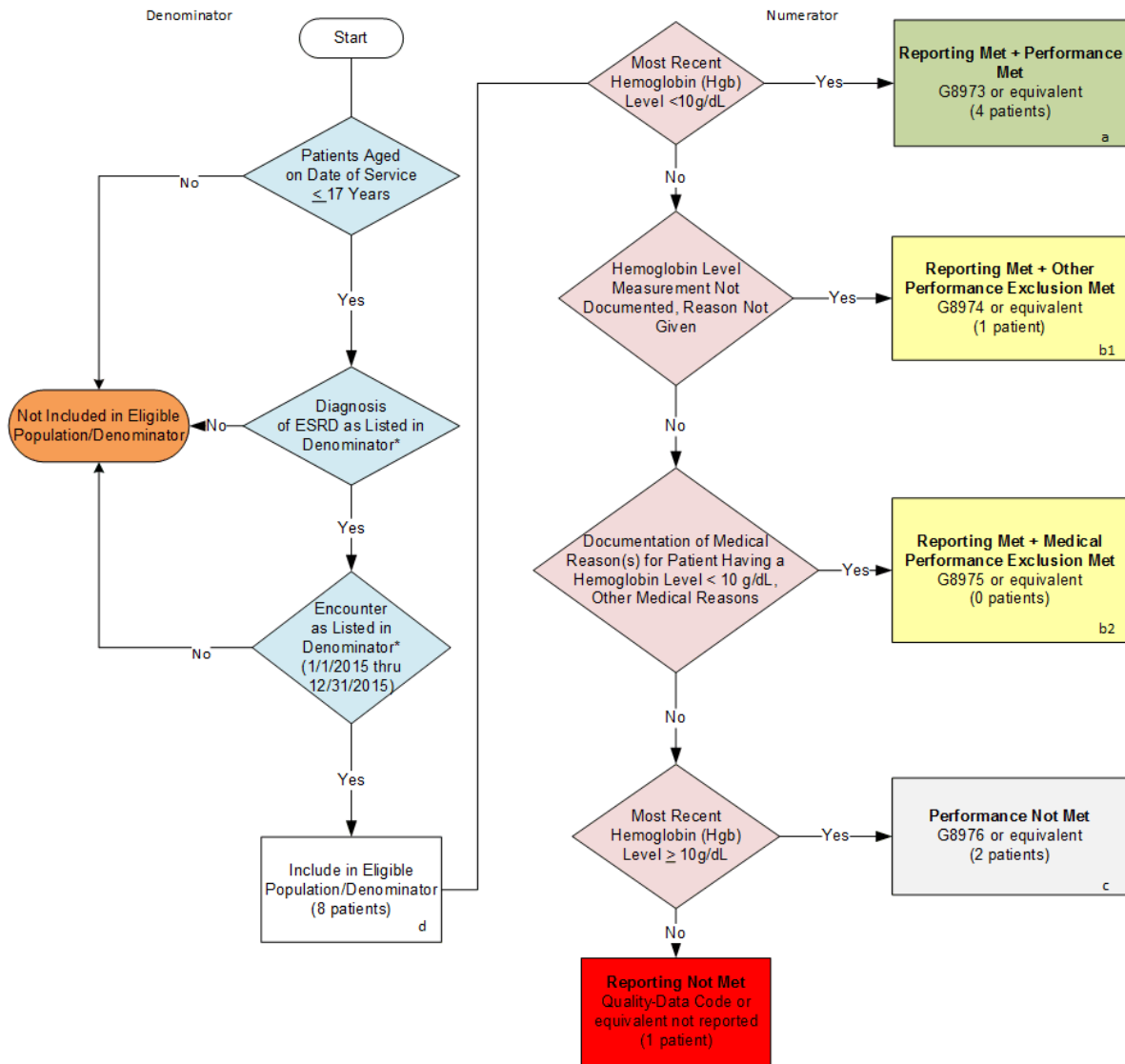


2015 Registry Individual Measure Flow
PQRS #328 NQF #1667: Pediatric Kidney Disease: ESRD Patients Receiving Dialysis:
Hemoglobin Level < 10 g/dL



SAMPLE CALCULATIONS:

Reporting Rate=

Performance Met (a=4 patients) + Performance Exclusion (b¹+b²=1 patient) + Performance Not Met (c=2 patients) = 7 patients = 87.50%
 Eligible Population / Denominator (d=8 patients) = 8 patients

Performance Rate=

Performance Met (a=4 patients) = 4 patients = 66.67%
 Reporting Numerator (7 patients) – Performance Exclusion (b=1 patient) = 6 patients

*See the posted Measure Specification for specific coding and instructions to report this measure.

A low performance rate for this measure indicates better clinical control and care

NOTE: Reporting Frequency: Patient-periodic

2015 Registry Individual Measure Flow
PQRS #328 NQF #1667: Pediatric Kidney Disease: ESRD Patients Receiving
Dialysis: Hemoglobin Level less than 10 g/dL

Please refer to the specific section of the Measure Specification to identify the denominator and numerator information for use in reporting this Individual Measure.

NOTE: A lower calculated performance rate for this measure indicates better clinical control and care.

1. Start with Denominator
2. Check Patient Age:
 - a. If Age less than or equal to 17 years of age on Date of Service equals No during the measurement period, do not include in Eligible Patient Population. Stop Processing.
 - b. If the Age less than or equal to 17 years of age on Date of Service equals Yes during the measurement period, proceed to check Patient Diagnosis.
3. Check Patient Diagnosis:
 - a. If Diagnosis of ESRD as Listed in the Denominator equals No, do not include in Eligible Patient Population. Stop Processing.
 - b. If Diagnosis of ESRD as Listed in the Denominator equals Yes, proceed to check Encounter Performed.
4. Check Encounter Performed:
 - a. If Encounter as Listed in the Denominator equals No, do not include in Eligible Patient Population. Stop Processing.
 - b. If Encounter as Listed in the Denominator equals Yes, include in the Eligible population.
5. Denominator Population:
 - a. Denominator population is all Eligible Patients in the denominator. Denominator is represented as Denominator in the Sample Calculation listed at the end of this document. Letter d equals 8 patients in the sample calculation.
6. Start Numerator
7. Check Most Recent Hemoglobin (HgB) Level less than 10 g/dL:
 - a. If Most Recent Hemoglobin (HgB) Level less than 10 g/dL equals Yes, include in Reporting Met and Performance Met.
 - b. Reporting Met and Performance Met letter is represented in the Reporting Rate and Performance Rate in the Sample Calculation listed at the end of this document. Letter a equals 4 patients in Sample Calculation.
 - c. If Most Recent Hemoglobin (HgB) Level less than 10 g/dL equals No, proceed to Hemoglobin Level Measurement Not Documented, Reason Not Given.
8. Check Hemoglobin Level Measurement Not Documented, Reason Not Given:
 - a. If Hemoglobin Level Measurement Not Documented, Reason Not Given equals Yes, include in Reporting Met and Performance Exclusion.

- b. Reporting Met and Performance Exclusion letter is represented in the Reporting Rate and Performance Rate in the Sample Calculation listed at the end of this document. Letter b¹ equals 1 patient in the Sample Calculation.
 - c. If Hemoglobin Level Measurement Not Documented, Reason Not Given equals No, proceed to Documentation of Medical Reason(s) for Patient Having a Hemoglobin Level less than 10 g/dL Other Medical Reason.
9. Check Documentation of Medical Reason(s) for Patient Having a Hemoglobin Level less than 10 g/dL Other Medical Reason:
 - a. If Documentation of Medical Reason(s) for Patient Having a Hemoglobin Level less than 10 g/dL equals Yes, include in Reporting Met and Performance Exclusion.
 - b. Reporting Met and Performance Exclusion letter is represented in the Reporting Rate in the Sample Calculation listed at the end of this document. Letter b² equals 0 patients in the Sample Calculation.
 - c. If Documentation of Medical Reason(s) for Patient Having a Hemoglobin Level less than 10 g/dL Other Medical Reason equals No, proceed to Most Recent Hemoglobin (Hgb) Level greater than or equal to 10 g/dL.
10. Check Most Recent Hemoglobin (Hgb) Level greater than or equal to 10 g/dL:
 - a. If Most Recent Hemoglobin (Hgb) Level greater than or equal to 10 g/dL equals Yes, include in the Reporting Met and Performance Not Met.
 - b. Reporting Met and Performance Not Met letter is represented in the Reporting Rate in the Sample Calculation listed at the end of this document. Letter c equals 2 patients in the Sample Calculation.
 - c. If Most Recent Hemoglobin (Hgb) Level greater than or equal to 10 g/dL equals No, proceed to Reporting Not Met.
11. Check Reporting Not Met:
 - a. If Reporting Not Met equals No, Quality Data Code or equivalent was not reported. 1 patient has been subtracted from reporting numerator in the sample calculation.

SAMPLE CALCULATIONS:

Reporting Rate=

$$\frac{\text{Performance Met (a=4 patients)} + \text{Performance Exclusion (b}^1 + \text{b}^2 = 1 \text{ patient)} + \text{Performance Not Met (c=2 patients)}}{\text{Eligible Population / Denominator (d=8 patients)}} = \frac{7 \text{ patients}}{8 \text{ patients}} = 87.50\%$$

Performance Rate=

$$\frac{\text{Performance Met (a=4 patients)}}{\text{Reporting Numerator (7 patients) - Performance Exclusion (b=1 patient)}} = \frac{4 \text{ patients}}{6 \text{ patients}} = 66.67\%$$