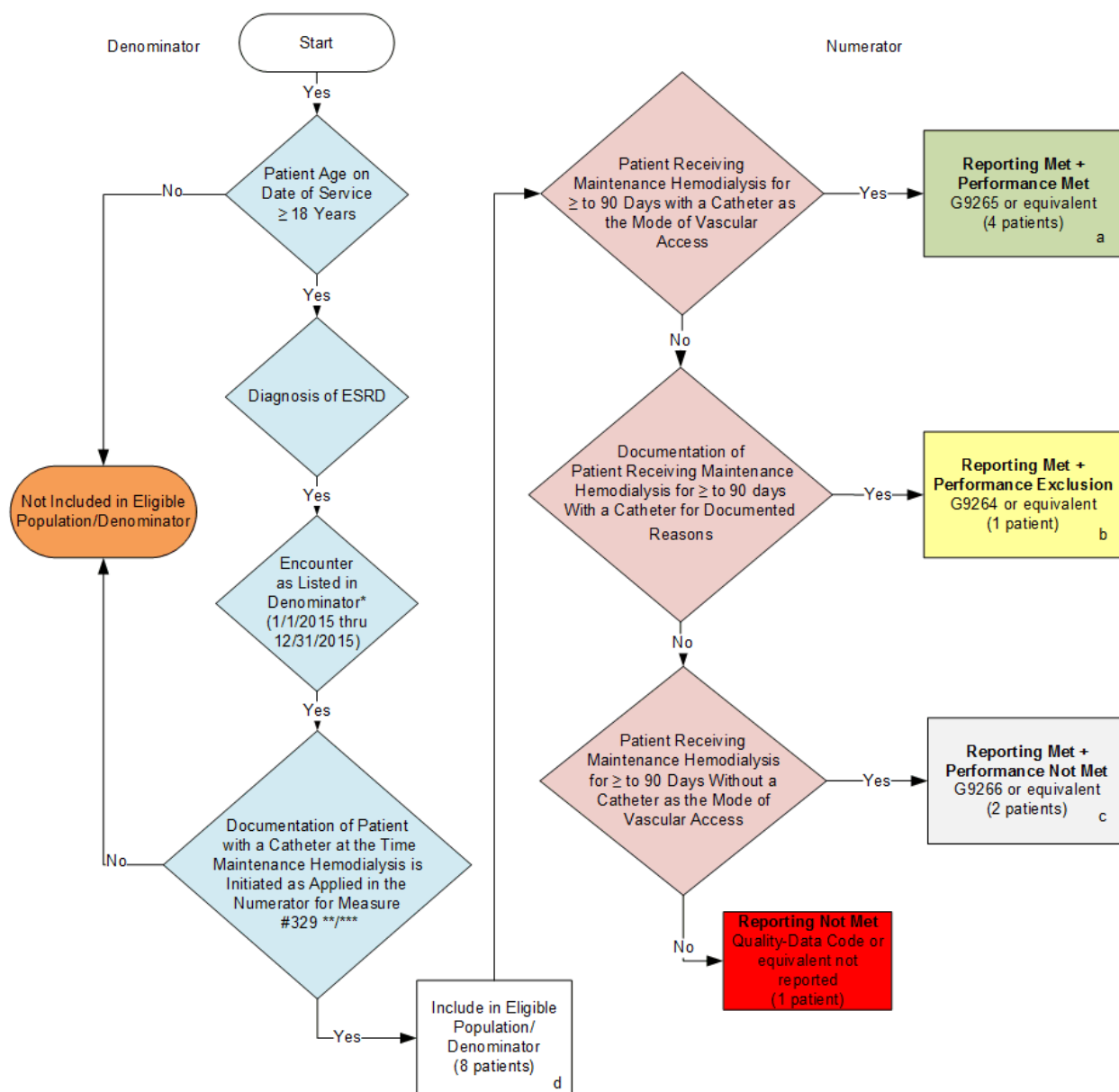


2015 Registry Individual Measure Flow

PQRS #330: Adult Kidney Disease: Catheter Use for Greater Than or Equal to 90 Days



SAMPLE CALCULATIONS:

Reporting Rate=

$$\frac{\text{Performance Met (a=4 patients)} + \text{Performance Exclusion (b=1 patient)} + \text{Performance Not Met (c=2 patients)}}{\text{Eligible Population / Denominator (d=8 patients)}} = \frac{7 \text{ patients}}{8 \text{ patients}} = 87.50\%$$

Performance Rate=

$$\frac{\text{Performance Met (a=4 patients)}}{\text{Reporting Numerator (7 patients) - Performance Exclusion (b=1 patient)}} = \frac{4 \text{ patients}}{6 \text{ patients}} = 66.66\%$$

* See the posted Measure Specification for specific coding and instructions to report this measure.

** Reporting measure #329 is a precursor for reporting this measure. Patients where G9240 or equivalent (documentation of patient with a catheter at the time maintenance hemodialysis is initiated) is reported in measure #329 are pulled into the denominator for measure #330.

***Patients with documentation of a catheter at the time maintenance hemodialysis is initiated (G9240 or equivalent) have been moved to the denominator of this measure to identify the measure's intended eligible population more accurately. This flow should be followed very carefully since the eligible population in this flow differs from the one posted in the Measure Specification.

A lower calculated performance rate for this measure indicates better clinical care or control.

NOTE: Report Frequency- Patient-process

v1

2015 Registry Individual Measure Flow
PQRS #330: Adult Kidney Disease: Catheter Use for Greater Than or Equal to 90 Days

Please refer to the specific section of the Measure Specification to identify the denominator and numerator information for use in reporting this Individual Measure. Reporting measure #329 is a precursor for reporting this measure. Patients where G9240 or equivalent (documentation of patient with a catheter at the time maintenance hemodialysis is initiated) is reported in measure #329 are pulled into the denominator for measure #330. A lower calculated performance rate for this measure indicates better clinical care or control.

1. Start with Denominator
2. Check Patient Age:
 - a. If Age greater than or equal to 18 years of age on Date of Service equals No during the measurement period, do not include in Eligible Patient Population. Stop Processing.
 - b. If the Age greater than or equal to 18 years of age on Date of Service equals Yes during the measurement period, proceed to check Patient Diagnosis.
3. Check Patient Diagnosis:
 - a. If Diagnosis of ESRD as Listed in the Denominator equals No, do not include in Eligible Patient Population. Stop Processing.
 - b. If Diagnosis of ESRD as Listed in the Denominator equals Yes, proceed to check Encounter Performed.
4. Check Encounter Performed:
 - a. If Encounter as listed in the denominator equals No, do not include in Eligible Patient Population. Stop Processing.
 - b. If Encounter as listed in the denominator equals Yes, proceed to check Documentation of Patient with a Catheter at the Time Maintenance Hemodialysis is Initiated as Applied in the Numerator for Measure number 329.
5. Check Documentation of Patient with a Catheter at the Time Maintenance Hemodialysis is Initiated as Applied in the Numerator for Measure number 329:
 - a. If Documentation of Patient with a Catheter at the Time Maintenance Hemodialysis is Initiated as Applied in the Numerator for Measure number 329 equals No, do not include in Eligible Patient Population. Stop Processing.
 - b. If Documentation of Patient with a Catheter at the Time Maintenance Hemodialysis is Initiated as Applied in the Numerator for Measure number 329 equals Yes, include in the Eligible population.
6. Denominator Population
 - a. Denominator population is all Eligible Patients in the denominator. Denominator is represented as Denominator in the Sample Calculation listed at the end of this document. Letter d equals 8 patients in the sample calculation.
7. Start Numerator
8. Check Patients Receiving Maintenance Hemodialysis for Greater Than or Equal to 90 Days With a Catheter as the Mode of Vascular Access

- a. If Patients Receiving Maintenance Hemodialysis for Greater Than or Equal to 90 Days With a Catheter as the Mode of Vascular Access equals Yes, include in Reporting Met and Performance Met.
 - b. Reporting Met and Performance Met letter is represented in the Reporting Rate and Performance Rate in the Sample Calculation listed at the end of this document. Letter a equals 4 patients in Sample Calculation.
 - c. If Patients Receiving Maintenance Hemodialysis for Greater Than or Equal to 90 Days With a Catheter as the Mode of Vascular Access equals No, proceed to Documentation Patients Receiving Maintenance Hemodialysis for Greater Than or Equal to 90 Days With a Catheter for Documented Reasons.
9. Check Documentation Patients Receiving Maintenance Hemodialysis for Greater Than or Equal to 90 Days With a Catheter for Documented Reasons:
 - a. If Documentation Patients Receiving Maintenance Hemodialysis for Greater Than or Equal to 90 Days With a Catheter for Documented Reasons equals Yes, include in Reporting Met and Performance Exclusion.
 - b. Reporting Met and Performance Exclusion letter is represented in the Reporting Rate and Performance Rate the Sample Calculation listed at the end of this document. Letter b equals 1 patient in the Sample Calculation.
 - c. If Documentation Patients Receiving Maintenance Hemodialysis for Greater Than or Equal to 90 Days With a Catheter for Documented Reasons equals No, proceed to Patient Receiving Maintenance Hemodialysis for Greater Than or Equal to 90 Days Without a Catheter as the Mode of Vascular Access.
10. Check Patient Receiving Maintenance Hemodialysis for Greater Than or Equal to 90 Days Without a Catheter as the Mode of Vascular Access:
 - a. If Patient Receiving Maintenance Hemodialysis for Greater Than or Equal to 90 Days Without a Catheter as the Mode of Vascular Access equals Yes, include in the Reporting Met and Performance Not Met.
 - b. Reporting Met and Performance Not Met letter is represented in the Reporting Rate in the Sample Calculation listed at the end of this document. Letter c equals 2 patients in the Sample Calculation.
 - c. If Patient Receiving Maintenance Hemodialysis for Greater Than or Equal to 90 Days Without a Catheter as the Mode of Vascular Access equals No, proceed to Reporting Not Met.
11. Check Reporting Not Met
 - a. If Reporting Not Met equals No, Quality Data Code or equivalent not reported. 1 patient has been subtracted from reporting numerator in the sample calculation.

SAMPLE CALCULATIONS:

Reporting Rate=

$$\frac{\text{Performance Met (a=4 patients)} + \text{Performance Exclusion (b=1 patient)} + \text{Performance Not Met (c=2 patients)}}{\text{Eligible Population / Denominator (d=8 patients)}} = \frac{7 \text{ patients}}{8 \text{ patients}} = 87.50\%$$

Performance Rate=

$$\frac{\text{Performance Met (a=4 patients)}}{\text{Reporting Numerator (7 patients) - Performance Exclusion (b=1 patient)}} = \frac{4 \text{ patients}}{6 \text{ patients}} = 66.66\%$$