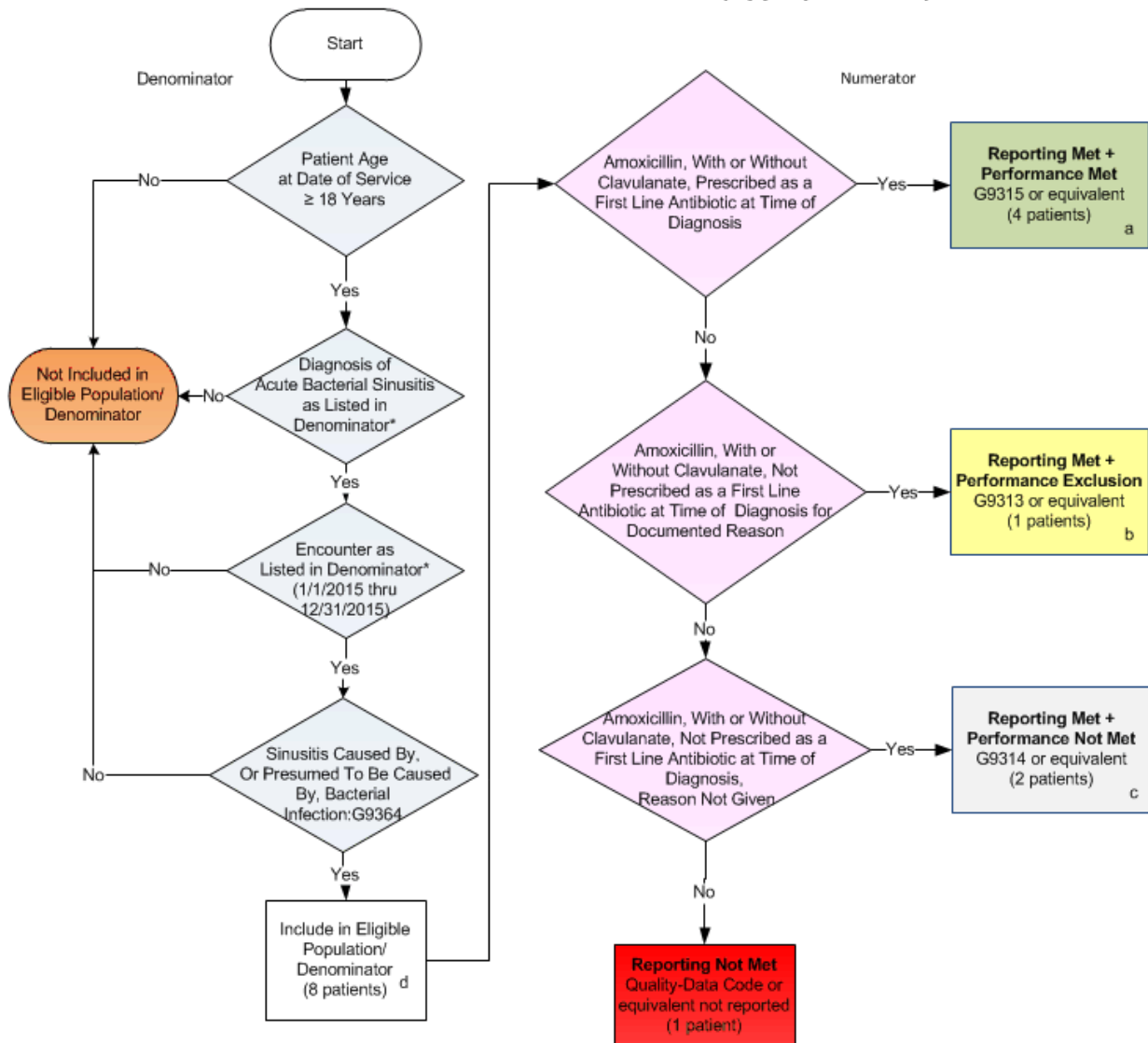


**2015 Registry Individual Measure Flow**  
**PQRS #332: Adult Sinusitis: Appropriate Choice of Antibiotic: Amoxicillin Prescribed for Patients with Acute Bacterial Sinusitis (Appropriate Use)**



**SAMPLE CALCULATIONS:**

**Reporting Rate=**

Performance Met (a=4 patients) + Performance Exclusion (b=1 patients) + Performance Not Met (c=2 patients) = 7 patients = 87.50%  
 Eligible Population / Denominator (d=8 patients) = 8 patients

**Performance Rate=**

Performance Met (a=4 patients) = 4 patients = 66.67%  
 Reporting Numerator (7 patients) - Performance Exclusion (b=1 patients) = 6 patients

\*See the posted Measure Specification for specific coding and instructions to report this measure.

NOTE: Reporting Frequency: Patient-process

**2015 Registry Individual Measure Flow**  
**PQRS #332: Adult Sinusitis: Appropriate Choice of Antibiotic: Amoxicillin**  
**Prescribed for Patients with Acute Bacterial Sinusitis (Appropriate Use)**

Please refer to the specific section of the Measure Specification to identify the denominator and numerator information for use in reporting this Individual Measure.

1. Start with Denominator
2. Check Patient Age:
  - a. If Age is greater than or equal to 18 years of age on Date of Service equals No during the measurement period, do not include in Eligible Patient Population. Stop Processing.
  - b. If Age is greater than or equal to 18 years of age on Date of Service equals Yes during the measurement period, proceed to check Patient Diagnosis.
3. Check Patient Diagnosis:
  - a. If Diagnosis of Acute Bacterial Sinusitis as Listed in the Denominator equals No, do not include in Eligible Patient Population. Stop Processing.
  - b. If Diagnosis of Acute Bacterial Sinusitis as Listed in the Denominator equals Yes, proceed to check Encounter Performed.
4. Check Encounter Performed:
  - a. If Encounter as Listed in the Denominator equals No, do not include in Eligible Patient Population. Stop Processing.
  - b. If Encounter as Listed in the Denominator equals Yes, proceed to check Sinusitis Caused By, Or Presumed To Be Caused By, Bacterial Infection: G9364.
5. Check Sinusitis Caused By, Or Presumed To Be Caused By, Bacterial Infection: G9364
  - a. If Sinusitis Caused By, Or Presumed To Be Caused By, Bacterial Infection: G9364 equals No, do not include in Eligible Patient Population. Stop Processing.
  - b. If Sinusitis Caused By, Or Presumed To Be Caused By, Bacterial Infection: G9364 equals Yes, include in the Eligible population.
6. Denominator Population:
  - a. Denominator population is all Eligible Patients in the denominator. Denominator is represented as Denominator in the Sample Calculation listed at the end of this document. Letter d equals 8 patients in the sample calculation.
7. Start Numerator
8. Check Amoxicillin, With or Without Clavulanate, Prescribed as a First Line Antibiotic at Time of Diagnosis:
  - a. If Amoxicillin, With or Without Clavulanate, Prescribed as a First Line Antibiotic at Time of Diagnosis equals Yes, include in Reporting Met and Performance Met.
  - b. Reporting Met and Performance Met letter is represented in the Reporting Rate and Performance Rate in the Sample Calculation listed at the end of this document. Letter a equals 4 patients in Sample Calculation.
  - c. If Amoxicillin, With or Without Clavulanate, Prescribed as a First Line Antibiotic at Time of Diagnosis equals No, proceed to Amoxicillin, With or Without Clavulanate, Not Prescribed as a First Line Antibiotic at Time of Diagnosis for Documented Reason.

9. Check Amoxicillin, With or Without Clavulanate, Not Prescribed as a First Line Antibiotic at Time of Diagnosis for Documented Reason:
  - a. If Amoxicillin, With or Without Clavulanate, Not Prescribed as a First Line Antibiotic at Time of Diagnosis for Documented Reason equals Yes, include in Reporting Met and Performance Exclusion.
  - b. Reporting Met and Performance Exclusion letter is represented in the Reporting Rate and Performance Rate in the Sample Calculation listed at the end of this document. Letter b equals 1 patient in the Sample Calculation.
  - c. If Amoxicillin, With or Without Clavulanate, Not Prescribed as a First Line Antibiotic at Time of Diagnosis for Documented Reason equals No, proceed to Amoxicillin, With or Without Clavulanate, Not Prescribed as a First Line Antibiotic at Time of Diagnosis, Reason Not Given.
10. Check Amoxicillin, With or Without Clavulanate, Not Prescribed as a First Line Antibiotic at Time of Diagnosis, Reason Not Given:
  - a. If Amoxicillin, With or Without Clavulanate, Not Prescribed as a First Line Antibiotic at Time of Diagnosis, Reason Not Given equals Yes, include in the Reporting Met and Performance Not Met.
  - b. Reporting Met and Performance Not Met letter is represented in the Reporting Rate in the Sample Calculation listed at the end of this document. Letter c equals 2 patients in the Sample Calculation.
  - c. If Amoxicillin, With or Without Clavulanate, Not Prescribed as a First Line Antibiotic at Time of Diagnosis, Reason Not Given equals No, proceed to Reporting Not Met.
11. Check Reporting Not Met
  - a. If Reporting Not Met equals No, Quality Data Code or equivalent not reported. 1 patient has been subtracted from the reporting numerator in the sample calculation.

#### **SAMPLE CALCULATIONS:**

##### **Reporting Rate=**

$$\frac{\text{Performance Met (a=4 patients)} + \text{Performance Exclusion (b=1 patients)} + \text{Performance Not Met (c=2 patients)}}{\text{Eligible Population / Denominator (d=8 patients)}} = \frac{7 \text{ patients}}{8 \text{ patients}} = 87.50\%$$

##### **Performance Rate=**

$$\frac{\text{Performance Met (a=4 patients)}}{\text{Reporting Numerator (7 patients) - Performance Exclusion (b=1 patients)}} = \frac{4 \text{ patients}}{6 \text{ patients}} = 66.67\%$$