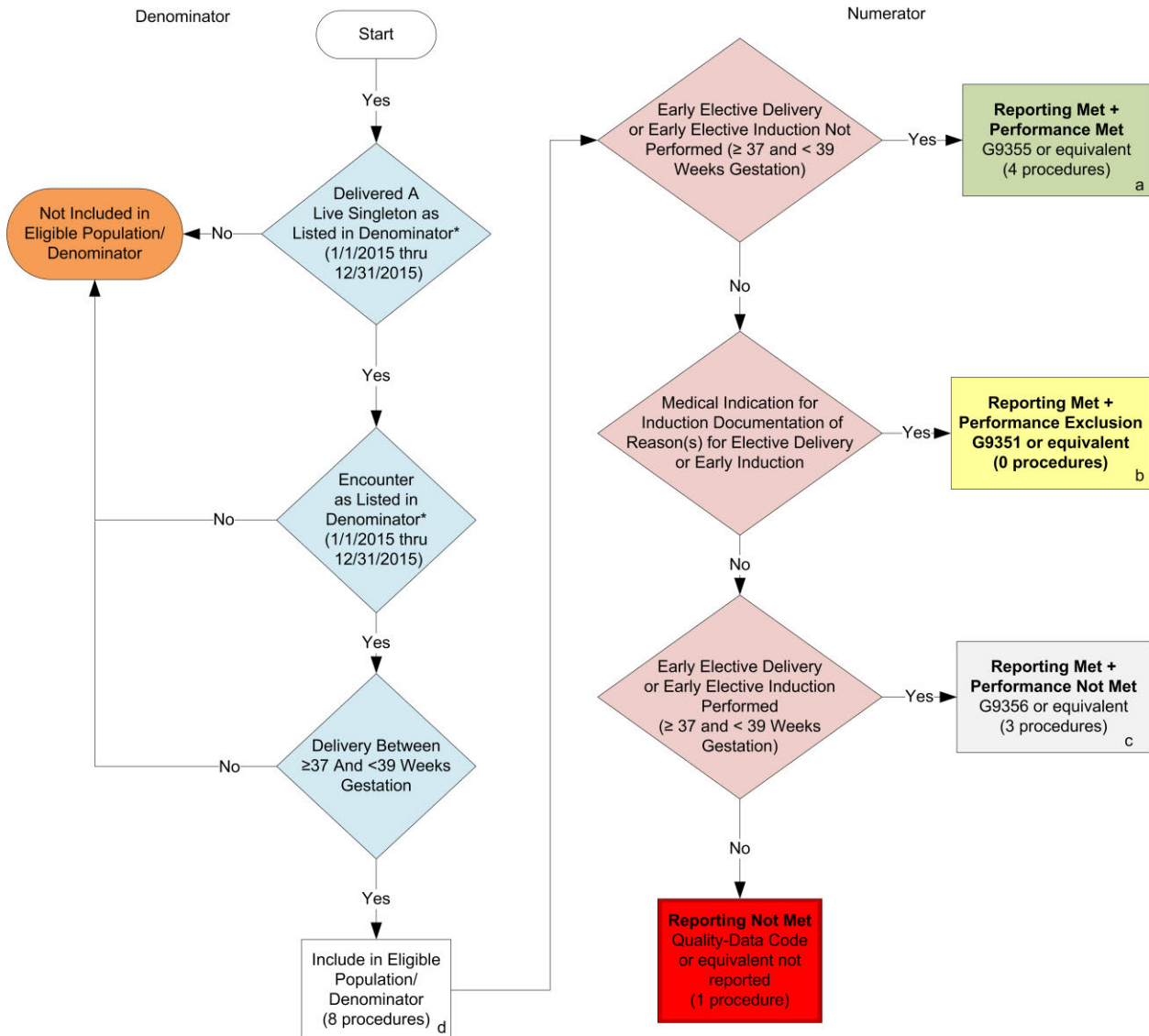


2015 Registry Individual Measure Flow
PQRS #335: Maternity Care: Elective Delivery or Early Induction Without Medical Indication at
≥ 37 and < 39 Weeks (Overuse)



SAMPLE CALCULATIONS:

Reporting Rate=

$$\frac{\text{Performance Met (a=4 procedures)} + \text{Performance Exclusion (b=0 procedures)} + \text{Performance Not Met (c=3 procedures)}}{\text{Eligible Population / Denominator (d=8 procedures)}} = \frac{7 \text{ procedures}}{8 \text{ procedures}} = 87.50\%$$

Performance Rate=

$$\frac{\text{Performance Met (a=4 procedures)}}{\text{Reporting Numerator (7 procedures) - Performance Exclusion (b=0 procedures)}} = \frac{4 \text{ procedures}}{7 \text{ procedures}} = 57.14\%$$

*See the posted Measure Specification for specific coding and instructions to report this measure.

NOTE: Reporting Frequency: Procedure

v1

2015 Claims/Registry Individual Measure Flow
PQRS #335: Maternity Care: Elective Delivery or Early Induction Without Medical
Indication at ≥ 37 and < 39 Weeks (Overuse)

Please refer to the specific section of the Measure Specification to identify the denominator and numerator information for use in reporting this Individual Measure.

1. Start with Denominator
2. Check Delivered A Live Singleton:
 - a. If Delivered Live Singleton as Listed in the Denominator equals No, do not include in Eligible Population.
 - b. If Delivered Live Singleton as Listed in the Denominator equals Yes, proceed to check Encounter Performed.
3. Check Encounter Performed:
 - a. If Encounter as Listed in the Denominator equals No, do not include in Eligible Patient Population. Stop Processing.
 - b. If Encounter as Listed in the Denominator equals Yes, proceed to check Delivery Between ≥ 37 Weeks and < 39 Weeks Gestation.
4. Check Delivery Between ≥ 37 Weeks and < 39 Weeks Gestation:
 - a. If Delivery Between ≥ 37 Weeks and < 39 Weeks Gestation equals No, do not include in Eligible Patient Population. Stop Processing.
 - b. If Delivery Between ≥ 37 Weeks and < 39 Weeks Gestation equals Yes, include in Eligible Population.
5. Denominator Population:
 - a. Denominator population is all Eligible Patients in the denominator. Denominator is represented as Denominator in the Sample Calculation listed at the end of this document. Letter d equals 8 procedures in the sample calculation.
6. Start Numerator
7. Check Early Elective Delivery or Early Elective Induction Not Performed (≥ 37 and < 39 Weeks Gestation):
 - a. If Early Elective Delivery or Early Elective Induction Not Performed (≥ 37 and < 39 Weeks Gestation) equals Yes, include in Reporting Met and Performance Met.
 - b. Reporting Met and Performance Met letter is represented in the Reporting Rate and Performance Rate in the Sample Calculation listed at the end of this document. Letter a equals 4 procedures in Sample Calculation.
 - c. If Early Elective Delivery or Early Elective Induction Not Performed (≥ 37 and < 39 Weeks Gestation) equals No, proceed to Medical Indication for Induction Documentation of Reason(s) for Elective Delivery or Early Induction.

8. Check Medical Indication for Induction Documentation of Reason(s) for Elective Delivery or Early Induction:
 - a. If Medical Indication for Induction Documentation of Reason(s) for Elective Delivery or Early Induction equals Yes, include in Reporting Met and Performance Exclusion.
 - b. Reporting Met and Performance Exclusion letter is represented in the Reporting Rate and Performance Rate in the Sample Calculation listed at the end of this document. Letter b equals 0 patients in Sample Calculation.
 - c. If Medical Indication for Induction Documentation of Reason(s) for Elective Delivery or Early Induction equals No, proceed to Early Elective Delivery or Early Elective Induction Performed (≥ 37 and <39 Weeks Gestation).
9. Check Early Elective Delivery or Early Elective Induction Performed (≥ 37 and <39 Weeks Gestation):
 - a. If Early Elective Delivery or Early Elective Induction Performed (≥ 37 and <39 Weeks Gestation) equals Yes, include in Reporting Met and Performance Not Met.
 - b. Reporting Met and Performance Not Met letter is represented in the Reporting Rate in the Sample Calculation listed at the end of this document. Letter c equals 3 procedures in the Sample Calculation.
 - c. If Early Elective Delivery or Early Elective Induction Performed (≥ 37 and <39 Weeks Gestation) equals No, proceed to Reporting Not Met.
10. Check Reporting Not Met
 - a. If Reporting Not Met equals No, Quality Data Code or equivalent was not reported. 1 procedure has been subtracted from the reporting numerator in the sample calculation.

SAMPLE CALCULATIONS:

Reporting Rate=

$$\frac{\text{Performance Met (a=4 procedures)} + \text{Performance Exclusion (b=0 procedures)} + \text{Performance Not Met (c=3 procedures)}}{\text{Eligible Population / Denominator (d=8 procedures)}} = \frac{7 \text{ procedures}}{8 \text{ procedures}} = 87.50\%$$

Performance Rate=

$$\frac{\text{Performance Met (a=4 procedures)}}{\text{Reporting Numerator (7 procedures) - Performance Exclusion (b=0 procedures)}} = \frac{4 \text{ procedures}}{7 \text{ procedures}} = 57.14\%$$