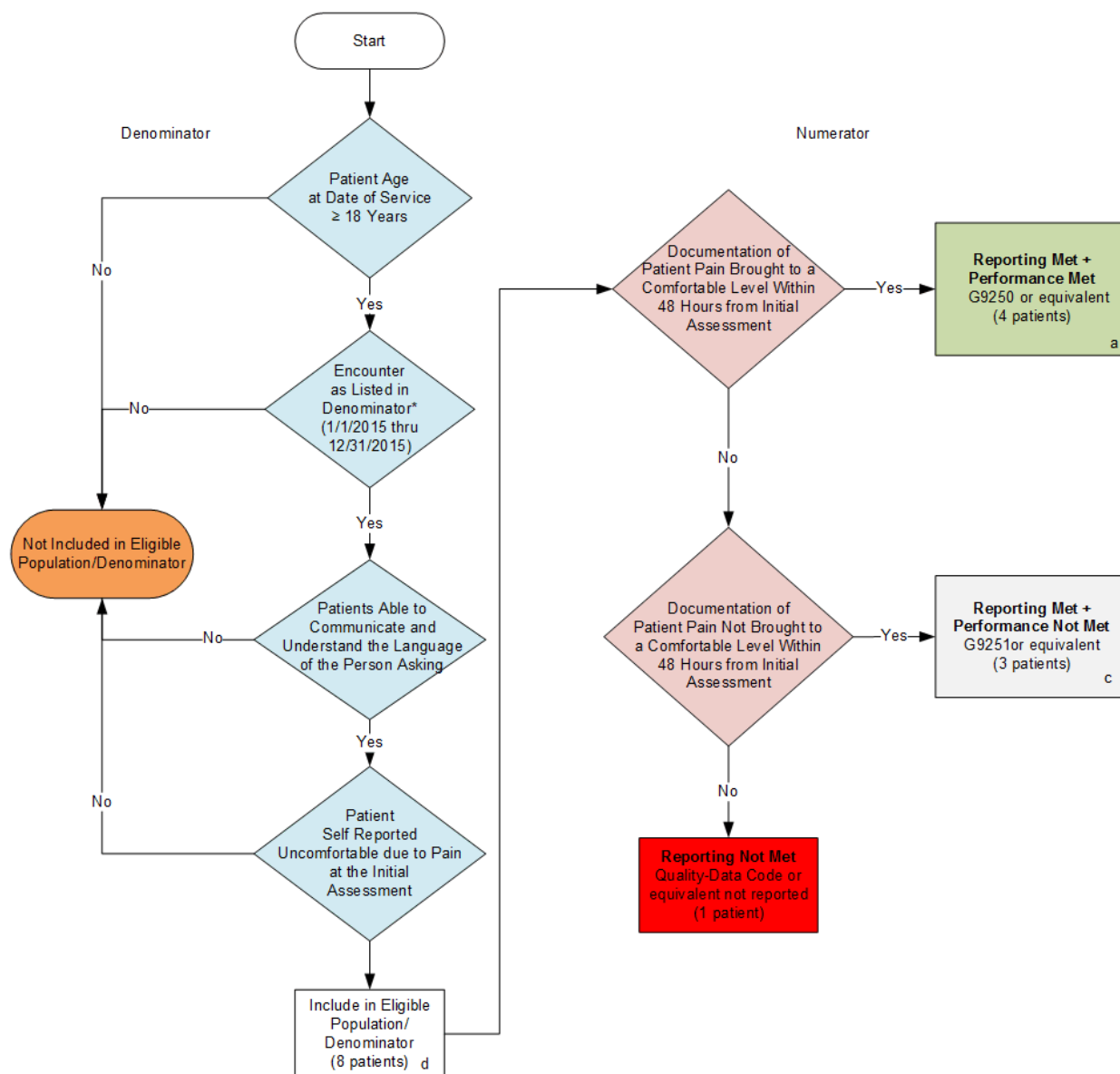


2015 Registry Individual Measure Flow
PQRS #342 NQF #0209: Pain Brought Under Control Within 48 Hours



SAMPLE CALCULATIONS:

Reporting Rate=

Performance Met (a=4 patients) + Performance Not Met (c=3 patients) = 7 patients = 87.50%
 Eligible Population / Denominator (d=8 patients) = 8 patients

Performance Rate=

Performance Met (a=4 patients) = 4 patients = 57.14%
 Reporting Numerator (7 patients) = 7 patients

*See the posted Measure Specification for specific coding and instructions to report this measure.

NOTE: Reporting Frequency: Patient-process

2015 Registry Individual Measure Flow
PQRS #342 NQF #0209: Pain Brought Under Control Within 48 Hours

Please refer to the specific section of the Measure Specification to identify the denominator and numerator information for use in reporting this Individual Measure.

1. Start with Denominator
2. Check Patient Age:
 - a. If Patient Age is greater than or equal to 18 Years of age at Date of Service and equals No, do not include in Eligible Population or Denominator. Stop Processing.
 - b. If Patient Age is greater than or equal to 18 Years of age at Date of Service and equals Yes, proceed to check Encounter Performed.
3. Check Encounter Performed:
 - a. If Encounter as Listed in the Denominator equals No, do not include in Eligible Population or Denominator. Stop Processing.
 - b. If Encounter as Listed in the Denominator equals Yes, proceed to check Patient able to Communicate and Understand the Language of the Person Asking.
4. Check Patient able to Communicate and Understand the Language of the Person Asking:
 - a. If Patient able to Communicate and Understand the Language of the Person Asking equals No, do not include in Eligible Population or Denominator. Stop Processing.
 - b. If Patient able to Communicate and Understand the Language of the Person Asking equals Yes, proceed to check Patient Self Reported Uncomfortable due to Pain at the Initial Assessment.
5. Check Patient Self Reported Uncomfortable due to Pain at the Initial Assessment:
 - a. If Patient Self Reported Uncomfortable due to Pain at the Initial Assessment equals No, do not include in Eligible Population or Denominator. Stop Processing.
 - b. If Patient Self Reported Uncomfortable due to Pain at the Initial Assessment equals Yes, include in Eligible Population or Denominator.
6. Denominator Population
 - a. Denominator population is all Eligible Patients in the denominator. Denominator is represented as Denominator in the Sample Calculation listed at the end of this document. Letter d equals 8 patients in the sample calculation.
7. Start Numerator
8. Check Documentation of Patient Pain Brought to a Comfortable Level Within 48 Hours from Initial Assessment:
 - a. If Documentation of Patient Pain Brought to a Comfortable Level Within 48 Hours from Initial Assessment equals Yes, include in Reporting Met and Performance Met.
 - b. Reporting Met and Performance Met letter is represented in the Reporting Rate and Performance Rate in the Sample Calculation listed at the end of this document. Letter a equals 4 patients in Sample Calculation.

- c. If Documentation of Patient Pain Brought to a Comfortable Level Within 48 Hours from Initial Assessment equals No, proceed to check Documentation of Patient Pain Not Brought to a Comfortable Level Within 48 Hours From Initial Assessment.
9. Check Documentation of Patient Pain Not Brought to a Comfortable Level Within 48 Hours From Initial Assessment:
 - a. If Documentation of Patient Pain Not Brought to a Comfortable Level Within 48 Hours From Initial Assessment equals Yes, include in Reporting Met and Performance Not Met.
 - b. Reporting Met and Performance Not Met letter is represented in the Reporting Rate in the Sample Calculation listed at the end of this document. Letter c equals 3 patients in the Sample Calculation.
 - c. If Documentation of Patient Pain not Brought to a Comfortable Level Within 48 Hours from Initial Assessment equals No, proceed to check Reporting Not Met.
10. Check Reporting Not Met:
 - a. If Reporting Not Met, the Quality Data Code or equivalent was not reported. 1 patient has been subtracted from the reporting numerator in sample calculation.

SAMPLE CALCULATIONS:

Reporting Rate=

$$\frac{\text{Performance Met (a=4 patients)} + \text{Performance Not Met (c=3 patients)}}{\text{Eligible Population / Denominator (d=8 patients)}} = \frac{7 \text{ patients}}{8 \text{ patients}} = 87.50\%$$

Performance Rate=

$$\frac{\text{Performance Met (a=4 patients)}}{\text{Reporting Numerator (7 patients)}} = \frac{4 \text{ patients}}{7 \text{ patients}} = 57.14\%$$