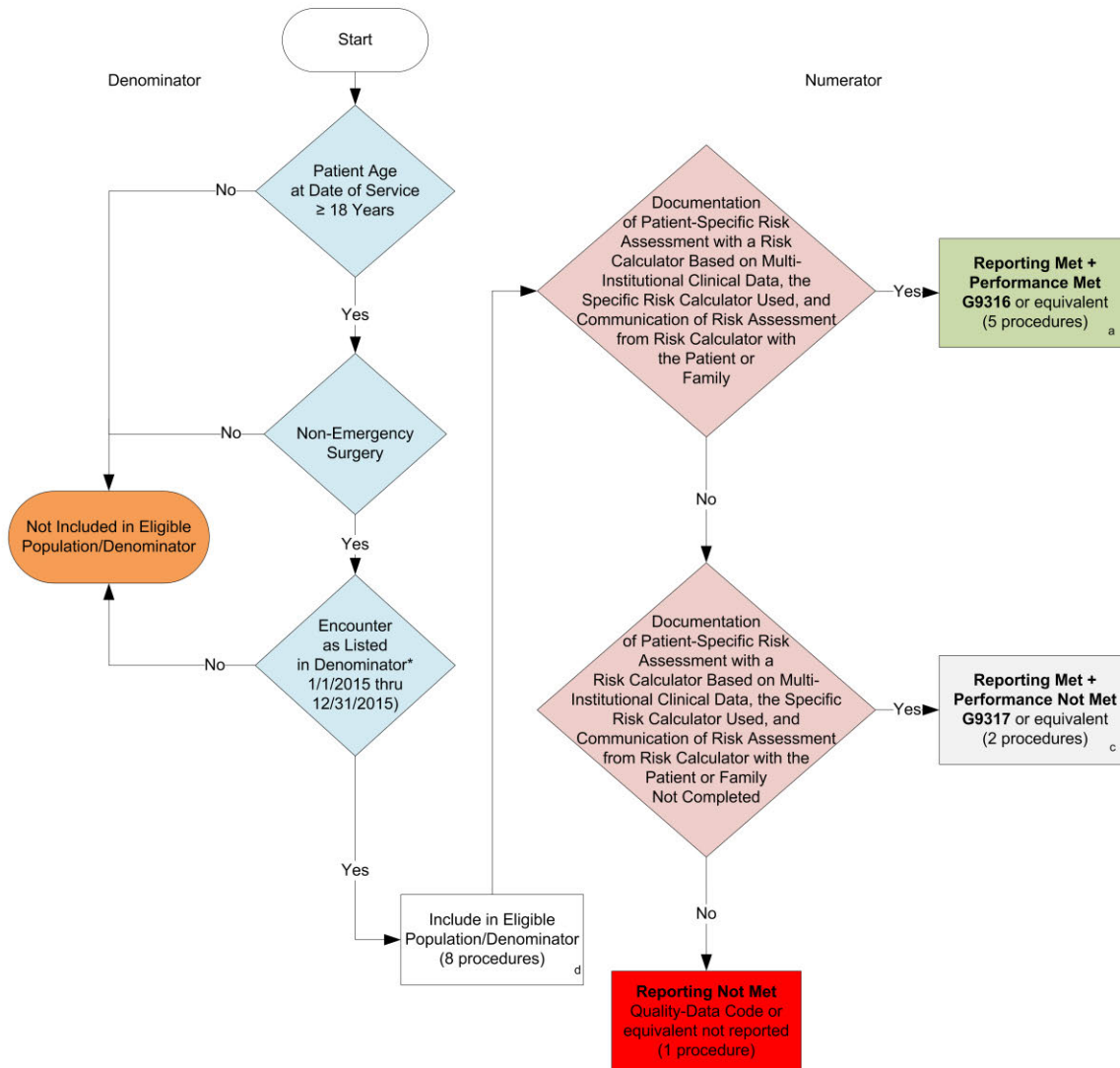


2015 Registry Individual Measure Flow
PQRS #358: Patient-Centered Surgical Risk Assessment and Communication



SAMPLE CALCULATIONS:	
Reporting Rate=	
Performance Met (a=5 procedures) + Performance Not Met (c=2 procedures) = 7 procedures	87.50%
Eligible Population / Denominator (d=8 procedures) = 8 procedures	
Performance Rate=	
Performance Met (a=5 procedures) = 5 procedures	71.43%
Reporting Numerator (7 procedures) = 7 procedures	

*See the posted Measure Specification for specific coding and instructions to report this measure.

NOTE: Reporting Frequency: Procedure

CPT only copyright 2014 American Medical Association. All rights reserved.

v1

2015 Registry Individual Measure Flow
PQRS #358: Patient-Centered Surgical Risk Assessment and Communication

Please refer to the specific section of the Measure Specification to identify the denominator and numerator information for use in reporting this Individual Measure.

1. Start with Denominator
2. Check Patient Age:
 - a. If Patient Age greater than or equal to 18 Years of Age at Date of Service and equals No, do not include in Eligible Population or Denominator. Stop Processing.
 - b. If Patient Age greater than or equal to 18 Years of Age at Date of Service and equals Yes, proceed to check Non-Emergency Surgery.
3. Check Non-Emergency Surgery:
 - a. If Non-Emergency Surgery equals No, do not include in Eligible Population or Denominator. Stop Processing.
 - b. If Non-Emergency Surgery equals Yes, proceed to check Encounter Performed.
4. Check Encounter Performed:
 - a. If Encounter as Listed in the Denominator equals No, do not include in Eligible Population or Denominator. Stop Processing.
 - b. If Encounter as Listed in the Denominator equals Yes, include in the Eligible population or Denominator.
5. Denominator Population:
 - a. Denominator population is all Eligible Patients in the denominator. Denominator is represented as Denominator in the Sample Calculation listed at the end of this document. Letter d equals 8 procedures in the sample calculation.
6. Start Numerator
7. Check Documentation of Patient-Specific Risk Assessment with a Risk Calculator Based on Multi-Institutional Clinical Data, the Specific Risk Calculator Used, and Communication of Risk Assessment from Risk Calculator with the Patient or Family:
 - a. If Documentation of Patient-Specific Risk Assessment with a Risk Calculator Based on Multi-Institutional Clinical Data, the Specific Risk Calculator Used, and Communication of Risk Assessment from Risk Calculator with the Patient or Family equals Yes, include in Reporting Met and Performance Met.
 - b. Reporting Met and Performance Met letter is represented in the Reporting Rate and Performance Rate in the Sample Calculation listed at the end of this document. Letter a equals 5 procedures in Sample Calculation.
 - c. If Documentation of Patient-Specific Risk Assessment with a Risk Calculator Based on Multi-Institutional Clinical Data, the Specific Risk Calculator Used, and Communication of Risk Assessment from Risk Calculator with the Patient or Family equals No, proceed to check Documentation of Patient-Specific Risk Assessment with a Risk Calculator Based on Multi-Institutional Clinical Data, the Specific Risk Calculator Used, and Communication of Risk Assessment from Risk Calculator with the Patient or Family Not Completed.

8. Check Documentation of Patient-Specific Risk Assessment with a Risk Calculator Based on Multi-Institutional Clinical Data, the Specific Risk Calculator Used, and Communication of Risk Assessment from Risk Calculator with the Patient or Family Not Completed:
- If Documentation of Patient-Specific Risk Assessment with a Risk Calculator Based on Multi-Institutional Clinical Data, the Specific Risk Calculator Used, and Communication of Risk Assessment from Risk Calculator with the Patient or Family Not Completed equals Yes, include in Reporting Met and Performance Not Met.
 - Reporting Met and Performance Not Met letter is represented in the Reporting Rate in the Sample Calculation listed at the end of this document. Letter c equals 2 procedures in the Sample Calculation.
 - If Documentation of Patient-Specific Risk Assessment with a Risk Calculator Based on Multi-Institutional Clinical Data, the Specific Risk Calculator Used, and Communication of Risk Assessment from Risk Calculator with the Patient or Family Not Completed equals No, proceed to Reporting Not Met.
9. Check Reporting Not Met:
- If Reporting Not Met, the Quality Data Code or equivalent was not reported. 1 procedure has been subtracted from the reporting numerator in sample calculation.

SAMPLE CALCULATIONS:

Reporting Rate=

$$\frac{\text{Performance Met (a=5 procedures)} + \text{Performance Not Met (c=2 procedures)}}{\text{Eligible Population / Denominator (d=8 procedures)}} = \frac{7 \text{ procedures}}{8 \text{ procedures}} = 87.50\%$$

Performance Rate=

$$\frac{\text{Performance Met (a=5 procedures)}}{\text{Reporting Numerator (7 procedures)}} = \frac{5 \text{ procedures}}{7 \text{ procedures}} = 71.43\%$$