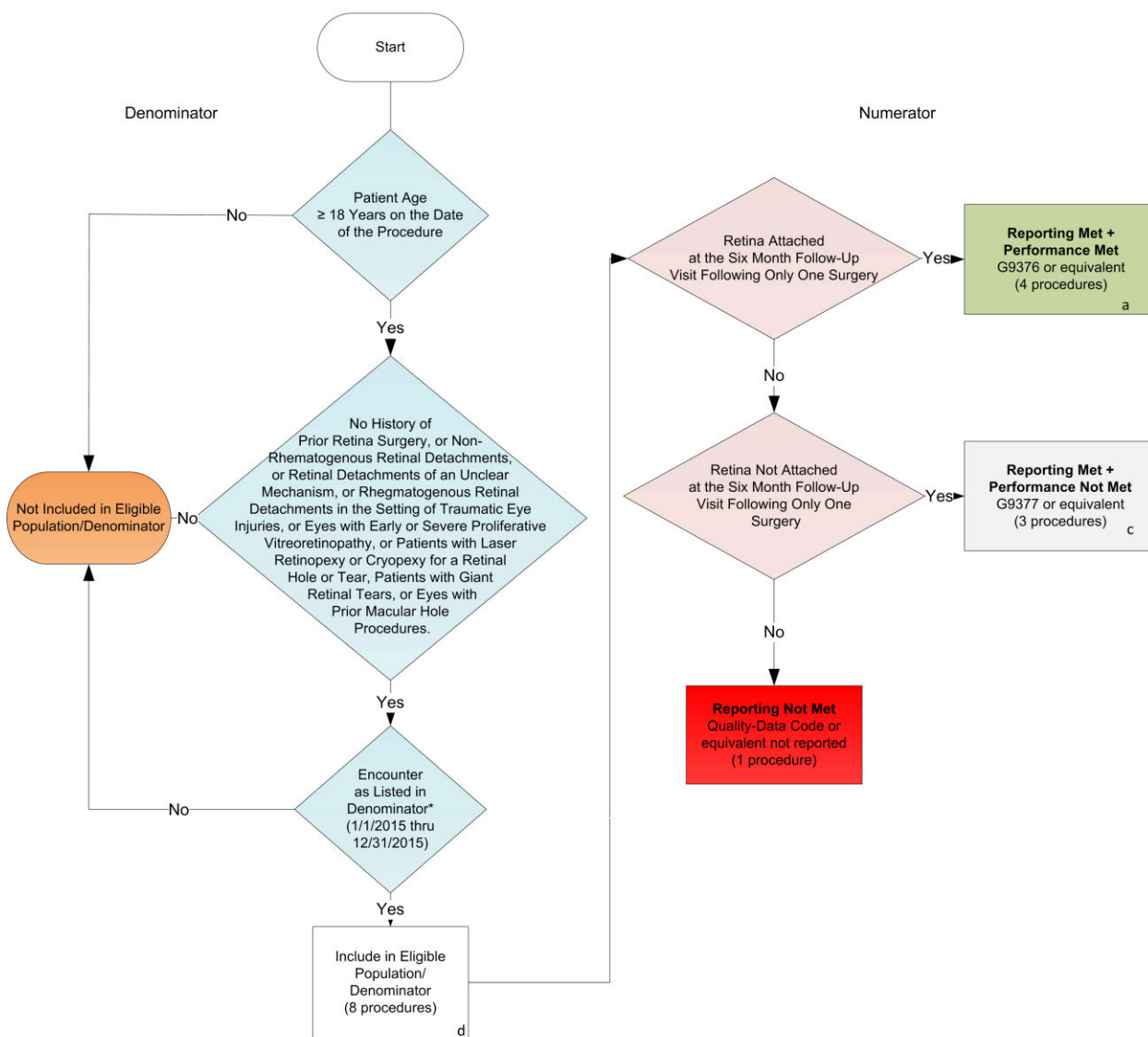


**2015 Registry Individual Measure Flow**  
**PQRS #384: Adult Primary Rhegmatogenous Retinal Detachment Repair Success Rate**



SAMPLE CALCULATIONS:			
<b>Reporting Rate=</b>			
Performance Met (a=4 procedures) + Performance Not Met (c=3 procedures) =		7 procedures	= 87.50%
Eligible Population / Denominator (d=8 procedures) =		8 procedures	
<b>Performance Rate=</b>			
Performance Met (a=4 procedures) =		4 procedures	= 57.14%
Reporting Numerator (7 procedures) =		7 procedures	

\*See the posted Measure Specification for specific coding and instructions to report this measure.

NOTE:Reporting Frequency - Procedure

CPT only copyright 2014 American Medical Association. All rights reserved.  
v1

**2015 Registry Individual Measure Flow**  
**PQRS #384: Adult Primary Rhegmatogenous Retinal Detachment Repair Success Rate**

Please refer to the specific section of the Measure Specification to identify the denominator and numerator information for use in reporting this Individual Measure.

1. Start with Denominator
2. Check Patient Age:
  - a. If Patient Age is greater than or equal to 18 Years on the Date of the Procedure equals No, do not include in Eligible Patient Population. Stop Processing.
  - b. If Patient Age is greater than or equal to 18 Years on the Date of the Procedure equals Yes, proceed to check Patient Diagnosis.
3. Check Patient Diagnosis:
  - a. If No History of Prior Retina Surgery, or Non-Rhematogenous Retinal Detachments, or Retinal Detachments of an Unclear Mechanism, or Rhegmatogenous Retinal Detachments in the Setting of Traumatic Eye Injuries, or Eyes with Early or Severe Proliferative Vitreoretinopathy, or Patients with Laser Retinopexy or Cryopexy for a Retinal Hole or Tear, Patients with Giant Retinal Tears, or Eyes with Prior Macular Hole Procedures equals No, do not include in Eligible Patient Population. Stop Processing.
  - b. If No History of Prior Retina Surgery, or Non-Rhematogenous Retinal Detachments, or Retinal Detachments of an Unclear Mechanism, or Rhegmatogenous Retinal Detachments in the Setting of Traumatic Eye Injuries, or Eyes with Early or Severe Proliferative Vitreoretinopathy, or Patients with Laser Retinopexy or Cryopexy for a Retinal Hole or Tear, Patients with Giant Retinal Tears, or Eyes with Prior Macular Hole Procedures equals Yes, proceed to check Encounter Performed.
4. Check Encounter Performed:
  - a. If Encounter as Listed in the Denominator equals No, do not include in Eligible Patient Population. Stop Processing.
  - b. If Encounter as Listed in the Denominator equals Yes, include in the Eligible population.
5. Denominator Population
  - a. Denominator population is all Eligible Patients in the denominator. Denominator is represented as Denominator in the Sample Calculation listed at the end of this document. Letter d equals 8 patients in the sample calculation.
6. Start Numerator
7. Check Retina Attached at the Six Month Follow-Up Visit Following Only One Surgery:
  - a. If Retina Attached at the Six Month Follow-Up Visit Following Only One Surgery equals Yes, include in reporting met and performance met.
  - b. Reporting Met and Performance Met letter is represented in the Reporting Rate and Performance Rate in the Sample Calculation listed at the end of this document. Letter a equals 4 patients in Sample Calculation.
  - c. If Retina Attached at the Six Month Follow-Up Visit Following Only One Surgery equals No, proceed to check Retina Not Attached at the Six Month Follow-Up Visit Following Only One Surgery.

8. Check Retina Not Attached at the Six Month Follow-Up Visit Following Only One Surgery:
  - a. If Retina Not Attached at the Six Month Follow-Up Visit Following Only One Surgery equals Yes, include in Reporting Met and Performance Not Met.
  - b. Reporting Met and Performance Not Met letter is represented in the Reporting Rate in the Sample Calculation listed at the end of this document. Letter c equals 3 procedures in the Sample Calculation.
  - c. If Retina Not Attached at the Six Month Follow-Up Visit Following Only One Surgery equals No, proceed to Reporting Not Met.
9. Check Reporting Not Met:
  - a. If Reporting Not Met, the Quality Data Code or equivalent was not reported. 1 procedure has been subtracted from the reporting numerator in sample calculation.

**SAMPLE CALCULATIONS:**

**Reporting Rate=**

$$\frac{\text{Performance Met (a=4 procedures) + Performance Not Met (c=3 procedures)}}{\text{Eligible Population / Denominator (d=8 procedures)}} = \frac{7 \text{ procedures}}{8 \text{ procedures}} = 87.50\%$$

**Performance Rate=**

$$\frac{\text{Performance Met (a=4 procedures)}}{\text{Reporting Numerator (7 procedures)}} = \frac{4 \text{ procedures}}{7 \text{ procedures}} = 57.14\%$$