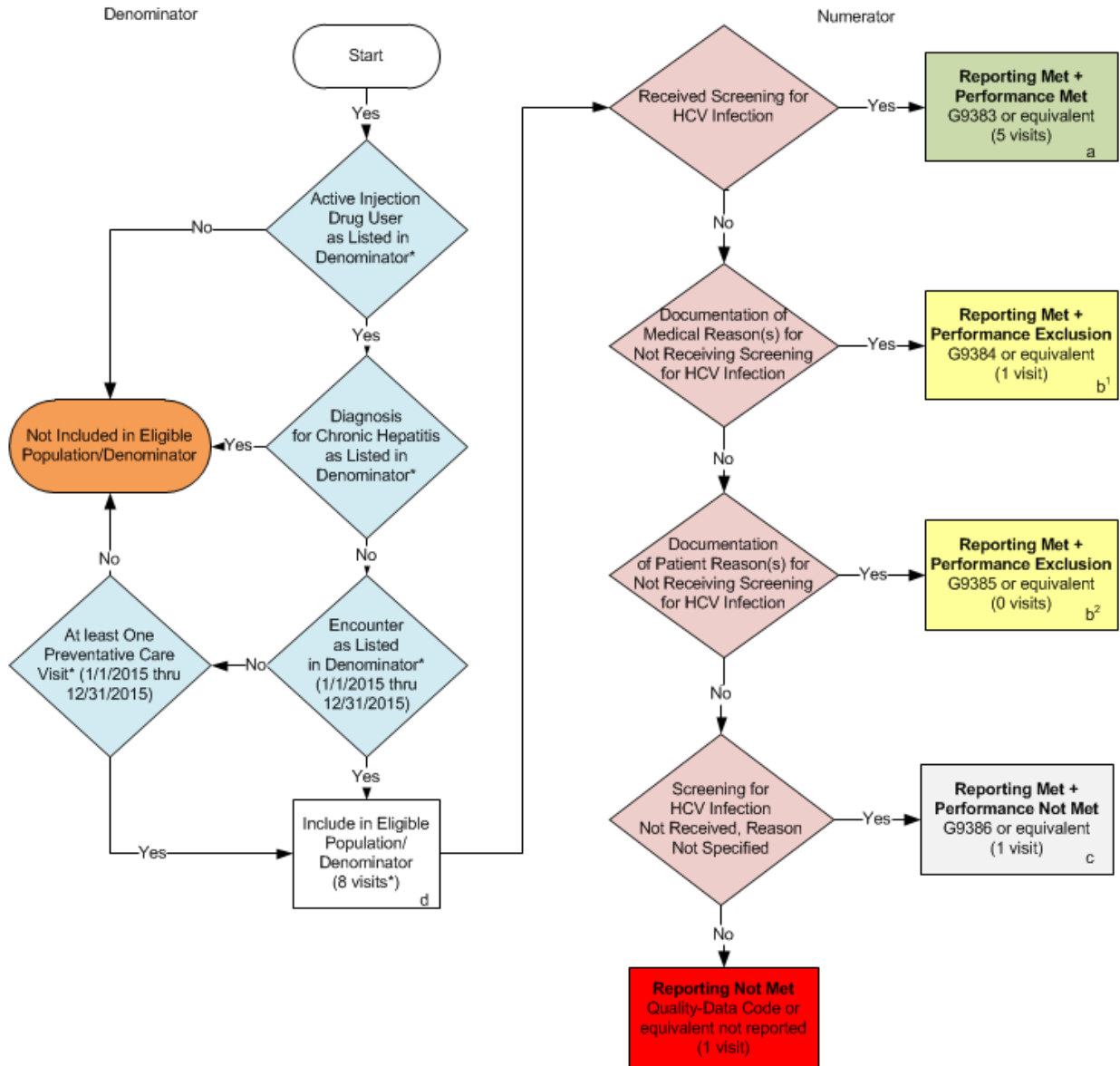


2015 Registry Individual Measure Flow
PQRS #387 Annual Hepatitis C Virus (HCV) Screening for Patients who are Active Injection Drug Users



SAMPLE CALCULATIONS:

Reporting Rate=
 Performance Met (a=5 visits) + Performance Exclusion (b¹+b²=1 visit) + Performance Not Met (c=1 visit) = 7 visits = 87.50 %
 Eligible Population / Denominator (d=8 visits) = 8 visits

Performance Rate=
 Performance Met (a=5 visits) = 5 visits = 83.33 %
 Reporting Numerator (7 visits) – Performance Exclusion (b¹+b²=1 visit) = 6 visits

*See the posted Measure Specification for specific coding and instructions to report this measure.

NOTE: Report Frequency - Visit

2015 Registry Individual Measure Flow
PQRS #387: Annual Hepatitis C Virus (HCV) Screening for Patients who are Active
Injection Drug Users

Please refer to the specific section of the Measure Specification to identify the denominator and numerator information for use in reporting this Individual Measure.

1. Start with Denominator
2. Check Patient Drug Use:
 - a. If Active Injection Drug User as Listed in Denominator equals No, do not include in Eligible Patient Population. Stop Processing.
 - b. If Active Injection Drug User as Listed in Denominator equals Yes, proceed to check Patient Diagnosis.
3. Check Patient Diagnosis:
 - a. If Diagnosis for Chronic Hepatitis as Listed in the Denominator equals Yes, do not include in Eligible Patient Population. Stop Processing.
 - b. If Diagnosis for Chronic Hepatitis as Listed in the Denominator equals No, proceed to check Encounter Performed.
4. Check Encounter Performed:
 - a. If Encounter as Listed in the Denominator equals No, proceed to Check Preventative Care Performed.
 - b. If Encounter as Listed in the Denominator equals Yes, include in the Eligible population.
5. Check Preventative Care Performed:
 - a. If Preventative Care Performed equals No, do not include in Eligible Patient Population. Stop Processing.
 - b. If Preventative Care Performed equals Yes, include in the Eligible population.
6. Denominator Population:
 - a. Denominator population is all Eligible Patients in the denominator. Denominator is represented as Denominator in the Sample Calculation listed at the end of this document. Letter d equals 8 visits in the sample calculation.
7. Start Numerator
8. Check Received Screening for HCV Infection:
 - a. If Received Screening for HCV Infection equals Yes, include in Reporting Met and Performance Met.
 - b. Reporting Met and Performance Met letter is represented in the Reporting Rate and Performance Rate in the Sample Calculation listed at the end of this document. Letter a equals 5 visits in Sample Calculation.
 - c. If Received Screening for HCV Infection equals No, proceed to check Documentation of Medical Reason(s) for Not Receiving Screening for HCV Infection.
9. Check Documentation of Medical Reasons for Not Receiving Screening for HCV Infection:
 - a. If Documentation of Medical Reason(s) for Not Receiving Screening for HCV Infection equals Yes, include in Reporting Met and Performance Exclusion.

- b. Reporting Met and Performance Exclusion letter is represented in the Reporting Rate and Performance Rate in the Sample Calculation listed at the end of this document. Letter b^1 equals 1 visit in the Sample Calculation.
 - c. If Documentation of Medical Reason(s) for Not Receiving Screening for HCV Infection equals No, proceed to check Documentation of Patient Reasons for Not Receiving Screening for HCV Infection.
- 10. Check Documentation of Patient Reason(s) for Not Receiving Screening for HCV Infection:
 - a. If Documentation of Patient Reason(s) for Not Receiving Screening for HCV Infection equals Yes, include in the Reporting Met and Performance Exclusion.
 - b. Reporting Met and Performance Exclusion letter is represented in the Reporting Rate and Performance Rate in the Sample Calculation listed at the end of this document. Letter b^2 equals 0 visits in the Sample Calculation.
 - c. If Documentation of Patient Reason(s) for Not Receiving Screening for HCV Infection equals No, proceed to check Screening for HCV Infection Not Received, Reason Not Specified.
- 11. Check Screening for HCV Infection Not Received, Reason Not Specified:
 - a. If Screening for HCV Infection Not Received, Reason Not Specified Yes, include in Reporting Met and Performance Not Met.
 - b. Reporting Met and Performance Not Met letter is represented in the Reporting Rate and Performance Rate in the Sample Calculation listed at the end of this document. Letter c equals 1 visit in Sample Calculation.
 - c. If Screening for HCV Infection Not Received, Reason Not Specified equals No, proceed to Reporting Not Met.
- 12. Check Reporting Not Met:
 - a. If Reporting Not Met equals No, Quality Data Code or equivalent was not reported. This is represented by 1 visit in the Sample Calculation.

SAMPLE CALCULATIONS:

Reporting Rate=

$$\frac{\text{Performance Met (a=5 visits)} + \text{Performance Exclusion (b}^1 + b^2 = 1 \text{ visit)} + \text{Performance Not Met (c=1 visit)}}{\text{Eligible Population / Denominator (d=8 visits)}} = \frac{7 \text{ visits}}{8 \text{ visits}} = 87.50 \%$$

Performance Rate=

$$\frac{\text{Performance Met (a=5 visits)}}{\text{Reporting Numerator (7 visits) - Performance Exclusion (b}^1 + b^2 = 1 \text{ visit)}} = \frac{5 \text{ visits}}{6 \text{ visits}} = 83.33 \%$$