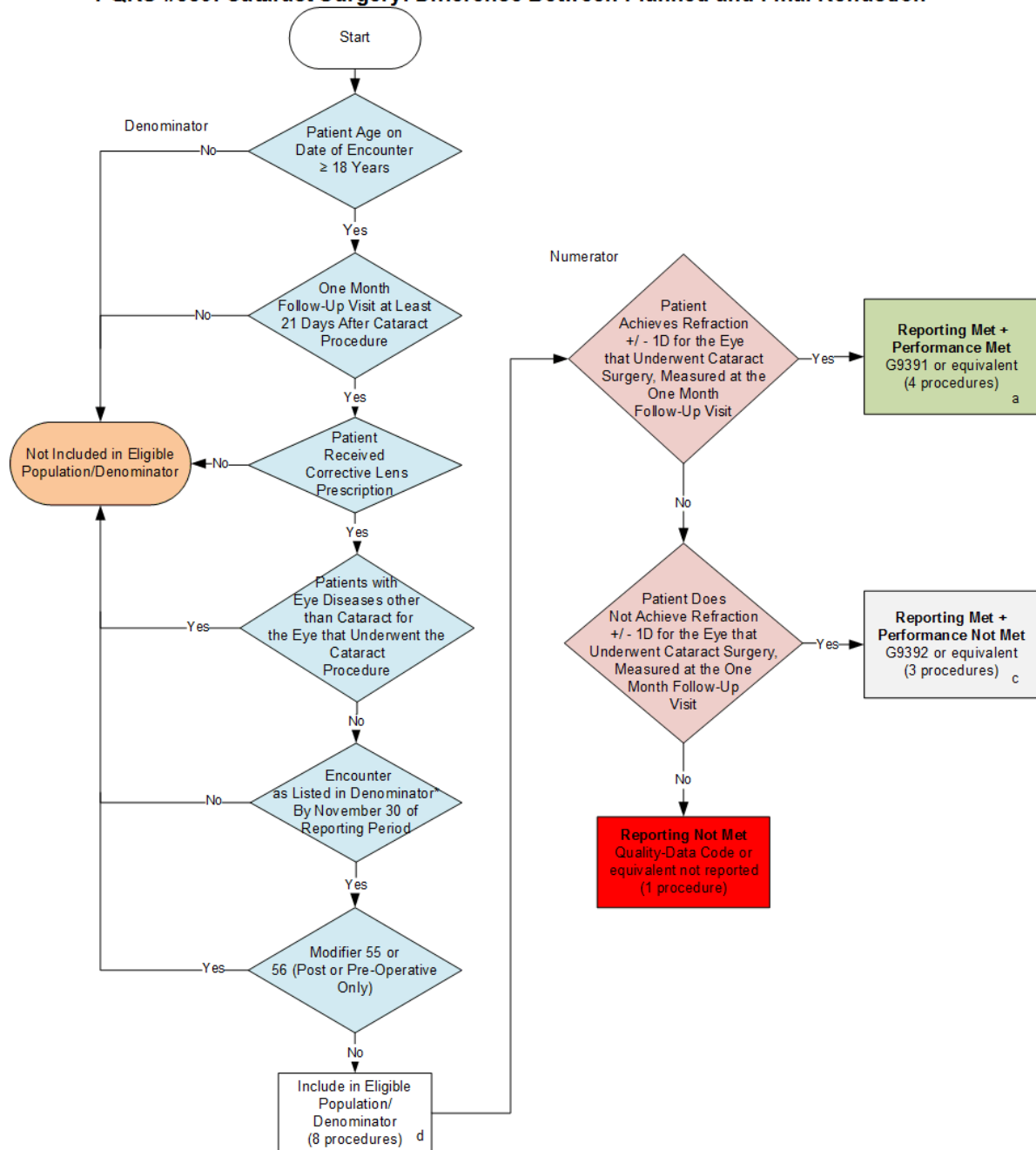


2015 Registry Individual Measure Flow
PQRS #389: Cataract Surgery: Difference Between Planned and Final Refraction



SAMPLE CALCULATIONS:

Reporting Rate=

Performance Met (a=4 procedures) + Performance Not Met (c=3 procedures) = $\frac{7 \text{ procedures}}{8 \text{ procedures}}$ = 87.50%
 Eligible Population / Denominator (d=8 procedures) =

Performance Rate=

Performance Met (a=4 procedures) = $\frac{4 \text{ procedures}}{7 \text{ procedures}}$ = 57.14%
 Reporting Numerator (7 procedures) =

*See the posted Measure Specification for specific coding and instructions to report this measure
 NOTE: Reporting Frequency: Procedure

2015 Registry Individual Measure Flow
PQRS #389: Cataract Surgery: Difference Between Planned and Final Refraction

Please refer to the specific section of the Measure Specification to identify the denominator and numerator information for use in reporting this Individual Measure.

1. Start with Denominator
2. Check Patient Age:
 - a. If Patient Age is greater than or equal to 18 Years on the Date of Service equals No, do not include in Eligible Patient Population. Stop Processing.
 - b. If Patient Age is greater than or equal to 18 Years on the Date of Service equals Yes, proceed to check One Month Follow-Up.
3. Check One Month Follow-Up:
 - a. If One Month Follow-Up Visit at Least 21 Days After Cataract Procedure equals No, do not include in Eligible Patient Population. Stop Processing.
 - b. If One Month Follow-Up Visit at Least 21 Days After Cataract Procedure equals Yes, proceed to check Patient Received Corrective Lens Prescription.
4. Check Patient Received Corrective Lens Prescription:
 - a. If Patient Received Corrective Lens Prescription equals No, do not include in Eligible Patient Population. Stop Processing.
 - b. If Patient Received Corrective Lens Prescription equals Yes, proceed to check Without Eye Diseases Other Than Cataract for the Eye that Underwent the Cataract Procedure.
5. Check Patients with Eye Diseases Other Than Cataract for the Eye that Underwent the Cataract Procedure:
 - a. If Patients with Eye Diseases Other Than Cataract for the Eye that Underwent the Cataract Procedure equals Yes, do not include in Eligible Patient Population. Stop Processing.
 - b. If Patients with Eye Diseases Other Than Cataract for the Eye that Underwent the Cataract Procedure equals No, proceed to check Encounter Performed.
6. Check Encounter Performed:
 - a. If Encounter as Listed in the Denominator equals No, do not include in Eligible Patient Population. Stop Processing.
 - b. If Encounter as Listed in the Denominator equals Yes, proceed to check Without Modifier 55 or 56.
7. Check Modifier 55 or 56:
 - a. If Modifier 55 or 56 (Post or Pre-Operative Only) equals Yes, do not include in Eligible Patient Population. Stop Processing.
 - b. If Modifier 55 or 56 (Post or Pre-Operative Only) equal No, include in Denominator Eligible Population.
8. Denominator Population:
 - a. Denominator population is all Eligible Patients in the denominator. Denominator is represented as Denominator in the Sample Calculation listed at the end of this document. Letter d equals 8 procedures in the sample calculation.

9. Start Numerator
10. Check Patient Achieves Refraction +/- 1D for the Eye that Underwent Cataract Surgery, Measured at the One Month Follow-Up Visit:
 - a. If Patient Achieves Refraction +/- 1D for the Eye that Underwent Cataract Surgery, Measured at the One Month Follow-Up Visit equals Yes, include in Reporting Met and Performance Met.
 - b. Reporting Met and Performance Met letter is represented in the Reporting Rate and Performance Rate in the Sample Calculation listed at the end of this document. Letter a equals 4 procedures in Sample Calculation.
 - c. If Patient Achieves Refraction +/- 1D for the Eye that Underwent Cataract Surgery, Measured at the One Month Follow-Up Visit equals No, proceed to check Patient Does Not Achieve Refraction +/- 1D for the Eye that Underwent Cataract Surgery, Measured at the One Month Follow-Up Visit.
11. Check Patient Does Not Achieve Refraction +/- 1D for the Eye that Underwent Cataract Surgery, Measured at the One Month Follow-Up Visit:
 - a. If Patient Does Not Achieve Refraction +/- 1D for the Eye that Underwent Cataract Surgery, Measured at the One Month Follow-Up Visit equals Yes, include in Reporting Met and Performance Not Met.
 - b. Reporting Met and Performance Not Met letter is represented in the Reporting Rate in the Sample Calculation listed at the end of this document. Letter c equals 3 procedures in the Sample Calculation.
 - c. If Patient Does Not Achieve Refraction +/- 1D for the Eye that Underwent Cataract Surgery, Measured at the One Month Follow-Up Visit equals No, proceed to proceed to Reporting Not Met.
12. Check Reporting Not Met
 - a. If Reporting Not Met equals No, Quality Data Code or equivalent was not reported. 1 procedure has been subtracted from reporting numerator in the sample calculation.

SAMPLE CALCULATIONS:

Reporting Rate=

Performance Met (a=4 procedures) + Performance Not Met (c=3 procedures) = $\frac{7 \text{ procedures}}{8 \text{ procedures}} = 87.50\%$
 Eligible Population / Denominator (d=8 procedures) =

Performance Rate=

Performance Met (a=4 procedures) = $\frac{4 \text{ procedures}}{7 \text{ procedures}} = 57.14\%$
 Reporting Numerator (7 procedures) =