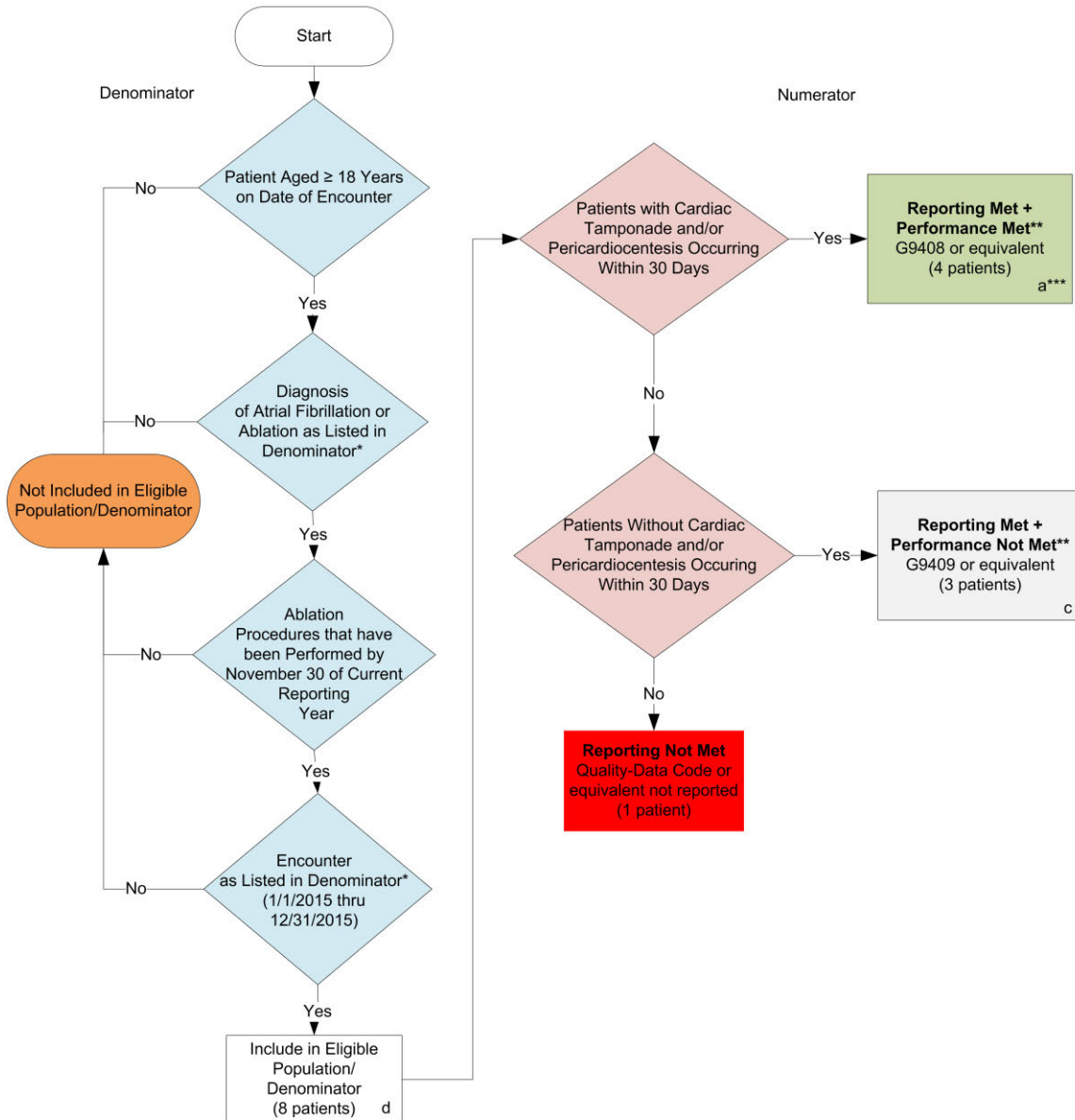


2015 Registry Individual Measure Flow
PQRS #392: HRS-12: Cardiac Tamponade and/or Pericardiocentesis
Following Atrial Fibrillation Ablation

This Measure Requires the Reporting of Five Performance Rates**



*See the posted Measure Specification for specific coding and instructions to report this measure.

***For the purpose of demonstrating the performance rates for this measure the following will apply:

a1 = Females less than 65 years of age

a2 = Males less than 65 years of age

a3 = Females 65 years of age and older

a4 = Males 65 years of age and older

A lower calculated performance rate indicates better clinical care and control

NOTE: Reporting Frequency: Patient - process

v1

2015 Registry Individual Measure Flow
PQRS #392: HRS-12: Cardiac Tamponade and/or Pericardiocentesis
Following Atrial Fibrillation Ablation

SAMPLE CALCULATIONS: Reporting Rate

Reporting Rate=

Performance Met ($a^1+a^2+a^3+a^4=4$ patients) + Performance Not Met ($c=3$ patients) = $\frac{7 \text{ patients}}{8 \text{ patients}}$ = 87.50%

SAMPLE CALCULATIONS: Performance Rate One: Females < 65 Years of Age

Performance Rate=

Performance Met ($a^1=1$ patients) = $\frac{1 \text{ patients}}{7 \text{ patients}}$ = 14.29%

Reporting Numerator (7 patients) = 7 patients

SAMPLE CALCULATIONS: Performance Rate Two: Males < 65 Years of Age

Performance Rate=

Performance Met ($a^2=1$ patients) = $\frac{1 \text{ patients}}{7 \text{ patients}}$ = 14.29%

Reporting Numerator (7 patients) = 7 patients

SAMPLE CALCULATIONS: Performance Rate Three: Females ≥ 65 Years of Age

Performance Rate=

Performance Met ($a^3=1$ patients) = $\frac{1 \text{ patients}}{7 \text{ patients}}$ = 14.29%

Reporting Numerator (7 patients) = 7 patients

SAMPLE CALCULATIONS: Performance Rate Four: Males ≥ 65 Years of Age

Performance Rate=

Performance Met ($a^4=1$ patients) = $\frac{1 \text{ patients}}{7 \text{ patients}}$ = 14.29%

Reporting Numerator (7 patients) = 7 patients

SAMPLE CALCULATIONS: Overall Performance Rate

Performance Rate=

Performance Met ($a^1+a^2+a^3+a^4=4$ patients) = $\frac{4 \text{ patients}}{7 \text{ patients}}$ = 57.14%

Reporting Numerator (7 patients) = 7 patients

*See the posted Measure Specification for specific coding and instructions to report this measure.

**For the purpose of demonstrating the performance rates for this measure the following will apply:

- a = All denominator eligible patients
- a1 = Females less than 65 years of age
- a2 = Males less than 65 years of age
- a3 = Females 65 years of age and older
- a4 = Males 65 years of age and older

A lower calculated performance rate indicates better clinical care and control
 NOTE: Reporting Frequency: Patient - process

2015 Registry Individual Measure Flow
PQRS #392: HRS-12: Cardiac Tamponade and/or Pericardiocentesis Following
Atrial Fibrillation Ablation

Please refer to the specific section of the Measure Specification to identify the denominator and numerator information for use in reporting this Individual Measure.

This measure will be calculated with 5 reporting rates be calculated and reported. Eligible Professionals should continue to report the measure as specified, with no additional steps needed to account for multiple performance rates.

NOTE: A lower calculated performance rate for this measure indicates better clinical care or control.

1. Start with Denominator
2. Check Patient Age:
 - a. If Patient Age is equal to or greater than 18 Years on Date of Encounter equals No during the measurement period, do not include in Eligible Patient Population. Stop Processing.
 - b. If Ablation Procedures that have been Performed by November 30 of Current Reporting Year equals Yes during the measurement period, proceed to check Patient Diagnosis.
3. Check Patient Diagnosis:
 - a. If Diagnosis of Atrial Fibrillation or Ablation as Listed in the Denominator equals No, do not include in Eligible Patient Population. Stop Processing.
 - b. If Diagnosis of Atrial Fibrillation or Ablation as Listed in the Denominator equals Yes, proceed to check Ablation Procedures that have been Performed by November 30 of Current Reporting Year.
4. Check Ablation Procedures that have been Performed by November 30 of Current Reporting Year:
 - a. If Ablation Procedures that have been Performed by November 30 of Current Reporting Year equals No, do not include in Eligible Patient Population. Stop Processing.
 - b. If Ablation Procedures that have been Performed by November 30 of Current Reporting Year equals Yes, proceed to check Encounter Performed.
5. Check Encounter Performed:
 - a. If Encounter as Listed in the Denominator equals No, do not include in Eligible Patient Population. Stop Processing.
 - b. If Encounter as Listed in the Denominator equals Yes, include in the Eligible population.
6. Denominator Population
 - a. Denominator population is all Eligible Patients in the denominator. Denominator is represented as Denominator in the Sample Calculation listed at the end of this document. Letter d equals 8 patients in the sample calculation.
7. Start Numerator

8. Check Patients with Cardiac Tamponade and/or Pericardiocentesis Occurring within 30 days
 - a. If Patients with Cardiac Tamponade and/or Pericardiocentesis Occurring within 30 days equals Yes, include in Reporting Met and Performance Met.
 - b. Reporting Met and Performance Met letter is represented in the Reporting Rate and Performance Rate in the Sample Calculation listed at the end of this document. Letter a equals 4 patients in Sample Calculation.
 - c. If Patients With Cardiac Tamponade and/or Pericardiocentesis Occurring Within 30 Days equals No, proceed to check Patients Without Cardiac Tamponade and/or Pericardiocentesis Occurring within 30 days.

9. Check Patients Without Cardiac Tamponade and/or Pericardiocentesis Occurring Within 30 Days:
 - a. If Patients Without Cardiac Tamponade and/or Pericardiocentesis Occurring Within 30 Days equals Yes, include in the Reporting Met and Performance Not Met.
 - b. Reporting Met and Performance Not Met letter is represented in the Reporting Rate in the Sample Calculation listed at the end of this document. Letter c equals 3 patients in the Sample Calculation.
 - c. If Patients Without Cardiac Tamponade and/or Pericardiocentesis Occurring Within 30 Days equals No, proceed to Reporting Not Met.

10. Check Reporting Not Met
 - a. If Reporting Not Met equals No, Quality Data Code or equivalent was not reported. 1 patient has been subtracted from reporting numerator in the sample calculation.

SAMPLE CALCULATIONS: Reporting Rate

Reporting Rate=

$$\frac{\text{Performance Met (a}^1\text{+a}^2\text{+a}^3\text{+a}^4\text{=4 patients)} + \text{Performance Not Met (c=3 patients)}}{\text{Eligible Population / Denominator (d=8 patients)}} = \frac{7 \text{ patients}}{8 \text{ patients}} = 87.50\%$$

SAMPLE CALCULATIONS: Performance Rate One: Females < 65 Years of Age

Performance Rate=

$$\frac{\text{Performance Met (a}^1\text{=1 patients)}}{\text{Reporting Numerator (7 patients)}} = \frac{1 \text{ patients}}{7 \text{ patients}} = 14.29\%$$

SAMPLE CALCULATIONS: Performance Rate Two: Males < 65 Years of Age

Performance Rate=

$$\frac{\text{Performance Met (a}^2\text{=1 patients)}}{\text{Reporting Numerator (7 patients)}} = \frac{1 \text{ patients}}{7 \text{ patients}} = 14.29\%$$

SAMPLE CALCULATIONS: Performance Rate Three: Females ≥ 65 Years of Age

Performance Rate=

$$\frac{\text{Performance Met (a}^3\text{=1 patients)}}{\text{Reporting Numerator (7 patients)}} = \frac{1 \text{ patients}}{7 \text{ patients}} = 14.29\%$$

SAMPLE CALCULATIONS: Performance Rate Four: Males \geq 65 Years of Age

Performance Rate=

Performance Met ($a^1=1$ patients) = 1 patients = 14.29%

Reporting Numerator (7 patients) = 7 patients

SAMPLE CALCULATIONS: Overall Performance Rate

Performance Rate=

Performance Met ($a^1+a^2+a^3+a^4=4$ patients) = 4 patients = 57.14%

Reporting Numerator (7 patients) = 7 patients

**For the purpose of demonstrating the performance rates for this measure the following will apply:

a = All denominator eligible patients

a1 = Females less than 65 years of age

a2 = Males less than 65 years of age

a3 = Females 65 years of and older

a4 = Males 65 years of age and older

A lower calculated performance rate indicates better clinical care and control

NOTE: Reporting Frequency: Patient - process