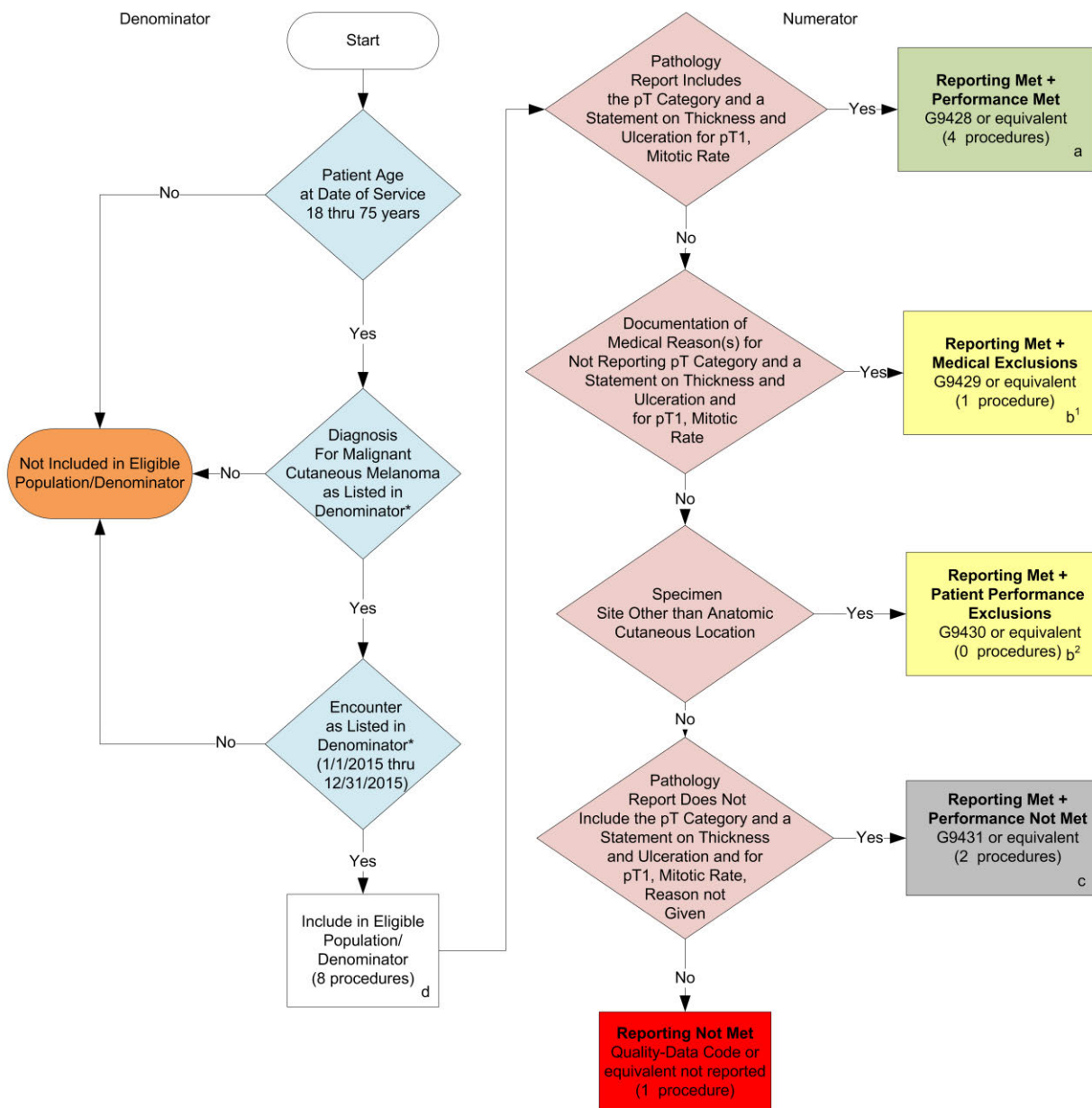


## 2015 Claims Individual Measure Flow PQRS #397: Melanoma Reporting



### SAMPLE CALCULATIONS:

#### Reporting Rate=

$$\frac{\text{Performance Met (a=4 procedures)} + \text{Performance Exclusion (b}^1\text{+b}^2\text{= 1 procedures)} + \text{Performance Not Met (c=2 procedures)}}{\text{Eligible Population / Denominator (d=8 procedures)}} = \frac{7 \text{ procedures}}{8 \text{ procedures}} = 87.50\%$$

#### Performance Rate=

$$\frac{\text{Performance Met (a=4 procedures)}}{\text{Reporting Numerator (7 procedures) - Performance Exclusion (b}^1\text{+b}^2\text{=1 procedure)}} = \frac{4 \text{ procedures}}{6 \text{ procedures}} = 66.67\%$$

\*See the posted Measure Specification for specific coding and instructions to report this measure.

NOTE: Reporting Frequency – Procedure

v1

## 2015 Registry Individual Measure Flow PQRS #397: Melanoma Reporting



### SAMPLE CALCULATIONS:

#### Reporting Rate=

$$\frac{\text{Performance Met (a=4 procedures)} + \text{Performance Exclusion (b=1 procedure)} + \text{Performance Not Met (c=2 procedures)}}{\text{Eligible Population / Denominator (d=8 procedures)}} = \frac{7 \text{ procedures}}{8 \text{ procedures}} = 87.50\%$$

#### Performance Rate=

$$\frac{\text{Performance Met (a=4 procedures)}}{\text{Reporting Numerator (7 procedures) - Performance Exclusion (b=1 procedure)}} = \frac{4 \text{ procedures}}{6 \text{ procedures}} = 66.67\%$$

\*See the posted Measure Specification for specific coding and instructions to report this measure.

NOTE: Reporting Frequency – Procedure

v1

## **2015 Claims Individual Measure Flow**

### **PQRS #397: Melanoma Reporting**

Please refer to the specific section of the Measure Specification to identify the denominator and numerator information for use in reporting this Individual Measure.

1. Start with Denominator
2. Check Patient Age:
  - a. If the Age is 18 thru 75 years of age at Date of Service and equals No during the measurement period, do not include in Eligible Patient Population. Stop Processing.
  - b. If the Age is 18 thru 75 years of age at Date of Service and equals Yes during the measurement period, proceed to check Patient Diagnosis.
3. Check Patient Diagnosis:
  - a. If Diagnosis of Malignant Cutaneous Melanoma as Listed in the Denominator equals No, do not include in Eligible Patient Population. Stop Processing.
  - b. If Diagnosis of Malignant Cutaneous Melanoma as Listed in the Denominator equals Yes, proceed to check Encounter Performed.
4. Check Encounter Performed:
  - a. If Encounter as Listed in Denominator equals No, do not include in Eligible Patient Population. Stop Processing.
  - b. If Encounter as Listed in Denominator equals Yes, include in the Eligible population.
5. Denominator Population:
  - a. Denominator population is all Eligible Patients in the denominator. Denominator is represented as Denominator in the Sample Calculation listed at the end of this document. Letter d equals 8 patients in the sample calculation.
6. Start Numerator
7. Check Pathology Report Includes the pT Category and a Statement on Thickness and Ulceration for pT1 Mitotic Rate:
  - a. If Pathology Report Includes the pT Category and a Statement on Thickness and Ulceration for pT1 Mitotic Rate equals Yes, include in Reporting Met and Performance Met.
  - b. Reporting Met and Performance Met letter is represented in the Reporting Rate and Performance Rate in the Sample Calculation listed at the end of this document. Letter a equals 4 procedures in Sample Calculation.
  - c. If Pathology Report Includes the pT Category and a Statement on Thickness and Ulceration for pT1 Mitotic Rate equals No, proceed to check Documentation of Medical Reasons for Not Reporting pT Category and a Statement on Thickness and Ulceration and for pT1 Mitotic Rate.

8. Check Documentation of Medical Reasons for Not Reporting pT Category and a Statement on Thickness and Ulceration and for pT1 Mitotic Rate:
  - a. If Documentation of Medical Reasons for Not Reporting pT Category and a Statement on Thickness and Ulceration and for pT1 Mitotic Rate equals Yes, include in the Reporting Met and Performance Exclusion.
  - b. Reporting Met and Performance Exclusion letter is represented in the Reporting Rate and Performance Rate in the Sample Calculation listed at the end of this document. Letter b<sup>1</sup> equals 1 procedure in the Sample Calculation.
  - c. If Documentation of Medical Reasons for Not Reporting pT Category and a Statement on Thickness and Ulceration and for pT1 Mitotic Rate equals No, proceed to check Specimen Site Other than Anatomic Cutaneous Location.
9. Check Specimen Site Other than Anatomic Cutaneous Location:
  - a. If Specimen Site Other than Anatomic Cutaneous Location equals Yes, include in the Reporting Met and Performance Exclusion.
  - b. Reporting Met and Patient Performance Exclusion letter is represented in the Reporting Rate and Performance Rate in the Sample Calculation listed at the end of this document. Letter b<sup>2</sup> equals 0 procedures in the Sample Calculation.
  - c. If Specimen Site Other than Anatomic Cutaneous Location, Reason Not Specified equals No, proceed to check Pathology Report Does Not Include the pT Category and a Statement on Thickness and Ulceration and for pT1, Mitotic Rate, Reason not Given.
10. Pathology Report Does Not Include the pT Category and a Statement on Thickness and Ulceration and for pT1, Mitotic Rate, Reason not Given:
  - a. If Pathology Report Does Not Include the pT Category and a Statement on Thickness and Ulceration and for pT1, Mitotic Rate equals Yes, include in Reporting Met and Performance Not Met.
  - b. Reporting Met and Performance Not Met letter is represented in the Reporting Rate in the Sample Calculation listed at the end of this document. Letter c equals 2 procedures in the Sample Calculation.
  - c. Pathology Report Does Not Include the pT Category and a Statement on Thickness and Ulceration and for pT1, Mitotic Rate, Reason not Given equals No, proceed to Reporting Not Met.
11. Check Reporting Not Met:
  - a. If Reporting Not Met, the Quality Data Code or equivalent was not reported. 1 procedure has been subtracted from the reporting numerator in sample calculation.

#### SAMPLE CALCULATIONS:

##### Reporting Rate=

$$\frac{\text{Performance Met (a=4 procedures)} + \text{Performance Exclusion (b}^1 + \text{b}^2 = 1 \text{ procedures)} + \text{Performance Not Met (c=2 procedures)}}{\text{Eligible Population / Denominator (d=8 procedures)}} = \frac{7 \text{ procedures}}{8 \text{ procedures}} = 87.50\%$$

##### Performance Rate=

$$\frac{\text{Performance Met (a=4 procedures)}}{\text{Reporting Numerator (7 procedures) - Performance Exclusion (b}^1 + \text{b}^2 = 1 \text{ procedure)}} = \frac{4 \text{ procedures}}{6 \text{ procedures}} = 66.67\%$$

## **2015 Registry Individual Measure Flow**

### **PQRS #397: Melanoma Reporting**

Please refer to the specific section of the Measure Specification to identify the denominator and numerator information for use in reporting this Individual Measure.

1. Start with Denominator
2. Check Patient Age:
  - a. If the Age is 18 thru 75 years of age at Date of Service and equals No during the measurement period, do not include in Eligible Patient Population. Stop Processing.
  - b. If the Age is 18 thru 75 years of age at Date of Service and equals Yes during the measurement period, proceed to check Patient Diagnosis.
3. Check Patient Diagnosis:
  - a. If Diagnosis of Malignant Cutaneous Melanoma as Listed in the Denominator equals No, do not include in Eligible Patient Population. Stop Processing.
  - b. If Diagnosis of Malignant Cutaneous Melanoma as Listed in the Denominator equals Yes, proceed to check Encounter Performed.
4. Check Encounter Performed:
  - a. If Encounter as Listed in Denominator equals No, do not include in Eligible Patient Population. Stop Processing.
  - b. If Encounter as Listed in Denominator equals Yes, proceed to check Specimen Site Other than Anatomic Cutaneous Location
5. Check Specimen Site Other than Anatomic Cutaneous Location or G9430:
  - a. If Specimen Site Other than Anatomic Cutaneous Location or G9430 equals Yes, do not include in Eligible Patient Population. Stop Processing.
  - b. If Specimen Site Other than Anatomic Cutaneous Location or G9430 equals No, include in the Eligible population
6. Denominator Population:
  - a. Denominator population is all Eligible Patients in the denominator. Denominator is represented as Denominator in the Sample Calculation listed at the end of this document. Letter d equals 8 patients in the sample calculation.
7. Start Numerator
8. Check Pathology Report Includes the pT Category and a Statement on Thickness and Ulceration for pT1 Mitotic Rate:
  - a. If Pathology Report Includes the pT Category and a Statement on Thickness and Ulceration for pT1 Mitotic Rate equals Yes, include in Reporting Met and Performance Met.
  - b. Reporting Met and Performance Met letter is represented in the Reporting Rate and Performance Rate in the Sample Calculation listed at the end of this document. Letter a equals 4 procedures in Sample Calculation.

- c. If Pathology Report Includes the pT Category and a Statement on Thickness and Ulceration for pT1 Mitotic Rate equals No, proceed to check Documentation of Medical Reasons for Not Reporting pT Category and a Statement on Thickness and Ulceration and for pT1 Mitotic Rate.
9. Check Documentation of Medical Reasons for Not Reporting pT Category and a Statement on Thickness and Ulceration and for pT1 Mitotic Rate:
  - a. If Documentation of Medical Reasons for Not Reporting pT Category and a Statement on Thickness and Ulceration and for pT1 Mitotic Rate equals Yes, include in the Reporting Met and Performance Exclusion.
  - b. Reporting Met and Performance Exclusion letter is represented in the Reporting Rate and Performance Rate in the Sample Calculation listed at the end of this document. Letter b equals 1 procedure in the Sample Calculation.
  - c. If Documentation of Medical Reasons for Not Reporting pT Category and a Statement on Thickness and Ulceration and for pT1 Mitotic Rate equals No, proceed to check Pathology Report Does Not Include the pT Category and a Statement on Thickness and Ulceration and for pT1, Mitotic Rate, Reason not Given.
10. Check Pathology Report Does Not Include the pT Category and a Statement on Thickness and Ulceration and for pT1, Mitotic Rate, Reason not Given:
  - a. If Pathology Report Does Not Include the pT Category and a Statement on Thickness and Ulceration and for pT1, Mitotic Rate, Reason not Given equals Yes, include in Reporting Met and Performance Not Met.
  - b. Reporting Met and Performance Not Met letter is represented in the Reporting Rate in the Sample Calculation listed at the end of this document. Letter c equals 2 procedures in the Sample Calculation.
  - c. Pathology Report Does Not Include the pT Category and a Statement on Thickness and Ulceration and for pT1, Mitotic Rate, Reason not Given equals No, proceed to Reporting Not Met.
11. Check Reporting Not Met:
  - a. If Reporting Not Met, the Quality Data Code or equivalent was not reported. 1 procedure has been subtracted from the reporting numerator in sample calculation.

#### SAMPLE CALCULATIONS:

##### Reporting Rate=

$$\frac{\text{Performance Met (a=4 procedures)} + \text{Performance Exclusion (b=1 procedure)} + \text{Performance Not Met (c=2 procedures)}}{\text{Eligible Population / Denominator (d=8 procedures)}} = \frac{7 \text{ procedures}}{8 \text{ procedures}} = 87.50\%$$

##### Performance Rate=

$$\frac{\text{Performance Met (a=4 procedures)}}{\text{Reporting Numerator (7 procedures) - Performance Exclusion (b=1 procedure)}} = \frac{4 \text{ procedures}}{6 \text{ procedures}} = 66.67\%$$