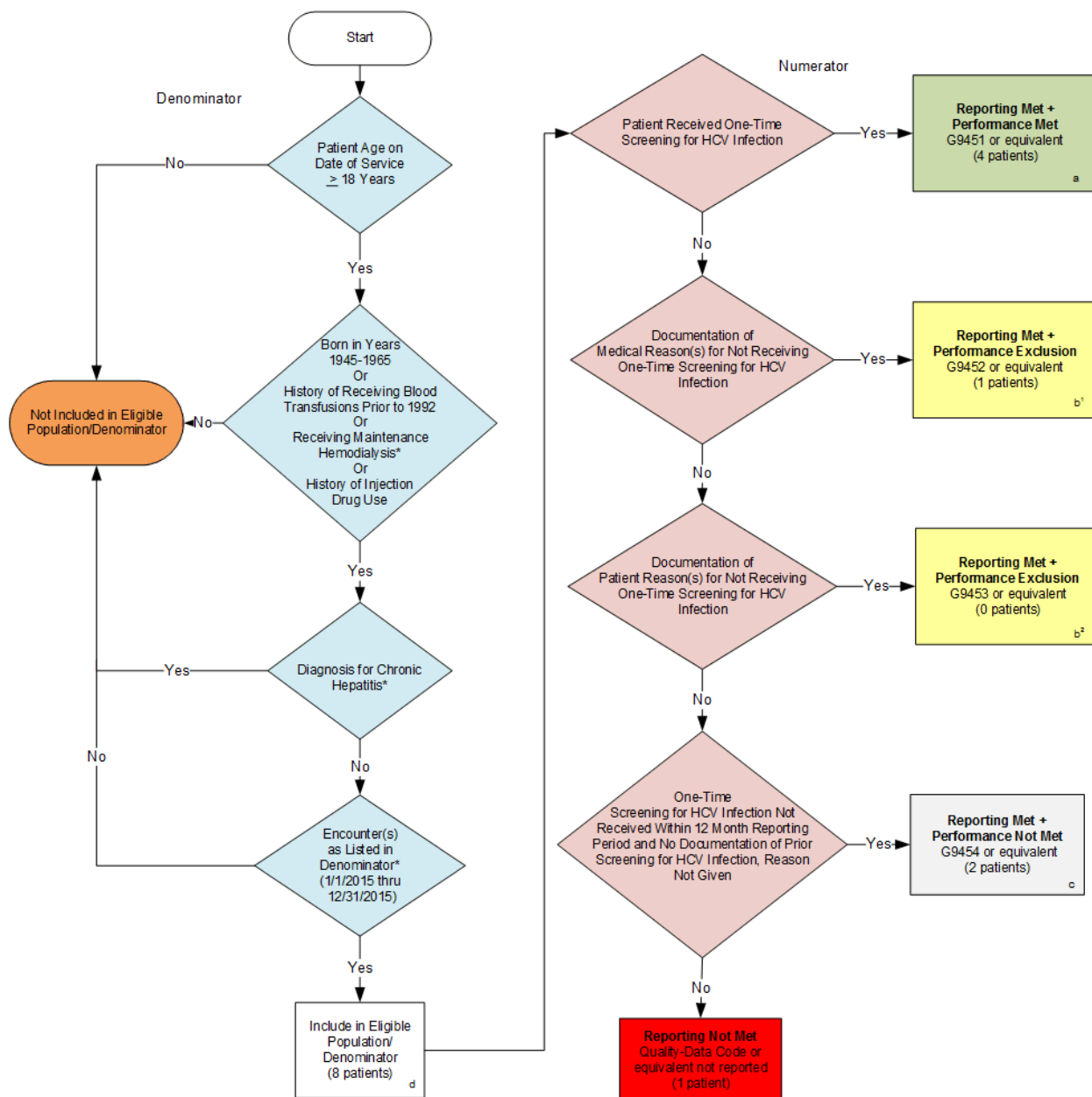


**2015 Registry Individual Measure Flow**  
**PQRS #400: Hepatitis C: One-Time Screening for Hepatitis C Virus (HCV) for Patients at Risk**



**SAMPLE CALCULATIONS:**

**Reporting Rate=**  

$$\frac{\text{Performance Met (a=4 patients)} + \text{Performance Exclusion (b¹+b²=1 patient)} + \text{Performance Not Met (c=2 patients)}}{\text{Eligible Population / Denominator (d=8 patients)}} = \frac{7 \text{ patients}}{8 \text{ patients}} = 87.50\%$$

**Performance Rate=**  

$$\frac{\text{Performance Met (a=4 patients)}}{\text{Reporting Numerator (7 patients) - Performance Exclusion (b¹+b²=1 patient)}} = \frac{4 \text{ patients}}{6 \text{ patients}} = 66.66\%$$

\*See the posted Measure Specification for specific coding and instructions to report this measure.

NOTE: Reporting Frequency: Patient-Process

**2015 Registry Individual Measure Flow**  
**PQRS #400: Hepatitis C: One-Time Screening for Hepatitis C Virus (HCV) for**  
**Patients at Risk**

Please refer to the specific section of the Measure Specification to identify the denominator and numerator information for use in reporting this Individual Measure.

1. Start with Denominator
2. Check Patient Age:
  - a. If Patient Age on Date of Service is equal to or greater than 18 Years equals No during the measurement period, do not include in Eligible Patient Population. Stop Processing.
  - b. If Patient Age on Date of Service is equal to or greater than 18 Years equals Yes during the measurement period, proceed to check Patient History.
3. Check Patient History:
  - a. If Born in Years 1945-1965 or History of Receiving Blood Transfusions Prior to 1992 or Receiving Maintenance Hemodialysis or History of Injection Drug Use equals No, do not include in Eligible Population. Stop Processing.
  - b. If Born in Years 1945-1965 or History of Receiving Blood Transfusions Prior to 1992 or Receiving Maintenance Hemodialysis or History of Injection Drug Use equals Yes, proceed to check Diagnosis for Chronic Hepatitis.
4. Check Diagnosis for Chronic Hepatitis:
  - a. If Diagnosis for Chronic Hepatitis equals Yes, do not include in Eligible Population. Stop Processing.
  - b. If Diagnosis for Chronic Hepatitis equals No, proceed to check Encounter Performed.
8. Check Encounter Performed:
  - a. If Encounter as listed in the denominator equals No, do not include in Eligible Patient Population. Stop Processing.
  - b. If Encounter as listed in the denominator equals Yes, include in the Eligible population.
9. Denominator Population:
  - a. Denominator population is all Eligible Patients in the denominator. Denominator is represented as Denominator in the Sample Calculation listed at the end of this document. Letter d equals 8 patients in the sample calculation.
10. Start Numerator
11. Check Patient Received One-Time Screening for HCV Infection:
  - a. If Patient Received One-Time Screening for HCV Infection equals Yes, include in Reporting Met and Performance Met.
  - b. Reporting Met and Performance Met letter is represented in the Reporting Rate and Performance Rate in the Sample Calculation listed at the end of this document. Letter a equals 4 patients in Sample Calculation.

- c. If Patient Received One-Time Screening for HCV Injection equals No, proceed to check Documentation of Medical Reason(s) for Not Receiving One-Time Screening for HCV Infection.
12. Check Documentation of Medical Reason(s) for Not Receiving One-Time Screening for HCV Infection:
  - a. If Documentation of Medical Reason(s) for Not Receiving One-Time Screening for HCV Infection equals Yes, include in Reporting Met and Performance Exclusion.
  - b. Reporting Met and Performance Exclusion letter is represented in the Reporting Rate in and Performance Rate in the Sample Calculation listed at the end of this document. Letter b<sup>1</sup> equals 1 patient in the Sample Calculation.
  - c. If Documentation of Medical Reason(s) for Not Receiving One-Time Screening for HCV Infection equals No, proceed to check Documentation of Patient Reason(s) for Not Receiving One-Time Screening for HCV Infection.
13. Check Documentation of Patient Reason(s) for Not receiving One-Time Screening for HCV Infection:
  - a. If Documentation of Patient Reason(s) for Not Receiving One-Time Screening for HCV infection equals Yes, include in Reporting Met and Performance Exclusion.
  - b. Reporting Met and Performance Exclusion letter is represented in the Reporting Rate and Performance Rate in the Sample Calculation listed at the end of this document. Letter b<sup>2</sup> equals 0 patients in the Sample Calculation.
  - c. If Documentation of Patient Reason(s) for Not Receiving One-Time Screening for HCV Infection equals No, proceed to check One-Time Screening for HCV Infection Not Received Within 12 Month Reporting Period and Not Documentation of Prior Screening for HCV Infection, Reason Not Given.
14. Check One-Time Screening for HCV Infection Not Received Within 12 Month Reporting Period and No Documentation or Prior Screening for HCV Infection, Reason Not Given:
  - a. If One-Time Screening for HCV Infection Not Received Within 12 Month Reporting Period and No Documentation or Prior Screening for HCV Infection, Reason Not Given equals Yes, include in Reporting Met and Performance Not Met.
  - b. Reporting Met and Performance Not Met letter is represented in the Reporting Rate in the Sample Calculation listed at the end of this document. Letter c equals 2 patients in the Sample Calculation.
  - c. If One-Time Screening for HCV Infection Not Received Within 12 Month Reporting Period and No Documentation or Prior Screening for HCV Infection, Reason Not Given equals No, proceed to Reporting Not Met.
15. Reporting Not Met:
  - a. If Reporting Not Met, Quality Data Code or equivalent was not reported. 1 patient has been subtracted from reporting numerator in the sample calculation.

#### **SAMPLE CALCULATIONS:**

##### **Reporting Rate=**

$$\frac{\text{Performance Met (a=4 patients)} + \text{Performance Exclusion (b}^1\text{+b}^2\text{=1 patient)} + \text{Performance Not Met (c=2 patients)}}{\text{Eligible Population / Denominator (d=8 patients)}} = \frac{7 \text{ patients}}{8 \text{ patients}} = 87.50\%$$

##### **Performance Rate=**

$$\frac{\text{Performance Met (a=4 patients)}}{\text{Reporting Numerator (7 patients) - Performance Exclusion (b}^1\text{+b}^2\text{=1 patient)}} = \frac{4 \text{ patients}}{6 \text{ patients}} = 66.66\%$$