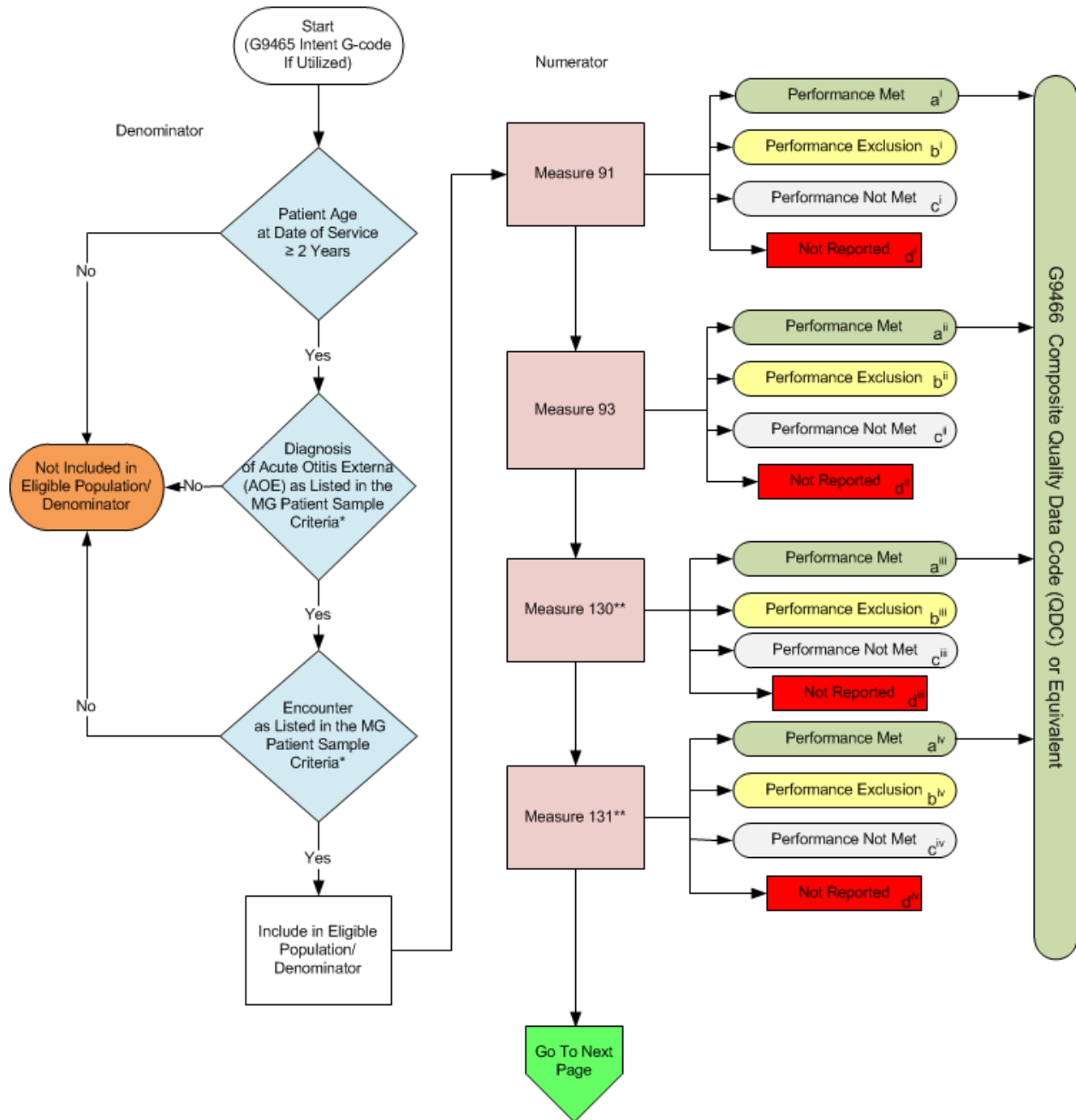


2015 Measures Group (MG) Flow Acute Otitis Externa (AOE)

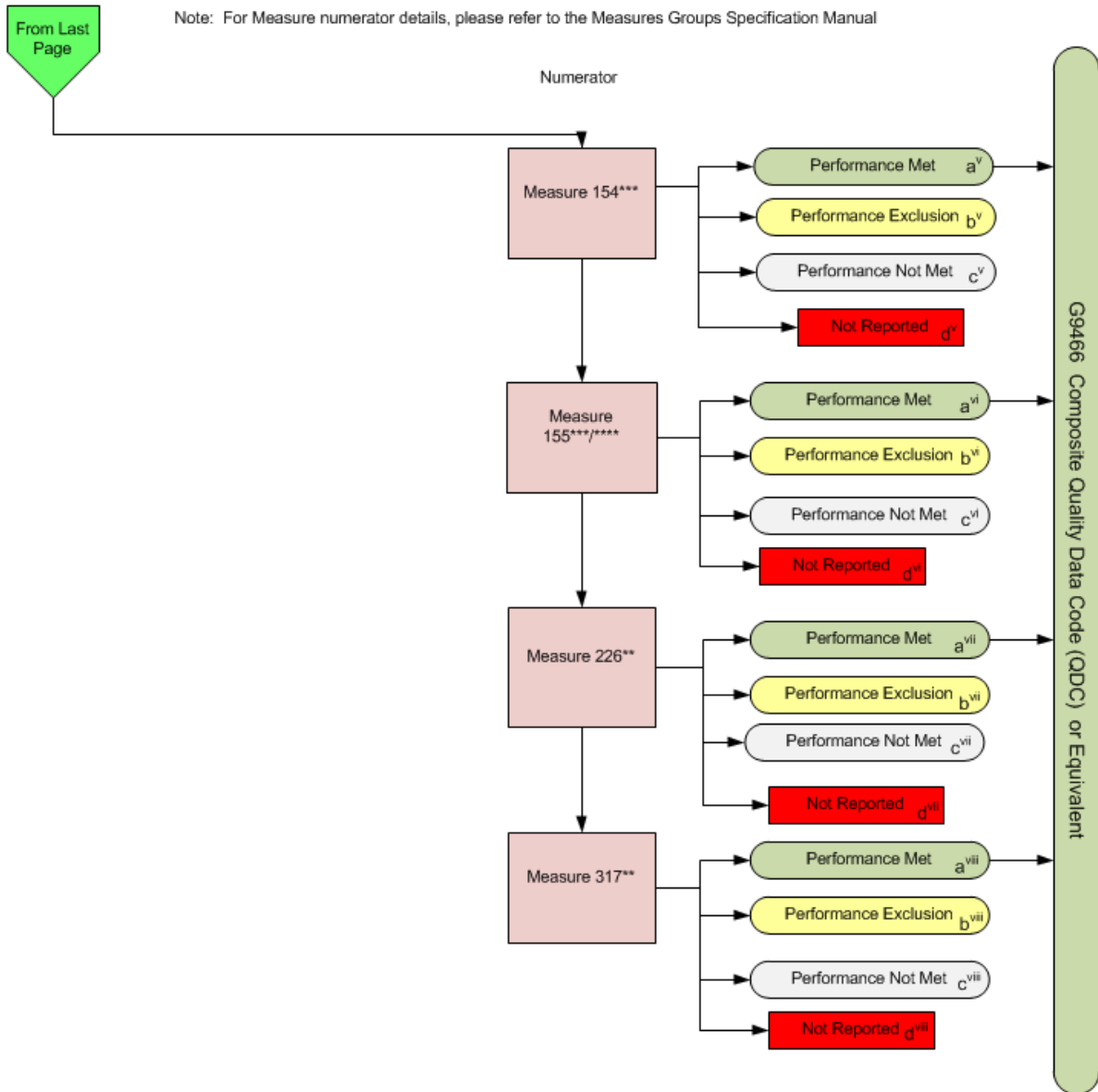
Note: For Measure numerator details, please refer to the Measures Groups Specification Manual



*See the posted 2015 Measures Groups Specifications Manual for Patient Sample Criteria, specific coding and instructions to report this measures group.

**Measures #130, #131, #226 and #317 need only be reported for patients age 18 years and older.

2015 Measures Group (MG) Flow Acute Otitis Externa (AOE)



**Measures #130, #131, #226 and #317 need only be reported for patients age 18 years and older.

***Measures #154 and #155 need only be reported for patients 65 years and older.

****Measure #155 only needs to be reported when patients are identified in Measure #154 as having a falls risk assessment which indicates the patient has documentation of two or more falls in the past year or any fall with injury in the past year.

2015 Measures Group (MG) Flow Acute Otitis Externa (AOE)

Scenarios for Reporting (Patient) and Performance (Measure) Algorithms:

a= Performance Met; b=Performance Exclusion; c=Performance Not Met; d=Not Reported; e=Not Applicable

	Measure 91 (i)	Measure 93 (ii)	Measure 130** (iii)	Measure 131** (iv)	Measure 154*** (v)	Measure 155****/**** (vi)	Measure 226** (vii)	Measure 317** (viii)
Patient X Age 65 Years	Met (a ⁱ)	Met (a ⁱⁱ)	Met (a ⁱⁱⁱ)	Met (a ^{iv})	Met (a ^v)	Met (a ^{vi})	Met (a ^{vii})	Met (a ^{viii})
Patient Y Age 10 Years	Met (a ⁱ)	Exclusion (b ⁱ)	Not Applicable (e ⁱⁱⁱ)	Not Applicable (e ^{iv})	Not Applicable (e ^v)	Not Applicable (e ^{vi})	Not Applicable (e ^{vii})	Not Applicable (e ^{viii})
Patient Z Age 25 Years	Met (a ⁱ)	Not Met (c ⁱ)	Met (a ⁱⁱⁱ)	Not Reported (d ^{iv})	Not Applicable (e ^v)	Not Applicable (e ^{vi})	Met (a ^{vii})	Met (a ^{viii})

Reporting Algorithm[^]

Patient X [aⁱ,aⁱⁱ,aⁱⁱⁱ,a^{iv},a^v,a^{vi},a^{vii},a^{viii}] + Patient Y [aⁱ,bⁱⁱ,eⁱⁱⁱ,e^{iv},e^v,e^{vi},e^{vii},e^{viii}] + Patient Z [aⁱ,cⁱⁱ,aⁱⁱⁱ,d^{iv},e^v,e^{vi},a^{vii},a^{viii}] = 1+1+0 =
2 of the Required 20 Patient Sample Reported

Performance Algorithms

Measure 91

Performance Met (3) = $\frac{3}{3} = 100.00\%$
Reported QDC for eligible patient (3) – Performance Exclusion (0)

Measure 93

Performance Met (1) = $\frac{1}{2} = 50.00\%$
Reported QDC for eligible patient (3) – Performance Exclusion (1)

Measure 130

Performance Met (2) = $\frac{2}{2} = 100.00\%$
Reported QDC for eligible patient (2) – Performance Exclusion (0)

Measure 131

Performance Met (1) = $\frac{1}{1} = 100.00\%$
Reported QDC for eligible patient (1) – Performance Exclusion (0)

Measure 154

Performance Met (1) = $\frac{1}{1} = 100.00\%$
Reported QDC for eligible patient (1) – Performance Exclusion (0)

Measure 155

Performance Met (1) = $\frac{1}{1} = 100.00\%$
Reported QDC for eligible patient (1) – Performance Exclusion (0)

Measure 226

Performance Met (2) = $\frac{2}{2} = 100.00\%$
Reported QDC for eligible patient (2) – Performance Exclusion (0)

Measure 317

Performance Met (2) = $\frac{2}{2} = 100.00\%$
Reported QDC for eligible patient (2) – Performance Exclusion (0)

**Measures #130, #131, #226 and #317 need only be reported for patients age 18 years and older.

***Measures #154 and #155 need only be reported for patients 65 years and older.

****Measure #155 only needs to be reported when patients are identified in Measure #154 as having a falls risk assessment which indicates the patient has documentation of two or more falls in the past year or any fall with injury in the past year.

*Reporting of all measures contained in measures group, per eligible patient, equals one.

2015 Measures Group (MG) Flow Acute Otitis Externa (AOE)

Please refer to the specific section of the 2015 PQRS Measures Groups Specifications Manual to identify specific coding and instructions to report the Acute Otitis Externa (AOE) Measures Group Patient Sample Criteria (denominator), individual measures, and numerator options information for use in reporting this Measures Group.

1. Start with G9465 Intent G-code if Utilized
2. Check Patient Age:
 - a. If the Age is greater than or equal to 2 years of age at Date of Service equals No, do not include in Eligible Population/Denominator. Stop Processing.
 - b. If the Age is greater than or equal to 2 years of age at Date of Service equals Yes, proceed to check Patient Diagnosis.
3. Check Patient Diagnosis:
 - a. If Diagnosis of Acute Otitis Externa (AOE) as Listed in the MG Patient Sample Criteria equals No, do not include in Eligible Population/Denominator. Stop Processing.
 - b. If Diagnosis of Acute Otitis Externa (AOE) as Listed in the MG Patient Sample Criteria equals Yes, proceed to check Encounter Performed.
4. Check Encounter Performed:
 - a. If Encounter as Listed in the MG Patient Sample Criteria equals No, do not include in Eligible Population. Stop Processing.
 - b. If Encounter as Listed in the MG Patient Sample Criteria equals Yes, include in the Eligible Population/Denominator.
5. Denominator Population
 - a. Include in Eligible Population/Denominator is all eligible patients who meet the Patient Sample Criteria (denominator) for the Measures Group. For each measure within the measures group each numerator option is represented by a letter which is used in the Scenarios for Reporting and Performance Algorithms at the end of this document.
6. Start Numerator Options for Measures within the Measures Group
7. Composite Quality Data Code (QDC) G9466 has been created for registries that utilize claims data. This QDC may be reported in lieu of individual QDCs when all quality clinical actions for all applicable measures within the group have been performed for this patient.
8. Measure 91
 - a. Numerator option Performance Met has an arrow pointing to G9466 Composite G-Code or Equivalent. Performance Met is represented by letter aⁱ.
 - b. Numerator option Performance Exclusion is represented by letter bⁱ.
 - c. Numerator option Performance Not Met is represented by letter cⁱ.
 - d. Numerator option Not Reported is represented by letter dⁱ.
9. Measure 93
 - a. Numerator option Performance Met has an arrow pointing to G9466 Composite G-Code or Equivalent. Performance Met is represented by letter aⁱⁱ.

- b. Numerator option Performance Exclusion is represented by letter bⁱⁱ.
- c. Numerator option Performance Not Met is represented by letter cⁱⁱ.
- d. Numerator option Not Reported is represented by letter dⁱⁱ.

10. Measure 130

- a. Measure #130 only needs to be reported for patients age 18 years and older. When measure #130 is Not Applicable it is represented by letter eⁱⁱⁱ in the Scenarios for Reporting Algorithms.
- b. Numerator option Performance Met has an arrow pointing to G9466 Composite G-Code or Equivalent. Performance Met is represented by letter aⁱⁱⁱ.
- c. Numerator option Performance Exclusion is represented by letter bⁱⁱⁱ.
- d. Numerator option Performance Not Met is represented by letter cⁱⁱⁱ.
- e. Numerator option Not Reported is represented by letter dⁱⁱⁱ.

11. Measure 131

- a. Measure #131 only needs to be reported for patients age 18 years and older. When measure #131 is Not Applicable it is represented by letter e^{iv} in the Scenarios for Reporting Algorithms.
- b. Numerator option Performance Met has an arrow pointing to G9466 Composite G-Code or Equivalent. Performance Met is represented by letter a^{iv}.
- c. Numerator option Performance Exclusion is represented by letter b^{iv}.
- d. Numerator option Performance Not Met is represented by letter c^{iv}.
- e. Numerator option Not Reported is represented by letter d^{iv}.

12. Measure 154

- a. Measure #154 only needs to be reported for patients 65 years and older. When measure #154 is Not Applicable it is represented by letter e^v in the Scenarios for Reporting Algorithms.
- b. Numerator option Performance Met has an arrow pointing to G9466 Composite G-Code or Equivalent. Performance Met is represented by letter a^v.
- c. Numerator option Performance Exclusion is represented by letter b^v.
- d. Numerator option Performance Not Met is represented by letter c^v.
- e. Numerator option Not Reported is represented by letter d^v.

13. Measure 155

- a. Measure #155 only needs to be reported for patients 65 years and older. When measure #155 is Not Applicable it is represented by letter e^{vi} in the Scenarios for Reporting Algorithms.
- b. Numerator option Performance Met has an arrow pointing to G9466 Composite G-Code or Equivalent. Performance Met is represented by letter a^{vi}.
- c. Measure #155 only needs to be reported when patients are identified in Measure #154 as having a falls risk assessment which indicates the patient has documentation of two or more falls in the past year or any fall with injury in the past year.
- d. Numerator option Performance Exclusion is represented by letter b^{vi}.
- e. Numerator option Performance Not Met is represented by letter c^{vi}.
- f. Numerator option Not Reported is represented by letter d^{vi}.

14. Measure 226

- a. Measure #226 only needs to be reported for patients age 18 years and older. When measure #226 is Not Applicable it is represented by letter e^{vii} in the Scenarios for Reporting Algorithms.

- b. Numerator option Performance Met has an arrow pointing to G9466 Composite G-Code or Equivalent. Performance Met is represented by letter a^{vii}.
- c. Numerator option Performance Exclusion is represented by letter b^{vii}.
- d. Numerator option Performance Not Met is represented by letter c^{vii}.
- e. Numerator option Not Reported is represented by letter d^{vii}.

15. Measure 317

- a. Measure #317 only needs to be reported for patients age 18 years and older. When measure #317 is Not Applicable it is represented by letter e^{viii} in the Scenarios for Reporting Algorithms.
- b. Numerator option Performance Met has an arrow pointing to G9466 Composite G-Code or Equivalent. Performance Met is represented by letter a^{viii}.
- c. Numerator option Performance Exclusion is represented by letter b^{viii}.
- d. Numerator option Performance Not Met is represented by letter c^{viii}.
- e. Numerator option Not Reported is represented by letter d^{viii}.

16. Scenarios for Reporting and Performance Algorithms

17. Patient X Age 65 Years

- a. Patient X Met Measure 91 (represented by aⁱ)
- b. Patient X Met Measure 93 (represented by aⁱⁱ)
- c. Patient X Met Measure 130 (represented by aⁱⁱⁱ)
- d. Patient X Met Measure 131 (represented by a^{iv})
- e. Patient X Met Measure 154 (represented by a^v)
- f. Patient X Met Measure 155 (represented by a^{vi})
- g. Patient X Met Measure 226 (represented by a^{vii})
- h. Patient X Met Measure 317 (represented by a^{viii})

18. Patient Y Age 10 Years

- a. Patient Y Met Measure 91 (represented by aⁱ)
- b. Patient Y Exclusion Reported for Measure 93 (represented by bⁱⁱ)
- c. Patient Y Not Applicable for Measure 130 (represented by eⁱⁱⁱ)
- d. Patient Y Not Applicable for Measure 131 (represented by e^{iv})
- e. Patient Y Not Applicable for Measure 154 (represented by e^v)
- f. Patient Y Not Applicable for Measure 155 (represented by e^{vi})
- g. Patient Y Not Applicable for Measure 226 (represented by e^{vii})
- h. Patient Y Not Applicable for Measure 317 (represented by e^{viii})

19. Patient Z Age 25 Years

- a. Patient Z Met Measure 91 (represented by aⁱ)
- b. Patient Z Not Met but Reported Measure 93 (represented by cⁱⁱ)
- c. Patient Z Met Measure 130 (represented by aⁱⁱⁱ)
- d. Patient Z did Not Report Measure 131 (represented by d^{iv})
- e. Patient Z Not Applicable for Measure 154 (represented by e^v)
- f. Patient Z Not Applicable for Measure 155 (represented by e^{vi})
- g. Patient Z Met Measure 226 (represented by a^{vii})
- h. Patient Z Met Measure 317 (represented by a^{viii})

20. Reporting Algorithm

- a. Reporting of all applicable measures contained in the measures group, per eligible patient, equals one

- b. Patient X Reporting equals 1 Plus Patient Y Reporting equals 1 Plus Patient Z Reporting equals 0 for a total of 2 of the Required 20 Patient Sample Reported

21. Performance Algorithms

22. Measure 91

- a. Performance Met equals 3 divided by Reported QDC for 3 eligible patients minus 0 Performance Exclusions equals 100% Performance Rate

23. Measure 93

- a. Performance Met equals 1 divided by Reported QDC for 3 eligible patients minus 1 Performance Exclusion equals 50% Performance Rate

24. Measure 130

- a. Performance Met equals 2 divided by Reported QDC for 2 eligible patients minus 0 Performance Exclusions equals 100% Performance Rate

25. Measure 131

- a. Performance Met equals 1 divided by Reported QDC for 1 eligible patient minus 0 Performance Exclusions equals 100% Performance Rate

26. Measure 154

- a. Performance Met equals 1 divided by Reported QDC for 1 eligible patient minus 0 Performance Exclusions equals 100% Performance Rate

27. Measure 155

- a. Performance Met equals 1 divided by Reported QDC for 1 eligible patient minus 0 Performance Exclusions equals 100% Performance Rate

28. Measure 226

- a. Performance Met equals 2 divided by Reported QDC for 2 eligible patients minus 0 Performance Exclusions equals 100% Performance Rate

29. Measure 317

- a. Performance Met equals 2 divided by Reported QDC for 2 eligible patients minus 0 Performance Exclusions equals 100% Performance Rate