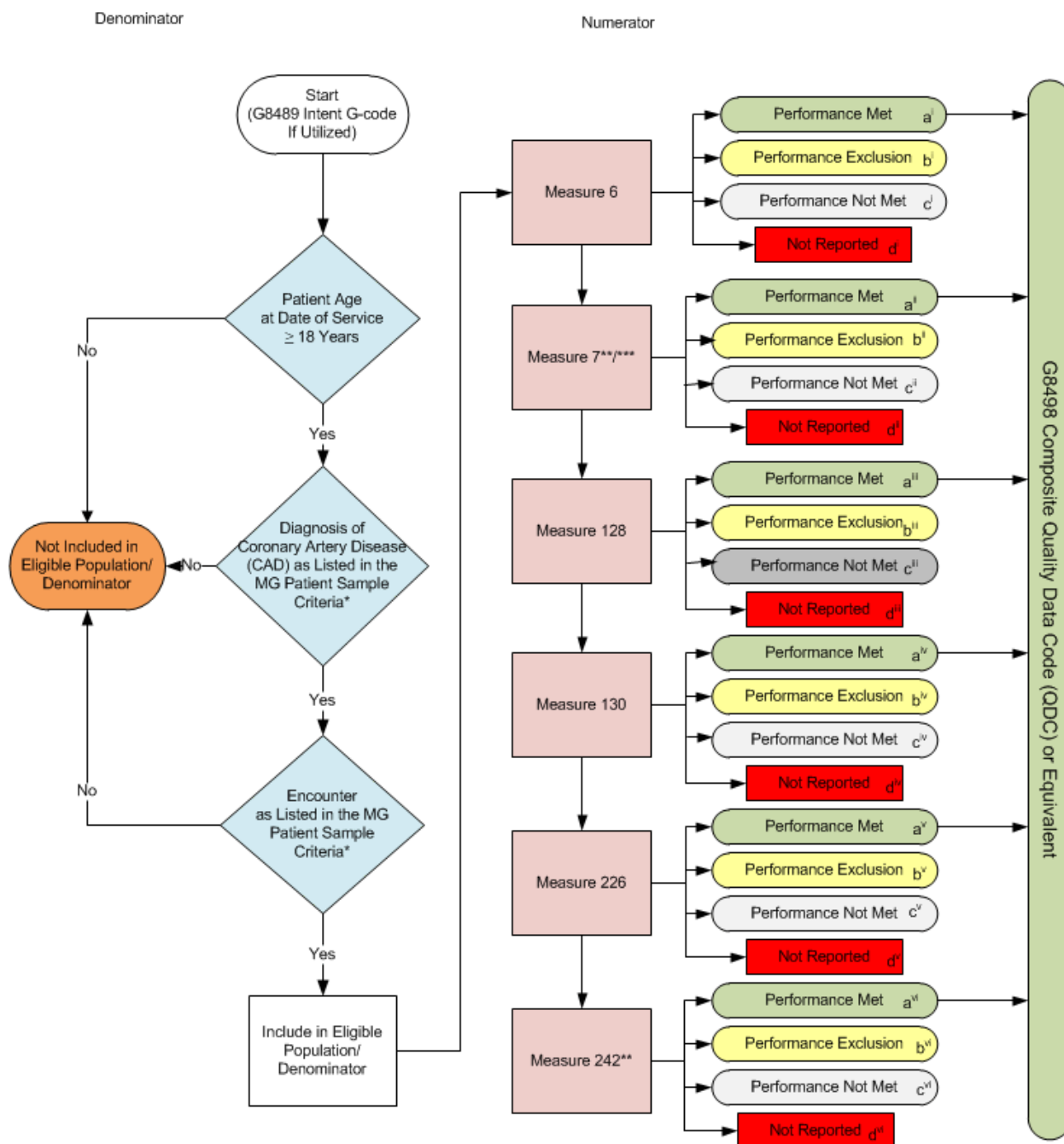


2015 Measures Group (MG) Flow Coronary Artery Disease (CAD)

Note: For Measure numerator details, please refer to the Measures Groups Specification Manual



* See the posted 2015 Measures Groups Specification Manual for Patient Sample Criteria, specific coding and instructions to report this measures group.

**Measures #7 and #242 are represented differently from the corresponding individual measure.

***Measure #7 is only applicable if the patient has a specific diagnosis of CAD and also has LVSD (left ventricular ejection fraction (LVEF) less than 40%).

2015 Measures Group (MG) Flow Coronary Artery Disease (CAD)

Scenarios for Reporting (Patient) and Performance (Measure) Algorithms:

a= Performance Met; b=Performance Exclusion; c=Performance Not Met; d=Not Reported; e=Not Applicable

	Measure 6 (i)	Measure 7**/**** (ii)	Measure 128 (iii)	Measure 130 (iv)	Measure 226 (v)	Measure 242** (vi)
Patient X LVSD and LVEF < 40%	Met (a ⁱ)	Met (a ⁱⁱ)	Met (a ⁱⁱⁱ)	Met (a ^{iv})	Met (a ^v)	Met (a ^{vi})
Patient Y w/o LVSD	Met (a ⁱ)	Not Applicable (e ⁱⁱ)	Not Met (c ⁱⁱⁱ)	Exclusion (b ^{iv})	Met (a ^v)	Met (a ^{vi})
Patient Z LVSD and LVEF < 40%	Met (a ⁱ)	Not Reported (d ⁱⁱ)	Met (a ⁱⁱⁱ)	Met (a ^{iv})	Met (a ^v)	Met (a ^{vi})

Reporting Algorithm****

Patient X [aⁱ,aⁱⁱ,aⁱⁱⁱ,a^{iv},a^v,a^{vi}] + Patient Y [aⁱ,eⁱⁱ,cⁱⁱⁱ,b^{iv},a^v,a^{vi}] + Patient Z [aⁱ,dⁱⁱ,aⁱⁱⁱ,a^{iv},a^v,a^{vi}] = 1+1+0 = 2 of the Required 20 Patient Sample Reported

Performance Algorithms

Measure 6

Performance Met (3) = 3 = 100.00%
Reported QDC for eligible patient (3) – Performance Exclusion (0) 3

Measure 7

Performance Met (1) = 1 = 100.00%
Reported QDC for eligible patient (1) – Performance Exclusion (0) 1

Measure 128

Performance Met (2) = 2 = 66.67%
Reported QDC for eligible patient (3) – Performance Exclusion (0) 3

Measure 130

Performance Met (2) = 2 = 100.00%
Reported QDC for eligible patient (3) – Performance Exclusion (1) 2

Measure 226

Performance Met (3) = 3 = 100.00%
Reported QDC for eligible patient (3) – Performance Exclusion (0) 3

Measure 242

Performance Met (3) = 3 = 100.00%
Reported QDC for eligible patient (3) – Performance Exclusion (0) 3

**Measures #7 and #242 are represented differently from the corresponding individual measure.

***Measure #7 is only applicable if the patient has a specific diagnosis of CAD and also has LVSD (left ventricular ejection fraction (LVEF) less than 40%).

****Reporting of all measures contained in measures group, per eligible patient, equals one.

2015 Measures Group (MG) Flow Coronary Artery Disease (CAD)

Please refer to the specific section of the 2015 PQRS Measures Groups Specifications Manual to identify specific coding and instructions to report the Coronary Artery Disease (CAD) Measures Group Patient Sample Criteria (denominator), individual measures, and numerator options information for use in reporting this Measures Group.

1. Start with G8489 Intent G-code if Utilized
2. Check Patient Age:
 - a. If the Age at Date of Service is greater than or equal to 18 years equals No, do not include in Eligible Population/Denominator. Stop Processing.
 - b. If the Age at Date of Service is greater than or equal to 18 years equals Yes, proceed to check Patient Diagnosis.
3. Check Patient Diagnosis:
 - a. If Diagnosis of Coronary Artery Disease (CAD) as Listed in the MG Patient Sample Criteria equals No, do not include in Eligible Population/Denominator. Stop Processing.
 - b. If Diagnosis of Coronary Artery Disease (CAD) as Listed in the MG Patient Sample Criteria equals Yes, proceed to check Encounter Performed.
4. Check Encounter Performed:
 - a. If Encounter as Listed in the MG Patient Sample Criteria equals No, do not include in Eligible Population. Stop Processing.
 - b. If Encounter as Listed in the MG Patient Sample Criteria equals Yes, include in the Eligible Population/Denominator.
5. Denominator Population
 - a. Include in Eligible Population/Denominator is all eligible patients who meet the Patient Sample Criteria (denominator) for the Measures Group. For each measure within the measures group each numerator option is represented by a letter which is used in the Scenarios for Reporting and Performance Algorithms at the end of this document.
6. Start Numerator Options within the Measures Group
7. Composite Quality Data Code (QDC) G8498 has been created for registries that utilize claims data. This QDC may be reported in lieu of individual QDCs when all quality clinical actions for all applicable measures within the group have been performed for this patient.
8. Measure 6
 - a. Numerator option Performance Met has an arrow pointing to G8498 Composite Quality Data Code (QDC) or Equivalent. Performance Met is represented by letter aⁱ.
 - b. Numerator option Performance Exclusion is represented by letter bⁱ.
 - c. Numerator option Performance Not Met is represented by letter cⁱ.
 - d. Numerator option Not Reported is represented by letter dⁱ.
9. Measure 7

- a. Measures #7 is represented differently from the corresponding individual measure. Measure #7 is only applicable if the patient has a specific diagnosis of CAD and also has LVSD (left ventricular ejection fraction (LVEF) less than 40%). When measure #7 is Not Applicable it is represented by letter eⁱⁱ in the Scenarios for Reporting Algorithms.
- b. Numerator option Performance Met has an arrow pointing to G8498 Composite Quality Data Code (QDC) or Equivalent. Performance Met is represented by letter aⁱⁱ.
- c. Numerator option Performance Exclusion is represented by letter bⁱⁱ.
- d. Numerator option Performance Not Met is represented by letter cⁱⁱ.
- e. Numerator option Not Reported is represented by letter dⁱⁱ.

10. Measure 128

- a. Numerator option Performance Met has an arrow pointing to G8498 Composite Quality Data Code (QDC) or Equivalent. Performance Met is represented by letter aⁱⁱⁱ.
- b. Numerator option Performance Exclusion is represented by letter bⁱⁱⁱ.
- c. Numerator option Performance Not Met is represented by letter cⁱⁱⁱ.
- d. Numerator option Not Reported is represented by letter dⁱⁱⁱ.

11. Measure 130

- a. Numerator option Performance Met has an arrow pointing to G8498 Composite Quality Data Code (QDC) or Equivalent. Performance Met is represented by letter a^{iv}.
- b. Numerator option Performance Exclusion is represented by letter b^{iv}.
- c. Numerator option Performance Not Met is represented by letter c^{iv}.
- d. Numerator option Not Reported is represented by letter d^{iv}.

12. Measure 226

- a. Numerator option Performance Met has an arrow pointing to G8498 Composite Quality Data Code (QDC) or Equivalent. Performance Met is represented by letter a^v.
- b. Numerator option Performance Exclusion is represented by letter b^v.
- c. Numerator option Performance Not Met is represented by letter c^v.
- d. Numerator option Not Reported is represented by letter d^v.

13. Measure 242

- a. Measures #242 is represented differently from the corresponding individual measure.
- b. Numerator option Performance Met has an arrow pointing to G8498 Composite Quality Data Code (QDC) or Equivalent. Performance Met is represented by letter a^{vi}.
- c. Numerator option Performance Exclusion is represented by letter b^{vi}.
- d. Numerator option Performance Not Met is represented by letter c^{vi}.
- e. Numerator option Not Reported is represented by letter d^{vi}.

14. Scenarios for Reporting and Performance Algorithms

15. Patient X has LVSD, LVEF less than 40%

- a. Patient X Met Measure 6 (represented by aⁱ)
- b. Patient X Met Measure 7 (represented by aⁱⁱ)
- c. Patient X Met Measure 128 (represented by aⁱⁱⁱ)

- d. Patient X Met Measure 130 (represented by a^{iv})
 - e. Patient X Met Measure 226 (represented by a^v)
 - f. Patient X Met Measure 242 (represented by a^{vi})
16. Patient Y without LVSD
- a. Patient Y Met Measure 6 (represented by aⁱ)
 - b. Patient Y Not Applicable for Measure 7 (represented by eⁱⁱ)
 - c. Patient Y Not Met but Reported Measure 128 (represented by cⁱⁱⁱ)
 - d. Patient Y Exclusion Reported for Measure 130 (represented by b^{iv})
 - e. Patient Y Met Measure 226 (represented by a^v)
 - f. Patient Y Met Measure 242 (represented by a^{vi})
17. Patient Z has LVSD, LVEF less than 40%
- a. Patient Z Met Measure 6 (represented by aⁱ)
 - b. Patient Z did Not Reported Measure 7 (represented by dⁱⁱ)
 - c. Patient Z Met Measure 128 (represented by aⁱⁱⁱ)
 - d. Patient Z Met Measure 130 (represented by a^{iv})
 - e. Patient Z Met Measure 226 (represented by a^v)
 - f. Patient Z Met Measure 242 (represented by a^{vi})
18. Reporting Algorithm
- a. Reporting of all applicable measures contained in the measures group, per eligible patient, equals one
 - b. Patient X Reporting equals 1 Plus Patient Y Reporting equals 1 Plus Patient Z Reporting equals 0 for a total of 2 of the Required 20 Patient Sample Reported
19. Performance Algorithms
20. Measure 6
- a. Performance Met equals 3 divided by Reported QDC for 3 eligible patients minus 0 Performance Exclusions equals 100% Performance Rate
21. Measure 7
- a. Performance Met equals 1 divided by Reported QDC for 1 eligible patient minus 0 Performance Exclusions equals 100% Performance Rate
22. Measure 128
- a. Performance Met equals 2 divided by Reported QDC for 3 eligible patients minus 0 Performance Exclusions equals 66.67% Performance Rate
23. Measure 130
- a. Performance Met equals 2 divided by Reported QDC for 3 eligible patients minus 1 Performance Exclusion equals 100% Performance Rate
24. Measure 226
- a. Performance Met equals 3 divided by Reported QDC for 3 eligible patients minus 0 Performance Exclusions equals 100% Performance Rate
25. Measure 242
- a. Performance Met equals 3 divided by Reported QDC for 3 eligible patients minus 0 Performance Exclusions equals 100% Performance Rate