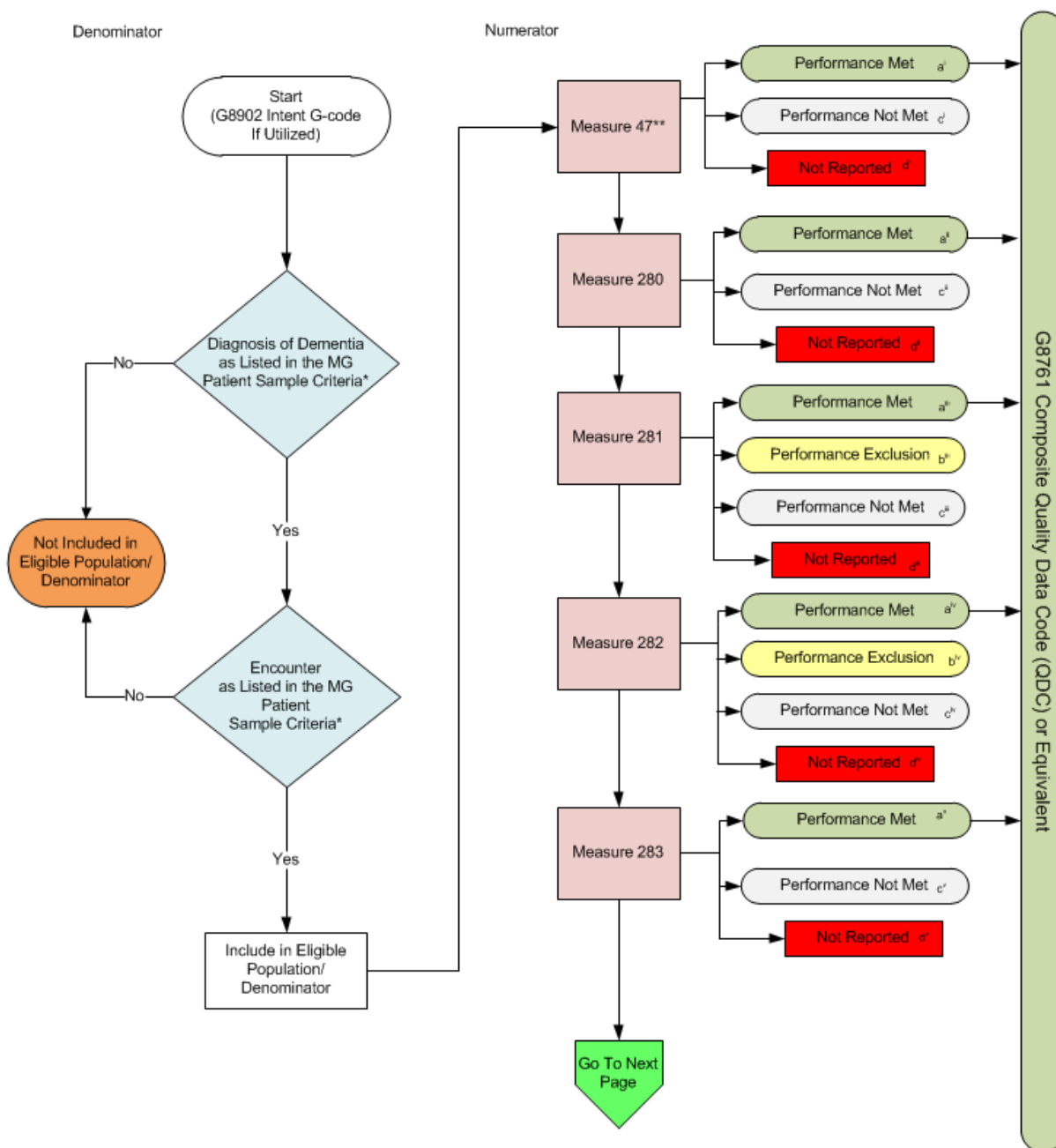


2015 Measures Group (MG) Flow Dementia

Note: For Measure numerator details, please refer to the Measures Groups Specification Manual

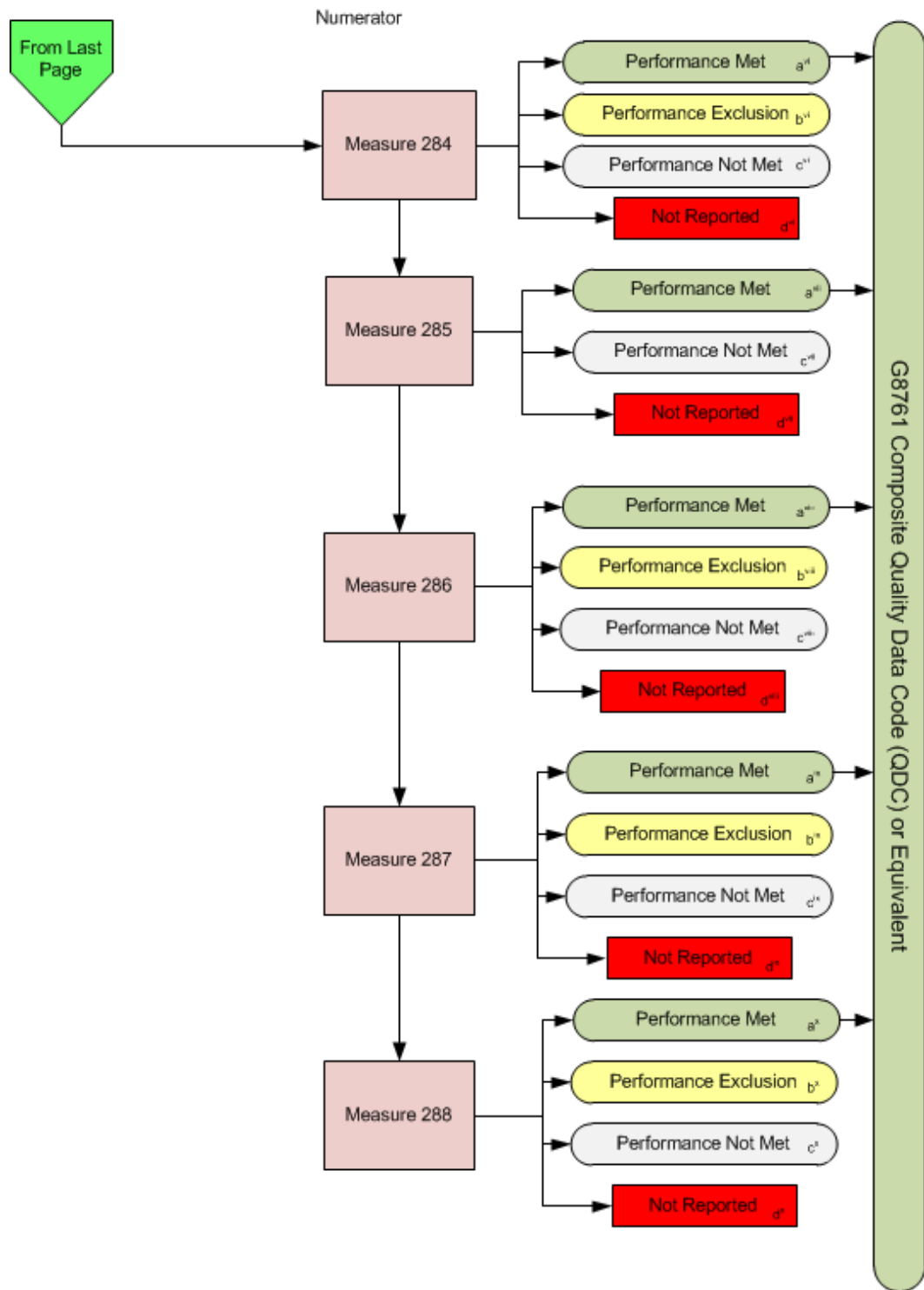


*See the posted 2015 Measures Groups Specification Manual for Patient Sample Criteria, specific coding and instructions to report this Measures Group.

**Measure #47 need only be reported on patients 65 years and older.

2015 Measures Group (MG) Flow Dementia

Note: For Measure numerator details, please refer to the Measures Groups Specification Manual



2015 Measures Group (MG) Flow Dementia

Scenarios for Reporting (Patient) and Performance (Measure) Algorithms:

a= Performance Met; b=Performance Exclusion; c=Performance Not Met; d=Not Reported; e=Not Applicable

| | <u>Measure 47**</u> (i) | <u>Measure 280</u> (ii) | <u>Measure 281</u> (iii) | <u>Measure 282</u> (iv) | <u>Measure 283</u> (v) | <u>Measure 284</u> (vi) |
|---------------------------|----------------------------|----------------------------|-----------------------------|---------------------------------|---------------------------|----------------------------|
| Patient X Age 50 years | Not Applicable (e) | Met (a ⁱ) | Exclusion (b ⁱ) | Met (a ^{iv}) | Not Met (c ^v) | Met (a ^{vi}) |
| Patient Y Age 65 years | Not Met (c ⁱ) | Not Met (c ⁱⁱ) | Met (a ⁱⁱⁱ) | Met (a ^{iv}) | Met (a ^v) | Not Met (c ^{vi}) |
| Patient Z Age 75 years | Met (a ⁱ) | Met (a ⁱⁱ) | Not Met (c ⁱⁱⁱ) | Not Reported (d ^{iv}) | Met (a ^v) | Met (a ^{vi}) |

| | <u>Measure 285</u> (vii) | <u>Measure 286</u> (viii) | <u>Measure 287</u> (ix) | <u>Measure 288</u> (x) |
|--------------------------|-----------------------------|------------------------------|------------------------------|-----------------------------|
| Patient X Age 50 yrs. | Met (a ^{vii}) | Met (a ^{viii}) | Exclusion (b ^{ix}) | Met (a ^x) |
| Patient Y Age 65 yrs. | Met (a ^{vii}) | Not Met (c ^{viii}) | Exclusion (b ^{ix}) | Not Met (c ^x) |
| Patient Z Age 75 yrs. | Met (a ^{vii}) | Met (a ^{viii}) | Met (a ^{ix}) | Exclusion (b ^x) |

Reporting Algorithm***

Patient X [eⁱ,aⁱⁱ,bⁱⁱⁱ,a^{iv},c^v,a^{vi},a^{vii},a^{viii},b^{ix},a^x] + Patient Y [cⁱ,cⁱⁱ,aⁱⁱⁱ,a^{iv},a^v,c^{vi},a^{vii},c^{viii},b^{ix},c^x] + Patient Z [aⁱ,aⁱⁱ,cⁱⁱⁱ,d^{iv},a^v,a^{vi},a^{vii},a^{viii},b^{ix},a^x] = 1+1+0 = 2 of the Required 20 Patient Sample Reported

Performance Algorithms

Measure 47

Performance Met (1) = 1 = 50.00%
Reported QDC for eligible patient (2) 2

Measure 280

Performance Met (2) = 2 = 66.67%
Reported QDC for eligible patient (3) 3

Measure 281

Performance Met (1) = 1 = 50.00%
Reported QDC for eligible patient (3) – Performance Exclusion (1) 2

Measure 282

Performance Met (2) = 2 = 100.00%
Reported QDC for eligible patient (2) – Performance Exclusion (0) 2

Measure 283

Performance Met (2) = 2 = 66.67%
Reported QDC for eligible patient (3) 3

Measure 284

Performance Met (2) = 2 = 66.67%
Reported QDC for eligible patient (3) – Performance Exclusion (0) 3

Measure 285

Performance Met (3) = 3 = 100.00%
Reported QDC for eligible patient (3) 3

Measure 286

Performance Met (2) = 2 = 66.67%
Reported QDC for eligible patient (3) – Performance Exclusion (0) 3

Measure 287

Performance Met (1) = 1 = 100.00%
Reported QDC for eligible patient (3) – Performance Exclusion (2) 1

Measure 288

Performance Met (1) = 1 = 50.00%
Reported QDC for eligible patient (3) – Performance Exclusion (1) 2

** Measure #47 only need be reported on patients 65 years and older.

***Reporting of all measures contained in measures group, per eligible patient, equals one.

2015 Measures Group (MG) Flow Dementia

Please refer to the specific section of the 2015 PQRS Measures Groups Specifications Manual to identify specific coding and instructions to report the Dementia Measures Group Patient Sample Criteria (denominator), individual measures, and numerator options information for use in reporting this Measures Group.

1. Start with G8902 Intent G-code if Utilized
2. Check Patient Diagnosis:
 - a. If Diagnosis of Dementia as Listed in the MG Patient Sample Criteria equals No, do not include in Eligible Population/Denominator. Stop Processing.
 - b. If Diagnosis of Dementia as Listed in the MG Patient Sample Criteria equals Yes, proceed to check Encounter Performed.
3. Check Encounter Performed:
 - a. If Encounter as Listed in the MG Patient Sample Criteria equals No, do not include in Eligible Population. Stop Processing.
 - b. If Encounter as Listed in the MG Patient Sample Criteria equals Yes, include in the Eligible Population/Denominator.
4. Denominator Population
 - a. Include in Eligible Population/Denominator is all eligible patients who meet the Patient Sample Criteria (denominator) for the Measures Group. For each measure within the measures group each numerator option is represented by a letter which is used in the Scenarios for Reporting and Performance Algorithms at the end of this document.
5. Start Numerator Options for Measures within the Measures Group
6. Composite Quality Data Code (QDC) G8761 has been created for registries that utilize claims data. This QDC may be reported in lieu of individual QDCs when all quality clinical actions for all applicable measures within the group have been performed for this patient.
7. Measure 47
 - a. Measure #47 only need be reported on patients 65 years and older. When measure #47 is Not Applicable it is represented by letter eⁱ in the Scenarios for Reporting Algorithms.
 - b. Numerator option Performance Met has an arrow pointing to G8761 Composite Quality Data Code (QDC) or Equivalent. Performance Met is represented by letter aⁱ.
 - c. Numerator option Performance Not Met is represented by letter cⁱ.
 - d. Numerator option Not Reported is represented by letter dⁱ.
8. Measure 280
 - a. Numerator option Performance Met has an arrow pointing to G8761 Composite Quality Data Code (QDC) or Equivalent. Performance Met is represented by letter aⁱⁱ.
 - b. Numerator option Performance Not Met is represented by letter cⁱⁱ.
 - c. Numerator option Not Reported is represented by letter dⁱⁱ.

9. Measure 281

- a. Numerator option Performance Met has an arrow pointing to G8761 Composite Quality Data Code (QDC) or Equivalent. Performance Met is represented by letter aⁱⁱⁱ.
- b. Numerator option Performance Exclusion is represented by letter bⁱⁱⁱ.
- c. Numerator option Performance Not Met is represented by letter cⁱⁱⁱ.
- d. Numerator option Not Reported is represented by letter dⁱⁱⁱ.

10. Measure 282

- a. Numerator option Performance Met has an arrow pointing to G8761 Composite Quality Data Code (QDC) or Equivalent. Performance Met is represented by letter a^{iv}.
- b. Numerator option Performance Exclusion is represented by letter b^{iv}.
- c. Numerator option Performance Not Met is represented by letter c^{iv}.
- d. Numerator option Not Reported is represented by letter d^{iv}.

11. Measure 283

- a. Numerator option Performance Met has an arrow pointing to G8761 Composite Quality Data Code (QDC) or Equivalent. Performance Met is represented by letter a^v.
- b. Numerator option Performance Not Met is represented by letter c^v.
- c. Numerator option Not Reported is represented by letter d^v.

12. Measure 284

- a. Numerator option Performance Met has an arrow pointing to G8761 Composite Quality Data Code (QDC) or Equivalent. Performance Met is represented by letter a^{vi}.
- b. Numerator option Performance Exclusion is represented by letter b^{vi}.
- c. Numerator option Performance Not Met is represented by letter c^{vi}.
- d. Numerator option Not Reported is represented by letter d^{vi}.

13. Measure 285

- a. Numerator option Performance Met has an arrow pointing to G8761 Composite Quality Data Code (QDC) or Equivalent. Performance Met is represented by letter a^{vii}.
- b. Numerator option Performance Not Met is represented by letter c^{vii}.
- c. Numerator option Not Reported is represented by letter d^{vii}.

14. Measure 286

- a. Numerator option Performance Met has an arrow pointing to G8761 Composite Quality Data Code (QDC) or Equivalent. Performance Met is represented by letter a^{viii}.
- b. Numerator option Performance Exclusion is represented by letter b^{viii}.
- c. Numerator option Performance Not Met is represented by letter c^{viii}.
- d. Numerator option Not Reported is represented by letter d^{viii}.

15. Measure 287

- a. Numerator option Performance Met has an arrow pointing to G8761 Composite Quality Data Code (QDC) or Equivalent. Performance Met is represented by letter a^{ix}.
- b. Numerator option Performance Exclusion is represented by letter b^{ix}.
- c. Numerator option Performance Not Met is represented by letter c^{ix}.

- d. Numerator option Not Reported is represented by letter d^{ix}.

16. Measure 288

- a. Numerator option Performance Met has an arrow pointing to G8761 Composite Quality Data Code (QDC) or Equivalent. Performance Met is represented by letter a^x.
- b. Numerator option Performance Exclusion is represented by letter b^x.
- c. Numerator option Performance Not Met is represented by letter c^x.
- d. Numerator option Not Reported is represented by letter d^x.

17. Scenarios for Reporting and Performance Algorithms

18. Patient X Age 50 Years

- a. Patient X Not Applicable for Measure 47 (represented by eⁱ)
- b. Patient X Met Measure 280 (represented by aⁱⁱ)
- c. Patient X Exclusion Reported for Measure 281 (represented by bⁱⁱⁱ)
- d. Patient X Met Measure 282 (represented by a^{iv})
- e. Patient X Not Met but Reported Measure 283 (represented by c^v)
- f. Patient X Met Measure 284 (represented by a^{vi})
- g. Patient X Met Measure 285 (represented by a^{vii})
- h. Patient X Met Measure 286 (represented by a^{viii})
- i. Patient X Exclusion Reported for Measure 287 (represented by b^{ix})
- j. Patient X Met Measure 288 (represented by a^x)

19. Patient Y Age 65 Years

- a. Patient Y Not Met but Reported Measure 47 (represented by cⁱ)
- b. Patient Y Not Met but Reported Measure 280 (represented by cⁱⁱ)
- c. Patient Y Met Measure 281 (represented by aⁱⁱⁱ)
- d. Patient Y Met Measure 282 (represented by a^{iv})
- e. Patient Y Met Measure 283 (represented by a^v)
- f. Patient Y Not Met but Reported Measure 284 (represented by c^{vi})
- g. Patient Y Met Measure 285 (represented by a^{vii})
- h. Patient Y Not Met but Reported Measure 286 (represented by c^{viii})
- i. Patient Y Exclusion Reported for Measure 287 (represented by b^{ix})
- j. Patient Y Not Met but Reported Measure 288 (represented by c^x)

20. Patient Z Age 75 Years

- a. Patient Z Met Measure 47 (represented by aⁱ)
- b. Patient Z Met Measure 280 (represented by aⁱⁱ)
- c. Patient Z Not Met but Reported Measure 281 (represented by cⁱⁱⁱ)
- d. Patient Z did Not Report Measure 282 (represented by d^{iv})
- e. Patient Z Met Measure 283 (represented by a^v)
- f. Patient Z Met Measure 284 (represented by a^{vi})
- g. Patient Z Met Measure 285 (represented by a^{vii})
- h. Patient Z Met Measure 286 (represented by a^{viii})
- i. Patient Z Met Measure 287 (represented by a^{ix})
- j. Patient Z Exclusion Reported for Measure 288 (represented by b^x)

21. Reporting Algorithm

- a. Reporting of all applicable measures contained in the measures group, per eligible patient, equals one

- b. Patient X Reporting equals 1 Plus Patient Y Reporting equals 1 Plus Patient Z Reporting equals 0 for a total of 2 of the Required 20 Patient Sample Reported

22. Performance Algorithms

23. Measure 47

- a. Performance Met equals 1 divided by Reported QDC for 2 eligible patients equals 50% Performance Rate

24. Measure 280

- a. Performance Met equals 2 divided by Reported QDC for 3 eligible patients equals 66.67% Performance Rate

25. Measure 281

- a. Performance Met equals 1 divided by Reported QDC for 3 eligible patients minus 1 Performance Exclusion equals 50.00% Performance Rate

26. Measure 282

- a. Performance Met equals 2 divided by Reported QDC for 2 eligible patients minus 0 Performance Exclusions equals 100% Performance Rate

27. Measure 283

- a. Performance Met equals 2 divided by Reported QDC for 3 eligible patients equals 66.67% Performance Rate

28. Measure 284

- a. Performance Met equals 2 divided by Reported QDC for 3 eligible patients minus 0 Performance Exclusions equals 66.67% Performance Rate

29. Measure 285

- a. Performance Met equals 3 divided by Reported QDC for 3 eligible patients equals 100.00% Performance Rate

30. Measure 286

- a. Performance Met equals 2 divided by Reported QDC for 3 eligible patients minus 0 Performance Exclusions equals 66.67% Performance Rate

31. Measure 287

- a. Performance Met equals 1 divided by Reported QDC for 3 eligible patients minus 2 Performance Exclusions equals 100.00% Performance Rate

32. Measure 288

- a. Performance Met equals 1 divided by Reported QDC for 3 eligible patients minus 1 Performance Exclusion equals 50.00% Performance Rate