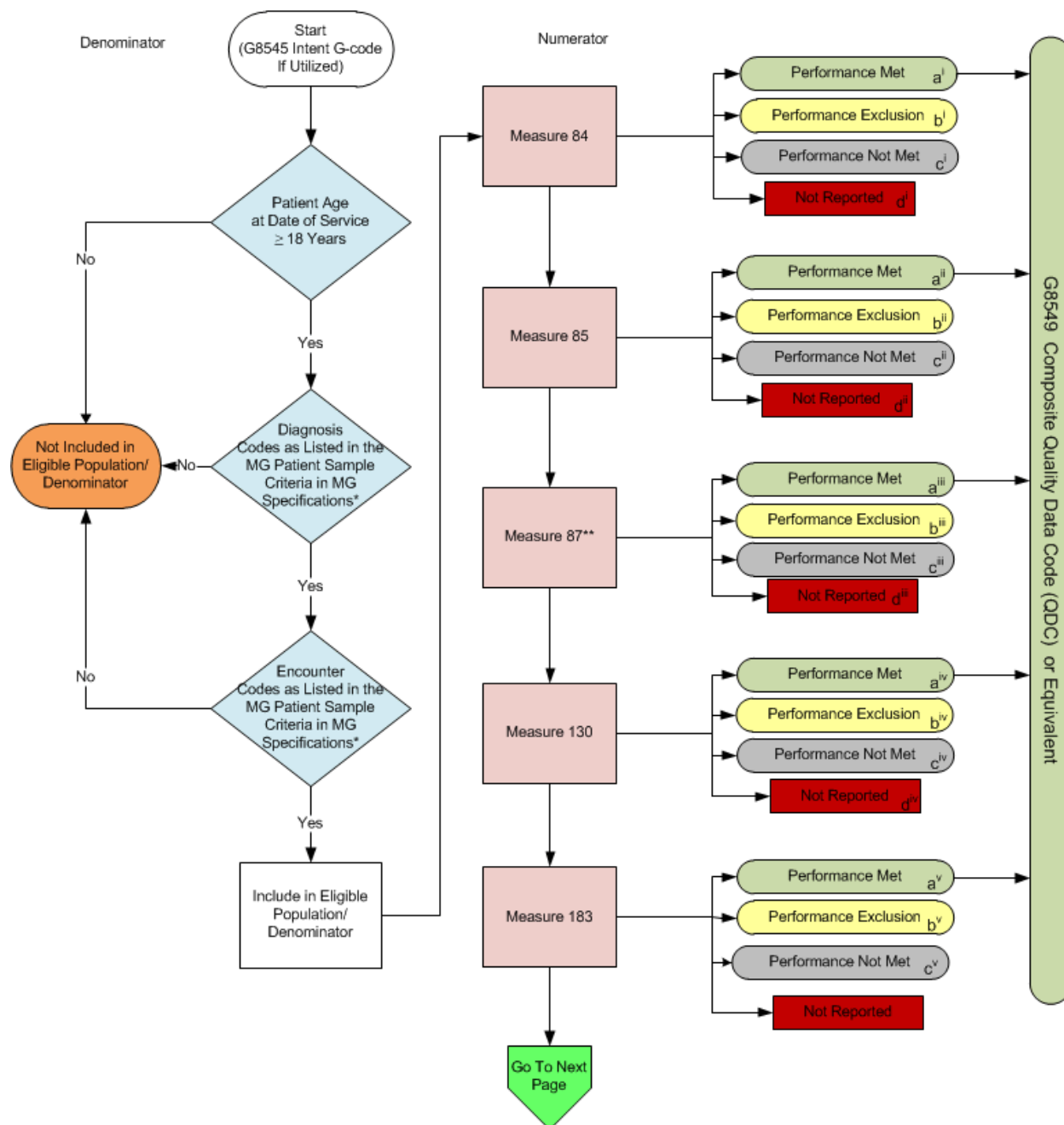


2015 Measures Group (MG) Flow Hepatitis C

Note: For Measure numerator details, please refer to the Measures Groups Specification Manual

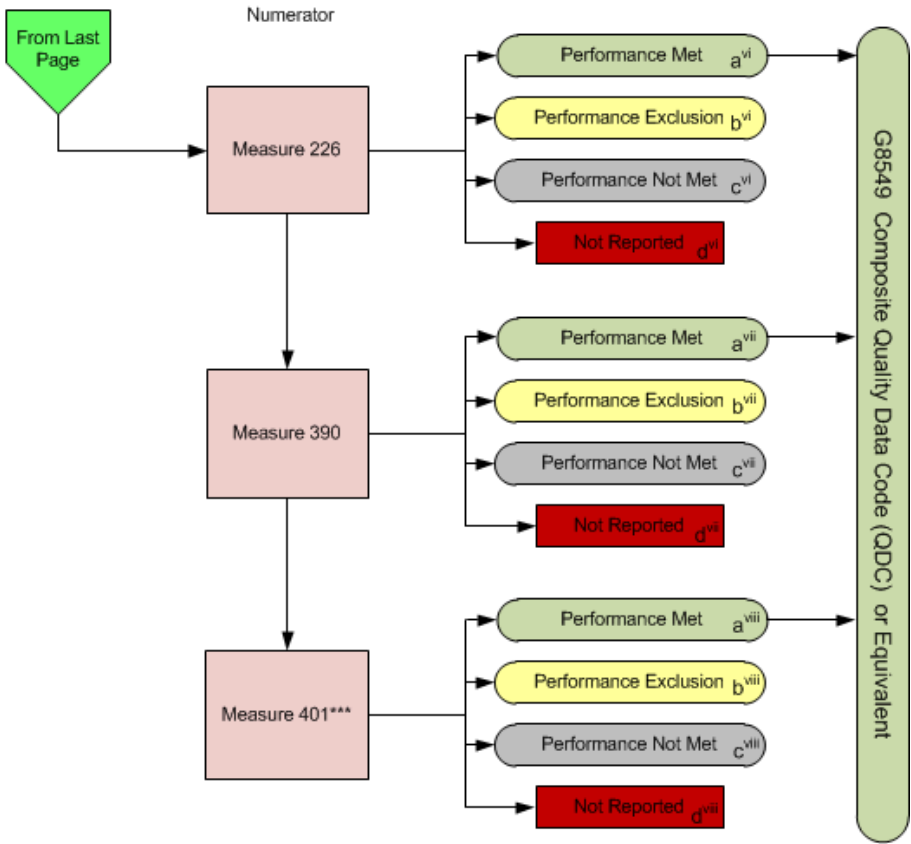


*See the posted 2015 Measures Groups Specification Manual for Patient Sample Criteria, specific coding and instructions to report this measures group.

**Measure #87 only needs to be reported if initiation of antiviral treatment took place before October of the measurement year (12 weeks before the end of the measurement period)

2015 Measures Group (MG) Flow Hepatitis C

Note: For Measure numerator details, please refer to the Measures Groups Specification Manual



***Measure #401 only needs to be reported when the patient also has a diagnosis of cirrhosis. See the 2015 Measures Groups Specification Manual for specific diagnosis codes indicating cirrhosis.

2015 Measures Group (MG) Flow Hepatitis C

Scenarios for Reporting (Patient) and Performance (Measure) Algorithms:

a= Performance Met; b=Performance Exclusion; c=Performance Not Met; d=Not Reported; e=Not Applicable

	Measure 84 (i)	Measure 85 (ii)	Measure 87** (iii)	Measure 130 (iv)	Measure 183 (v)	Measure 226 (vi)	Measure 390 (vii)	Measure 401*** (viii)
Patient X With Diagnosis (Dx) of Cirrhosis, Antiviral Txment Initiated 1/31/2015	Met (a ⁱ)	Met (a ⁱⁱ)	Met (a ⁱⁱⁱ)	Met (a ^{iv})	Met (a ^v)	Met (a ^{vi})	Met (a ^{vii})	Met (a ^{viii})
Patient Y Without Dx of Cirrhosis, Antiviral Txment Initiated 6/24/015	Met (a ⁱ)	Not Met (c ⁱⁱ)	Met (a ⁱⁱⁱ)	Met (a ^{iv})	Met (a ^v)	Exclusion (b ^{vi})	Met (a ^{vii})	Not Applicable (e ^{viii})
Patient Z With Dx of Cirrhosis, Antiviral Txment Initiated 11/13/2015	Met (a ⁱ)	Not Met (c ⁱⁱ)	Not Applicable (e ⁱⁱⁱ)	Not Reported (d ^{iv})	Met (a ^v)	Met (a ^{vi})	Met (a ^{vii})	Exclusion (b ^{viii})

Reporting Algorithm****

Patient X [aⁱ,aⁱⁱ,aⁱⁱⁱ,a^{iv},a^v,a^{vi},a^{vii}] + Patient Y [aⁱ,cⁱⁱ,aⁱⁱⁱ,a^{iv},a^v,b^{vi},a^{vii},e^{viii}] + Patient Z [aⁱ,cⁱⁱ,eⁱⁱⁱ,d^{iv},a^v,a^{vi},a^{vii},b^{viii}] = 1+1+0 = 2 of the Required 20 Patient Sample Reported

Performance Algorithms

Measure 84

Performance Met (3) = $\frac{3}{3} = 100.00\%$
Reported QDC for eligible patient (3) – Performance Exclusion (0)

Measure 85

Performance Met (1) = $\frac{1}{3} = 33.33\%$
Reported QDC for eligible patient (3) – Performance Exclusion (0)

Measure 87

Performance Met (2) = $\frac{2}{2} = 100.00\%$
Reported QDC for eligible patient (2) – Performance Exclusion (0)

Measure 130

Performance Met (2) = $\frac{2}{2} = 100.00\%$
Reported QDC for eligible patient (2) – Performance Exclusion (0)

Measure 183

Performance Met (3) = $\frac{3}{3} = 100.00\%$
Reported QDC for eligible patient (3) – Performance Exclusion (0)

Measure 226

Performance Met (2) = $\frac{2}{2} = 100.00\%$
Reported QDC for eligible patient (3) – Performance Exclusion (1)

Measure 390

Performance Met (3) = $\frac{3}{3} = 100.00\%$
Reported QDC for eligible patient (3) – Performance Exclusion (0)

Measure 401

Performance Met (1) = $\frac{1}{1} = 100.00\%$
Reported QDC for eligible patient (2) – Performance Exclusion (1)

**Measure #87 only needs to be reported if initiation of antiviral treatment took place before October of the measurement year (12 weeks before the end of the measurement period)

***Measure #401 only needs to be reported when the patient also has the cirrhosis. See the Measures Groups Specification Manual for specific diagnosis codes indicating cirrhosis.

****Reporting of all applicable measures contained in measures group, per patient, equals one.

2015 Measures Group (MG) Flow Hepatitis C

Please refer to the specific section of the 2015 PQRS Measures Groups Specifications Manual to identify the specific coding and instructions to report the Hepatitis C Measures Group Patient Sample Criteria (denominator), individual measures, and numerator options information for use in reporting this Measures Group.

1. Start with G8545 Intent G-code if Utilized
2. Check Patient Age:
 - a. If the Age is greater than or equal to 18 years of age at Date of Service equals No, do not include in Eligible Population/Denominator. Stop Processing.
 - b. If the Age is greater than or equal to 18 years of age at Date of Service equals Yes, proceed to check Patient Diagnosis.
3. Check Patient Diagnosis:
 - a. If Diagnosis indicating Hepatitis C as listed in the Measures Group Patient Sample Criteria equals No, do not include in Eligible Population/Denominator. Stop Processing.
 - b. If Diagnosis indicating Hepatitis C as listed in the Measures Group Patient Sample Criteria equals Yes, proceed to check Encounter Performed.
4. Check Encounter Performed:
 - a. If Encounter as Listed in the Measures Group Patient Sample Criteria equals No, do not include in Eligible Population/Denominator. Stop Processing.
 - b. If Encounter as Listed in the Measures Group Patient Sample Criteria equals Yes, include in the Eligible Population/Denominator.
5. Denominator Population
 - a. Include in Eligible Population/Denominator all eligible patients who meet the Patient Sample Criteria (denominator) for the Measures Group. For each measure within the measures group each numerator option is represented by a letter which is used in the Scenarios for Reporting and Performance Algorithms at the end of this document.
6. Start Numerator Options for Measures within the Measures Group
7. Composite Quality Data Code (QDC) G8549 has been created for registries that utilize claims data. This QDC may be reported in lieu of individual QDCs when all quality clinical actions for all applicable measures within the group have been performed for this patient.
8. Measure 84
 - a. Numerator option Performance Met has an arrow pointing to G8549 Composite G-Code or Equivalent. Performance Met is represented by letter aⁱ.
 - b. Numerator option Performance Exclusion is represented by letter bⁱ.
 - c. Numerator option Performance Not Met is represented by letter cⁱ.
 - d. Numerator option Not Reported is represented by letter dⁱ.
9. Measure 85
 - a. Numerator option Performance Met has an arrow pointing to G8549 Composite G-Code or Equivalent. Performance Met is represented by letter aⁱⁱ.

- b. Numerator option Performance Exclusion is represented by letter bⁱⁱ.
- c. Numerator option Performance Not Met is represented by letter cⁱⁱ.
- d. Numerator option Not Reported is represented by letter dⁱⁱ.

10. Measure 87

- a. Measure #87 need only be reported if initiation of antiviral treatment took place before October of the measurement year (12 weeks before the end of the measurement period). When measure #87 is Not Applicable it is represented by letter eⁱⁱⁱ in the Scenarios for Reporting Algorithms.
- b. Numerator option Performance Met has an arrow pointing to G8549 Composite G-Code or Equivalent. Performance Met is represented by letter aⁱⁱⁱ.
- c. Numerator option Performance Exclusion is represented by letter bⁱⁱⁱ.
- d. Numerator option Performance Not Met is represented by letter cⁱⁱⁱ.
- e. Numerator option Not Reported is represented by letter dⁱⁱⁱ.

11. Measure 130

- a. Numerator option Performance Met has an arrow pointing to G8549 Composite G-Code or Equivalent. Performance Met is represented by letter a^{iv}.
- b. Numerator option Performance Exclusion is represented by letter b^{iv}.
- c. Numerator option Performance Not Met is represented by letter c^{iv}.
- d. Numerator option Not Reported is represented by letter d^{iv}.

12. Measure 183

- a. Numerator option Performance Met has an arrow pointing to G8549 Composite G-Code or Equivalent. Performance Met is represented by letter a^v.
- b. Numerator option Performance Exclusion is represented by letter b^v.
- c. Numerator option Performance Not Met is represented by letter c^v.
- d. Numerator option Not Reported is represented by letter d^v.

13. Measure 226

- a. Numerator option Performance Met has an arrow pointing to G8549 Composite G-Code or Equivalent. Performance Met is represented by letter a^{vi}.
- b. Numerator option Performance Exclusion is represented by letter b^{vi}.
- c. Numerator option Performance Not Met is represented by letter c^{vi}.
- d. Numerator option Not Reported is represented by letter d^{vi}.

14. Measure 390

- a. Numerator option Performance Met has an arrow pointing to G8549 Composite G-Code or Equivalent. Performance Met is represented by letter a^{vii}.
- b. Numerator option Performance Exclusion is represented by letter b^{vii}.
- c. Numerator option Performance Not Met is represented by letter c^{vii}.
- d. Numerator option Not Reported is represented by letter d^{vii}.

15. Measure 401

- a. Measure #401 need only be reported when the patient is also diagnosed with cirrhosis. See the Measures Groups Specification Manual for specific diagnosis codes indicating cirrhosis. When measure #401 is Not Applicable it is represented by letter e^{viii} in the Scenarios for Reporting Algorithms.
- b. Numerator option Performance Met has an arrow pointing to G8549 Composite G-Code or Equivalent. Performance Met is represented by letter a^{viii}.
- c. Numerator option Performance Exclusion is represented by letter b^{viii}.
- d. Numerator option Performance Not Met is represented by letter c^{viii}.

- e. Numerator option Not Reported is represented by letter d^{viii}.

16. Scenarios for Reporting and Performance Algorithms

17. Patient X With Diagnosis of Cirrhosis, Antiviral Treatment Initiated on 1/31/2015

- a. Patient X Met Measure 84 (represented by aⁱ)
- b. Patient X Met Measure 85 (represented by aⁱⁱ)
- c. Patient X Met Measure 87 (represented by aⁱⁱⁱ)
- d. Patient X Met Measure 130 (represented by a^{iv})
- e. Patient X Met Measure 183 (represented by a^v)
- f. Patient X Met Measure 226 (represented by a^{vi})
- g. Patient X Met Measure 390 (represented by a^{vii})
- h. Patient X Met Measure 401 (represented by a^{viii})

18. Patient Y Without Diagnosis of Cirrhosis, Antiviral Treatment Initiated on Visit 6/24/2015

- a. Patient Y Met Measure 84 (represented by aⁱ)
- b. Patient Y Not Met but Reported Measure 85 (represented by cⁱⁱ)
- c. Patient Y Met Measure 87 (represented by aⁱⁱⁱ)
- d. Patient Y Met Measure 130 (represented by a^{iv})
- e. Patient Y Met Measure 183 (represented by a^v)
- f. Patient Y Exclusion Reported for Measure 226 (represented by b^{vi})
- g. Patient Y Met Measure 390 (represented by a^{vii})
- h. Patient Y Not Applicable for Measure 401 (represented by e^{viii})

19. Patient Z With Diagnosis of Cirrhosis, Antiviral Treatment Initiated on 11/15/2015

- a. Patient Z Met Measure 84 (represented by aⁱ)
- b. Patient Z Not Met but Reported Measure 85 (represented by cⁱⁱ)
- c. Patient Z Not Applicable for Measure 87 (represented by eⁱⁱⁱ)
- d. Patient Z did Not Report Measure 130 (represented by d^{iv})
- e. Patient Z Met Measure 183 (represented by a^v)
- f. Patient Z Met Measure 226 (represented by a^{vi})
- g. Patient Z Met Measure 390 (represented by a^{vii})
- h. Patient Z Exclusion Reported for Met Measure 401 (represented by b^{viii})

20. Reporting Algorithm

- a. Reporting of all applicable measures contained in the measures group, per eligible patient, equals one
- b. Patient X Reporting equals 1 Plus Patient Y Reporting equals 1 Plus Patient Z Reporting equals 0 for a total of the 2 Required 20 Patient Sample Reported

21. Performance Algorithms

22. Measure 84

- a. Performance Met equals 3 divided by Reported QDC for 3 eligible patients minus 0 Performance Exclusions equals 100% Performance Rate

23. Measure 85

- a. Performance Met equals 1 divided by Reported QDC for 3 eligible patients minus 0 Performance Exclusions equals 33.33% Performance Rate

24. Measure 87

- a. Performance Met equals 2 divided by Reported QDC for 2 eligible patients minus 0 Performance Exclusions equals 100% Performance Rate
25. Measure 130
- a. Performance Met equals 2 divided by Reported QDC for 2 eligible patients minus 0 Performance Exclusions equals 100% Performance Rate
26. Measure 183
- a. Performance Met equals 3 divided by Reported QDC for 3 eligible patients minus 0 Performance Exclusions equals 100% Performance Rate
27. Measure 226
- a. Performance Met equals 2 divided by Reported QDC for 3 eligible patients minus 1 Performance Exclusion equals 100% Performance Rate
28. Measure 390
- a. Performance Met equals 3 divided by Reported QDC for 3 eligible patients minus 0 Performance Exclusions equals 100% Performance Rate
29. Measure 401
- Performance Met equals 1 divided by Reported QDC for 2 eligible patients minus 1 Performance Exclusion equals 100% Performance Rate