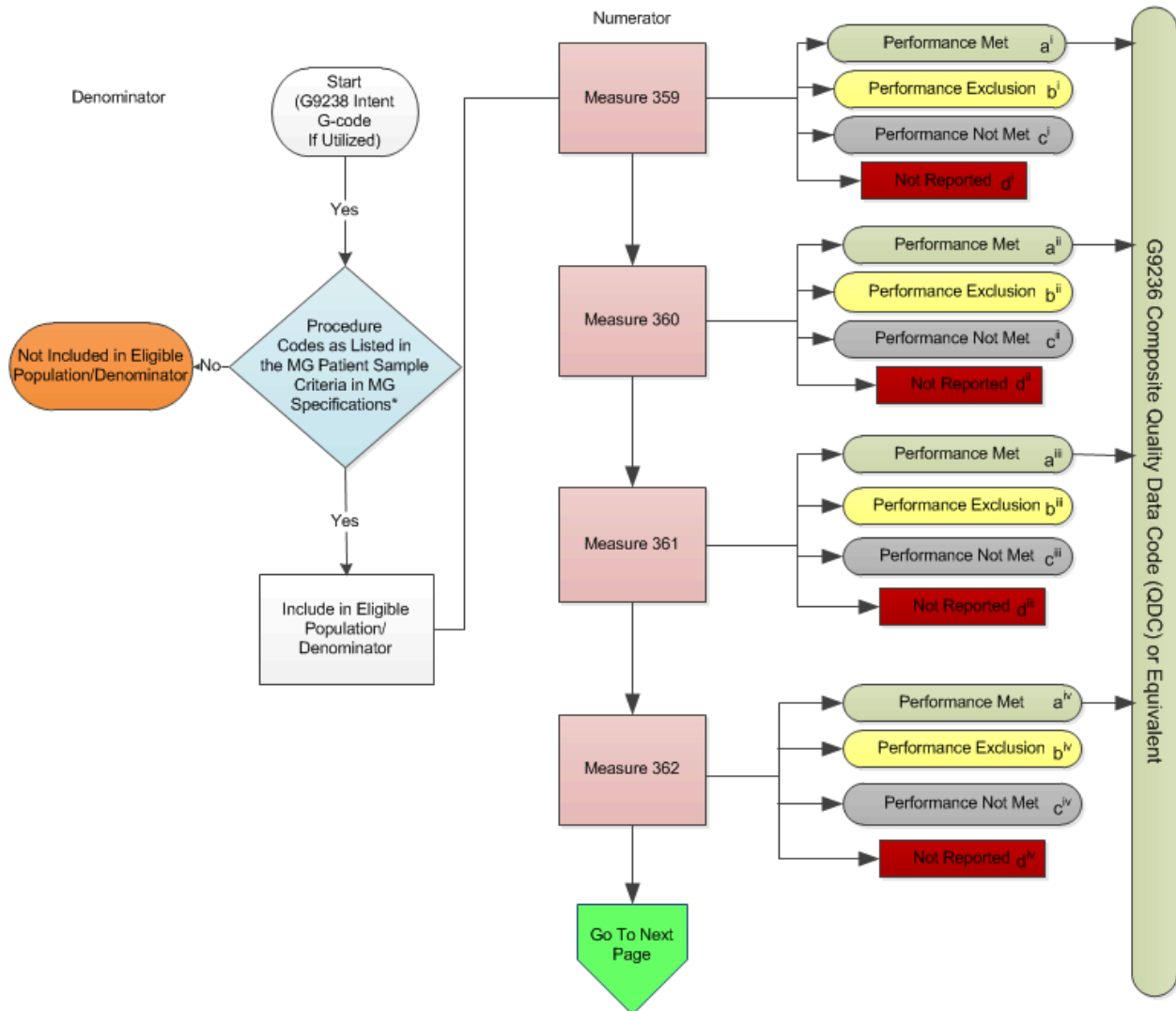


# 2015 Measures Group (MG) Flow Optimizing Patient Exposure to Ionizing Radiation (OPEIR)

Note: For Measure numerator details, please refer to the Measures Groups Specification Manual

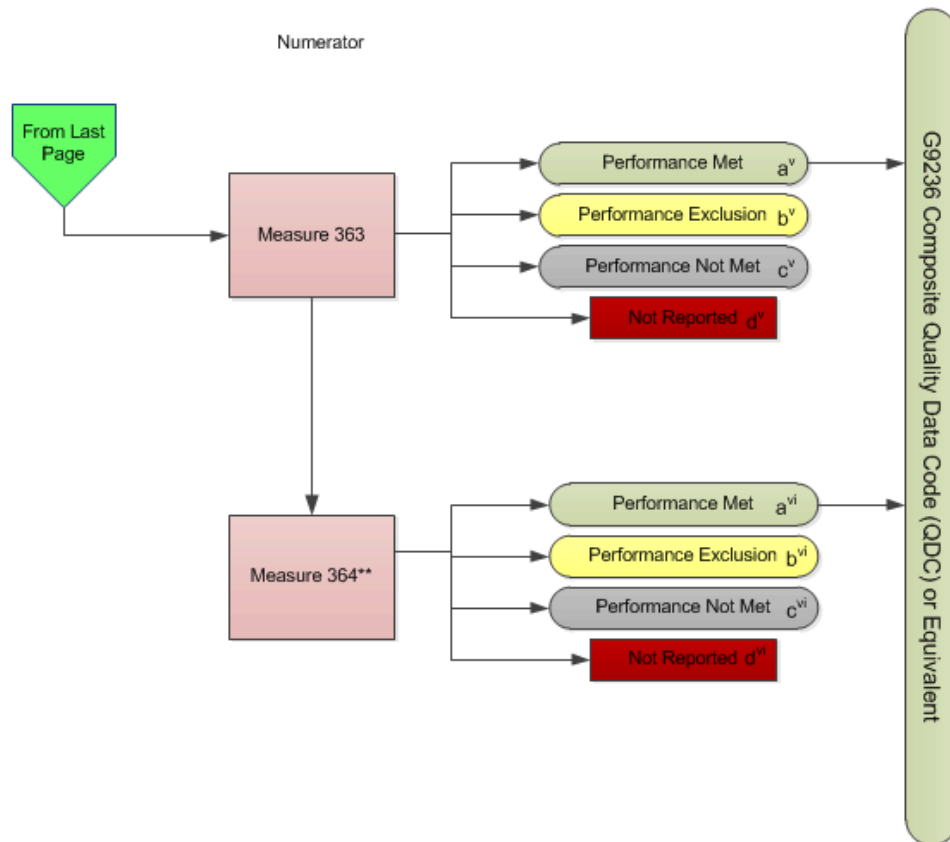


\* See the posted 2015 Measures Groups Specification Manual for Patient Sample Criteria, specific coding and instructions to report this measures group.

# 2015 Measures Group (MG) Flow

## Optimizing Patient Exposure to Ionizing Radiation (OPEIR)

Note: For Measure numerator details, please refer to the Measures Groups Specification Manual



\*\*Measure #364 is only applicable when the patient is 18 years of age or older and has a specific procedure performed (see measures group overview for specific coding) accompanied by a finding of an incidental pulmonary nodule.

## 2015 Measures Group (MG) Flow Optimizing Patient Exposure to Ionizing Radiation (OPEIR)

### Scenarios for Reporting (Patient) and Performance (Measure) Algorithms:

a= Performance Met; b=Performance Exclusion; c=Performance Not Met; d=Not Reported; e=Not Applicable

	<u>Measure 359</u>	<u>Measure 360</u>	<u>Measure 361</u>	<u>Measure 362</u>	<u>Measure 363</u>	<u>Measure 364**</u>
	(i)	(ii)	(iii)	(iv)	(v)	(vi)
Patient X Age 65 Finding of incidental pulmonary nodule	Met (a <sup>i</sup> )	Met (a <sup>i</sup> )	Exclusion (b <sup>ii</sup> )	Met (a <sup>v</sup> )	Not Met (c <sup>v</sup> )	Met (a <sup>vi</sup> )
Patient Y Age 17 Finding of incidental pulmonary nodule	Not Met (c <sup>i</sup> )	Not Met (c <sup>i</sup> )	Met (a <sup>ii</sup> )	Met (a <sup>v</sup> )	Met (a <sup>v</sup> )	Not Applicable (e <sup>vi</sup> )
Patient Z Age 70 No Finding of incidental pulmonary nodule	Met (a <sup>i</sup> )	Met (a <sup>i</sup> )	Not Met (c <sup>i</sup> )	Not Reported (d <sup>iv</sup> )	Met (a <sup>v</sup> )	Not Applicable (e <sup>vi</sup> )

### Reporting Algorithm\*\*\*

Patient X [a<sup>i</sup>,a<sup>ii</sup>,b<sup>ii</sup>,a<sup>iv</sup>,c<sup>v</sup>,a<sup>vi</sup>] + Patient Y [c<sup>i</sup>,c<sup>ii</sup>,a<sup>ii</sup>,a<sup>iv</sup>,a<sup>v</sup>,e<sup>vi</sup>] + Patient Z [a<sup>i</sup>,a<sup>ii</sup>,c<sup>ii</sup>,d<sup>iv</sup>,a<sup>v</sup>,e<sup>vi</sup>] = 1+1+0 = 2 of the Required 20 Patient Sample Reported

### Performance Algorithms

#### Measure 359

Performance Met (2) =  $\frac{2}{3}$  = 66.67%  
Reported QDC for eligible patient (3) - Performance Exclusion (0)

#### Measure 360

Performance Met (2) =  $\frac{2}{3}$  = 66.67%  
Reported QDC for eligible patient (3) - Performance Exclusion (0)

#### Measure 361

Performance Met (1) =  $\frac{1}{2}$  = 50.00%  
Reported QDC for eligible patient (3) - Performance Exclusion (1)

#### Measure 362

Performance Met (2) =  $\frac{2}{2}$  = 100.00%  
Reported QDC for eligible patient (2) - Performance Exclusion (0)

#### Measure 363

Performance Met (2) =  $\frac{2}{3}$  = 66.67%  
Reported QDC for eligible patient (3) - Performance Exclusion (0)

#### Measure 364

Performance Met (1) =  $\frac{1}{1}$  = 100.00%  
Reported QDC for eligible patient (1) - Performance Exclusion (0)

\*\*Measure #364 is only applicable when the patient is 18 years of age or older and has a specific procedure performed (see measures group overview for specific coding) accompanied by a finding of an incidental pulmonary nodule.

\*\*\*Reporting of all applicable measures contained in measures group, per eligible patient, equals one.

## **2015 Measures Group (MG) Flow**

### **Optimizing Patient Exposure to Ionizing Radiation (OPEIR)**

Please refer to the specific section of the 2015 PQRS Measures Groups Specifications Manual to identify the OPEIR Measures Group Patient Sample Criteria (denominator), individual measures, and numerator options information for use in reporting this Measures Group.

1. Start with G9238 Intent G-code if Utilized
2. Check Procedure Performed:
  - a. If Procedure as Listed in the Measure Group Patient Sample Criteria equals No, do not include in Eligible Population/Denominator. Stop Processing.
  - b. If Procedure as Listed in the Measure Group Patient Sample Criteria equals Yes, include in the Eligible Population/Denominator.
3. Denominator Population
  - a. Include in Eligible Population/Denominator all eligible patients who meet the Patient Sample Criteria (denominator) for the Measures Group. For each measure within the measures group each numerator option is represented by a letter which is used in the Scenarios for Reporting and Performance Algorithms at the end of this document.
4. Start Numerator Options for Measures within the Measures Group
5. Composite Quality Data Code (QDC) G9236 has been created for registries that utilize claims data. This QDC may be reported in lieu of individual QDCs when all quality clinical actions for all applicable measures within the group have been performed for this patient.
6. Measure 359
  - a. Numerator option Performance Met has an arrow pointing to G9236 Composite Quality Data Code (QDC) or Equivalent. Performance Met is represented by letter a<sup>i</sup>.
  - b. Numerator option Performance Exclusion is represented by letter b<sup>i</sup>.
  - c. Numerator option Performance Not Met is represented by letter c<sup>i</sup>.
  - d. Numerator option Not Reported is represented by letter d<sup>i</sup>.
7. Measure 360
  - a. Numerator option Performance Met has an arrow pointing to G9236 Composite Quality Data Code (QDC) or Equivalent. Performance Met is represented by letter a<sup>ii</sup>.
  - b. Numerator option Performance Exclusion is represented by letter b<sup>ii</sup>.
  - c. Numerator option Performance Not Met is represented by letter c<sup>ii</sup>.
  - d. Numerator option Not Reported is represented by letter d<sup>ii</sup>.
8. Measure 361

- a. Numerator option Performance Met has an arrow pointing to G9236 Composite Quality Data Code (QDC) or Equivalent. Performance Met is represented by letter a<sup>iii</sup>.
- b. Numerator option Performance Exclusion is represented by letter b<sup>iii</sup>.
- c. Numerator option Performance Not Met is represented by letter c<sup>iii</sup>.
- d. Numerator option Not Reported is represented by letter d<sup>iii</sup>.

#### 9. Measure 362

- a. Numerator option Performance Met has an arrow pointing to G9236 Composite Quality Data Code (QDC) or Equivalent. Performance Met is represented by letter a<sup>iv</sup>.
- b. Numerator option Performance Exclusion is represented by letter b<sup>iv</sup>.
- c. Numerator option Performance Not Met is represented by letter c<sup>iv</sup>.
- d. Numerator option Not Reported is represented by letter d<sup>iv</sup>.

#### 10. Measure 363

- a. Numerator option Performance Met has an arrow pointing to G9236 Composite Quality Data Code (QDC) or Equivalent. Performance Met is represented by letter a<sup>v</sup>.
- b. Numerator option Performance Exclusion is represented by letter b<sup>v</sup>.
- c. Numerator option Performance Not Met is represented by letter c<sup>v</sup>.
- d. Numerator option Not Reported is represented by letter d<sup>v</sup>.

#### 11. Measure 364

- a. Measure #364 is only reported when the patient is 18 years of age or older and has a specific procedure performed (see measures group overview for specific coding) accompanied by a finding of an incidental pulmonary nodule. When measure #364 is Not Applicable it is represented by letter e<sup>vi</sup> in the Scenarios for Reporting Algorithms.
- b. Numerator option Performance Met has an arrow pointing to G9236 Composite Quality Data Code (QDC) or Equivalent. Performance Met is represented by letter a<sup>vi</sup>.
- c. Numerator option Performance Exclusion is represented by letter b<sup>vi</sup>.
- d. Numerator option Performance Not Met is represented by letter c<sup>vi</sup>.
- e. Numerator option Not Reported is represented by letter d<sup>vi</sup>.

#### 12. Scenarios for Reporting and Performance Algorithms

##### 13. Patient X Age 65 with Finding of Incidental Pulmonary Nodule

- a. Patient X Met Measure 359 (represented by a<sup>i</sup>)
- b. Patient X Met Measure 360 (represented by a<sup>ii</sup>)
- c. Patient X Exclusion Reported for Measure 361 (represented by b<sup>iii</sup>)
- d. Patient X Met Measure 362 (represented by a<sup>iv</sup>)
- e. Patient X Not Met but Reported Measure 363 (represented by c<sup>v</sup>)
- f. Patient X Met Measure 364 (represented by a<sup>vi</sup>)

##### 14. Patient Y Age 17 with Finding of Incidental Pulmonary Nodule

- a. Patient Y Not Met but Reported Measure 359 (represented by c<sup>i</sup>)

- b. Patient Y Not Met but Reported Measure 360 (represented by c<sup>ii</sup>)
  - c. Patient Y Met Measure 361 (represented by a<sup>iii</sup>)
  - d. Patient Y Met Measure 362 (represented by a<sup>iv</sup>)
  - e. Patient Y Met Measure 363 (represented by a<sup>v</sup>)
  - f. Patient Y Not Applicable for Measure 364 (represented by e<sup>vi</sup>)
- 15. Patient Z Age 70 No Finding of Incidental Pulmonary Nodule
  - a. Patient Z Met Measure 359 (represented by a<sup>i</sup>)
  - b. Patient Z Met Measure 360 (represented by a<sup>ii</sup>)
  - c. Patient Z Not Met but Reported Measure 361 (represented by c<sup>iii</sup>)
  - d. Patient Z did Not Report Measure 362 (represented by d<sup>iv</sup>)
  - e. Patient Z Met Measure 363 (represented by a<sup>v</sup>)
  - f. Patient Z Not Applicable for Measure 364 (represented by e<sup>vi</sup>)
- 16. Reporting Algorithm
  - a. Reporting of all applicable measures contained in the measures group, per eligible patient, equals one
  - b. Patient X Reporting equals 1 Plus Patient Y Reporting equals 1 Plus Patient Z Reporting equals 0 for a total of 2 of the Required 20 Patient Sample Reported
- 17. Performance Algorithms
- 18. Measure 359
  - a. Performance Met equals 2 divided by Reported QDC for 3 eligible patients minus 0 Performance Exclusions equals 66.67% Performance Rate
- 19. Measure 360
  - a. Performance Met equals 2 divided by Reported QDC for 3 eligible patients minus 0 Performance Exclusions equals 66.67% Performance Rate
- 20. Measure 361
  - a. Performance Met equals 1 divided by Reported QDC for 3 eligible patients minus 1 Performance Exclusions equals 50% Performance Rate
- 21. Measure 362
  - a. Performance Met equals 2 divided by Reported QDC for 2 eligible patients minus 0 Performance Exclusions equals 100% Performance Rate
- 22. Measure 363
  - a. Performance Met equals 2 divided by Reported QDC for 3 eligible patients minus 0 Performance Exclusions equals 66.67% Performance Rate
- 23. Measure 364
  - a. Performance Met equals 1 divided by Reported QDC for 1 eligible patient minus 0 Performance Exclusions equals 100% Performance Rate