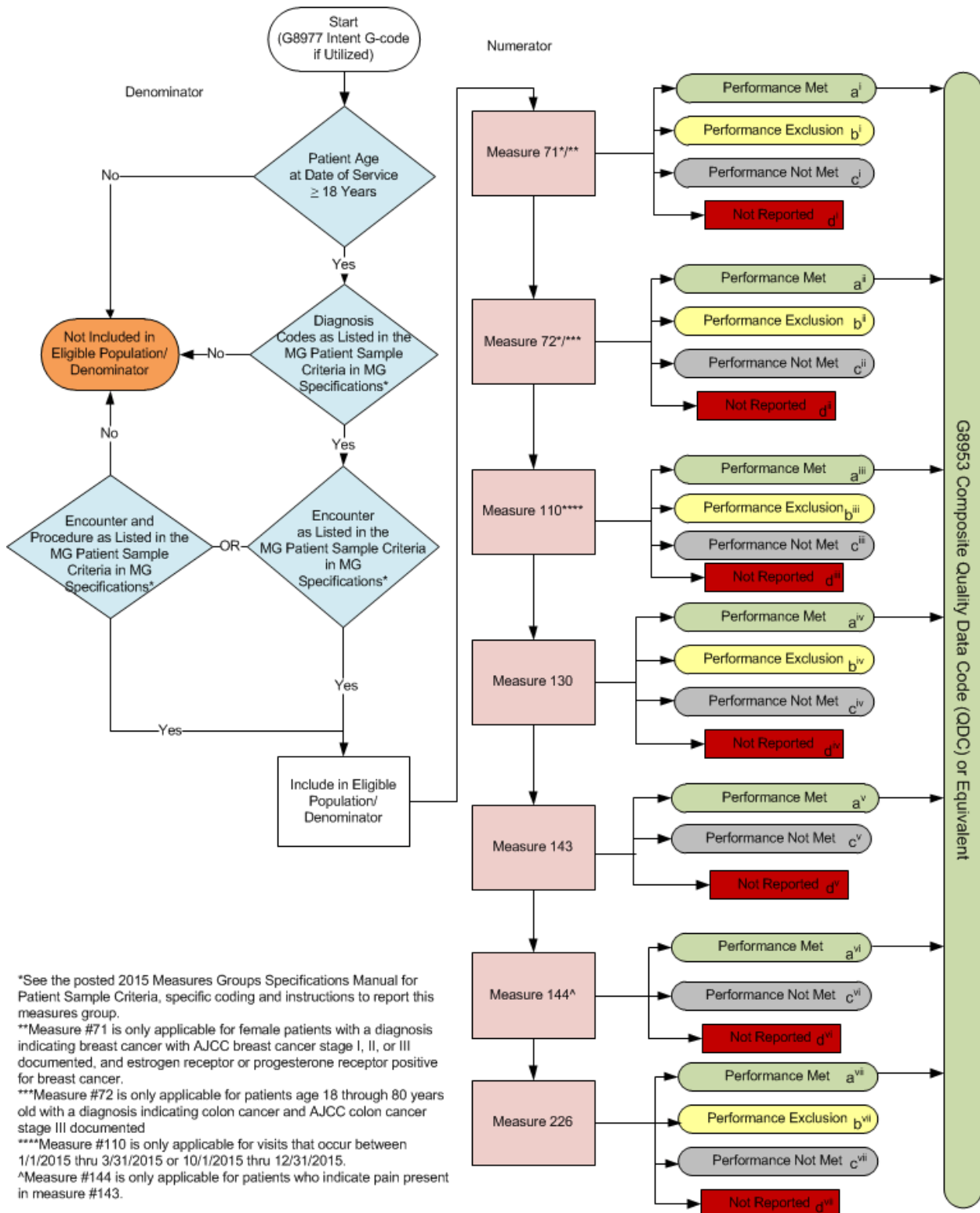


# 2015 Measures Group (MG) Flow Oncology

Note: For Measure numerator details, please refer to the Measures Groups Specification Manual



## 2015 Measures Group (MG) Flow Oncology

### Scenarios for Reporting (Patient) and Performance (Measure) Algorithms:

a= Performance Met; b=Performance Exclusion; c=Performance Not Met; d=Not Reported; e=Not Applicable

	Measure 71** (i)	Measure 72*** (ii)	Measure 110**** (iii)	Measure 130 (iv)	Measure 143 (v)	Measure 144^ (vi)	Measure 226 (vii)
Patient X, Female, Age 81, AJCC Stage III Colon Cancer, No Pain Present, Visit 7/2/2015	Not Applicable (e <sup>i</sup> )	Not Applicable (e <sup>i</sup> )	Not Applicable (e <sup>iii</sup> )	Not Met (c <sup>iv</sup> )	Met (a <sup>v</sup> )	Not Applicable (e <sup>vi</sup> )	Met (a <sup>vii</sup> )
Patient Y, Male, Age 67, AJCC Stage III Colon Cancer, Pain Present, Visit 2/3/2015	Not Applicable (e <sup>i</sup> )	Met (a <sup>ii</sup> )	Exclusion (b <sup>iii</sup> )	Met (a <sup>iv</sup> )	Met (a <sup>v</sup> )	Met (a <sup>vi</sup> )	Exclusion (b <sup>vii</sup> )
Patient Z, Female, Age 67, AJCC Stage II Breast Cancer, Pain Present, Visit 11/3/2015	Met (a <sup>i</sup> )	Not Applicable (e <sup>i</sup> )	Met (a <sup>iii</sup> )	Met (a <sup>iv</sup> )	Met (a <sup>v</sup> )	Not Reported (d <sup>vi</sup> )	Met (a <sup>vii</sup> )

### Reporting Algorithm^^

Patient X [e<sup>i</sup>, e<sup>ii</sup>, e<sup>iii</sup>, c<sup>iv</sup>, a<sup>v</sup>, e<sup>vi</sup>, a<sup>vii</sup>] + Patient Y [e<sup>i</sup>, a<sup>ii</sup>, b<sup>iii</sup>, a<sup>iv</sup>, a<sup>v</sup>, a<sup>vi</sup>, b<sup>vii</sup>] + Patient Z [a<sup>i</sup>, e<sup>ii</sup>, a<sup>iii</sup>, a<sup>iv</sup>, a<sup>v</sup>, d<sup>vi</sup>, a<sup>vii</sup>] = 1+1+0 =  
2 of the Required 20 Patient Sample Reported

### Performance Algorithms

#### Measure 71

Performance Met (1) = 1 = 100.00%  
Reported QDC for eligible patient (1) – Performance Exclusion (0)

#### Measure 72

Performance Met (1) = 1 = 100.00%  
Reported QDC for eligible patient (1) – Performance Exclusion (0)

#### Measure 110

Performance Met (1) = 1 = 100.00%  
Reported QDC for eligible patient (2) – Performance Exclusion (1)

#### Measure 130

Performance Met (2) = 2 = 66.67%  
Reported QDC for eligible patient (3) – Performance Exclusion (0)

#### Measure 143

Performance Met (3) = 3 = 100.00%  
Reported QDC for eligible patient (3)

#### Measure 144

Performance Met (1) = 1 = 100.00%  
Reported QDC for eligible patient (1)

#### Measure 226

Performance Met (2) = 2 = 100.00%  
Reported QDC for eligible patient (3) – Performance Exclusion (1)

\*See the posted 2015 Measures Groups Specifications Manual for Patient Sample Criteria, specific coding and instructions to report this measures group.

\*\*Measure #71 is only applicable for female patients with a diagnosis indicating breast cancer with AJCC breast cancer stage I, II, or III documented, and estrogen receptor or progesterone receptor positive for breast cancer.

\*\*\*Measure #72 is only applicable for patients age 18 through 80 years old with a diagnosis indicating colon cancer and AJCC colon cancer stage III documented.

\*\*\*\*Measure #110 is only applicable for visits that occur between 1/1/2015 thru 3/31/2015 or 10/1/2015 thru 12/31/2015.

^Measure #144 is only applicable for patients who indicate pain present in measure #143.

^^Reporting of all applicable measures contained in measures group, per patient, equals one.

## **2015 Measures Group (MG) Flow Oncology**

Please refer to the specific section of the 2015 PQRS Measures Groups Specifications Manual to identify the Oncology Measures Group Patient Sample Criteria (denominator), individual measures, and numerator options information for use in reporting this Measures Group.

1. Start with G8977 Intent G-code if Utilized
2. Check Patient Age:
  - a. If the Age is greater than or equal to 18 years of age at Date of Service equals No, do not include in Eligible Population/Denominator. Stop Processing.
  - b. If the Age is greater than or equal to 18 years of age at Date of Service equals Yes, proceed to check Patient Diagnosis.
3. Check Patient Diagnosis:
  - a. If Diagnosis of Cancer as Listed in the Measures Group Patient Sample Criteria equals No, do not include in Eligible Population/Denominator. Stop Processing.
  - b. If Diagnosis of Cancer as Listed in the Measures Group Patient Sample Criteria equals Yes, proceed to check First Encounter.
4. Check Encounter:
  - a. If Encounter as Listed in the Measure Group Patient Sample Criteria equals Yes, skip Encounter and Procedure and include in the Eligible Population/Denominator.
  - b. If Encounter as Listed in the Measure Group Patient Sample Criteria equals No, proceed to check Encounter and Procedure as Listed in the Measure Group Patient Criteria.
5. Check Encounter and Procedure:
  - a. If Encounter and Procedure as Listed in the Measure Group Patient Sample Criteria equals No, do not include in the Eligible Population/Denominator. Stop Processing
  - b. If Encounter and Procedure as Listed in the Measure Group Patient Sample Criteria equals Yes, include in the Eligible Population/Denominator.
6. Denominator Population
  - a. Include in Eligible Population/Denominator all eligible patients who meet the Patient Sample Criteria (denominator) for the Measures Group. For each measure within the measures group each numerator option is represented by a letter which is used in the Scenarios for Reporting and Performance Algorithms at the end of this document.
7. Start Numerator Options for Measures within the Measures Group

8. Composite Quality Data Code (QDC) G8953 has been created for registries that utilize claims data. This QDC may be reported in lieu of individual QDCs when all quality clinical actions for all applicable measures within the group have been performed for this patient.
9. Measure 71
  - a. Measure #71 is only applicable for female patients with a diagnosis indicating breast cancer with AJCC breast cancer stage I, II, or III documented and estrogen receptor or progesterone receptor positive for breast cancer. When measure #71 is Not Applicable it is represented by letter e<sup>i</sup> in the Scenarios for Reporting Algorithms.
  - b. Numerator option Performance Met has an arrow pointing to G8953 Composite Quality Data Code (QDC) or Equivalent. Performance Met is represented by letter a<sup>i</sup>.
  - c. Numerator option Performance Exclusion is represented by letter b<sup>i</sup>.
  - d. Numerator option Performance Not Met is represented by letter c<sup>i</sup>.
  - e. Numerator option Not Reported is represented by letter d<sup>i</sup>.
10. Measure 72
  - a. Measure #72 is only applicable for patients 18 through 80 years of age with a diagnosis indicating colon cancer and AJCC colon cancer stage III documented. When measure #72 is Not Applicable it is represented by letter e<sup>ii</sup> in the Scenarios for Reporting Algorithms.
  - b. Numerator option Performance Met has an arrow pointing to G8953 Composite Quality Data Code (QDC) or Equivalent. Performance Met is represented by letter a<sup>ii</sup>.
  - c. Numerator option Performance Exclusion is represented by letter b<sup>ii</sup>.
  - d. Numerator option Performance Not Met is represented by letter c<sup>ii</sup>.
  - e. Numerator option Not Reported is represented by letter d<sup>ii</sup>.
11. Measure 110
  - a. Measure #110 is only applicable for visits that occur between 1/1/2015 thru 3/31/2015 or 10/1/2015 thru 12/31/2015. When measure #110 is Not Applicable it is represented by letter e<sup>iii</sup> in the Scenarios for Reporting Algorithms.
  - b. Numerator option Performance Met has an arrow pointing to G8953 Composite Quality Data Code (QDC) or Equivalent. Performance Met is represented by letter a<sup>iii</sup>.
  - c. Numerator option Performance Exclusion is represented by letter b<sup>iii</sup>.
  - d. Numerator option Performance Not Met is represented by letter c<sup>iii</sup>.
  - e. Numerator option Not Reported is represented by letter d<sup>iii</sup>.
12. Measure 130
  - a. Numerator option Performance Met has an arrow pointing to G8953 Composite Quality Data Code (QDC) or Equivalent. Performance Met is represented by letter a<sup>iv</sup>.
  - b. Numerator option Performance Exclusion is represented by letter b<sup>iv</sup>.
  - c. Numerator option Performance Not Met is represented by letter c<sup>iv</sup>.

- d. Numerator option Not Reported is represented by letter d<sup>iv</sup>.

13. Measure 143

- a. Numerator option Performance Met has an arrow pointing to G8953 Composite Quality Data Code (QDC) or Equivalent. Performance Met is represented by letter a<sup>v</sup>.
- b. Numerator option Performance Not Met is represented by letter c<sup>v</sup>.
- c. Numerator option Not Reported is represented by letter d<sup>v</sup>.

14. Measure 144

- a. Measure #144 is only applicable for patients who indicate pain present in measure #143. When measure #144 is Not Applicable it is represented by letter e<sup>vi</sup> in the Scenarios for Reporting Algorithms.
- b. Numerator option Performance Met has an arrow pointing to G8953 Composite Quality Data Code (QDC) or Equivalent. Performance Met is represented by letter a<sup>vi</sup>.
- c. Numerator option Performance Not Met is represented by letter c<sup>vi</sup>.
- d. Numerator option Not Reported is represented by letter d<sup>vi</sup>.

15. Measure 226

- a. Numerator option Performance Met has an arrow pointing to G8953 Composite Quality Data Code (QDC) or Equivalent. Performance Met is represented by letter a<sup>vii</sup>.
- b. Numerator option Performance Exclusion is represented by letter b<sup>vii</sup>.
- c. Numerator option Performance Not Met is represented by letter c<sup>vii</sup>.
- d. Numerator option Not Reported is represented by letter d<sup>vii</sup>.

16. Scenarios for Reporting and Performance Algorithms

17. Patient X, Female, Age 81, With AJCC Stage III Colon Cancer Diagnosis, No Pain Present, Visit Date 7/2/2015

- a. Patient X Not Applicable for Measure 71 (represented by e<sup>i</sup>)
- b. Patient X Not Applicable for Measure 72 (represented by e<sup>ii</sup>)
- c. Patient X Not Applicable for Measure 110 (represented by e<sup>iii</sup>)
- d. Patient X Not Met but Reported Measure 130 (represented by c<sup>iv</sup>)
- e. Patient X Met Measure 143 (represented by a<sup>v</sup>)
- f. Patient X Not Applicable for Measure 144 (represented by e<sup>vi</sup>)
- g. Patient X Met Measure 226 (represented by a<sup>vii</sup>)

18. Patient Y, Male, Age 67, AJCC Stage III Colon Cancer Diagnosis, Pain Present, Visit Date 2/3/2015

- a. Patient Y Not Applicable for Measure 71 (represented by e<sup>i</sup>)
- b. Patient Y Met Measure 72 (represented by a<sup>ii</sup>)
- c. Patient Y Exclusion Reported for Measure 110 (represented by b<sup>iii</sup>)
- d. Patient Y Met Measure 130 (represented by a<sup>iv</sup>)
- e. Patient Y Met Measure 143 (represented by a<sup>v</sup>)
- f. Patient Y Met Measure 144 (represented by a<sup>vi</sup>)
- g. Patient Y Exclusion Reported for Measure 226 (represented by b<sup>vii</sup>)

19. Patient Z, Female, Age 67, AJCC Stage II Breast Cancer Diagnosis, Pain Present, Visit Date 11/3/2015

- a. Patient Z Met Measure 71 (represented by a<sup>i</sup>)
- b. Patient Z Not Applicable for Measure 72 (represented by e<sup>ii</sup>)
- c. Patient Z Met Measure 110 (represented by a<sup>iii</sup>)
- d. Patient Z Met Measure 130 (represented by a<sup>iv</sup>)
- e. Patient Z Met Measure 143 (represented by a<sup>v</sup>)
- f. Patient Z did Not Report Measure 144 (represented by d<sup>vi</sup>)
- g. Patient Z Met Measure 226 (represented by a<sup>vii</sup>)

20. Reporting Algorithm

- a. Reporting of all applicable measures contained in the measures group, per eligible patient, equals one
- b. Patient X Reporting equals 1 Plus Patient Y Reporting equals 1 Plus Patient Z Reporting equals 0 for a total of 2 of the Required 20 Patient Sample Reported

21. Performance Algorithms

22. Measure 71

- a. Performance Met equals 1 divided by Reported QDC for 1 eligible patient minus 0 Performance Exclusions equals 100% Performance Rate

23. Measure 72

- a. Performance Met equals 1 divided by Reported QDC for 1 eligible patient minus 0 Performance Exclusions equals 100% Performance Rate

24. Measure 110

- a. Performance Met equals 1 divided by Reported QDC for 2 eligible patients minus 1 Performance Exclusion equals 100% Performance Rate

25. Measure 130

- a. Performance Met equals 2 divided by Reported QDC for 3 eligible patients minus 0 Performance Exclusions equals 66.67% Performance Rate

26. Measure 143

- a. Performance Met equals 3 divided by Reported QDC for 3 eligible patients equals 100% Performance Rate

27. Measure 144

- a. Performance Met equals 1 divided by Reported QDC for 1 eligible patient equals 100% Performance Rate

28. Measure 226

- a. Performance Met equals 2 divided by Reported QDC for 3 eligible patients minus 1 Performance Exclusion equals 100% Performance Rate