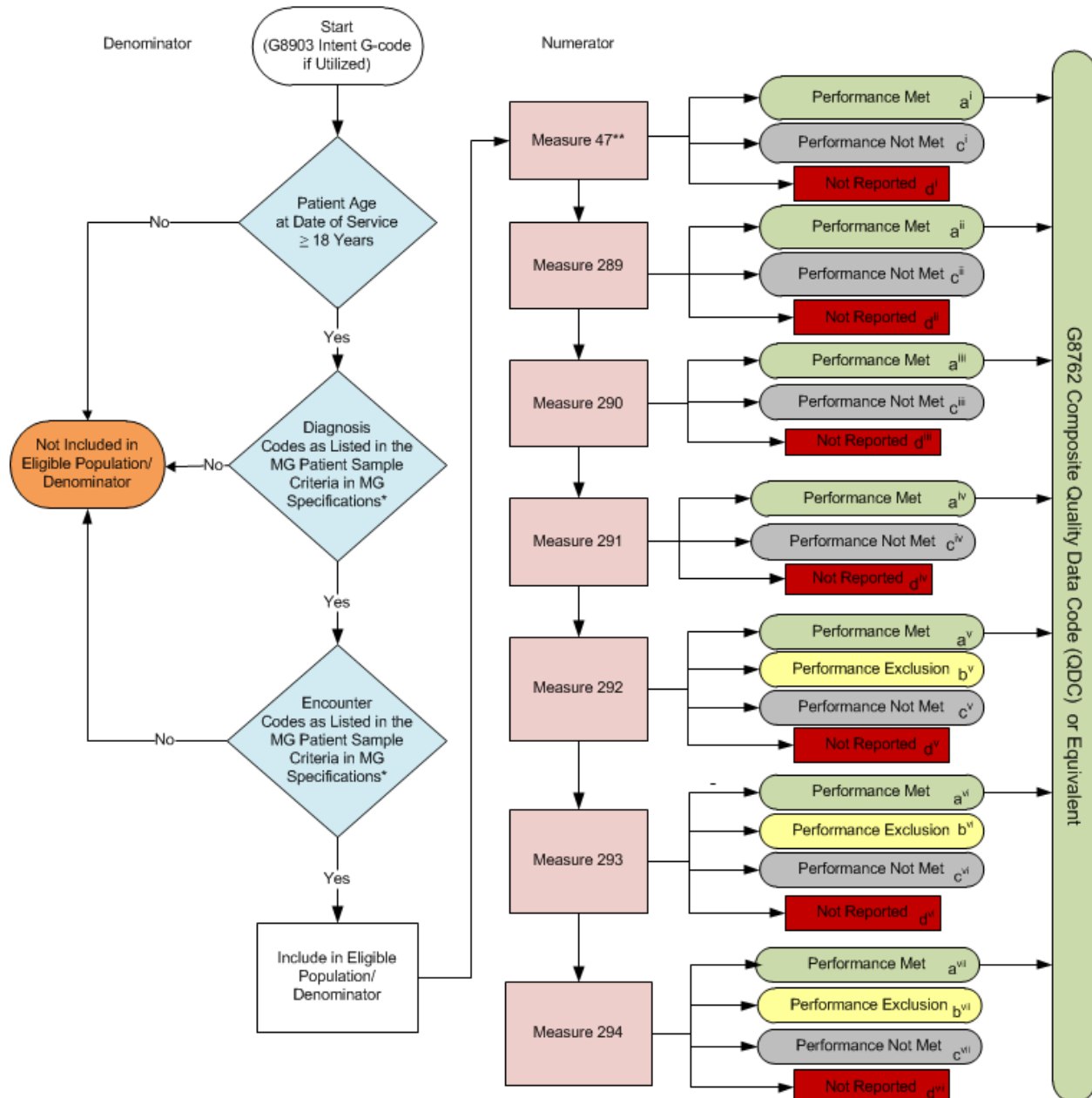


2015 Measures Group (MG) Flow Parkinson's Disease

Note: For Measure numerator details, please refer to the Measures Groups Specification Manual



* See the posted 2015 Measures Groups Specifications Manual for Patient Sample Criteria, specific coding and instructions to report this measures group.

**Measure #47 need only be reported on patients 65 years and older.

2015 Measures (MG) Flow Parkinson's Disease

Scenarios for Reporting (Patient) and Performance (Measure) Algorithms:

a= Performance Met; b=Performance Exclusion; c=Performance Not Met; d=Not Reported; e=Not Applicable

	<u>Measure 47**</u> (i)	<u>Measure 289</u> (ii)	<u>Measure 290</u> (iii)	<u>Measure 291</u> (iv)	<u>Measure 292</u> (v)	<u>Measure 293</u> (vi)	<u>Measure 294</u> (vii)
Patient X Age 45	Not Applicable (e')	Met (a ⁱ)	Met (a ⁱⁱ)	Met (a ^{iv})	Exclusion (b ^v)	Met (a ^{vi})	Met (a ^{vii})
Patient Y Age 70	Met (a ⁱ)	Not Met (c ⁱⁱ)	Met (a ⁱⁱ)	Met (a ^{iv})	Met (a ^v)	Exclusion (b ^{vi})	Met (a ^{vii})
Patient Z Age 68	Met (a ⁱ)	Met (a ⁱⁱ)	Not Met (c ⁱⁱⁱ)	Met (a ^{iv})	Not Reported (d ^v)	Met (a ^{vi})	Met (a ^{vii})

Reporting Algorithm***

Patient X [eⁱ, aⁱⁱ, aⁱⁱⁱ, a^{iv}, b^v, a^{vi}, a^{vii}] + Patient Y [aⁱ, cⁱⁱ, aⁱⁱⁱ, a^{iv}, a^v, b^{vi}, a^{vii}] + Patient Z [aⁱ, aⁱⁱ, cⁱⁱⁱ, a^{iv}, d^v, a^{vi}, a^{vii}] = 1+1+0 =
2 of the Required 20 Patient Sample Reported

Performance Algorithms

Measure 47

Performance Met (2) = $\frac{2}{2} = 100.00\%$
Reported QDC for eligible patient (2)

Measure 289

Performance Met (2) = $\frac{2}{3} = 66.67\%$
Reported QDC for eligible patient (3)

Measure 290

Performance Met (2) = $\frac{2}{3} = 66.67\%$
Reported QDC for eligible patient (3)

Measure 291

Performance Met (3) = $\frac{3}{3} = 100.00\%$
Reported QDC for eligible patient (3)

Measure 292

Performance Met (1) = $\frac{1}{1} = 100.00\%$
Reported QDC for eligible patient (2) – Performance Exclusion (1)

Measure 293

Performance Met (2) = $\frac{2}{2} = 100.00\%$
Reported QDC for eligible patient (3) – Performance Exclusion (1)

Measure 294

Performance Met (3) = $\frac{3}{3} = 100.00\%$
Reported QDC for eligible patient (3) – Performance Exclusion (0)

**Measure #47 need only be reported on patients 65 years and older.

***Reporting of all applicable measures contained in measures group, per eligible patient, equals one.

2015 Measures Group (MG) Flow Parkinson's Disease

Please refer to the specific section of the 2015 PQRS Measures Groups Specifications Manual to identify specific coding and instructions to report the Parkinson's Disease Measures Group Patient Sample Criteria (denominator), individual measures, and numerator options information for use in reporting this Measures Group.

1. Start with G8903 Intent G-code if Utilized
2. Check Patient Age:
 - a. If the Age is greater than or equal to 18 years of age at Date of Service equals No, do not include in Eligible Population/Denominator. Stop Processing.
 - b. If the Age is greater than or equal to 18 years of age at Date of Service equals Yes, proceed to check Patient Diagnosis.
3. Check Patient Diagnosis:
 - a. If Diagnosis of Parkinson's Disease as Listed in the MG Patient Sample Criteria equals No, do not include in Eligible Population/Denominator. Stop Processing.
 - b. If Diagnosis of Parkinson's Disease as Listed in the MG Patient Sample Criteria equals Yes, proceed to check Encounter Performed.
4. Check Encounter Performed:
 - a. If Encounter as Listed in the MG Patient Sample Criteria equals No, do not include in Eligible Population. Stop Processing.
 - b. If Encounter as Listed in the MG Patient Sample Criteria equals Yes, include in the Eligible Population/Denominator.
5. Denominator Population
 - a. Include in Eligible Population/Denominator is all eligible patients who meet the Patient Sample Criteria (denominator) for the Measures Group. For each measure within the measures group each numerator option is represented by a letter which is used in the Scenarios for Reporting and Performance Algorithms at the end of this document.
6. Start Numerator Options for Measures within the Measures Group
7. Composite Quality Data Code (QDC) G8762 has been created for registries that utilize claims data. This QDC may be reported in lieu of individual QDCs when all quality clinical actions for all applicable measures within the group have been performed for this patient.
8. Measure 47
 - a. Measure #47 need only be reported on patients 65 years and older. When measure #47 is Not Applicable it is represented by letter eⁱ in the Scenarios for Reporting Algorithms.

- b. Numerator option Performance Met has an arrow pointing to G8762 Composite Quality Data Code (QDC) or Equivalent. Performance Met is represented by letter aⁱ.
- c. Numerator option Performance Not Met is represented by letter cⁱ.
- d. Numerator option Not Reported is represented by letter dⁱ.

9. Measure 289

- a. Numerator option Performance Met has an arrow pointing to G8762 Composite Quality Data Code (QDC) or Equivalent. Performance Met is represented by letter aⁱⁱ.
- b. Numerator option Performance Not Met is represented by letter cⁱⁱ.
- c. Numerator option Not Reported is represented by letter dⁱⁱ.

9. Measure 290

- a. Numerator option Performance Met has an arrow pointing to G8762 Composite Quality Data Code (QDC) or Equivalent. Performance Met is represented by letter aⁱⁱⁱ.
- b. Numerator option Performance Not Met is represented by letter cⁱⁱⁱ.
- c. Numerator option Not Reported is represented by letter dⁱⁱⁱ.

10. Measure 291

- a. Numerator option Performance Met has an arrow pointing to G8762 Composite Quality Data Code (QDC) or Equivalent. Performance Met is represented by letter a^{iv}.
- b. Numerator option Performance Not Met is represented by letter c^{iv}.
- c. Numerator option Not Reported is represented by letter d^{iv}.

11. Measure 292

- a. Numerator option Performance Met has an arrow pointing to G8762 Composite Quality Data Code (QDC) or Equivalent. Performance Met is represented by letter a^v.
- b. Numerator option Performance Exclusion is represented by letter b^v.
- c. Numerator option Performance Not Met is represented by letter c^v.
- d. Numerator option Not Reported is represented by letter d^v.

12. Measure 293

- a. Numerator option Performance Met has an arrow pointing to G8762 Composite Quality Data Code (QDC) or Equivalent. Performance Met is represented by letter a^{vi}.
- b. Numerator option Performance Exclusion is represented by letter b^{vi}.
- c. Numerator option Performance Not Met is represented by letter c^{vi}.
- d. Numerator option Not Reported is represented by letter d^{vi}.

13. Measure 294

- a. Numerator option Performance Met has an arrow pointing to G8762 Composite Quality Data Code (QDC) or Equivalent. Performance Met is represented by letter a^{vii}.
- b. Numerator option Performance Exclusion is represented by letter b^{vii}.

- c. Numerator option Performance Not Met is represented by letter c^{vii}.
- d. Numerator option Not Reported is represented by letter d^{vii}.

14. Scenarios for Reporting and Performance Algorithms

15. Patient X Age 45

- a. Patient X Not Applicable for Measure 47 (represented by eⁱ)
- b. Patient X Met Measure 289 (represented by aⁱⁱ)
- c. Patient X Met Measure 290 (represented by aⁱⁱⁱ)
- d. Patient X Met Measure 291 (represented by a^{iv})
- e. Patient X Exclusion Reported for Measure 292 (represented by b^v)
- f. Patient X Met Reported Measure 293 (represented by a^{vi})
- g. Patient X Met Reported Measure 294 (represented by a^{vii})

16. Patient Y Age 70

- a. Patient Y Met Measure 47 (represented by aⁱ)
- b. Patient Y Not Met but Reported Measure 289 (represented by cⁱⁱ)
- c. Patient Y Met Measure 290 (represented by aⁱⁱⁱ)
- d. Patient Y Met Measure 291 (represented by a^{iv})
- e. Patient Y Met Measure 292 (represented by a^v)
- f. Patient Y Exclusion Reported for Measure 293 (represented by b^{vi})
- g. Patient Y Met Measure 294 (represented by a^{vii})

17. Patient Z Age 68

- a. Patient Z Met Measure 47 (represented by aⁱ)
- b. Patient Z Met Measure 289 (represented by aⁱⁱ)
- c. Patient Z Not Met but Reported Measure 290 (represented by cⁱⁱⁱ)
- d. Patient Z Met Measure 291 (represented by a^{iv})
- e. Patient Z did Not Report Measure 292 (represented by d^v)
- f. Patient Z Met Measure 293 (represented by a^{vi})
- h. Patient Z Met Measure 294 (represented by a^{vii})

18. Reporting Algorithm

- a. Reporting of all applicable measures contained in the measures group, per eligible patient, equals one
- b. Patient X Reporting equals 1 Plus Patient Y Reporting equals 1 Plus Patient Z Reporting equals 0 for a total of 2 of the Required 20 Patient Sample Reported

19. Performance Algorithms

20. Measure 47

- a. Performance Met equals 2 divided by Reported QDC for 2 eligible patients equals 100% Performance Rate

21. Measure 289

- a. Performance Met equals 2 divided by Reported QDC for 3 eligible patients equals 66.67% Performance Rate

22. Measure 290

- a. Performance Met equals 2 divided by Reported QDC for 3 eligible patients equals 66.67% Performance Rate

23. Measure 291

- a. Performance Met equals 3 divided by Reported QDC for 3 eligible patients equals 100% Performance Rate

24. Measure 292

- a. Performance Met equals 1 divided by Reported QDC for 2 eligible patients minus 1 Performance Exclusion equals 100% Performance Rate

25. Measure 293

- a. Performance Met equals 2 divided by Reported QDC for 3 eligible patients minus 1 Performance Exclusion equals 100% Performance Rate

26. Measure 294

- a. Performance Met equals 3 divided by Reported QDC for 3 eligible patients minus 0 Performance Exclusions equals 100% Performance Rate