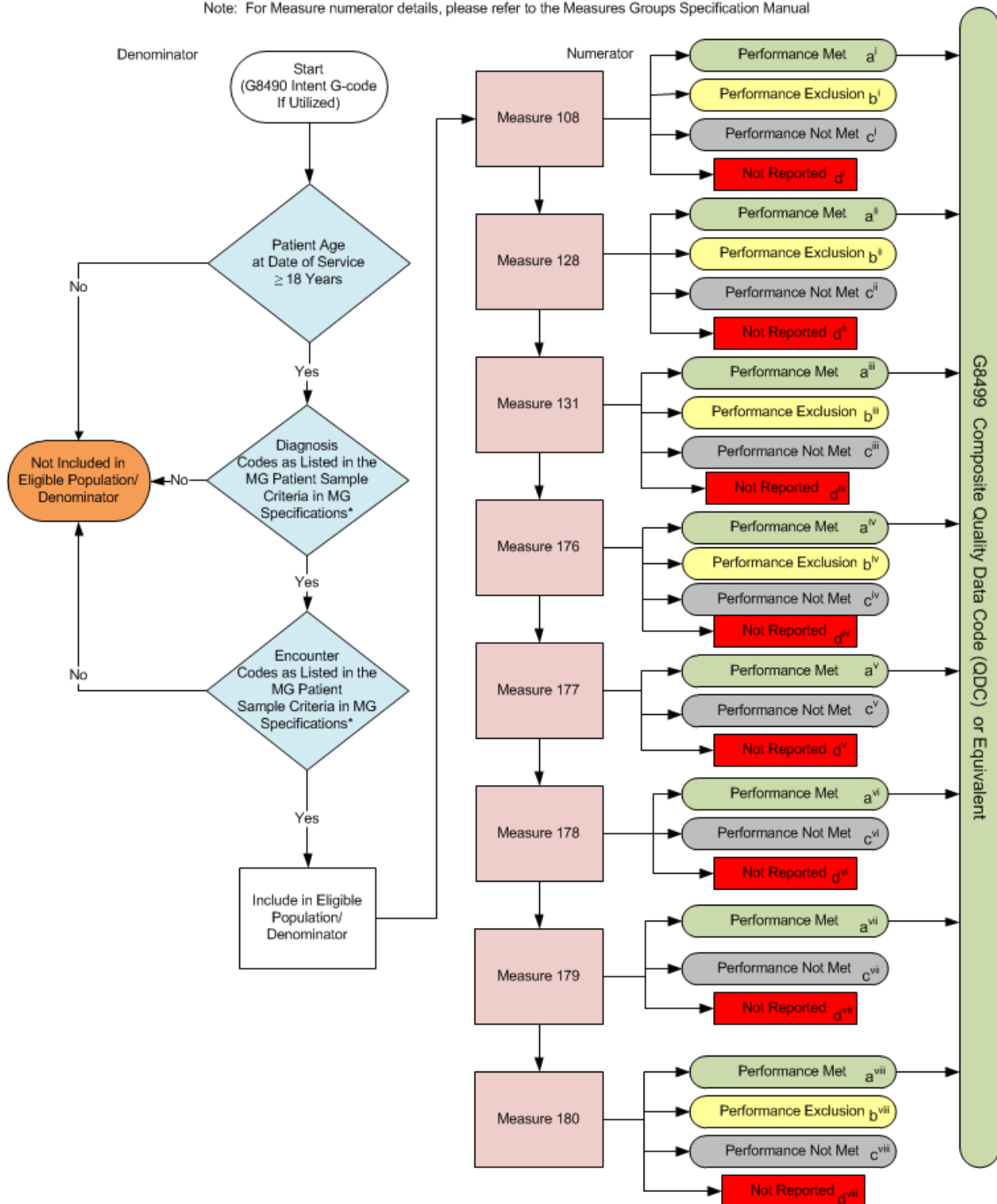


# 2015 Measures Group (MG) Flow Rheumatoid Arthritis (RA)

Note: For Measure numerator details, please refer to the Measures Groups Specification Manual



\*See the posted 2015 Measures Groups Specifications Manual for Patient Sample Criteria, specific coding and instructions to report this measures group.

## 2015 Measures Group (MG) Flow Rheumatoid Arthritis (RA)

### Scenarios for Reporting (Patient) and Performance (Measure) Algorithms:

a= Performance Met; b=Performance Exclusion; c=Performance Not Met; d=Not Reported

	<u>Measure 108</u> (i)	<u>Measure 128</u> (ii)	<u>Measure 131</u> (iii)	<u>Measure 176</u> (iv)	<u>Measure 177</u> (v)	<u>Measure 178</u> (vi)	<u>Measure 179</u> (vii)	<u>Measure 180</u> (viii)
Patient X	Met (a <sup>i</sup> )	Met (a <sup>ii</sup> )	Met (a <sup>iii</sup> )	Met (a <sup>iv</sup> )	Met (a <sup>v</sup> )	Met (a <sup>vi</sup> )	Met (a <sup>vii</sup> )	Met (a <sup>viii</sup> )
Patient Y	Met (a <sup>i</sup> )	Not Met (c <sup>ii</sup> )	Met (a <sup>iii</sup> )	Not Met (c <sup>iv</sup> )	Met (a <sup>v</sup> )	Met (a <sup>vi</sup> )	Met (a <sup>vii</sup> )	Exclusion (b <sup>viii</sup> )
Patient Z	Met (a <sup>i</sup> )	Met (a <sup>ii</sup> )	Met (a <sup>iii</sup> )	Met (a <sup>iv</sup> )	Not Reported (d <sup>v</sup> )	Met (a <sup>vi</sup> )	Met (a <sup>vii</sup> )	Met (a <sup>viii</sup> )

### Reporting Algorithm\*\*

Patient X [a<sup>i</sup>,a<sup>ii</sup>,a<sup>iii</sup>,a<sup>iv</sup>,a<sup>v</sup>,a<sup>vi</sup>,a<sup>vii</sup>,a<sup>viii</sup>] + Patient Y [a<sup>i</sup>,c<sup>ii</sup>,a<sup>iii</sup>,c<sup>iv</sup>,a<sup>v</sup>,a<sup>vi</sup>,a<sup>vii</sup>,b<sup>viii</sup>] + Patient Z [a<sup>i</sup>,a<sup>ii</sup>,a<sup>iii</sup>,a<sup>iv</sup>,d<sup>v</sup>,a<sup>vi</sup>,a<sup>vii</sup>,a<sup>viii</sup>] = 1+1+0 = 2 of the 20 Required Patient Sample Reported

### Performance Algorithms

#### Measure 108

Performance Met (3) =  $\frac{3}{3} = 100.00\%$   
Reported QDC for eligible patient (3) – Performance Exclusion (0)

#### Measure 128

Performance Met (2) =  $\frac{2}{3} = 66.67\%$   
Reported QDC for eligible patient (3) – Performance Exclusion (0)

#### Measure 131

Performance Met (3) =  $\frac{3}{3} = 100.00\%$   
Reported QDC for eligible patient (3) – Performance Exclusion (0)

#### Measure 176

Performance Met (2) =  $\frac{2}{3} = 66.67\%$   
Reported QDC for eligible patient (3) – Performance Exclusion (0)

#### Measure 177

Performance Met (2) =  $\frac{2}{2} = 100.00\%$   
Reported QDC for eligible patient (2)

#### Measure 178

Performance Met (3) =  $\frac{3}{3} = 100.00\%$   
Reported QDC for eligible patient (3)

#### Measure 179

Performance Met (3) =  $\frac{3}{3} = 100.00\%$   
Reported QDC for eligible patient (3)

#### Measure 180

Performance Met (2) =  $\frac{2}{2} = 100.00\%$   
Reported QDC for eligible patient (3) – Performance Exclusion (1)

\*\*Reporting of all measures contained in measures group, per eligible patient, equals one.

## **2015 Measures Group (MG) Flow Rheumatoid Arthritis (RA)**

Please refer to the specific section of the 2015 PQRS Measures Groups Specifications Manual to identify the specific coding and instructions to report the Rheumatoid Arthritis (RA) Measures Group Patient Sample Criteria (denominator), individual measures, and numerator options information for use in reporting this Measures Group.

1. Start with G8490 Intent G-code if Utilized
2. Check Patient Age:
  - a. If the Age is greater than or equal to 18 years of age at Date of Service equals No, do not include in Eligible Population/Denominator. Stop Processing.
  - b. If the Age is greater than or equal to 18 years of age at Date of Service equals Yes, proceed to check Patient Diagnosis.
3. Check Patient Diagnosis:
  - a. If Diagnosis indicating Rheumatoid Arthritis (RA) as listed in the Measures Group Patient Sample Criteria equals No, do not include in Eligible Population/Denominator. Stop Processing.
  - b. If Diagnosis indicating Rheumatoid Arthritis (RA) as listed in the Measures Group Patient Sample Criteria equals Yes, proceed to check Encounter Performed.
4. Check Encounter Performed:
  - a. If Encounter as Listed in the Measures Group Patient Sample Criteria equals No, do not include in Eligible Population/Denominator. Stop Processing.
  - b. If Procedure as Listed in the Measures Group Patient Sample Criteria equals Yes, include in the Eligible Population/Denominator.
5. Denominator Population
  - a. Include in Eligible Population/Denominator all eligible patients who meet the Patient Sample Criteria (denominator) for the Measures Group. For each measure within the measures group each numerator option is represented by a letter which is used in the Scenarios for Reporting and Performance Algorithms at the end of this document.
6. Start Numerator Options for Measures within the Measures Group
7. Composite Quality Data Code (QDC) G8499 has been created for registries that utilize claims data. This QDC may be reported in lieu of individual QDCs when all quality clinical actions for all applicable measures within the group have been performed for this patient.
8. Measure 108
  - a. Numerator option Performance Met has an arrow pointing to G8499 Composite Quality Data Code (QDC) or Equivalent. Performance Met is represented by letter a<sup>i</sup>.
  - b. Numerator option Performance Exclusion is represented by letter b<sup>i</sup>.
  - c. Numerator option Performance Not Met is represented by letter c<sup>i</sup>.
  - d. Numerator option Not Reported is represented by letter d<sup>i</sup>.
9. Measure 128

- a. Numerator option Performance Met has an arrow pointing to G8499 Composite Quality Data Code (QDC) or Equivalent. Performance Met is represented by letter a<sup>ii</sup>.
- b. Numerator option Performance Exclusion is represented by letter b<sup>ii</sup>.
- c. Numerator option Performance Not Met is represented by letter c<sup>ii</sup>.
- d. Numerator option Not Reported is represented by letter d<sup>ii</sup>.

10. Measure 131

- a. Numerator option Performance Met has an arrow pointing to G8499 Composite Quality Data Code (QDC) or Equivalent. Performance Met is represented by letter a<sup>iii</sup>.
- b. Numerator option Performance Exclusion is represented by letter b<sup>iii</sup>.
- c. Numerator option Performance Not Met is represented by letter c<sup>iii</sup>.
- d. Numerator option Not Reported is represented by letter d<sup>iii</sup>.

11. Measure 176

- a. Numerator option Performance Met has an arrow pointing to G8499 Composite Quality Data Code (QDC) or Equivalent. Performance Met is represented by letter a<sup>iv</sup>.
- b. Numerator option Performance Exclusion is represented by letter b<sup>iv</sup>.
- c. Numerator option Performance Not Met is represented by letter c<sup>iv</sup>.
- d. Numerator option Not Reported is represented by letter d<sup>iv</sup>.

12. Measure 177

- a. Numerator option Performance Met has an arrow pointing to G8499 Composite Quality Data Code (QDC) or Equivalent. Performance Met is represented by letter a<sup>v</sup>.
- b. Numerator option Performance Not Met is represented by letter c<sup>v</sup>.
- c. Numerator option Not Reported is represented by letter d<sup>v</sup>.

13. Measure 178

- a. Numerator option Performance Met has an arrow pointing to G8499 Composite Quality Data Code (QDC) or Equivalent. Performance Met is represented by letter a<sup>vi</sup>.
- b. Numerator option Performance Not Met is represented by letter c<sup>vi</sup>.
- c. Numerator option Not Reported is represented by letter d<sup>vi</sup>.

14. Measure 179

- a. Numerator option Performance Met has an arrow pointing to G8499 Composite Quality Data Code (QDC) or Equivalent. Performance Met is represented by letter a<sup>vii</sup>.
- b. Numerator option Performance Not Met is represented by letter c<sup>vii</sup>.
- c. Numerator option Not Reported is represented by letter d<sup>vii</sup>.

15. Measure 180

- a. Numerator option Performance Met has an arrow pointing to G8499 Composite Quality Data Code (QDC) or Equivalent. Performance Met is represented by letter a<sup>viii</sup>.
- b. Numerator option Performance Exclusion is represented by letter b<sup>viii</sup>.
- c. Numerator option Performance Not Met is represented by letter c<sup>viii</sup>.
- d. Numerator option Not Reported is represented by letter d<sup>viii</sup>.

## 16. Scenarios for Reporting and Performance Algorithms

### 17. Patient X

- a. Patient X Met Measure 108 (represented by a<sup>i</sup>)
- b. Patient X Met Measure 128 (represented by a<sup>ii</sup>)
- c. Patient X Met Measure 131 (represented by a<sup>iii</sup>)
- d. Patient X Met Measure 176 (represented by a<sup>iv</sup>)
- e. Patient X Met Measure 177 (represented by a<sup>v</sup>)
- f. Patient X Met Measure 178 (represented by a<sup>vi</sup>)
- g. Patient X Met Measure 179 (represented by a<sup>vii</sup>)
- h. Patient X Met Measure 180 (represented by a<sup>viii</sup>)

### 18. Patient Y

- a. Patient Y Met Measure 108 (represented by a<sup>i</sup>)
- b. Patient Y Not Met but Reported Measure 128 (represented by c<sup>ii</sup>)
- c. Patient Y Met Measure 131 (represented by a<sup>iii</sup>)
- d. Patient Y Not Met but Reported Measure 176 (represented by c<sup>iv</sup>)
- e. Patient Y Met Measure 177 (represented by a<sup>v</sup>)
- f. Patient Y Met Measure 178 (represented by a<sup>vi</sup>)
- g. Patient Y Met Measure 179 (represented by a<sup>vii</sup>)
- h. Patient Y Exclusion Reported for Measure 180 (represented by b<sup>viii</sup>)

### 19. Patient Z

- a. Patient Z Met Measure 108 (represented by a<sup>i</sup>)
- b. Patient Z Met Measure 128 (represented by a<sup>ii</sup>)
- c. Patient Z Met Measure 131 (represented by a<sup>iii</sup>)
- d. Patient Z Met Measure 176 (represented by a<sup>iv</sup>)
- e. Patient Z did Not Report Measure 177 (represented by d<sup>v</sup>)
- f. Patient Z Met Measure 178 (represented by a<sup>vi</sup>)
- g. Patient Z Met Measure 179 (represented by a<sup>vii</sup>)
- h. Patient Z Met Measure 180 (represented by a<sup>viii</sup>)

### 20. Reporting Algorithm

- a. Reporting of all applicable measures contained in the measures group, per eligible patient, equals one
- b. Patient X Reporting equals 1 Plus Patient Y Reporting equals 1 Plus Patient Z Reporting equals 0 for a total of 2 of the Required 20 Patient Sample Reported

## 21. Performance Algorithms

### 22. Measure 108

- a. Performance Met equals 3 divided by Reported QDC for 3 eligible patients minus 0 Performance Exclusions equals 100% Performance Rate

### 23. Measure 128

- a. Performance Met equals 2 divided by Reported QDC for 3 eligible patients minus 0 Performance Exclusions equals 66.67% Performance Rate

### 24. Measure 131

- a. Performance Met equals 3 divided by Reported QDC for 3 eligible patients minus 0 Performance Exclusions equals 100% Performance Rate

25. Measure 176

- a. Performance Met equals 2 divided by Reported QDC for 3 eligible patients minus 0 Performance Exclusions equals 66.67% Performance Rate

26. Measure 177

- a. Performance Met equals 2 divided by Reported QDC for 2 eligible patients equals 100% Performance Rate

27. Measure 178

- a. Performance Met equals 3 divided by Reported QDC for 3 eligible patients equals 100% Performance Rate

28. Measure 179

- a. Performance Met equals 3 divided by Reported QDC for 3 eligible patients equals 100% Performance Rate

29. Measure 180

- a. Performance Met equals 2 divided by Reported QDC for 3 eligible patients minus 1 Performance Exclusion equals 100% Performance Rate