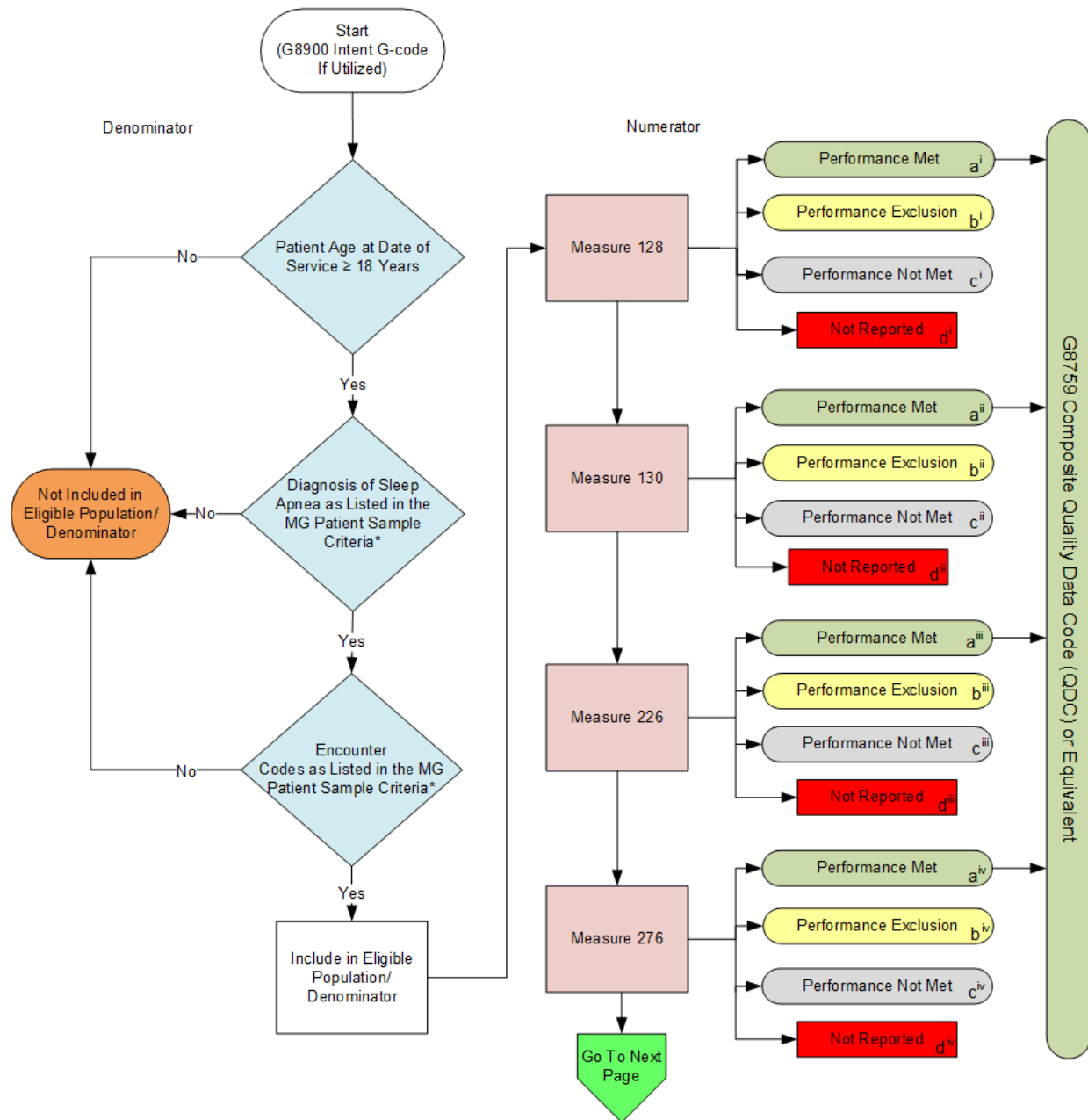


2015 Measures Group (MG) Flow Sleep Apnea

Note: For Measure numerator details, please refer to the Measures Groups Specification Manual

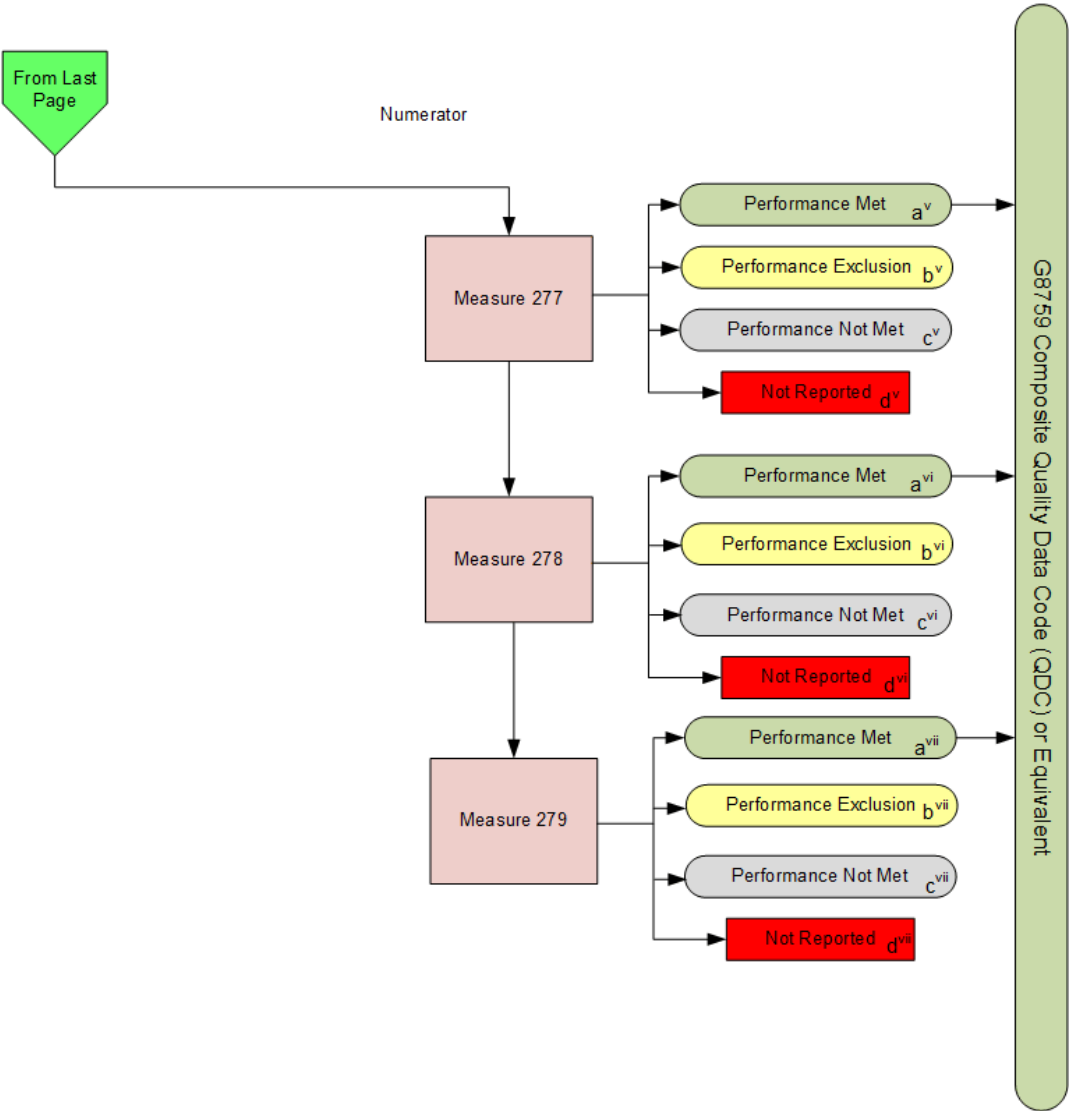


*See the posted 2015 Measures Groups Specification Manual for Patient Sample Criteria, specific coding and instructions to report this Measures Group.

2015 Measures Group (MG) Flow

Sleep Apnea

Note: For Measure numerator details, please refer to the Measures Groups Specification Manual



2015 Measures Group (MG) Flow Sleep Apnea

Scenarios for Reporting (Patient) and Performance (Measure) Algorithms:

a= Performance Met; b=Performance Exclusion; c=Performance Not Met; d=Not Reported

	<u>Measure 128</u> (i)	<u>Measure 130</u> (ii)	<u>Measure 226</u> (iii)	<u>Measure 276</u> (iv)	<u>Measure 277</u> (v)	<u>Measure 278</u> (vi)	<u>Measure 279</u> (vii)
Patient X	Met (a ⁱ)	Met (a ⁱⁱ)	Met (a ⁱⁱⁱ)	Met (a ^{iv})	Met (a ^v)	Exclusion (b ^{vi})	Met (a ^{vii})
Patient Y	Exclusion (b ⁱ)	Met (a ⁱⁱ)	Not Met (c ⁱⁱⁱ)	Met (a ^{iv})	Met (a ^v)	Not Met (c ^{vi})	Met (a ^{vii})
Patient Z	Met (a ⁱ)	Met (a ⁱⁱ)	Met (a ⁱⁱⁱ)	Not Reported (d ^{iv})	Met (a ^v)	Met (a ^{vi})	Met (a ^{vii})

Reporting Algorithm**

Patient X [aⁱ,aⁱⁱ,aⁱⁱⁱ,a^{iv},a^v,b^{vi},a^{vii}] + Patient Y [bⁱ,aⁱⁱ,cⁱⁱⁱ,a^{iv},a^v,c^{vi},a^{vii}] + Patient Z [aⁱ,aⁱⁱ,aⁱⁱⁱ,d^{iv},a^v,a^{vi},a^{vii}] = 1+1+0 = 2 of the Required 20 Patient Sample

Performance Algorithms

Measure 128

Performance Met (2) = $\frac{2}{3} = 100.00\%$
Reported QDC for eligible patient (3) - Performance Exclusion (1)

Measure 130

Performance Met (3) = $\frac{3}{3} = 100.00\%$
Reported QDC for eligible patient (3) - Performance Exclusion (0)

Measure 226

Performance Met (2) = $\frac{2}{3} = 66.67\%$
Reported QDC for eligible patient (3) - Performance Exclusion (0)

Measure 276

Performance Met (2) = $\frac{2}{2} = 100.00\%$
Reported QDC for eligible patient (2) - Performance Exclusion (0)

Measure 277

Performance Met (3) = $\frac{3}{3} = 100.00\%$
Reported QDC for eligible patient (3) - Performance Exclusion (0)

Measure 278

Performance Met (1) = $\frac{1}{3} = 50.00\%$
Reported QDC for eligible patient (3) - Performance Exclusion (1)

Measure 279

Performance Met (3) = $\frac{3}{3} = 100.00\%$
Reported QDC for eligible patient (3) - Performance Exclusion (0)

** Reporting of all measures contained in measures group, per eligible patient, equals one.

v1

2015 Measures Group (MG) Flow Sleep Apnea

Please refer to the specific section of the 2015 PQRS Measures Groups Specifications Manual to identify the specific coding and instructions to report the Sleep Apnea Measures Group including Patient Sample Criteria (denominator), individual measures, and numerator options information for use in reporting this Measures Group.

1. Start with G8900 Intent G-code if Utilized
2. Check Patient Age:
 - a. If the Age is greater than or equal to 18 years of age at Date of Service equals No, do not include in Eligible Population/Denominator. Stop Processing.
 - b. If the Age is greater than or equal to 18 years of age at Date of Service equals Yes, proceed to check Patient Diagnosis.
3. Check Patient Diagnosis:
 - a. If Diagnosis indicating Sleep Apnea as listed in the Measures Group Patient Sample Criteria equals No, do not include in Eligible Population/Denominator. Stop Processing.
 - b. If Diagnosis indicating Sleep Apnea as listed in the Measures Group Patient Sample Criteria equals Yes, proceed to check Encounter Performed.
4. Check Encounter Performed:
 - a. If Encounter as Listed in the Measures Group Patient Sample Criteria equals No, do not include in Eligible Population/Denominator. Stop Processing.
 - c. If Procedure as Listed in the Measures Group Patient Sample Criteria equals Yes, include in the Eligible Population/Denominator.
5. Denominator Population
 - a. Include in Eligible Population/Denominator all eligible patients who meet the Patient Sample Criteria (denominator) for the Measures Group. For each measure within the measures group each numerator option is represented by a letter which is used in the Scenarios for Reporting and Performance Algorithms at the end of this document.
6. Start Numerator Options for Measures within the Measures Group
7. Composite Quality Data Code (QDC) G8759 has been created for registries that utilize claims data. This QDC may be reported in lieu of individual QDCs when all quality clinical actions for all applicable measures within the group have been performed for this patient.

8. Measure 128

- a. Numerator option Performance Met has an arrow pointing to G8759 Composite Quality Data Code (QDC) or Equivalent. Performance Met is represented by letter aⁱ.
- b. Numerator option Performance Exclusion is represented by letter bⁱ.
- c. Numerator option Performance Not Met is represented by letter cⁱ.
- d. Numerator option Not Reported is represented by letter dⁱ.

9. Measure 130

- a. Numerator option Performance Met has an arrow pointing to G8759 Composite Quality Data Code (QDC) or Equivalent. Performance Met is represented by letter aⁱⁱ.
- b. Numerator option Performance Exclusion is represented by letter bⁱⁱ.
- c. Numerator option Performance Not Met is represented by letter cⁱⁱ.
- d. Numerator option Not Reported is represented by letter dⁱⁱ.

10. Measure 226

- a. Numerator option Performance Met has an arrow pointing to G8759 Composite Quality Data Code (QDC) or Equivalent. Performance Met is represented by letter aⁱⁱⁱ.
- b. Numerator option Performance Exclusion is represented by letter bⁱⁱⁱ.
- c. Numerator option Performance Not Met is represented by letter cⁱⁱⁱ.
- d. Numerator option Not Reported is represented by letter dⁱⁱⁱ.

11. Measure 276

- a. Numerator option Performance Met has an arrow pointing to G8759 Composite Quality Data Code (QDC) or Equivalent. Performance Met is represented by letter a^{iv}.
- b. Numerator option Performance Exclusion is represented by letter b^{iv}.
- c. Numerator option Performance Not Met is represented by letter c^{iv}.
- d. Numerator option Not Reported is represented by letter d^{iv}.

12. Measure 277

- a. Numerator option Performance Met has an arrow pointing to G8759 Composite Quality Data Code (QDC) or Equivalent. Performance Met is represented by letter a^v.
- b. Numerator option Performance Exclusion is represented by letter b^v.
- c. Numerator option Performance Not Met is represented by letter c^v.
- d. Numerator option Not Reported is represented by letter d^v.

13. Measure 278

- a. Numerator option Performance Met has an arrow pointing to G8759 Composite Quality Data Code (QDC) or Equivalent. Performance Met is represented by letter a^{vi}.
- b. Numerator option Performance Exclusion is represented by letter b^{vi}.
- c. Numerator option Performance Not Met is represented by letter c^{vi}.
- d. Numerator option Not Reported is represented by letter d^{vi}.

14. Measure 279

- a. Numerator option Performance Met has an arrow pointing to G8759 Composite Quality Data Code (QDC) or Equivalent. Performance Met is represented by letter a^{vii}.
- b. Numerator option Performance Exclusion is represented by letter b^{vii}.
- c. Numerator option Performance Not Met is represented by letter c^{vii}.
- d. Numerator option Not Reported is represented by letter d^{vii}.

15. Scenarios for Reporting and Performance Algorithms

16. Patient X

- a. Patient X Met Measure 128 (represented by aⁱ)
- b. Patient X Met Measure 130 (represented by aⁱⁱ)
- c. Patient X Met Measure 226 (represented by aⁱⁱⁱ)
- d. Patient X Met Measure 276 (represented by a^{iv})
- e. Patient X Met Measure 277 (represented by a^v)
- f. Patient X Exclusion Reported for Measure 278 (represented by b^{vi})
- g. Patient X Met Measure 279 (represented by a^{vii})

17. Patient Y

- a. Patient Y Exclusion Reported for Measure 128 (represented by bⁱ)
- b. Patient Y Met Measure 130 (represented by aⁱⁱ)
- c. Patient Y Not Met but Reported Measure 226 (represented by cⁱⁱⁱ)
- d. Patient Y Met Measure 276 (represented by a^{iv})
- e. Patient Y Met Measure 277 (represented by a^v)
- f. Patient Y Not Met but Reported Measure 278 (represented by c^{vi})
- g. Patient Y Met Measure 279 (represented by a^{vii})

18. Patient Z

- a. Patient Z Met Measure 128 (represented by aⁱ)
- b. Patient Z Met Measure 130 (represented by aⁱⁱ)
- c. Patient Z Met Measure 226 (represented by aⁱⁱⁱ)
- d. Patient Z did Not Report Measure 276 (represented by d^{iv})
- e. Patient Z Met Measure 277 (represented by a^v)
- f. Patient Z Met Measure 278 (represented by a^{vi})
- g. Patient Z Met Measure 279 (represented by a^{vii})

19. Reporting Algorithm

- a. Reporting of all applicable measures contained in the measures group, per eligible patient, equals one
- b. Patient X Reporting equals 1 Plus Patient Y Reporting equals 1 Plus Patient Z Reporting equals 0 for a total of 2 of the Required 20 Patient Sample Reported

20. Performance Algorithms

21. Measure 128

- a. Performance Met equals 2 divided by Reported QDC for 3 eligible patients minus 1 Performance Exclusions equals 100% Performance Rate

22. Measure 130

- a. Performance Met equals 3 divided by Reported QDC for 3 eligible patients minus 0 Performance Exclusions equals 100% Performance Rate

23. Measure 226

- a. Performance Met equals 2 divided by Reported QDC for 3 eligible patients minus 0 Performance Exclusions equals 66.67% Performance Rate

24. Measure 276

- a. Performance Met equals 2 divided by Reported QDC for 2 eligible patients minus 0 Performance Exclusions equals 100% Performance Rate

25. Measure 277

- a. Performance Met equals 3 divided by Reported QDC for 3 eligible patients minus 0 Performance Exclusions equals 100% Performance Rate

26. Measure 278

- a. Performance Met equals 1 divided by Reported QDC for 3 eligible patients minus 1 Performance Exclusions equals 50% Performance Rate

27. Measure 279

- a. Performance Met equals 3 divided by Reported QDC for 3 eligible patients minus 0 Performance Exclusions equals 100% Performance Rate