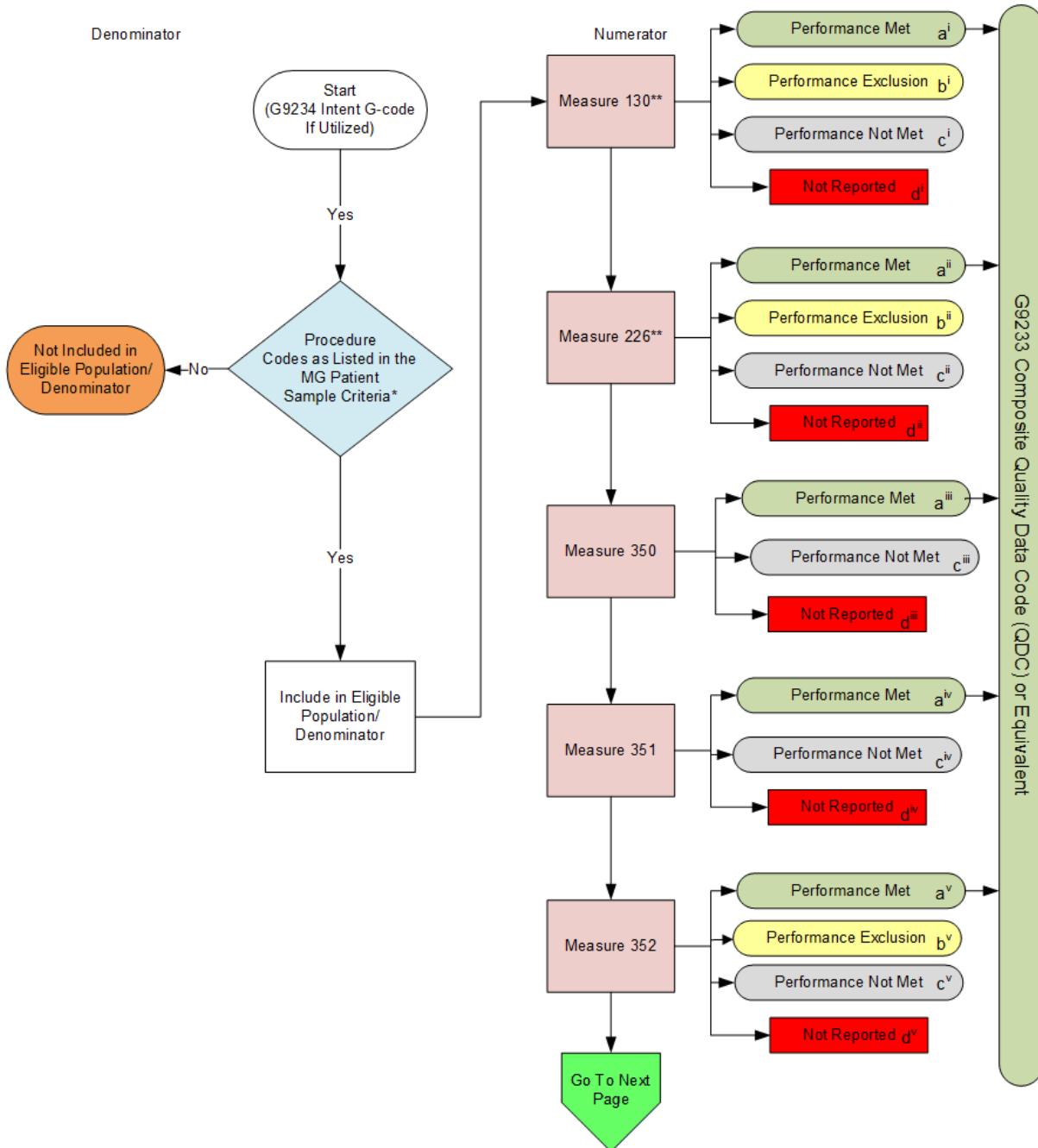


2015 Measures Group (MG) Flow Total Knee Replacement (TKR)

Note: For Measure numerator details, please refer to the Measures Groups Specification Manual



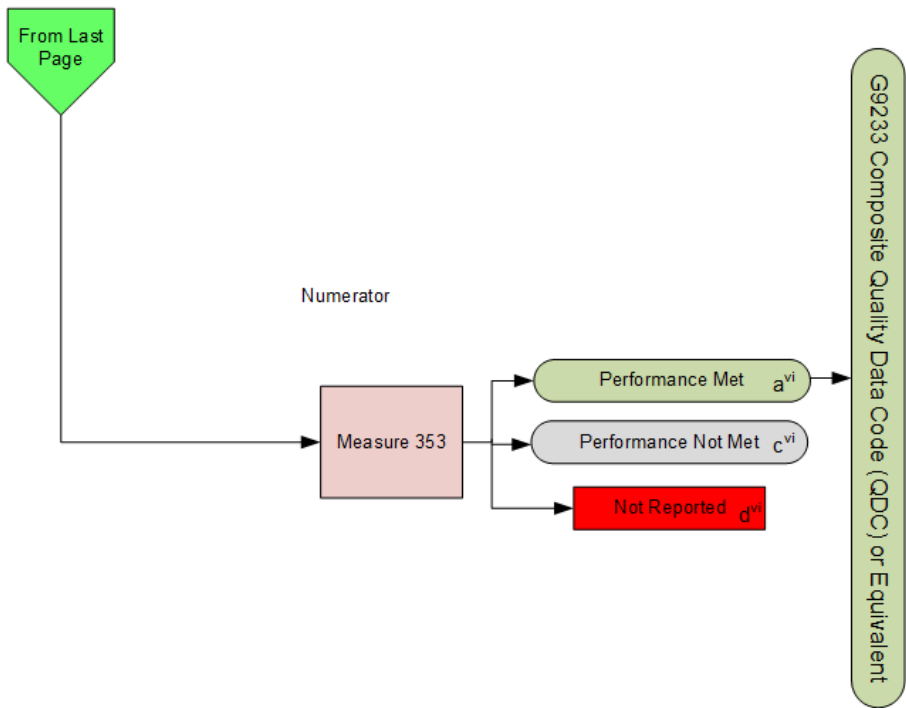
*See the posted 2015 Measures Groups Specification Manual for Patient Sample Criteria, specific coding and instructions to report this Measures Group.

**Measures #130 and #226 need only be reported on patients 18 years and older. All remaining measures are to be reported regardless of patient age.

v1

2015 Measures Group (MG) Flow Total Knee Replacement (TKR)

Note: For Measure numerator details, please refer to the Measures Groups Specification Manual



2015 Measures Group (MG) Flow Total Knee Replacement (TKR)

Scenarios for Reporting (Patient/Procedure) and Performance (Measure) Algorithms:

a= Performance Met; b=Performance Exclusion; c=Performance Not Met; d=Not Reported; e=Not Applicable

	<u>Measure 130**</u> (i)	<u>Measure 226**</u> (ii)	<u>Measure 350</u> (iii)	<u>Measure 351</u> (iv)	<u>Measure 352</u> (v)	<u>Measure 353</u> (vi)
Patient X Patient Age 65	Met (a ⁱ)	Met (a ⁱⁱ)	Met (a ⁱⁱⁱ)	Met (a ^{iv})	Met (a ^v)	Met (a ^{vi})
Patient Y Patient Age 17	Not Applicable (e ⁱ)	Not Applicable (e ⁱⁱ)	Not Met (c ⁱⁱⁱ)	Met (a ^{iv})	Exclusion (b ^v)	Met (a ^{vi})
Patient Z Patient Age 72	Met (a ⁱ)	Met (a ⁱⁱ)	Met (a ⁱⁱⁱ)	Not Reported (d ^{iv})	Met (a ^v)	Met (a ^{vi})

Reporting Algorithm***

Patient X [aⁱ,aⁱⁱ,aⁱⁱⁱ,a^{iv},a^v,a^{vi}] + Patient Y [eⁱ,eⁱⁱ,cⁱⁱⁱ,a^{iv},b^v,a^{vi}] + Patient Z [aⁱ,aⁱⁱ,aⁱⁱⁱ,d^{iv},a^v,a^{vi}] = 1+1+0 = 2 of the Required 20 Patient Sample Reported

Performance Algorithms

Measure 130

Performance Met (2) = $\frac{2}{2}$ = 100.00%
Reported QDC for eligible patient (2) – Performance Exclusion (0)

Measure 226

Performance Met (2) = $\frac{2}{2}$ = 100.00%
Reported QDC for eligible patient (2) – Performance Exclusion (0)

Measure 350

Performance Met (2) = $\frac{2}{3}$ = 66.67%
Reported QDC for eligible patient (3)

Measure 351

Performance Met (2) = $\frac{2}{2}$ = 100.00%
Reported QDC for eligible patient (2)

Measure 352

Performance Met (2) = $\frac{2}{2}$ = 100.00%
Reported QDC for eligible patient (3) – Performance Exclusion (1)

Measure 353

Performance Met (3) = $\frac{3}{3}$ = 100.00%
Reported QDC for eligible patient (3)

**Measures #130 and #226 need only be reported on patients 18 years and older. All remaining measures are to be reported regardless of patient age.

***Reporting of all applicable measures contained in measures group, per eligible patient, equals one.

v1

2015 Measures Group (MG) Flow Total Knee Replacement (TKR)

Please refer to the specific section of the 2015 PQRS Measures Groups Specifications Manual to identify specific coding and instructions to report the TKR Measures Group Patient Sample Criteria (denominator), individual measures, and numerator options information for use in reporting this Measures Group.

1. Start with G9234 Intent G-code if Utilized
2. Check Procedure Performed:
 - a. If Procedure as Listed in the Measures Group Patient Sample Criteria equals No, do not include in Eligible Population/Denominator. Stop Processing.
 - b. If Procedure as Listed in the Measures Group Patient Sample Criteria equals Yes, include in the Eligible Population/Denominator.
3. Denominator Population
 - a. Include in Eligible Population/Denominator all eligible patients who meet the Patient Sample Criteria (denominator) for the Measures Group. For each measure within the measures group each numerator option is represented by a letter which is used in the Scenarios for Reporting and Performance Algorithms at the end of this document.
4. Start Numerator Options for Measures within the Measures Group
5. Composite Quality Data Code (QDC) G9233 has been created for registries that utilize claims data. This QDC may be reported in lieu of individual QDCs when all quality clinical actions for all applicable measures within the group have been performed for this patient.
6. Measure 130
 - a. Measure #130 only needs to be reported on patients 18 years and older. When measure #130 is Not Applicable it is represented by letter eⁱ in the Scenarios for Reporting Algorithms.
 - b. Numerator option Performance Met has an arrow pointing to G9233 Composite Quality Data Code (QDC) or Equivalent. Performance Met is represented by letter aⁱ.
 - c. Numerator option Performance Exclusion is represented by letter bⁱ.
 - d. Numerator option Performance Not Met is represented by letter cⁱ.
 - e. Numerator option Not Reported is represented by letter dⁱ.
7. Measure 226
 - a. Measure #226 only needs to be reported on patients 18 years and older. When measure #226 is Not Applicable it is represented by letter eⁱⁱ in the Scenarios for Reporting Algorithms.
 - b. Numerator option Performance Met has an arrow pointing to G9233 Composite Quality Data Code (QDC) or Equivalent. Performance Met is represented by letter aⁱⁱ.
 - c. Numerator option Performance Exclusion is represented by letter bⁱⁱ.
 - d. Numerator option Performance Not Met is represented by letter cⁱⁱ.
 - e. Numerator option Not Reported is represented by letter dⁱⁱ.

8. Measure 350

- a. Numerator option Performance Met has an arrow pointing to G9233 Composite Quality Data Code (QDC) or Equivalent. Performance Met is represented by letter aⁱⁱⁱ.
- b. Numerator option Performance Not Met is represented by letter cⁱⁱⁱ.
- c. Numerator option Not Reported is represented by letter dⁱⁱⁱ.

9. Measure 351

- a. Numerator option Performance Met has an arrow pointing to G9233 Composite Quality Data Code (QDC) or Equivalent. Performance Met is represented by letter a^{iv}.
- b. Numerator option Performance Not Met is represented by letter c^{iv}.
- c. Numerator option Not Reported is represented by letter d^{iv}.

10. Measure 352

- a. Numerator option Performance Met has an arrow pointing to G9233 Composite Quality Data Code (QDC) or Equivalent. Performance Met is represented by letter a^v.
- b. Numerator option Performance Exclusion is represented by letter b^v.
- c. Numerator option Performance Not Met is represented by letter c^v.
- d. Numerator option Not Reported is represented by letter d^v.

11. Measure 353

- a. Numerator option Performance Met has an arrow pointing to G9233 Composite Quality Data Code (QDC) or Equivalent. Performance Met is represented by letter a^{vi}.
- b. Numerator option Performance Not Met is represented by letter c^{vi}.
- c. Numerator option Not Reported is represented by letter d^{vi}.

12. Scenarios for Reporting and Performance Algorithms

13. Patient X Age 65

- a. Patient X Met Measure 130 (represented by aⁱ)
- b. Patient X Met Measure 226 (represented by aⁱⁱ)
- c. Patient X Met Measure 350 (represented by aⁱⁱⁱ)
- d. Patient X Met Measure 351 (represented by a^{iv})
- e. Patient X Met Measure 352 (represented by a^v)
- f. Patient X Met Measure 353 (represented by a^{vi})

14. Patient Y Age 17

- a. Patient Y Not Applicable for Measure 130 (represented by eⁱ)
- b. Patient Y Not Applicable for Measure 226 (represented by eⁱⁱ)
- c. Patient Y Not Met but Reported Measure 350 (represented by cⁱⁱⁱ)
- d. Patient Y Met Measure 351 (represented by a^{iv})
- e. Patient Y Exclusion Reported for Measure 352 (represented by b^v)
- f. Patient Y Met Measure 353 (represented by a^{vi})

15. Patient Z Age 72

- a. Patient Z Met Measure 130 (represented by aⁱ)
- b. Patient Z Met Measure 226 (represented by aⁱⁱ)
- c. Patient Z Met Measure 350 (represented by aⁱⁱⁱ)
- d. Patient Z did Not Report Measure 351 (represented by d^{iv})

- e. Patient Z Met Measure 352 (represented by a^v)
- f. Patient Z Met Measure 353 (represented by a^{vi})

16. Reporting Algorithm

- a. Reporting of all applicable measures contained in the measures group, per eligible patient, equals one
- b. Patient X Reporting equals 1 Plus Patient Y Reporting equals 1 Plus Patient Z Reporting equals 0 for a total of 2 of the Required 20 Patient Sample Reported

17. Performance Algorithms

18. Measure 130

- a. Performance Met equals 2 divided by Reported QDC for 2 eligible patients minus 0 Performance Exclusions equals 100% Performance Rate

19. Measure 226

- a. Performance Met equals 2 divided by Reported QDC for 2 eligible patients minus 0 Performance Exclusions equals 100% Performance Rate

20. Measure 350

- a. Performance Met equals 2 divided by Reported QDC for 3 eligible patients equals 66.67% Performance Rate

21. Measure 351

- a. Performance Met equals 2 divided by Reported QDC for 2 eligible patients equals 100% Performance Rate

22. Measure 352

- a. Performance Met equals 2 divided by Reported QDC for 3 eligible patients minus 1 Performance Exclusions equals 100% Performance Rate

23. Measure 353

- a. Performance Met equals 3 divided by Reported QDC for 3 eligible patients equals 100% Performance Rate