

ICD-10

Effective October 1, 2015

See cms.gov/ICD10 for more information about ICD-10 and how you can assess your implementation and maintain your progress.

Track and Improve Your Progress

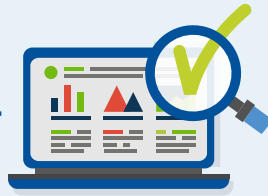
1

ASSESS Your Progress

To start, identify key performance indicators, or KPIs



Establish a baseline for each KPI



Compare baseline and post-transition KPIs



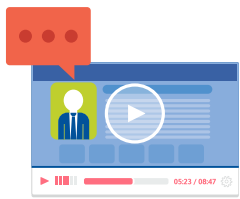
KPI
(Sample)

DAYS TO FINAL BILL = number of days from time of service until provider generates and submits claim

2

ADDRESS Your Findings

Develop ways to gather and address feedback



Verify all your system upgrades are installed



Check clinical documentation and code selection



Work with payers to resolve any billing issues



- See our [contact list for fee-for-service Medicare or Medicaid issues](#)

- Contact your payer, clearinghouse, or billing service for other issues

3

MAINTAIN Your Progress

Keep your coding tools and systems up to date

- Like ICD-9, ICD-10 is updated annually on October 1
- The [ICD-10 Coordination and Maintenance Committee](#) makes the updates with public input



Review the [ICD-10 General Coding Guidelines](#) regularly

- Hospitals should also review the [General Coding Guidelines for ICD-10 inpatient procedure coding](#)

