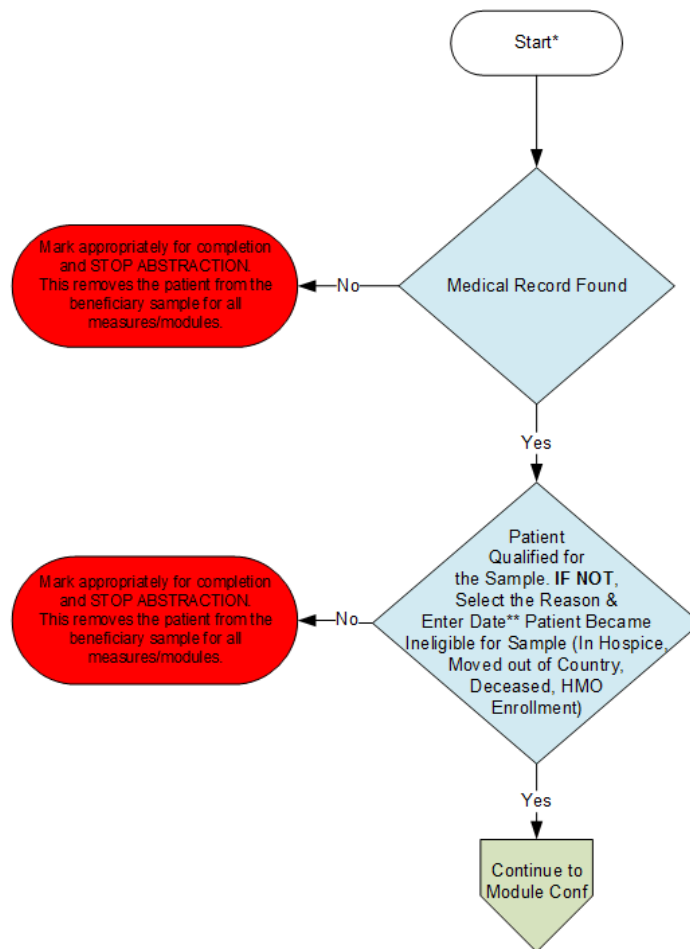


Patient Confirmation Flow

For 2015, confirmation of the "Medical Record Found", or indicating the patient is "Not Qualified for Sample" with a reason of "In Hospice", "Moved out of Country", "Deceased", or "HMO Enrollment", will only need to be done **once** per patient. Refer to the Data Guidance for further instructions.

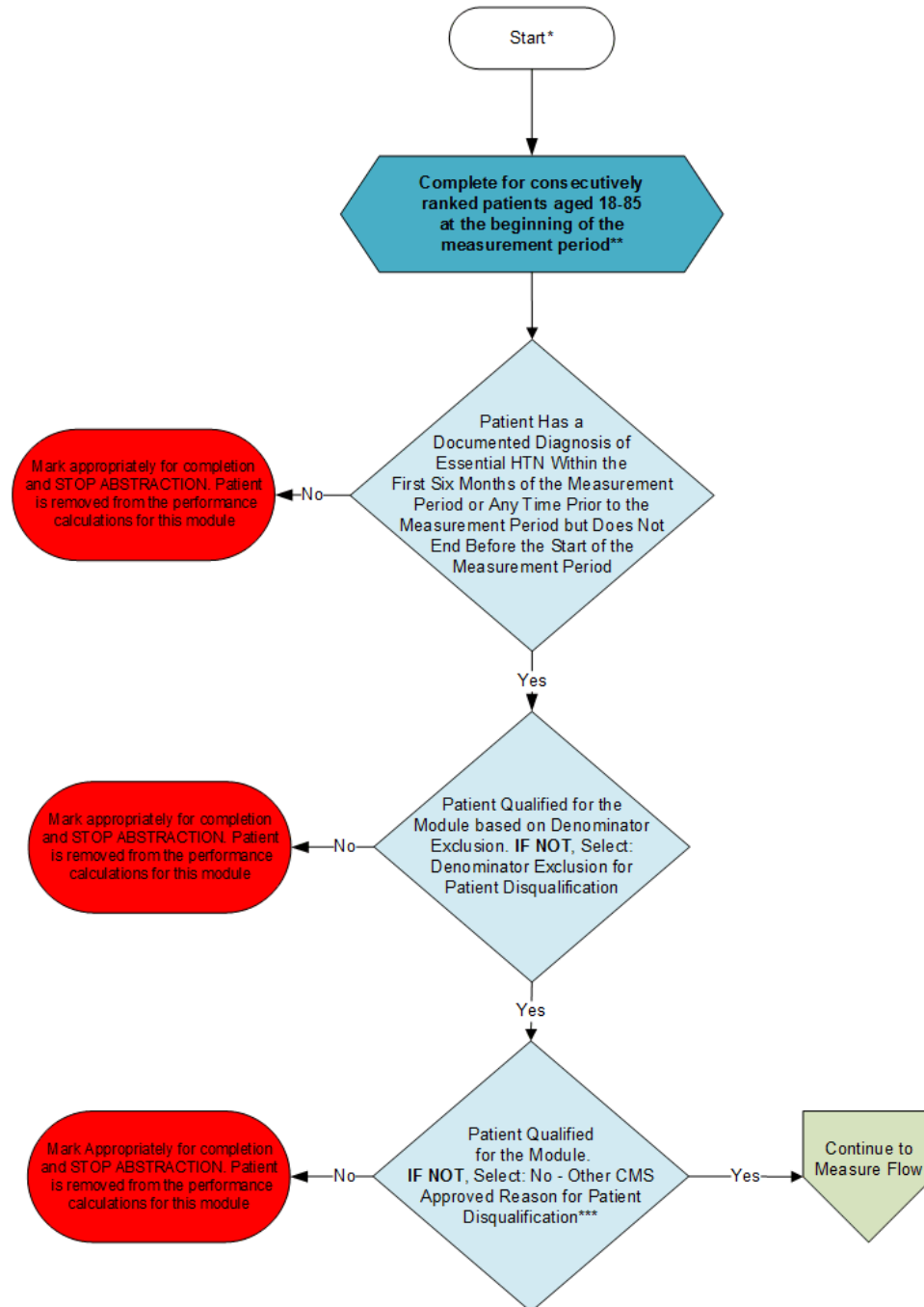


*See Data Guidance for further instructions to report this module

**If date is unknown, enter 12/31/15

Module Confirmation Flow for HTN Module

For 2015, module or measure specific reasons a patient is "Not Confirmed" or excluded for "Denominator Exclusion" or "Other CMS Approved Reason" will need to be done for each measure/module where the patient appears. Refer to the Data Guidance for further instructions.



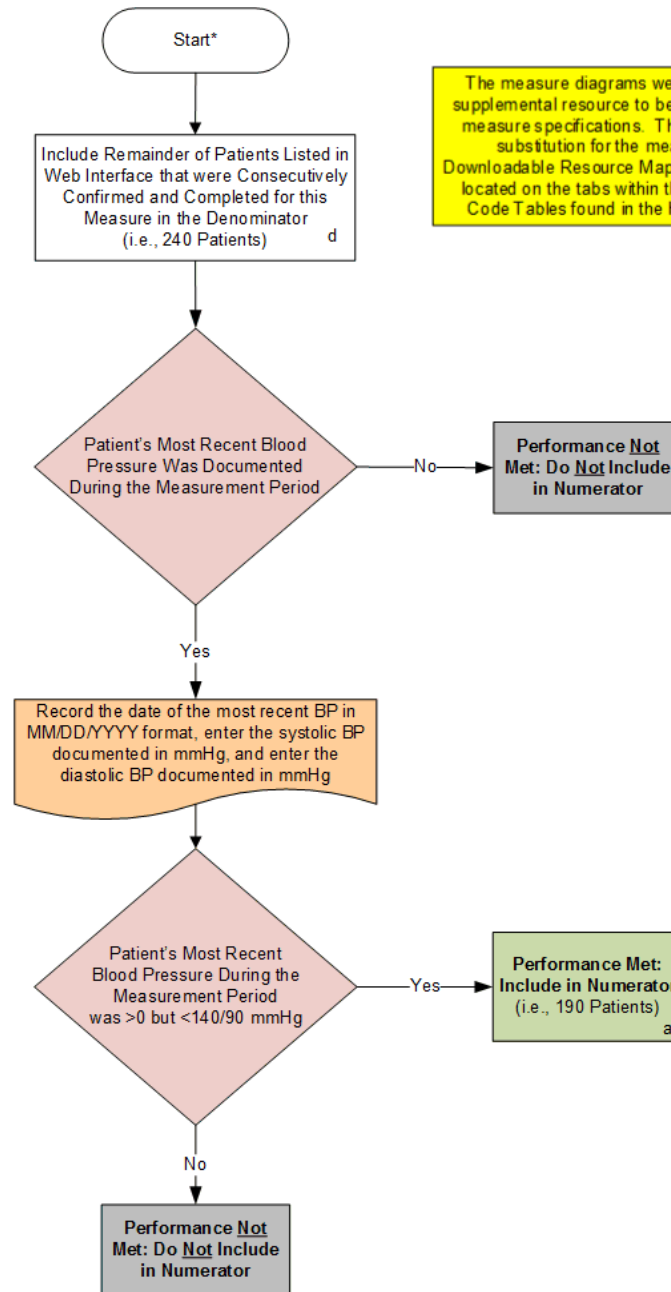
*See Data Guidance for further instructions to report this module

**Further information regarding patient selection for specific disease modules and patient care measures can be found in the Web Interface Sampling Methodology Document. For patients who have the incorrect date of birth listed, a change of the patient date of birth by the abstractor may result in the patient no longer qualifying for the HTN module. If this is the case, the system will automatically remove the patient from the measure requirements.

****Other CMS Approved Reason" is requested and approved by opening a Help Desk Ticket at Qnetsupport@hcqis.org

v3.0

2015 GPRO HTN-2 (NQF 0018): Controlling High Blood Pressure
 This flow applies to GPRO Web Interface



The measure diagrams were developed by CMS as a supplemental resource to be used in conjunction with the measure specifications. They should not be used as a substitution for the measure specification. For Downloadable Resource Mapping, use the Variable Names located on the tabs within the HTN Data Guidance and Code Tables found in the HTN Supporting Document

Performance Rate=

Performance Met (a=190 Patients) _____
 Eligible Denominator (d=240 Patients) =

SAMPLE CALCULATION:

$\frac{190 \text{ Patients}}{240 \text{ Patients}} = 79.17\%$

CALCULATION MAY CHANGE PENDING PERFORMANCE MET ABOVE

*See Data Guidance for further instructions to report this measure

Patient Confirmation Flow

For 2015, confirmation of the “Medical Record Found”, or indicating the patient is “Not Qualified for Sample” with a reason of “In Hospice”, “Moved out of Country”, “Deceased”, or “HMO Enrollment”, will only need to be done **once** per patient. Refer to the Data Guidance for further instructions.

1. Start Patient Confirmation Flow.
2. Check to determine if Medical Record can be found.
 - a. If no, Medical Record not found, mark appropriately for completion and stop abstraction. This removes the patient from the beneficiary sample for all measures/modules. Stop processing.
 - b. If yes, Medical Record found, continue processing.
3. Check to determine if Patient Qualified for the sample.
 - a. If no, the patient does not qualify for the sample, select the reason why and enter the date (if date is unknown, enter 12/31/2015) the patient became ineligible for sample. For example; In Hospice, Moved out of Country, Deceased, HMO Enrollment. Mark appropriately for completion and stop abstraction. This removes the patient from the beneficiary sample for all measures/modules. Stop processing.
 - b. If yes, the patient does qualify for the sample; continue to the Module Confirmation Flow for HTN Module.

Module Confirmation Flow for HTN Module

For 2015, module or measure specific reasons a patient is “Not Confirmed” or excluded for “Denominator Exclusion” or “Other CMS Approved Reason” will need to be done for each measure/module where the patient appears. Refer to the Data Guidance for further instructions.

1. Start Module Confirmation Flow for HTN Module. Complete for consecutively ranked patients aged 18 through 85 years at the beginning of the measurement period. Further information regarding patient selection for specific disease modules and patient care measures can be found in the Web Interface Sampling Methodology Document. For patients who have the incorrect date of birth listed, a change of the patient date of birth by the abstractor may result in the patient no longer qualifying for the HTN module. If this is the case, the system will automatically remove the patient from the measure requirements.
2. Check to determine if the patient has a documented diagnosis of essential HTN within the first six months of the measurement period or any time prior to the measurement period but does not end before the start of the measurement period.
 - a. If no, the patient does not have a documented diagnosis of essential HTN within the first six months of the measurement period or any time prior to the measurement period, mark appropriately for completion and stop abstraction. Patient is removed from the performance calculations for this module. Stop processing.
 - b. If yes, the patient does have a documented diagnosis of essential HTN within the first six months of the measurement period or any time prior to the measurement period but does not end before the start of the measurement period, continue processing.
3. Check to determine if the patient qualifies for the module (Denominator Exclusion).
 - a. If no, the patient does not qualify for the module select: Denominator Exclusion for patient disqualification. Mark appropriately for completion and stop abstraction. Patient is removed from the performance calculations for this module. Stop processing.
 - b. If yes, the patient does qualify for the module, continue processing.
4. Check to determine if the patient qualifies for the module (Other CMS Approved Reason).
 - a. If no, the patient does not qualify for the module select: No – Other CMS Approved Reason for patient disqualification. Mark appropriately for completion and stop abstraction. Patient is removed from the performance calculations for this module. “Other CMS Approved Reason” is requested and approved by opening a Help Desk Ticket at Qnetsupport@hcqis.org. Stop processing.
 - b. If yes, the patient does qualify for the module, continue to HTN-2 measure flow.

2015 GPRO-HTN-2 (NQF 0018): Controlling High Blood Pressure

This flow applies to GPRO Web Interface

The measure diagrams were developed by CMS as a supplemental resource to be used in conjunction with the measure specifications. They should not be used as a substitution for the measure specifications. For Downloadable Resource Mapping, use the Variable Names located on the tabs within the HTN Data Guidance and Code Tables found in the HTN Supporting Document.

1. Start processing 2015 GPRO HTN-2 (NQF 0018) Flow for the patients that qualified for sample in the Patient Confirmation Flow and the Module Confirmation Flow for HTN Module. Note: Include remainder of patients listed in the Web Interface that were consecutively confirmed and completed for this measure in the denominator. For the sample calculation in the flow these patients would fall into the 'd' category (eligible denominator, i.e. 240 patients).
2. Check to determine if the patient's most recent blood pressure was documented during the measurement period.
 - a. If no, the patient's most recent blood pressure was not documented during the measurement period, performance is not met and the patient should not be included in the numerator. Stop processing.
 - b. If yes, the patient's most recent blood pressure was documented during the measurement period, record the date of the most recent BP in MM/DD/YYYY format, enter the systolic BP documented in mmHg, and enter the diastolic BP documented in mmHg. Continue processing.
3. Check to determine if the patient's most recent blood pressure during the measurement period was greater than zero but less than 140 over 90 mmHg.
 - a. If no, the patient's most recent blood pressure during the measurement period was not greater than zero or less than 140 over 90 mmHg, performance is not met and the patient should not be included in the numerator. Stop processing.
 - b. If yes, the patient's most recent blood pressure during the measurement period was greater than zero but less than 140 over 90 mmHg, performance is met and the patient will be included in the numerator. For the sample calculation in the flow these patients would fall into the 'a' category (numerator, i.e. 190 patients). Stop processing.

Sample Calculation

Performance Rate Equals

Performance Met is category 'a' in the measure flow (190 patients)

Eligible Denominator is category 'd' in measure flow (240 patients)

190 (Performance Met) divided by 240 (Eligible Denominator) equals a performance rate of 79.17 percent

Calculation May Change Pending Performance Met