



mln call

A MEDICARE LEARNING NETWORK® (MLN) EVENT

Medicare Diabetes Prevention Program Supplier Enrollment

June 20, 2018

Presenter:

Carlye Burd, MS, MPH



Disclaimer

This presentation was current at the time it was published or uploaded onto the web. Medicare policy changes frequently so links to the source documents have been provided within the document for your reference.

This presentation was prepared as a service to the public and is not intended to grant rights or impose obligations. This presentation may contain references or links to statutes, regulations, or other policy materials. The information provided is only intended to be a general summary. It is not intended to take the place of either the written law or regulations. We encourage readers to review the specific statutes, regulations, and other interpretive materials for a full and accurate statement of their contents.



Agenda

This presentation will focus on MDPP enrollment process and review helpful resources

- Overview of the Medicare Diabetes Prevention Program (MDPP)
- Steps to Enroll as an MDPP Supplier
- Resources on enrolling as an MDPP Supplier
- Question and Answer Session

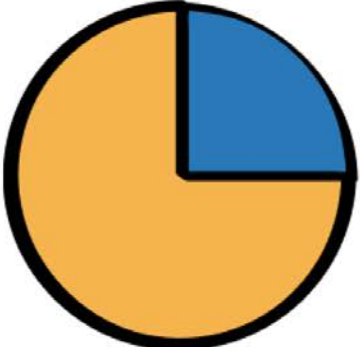


The Problem

25%

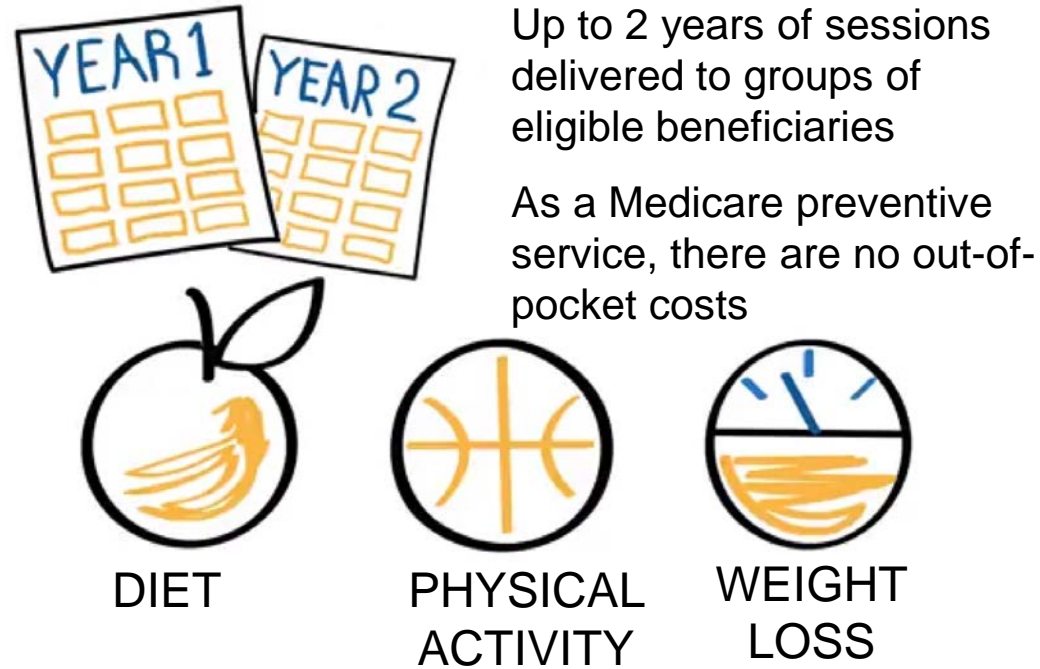
Americans 65 and older with type 2 diabetes

Care for these individuals costs Medicare about **\$104^B** each year, and is growing



Solution: The Medicare Diabetes Prevention Program

Medicare pays organizations, called MDPP suppliers, to furnish a group-based intervention to at-risk Medicare beneficiaries, using a CDC-approved National Diabetes Prevention Program curriculum.



Coaches furnish MDPP services on behalf of MDPP suppliers

MDPP suppliers' primary goal is to help Medicare beneficiaries achieve at least 5% weight loss



Inter-Agency Coordination

CMS and CDC each have unique roles and responsibilities with respect to MDPP services.



Payment, Enrollment, and Oversight Arm

- MDPP suppliers receive payment from CMS and must meet and remain compliant with requirements established by Medicare

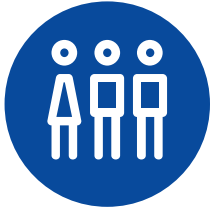
Quality Assurance Arm

- MDPP suppliers must maintain CDC recognition and follow CDC quality standards, including use of CDC-approved curriculum



Beneficiary Eligibility Criteria

Specific criteria determine Medicare beneficiary eligibility throughout the MDPP services period



Beneficiary Eligibility Requirements

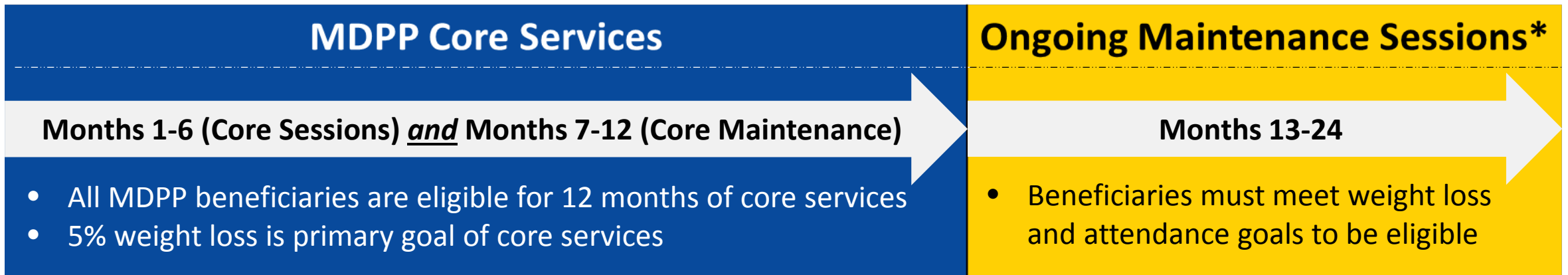
Medicare beneficiaries are eligible for MDPP services if they meet the following criteria:

- Enrolled in Original Medicare (Part B) or Medicare Advantage (Part C)
- Body Mass Index (BMI) of at least 25 (23 if self-identified as Asian) on the date of the first core session
- Meet 1 of 3 blood test requirements within the 12 months prior to attending the first core session:
 1. A hemoglobin A1c test with a value between 5.7% and 6.4%, or
 2. A fasting plasma glucose of 110-125 mg/dL, or
 3. A 2-hour plasma glucose of 140-199 mg/dL (oral glucose tolerance test)
- No previous diagnosis of diabetes prior to the date of the first core session (with exception of gestational diabetes)
- Do not have end-stage renal disease (ESRD)
- Has not previously received MDPP services



A Glance at What is Covered

The first year of MDPP core services includes six months of weekly core sessions followed by six months of monthly maintenance sessions; the second year is contingent upon beneficiary performance and consists of monthly maintenance sessions.



- Follows a CDC-approved curriculum
 - No beneficiary copay
 - No referral required



Better Outcomes, Higher Incentives

The healthier beneficiaries become, the more suppliers earn.

Payments are made based on beneficiary attendance *and* beneficiary weight loss

| Year 1 Payment Scenarios* | | |
|-----------------------------------|--|--------------|
| Attendance | Weight Loss (WL) | Payment |
| 1 Core Session | N/A | \$25 |
| 4 Core Sessions | Without 5% WL | \$75 |
| 4 Core Sessions | With 5% WL | \$235 |
| Full (9 Core, 4 Core Maintenance) | 5% WL in mos. 10 – 12 | \$400 |
| Full (9 Core, 4 Core Maintenance) | 5% WL (mos. 0 – 6) & maintains WL in mos. 7-12 | \$445 |

**Note: in Year 2, suppliers can also receive up to 4 payments of \$50 (total potential of \$200) per beneficiary, assuming ongoing maintenance session attendance and maintenance of 5% weight loss; the maximum payment per beneficiary is \$670 over 2 years*



MDPP Supplier Requirements and Enrollment

MDPP suppliers must adhere to the following requirements to establish and maintain enrollment.

- **Recognition:** *Potential MDPP suppliers must have CDC Preliminary or Full Recognition* in order to enroll. Organizations with pending recognition are not eligible*
- **Obtaining NPI:** *An NPI can be obtained using the National Plan and Provider Enumeration System*
- **Enrollment Options:** *Suppliers can enroll online using the Provider Enrollment Chain and Ownership System (PECOS) OR submit paper form (CMS-20134)*
- **Current Medicare Providers:** *Organizations already enrolled in Medicare must re-enroll to become MDPP suppliers*
- **Maintaining Enrollment:** *MDPP suppliers must remain in compliance with recognition requirements, Medicare provider requirements, and MDPP supplier standards*

**Based on the final 2018 CDC Diabetes Prevention Recognition Program Standards.*



Becoming an MDPP Supplier

Organizations must meet key requirements and complete an application to become MDPP suppliers.

1. Gain CDC Recognition



- Organizations must have **either CDC full or preliminary recognition**
- Visit the [CDC website](#) to learn more about gaining recognition

2. Enroll as an MDPP supplier

- Enroll using the online [PECOS application](#) or the [CMS-20134 form](#)



3. Furnish MDPP Services

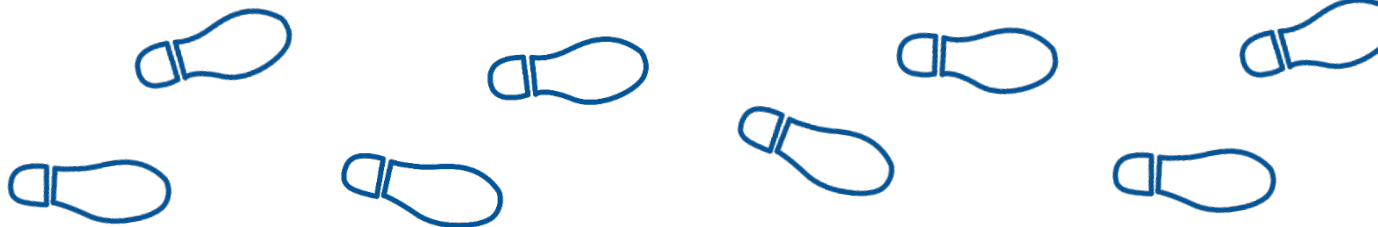
- MDPP services must be **furnished to eligible MDPP beneficiaries** by an enrolled MDPP supplier



4. Submit Claims to Medicare



- Suppliers will submit claims to their **Medicare Administrative Contractor (MAC)**, or when applicable, submit encounter data to a **Medicare Advantage organization**



MDPP Supplier Resources: Enrollment Fact Sheet

Use the Enrollment Fact Sheet to learn the steps to take to enroll as an MDPP supplier

**Medicare Diabetes Prevention Program:
Preparing to Enroll as an MDPP Supplier**

Eligible organizations may enroll to be a Medicare Diabetes Prevention Program (MDPP) supplier in January 2018. Your organization may enroll as an MDPP supplier if it meets certain criteria and applicable Medicare enrollment requirements (see 81 FR 80170). You may take the following steps to prepare for enrollment.

Take steps now to prepare to enroll as an MDPP supplier

| You must complete the following <i>required</i> steps before submitting enrollment information: | Prior to enrollment, it may be helpful if you: |
|---|---|
| 1 Create an Identity and Access (I&A) Account (for online applications only) | 2 Learn how to submit enrollment information through the Provider Enrollment Chain and Ownership System (PECOS) |
| 2 Obtain a National Provider Identifier (NPI) | 3 Learn about Medicare Administrative Contractors (MACs), the contractors who process Medicare enrollment information and claims |
| | 4 Check out available resources and help desks |

Additional details, *Key Facts* and *Helpful Resources* for each step are outlined below.

1 **Get Started: Create an I&A Account for Online Applications**
For online applications, create one account with the I&A Management System. Your I&A account allows you to access the CMS systems you will need to enroll as an MDPP supplier.

Key Facts about the I&A Management System

- Your I&A account allows you to manage staff and give others access to your enrollment information.
- Your account connects you to important CMS systems relevant to MDPP suppliers, including the National Plan and Provider Enumeration System (NPPES) and PECOS.
- I&A accounts are only required for online enrollment applications. If you enroll using the paper-based form, you will not need to create an I&A account.

Helpful Resource

- [I&A Management System Website](#)

CMS
CENTERS FOR MEDICARE & MEDICAID SERVICES

1 The Centers for Medicare and Medicaid Services (CMS) finalized this decision in the Calendar Year 2017 Physician Fee Schedule (CY 2017 PFS).

What is the Enrollment Fact Sheet?

A 2-page document that highlights the necessary steps to prepare to enroll in Medicare as an MDPP supplier. This factsheet provides an introduction to various CMS systems involved in the enrollment process.

Audience: Organizations waiting to achieve CDC preliminary or full recognition, or preparing to enroll

Where can I find the Enrollment Fact Sheet?

Go to: <http://go.cms.gov/mdpp>

Scroll to: *MDPP Enrollment and Recognition Information*

Click: *MDPP Enrollment Fact Sheet*



Enroll as an MDPP Supplier

Organizations can enroll online or use the paper enrollment form

Choose ONE of the following options to enroll as an MDPP supplier:

OPTION 1

Enroll online using the Provider Enrollment Chain and Ownership System (PECOS)

Access PECOS at:

<https://pecos.cms.hhs.gov/pecos/login.do>

OR

OPTION 2

Enroll using the paper CMS-20134 enrollment application

PECOS is recommended for a faster enrollment process

Link to MDPP Supplier Application: <https://www.cms.gov/Medicare/CMS-Forms/CMS-Forms/Downloads/CMS20134.pdf>



MDPP Supplier Resources: Enrollment Checklist

Use the Enrollment Checklist to gather the specific information and documentation needed to enroll as an MDPP supplier

Medicare Diabetes Prevention Program (MDPP) Enrollment Checklist

Prospective MDPP suppliers can use this checklist to gather the specific information and documentation needed to enroll as an MDPP supplier. Additional information generally required to enroll as a Medicare provider can be found at: <https://pecos.cms.hhs.gov/pecos/help-main/prvdspplrchecklist.jsp>

Choose ONE of the following options to enroll as an MDPP supplier:

OPTION 1
Enroll online using the Provider Enrollment Chain and Ownership System (PECOS)
Access PECOS at: <https://pecos.cms.hhs.gov/pecos/login.do>

OPTION 2
Enroll using the paper CMS-20134 enrollment application

PECOS is recommended for a faster enrollment process

Obtain a National Provider Identifier (NPI) and Tax Identification Number (TIN)

- Obtain an NPI and active or valid TIN prior to completing and submitting the enrollment application
- Use the National Plan and Provider Enumeration System (NPPES) to obtain an NPI
- Find additional information on NPPES: <https://nppes.cms.hhs.gov/webhelp/index.html>

Create an Identity and Access (I&A) account (only if enrolling online using PECOS, Option 1)

- An I&A account connects MDPP suppliers to important CMS systems and gives others access to enrollment information
- Users with an existing I&A account do not need to create a new, MDPP specific I&A account
- To register for an I&A account, go to: <https://nppes.cms.hhs.gov/IAWeb/register/startRegistration.do>

Gather documentation showing MDPP preliminary or full CDC DPRP recognition

- Needed in section 2 and 17 of the CMS-20134 application
- Organizations must report the organizational code(s), recognition status, effective date, and expiration date
- Documentation to verify recognition status must be provided. They may include copies of either:
 - A certificate (for full recognition)
 - A letter (for MDPP preliminary recognition)

Gather documentation on final adverse legal actions of your organization

- Needed in section 3 of the CMS-20134 application
- All information related to final adverse legal actions must be reported on the enrollment application, regardless if the records were expunged or if any appeals are pending
- If an adverse legal actions is reported, provide copies of related or supporting documentation (i.e., notifications, resolutions, and reinstatement)

What are final adverse legal actions?
Final adverse legal actions are convictions, exclusions, revocations, and suspensions. More information regarding final adverse legal actions are included in the CMS-20134 enrollment application.

CMS
CENTERS FOR MEDICARE & MEDICAID SERVICES

What is the Enrollment Checklist?

A document prospective MDPP suppliers may use to gather all the information needed to include in the MDPP enrollment application.

Audience: Organizations with CDC preliminary or full recognition that are starting the MDPP enrollment process.

Where can I find the Enrollment Checklist?

Go to: <http://go.cms.gov/mdpp>

Scroll to: *MDPP Enrollment and Recognition Information*

Click: *MDPP Enrollment Checklist*



How You Can Help Make MDPP a Success

Take action now!

CDC Recognized DPP Organizations:

- Check your recognition status (Full or Preliminary)
- If recognized, enroll now through PECOS

Diabetes Prevention Stakeholders:

- Encourage organizations to work toward CDC recognition
- Help educate organizations on CMS enrollment and billing processes using MDPP resources
- Work with providers to increase awareness and referrals

Clinicians:

- Become familiar with beneficiary eligibility criteria and coverage
- Educate patients on prediabetes and encourage participation in MDPP
- Get to know your local DPPs: https://nccd.cdc.gov/DDT_DPRP/Registry.aspx



Question & Answer Session



Appendix 1: Acronyms

Below is a list of frequently used MDPP acronyms.

| Acronym | Description |
|--------------|--|
| CMS | Centers for Medicare & Medicaid Services |
| CMMI | Center for Medicare and Medicaid Innovation |
| MDPP | Medicare Diabetes Prevention Program |
| CDC | Centers for Disease Control and Prevention |
| CDC DPRP | Centers for Disease Control and Prevention Diabetes Prevention Recognition Program |
| National DPP | National Diabetes Prevention Program |
| BMI | Body Mass Index |
| NPI | National Provider Identifier |
| ESRD | End Stage Renal Disease |
| MACs | Medicare Administrative Contractors |
| NPPES | National Plan and Provider Enumeration System |
| PECOS | Provider Enrollment Chain and Ownership System |



Appendix 2: Terminology

The table below defines terminology specific to MDPP services.

| Term | Description |
|--------------------------|---|
| MDPP Set of Services | Structured health behavior change sessions aimed at lowering the risk of type 2 diabetes by engaging eligible beneficiaries to promote weight loss through healthy eating and physical activity |
| MDPP Beneficiary | Eligible Part B Medicare beneficiary engaged in MDPP services |
| MDPP Supplier | An organization with DPP recognition that has enrolled in Medicare as an MDPP supplier to furnish MDPP services to eligible beneficiaries and bill Medicare for these services |
| MDPP Coach | Employees, contractors, or volunteers who provide MDPP sessions on behalf of an MDPP supplier to MDPP beneficiaries |
| Supplier Support Needs | Specific needs that MDPP suppliers have as they enroll and furnish MDPP services to eligible beneficiaries |
| Supplier Support Product | Materials and resources developed to meet the specific support needs of MDPP suppliers |
| Supplier Support Package | Complementary set of supplier support products developed to meet supplier support needs in different phases of the expanded model |



Appendix 3: MDPP HCPCS G-Codes

| Footnote | HCPCS G-Code | Description | VM Allowed* | Payment |
|-------------------------------------|--------------|--|-------------|---------|
| Core Sessions | | | | |
| 1 | G9873 | MDPP beneficiary attended the first MDPP core session. | No | \$25 |
| 2 | G9874 | MDPP beneficiary attended a total of 4 MDPP core sessions. | Yes | \$50 |
| 3 | G9875 | MDPP beneficiary attended a total of 9 MDPP core sessions. | Yes | \$90 |
| Core Maintenance Sessions | | | | |
| 4 | G9876 | MDPP beneficiary attended 2 MDPP core maintenance sessions in months 7-9. | Yes | \$15 |
| 5 | G9877 | MDPP beneficiary attended 2 MDPP core maintenance sessions in months 10-12. | Yes | \$15 |
| 6 | G9878 | MDPP beneficiary attended 2 MDPP core maintenance sessions in months 7-9, and achieved the 5% weight loss from his/her baseline weight. Use G9878 or G9876. | Yes | \$60 |
| 7 | G9879 | MDPP beneficiary attended 2 MDPP core maintenance sessions in months 10-12, and achieved the 5% weight loss from his/her baseline weight. Use G9879 or G9877. | Yes | \$60 |
| Ongoing Maintenance Sessions | | | | |
| 8 | G9882 | MDPP beneficiary attended 2 MDPP ongoing maintenance sessions in months 13-15, and achieved the 5% weight loss from his/her baseline weight during the interval. | Yes | \$50 |
| 9 | G9883 | MDPP beneficiary attended 2 MDPP ongoing maintenance sessions in months 16-18, and achieved the 5% weight loss from his/her baseline weight during the interval. | Yes | \$50 |
| 10 | G9884 | MDPP beneficiary attended 2 MDPP ongoing maintenance sessions in months 19-21, and achieved the 5% weight loss from his/her baseline weight during the interval. | Yes | \$50 |
| 11 | G9885 | MDPP beneficiary attended 2 MDPP ongoing maintenance sessions in months 22-24, and achieved the 5% weight loss from his/her baseline weight during the interval. | Yes | \$50 |
| Additional Codes | | | | |
| 12 | G9880 | MDPP beneficiary achieved at least 5% weight loss from his/her baseline weight in months 1–12. This is a one-time payment available when a beneficiary first achieves at least 5% weight loss from baseline as measured by an in-person weight measurement at a core session or core maintenance session. | No | \$160 |
| 13 | G9881 | The MDPP beneficiary achieved at least 9% weight loss from his/her baseline weight in months 1–24. This is a one-time payment available when a beneficiary first achieves at least 9% weight loss from baseline as measured by an in-person weight measurement at a core session, core maintenance session, or ongoing maintenance session. | No | \$25 |
| 14 | G9890 | Bridge Payment: A <i>one-time payment</i> for the first MDPP core session, core maintenance session, or ongoing maintenance session furnished by an MDPP supplier to an MDPP beneficiary during months 1–24. This occurs when a beneficiary has previously received his/her first core session from a different MDPP supplier. A supplier may only receive one bridge payment per MDPP beneficiary. | Yes | \$25 |



Resources



Ready to become a CDC-recognized National DPP delivery organization?

Head to the [National DPP Website](#)



Ready to enroll as an MDPP supplier?

Once recognized by CDC (either full or preliminary status), enroll online through the Provider Enrollment Chain and Ownership System (PECOS) [here](#). Review the enrollment application [here](#)



Want to access supplier support resources?

Head to the [MDPP Website](#)



Want to find out which organizations are eligible to become MDPP suppliers?

Head to [CDC's National DPP Registry](#), and look for “Full” or “Preliminary” recognition organizations



Other ways to stay updated or ask questions

Sign up for our listserv at [MDPP Website](#), email us at mdpp@cms.hhs.gov, call the MDPP Help Desk at 1-877-906-4940



Thank You – Please Evaluate Your Experience

Share your thoughts to help us improve – [Evaluate](#) today's event

Visit:

- [MLN Events](#) webpage for more information on our conference call and webcast presentations
- [Medicare Learning Network](#) homepage for other free educational materials for health care professionals.

The Medicare Learning Network® and MLN Connects® are registered trademarks of the U.S. Department of Health and Human Services (HHS).

