
CMS Manual System

Pub. 100-04 Medicare Claims Processing

Department of Health &
Human Services (DHHS)
Centers for Medicare &
Medicaid Services (CMS)

Transmittal 141

Date: APRIL 16, 2004

CHANGE REQUEST 3210

I. SUMMARY OF CHANGES: This transmittal announces that there will be no recurring update to the NCD laboratory edit module for July 2004. It also announces the availability of a PC-based version of the inquiry module.

NEW/REVISED MATERIAL - EFFECTIVE DATE: July 1, 2004

***IMPLEMENTATION DATE: July 6, 2004**

II. CHANGES IN MANUAL INSTRUCTIONS: (N/A if manual not updated.)
(R = REVISED, N = NEW, D = DELETED) – (Only One Per Row.)

R/N/D	CHAPTER/SECTION/SUBSECTION/TITLE
N/A	

***III. FUNDING:**

These instructions shall be implemented within your current operating budget.

IV. ATTACHMENTS:

	Business Requirements
	Manual Instruction
	Confidential Requirements
	One-Time Notification
X	Recurring Update Notification

***Medicare contractors only**

Attachment – Recurring Update Notification

Pub. 100-04	Transmittal: 141	Date: April 16, 2004	Change Request 3210
-------------	------------------	----------------------	---------------------

SUBJECT: Changes to the Laboratory National Coverage Determination (NCD) Edit Software for July 2004

I. GENERAL INFORMATION

A. Background: The NCDs for clinical diagnostic laboratory services were developed by the laboratory negotiated rulemaking committee and published as a final rule on November 23, 2001. Nationally uniform software has been developed by Computer Science Corporation (CSC) and incorporated in the shared systems so that laboratory claims subject to one of the 23 NCDs are processed uniformly throughout the nation effective January 1, 2003. The laboratory edit module for the NCDs may be updated quarterly as necessary to reflect ministerial coding updates and substantive changes to the NCDs developed through the NCD process. (See Pub. 100-4, Chapter 16, §120.2.)

B. Policy: There will be no update of the lab edit module for July 2004. Contractors should continue to use the version of the edit module that was included in the April 2004 release.

CSC is developing a Personal Computer (PC) based version of the online inquiry system that is available on the mainframe. Contractors are not required to download and use the PC version of the inquiry system. The PC-based version is an enhancement to the system and its use is completely voluntary on the part of each individual contractor.

Contractors wishing to use the PC version of the NCD lab edit module may request a copy on a CD inclusive of a User Manual by sending a request by email to: ncdtechnicalsupport@vips.com. Requests should include the name and address of the person to whom the software should be sent. The functional specification for the PC inquiry module is attached. The PC version of the inquiry system will be updated quarterly to keep it current with the online edit module.

C. Provider Education: None.

II. BUSINESS REQUIREMENTS

"Shall" denotes a mandatory requirement

"Should" denotes an optional requirement

Requirement #	Requirements	Responsibility
N/A		

III. SUPPORTING INFORMATION AND POSSIBLE DESIGN CONSIDERATIONS

A. Other Instructions: N/A

X-Ref Requirement #	Instructions

B. Design Considerations: N/A

X-Ref Requirement #	Recommendation for Medicare System Requirements

C. Interfaces: N/A

D. Contractor Financial Reporting /Workload Impact: N/A

E. Dependencies: N/A

F. Testing Considerations: N/A

IV. SCHEDULE, CONTACTS, AND FUNDING

Effective Date: July 1, 2004 Implementation Date: July 6, 2004 Pre-Implementation Contact(s): Jackie Sheridan-Moore 410-786-4635 Post-Implementation Contact(s): Jackie Sheridan-Moore 410-786-4635	These instructions shall be implemented within your current operating budget.
--	---

Attachment

National Coverage Determinations
Edit Module
Online Inquiry
PC Version

Functional
Specification
Version 1.0

February 2, 2003

DRAFT

Document Control Number NCD-

Prepared by:

Computer Sciences Corporation
3120 Lord Baltimore Drive
Baltimore, MD 21244
(443) 436-6890

ViPS Inc.
One W. Pennsylvania Ave.
Towson, Maryland 21204
(410) 832-8300

SIGNOFF / REVISIONS

Approved: _____
Ms. Jackie Sheridan-Moore Date
Government Task Leader
Centers for Medicare & Medicaid Svc

Prepared: _____
Mr. Matt Zurad Date
Project Director
Computer Sciences Corporation

Prepared: _____
Mr. Gary Calabrese Date
Project Manager
VIPS, Inc.

Revision	Date	Revision/Change Description	Pages Affected
Baseline	2/02/04	Draft Version of specifications	All
Final Version		Final Version of specifications	

Table of Contents

1 INTRODUCTION.....6

1.1 BACKGROUND.....6

1.2 PURPOSE.....6

2 FUNCTIONAL OVERVIEW7

3 TECHNICAL DESCRIPTION.....8

3.1 DATABASE8

3.2 DATABASE LOAD PROGRAM9

3.3 PC INQUIRY MODULE10

3.4 SCREEN DESCRIPTIONS.....10

 3.4.1 *Option 1*11

 3.4.2 *Option 2*13

 3.4.3 *Option 3*14

 3.4.4 *Option 4*15

3.5 PROGRAM NAVIGATION16

4 INSTALLATION PROCEDURES.....16

Introduction

Background

The Centers for Medicare & Medicaid Services (CMS) issued a Program Memorandum AB-02-030 containing the instructions for 23 National Coverage Determinations (NCDs) that were included in a final rule published in the Federal Register (66 FR 58788). To meet the requirements of this Program Memorandum, an edit module was developed and implemented by all standard systems in January 2003. The design consisted of an edit module and a table module for diagnosis-to-procedure edits for each NCD.

The ability to view the diagnosis-to-procedure table was not included in the original edit module. An online inquiry program was developed and implemented in July, 2003, which allowed the Medicare standard systems and contractors to view the diagnosis-to-procedure table for assistance in resolution when errors occur in processing claims with NCD codes.

It was determined that a need exists for a PC-based version of this inquiry. This version will allow the contractors to view and inquire against the NCD edit table on a personal computer, with or without access to a mainframe, in a more convenient and easy-to-use format.

Purpose

The need exists for contractors to be able to view the contents of the NCD edit table in order to better answer questions about the specifics and resolve errors that may occur in the NCD module edits. This module will allow users to view the contents of the NCD edit table in several different ways. It will not require access to the mainframe.

Functional Overview

The NCD online inquiry PC-based module will consist of:

1. A database containing all of the diagnosis codes, procedure codes, and effective dates for the 23 existing lab NCD's.
2. A program which will allow viewing of the NCD information on a personal computer.

The NCD online inquiry PC-based module will allow the standard systems and the contractors access to the NCD edit table that is used by the NCD Edit Module. This module will be similar in function to the existing mainframe program VNCXX101, transaction VNCD. This module will contain the following screens:

A main screen that will allow for inquiring into the NCD edit table in several ways.

A screen that will display all the diagnosis codes for a specific procedure code, along with their effective dates.

A screen that will display all the procedure codes in the table, along with their effective dates

A screen that will display all of the NCD's numbers and descriptions.

Technical Description

The system will consist of:

1. A database to contain the NCD procedure codes, diagnosis codes, effective dates, etc.
2. A program to load the NCD data to the database from a spreadsheet. A process is already in place to manage this spreadsheet. It is maintained by CSC and updated quarterly with any changes to the NCD information.
3. A program to display the NCD information on a personal computer.

The NCD online inquiry PC-based module will be programmed in the Visual Basic language. It will be distributed to individual PC's via a setup.exe program, which will be executed on each PC to install the module and associated files on the PC. PC users will have the ability to easily install the module on their own PCs.

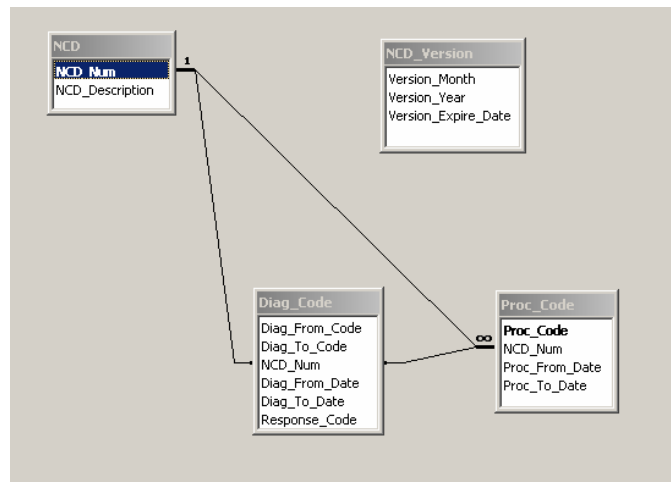
Database

The database will consist of the following tables:

1. Version – start date of the version, end date
2. NCD – NCD number and description
3. Proc Code – NCD number, Procedure code, from and to dates
4. Diag Code – NCD number, Diagnosis code (from and to) from and to dates

The NCD number will be used to match the data in the NCD, Proc Code, and Diag Code tables.

Below is a graphic layout of the NCD database:



Database load program

The database load program will be used by CSC/Vips personnel to create the database which will be used by the inquiry module. This will not be part of the module distributed to users.

CSC maintains a spreadsheet with all of the NCD data, which is updated quarterly with new or changed procedure codes, diagnosis codes, and effective dates. This spreadsheet is converted to a CSV (comma-separated values) as an intermediate step in converting it to a mainframe editing table. The database load program will read this CSV file and load the data into the PC-based database. It will be updated on a quarterly basis along with the mainframe version.

PC Inquiry module

The NCD online inquiry program will be entered by executing an .exe file which will reside on the PC. This may be done in two ways:

1. A shortcut may be placed on the desktop for easy access. The user will double-click on this shortcut to start the program.
2. Navigate to the program via the Windows START menu. The setup program will automatically place an item on the user's START menu.

Screen Descriptions

Upon initial entry to the program, the following window will be displayed:



This window identifies the program and allows the user to click a button to enter. Optionally, a checkbox may be checked to skip this screen in the future, for those who would rather go right to the first entry screen.

Upon clicking the “enter” button, the following window is displayed. This is the main screen for all inquiries, and allows access to all of the other screens.

NCD Edit Table Inquiry

Centers for Medicare & Medicaid Services
Medicare National Coverage Determinations (NCD)
Clinical Diagnostic Laboratory Services

Procedure Code

Diagnosis Code

Date of Service

Version: April, 2004

There are four possible options:

1. Enter a procedure code and diagnosis code, with or without a date of service, click “Inquire”.
2. Enter a procedure code, no diagnosis code, with or without a date of service, click “Inquire”.
3. Leave the procedure code and diagnosis code blank, click “Inquire”.
4. Click “List NCDs”.

The actions described below will be taken based on the data entered.

The version date will be displayed at the bottom of the screen. If the version is out of date, a message will be displayed next to the date warning the user that they need an updated version.

Option 1

If the procedure code and diagnosis code are entered on the initial screen, with or without a date of service, the program will read the NCD table and displays the appropriate response for that procedure/diagnosis combination. If the date of service is not entered, the current date will be used.

Centers for Medicare & Medicaid Services
Medicare National Coverage Determinations (NCD)
 Clinical Diagnostic Laboratory Services

Procedure Code: 87086
 Diagnosis Code: 0031
 Date of Service: 02/25/2004
 NCD Number: 40-01
 Culture, Bacterial, Urine
 Response: 4 - Deny List 3

Version: April, 2004

Option 2

If the procedure code is entered on the initial screen, without a diagnosis code, with or without a date of service, the program will display all of the diagnosis codes in the lists related to that procedure code, which are effective on the date of service. The codes will be shown under the following headings:

- List 1 – Covered Diagnoses
- List 2 – Diagnoses Non-Covered by Statute
- List 3 – Diagnoses Not Medically Necessary

The screenshot shows a window titled "NCD Edit Table Inquiry" with the CMS logo and the text "Centers for Medicare & Medicaid Services Medicare National Coverage Determinations (NCD) Clinical Diagnostic Laboratory Services".

Procedure Code: 87086
 Date of Service: 02/25/2004
 NCD Number: 40-01 Culture, Bacterial, Urine

Covered Diagnoses

Diagnosis Codes	Action	Effective Date	Termination Date
03810 - 03811	0 - Approve	11/25/2002	
03840 - 03844	0 - Approve	11/25/2002	
2762	0 - Approve	11/25/2002	
2764	0 - Approve	11/25/2002	
2866	0 - Approve	11/25/2002	
2880	0 - Approve	11/25/2002	
2888	0 - Approve	11/25/2002	

Diagnoses Non-Covered by Statute

Diagnosis Codes	Action	Effective Date	Termination Date
7980	3 - Deny List 2	11/25/2002	
7981	3 - Deny List 2	11/25/2002	
7982	3 - Deny List 2	11/25/2002	
7989	3 - Deny List 2	11/25/2002	
V1585	3 - Deny List 2	11/25/2002	
V161	3 - Deny List 2	11/25/2002	
V162	3 - Deny List 2	11/25/2002	

Diagnoses Not Medically Necessary

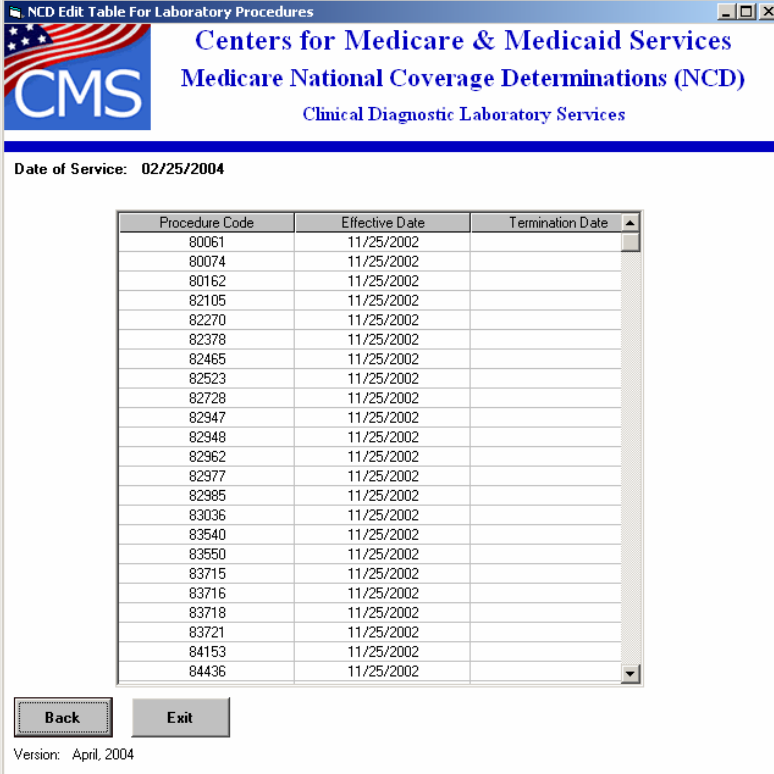
All codes not in the above lists.

Buttons: Back, Exit

Version: April, 2004

Option 3

If no data is entered on the initial screen, or only the date of service is entered, a list of all the procedure codes in the table will be displayed. If a date of service was entered, only those procedure codes that are effective in the NCD edit module on the date of service will be displayed.



Procedure Code	Effective Date	Termination Date
80061	11/25/2002	
80074	11/25/2002	
80162	11/25/2002	
82105	11/25/2002	
82270	11/25/2002	
82378	11/25/2002	
82465	11/25/2002	
82523	11/25/2002	
82728	11/25/2002	
82947	11/25/2002	
82948	11/25/2002	
82962	11/25/2002	
82977	11/25/2002	
82985	11/25/2002	
83036	11/25/2002	
83540	11/25/2002	
83550	11/25/2002	
83715	11/25/2002	
83716	11/25/2002	
83718	11/25/2002	
83721	11/25/2002	
84153	11/25/2002	
84436	11/25/2002	

To display diagnosis codes for a procedure code on the screen, the user may double-click on a procedure code, and the Option 2 screen will be displayed for the selected procedure code.

Option 4

If the “List NCD’s” button on the main screen is clicked, the following screen is displayed:

NCD Number	Description
40-01	Culture, Bacterial, Urine
40-02	Human Immunodeficiency Virus Testing - Prognosis including monitoring
40-03	NCD Human Immunodeficiency Virus Testing - Diagnosis
40-04	Blood Counts
40-05	Partial Thromboplastin Time
40-06	Prothombin Time
40-07	Serum Iron Studies
40-08	Collagen Crosslinks, Any Method
40-09	Blood Glucose Testing
40-10	Glycated Hemoglobin/ Glycated Protein
40-11	Thyroid Testing
40-12	Lipids
40-13	Digoxin Therapeutic Drug Assay
40-14	Alpha-fetoprotein
40-15	Carcinoembryonic Antigen
40-16	Human Chorionic Gonadotropin
40-17	Tumor Antigen by Immunoassay - CA125
40-18	Tumor Antigen by Immunoassay CA 15-3/CA27.29
40-19	Tumor Antigen by Immunoassay CA 19-9
40-20	Prostate Specific Antigen
40-21	Gamma Glutamyl Transferase
40-22	Hepatitis Panel/Acute Hepatitis Panel
40-23	Fecal Occult Blood

Back Exit

Version: April, 2004

All NCD’s numbers and descriptions will be listed. The user may then double-click on an NCD to display the procedure codes associated with that NCD. The Option 3 screen will then be displayed, showing only those procedure codes for the requested NCD.

Program Navigation

A “RETURN” button will be provided on each screen that will return the user to the previous screen or back to the main screen.

An “EXIT” button will be provided on each screen which will end the program.

Vertical scroll bars will be provided to allow scrolling up and down through procedure codes and diagnosis codes when they do not fit on one screen.

Installation Procedures

A setup program will be provided which will facilitate loading the program and data on each user’s PC. The user will start the program setup and will be guided through a program installation wizard. The program will install the inquiry program, NCD edit table database, and any other necessary files. The setup program will be placed on a website where users can download to their PC. A link to the website (CMS or ViPS) will be provided.

Each quarter whenever there are changes made to the NCD table, a new edit table database will need to be installed on the PC. The updated database will also be available for downloading, similar to the original program.