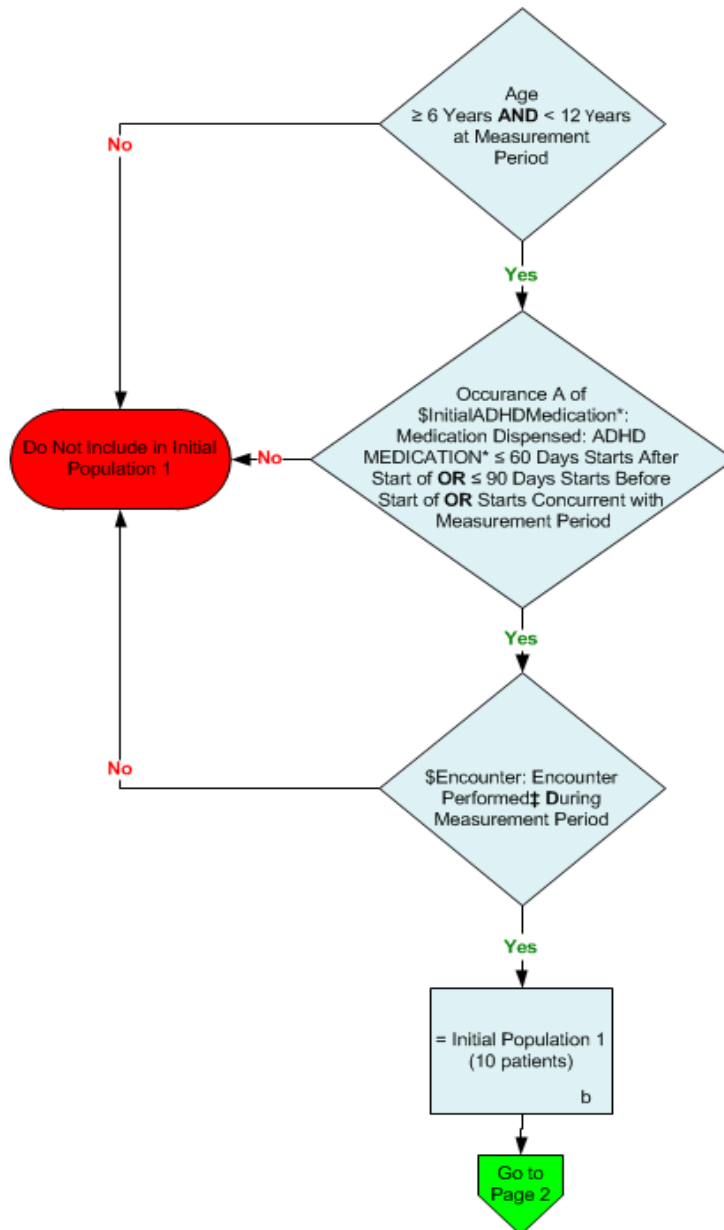


2014 eCQM Flow
Measure Identifier: CMS136v5

NQF 0108: ADHD: Follow-Up Care for Children Prescribed Attention-Deficit/Hyperactivity Disorder (ADHD) Medication

This eCQM requires the reporting of two Performance Rates on two populations

Initial Population 1

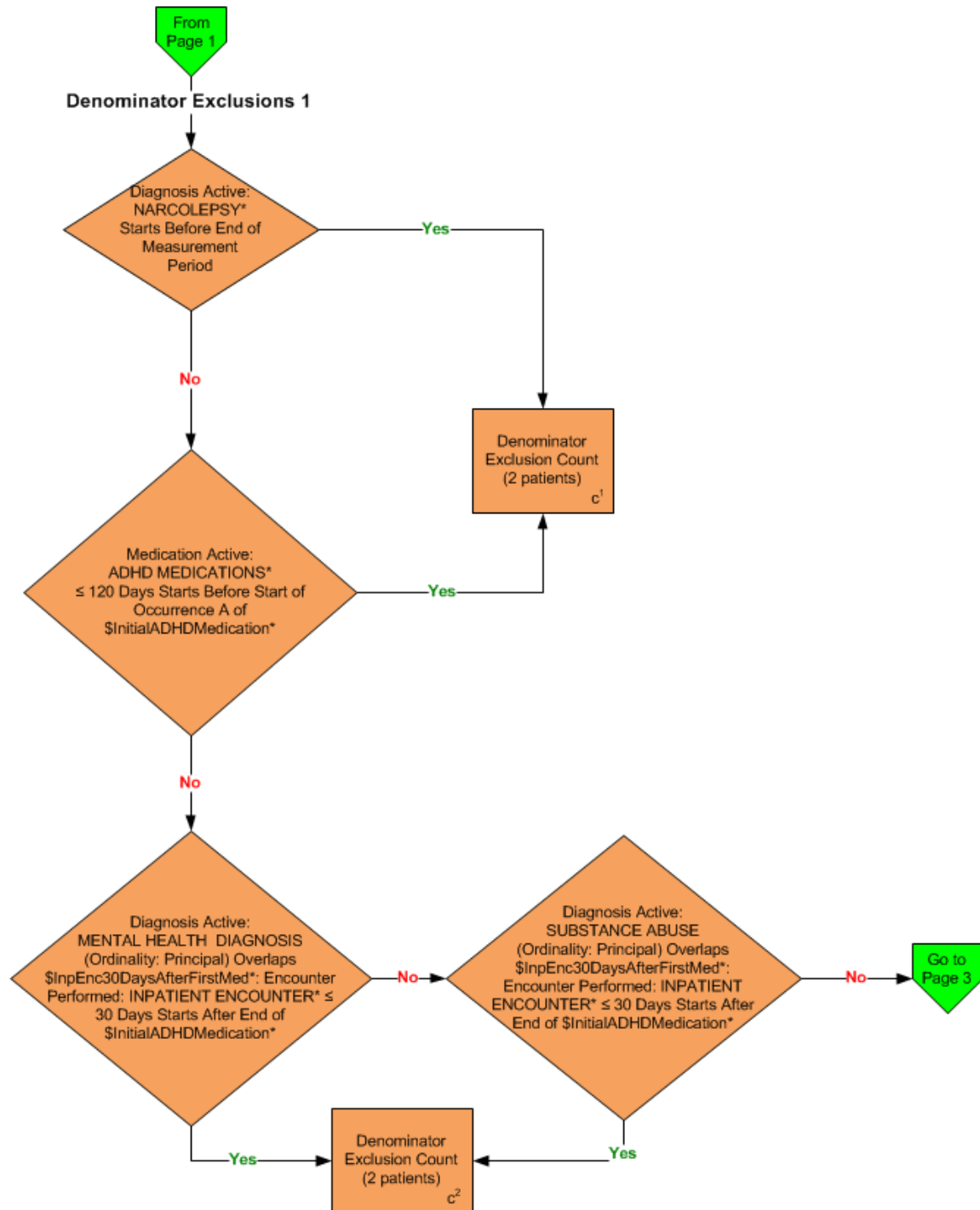


*Please refer to the specific section of the eCQM to identify the QDM data elements and associated value sets for use in reporting this eCQM.

‡ For a list of appropriate encounters, please refer to the Population Criteria and associated value sets as specific data elements have not been listed

2014 eCQM Flow
Measure Identifier: CMS136v5

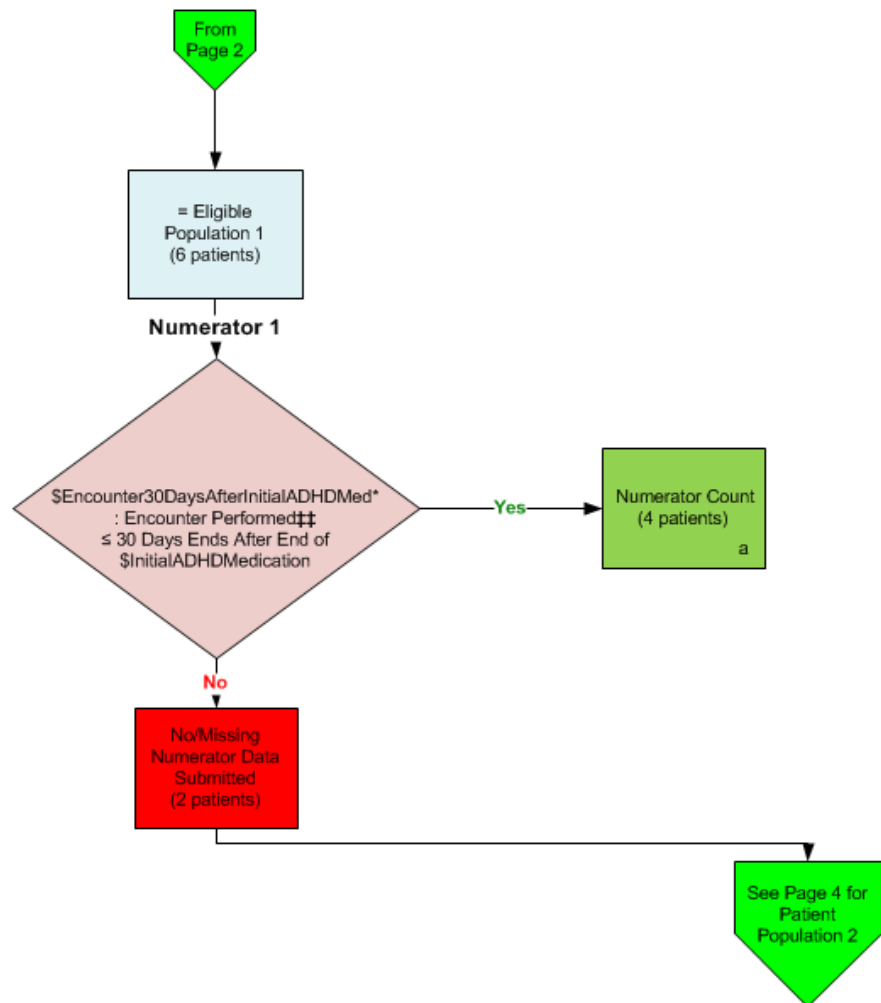
NQF 0108: ADHD: Follow-Up Care for Children Prescribed Attention-Deficit/Hyperactivity Disorder (ADHD) Medication



*Please refer to the specific section of the eMeasure to identify the QDM data elements and associated value sets for use in reporting this eMeasure.

2014 eCQM Flow
Measure Identifier: CMS136v5

NQF 0108: ADHD: Follow-Up Care for Children Prescribed Attention-Deficit/Hyperactivity Disorder (ADHD) Medication



##For a list of appropriate encounters, please refer to the Population Criteria and associated value sets as specific data elements have not been listed

SAMPLE CALCULATION: *Combination of Initial Population 1; Denominator 1; Numerator 1*

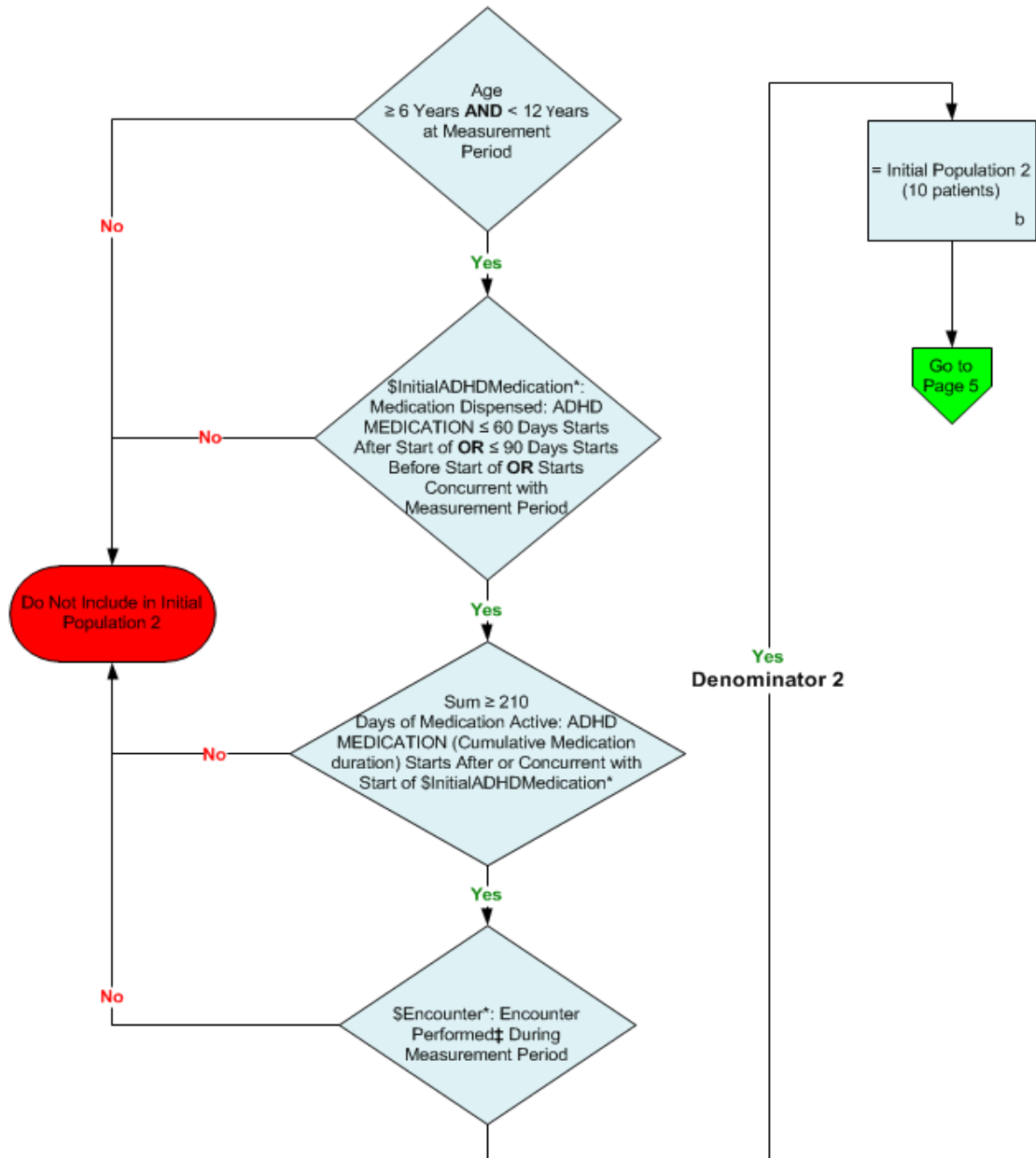
Performance Rate =

$$\frac{\text{Numerator (a=4 patients)}}{\text{Denominator (b=10 patients) – Denominator Exclusions (c¹ + c² = 4 patients) – Denominator Exceptions (N/A)}} = 66.67\%$$

2014 eCQM Flow
Measure Identifier: CMS136v5

NQF 0108: ADHD: Follow-Up Care for Children Prescribed Attention-Deficit/Hyperactivity Disorder (ADHD) Medication

Initial Population 2

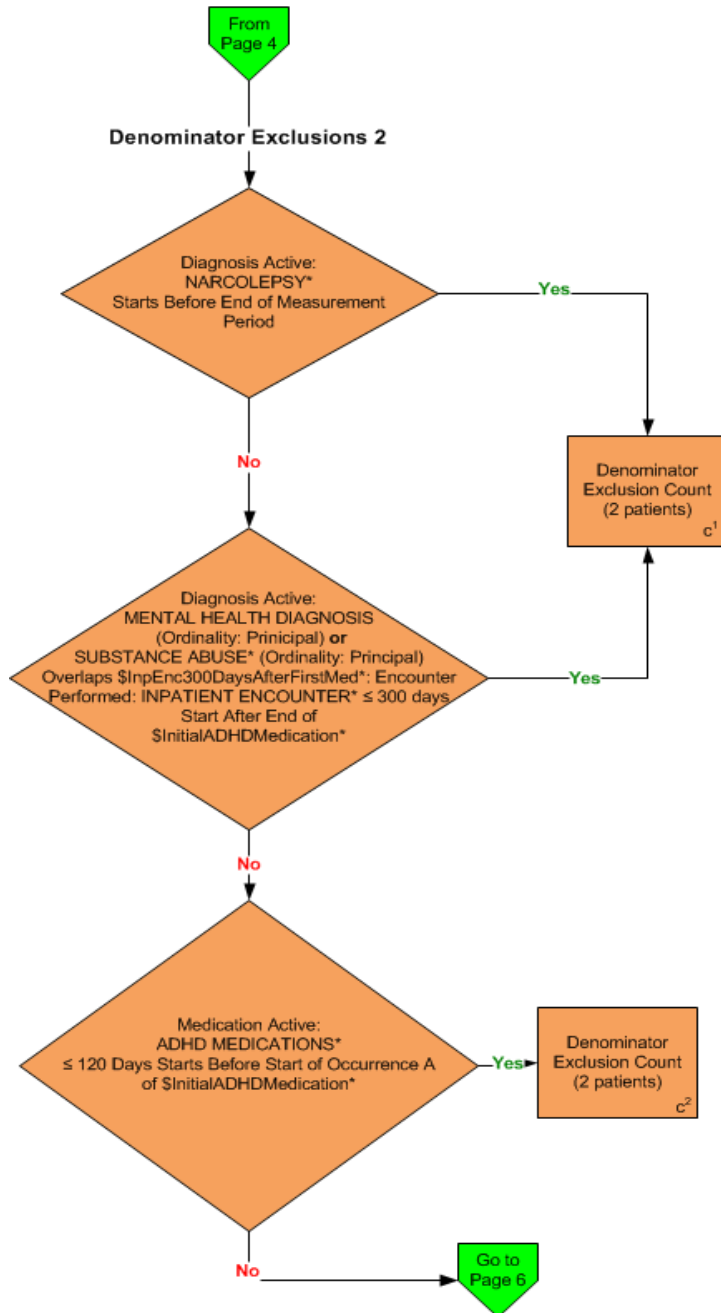


*Please refer to the specific section of the eCQM to identify the QDM data elements and associated value sets for use in reporting this eCQM.

‡ For a list of appropriate encounters, please refer to the Population Criteria and associated value sets as specific data elements have not been listed

2014 eCQM Flow
Measure Identifier: CMS136v5

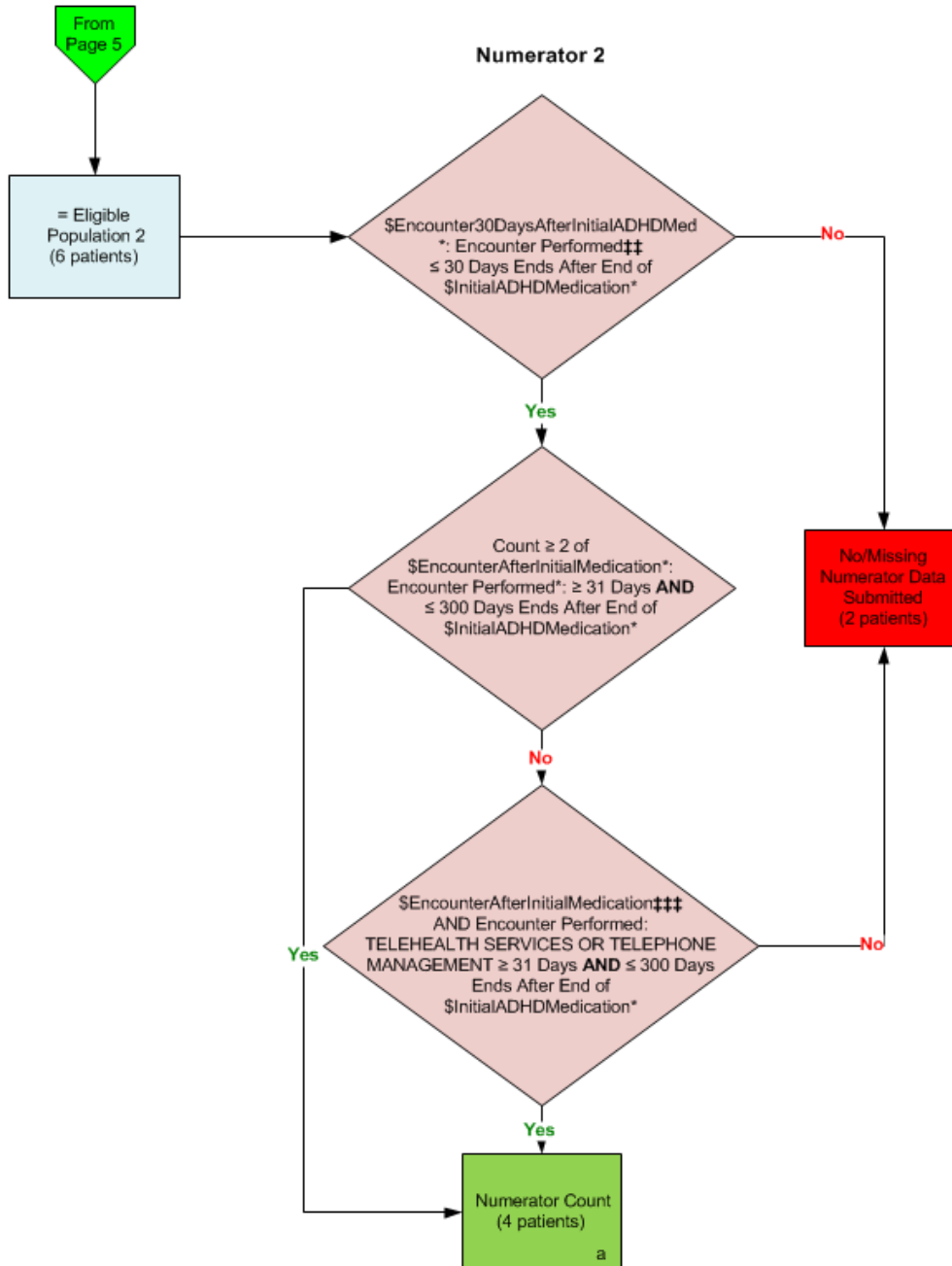
NQF 0108: ADHD: Follow-Up Care for Children Prescribed Attention-Deficit/Hyperactivity Disorder (ADHD) Medication



*Please refer to the specific section of the eCQM to identify the QDM data elements and associated value sets for use in reporting this eCQM.

**2014 eCQM Flow
Measure Identifier: CMS136v5**

NQF 0108: ADHD: Follow-Up Care for Children Prescribed Attention-Deficit/Hyperactivity Disorder (ADHD) Medication



*Please refer to the specific section of the eCQM to identify the QDM data elements and associated value sets for use in reporting this eCQM.
 ††For a list of appropriate encounters, please refer to the Population Criteria and associated value sets as specific data elements have not been listed.
 ††† For a list of appropriate encounters, please refer to the Population Criteria and associated value sets as specific data elements have not been listed.

2014 eCQM Flow
Measure Identifier: CMS136v5

NQF 0108: ADHD: Follow-Up Care for Children Prescribed Attention-Deficit/Hyperactivity Disorder (ADHD) Medication

SAMPLE CALCULATION: *Combination of Initial Population 2; Denominator 2; Numerator 2*

Performance Rate =

$$\frac{\text{Numerator (a=4 patients)}}{\text{Denominator (b=10 patients) – Denominator Exclusions (c¹ + c²=4 patients) – Denominator Exceptions (N/A)}} = 66.67\%$$

2014 eCQM Flows

Measure Identifier: CMS136v5

NQF 0108: ADHD: Follow-Up Care for Children Prescribed Attention-Deficit/Hyperactivity Disorder (ADHD) Medication

This eCQM requires the reporting of two Performance Rates.

Please refer to the specific section of the eCQM to identify the Population Criteria and associated value sets for use in reporting this eCQM.

1. Start Initial Population 1
2. Check Age:
 - a. If the AGE is greater than or equal to 6 years AND less than 12 years of age at measurement period, equals No, do not include in Initial Population 1. Stop Processing.
 - b. If the AGE is greater than or equal to 6 years AND less than 12 years of age at measurement period, equals Yes, continue processing and proceed to check Occurrence A of \$InitialADHDMedication, Medication Dispensed.
3. Check Occurrence A of \$InitialADHDMedication Medication Dispensed:
 - a. If Occurrence A of \$InitialADHDMedication Medication Dispensed of QDM data element, ADHD MEDICATIONS, less than or equal to 60 days starts after start of OR less than or equal to 90 days starts before start of OR starts concurrent with measurement period, equals Yes, Continue on to \$Encounter, Encounter Performed.
 - b. If Occurrence A of \$InitialADHDMedication Medication Dispensed of QDM data element, ADHD MEDICATIONS, less than or equal to 60 days starts after start of OR less than or equal to 90 days starts before start of OR starts concurrent with measurement period, equals No, do not include in Initial Population 1. Stop processing.
4. Check \$Encounter:
 - a. If the \$Encounter: Encounter Performed, QDM data element, OFFICE VISIT, or QDM data element, HOME HEALTHCARE SERVICES, or the QDM data element, PREVENTIVE CARE – INTIAL OFFICE VISIT, 0 TO 17, or the QDM data element, PREVENTIVE CARE – ESTABLISHED OFFICE VISIT, 0 TO 17, or the QDM data element, FACE-TO-FACE INTERACTION, or the QDM data element, FACE-TO-FACE INTERACTION, during measurement period equals Yes, include in Initial Population 1 and proceed to Denominator 1.
 - b. If \$Encounter: Encounter Performed, QDM data element, OFFICE VISIT, or QDM data element, HOME HEALTHCARE SERVICES, or the QDM data element, PREVENTIVE CARE – INTIAL OFFICE VISIT, 0 TO 17, or the QDM data element, PREVENTIVE CARE – ESTABLISHED OFFICE VISIT, 0 TO 17, or the QDM data element, FACE-TO-FACE INTERACTION, or the QDM data element, FACE-TO-

FACE INTERACTION, during measurement period equals No, do not include in Initial Population 1. Stop Processing.

5. Start Denominator 1
 - a. Denominator equals the Initial Population 1. Denominator 1 is represented by the letter b in the sample calculation listed at the end of this document. Letter b equals 10 patients in the sample calculation.
6. Start Denominator Exclusions 1:
7. Check Diagnosis Active:
 - a. If the Diagnosis Active QDM data element NARCOLEPSY starts before end of measurement period equals Yes, include in Denominator Exclusion Count. Exclusions are represented by the letter c¹ in the sample calculation listed at the end of Initial Population 1. Letter c¹ equals 2 patients in the sample calculation.
 - b. If the Diagnosis Active QDM data element NARCOLEPSY starts before end of measurement period equals No, proceed to check Medication Active.
8. Check Medication Active:
 - a. If the Medication Active QDM data element, ADHD MEDICATIONS less than or equal to 120 days starts before start of Occurrence A of \$InitialADHDMedication (Medication Dispensed QDM data element ADHD MEDICATIONS, less than or equal to 60 days starts after start of OR less than or equal to 90 days starts before start of OR starts concurrent with measurement period), equals Yes, include in Denominator Exclusion Count. Exclusions are represented by the letter c1 in the sample calculation listed at the end of Initial Population 1. Letter c1 equals 2 patients in the sample calculation.
 - b. If the Medication Active QDM data element, ADHD MEDICATIONS less than or equal to 120 days starts before start of Occurrence A of \$InitialADHDMedication (Medication Dispensed QDM data element ADHD MEDICATIONS, less than or equal to 60 days starts after start of OR less than or equal to 90 days starts before start of OR starts concurrent with measurement period), equals No, proceed to check Diagnosis Active, Encounter Performed.
9. Check Diagnosis Active, Encounter Performed:
 - a. If the Diagnosis Active QDM data element, MENTAL HEALTH DIAGNOSES (ordinality: principal) OR SUBSTANCE ABUSE (ordinality: principal) overlaps QDM data element \$InpEnc30DaysAfterFirstMed (Encounter Performed, INPATIENT ENCOUNTER less than or equal to 30 days starts after end of \$InitialADHDMedication [Medication Dispensed QDM data element ADHD MEDICATIONS, less than or equal to 60 days starts after start of OR less than or equal to 90 days starts before start of OR starts concurrent with measurement period]), equals Yes, include in Denominator Exclusion Count. Exclusions are represented by the letter c² in the sample calculation listed at the end of Initial Population 1. Letter c² equals 2 patients in the sample calculation.

- b. If the Diagnosis Active QDM data element, MENTAL HEALTH DIAGNOSES (ordinality: principal) OR SUBSTANCE ABUSE (ordinality: principal) overlaps QDM data element \$InpEnc30DaysAfterFirstMed (Encounter Performed, INPATIENT ENCOUNTER less than or equal to 30 days starts after end of \$InitialADHDMedication [Medication Dispensed QDM data element ADHD MEDICATIONS, less than or equal to 60 days starts after start of OR less than or equal to 90 days starts before start of OR starts concurrent with measurement period]), equals No, include in Eligible Population 1 and proceed to Numerator 1.

10. Start Numerator 1

11. Check \$Encounter30DaysAfterInitialADHDMed:

- a. If \$Encounter30DaysAfter InitialADHDMed, Encounter Performed, QDM data element OFFICE VISIT, or QDM data element Hospital Observation Care – Initial, or QDM data element Preventive Care - Established Office Visit, 0 to 17, or QDM data element Preventive Care Services - Group Counseling, or QDM data element Preventive Care Services-Individual Counseling, or QDM data element Behavioral Health Follow-up Visit, or QDM data element Face-to-Face Interaction, or QDM data element Psychotherapy and Pharmacologic Management (facility location: 'Ambulatory'), or QDM data element Discharge Services- Observation Care, or QDM data element Outpatient Consultation, or QDM data element Home Healthcare Services, or QDM data element Preventive Care- Initial Office Visit, 0 to 17, or QDM data element psych visit – psychotherapy, or QDM data element psych visit – diagnostic evaluation, less than or equal to 30 days ends after end of \$InitialADHDMedication (QDM data element, Medication Dispensed, ADHD MEDICATIONS, less than or equal to 60 days starts after start of OR less than or equal to 90 days starts before start of OR starts concurrent with measurement period), equals Yes, include in Numerator Count. Numerator is represented by Letter a in the sample calculation listed at the end of this document. Letter a equals 4 patients in the sample calculation. Proceed to Initial Population 2.
- b. If the \$Encounter30DaysAfterInitialADHDMed, Encounter Performed, QDM data element OFFICE VISIT, or QDM data element Hospital Observation Care – Initial, or QDM data element Preventive Care - Established Office Visit, 0 to 17, or QDM data element Preventive Care Services - Group Counseling, or QDM data element Preventive Care Services-Individual Counseling, or QDM data element Behavioral Health Follow-up Visit, or QDM data element Face-to-Face Interaction, or QDM data element Psychotherapy and Pharmacologic Management (facility location: 'Ambulatory'), or QDM data element Discharge Services- Observation Care, or QDM data element Outpatient Consultation, or QDM data element Home Healthcare Services, or QDM data element Preventive Care- Initial Office Visit, 0 to 17, or QDM data element psych visit – psychotherapy, or QDM data element psych visit – diagnostic evaluation, less than or equal to 30 days ends after end of \$InitialADHDMedication (QDM data element, Medication Dispensed, ADHD MEDICATIONS, less than or equal to 60 days starts after start of OR less than or equal to 90 days starts before start of OR starts concurrent with measurement

period), equals No, include in the No/Missing Numerator Data Submitted count and stop processing for Numerator 1. Proceed to Initial Population 2.

SAMPLE CALCULATION: *Combination of Initial Population 1; Denominator 1; Numerator 1*

Performance Rate =

$$\frac{\text{Numerator (a=4 patients)}}{\text{Denominator (b=10 patients) – Denominator Exclusions (c}^1\text{ + c}^2\text{ = 4 patients) – Denominator Exceptions (N/A)}} = 66.67\%$$

1. Start Initial Population 2
2. Check Age:
 - a. If the AGE is greater than or equal to 6 years AND less than 12 years of age at measurement period equals No, do not include in Initial Population 2. Stop Processing.
 - b. If the AGE is greater than or equal to 6 years AND less than 12 years of age at measurement period, equals Yes, continue processing and proceed to check \$InitialADHDMedication, Medication Dispensed.
3. Check \$InitialADHDMedication, Medication Dispensed:
 - a. If the \$InitialADHDMedication, Medication Dispensed QDM data element, ADHD MEDICATIONS less than or equal to 60 days starts after start of OR less than or equal to 90 days starts before start of OR starts concurrent with measurement period, equals Yes, proceed to check sum greater than or equal to 210 days, Medication Active.
 - b. If the \$InitialADHDMedication, Medication Dispensed QDM data element, ADHD MEDICATIONS less than or equal to 60 days starts after start of OR less than or equal to 90 days starts before start of OR starts concurrent with measurement period, equals No, do not include in Initial Population 2. Stop processing.
4. Check Sum Greater Than or Equal to 210 Days, Medication Active:
 - a. If the Sum Greater Than or Equal to 210 Days, Medication Active QDM data element, ADHD MEDICATIONS (cumulative medication duration) starts after OR concurrent with start of \$InitialADHDMedication, Medication Dispensed QDM data element, ADHD MEDICATIONS equals Yes, proceed to check next \$Encounter, Encounter Performed.
 - b. If the Sum Greater Than or Equal to 210 Days, Medication Active QDM data element, ADHD MEDICATIONS (cumulative medication duration) starts after OR concurrent with start of \$InitialADHDMedication, Medication Dispensed QDM data element, ADHD MEDICATIONS equals No, do not include in Initial Population 2. Stop processing.
5. Check \$Encounter: Encounter Performed:
 - a. If the \$Encounter: Encounter Performed QDM data element, OFFICE VISIT, or QDM data element, HOME HEALTHCARE SERVICES, or the QDM data element, PREVENTIVE CARE – INTIAL OFFICE VISIT, 0 TO 17, or the QDM data element, PREVENTIVE CARE – ESTABLISHED OFFICE VISIT, 0 TO 17, or the QDM data element, FACE-TO-FACE INTERACTION, or the QDM data element, FACE-TO-FACE INTERACTION, during measurement period equals Yes, include in Initial Population 2.
 - b. If the \$Encounter: Encounter Performed QDM data element, OFFICE VISIT, or QDM data element, HOME HEALTHCARE SERVICES, or the QDM data element, PREVENTIVE CARE – INTIAL OFFICE VISIT, 0 TO 17, or the QDM data element,

PREVENTIVE CARE – ESTABLISHED OFFICE VISIT, 0 TO 17, or the QDM data element, FACE-TO-FACE INTERACTION, or the QDM data element, FACE-TO-FACE INTERACTION, during measurement period equals No, do not include in Initial Population 2. Stop processing

6. Start Denominator 2

- a. Denominator equals the Initial Population 2. Denominator 2 is represented by the Letter b in the sample calculation listed at the end of this document. Letter b equals 10 patients in the sample calculation.

7. Start Denominator Exclusions 2:

8. Check Diagnosis Active:

- a. If the Diagnosis Active QDM data element, NARCOLEPSY starts before end of measurement period equals Yes, include Denominator Exclusion Count box. Exclusions are represented by the Letter c1 in the sample calculation listed at the end of Initial Population. Letter c1 equals 2 patients in the sample calculation.
- b. If the Diagnosis Active QDM data element, NARCOLEPSY starts before end of measurement period equals No, proceed to check Diagnosis Active.

9. Check Diagnosis Active:

- a. If the Diagnosis Active QDM data element, MENTAL HEALTH DIAGNOSES (ordinality: principal) OR SUBSTANCE ABUSE (ordinality: principal) overlaps QDM data element \$InpEnc300DaysAfterFirstMed (Encounter Performed, INPATIENT ENCOUNTER less than or equal to 300 days starts after end of \$InitialADHDMedication [QDM data element, Medication Dispensed, ADHD MEDICATIONS, less than or equal to 60 days starts after start of OR less than or equal to 90 days starts before start of OR starts concurrent with measurement period]), equals Yes include Denominator Exclusion 2 count box. Exclusions are represented by the Letter c1 in the sample calculation listed at the end of Initial Population. Letter c1 equals 2 patients in the sample calculation.
- b. If the Diagnosis Active QDM data element MENTAL HEALTH DIAGNOSES (ordinality: principal) OR SUBSTANCE ABUSE (ordinality: principal) overlaps QDM data element \$InpEnc300DaysAfterFirstMed (Encounter Performed, INPATIENT ENCOUNTER less than or equal to 300 days starts after end of \$InitialADHDMedication [QDM data element, Medication Dispensed, ADHD MEDICATIONS, less than or equal to 60 days starts after start of OR less than or equal to 90 days starts before start of OR starts concurrent with measurement period]), equals No, check Medication Active.

10. Check Medication Active:

- a. If the Medication Active QDM data element, ADHD MEDICATIONS less than or equal to 120 days starts before start of Occurrence A of \$InitialADHDMedication, (QDM data element, Medication Dispensed, ADHD MEDICATIONS, less than or equal to 60 days starts after start of OR less than or equal to 90 days starts before start of OR

starts concurrent with measurement period), equals Yes, include Denominator Exclusion 2 count box. Exclusions are represented by the letter c² in the sample calculation listed at the end of Initial Population. Letter c² equals 2 patients in the sample calculation.

- b. If the Medication Active QDM data element, ADHD MEDICATIONS less than or equal to 120 days starts before start of Occurrence A of \$InitialADHDMedication, (QDM data element, Medication Dispensed, ADHD MEDICATIONS, less than or equal to 60 days starts after start of OR less than or equal to 90 days starts before start of OR starts concurrent with measurement period), equals No, proceed to check \$Encounter30DaysAfterInitialADHDMed, Encounter Performed.

11. Start Numerator 2

12. Check \$Encounter30DaysAfterInitialADHDMed: Encounter Performed:

- a. If \$Encounter30DaysAfterInitialADHDMed: Encounter Performed, QDM data element OFFICE VISIT, or QDM data element Hospital Observation Care – Initial, or QDM data element Preventive Care - Established Office Visit, 0 to 17, or QDM data element Preventive Care Services - Group Counseling, or QDM data element Preventive Care Services-Individual Counseling, or QDM data element Behavioral Health Follow-up Visit, or QDM data element Face-to-Face Interaction, or QDM data element Psychotherapy and Pharmacologic Management (facility location: 'Ambulatory'), or QDM data element Discharge Services- Observation Care, or QDM data element Outpatient Consultation, or QDM data element Home Healthcare Services, or QDM data element Preventive Care- Initial Office Visit, 0 to 17, or QDM data element psych visit – psychotherapy, or QDM data element psych visit – diagnostic evaluation, less than or equal to 30 days ends after end of \$InitialADHDMedication (QDM data element, Medication Dispensed, ADHD MEDICATIONS, less than or equal to 60 days starts after start of OR less than or equal to 90 days starts before start of OR starts concurrent with measurement period), equals Yes, proceed to check \$EncounterAfterInitialMedication, Encounter Performed.
- b. If \$Encounter30DaysAfterInitialADHDMed: Encounter Performed, QDM data element, OFFICE VISIT, or QDM data element Hospital Observation Care – Initial, or QDM data element Preventive Care - Established Office Visit, 0 to 17, or QDM data element Preventive Care Services - Group Counseling, or QDM data element Preventive Care Services-Individual Counseling, or QDM data element Behavioral Health Follow-up Visit, or QDM data element Face-to-Face Interaction, or QDM data element Psychotherapy and Pharmacologic Management (facility location: 'Ambulatory'), or QDM data element Discharge Services- Observation Care, or QDM data element Outpatient Consultation, or QDM data element Home Healthcare Services, or QDM data element Preventive Care- Initial Office Visit, 0 to 17, or QDM data element psych visit – psychotherapy, or QDM data element psych visit – diagnostic evaluation, less than or equal to 30 days ends after end of \$InitialADHDMedication (QDM data element, Medication Dispensed, ADHD MEDICATIONS, less than or equal to 60 days starts after start of OR less than or

equal to 90 days starts before start of OR starts concurrent with measurement period), equals No, include in the No/Missing Numerator Data Submitted count and stop processing for Numerator 2.

13. Check Sum Greater Than or Equal to 2, \$EncounterAfterInitialMedication: Encounter Performed:

- a. If the Sum Greater Than or Equal to 2, \$EncounterAfterInitialMedication: Encounter Performed QDM data element, OFFICE VISIT, or QDM data element HOSPITAL OBSERVATION CARE – INITIAL, or QDM data element PREVENTIVE CARE - ESTABLISHED OFFICE VISIT, 0 TO 17, or QDM data element PREVENTIVE CARE SERVICES - GROUP COUNSELING, or QDM data element PREVENTIVE CARE SERVICES-INDIVIDUAL COUNSELING, or QDM data element BEHAVIORAL HEALTH FOLLOW-UP VISIT, or QDM data element FACE-TO-FACE INTERACTION, or QDM data element PSYCHOTHERAPY AND PHARMACOLOGIC MANAGEMENT (facility location: 'Ambulatory'), or QDM data element DISCHARGE SERVICES- OBSERVATION CARE, or QDM data element OUTPATIENT CONSULTATION, or QDM data element HOME HEALTHCARE SERVICES, or QDM data element PREVENTIVE CARE- INITIAL OFFICE VISIT, 0 TO 17, or QDM data element PSYCH VISIT – PSYCHOTHERAPY, or QDM data element PSYCH VISIT – DIAGNOSTIC EVALUATION greater than or equal to 31 days AND less than or equal to 300 days ends after end of \$InitialADHDMedication (QDM data element, Medication Dispensed, ADHD MEDICATIONS, less than or equal to 60 days starts after start of OR less than or equal to 90 days starts before start of OR starts concurrent with measurement period), equals Yes, include in Numerator 2 count. Numerator 2 is represented by Letter a in the sample calculation listed at the end of this document. Letter a equals 4 patients in the sample calculation.
- b. If the Sum Greater Than or Equal to 2, \$EncounterAfterInitialMedication: Encounter Performed Encounter Performed, QDM data element OFFICE VISIT, or QDM data element Hospital Observation Care – Initial, or QDM data element Preventive Care - Established Office Visit, 0 to 17, or QDM data element Preventive Care Services - Group Counseling, or QDM data element Preventive Care Services-Individual Counseling, or QDM data element Behavioral Health Follow-up Visit, or QDM data element Face-to-Face Interaction, or QDM data element Psychotherapy and Pharmacologic Management (facility location: 'Ambulatory'), or QDM data element Discharge Services- Observation Care, or QDM data element Outpatient Consultation, or QDM data element Home Healthcare Services, or QDM data element Preventive Care- Initial Office Visit, 0 to 17, or QDM data element psych visit – psychotherapy, or QDM data element psych visit – diagnostic evaluation greater than or equal to 31 days AND less than or equal to 300 days ends after end of \$InitialADHDMedication (QDM data element, Medication Dispensed, ADHD MEDICATIONS, less than or equal to 60 days starts after start of OR less than or equal to 90 days starts before start of OR starts concurrent with measurement period), equals No, \$EncounterAfterInitialMedication Encounter Performed: TELEHEALTH SERVICES OR TELEPHONE MANAGEMENT.

14. Check EncounterAfterInitialMedication Encounter Performed: TELEHEALTH SERVICES OR TELEPHONE MANAGEMENT:

- a. If the \$EncounterAfterInitialMedication Encounter Performed QDM data element, Telehealth Services OR TELEPHONE MANAGEMENT greater than or equal to 31 days AND less than or equal to 300 days ends after end of \$InitialADHDMedication (QDM data element, Medication Dispensed, ADHD MEDICATIONS, less than or equal to 60 days starts after start of OR less than or equal to 90 days starts before start of OR starts concurrent with measurement period), equals Yes, include in Numerator count. Numerator is represented by Letter a in the sample calculation listed at the end of this document. Letter a equals 4 patients in the sample calculation.
- b. If \$EncounterAfterInitialMedication Encounter Performed QDM data element Telehealth Services OR TELEPHONE MANAGEMENT greater than or equal to 31 days AND less than or equal to 300 days ends after end of \$InitialADHDMedication (QDM data element, Medication Dispensed, ADHD MEDICATIONS, less than or equal to 60 days starts after start of OR less than or equal to 90 days starts before start of OR starts concurrent with measurement period), equals No, include in the No/Missing Numerator Data Submitted count. Stop Processing.

SAMPLE CALCULATION: *Combination of Initial Population 1; Denominator 1; Numerator 1*

Performance Rate =

$$\frac{\text{Numerator (a=4 patients)}}{\text{Denominator (b=10 patients) - Denominator Exclusions (c}^1\text{ + c}^2\text{ = 4 patients) - Denominator Exceptions (N/A)}} = 66.67\%$$