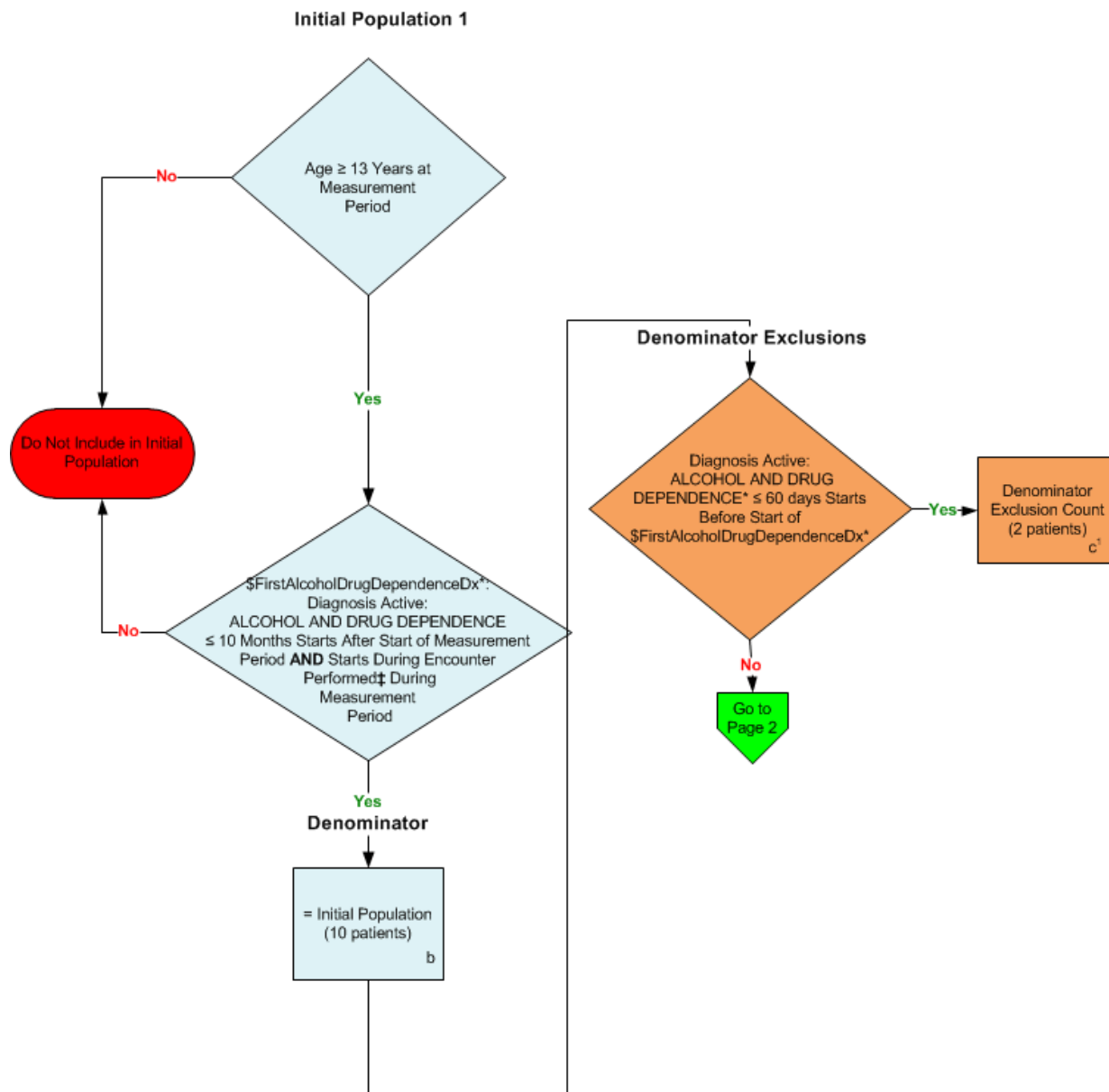


2014 eCQM Flow
Measure Identifier: CMS137v4

NQF 0004: Initiation and Engagement of Alcohol and Other Drug Dependence Treatment

This eCQM requires the reporting of two Performance Rates with two separate populations

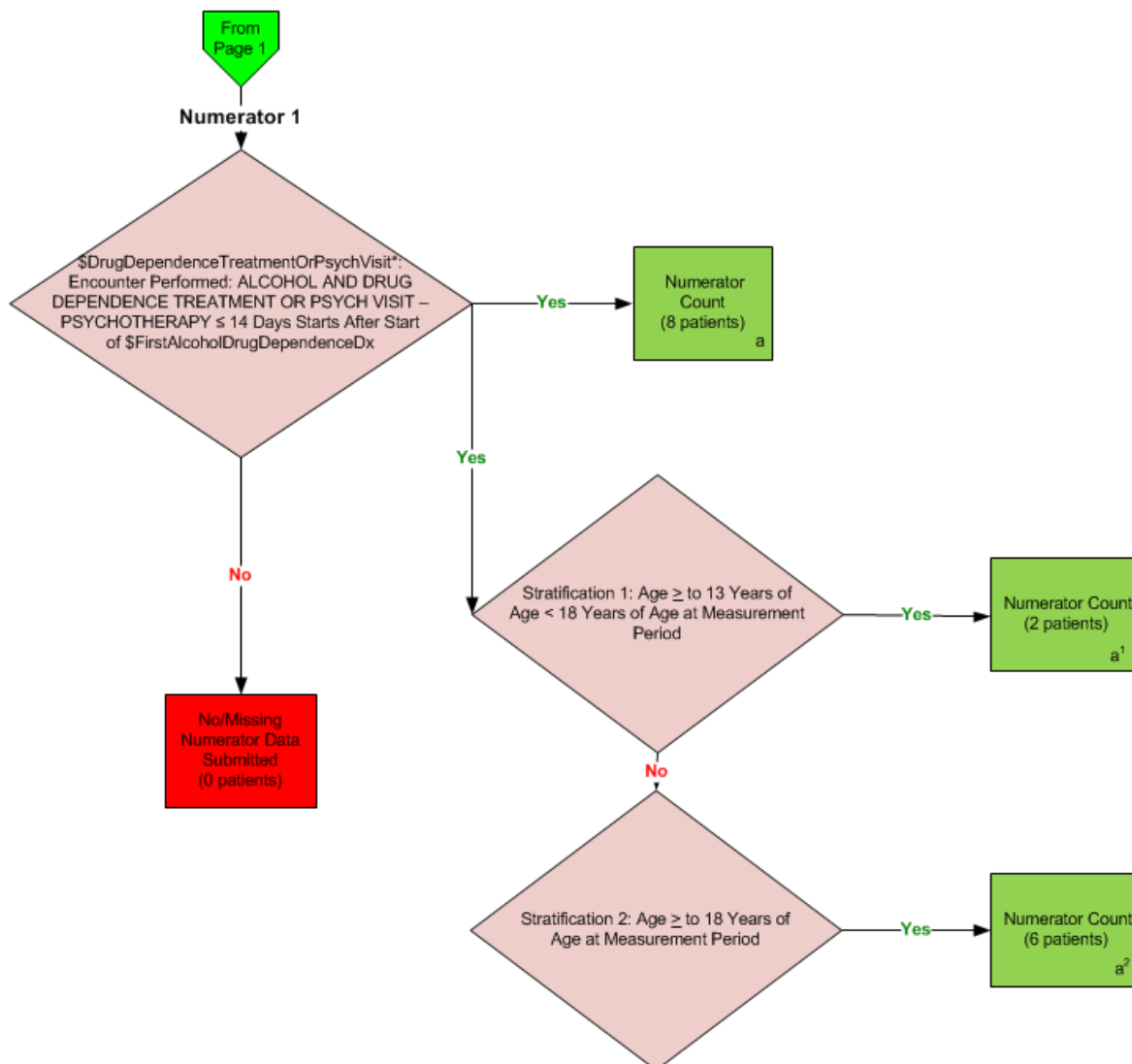


*Please refer to the specific section of the eCQM to identify the QDM data elements and associated value sets for use in reporting this eCQM.

‡ For a listing of appropriate encounters, please refer to the Population Criteria section of the eCQM and associated value sets as specific data elements have not been listed.

2014 eCQM Flow
Measure Identifier: CMS137v4

NQF 0004: Initiation and Engagement of Alcohol and Other Drug Dependence Treatment



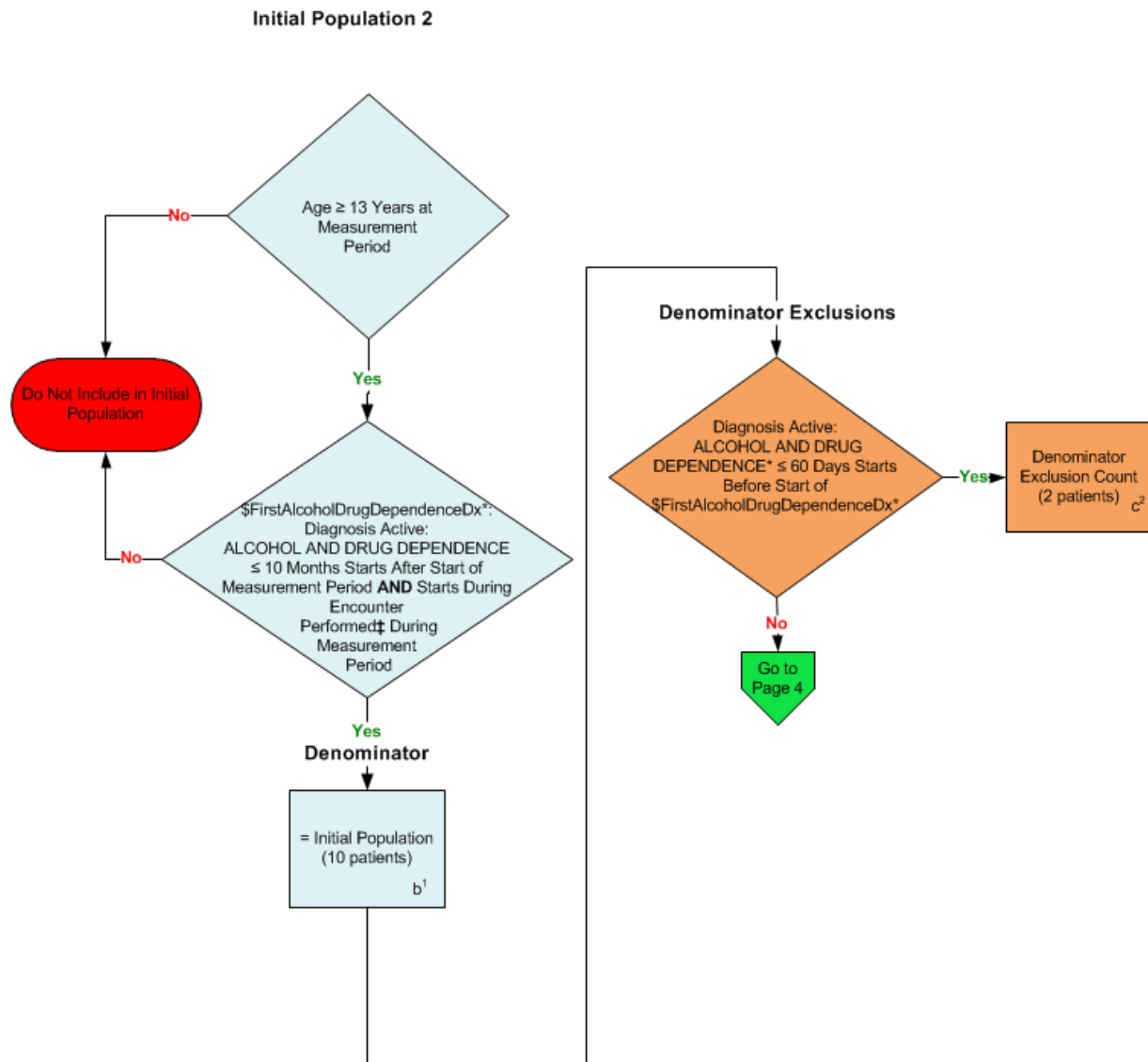
*Please refer to the specific section of the eCQM to identify the QDM data elements and associated value sets for use in reporting this eCQM.

SAMPLE CALCULATION: Combination of Initial Population; Denominator; Numerator 1 with Stratification		
Performance Rate =		
Numerator (a = 8 patients)		= 100.00%
Denominator (b=10 patients) – Denominator Exclusions (c=2 patients) – Denominator Exceptions (N/A)		
Stratification 1		
Numerator (a¹ = 2 patients)		= 25.00%
Denominator (b=10 patients) – Denominator Exclusions (c=2 patients) – Denominator Exceptions (N/A)		
Stratification 2		
Numerator (a² = 6 patients)		= 75.00%
Denominator (b=10 patients) – Denominator Exclusions (c=2 patients) – Denominator Exceptions (N/A)		

2014 eCQM Flow
Measure Identifier: CMS137v4

NQF 0004: Initiation and Engagement of Alcohol and Other Drug Dependence Treatment

This eCQM requires the reporting of two Performance Rates with two separate populations

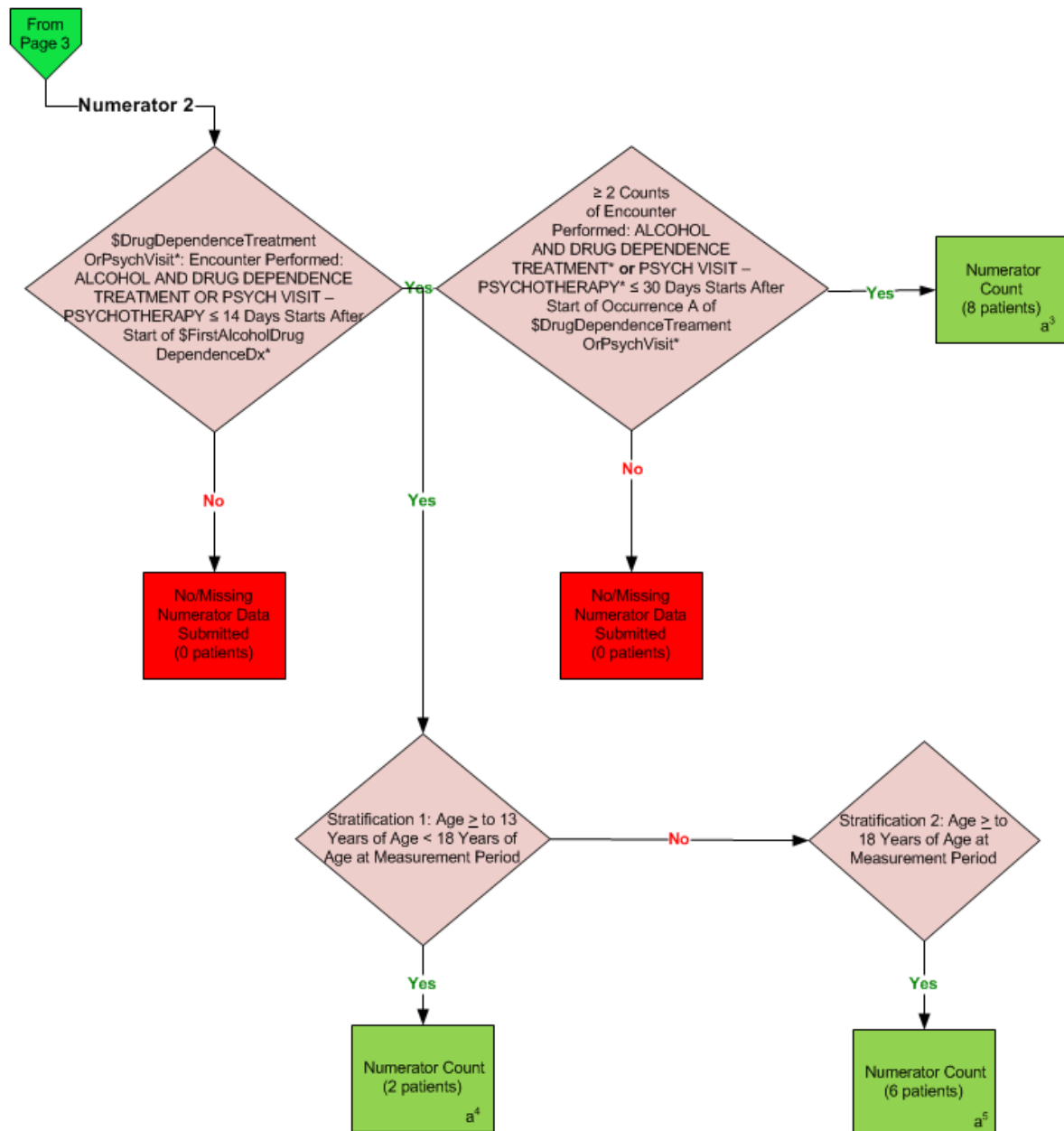


*Please refer to the specific section of the eCQM to identify the QDM data elements and associated value sets for use in reporting this eCQM.

‡ For a listing of appropriate encounters, please refer to the Population Criteria of the eCQM and associated value sets as specific data elements have not been listed.

2014 eCQM Flow
Measure Identifier: CMS137v4

NQF 0004: Initiation and Engagement of Alcohol and Other Drug Dependence Treatment



*Please refer to the specific section of the eCQM to identify the QDM data elements and associated value sets for use in reporting this eCQM.

SAMPLE CALCULATION: Combination of Initial Population; Denominator; Numerator 2 with Stratification		
Performance Rate =		
Numerator (a³ = 8 patients)		= 100.00%
Denominator (b¹=10 patients) – Denominator Exclusions (c=2 patients) – Denominator Exceptions (N/A)		
Stratification 1		
Numerator (a⁴ = 2 patients)		= 25.00%
Denominator (b¹=10 patients) – Denominator Exclusions (c=2 patients) – Denominator Exceptions (N/A)		
Stratification 2		
Numerator (a⁵ = 6 patients)		= 75.00%
Denominator (b¹=10 patients) – Denominator Exclusions (c=2 patients) – Denominator Exceptions (N/A)		

2014 eCQM Flows
Measure Identifier: CMS137v4
NQF 0004: Initiation and Engagement of Alcohol and Other Drug Dependence
Treatment

This eCQM requires the reporting of two Performance Rates

Please refer to the specific section of the eCQM to identify the Population Criteria and associated value sets for use in reporting this eCQM.

1. Start Initial Population 1
2. Check Age:
 - a. If the AGE greater than or equal to 13 years at measurement period equals No, do not include in Initial Population. Stop Processing.
 - b. If the AGE greater than or equal to 13 years at measurement period equals Yes, proceed to check \$FirstAlcoholDrugDependenceDx.
3. Check \$FirstAlcoholDrugDependenceDx:
 - a. If \$FirstAlcoholDrugDependenceDx Diagnosis Active QDM data element, ALCOHOL AND DRUG DEPENDENCE, less than or equal to 10 months starts after start of measurement period AND starts during Encounter Performed QDM data element, OFFICE VISIT, or EMERGENCY DEPARTMENT VISIT, or DETOXIFICATION VISIT, or HOSPITAL OBSERVATION CARE – INITIAL, or HOSPITAL INPATIENT VISIT – INITIAL, or DISCHARGE SERVICES - HOSPITAL INPATIENT SAME DAY DISCHARGE, or DISCHARGE SERVICES - HOSPITAL INPATIENT during measurement period equals Yes, include in Initial Population.
 - b. \$FirstAlcoholDrugDependenceDx Diagnosis Active QDM data element, ALCOHOL AND DRUG DEPENDENCE, less than or equal to 10 months starts after start of measurement period AND starts during Encounter Performed QDM data element, OFFICE VISIT, or EMERGENCY DEPARTMENT VISIT, or DETOXIFICATION VISIT, or HOSPITAL OBSERVATION CARE – INITIAL, or HOSPITAL INPATIENT VISIT – INITIAL, or DISCHARGE SERVICES - HOSPITAL INPATIENT SAME DAY DISCHARGE, or DISCHARGE SERVICES - HOSPITAL INPATIENT during measurement period equals No, do not include in the Initial Population.
4. Start Denominator
 - a. Denominator equals the Initial Population. Denominator is represented by Letter b in the sample calculation listed at the end of this document. Letter b equals 10 patients in the sample calculation.
5. Start Denominator Exclusions
6. Check for Diagnosis Active:

- a. If the Diagnosis Active QDM data element, ALCOHOL AND DRUG DEPENDENCE, less than or equal to 60 days starts before start of \$FirstAlcoholDrugDependenceDx (Diagnosis Active QDM data element, ALCOHOL AND DRUG DEPENDENCE, less than or equal to 10 months starts after start of measurement period AND starts during Encounter Performed QDM data element, OFFICE VISIT, or EMERGENCY DEPARTMENT VISIT, or DETOXIFICATION VISIT, or HOSPITAL OBSERVATION CARE – INITIAL, or HOSPITAL INPATIENT VISIT – INITIAL, or DISCHARGE SERVICES - HOSPITAL INPATIENT SAME DAY DISCHARGE, or DISCHARGE SERVICES - HOSPITAL INPATIENT during measurement period) equals Yes, include in Denominator Exclusions count. Denominator Exclusion is represented by letter c¹ in the sample calculation listed at the end of this document. Letter c¹ equals 2 patients in the sample calculation.
 - b. If the Diagnosis Active QDM data element, ALCOHOL AND DRUG DEPENDENCE, less than or equal to 60 days starts before start of \$FirstAlcoholDrugDependenceDx, (Diagnosis Active QDM data element, ALCOHOL AND DRUG DEPENDENCE, less than or equal to 10 months starts after start of measurement period AND starts during Encounter Performed QDM data element, OFFICE VISIT, or EMERGENCY DEPARTMENT VISIT, or DETOXIFICATION VISIT, or HOSPITAL OBSERVATION CARE – INITIAL, or HOSPITAL INPATIENT VISIT – INITIAL, or DISCHARGE SERVICES - HOSPITAL INPATIENT SAME DAY DISCHARGE, or DISCHARGE SERVICES - HOSPITAL INPATIENT during measurement period) equals No, include in the Eligible Population and proceed to Numerator 1.
7. Start Numerator 1
8. Check \$DrugDependenceTreatmentOrPsychVisit, Encounter Performed:
 - a. If \$DrugDependenceTreatmentOrPsychVisit Encounter Performed QDM data element, ALCOHOL AND DRUG DEPENDENCE TREATMENT or PSYCH VISIT - PSYCHOTHERAPY, less than or equal to 14 days starts after start of \$FirstAlcoholDrugDependenceDx (Diagnosis Active QDM data element, ALCOHOL AND DRUG DEPENDENCE, less than or equal to 10 months starts after start of measurement period AND starts during Encounter Performed QDM data element, OFFICE VISIT, or EMERGENCY DEPARTMENT VISIT, or DETOXIFICATION VISIT, or HOSPITAL OBSERVATION CARE – INITIAL, or HOSPITAL INPATIENT VISIT – INITIAL, or DISCHARGE SERVICES - HOSPITAL INPATIENT SAME DAY DISCHARGE, or DISCHARGE SERVICES - HOSPITAL INPATIENT during measurement period) equals yes, include in Numerator Count. Numerator is represented by Letter a in the sample calculation listed at the end of Population 1. Letter a equals 8 patients in the sample calculation. Continue to Stratification 1.
 - b. If \$DrugDependenceTreatmentOrPsychVisit Encounter Performed QDM data element, ALCOHOL AND DRUG DEPENDENCE TREATMENT or PSYCH VISIT - PSYCHOTHERAPY, less than or equal to 14 days starts after start of \$FirstAlcoholDrugDependenceDx (Diagnosis Active QDM data element, ALCOHOL AND DRUG DEPENDENCE, less than or equal to 10 months starts after start of measurement period AND starts during Encounter Performed QDM data element,

OFFICE VISIT, or EMERGENCY DEPARTMENT VISIT, or DETOXIFICATION VISIT, or HOSPITAL OBSERVATION CARE – INITIAL, or HOSPITAL INPATIENT VISIT – INITIAL, or DISCHARGE SERVICES - HOSPITAL INPATIENT SAME DAY DISCHARGE, or DISCHARGE SERVICES - HOSPITAL INPATIENT during measurement period) equals No, include in No/Missing Data Submitted count. Continue to Initial Population 2.

9. Start Stratification 1

- a. If the AGE is greater than or equal 13 years and less than 18 years at measurement period equals Yes, include in Numerator Count. Numerator is represented by Letter a¹ in the sample calculation listed at the end of this document. Letter a¹ equals 2 patients in the sample calculation. Continue to Initial Population 2.
- b. If the AGE is greater than or equal 13 years and less than 18 years at measurement period equals No, continue on to Stratification 2.

10. Start Stratification 2:

- a. If the AGE is greater than or equal to 18 years at measurement period equals Yes include in Numerator Count. Numerator is represented by Letter a² in the sample calculation listed at the end of this document. Letter a² equals 6 patients in the sample calculation. Continue to Initial Population 2.

SAMPLE CALCULATION: *Combination of Initial Population; Denominator; Numerator 1 with Stratification*

Performance Rate =

$$\frac{\text{Numerator (a = 8 patients)}}{\text{Denominator (b=10 patients) – Denominator Exclusions (c=2 patients) – Denominator Exceptions (N/A)}} = 100.00\%$$

Stratification 1

$$\frac{\text{Numerator (a}^1\text{ = 2 patients)}}{\text{Denominator (b=10 patients) – Denominator Exclusions (c=2 patients) – Denominator Exceptions (N/A)}} = 25.00\%$$

Stratification 2

$$\frac{\text{Numerator (a}^2\text{ = 6 patients)}}{\text{Denominator (b=10 patients) – Denominator Exclusions (c=2 patients) – Denominator Exceptions (N/A)}} = 75.00\%$$

1. Start Initial Population 2
2. Check Patient Characteristic Age:
 - a. If the AGE greater than or equal to 13 years at measurement period equals No, do not include in Initial Population. Stop Processing.
 - b. If the AGE greater than or equal to 13 years at measurement period equals Yes, proceed to check \$FirstAlcoholDrugDependenceDx.
3. Check \$FirstAlcoholDrugDependenceDx:
 - a. a. If \$FirstALcoholDrugDependenceDx Diagnosis Active QDM data element, ALCOHOL AND DRUG DEPENDENCE, less than or equal to 10 months starts after start of measurement period, AND starts during Encounter Performed QDM data element, OFFICE VISIT, or EMERGENCY DEPARTMENT VISIT, or DETOXIFICATION VISIT, or HOSPITAL OBSERVATION CARE – INITIAL, or HOSPITAL INPATIENT VISIT – INITIAL, or DISCHARGE SERVICES - HOSPITAL INPATIENT SAME DAY DISCHARGE, or DISCHARGE SERVICES - HOSPITAL INPATIENT during measurement period equals Yes, include in Initial Population.
 - b. b. If \$FirstALcoholDrugDependenceDx Diagnosis Active QDM data element, ALCOHOL AND DRUG DEPENDENCE, less than or equal to 10 months starts after start of measurement period, AND starts during Encounter Performed QDM data element, OFFICE VISIT, or EMERGENCY DEPARTMENT VISIT, or DETOXIFICATION VISIT, or HOSPITAL OBSERVATION CARE – INITIAL, or HOSPITAL INPATIENT VISIT – INITIAL, or DISCHARGE SERVICES - HOSPITAL INPATIENT SAME DAY DISCHARGE, or DISCHARGE SERVICES - HOSPITAL INPATIENT during measurement period equals No, do not include in the Initial Population. Stop Processing.
4. Start Denominator
 - a. Denominator equals the Initial Population. Denominator is represented by Letter b1 in the sample calculation listed at the end of this document. Letter b1 equals 10 patients in the sample calculation.
5. Start Denominator Exclusions
6. Check for Diagnosis Active:
 - a. If the Diagnosis Active QDM data element, ALCOHOL AND DRUG DEPENDENCE, less than or equal to 60 days starts before start of \$FirstAlcoholDrugDependenceDx, (Diagnosis Active QDM data element, ALCOHOL AND DRUG DEPENDENCE, less than or equal to 10 months starts after start of measurement period, AND starts during Encounter Performed QDM data element, OFFICE VISIT, or EMERGENCY DEPARTMENT VISIT, or DETOXIFICATION VISIT, or HOSPITAL OBSERVATION CARE – INITIAL, or HOSPITAL INPATIENT VISIT – INITIAL, or DISCHARGE SERVICES - HOSPITAL INPATIENT SAME DAY DISCHARGE, or DISCHARGE SERVICES - HOSPITAL INPATIENT during measurement period) equals Yes, include in Denominator Exclusions count. Denominator Exclusion is represented by

Letter c2 in the sample calculation listed at the end of this document. Letter c2 equals 2 patients in the sample calculation.

- b. If the Diagnosis Active QDM data element, ALCOHOL AND DRUG DEPENDENCE, less than or equal to 60 days starts before start of \$FirstAlcoholDrugDependenceDx, (Diagnosis Active QDM data element, ALCOHOL AND DRUG DEPENDENCE, less than or equal to 10 months starts after start of measurement period, AND starts during Encounter Performed QDM data element, OFFICE VISIT, or EMERGENCY DEPARTMENT VISIT, or DETOXIFICATION VISIT, or HOSPITAL OBSERVATION CARE – INITIAL, or HOSPITAL INPATIENT VISIT – INITIAL, or DISCHARGE SERVICES - HOSPITAL INPATIENT SAME DAY DISCHARGE, or DISCHARGE SERVICES - HOSPITAL INPATIENT during measurement period) equals No, check Numerator 2.
7. Start Numerator 2
 8. Check \$DrugDependenceTreatmentOrPsychVisit:
 - a. If the \$DrugDependenceTreatmentOrPsychVisit Encounter Performed QDM data element, ALCOHOL AND DRUG DEPENDENCE TREATMENT OR PSYCHVISIT PSYCHOTHERAPY, less than or equal to 14 days starts after start of \$FirstAlcoholDrugDependenceDx (Diagnosis Active QDM data element, ALCOHOL AND DRUG DEPENDENCE, less than or equal to 10 months starts after start of measurement period, AND starts during Encounter Performed QDM data element, OFFICE VISIT, or EMERGENCY DEPARTMENT VISIT, or DETOXIFICATION VISIT, or HOSPITAL OBSERVATION CARE – INITIAL, or HOSPITAL INPATIENT VISIT – INITIAL, or DISCHARGE SERVICES - HOSPITAL INPATIENT SAME DAY DISCHARGE, or DISCHARGE SERVICES - HOSPITAL INPATIENT during measurement period) equals Yes, Encounter Performed, count greater than or equal to 2 and Stratification 1.
 - b. If the \$DrugDependenceTreatmentOrPsychVisit Encounter Performed QDM data element, ALCOHOL AND DRUG DEPENDENCE TREATMENT OR PSYCHVISIT PSYCHOTHERAPY, less than or equal to 14 days starts after start of \$FirstAlcoholDrugDependenceDx (Diagnosis Active QDM data element, ALCOHOL AND DRUG DEPENDENCE, less than or equal to 10 months starts after start of measurement period, AND starts during Encounter Performed QDM data element, OFFICE VISIT, or EMERGENCY DEPARTMENT VISIT, or DETOXIFICATION VISIT, or HOSPITAL OBSERVATION CARE – INITIAL, or HOSPITAL INPATIENT VISIT – INITIAL, or DISCHARGE SERVICES - HOSPITAL INPATIENT SAME DAY DISCHARGE, or DISCHARGE SERVICES - HOSPITAL INPATIENT during measurement period) equals No, include in No/Missing Numerator Data Submitted. Stop Processing.
 9. Check Count greater than or equal to 2, Encounter Performed:
 - a. If count greater than or equal to 2 of Encounter Performed QDM data element, ALCOHOL AND DRUG DEPENDENCE TREATMENT, or Encounter Performed, PSYCH VISIT – PSYCHOTHERAPY, less than or equal 30 days starts after start of

- Occurrence A of \$DrugDependenceTreatmentOrPsychVisit (Encounter Performed QDM data element, ALCOHOL AND DRUG DEPENDENCE TREATMENT OR PSYCHVISIT PSYCHOTHERAPY, less than or equal to 14 days starts after start of \$FirstAlcoholDrugDependenceDx [Diagnosis Active QDM data element, ALCOHOL AND DRUG DEPENDENCE, less than or equal to 10 months starts after start of measurement period, AND starts during Encounter Performed QDM data element, OFFICE VISIT, or EMERGENCY DEPARTMENT VISIT, or DETOXIFICATION VISIT, or HOSPITAL OBSERVATION CARE – INITIAL, or HOSPITAL INPATIENT VISIT – INITIAL, or DISCHARGE SERVICES - HOSPITAL INPATIENT SAME DAY DISCHARGE, or DISCHARGE SERVICES - HOSPITAL INPATIENT during measurement period]) equals, Yes, include in Numerator Count. Numerator is represented by Letter a³ in the sample calculation listed at the end of this document. Letter a³ equals 8 patients in the sample calculation. Continue to Stratification 1.
- b. If count greater than or equal to 2 of Encounter Performed QDM data element, ALCOHOL AND DRUG DEPENDENCE TREATMENT, or Encounter Performed, PSYCH VISIT – PSYCHOTHERAPY, less than or equal 30 days starts after start of Occurrence A of \$DrugDependenceTreatmentOrPsychVisit (Encounter Performed QDM data element, ALCOHOL AND DRUG DEPENDENCE TREATMENT OR PSYCHVISIT PSYCHOTHERAPY, less than or equal to 14 days starts after start of \$FirstAlcoholDrugDependenceDx [Diagnosis Active QDM data element, ALCOHOL AND DRUG DEPENDENCE, less than or equal to 10 months starts after start of measurement period, AND starts during Encounter Performed QDM data element, OFFICE VISIT, or EMERGENCY DEPARTMENT VISIT, or DETOXIFICATION VISIT, or HOSPITAL OBSERVATION CARE – INITIAL, or HOSPITAL INPATIENT VISIT – INITIAL, or DISCHARGE SERVICES - HOSPITAL INPATIENT SAME DAY DISCHARGE, or DISCHARGE SERVICES - HOSPITAL INPATIENT during measurement period]) equals No, include in No/Missing Data Submitted count. Stop Processing.

10. Start Stratification 1

- a. If the AGE is greater than or equal 13 years and less than 18 years at measurement period equals Yes, include in Numerator Count. Numerator is represented by Letter a⁴ in the sample calculation listed at the end of this document. Letter a⁴ equals 2 patients in the sample calculation. Continue to Stratification 2.
- b. If the AGE is greater than or equal 13 years and less than 18 years at measurement period equals No, continue on to Stratification 2.

11. Start Stratification 2:

- a. If the AGE is greater than or equal to 18 years at measurement period equals Yes, include in Numerator Count. Numerator is represented by Letter a⁵ in the sample calculation listed at the end of this document. Letter a⁵ equals 6 patients in the sample calculation. Stop Processing.
- b. If the AGE is greater than or equal to 18 years at measurement period equals No, Stop Processing.

SAMPLE CALCULATION: *Combination of Initial Population; Denominator; Numerator 2 with Stratification*

Performance Rate =

$$\frac{\text{Numerator (a}^3 = 8 \text{ patients)}}{\text{Denominator (b}^1 = 10 \text{ patients)} - \text{Denominator Exclusions (c=2 patients)} - \text{Denominator Exceptions (N/A)}} = 100.00\%$$

Stratification 1

$$\frac{\text{Numerator (a}^4 = 2 \text{ patients)}}{\text{Denominator (b}^1 = 10 \text{ patients)} - \text{Denominator Exclusions (c=2 patients)} - \text{Denominator Exceptions (N/A)}} = 25.00\%$$

Stratification 2

$$\frac{\text{Numerator (a}^5 = 6 \text{ patients)}}{\text{Denominator (b}^1 = 10 \text{ patients)} - \text{Denominator Exclusions (c=2 patients)} - \text{Denominator Exceptions (N/A)}} = 75.00\%$$