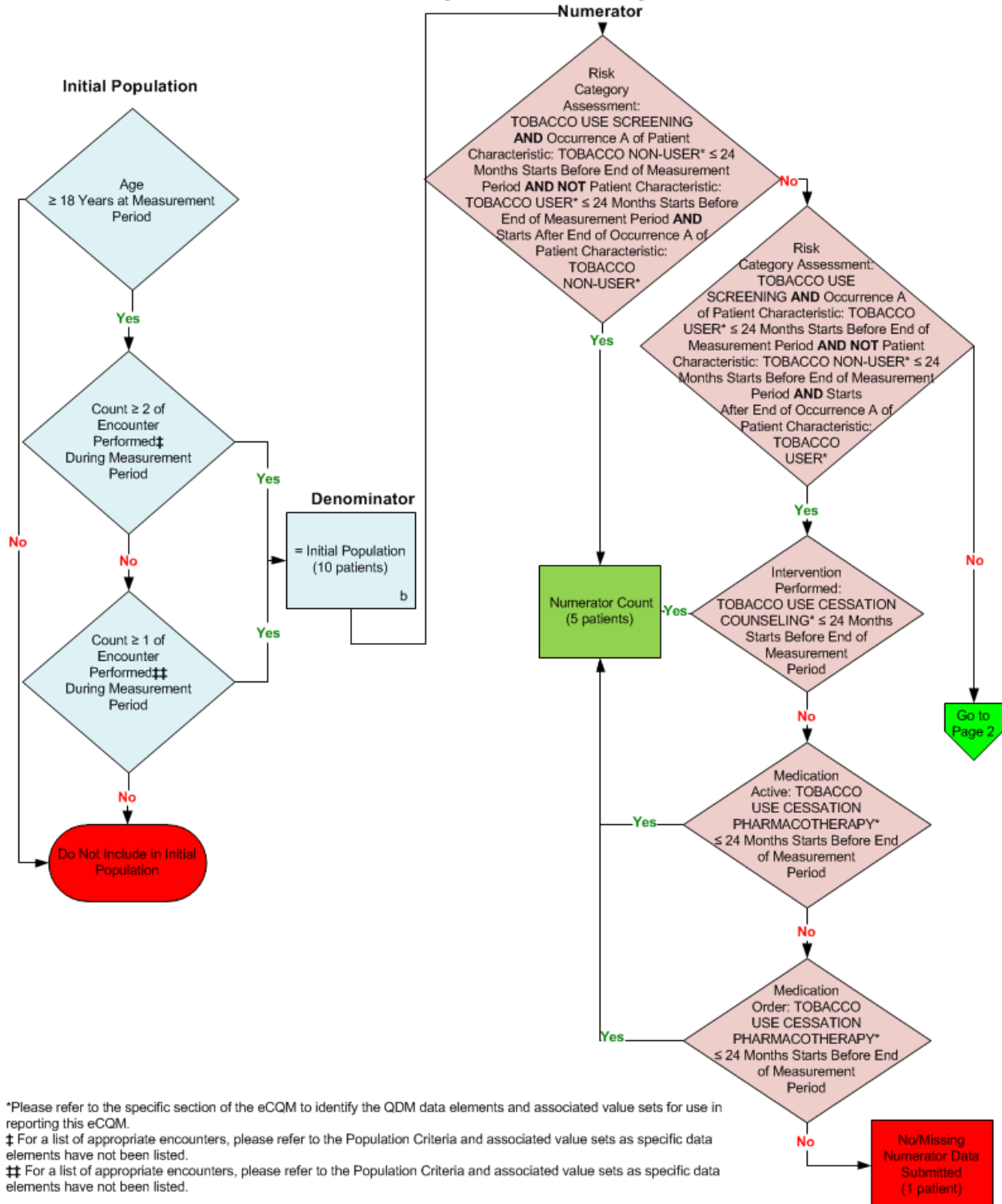


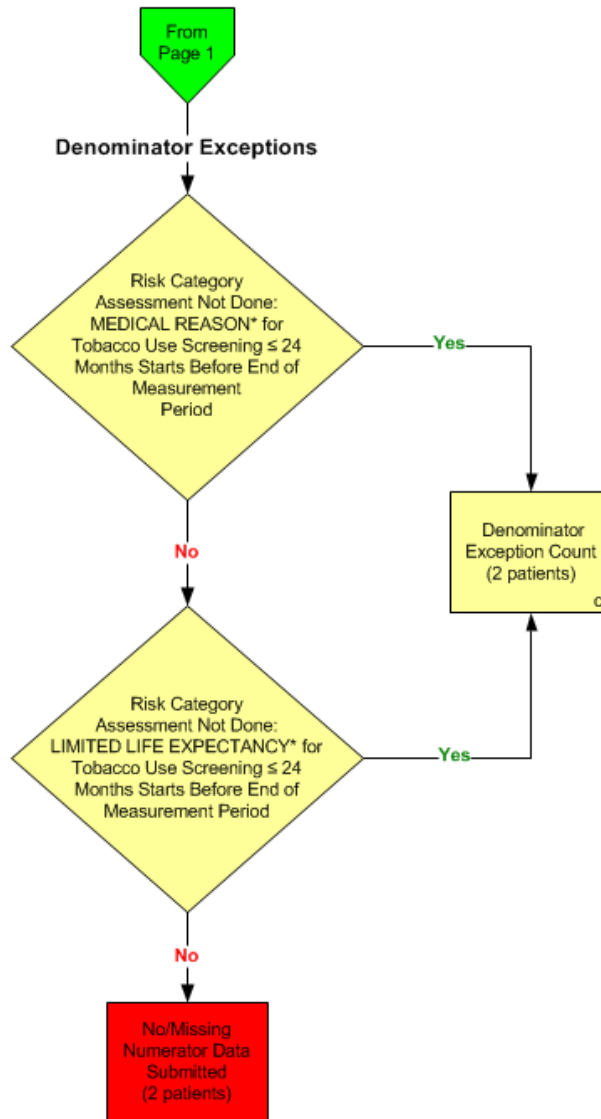
2014 eCQM Flow
Measure Identifier: CMS138v4

NQF 0028: Preventive Care and Screening: Tobacco Use: Screening and Cessation Intervention



2014 eCQM Flow
Measure Identifier: CMS138v4

NQF 0028: Preventive Care and Screening: Tobacco Use: Screening and Cessation Intervention



*Please refer to the specific section of the eCQM to identify the QDM data elements and associated value sets for use in reporting this eCQM.

SAMPLE CALCULATION:

Performance Rate =

$$\frac{\text{Numerator (a= 5 patients)}}{\text{Denominator (b=10 patients) – Denominator Exclusions (N/A) – Denominator Exceptions (c= 2 patients)}} = 62.50\%$$

2014 eCQM Flows
Measure Identifier: CMS138v4
NQF 0028: Preventive Care and Screening: Tobacco Use: Screening and Cessation
Intervention

Please refer to the specific section of the eCQM to identify the Population Criteria and associated value sets for use in reporting this eCQM.

1. Start Initial Population
2. Check Age:
 - a. If the AGE greater than or equal to 18 years at measurement period equals No, do not include in Initial Population. Stop Processing.
 - b. If the AGE greater than or equal to 18 years at measurement period equals Yes, continue processing and proceed to check Encounter Performed.
3. Check Encounter Performed: Total number of encounters must be greater than or equal to 2
 - a. If the Encounter Performed QDM data element, Psych Visit – DIAGNOSTIC EVALUATION, or Health and Behavioral Assessment – Initial, or Health and Behavioral Assessment, REASSESSMENT, or Health AND Behavioral Assessment – Individual, or Occupational Therapy Evaluation, or OFFICE VISIT, or Psych Visit - PSYCHOTHERAPY, or Psychoanalysis during measurement period equals Yes, include in Initial Population and proceed to check for another Encounter Performed until total number of encounters are greater than or equal to 2.
 - b. If the Encounter Performed QDM data element, Psych Visit - DIAGNOSTIC EVALUATION, Psych Visit – DIAGNOSTIC EVALUATION, or Health and Behavioral Assessment – Initial, or Health and Behavioral Assessment, REASSESSMENT, or Health AND Behavioral Assessment – Individual, or Occupational Therapy Evaluation, or OFFICE VISIT, or Psych Visit - PSYCHOTHERAPY, or Psychoanalysis during measurement period equals No, proceed to check next Encounter Performed.
4. Check Encounter Performed: Total number of encounters must be greater than or equal to 1
 - a. If the Encounter Performed QDM data element, PREVENTIVE CARE SERVICES – GROUP COUNSELING, OR PREVENTIVE CARE SERVICES – OTHER, OR PREVENTIVE CARE SERVICES – INTIAL OFFICE VISIT, 18 AND UP, PREVENTIVE CARE SERVICES – ESTABLISHED OFFICE VISIT, 18 AND UP, or PREVENTIVE CARE SERVICES – INDIVIDUAL COUNSELING, or FACE-TO-FACE INTERACTION, OR ANNUAL WELLNESS VISIT, OR SPEECH AND HEARING EVALUATION, during the measurement period equals Yes, include in the Initial Population and proceed to Denominator.

- b. If the Encounter Performed QDM data element, PREVENTIVE CARE SERVICES – GROUP COUNSELING, OR PREVENTIVE CARE SERVICES – OTHER, OR PREVENTIVE CARE SERVICES – INITIAL OFFICE VISIT, 18 AND UP, PREVENTIVE CARE SERVICES – ESTABLISHED OFFICE VISIT, 18 AND UP, or PREVENTIVE CARE SERVICES – INDIVIDUAL COUNSELING, or FACE-TO-FACE INTERACTION, OR ANNUAL WELLNESS VISIT, OR SPEECH AND HEARING EVALUATION, during the measurement period equals No, do not include in Initial Population.
5. Start Denominator
 - a. Denominator equals the Initial Population. Denominator is represented by Letter b in the sample calculation listed at the end of this document. Letter b equals 10 patients in the sample calculation.
6. Start Numerator
7. Check Risk Category Assessment:
 - a. If the Risk Category Assessment QDM data element TOBACCO USE SCREENING and Occurrence A of Patient Characteristic QDM data element TOBACCO NON-USER less than or equal to 24 months starts before end of measurement period AND NOT Patient Characteristic QDM data element TOBACCO USER less than or equal to 24 months starts before end of measurement period and starts after end of Occurrence A of Patient Characteristic TOBACCO NON-USER equals Yes, include in Numerator count. Numerator is represented by Letter a in the sample calculation listed at the end of this document. Letter a equals 5 patients in the sample calculation.
 - b. If the Risk Category Assessment QDM data element TOBACCO USE SCREENING and Occurrence A of Patient Characteristic QDM data element TOBACCO NON-USER less than or equal to 24 months starts before end of measurement period AND NOT Patient Characteristic QDM data element TOBACCO USER less than or equal to 24 months starts before end of measurement period and starts after end of Occurrence A of Patient Characteristic TOBACCO NON-USER equals No, proceed to check next Risk Category Assessment.
8. Check Risk Category Assessment:
 - a. If the Risk Category Assessment QDM data element TOBACCO USE SCREENING and Occurrence A of Patient Characteristic QDM data element TOBACCO USER less than or equal to 24 months starts before end of measurement period AND NOT Patient Characteristic QDM data element TOBACCO NON-USER less than or equal to 24 months starts before end of measurement period and starts after end of Occurrence A of Patient Characteristic QDM data element, TOBACCO USER equals Yes, proceed to check Intervention Performed.
 - b. If the Risk Category Assessment QDM data element TOBACCO USE SCREENING and Occurrence A of Patient Characteristic QDM data element TOBACCO USER less than or equal to 24 months starts before end of measurement period AND NOT

Patient Characteristic QDM data element TOBACCO NON-USER less than or equal to 24 months starts before end of measurement period and starts after end of Occurrence A of Patient Characteristic QDM data element, TOBACCO USER equals No, proceed to Denominator Exceptions.

9. Check Intervention Performed:

- a. If the Intervention Performed QDM data element TOBACCO USE CESSATION COUNSELING less than or equal to 24 months starts before end of measurement period equals Yes, include in Numerator Count. Numerator is represented by Letter a in the sample calculation listed at the end of this document. Letter a equals 5 patients in the sample calculation.
- b. If the Intervention Performed QDM data element TOBACCO USE CESSATION COUNSELING less than or equal to 24 months starts before end of measurement period equals No, proceed to check Medication Active.

10. Check Medication Active:

- a. If the Medication Active QDM data element TOBACCO USE CESSATION PHARMACOTHERAPY less than or equal to 24 months starts before end of measurement period equals Yes, include in Numerator Count. Numerator is represented by Letter a in the sample calculation listed at the end of this document. Letter a equals 5 patients in the sample calculation.
- b. If the Medication Active or Medication Order QDM data element TOBACCO USE CESSATION PHARMACOTHERAPY less than or equal to 24 months starts before end of measurement period equals No, proceed to check Medication Order.

11. Check Medication Order:

- a. If the Medication Order QDM data element TOBACCO USE CESSATION PHARMACOTHERAPY less than or equal to 24 months starts before end of measurement period equals Yes, include in Numerator Count. Numerator is represented by Letter a in the sample calculation listed at the end of this document. Letter a equals 5 patients in the sample calculation.
- b. If the Medication Active Order QDM data element TOBACCO USE CESSATION PHARMACOTHERAPY less than or equal to 24 months starts before end of measurement period equals No, include in the No/Missing Data Submitted. Stop Processing.

12. Start Denominator Exceptions

13. Check Risk Category Assessment Not Done:

- a. If the Risk Category Assessment Not Done QDM data element MEDICAL REASON for Tobacco Use Screening less than or equal to 24 months starts before end of measurement period equals Yes, include in Denominator Exceptions count. Denominator Exceptions is represented by Letter c in the sample calculation listed at the end of this document. Letter c equals 2 patients in the sample calculation.

- b. If the Risk Category Assessment Not Done QDM data element MEDICAL REASON for Tobacco Use Screening less than or equal to 24 months starts before end of measurement period equals No, proceed to check next Risk Category Assessment Not Done.

14. Check Risk Category Assessment Not Done:

- a. If the Risk Category Assessment Not Done QDM data element LIMITED LIFE EXPECTANCY for tobacco use screening less than or equal to 24 months starts before end of measurement period equals Yes, include in Denominator Exceptions count. Denominator Exception is represented by Letter c in the sample calculation listed at the end of this document. Letter c equals 2 patients in the sample calculation.
- b. If the Risk Category Assessment Not Done QDM data element LIMITED LIFE EXPECTANCY for tobacco use screening less than or equal to 24 months starts before end of measurement period equals No, include in the No/Missing Data Submitted. Stop Processing.

SAMPLE CALCULATION:

Performance Rate =
$$\frac{\text{Numerator (a= 5 patients)}}{\text{Denominator (b=10 patients) – Denominator Exclusions (N/A) – Denominator Exceptions (c= 2 patients)}} = 62.50\%$$