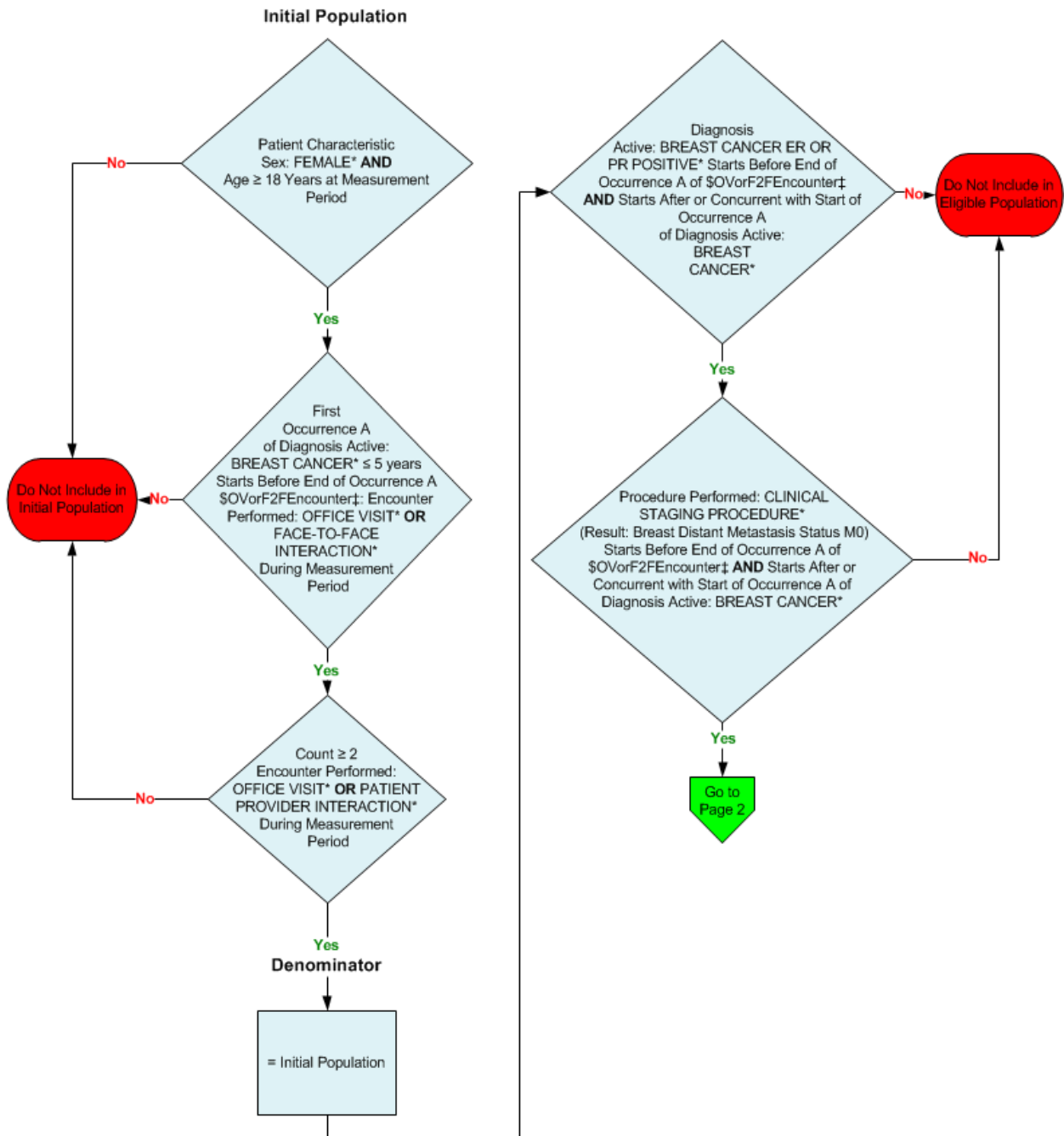


2014 eCQM Flow
Measure Identifier: CMS140v4

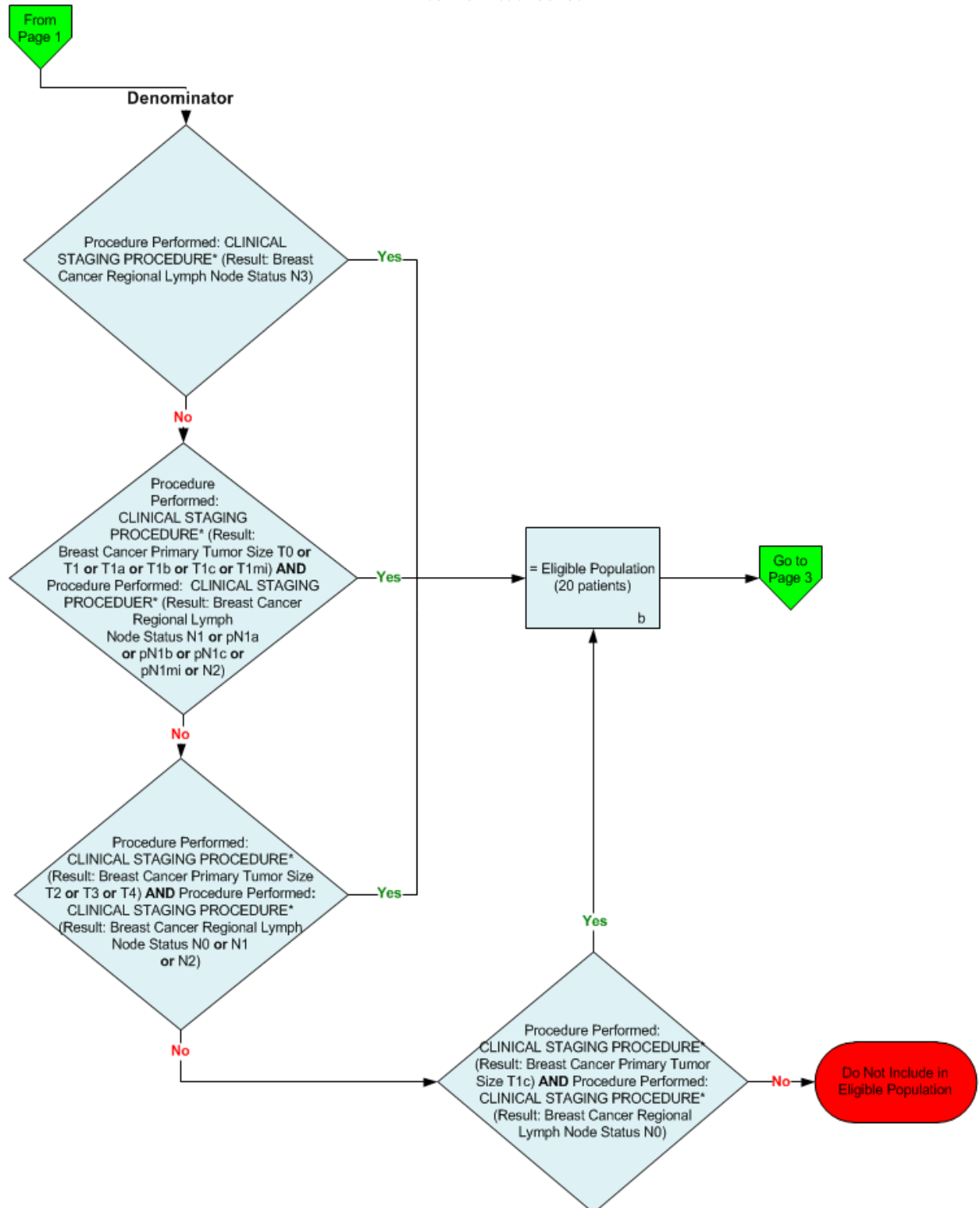
NQF 0387: Breast Cancer: Hormonal Therapy for Stage IC-IIIC Estrogen Receptor/Progesterone Receptor (ER/PR)
 Positive Breast Cancer



*Please refer to the specific section of the eCQM measure to identify the QDM data elements and associated value sets for use in reporting this eCQM measure.
 ‡ For a list of appropriate encounters, please refer to the Population Criteria and associated value sets as specific data elements have not been listed.

2014 eCQM Flow
Measure Identifier: CMS140v4

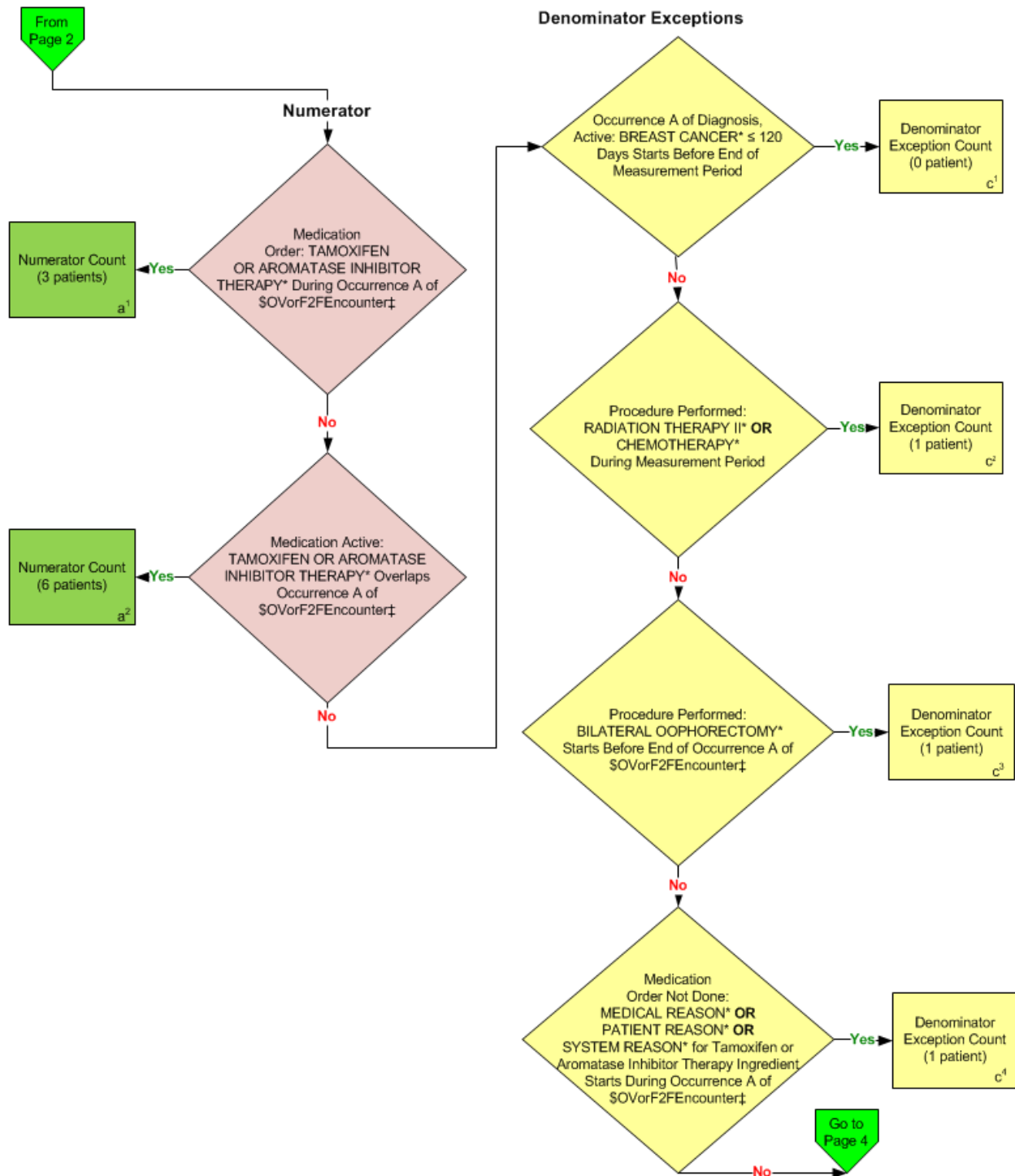
NQF 0387: Breast Cancer: Hormonal Therapy for Stage IC-IIIC Estrogen Receptor/Progestosterone Receptor (ER/PR)
 Positive Breast Cancer



*Please refer to the specific section of the eCQM measure to identify the QDM data elements and associated value sets for use in reporting this eCQM measure.

2014 eCQM Flow
Measure Identifier: CMS140v4

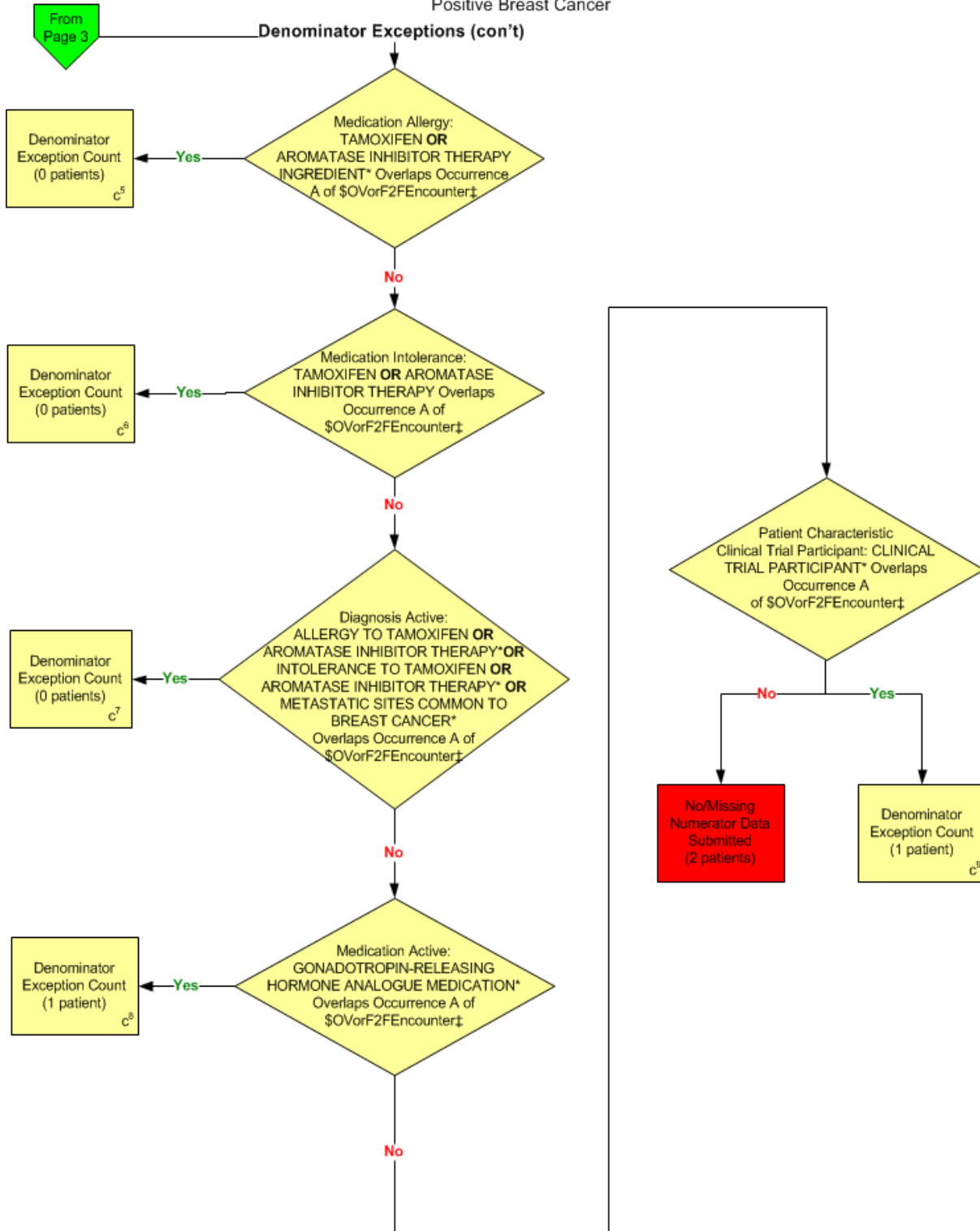
NQF 0387: Breast Cancer: Hormonal Therapy for Stage IC-IIIC Estrogen Receptor/Progesterone Receptor (ER/PR)
 Positive Breast Cancer



*Please refer to the specific section of the eCQM measure to identify the QDM data elements and associated value sets for use in reporting this eCQM measure.
 ‡ For a list of appropriate encounters, please refer to the Population Criteria and associated value sets as specific data elements have not been listed.

2014 eCQM Flow
Measure Identifier: CMS140v4

NQF 0387: Breast Cancer: Hormonal Therapy for Stage IC-IIIC Estrogen Receptor/Progestosterone Receptor (ER/PR)
 Positive Breast Cancer



*Please refer to the specific section of the eCQM measure to identify the QDM data elements and associated value sets for use in reporting this eCQM measure.
 ‡ For a list of appropriate encounters, please refer to the Population Criteria and associated value sets as specific data elements have not been listed.

2014 eCQM Flow
Measure Identifier: CMS140v4

NQF 0387: Breast Cancer: Hormonal Therapy for Stage IC-IIIC Estrogen Receptor/Progesterone Receptor (ER/PR)
Positive Breast Cancer

SAMPLE CALCULATION:

Performance Rate =

$$\frac{\text{Numerator (a=9 patients)}}{\text{Denominator (b=20 patients) - Denominator Exclusions (N/A) - Denominator Exceptions (c^1+c^2+c^3+c^4+c^5+c^6+c^7+c^8+c^9=5 patients)}} = 60.00\%$$

2014 eCQM Flows

Measure Identifier: CMS140v4

NQF 0387: Breast Cancer: Hormonal Therapy for Stage IC-IIIC Estrogen Receptor/Progesterone Receptor (ER/PR) Positive Breast Cancer

Please refer to the specific section of the eCQM to identify the Population Criteria and associated value sets for use in reporting this eCQM.

1. Start Initial Population
2. Check Patient Characteristic Sex and AGE:
 - a. If FEMALE and AGE greater than or equal to 18 years of age at measurement period equals No, do not include in Initial Population. Stop Processing.
 - b. If FEMALE, and AGE greater than or equal to 18 years of age at measurement period equals Yes, proceed to check First Occurrence A of Diagnosis Active.
3. Check First Occurrence A of Diagnosis Active:
 - a. If First Occurrence A of Diagnosis Active QDM data element, BREAST CANCER, less than or equal to 5 years starts before end of Occurrence A of \$OVorF2FEncounter: Encounter Performed QDM data element, OFFICE VISIT, or QDM data element, FACE-TO-FACE INTERACTION during measurement period equals Yes, proceed to check Encounter Performed.
 - b. If First Occurrence A of Diagnosis Active QDM data element, BREAST CANCER, less than or equal to 5 years starts before end of Occurrence A of \$OVorF2FEncounter: Encounter Performed QDM data element, OFFICE VISIT, or QDM data element, FACE-TO-FACE INTERACTION during measurement period equals No, do not include in the Initial Population. Stop Processing.
4. Check Encounter Performed: Count must be greater than or equal to 2:
 - a. If count greater than or equal to 2 of Encounter Performed QDM data element, OFFICE VISIT, or QDM data element, PATIENT PROVIDER INTERACTION, during measurement period equals Yes, include in the Initial Population and proceed to the Denominator.
 - b. If count greater than or equal to 2 of Encounter Performed QDM data element, OFFICE VISIT, or QDM data element, PATIENT PROVIDER INTERACTION, during measurement period equals No, do not include in the Initial Population. Stop Processing.
5. Start Denominator
 - a. Denominator equals the Initial Population.

6. Check Diagnosis Active:

- a. If the Diagnosis Active QDM data element, BREAST CANCER ER OR PR POSITIVE, starts before end of Occurrence A of \$OVorF2FEncounter (Encounter Performed QDM data element, OFFICE VISIT, or QDM data element, FACE-TO-FACE INTERACTION during measurement period) and starts after or concurrent with Occurrence A of Diagnosis Active QDM data element, BREAST CANCER equals Yes, proceed to check Procedure Performed.
- b. If the Diagnosis Active QDM data element, BREAST CANCER ER OR PR POSITIVE, starts before end of Occurrence A of \$OVorF2FEncounter (Encounter Performed QDM data element, OFFICE VISIT, or QDM data element, FACE-TO-FACE INTERACTION during measurement period) and starts after or concurrent with Occurrence A of Diagnosis Active QDM data element, BREAST CANCER equals No, do not include in the Denominator Eligible Population. Stop Processing.

7. Check Procedure Performed:

- a. If Procedure Performed QDM data element, CLINICAL STAGING PROCEDURE (result: Breast Distant Metastasis Status M0), starts before end of Occurrence A of \$OVorF2FEncounter (Encounter Performed QDM data element, OFFICE VISIT, or QDM data element, FACE-TO-FACE INTERACTION during measurement period) and starts after or concurrent with start of Occurrence A of Diagnosis Active, QDM data element, BREAST CANCER equals Yes, proceed to check Procedure Performed.
- b. If Procedure Performed QDM data element, CLINICAL STAGING PROCEDURE (result: Breast Distant Metastasis Status M0), starts before end of Occurrence A of \$OVorF2FEncounter (Encounter Performed QDM data element, OFFICE VISIT, or QDM data element, FACE-TO-FACE INTERACTION during measurement period) and starts after or concurrent with start of Occurrence A of Diagnosis Active, QDM data element, BREAST CANCER equals No, do not include in the Denominator Eligible Population. Stop Processing.

8. Check Procedure Performed:

- a. If Procedure Performed QDM data element, CLINICAL STAGING PROCEDURE (result: Breast Cancer Regional Lymph Node Status N3) equals Yes, include in Denominator Eligible Population. Denominator is represented by Letter b in the sample calculation listed at the end of this document. Letter b equals 20 patients in the sample calculation.
- b. If Procedure Performed QDM data element, CLINICAL STAGING PROCEDURE (result: Breast Cancer Regional Lymph Node Status N3) equals No, proceed to check next Procedure Performed.

9. Check Procedure Performed:

- a. If the Procedure Performed QDM data element, CLINICAL STAGING PROCEDURE (result: Breast Cancer Primary Tumor Size T0 or T1 or T1a or T1b or T1c or T1mi), AND Procedure Performed QDM data element, CLINICAL STAGING PROCEDURE; (result: Breast Cancer Regional Lymph Node Status N1 or pN1a or pN1b or pN1c or pN1mi or N2) equals Yes, include in Denominator Eligible Population. Denominator is represented by Letter b in the sample calculation listed at the end of this document. Letter b equals 20 patients in the sample calculation.
- b. If QDM data element, CLINICAL STAGING PROCEDURE (result: Breast Cancer Primary Tumor Size T0 or T1 or T1a or T1b or T1c or T1mi) AND (result: Breast Cancer Regional Lymph Node Status N1 or pN1a or pN1b or pN1c or pN1mi or N2), equals No, proceed to check next Procedure Performed.

10. Check Procedure Performed:

- a. If the Procedure Performed QDM data element, CLINICAL STAGING PROCEDURE (result: Breast Cancer Primary Tumor Size T2 or T3 or T4) AND (result: Breast Cancer Regional Lymph Node Status N0 or N1 or N2) equals Yes, include in Denominator Eligible Population. Denominator is represented by Letter b in the sample calculation listed at the end of this document. Letter b equals 20 patients in the sample calculation.
- b. If the Procedure Performed QDM data element, CLINICAL STAGING PROCEDURE (result: Breast Cancer Primary Tumor Size T2 or T3 or T4) AND (result: Breast Cancer Regional Lymph Node Status N0 or N1 or N2) equals No, proceed to check next Procedure Performed.

11. Check Procedure Performed:

- a. If the Procedure Performed QDM data element, CLINICAL STAGING PROCEDURE (result: Breast Cancer Primary Tumor Size T1c), AND Procedure Performed QDM data element, CLINICAL STAGING PROCEDURE (result: Breast Cancer Regional Lymph Node Status N0), equals Yes, include in Denominator Eligible Population. Denominator is represented by Letter b in the sample calculation listed at the end of this document. Letter b equals 20 patients in the sample calculation.
- b. If Procedure Performed QDM data element, CLINICAL STAGING PROCEDURE (result: Breast Cancer Primary Tumor Size T1c), AND Procedure Performed QDM data element, CLINICAL STAGING PROCEDURE (result: Breast Cancer Regional Lymph Node Status N0), equals No, do not include in Denominator Eligible Population. Stop Processing.

12. Start Numerator

13. Check Medication Order:

- a. If the Medication Order QDM data element, TAMOXIFEN OR AROMATASE INHIBITOR THERAPY, during Occurrence A of \$OVorF2FEncounter (Encounter Performed QDM data element, OFFICE VISIT, or QDM data element, FACE-TO-FACE INTERACTION during measurement period) equals Yes, include in Numerator Count. Numerator is represented by Letter a¹ in the sample calculation listed at the end of this document. Letter a¹ equals 3 patients in the sample calculation.
- b. If the Medication Order QDM data element, TAMOXIFEN OR AROMATASE INHIBITOR THERAPY, during Occurrence A of \$OVorF2FEncounter (Encounter Performed QDM data element, OFFICE VISIT, or QDM data element, FACE-TO-FACE INTERACTION during measurement period) equals No, proceed to check Medication Active.

14. Check Medication Active:

- a. If the Medication Active QDM data element, TAMOXIFEN OR AROMATASE INHIBITOR THERAPY, overlaps Occurrence A of \$OVorF2FEncounter (Encounter Performed QDM data element, OFFICE VISIT, or QDM data element, FACE-TO-FACE INTERACTION during measurement period) equals Yes, include in Numerator Count. Numerator is represented by Letter a² in the sample calculation listed at the end of this document. Letter a² equals 6 patients in the sample calculation.
- b. If the Medication Active QDM data element, TAMOXIFEN OR AROMATASE INHIBITOR THERAPY, overlaps Occurrence A of \$OVorF2FEncounter (Encounter Performed QDM data element, OFFICE VISIT, or QDM data element, FACE-TO-FACE INTERACTION during measurement period) equals No, proceed to Denominator Exceptions.

15. Start Denominator Exceptions

16. Check Occurrence A of Diagnosis Active:

- a. If Occurrence A of Diagnosis Active QDM data element, BREAST CANCER less than or equal to 120 day(s) starts before end of measurement period equals Yes, include in Denominator Exception Count. Denominator Exception, which is represented by letter c¹ in the sample calculation listed at the end of this document. Letter c¹ equals 0 patients in the sample calculation.
- b. If Occurrence A of Diagnosis Active QDM data element, BREAST CANCER less than or equal to 120 day(s) starts before end of measurement period equals No, proceed to check Procedure Performed.

17. Check Procedure Performed:

- a. If the Procedure Performed QDM data element, RADIATION THERAPY II, OR QDM data element, CHEMOTHERAPY, during measurement period equals Yes, include in Denominator Exception Count. Denominator Exception, which is represented by Letter c^2 in the sample calculation listed at the end of this document. Letter c^2 equals 1 patient in the sample calculation.
- b. If the Procedure Performed QDM data element, RADIATION THERAPY II, OR QDM data element, CHEMOTHERAPY, during measurement period equals No, proceed to check Procedure Performed.

18. Check Procedure Performed:

- a. If the Procedure Performed QDM data element, BILATERAL OOPHORECTOMY starts before end of Occurrence A of \$OVorF2FEncounter (Encounter Performed QDM data element, OFFICE VISIT, or QDM data element, FACE-TO-FACE INTERACTION during measurement period) equals Yes, include in Denominator Exception Count. Denominator Exception which is represented by Letter c^3 in the sample calculation listed at the end of this document. Letter c^3 equals 1 patient in the sample calculation.
- b. If the Procedure Performed QDM data element, BILATERAL OOPHORECTOMY starts before end of Occurrence A of \$OVorF2FEncounter (Encounter Performed QDM data element, OFFICE VISIT, or QDM data element, FACE-TO-FACE INTERACTION during measurement period) equals No, proceed to check Medication Order Not Done.

19. Check for Medication Order Not Done:

- a. If the Medication Order Not Done QDM data element, MEDICAL REASON, OR QDM data element, PATIENT REASON, OR QDM data element, SYSTEM REASON, for Tamoxifen or Aromatase Inhibitor Therapy Ingredient starts during Occurrence A of \$OVorF2FEncounter (Encounter Performed QDM data element, OFFICE VISIT, or QDM data element, FACE-TO-FACE INTERACTION during measurement period) equals Yes, include in Denominator Exception Count. Denominator Exception, which is represented by Letter c^4 in the sample calculation listed at the end of this document. Letter c^4 equals 1 patient in the sample calculation.
- b. If the Medication Order Not Done QDM data element, MEDICAL REASON, OR QDM data element, PATIENT REASON, OR QDM data element, SYSTEM REASON, for Tamoxifen or Aromatase Inhibitor Therapy Ingredient starts during Occurrence A of \$OVorF2FEncounter (Encounter Performed QDM data element, OFFICE VISIT, or QDM data element, FACE-TO-FACE INTERACTION during measurement period) equals No, proceed to check Medication Allergy.

20. Check Medication Allergy:

- a. If the Medication Allergy QDM data element, TAMOXIFEN OR AROMATASE INHIBITOR THERAPY, overlaps Occurrence A of \$OVorF2FEncounter (Encounter Performed QDM data element, OFFICE VISIT, or QDM data element, FACE-TO-FACE INTERACTION during measurement period) equals Yes include in Denominator Exception Count. Denominator Exception which is represented by Letter c⁵ in the sample calculation listed at the end of this document. Letter c⁵ equals 0 patients in the sample calculation.
- b. If the Medication Allergy QDM data element, TAMOXIFEN OR AROMATASE INHIBITOR THERAPY, overlaps Occurrence A of \$OVorF2FEncounter (Encounter Performed QDM data element, OFFICE VISIT, or QDM data element, FACE-TO-FACE INTERACTION during measurement period) equals No, proceed to check Medication Intolerance.

21. Check Medication Intolerance:

- a. If the Medication Intolerance QDM data element, TAMOXIFEN OR AROMATASE INHIBITOR THERAPY, overlaps Occurrence A \$OVorF2FEncounter (Encounter Performed QDM data element, OFFICE VISIT, or QDM data element, FACE-TO-FACE INTERACTION during measurement period) equals Yes include in Denominator Exception Count. Denominator Exception which is represented by Letter c⁶ in the sample calculation listed at the end of this document. Letter c⁶ equals 0 patients in the sample calculation.
- b. If the Medication Intolerance QDM data element, TAMOXIFEN OR AROMATASE INHIBITOR THERAPY, overlaps Occurrence A \$OVorF2FEncounter (Encounter Performed QDM data element, OFFICE VISIT, or QDM data element, FACE-TO-FACE INTERACTION during measurement period) equals No, proceed to check Diagnosis Active.

22. Check Diagnosis Active:

- a. If the Diagnosis Active QDM data element, ALLERGY TO TAMOXIFEN, OR QDM data element AROMATASE INHIBITOR THERAPY, OR QDM data element INTOLERANCE TO TAMOXIFEN, OR QDM data element AROMATASE INHIBITOR THERAPY, OR QDM data element METASTATIC SITES COMMON TO BREAST CANCER, overlaps Occurrence A \$OVorF2FEncounter (Encounter Performed QDM data element, OFFICE VISIT, or QDM data element, FACE-TO-FACE INTERACTION during measurement period) equals Yes include in Denominator Exception Count. Denominator Exception which is represented by Letter c⁷ in the sample calculation listed at the end of this document. Letter c⁷ equals 0 patients in the sample calculation.

- b. If the Diagnosis Active QDM data element, ALLERGY TO TAMOXIFEN, OR QDM data element AROMATASE INHIBITOR THERAPY, OR QDM data element INTOLERANCE TO TAMOXIFEN, OR QDM data element AROMATASE INHIBITOR THERAPY, OR QDM data element METASTATIC SITES COMMON TO BREAST CANCER, overlaps Occurrence A of \$OVorF2FEncounter (Encounter Performed QDM data element, OFFICE VISIT, or QDM data element, FACE-TO-FACE INTERACTION during measurement period) equals No, proceed to check Medication Active.

23. Check Medication Active:

- a. If the Medication Active QDM data element, GONADOTROPIN-RELEASING HORMONE ANALOGUE MEDICATION, overlaps Occurrence A of \$OVorF2FEncounter (Encounter Performed QDM data element, OFFICE VISIT, or QDM data element, FACE-TO-FACE INTERACTION during measurement period), equals Yes, include in Denominator Exception Count. Denominator Exception which is represented by Letter c⁸ in the sample calculation listed at the end of this document. Letter c⁸ equals 1 patient in the sample calculation.
- b. b. If the Medication Active QDM data element, GONADOTROPIN-RELEASING HORMONE ANALOGUE MEDICATION, overlaps Occurrence A of \$OVorF2FEncounter (Encounter Performed QDM data element, OFFICE VISIT, or QDM data element, FACE-TO-FACE INTERACTION during measurement period), equals No, proceed to check Patient Characteristic Clinical Trial Participant.

24. Check Patient Characteristic Clinical Trial Participant:

- a. If Patient Characteristic Clinical Trial Participant QDM data element, CLINICAL TRIAL PARTICIPANT, overlaps Occurrence A of \$OVorF2FEncounter (Encounter Performed QDM data element, OFFICE VISIT, or QDM data element, FACE-TO-FACE INTERACTION during measurement period) equals Yes include in Denominator Exception Count. Denominator Exception which is represented by Letter c⁹ in the sample calculation listed at the end of this document. Letter c⁹ equals 1 patient in the sample calculation.
- b. If Patient Characteristic Clinical Trial Participant QDM data element, CLINICAL TRIAL PARTICIPANT, overlaps Occurrence A of \$OVorF2FEncounter (Encounter Performed QDM data element, OFFICE VISIT, or QDM data element, FACE-TO-FACE INTERACTION during measurement period) equals No, include in the No/Missing Data Submitted Count. Stop processing.

SAMPLE CALCULATION:

Performance Rate =

$$\frac{\text{Numerator (a=9 patients)}}{\text{Denominator (b=20 patients) - Denominator Exclusions (N/A) - Denominator Exceptions (c^1+c^2+c^3+c^4+c^5+c^6+c^7+c^8+c^9=5 patients)}} = 60.00\%$$