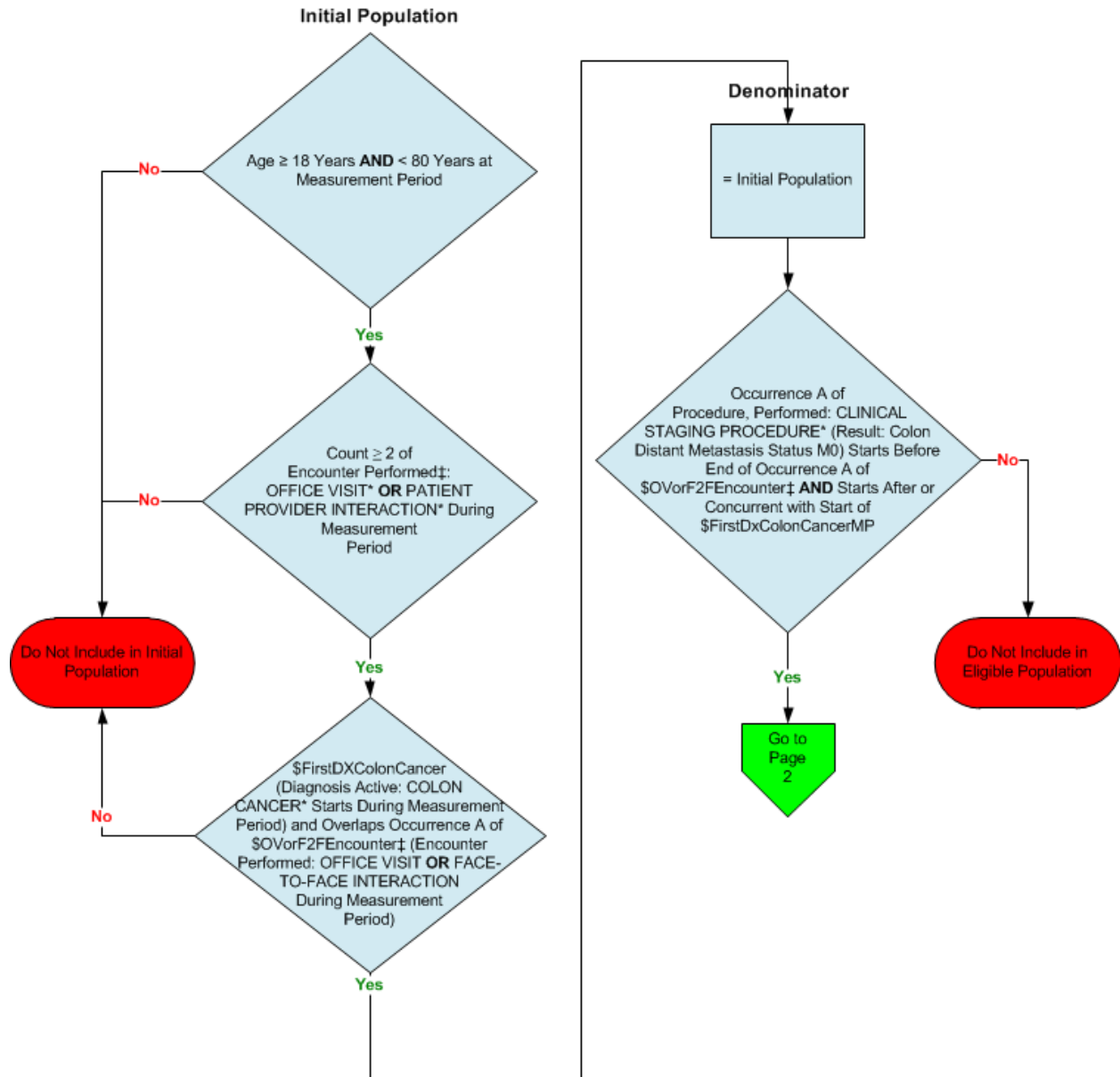


**2014 eCQM Flow**  
**Measure Identifier: CMS141v5**

NQF 0385: Colon Cancer: Chemotherapy for AJCC Stage III Colon Cancer Patients

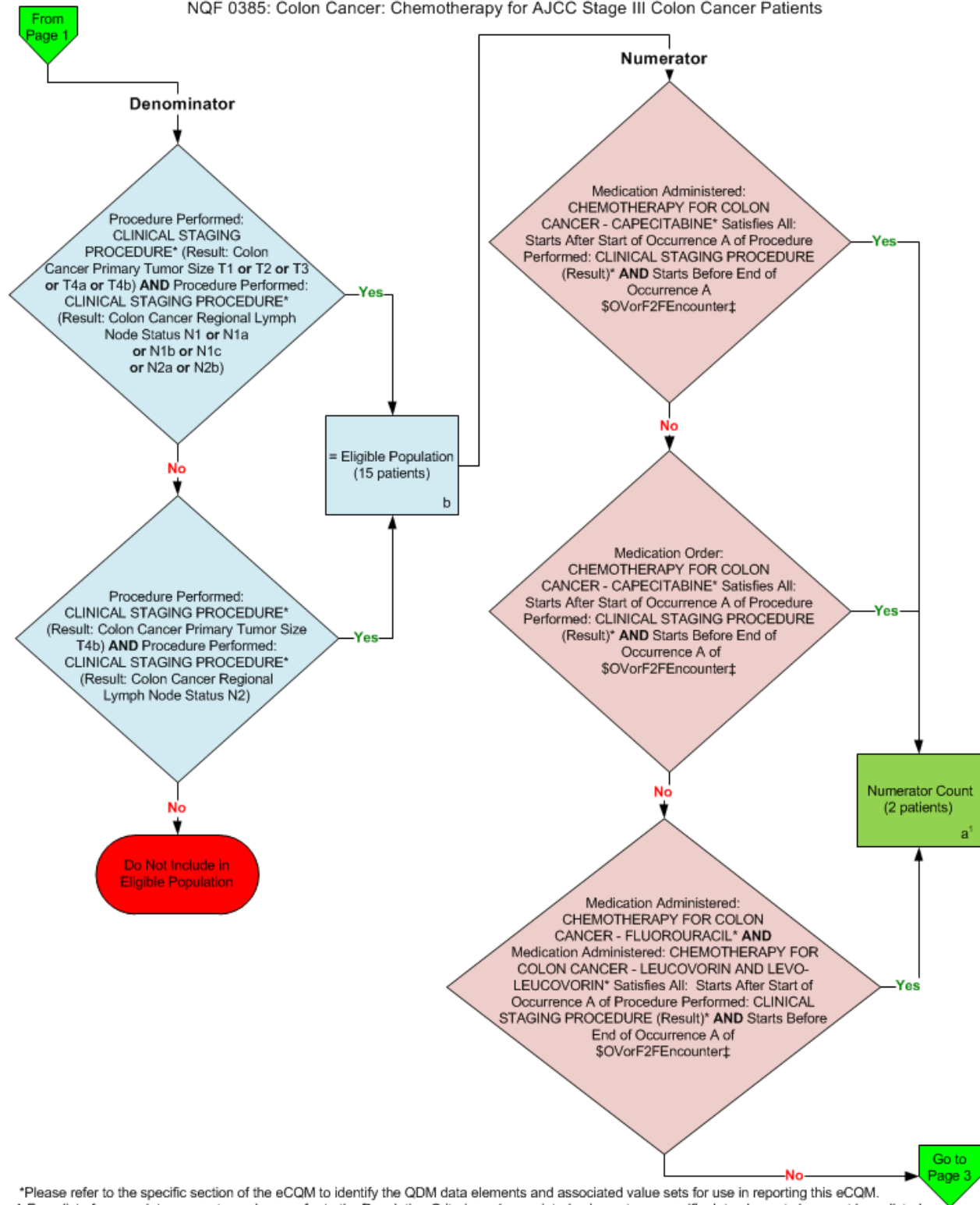


\*Please refer to the specific section of the eCQM to identify the QDM data elements and associated value sets for use in reporting this eCQM.

‡ For a list of appropriate encounters, please refer to the Population Criteria and associated value sets as specific data elements have not been listed.

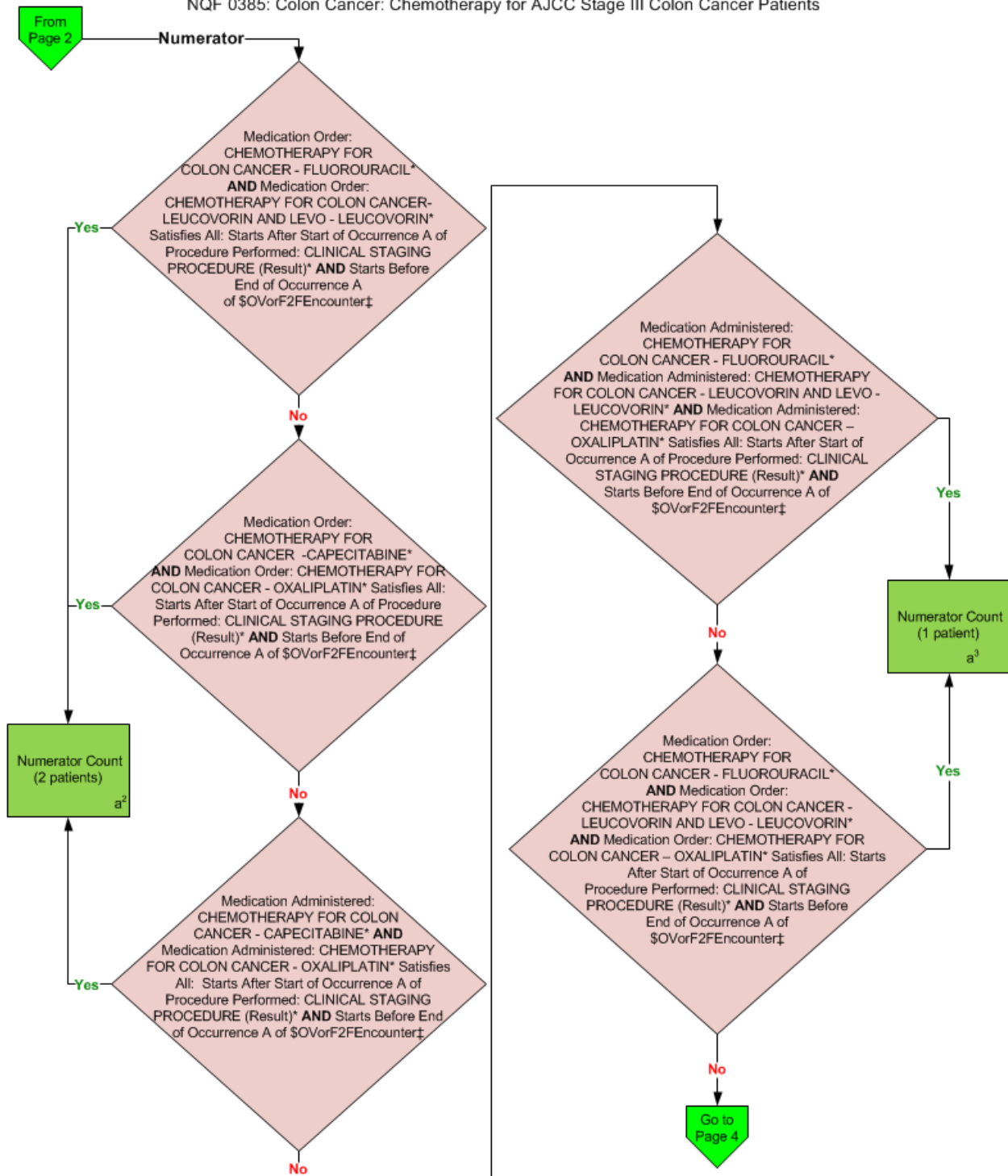
**2014 eCQM Flow**  
**Measure Identifier: CMS141v5**

NQF 0385: Colon Cancer: Chemotherapy for AJCC Stage III Colon Cancer Patients



**2014 eCQM Flow**  
**Measure Identifier: CMS141v5**

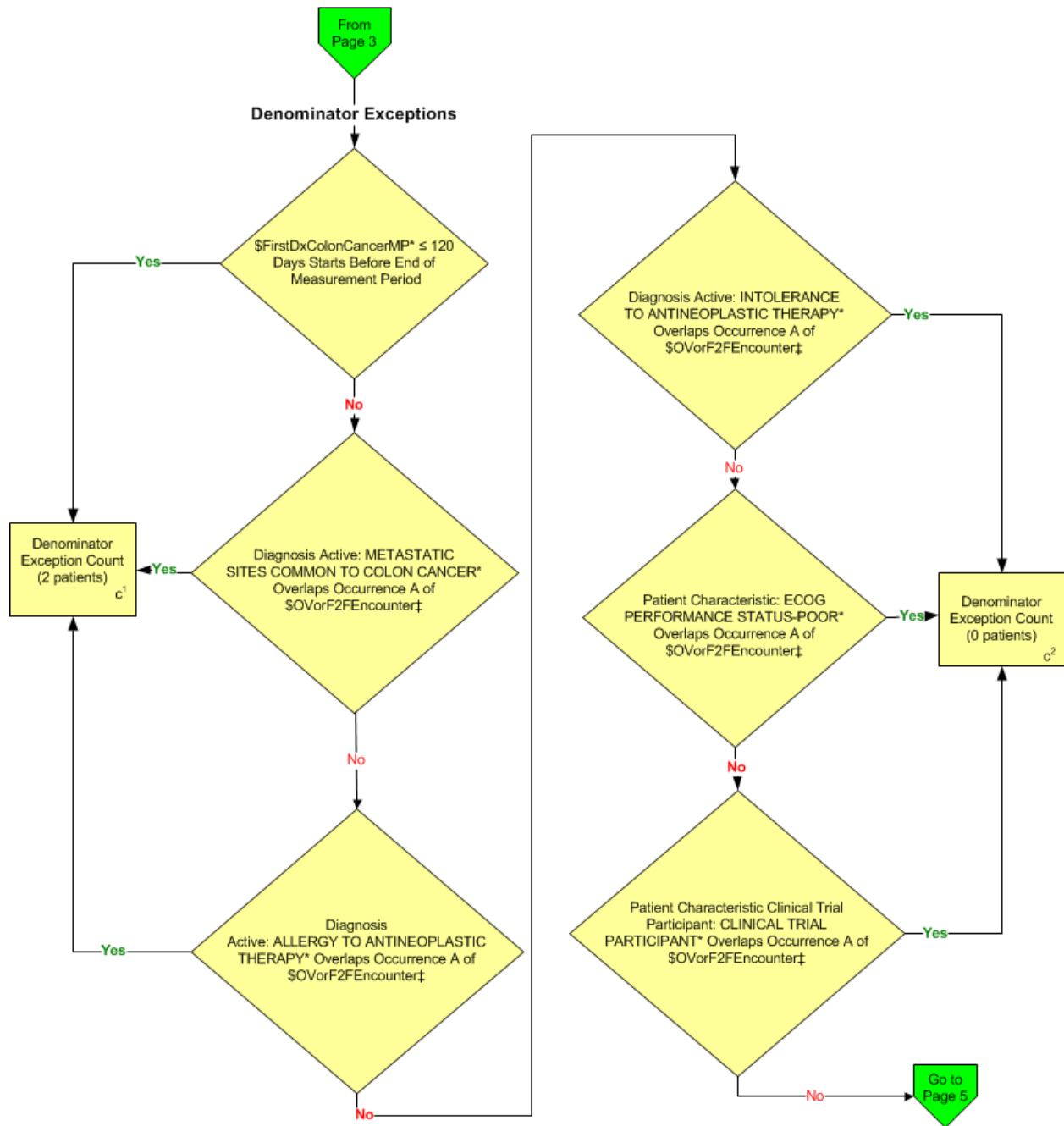
NQF 0385: Colon Cancer: Chemotherapy for AJCC Stage III Colon Cancer Patients



\*Please refer to the specific section of the eCQM to identify the QDM data elements and associated value sets for use in reporting this eCQM.

‡ For a list of appropriate encounters, please refer to the Population Criteria and associated value sets as specific data elements have not been listed.

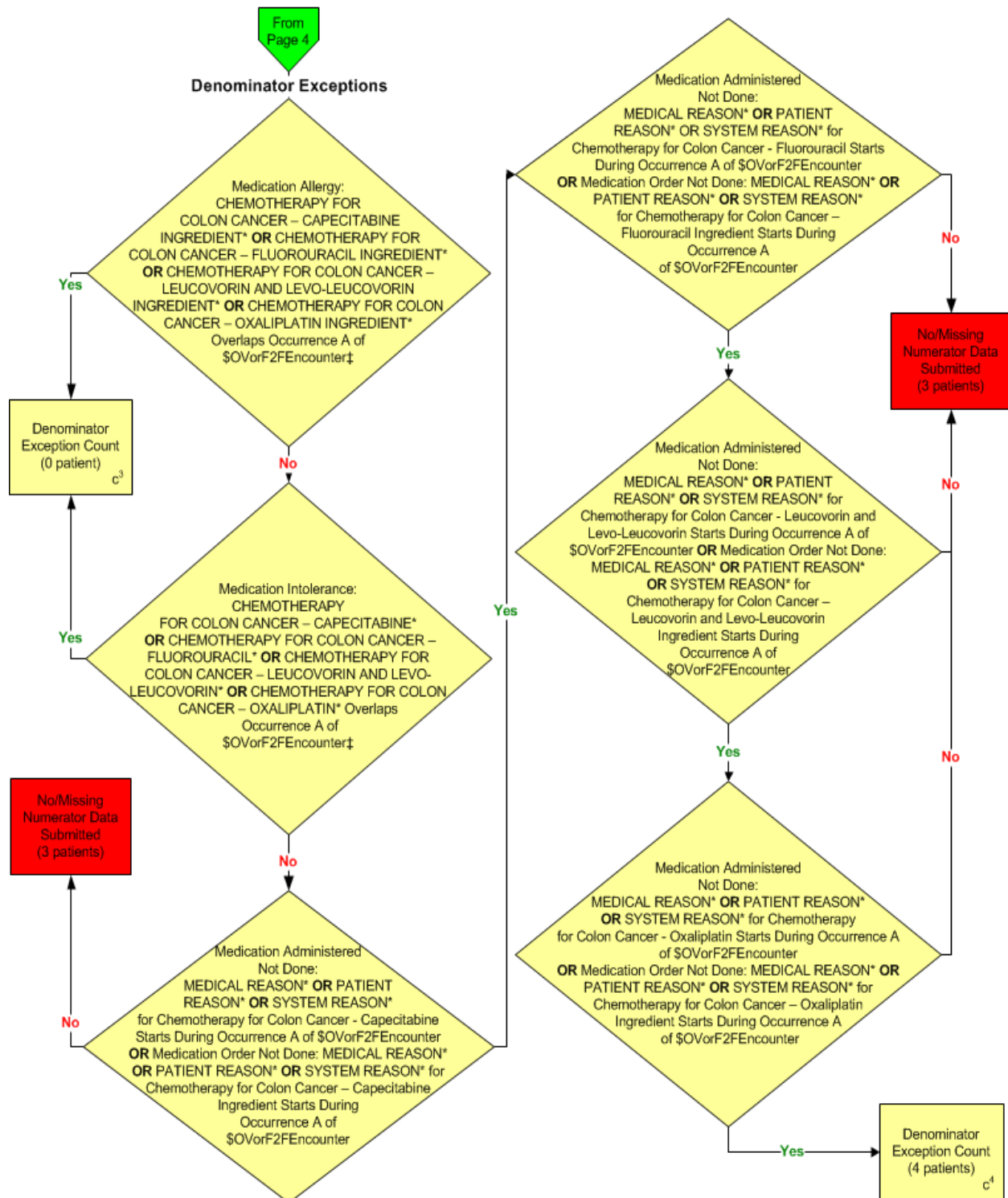
**2014 eCQM Flow**  
**Measure Identifier: CMS141v5**  
 NQF 0385: Colon Cancer: Chemotherapy for AJCC Stage III Colon Cancer Patients



\*Please refer to the specific sections of the eCQM to identify the QDM data elements and associated value sets for use in reporting this eCQM.  
 ‡ For a list of appropriate encounters, please refer to the Population Criteria and associated value sets as specific data elements have not been listed.

**2014 eCQM Flow**  
**Measure Identifier: CMS141v5**

NQF 0385: Colon Cancer: Chemotherapy for AJCC Stage III Colon Cancer Patients



\*Please refer to the specific section of the eCQM to identify the QDM data elements and associated value sets for use in reporting this eCQM.

‡ For a list of appropriate encounters, please refer to the Population Criteria and associated value sets as specific data elements have not been listed.

**2014 eCQM Flow**  
**Measure Identifier: CMS141v5**  
NQF 0385: Colon Cancer: Chemotherapy for AJCC Stage III Colon Cancer Patients

**SAMPLE CALCULATION:**

**Performance Rate =**

$$\frac{\text{Numerator (a}^1 + a^2 + a^3 = 5 \text{ patients)}}{\text{Denominator (b=15 patients) - Denominator Exclusions (N/A) - Denominator Exceptions (c}^1 + c^2 + c^3 + c^4 = 6 \text{ patients)}} = 55.56\%$$

## 2014 eCQM Flows

Measure Identifier: CMS141v5

NQF 0385: Colon Cancer: Chemotherapy for AJCC Stage III Colon Cancer Patients

Please refer to the specific section of the eCQM to identify the Population Criteria and associated value sets for use in reporting this eCQM.

1. Start Initial Population
2. Check Age:
  - a. If the AGE greater than or equal to 18 years and less than 80 years at measurement period equals No, do not include in Initial Population. Stop Processing.
  - b. If the AGE greater than or equal to 18 years and less than 80 years at measurement period equals Yes, proceed to check Encounters Performed.
3. Check Encounter Performed: Total number greater than or equal to 2 counts
  - a. If the Encounter Performed is greater than or equal to 2 counts of QDM data element, OFFICE VISIT or PATIENT PROVIDER INTERACTION, during measurement period equals Yes, proceed to check \$FirstDxColonCancer.
  - b. If the Encounter Performed is greater than or equal to 2 counts of QDM data element, OFFICE VISIT or PATIENT PROVIDER INTERACTION, during measurement period equals No, do not include in the Initial Population. Stop Processing.
4. Check \$FirstDxColonCancer:
  - a. If \$FirstDxColonCancer Diagnosis Active QDM data element, COLON CANCER, starts during measurement period and overlaps Occurrence A of \$OVorF2FEncounter (Encounter Performed QDM data element OFFICE VISIT or QDM data element PATIENT PROVIDER INTERACTION during measurement period) equals Yes, proceed to check Diagnosis Active.
  - b. If \$FirstDxColonCancer Diagnosis Active QDM data element, COLON CANCER, starts during measurement period and overlaps Occurrence A of \$OVorF2FEncounter (Encounter Performed QDM data element OFFICE VISIT or QDM data element PATIENT PROVIDER INTERACTION during measurement period) equals No, do not include in the Initial Population. Stop Processing.
5. Start Denominator
  - a. Denominator equals the Initial Population. Proceed to Occurrence A of Procedure Performed.
6. Check Occurrence A of Procedure Performed:
  - a. If Occurrence A of Procedure Performed QDM data element, CLINICAL STAGING PROCEDURE, (result: Colon Distant Metastasis Status M0) starts before end of Occurrence A of \$OVorF2FEncounter (Encounter Performed QDM data element OFFICE VISIT or QDM data element FACE-TO-FACE INTERACTION during measurement period), AND starts after or concurrent with start of

- \$FirstDxColonCancer (First Diagnosis Active of QDM data element, COLON CANCER, starts during measurement period) equals Yes, proceed to check Procedure Performed.
- b. If Occurrence A of Procedure Performed QDM data element, CLINICAL STAGING PROCEDURE, (result: Colon Distant Metastasis Status M0) starts before end of Occurrence A of \$OVorF2FEncounter (Encounter Performed QDM data element OFFICE VISIT or QDM data element FACE-TO-FACE INTERACTION during measurement period), AND starts after or concurrent with start of \$FirstDxColonCancer (First Diagnosis Active of QDM data element, COLON CANCER, starts during measurement period) equals No, do not include in the Denominator Eligible Population. Stop Processing.
7. Check Procedure Performed:
- a. If the Procedure Performed QDM data element CLINICAL STAGING PROCEDURE (result: Colon Cancer Primary Tumor Size T1 or T2 or T3 or T4a or T4b) and Procedure Performed QDM Data Element, CLINICAL STAGING PROCEDURE (result: Colon Cancer Regional Lymph Node Status N1 or N1a or N1b or N1c or N2a or N2b) equals Yes, include in Denominator Eligible Population. Denominator is represented by Letter b in the sample calculation listed at the end of this document. Letter b equals 15 patients in the sample calculation.
  - b. If the Procedure Performed QDM data element CLINICAL STAGING PROCEDURE (result: Colon Cancer Primary Tumor Size T1 or T2 or T3 or T4a or T4b) and Procedure Performed QDM Data Element, CLINICAL STAGING PROCEDURE (result: Colon Cancer Regional Lymph Node Status N1 or N1a or N1b or N1c or N2a or N2b) equals No, proceed to Procedure Performed.
8. Check Procedure Performed:
- a. If the Procedure Performed QDM data element, CLINICAL STAGING PROCEDURE (result: Colon Cancer Primary Tumor Size T4b) and Procedure Performed QDM Data Element, CLINICAL STAGING PROCEDURE (result: Colon Cancer Regional Lymph Node Status N2) equals Yes, include in Denominator Eligible Population. Denominator is represented by Letter b in the sample calculation listed at the end of this document. Letter b equals 15 patients in the sample calculation.
  - b. If the Procedure Performed QDM data element, CLINICAL STAGING PROCEDURE (result: Colon Cancer Primary Tumor Size T4b) and Procedure Performed QDM Data Element, CLINICAL STAGING PROCEDURE (result: Colon Cancer Regional Lymph Node Status N2) equals No, do not include in the Denominator Eligible Population. Stop Processing.
9. Start Numerator
10. Check Medication Administered:
- a. If the Medication Administered QDM data element, CHEMOTHERAPY FOR COLON CANCER – CAPECITABINE, satisfies all and starts after start of Occurrence A of Procedure Performed QDM data element, CLINICAL STAGING PROCEDURE (Result), and starts before end of Occurrence A of \$OVorF2FEncounter (Encounter Performed QDM data element OFFICE VISIT or QDM data element FACE-TO-FACE



INTERACTION during measurement period) equals Yes, include in Numerator Count. Numerator is represented by Letter a<sup>1</sup> in the sample calculation listed at the end of this document. Letter a<sup>1</sup> equals 2 patients in the sample calculation.

- b. If the Medication Administered QDM data element, CHEMOTHERAPY FOR COLON CANCER – CAPECITABINE, satisfies all and starts after start of Occurrence A of Procedure Performed QDM data element, CLINICAL STAGING PROCEDURE (Result), and starts before end of Occurrence A of \$OVorF2FEncounter (Encounter Performed QDM data element OFFICE VISIT or QDM data element FACE-TO-FACE INTERACTION during measurement period) equals No, proceed to check Medication Order.

11. Check Medication Order:

- a. If the Medication Order QDM data element, CHEMOTHERAPY FOR COLON CANCER – CAPECITABINE, satisfies all and starts after start of Occurrence A of Procedure Performed QDM data element, CLINICAL STAGING PROCEDURE (Result), and starts before end of Occurrence A of \$OVorF2FEncounter (Encounter Performed QDM data element OFFICE VISIT or QDM data element FACE-TO-FACE INTERACTION during measurement period) equals Yes, include in Numerator Count. Numerator is represented by Letter a<sup>1</sup> in the sample calculation listed at the end of this document. Letter a<sup>1</sup> equals 2 patients in the sample calculation.
- b. If the Medication Order QDM data element, CHEMOTHERAPY FOR COLON CANCER – CAPECITABINE, satisfies all and starts after start of Occurrence A of Procedure Performed QDM data element, CLINICAL STAGING PROCEDURE (Result), and starts before end of Occurrence A of \$OVorF2FEncounter (Encounter Performed QDM data element OFFICE VISIT or QDM data element FACE-TO-FACE INTERACTION during measurement period) equals No, go to check Medication Administered.

12. Check Medication Administered:

- a. If the Medication Administered QDM data element, CHEMOTHERAPY FOR COLON CANCER-FLUOROURACIL, and QDM data element, CHEMOTHERAPY FOR COLON CANCER-LEUCOVORIN AND LEVO-LEUCOVORIN satisfies all and starts after start of Occurrence A of Procedure Performed QDM data element, CLINICAL STAGING PROCEDURE (Result), and starts before end of Occurrence A of \$OVorF2FEncounter (Encounter Performed QDM data element OFFICE VISIT or QDM data element FACE-TO-FACE INTERACTION during measurement period) equals Yes, include in Numerator Count. Numerator is represented by Letter a<sup>1</sup> in the sample calculation listed at the end of this document. Letter a<sup>1</sup> equals 2 patients in the sample calculation.
- b. If the Medication Administered QDM data element, CHEMOTHERAPY FOR COLON CANCER-FLUOROURACIL, and QDM data element, CHEMOTHERAPY FOR COLON CANCER-LEUCOVORIN AND LEVO-LEUCOVORIN satisfies all and starts after start of Occurrence A of Procedure Performed QDM data element, CLINICAL STAGING PROCEDURE (Result), and starts before end of Occurrence A of \$OVorF2FEncounter (Encounter Performed QDM data element OFFICE VISIT or QDM data element FACE-TO-FACE INTERACTION during measurement period) equals No, proceed to check Medication Order.

13. Check Medication Order:

- a. If the Medication Order QDM data element, CHEMOTHERAPY FOR COLON CANCER-FLUOROURACIL, and QDM data element, CHEMOTHERAPY FOR COLON CANCER-LEUCOVORIN AND LEVO-LEUCOVORIN satisfies all and starts after start of Occurrence A of Procedure Performed QDM data element, CLINICAL STAGING PROCEDURE (Result), AND starts before end of Occurrence A of \$OVorF2FEncounter (Encounter Performed QDM data element OFFICE VISIT or QDM data element FACE-TO-FACE INTERACTION during measurement period) equals Yes, include in Numerator Count. Numerator is represented by Letter a<sup>2</sup> in the sample calculation listed at the end of this document. Letter a<sup>2</sup> equals 2 patients in the sample calculation.
- b. If the Medication Order QDM data element, CHEMOTHERAPY FOR COLON CANCER-FLUOROURACIL, and QDM data element, CHEMOTHERAPY FOR COLON CANCER-LEUCOVORIN AND LEVO-LEUCOVORIN satisfies all and starts after start of Occurrence A of Procedure Performed QDM data element, CLINICAL STAGING PROCEDURE (Result), AND starts before end of Occurrence A of \$OVorF2FEncounter (Encounter Performed QDM data element OFFICE VISIT or QDM data element FACE-TO-FACE INTERACTION during measurement period) equals No, proceed to check Medication Order.

14. Check Medication Order:

- a. If the Medication Order Occurrence A of QDM data element, CHEMOTHERAPY FOR COLON CANCER-CAPECITABINE, and Medication Order QDM data element, CHEMOTHERAPY FOR COLON CANCER-OXALIPLATIN satisfies all and starts after start of Occurrence A of Procedure Performed QDM data element, CLINICAL STAGING PROCEDURE (Result), and starts before end of Occurrence A of \$OVorF2FEncounter (Encounter Performed QDM data element OFFICE VISIT or QDM data element FACE-TO-FACE INTERACTION during measurement period) equals Yes, include in Numerator Count. Numerator is represented by Letter a<sup>2</sup> in the sample calculation listed at the end of this document. Letter a<sup>2</sup> equals 2 patients in the sample calculation.
- b. If the Medication Order Occurrence A of QDM data element, CHEMOTHERAPY FOR COLON CANCER-CAPECITABINE, and Medication Order QDM data element, CHEMOTHERAPY FOR COLON CANCER-OXALIPLATIN satisfies all and starts after start of Occurrence A of Procedure Performed QDM data element, CLINICAL STAGING PROCEDURE (Result), and starts before end of Occurrence A of \$OVorF2FEncounter (Encounter Performed QDM data element OFFICE VISIT or QDM data element FACE-TO-FACE INTERACTION during measurement period) equals No, proceed to check Medication Administered.

15. Check Medication Administered:

- a. If the Medication Administered QDM data element, CHEMOTHERAPY FOR COLON CANCER-CAPECITABINE, and Medication Administered QDM data element, CHEMOTHERAPY FOR COLON CANCER-OXALIPLATIN satisfies all and starts after start of Occurrence A of Procedure Performed QDM data element, CLINICAL STAGING PROCEDURE (Result), and starts before end of Occurrence A of

- \$OVorF2FEncounter (Encounter Performed QDM data element OFFICE VISIT or QDM data element FACE-TO-FACE INTERACTION during measurement period) equals Yes, include in Numerator Count. Numerator is represented by Letter a<sup>2</sup> in the sample calculation listed at the end of this document. Letter a<sup>2</sup> equals 2 patients in the sample calculation.
- b. If the Medication Administered QDM data element, CHEMOTHERAPY FOR COLON CANCER-CAPECITABINE, and Medication Administered QDM data element, CHEMOTHERAPY FOR COLON CANCER-OXALIPLATIN satisfies all and starts after start of Occurrence A of Procedure Performed QDM data element, CLINICAL STAGING PROCEDURE (Result), and starts before end of Occurrence A of \$OVorF2FEncounter (Encounter Performed QDM data element OFFICE VISIT or QDM data element FACE-TO-FACE INTERACTION during measurement period) equals No, go to check Medication Administered.
16. Check Medication Administered:
- a. If the Medication Administered QDM data element, CHEMOTHERAPY FOR COLON CANCER-FLUOROURACIL, and Medication Administered QDM data element, CHEMOTHERAPY FOR COLON CANCER-LEUCOVORIN AND LEVO-LEUCOVORIN, and Medication Administered QDM data element, CHEMOTHERAPY FOR COLON CANCER-OXALIPLATIN, satisfies all and starts after start of Occurrence A of Procedure Performed QDM data element, CLINICAL STAGING PROCEDURE (Result), and starts before end of Occurrence A of \$OVorF2FEncounter (Encounter Performed QDM data element OFFICE VISIT or QDM data element FACE-TO-FACE INTERACTION during measurement period) equals Yes, include in Numerator Count. Numerator is represented by Letter a<sup>3</sup> in the sample calculation listed at the end of this document. Letter a<sup>3</sup> equals 1 patient in the sample calculation.
  - b. If the Medication Administered QDM data element, CHEMOTHERAPY FOR COLON CANCER-FLUOROURACIL, and Medication Administered QDM data element, CHEMOTHERAPY FOR COLON CANCER-LEUCOVORIN AND LEVO-LEUCOVORIN, and Medication Administered QDM data element, CHEMOTHERAPY FOR COLON CANCER-OXALIPLATIN, satisfies all and starts after start of Occurrence A of Procedure Performed QDM data element, CLINICAL STAGING PROCEDURE (Result), and starts before end of Occurrence A of \$OVorF2FEncounter (Encounter Performed QDM data element OFFICE VISIT or QDM data element FACE-TO-FACE INTERACTION during measurement period) equals No, proceed to check Medication Order.
17. Check Medication Order:
- a. If Medication Order QDM data element, CHEMOTHERAPY FOR COLON CANCER-FLUOROURACIL, and Medication Order QDM data element, CHEMOTHERAPY FOR COLON CANCER-LEUCOVORIN AND LEVO-LEUCOVORIN, and Medication Order QDM data element, CHEMOTHERAPY FOR COLON CANCER-OXALIPLATIN, satisfies all and starts after start of Occurrence A of Procedure Performed QDM data element, CLINICAL STAGING PROCEDURE (Result), and starts before end of Occurrence A of \$OVorF2FEncounter (Encounter Performed QDM data element OFFICE VISIT or QDM data element FACE-TO-FACE

- INTERACTION during measurement period) equals Yes, include in Numerator Count. Numerator is represented by Letter a<sup>3</sup> in the sample calculation listed at the end of this document. Letter a<sup>3</sup> equals 1 patient in the sample calculation.
- b. If Medication Order QDM data element, CHEMOTHERAPY FOR COLON CANCER-FLUOROURACIL, and Medication Order QDM data element, CHEMOTHERAPY FOR COLON CANCER-LEUCOVORIN AND LEVO-LEUCOVORIN, and Medication Order QDM data element, CHEMOTHERAPY FOR COLON CANCER-OXALIPLATIN, satisfies all and starts after start of Occurrence A of Procedure Performed QDM data element, CLINICAL STAGING PROCEDURE (Result), and starts before end of Occurrence A of \$OVorF2FEncounter (Encounter Performed QDM data element OFFICE VISIT or QDM data element FACE-TO-FACE INTERACTION during measurement period) equals Yes No, proceed to Denominator Exceptions.
18. Start Denominator Exceptions
19. Check \$FirstDxColonCancerMP, Diagnosis Active:
- a. If the \$FirstDxColonCancerMP (Diagnosis Active QDM data element, COLON CANCER, starts during measurement period) less than or equal to 120 days starts before end of measurement period equals Yes, include in Denominator Exception count. Denominator Exception is represented by Letter c<sup>1</sup> in the sample calculation listed at the end of this document. Letter c<sup>1</sup> equals 2 patients in the sample calculation.
  - b. If the \$FirstDxColonCancerMP (Diagnosis Active QDM data element, COLON CANCER, starts during measurement period) less than or equal to 120 days starts before end of measurement period equals No, proceed to check Diagnosis Active.
20. Check Diagnosis Active:
- a. If the Diagnosis Active QDM data element, METASTATIC SITES COMMON TO COLON CANCER, overlaps Occurrence A of \$OVorF2FEncounter (Encounter Performed QDM data element OFFICE VISIT or QDM data element FACE-TO-FACE INTERACTION during measurement period) equals Yes include in Denominator Exception count. Denominator Exception is represented by Letter c<sup>1</sup> in the sample calculation listed at the end of this document. Letter c<sup>1</sup> equals 2 patients in the sample calculation.
  - b. If the Diagnosis Active QDM data element, METASTATIC SITES COMMON TO COLON CANCER, overlaps Occurrence A of \$OVorF2FEncounter (Encounter Performed QDM data element OFFICE VISIT or QDM data element FACE-TO-FACE INTERACTION during measurement period) equals No, proceed to check Diagnosis Active.
21. Check Diagnosis Active:
- a. If the Diagnosis Active QDM data element, ALLERGY TO ANTINEOPLASTIC THERAPY, overlaps Occurrence A of \$OVorF2FEncounter (Encounter Performed QDM data element OFFICE VISIT or QDM data element FACE-TO-FACE INTERACTION during measurement period) equals Yes include in Denominator Exception count. Denominator Exception is represented by Letter c<sup>1</sup> in the sample

calculation listed at the end of this document. Letter c<sup>1</sup> equals 2 patients in the sample calculation.

- b. If the Diagnosis Active QDM data element, ALLERGY TO ANTINEOPLASTIC THERAPY, overlaps Occurrence A of \$OVorF2FEncounter (Encounter Performed QDM data element OFFICE VISIT or QDM data element FACE-TO-FACE INTERACTION during measurement period) equals No, proceed to check Diagnosis Active.

22. Check Diagnosis Active:

- a. If the Diagnosis Active QDM data element, INTOLERANCE TO ANTINEOPLASTIC THERAPY, overlaps Occurrence A of \$OVorF2FEncounter (Encounter Performed QDM data element OFFICE VISIT or QDM data element FACE-TO-FACE INTERACTION during measurement period) equals Yes include in Denominator Exception count. Denominator Exception is represented by Letter c<sup>2</sup> in the sample calculation listed at the end of this document. Letter c<sup>2</sup> equals 0 patients in the sample calculation.
- b. If the Diagnosis Active QDM data element, INTOLERANCE TO ANTINEOPLASTIC THERAPY, overlaps Occurrence A of \$OVorF2FEncounter (Encounter Performed QDM data element OFFICE VISIT or QDM data element FACE-TO-FACE INTERACTION during measurement period) equals No, proceed to check Patient Characteristic.

23. Check Patient Characteristic:

- a. If the Patient Characteristic: ECOG PERFORMANCE STATUS-POOR, overlaps Occurrence A of \$OVorF2FEncounter (Encounter Performed QDM data element OFFICE VISIT or QDM data element FACE-TO-FACE INTERACTION during measurement period) equals Yes include in Denominator Exception count. Denominator Exception is represented by Letter c<sup>2</sup> in the sample calculation listed at the end of this document. Letter c<sup>2</sup> equals 0 patients in the sample calculation.
- b. If the Patient Characteristic: ECOG PERFORMANCE STATUS-POOR, overlaps Occurrence A of \$OVorF2FEncounter (Encounter Performed QDM data element OFFICE VISIT or QDM data element FACE-TO-FACE INTERACTION during measurement period) equals No, proceed to check Patient Characteristic Clinical Trial Participant.

24. Check Patient Characteristic Clinical Trial Participant:

- a. If Patient Characteristic Clinical Trial Participant QDM data element, CLINICAL TRIAL PARTICIPANT, overlaps Occurrence A of \$OVorF2FEncounter (Encounter Performed QDM data element OFFICE VISIT or QDM data element FACE-TO-FACE INTERACTION during measurement period) equals Yes include in Denominator Exception count. Denominator Exception is represented by Letter c<sup>2</sup> in the sample calculation listed at the end of this document. Letter c<sup>2</sup> equals 0 patients in the sample calculation.
- b. If Patient Characteristic Clinical Trial Participant QDM data element, CLINICAL TRIAL PARTICIPANT, overlaps Occurrence A of \$OVorF2FEncounter (Encounter Performed QDM data element OFFICE VISIT or QDM data element FACE-TO-FACE

INTERACTION during measurement period) equals No, proceed to check Medication Allergy.

25. Check Medication Allergy:

- a. If the Medication Allergy QDM data element, CHEMOTHERAPY FOR COLON CANCER-CAPECITABINE INGREDIENT, or QDM data element, CHEMOTHERAPY FOR COLON CANCER – FLUOROURACIL INGREDIENT, or QDM data element, CHEMOTHERAPY FOR COLON CANCER – LEUCOVORIN AND LEVO-LEUCOVORIN INGREDIENT or QDM data element, CHEMOTHERAPY FOR COLON CANCER – OXALIPLATIN INGREDIENT overlaps Occurrence A of \$OVorF2FEncounter (Encounter Performed QDM data element OFFICE VISIT or QDM data element FACE-TO-FACE INTERACTION during measurement period) equals Yes, include in Denominator Exception count. Denominator Exception is represented by Letter c<sup>3</sup> in the sample calculation listed at the end of this document. Letter c<sup>3</sup> equals 0 patients in the sample calculation.
- b. b. If the Medication Allergy QDM data element, CHEMOTHERAPY FOR COLON CANCER-CAPECITABINE INGREDIENT, or QDM data element, CHEMOTHERAPY FOR COLON CANCER – FLUOROURACIL INGREDIENT, or QDM data element, CHEMOTHERAPY FOR COLON CANCER – LEUCOVORIN AND LEVO-LEUCOVORIN INGREDIENT or QDM data element, CHEMOTHERAPY FOR COLON CANCER – OXALIPLATIN INGREDIENT overlaps Occurrence A of \$OVorF2FEncounter (Encounter Performed QDM data element OFFICE VISIT or QDM data element FACE-TO-FACE INTERACTION during measurement period) equals Yes, include in Denominator Exception count. Denominator Exception is represented by Letter c<sup>3</sup> in the sample calculation listed at the end of this document. Letter c<sup>3</sup> equals No, proceed to check Medication Intolerance.

26. Check Medication Intolerance:

- a. If the Medication Intolerance QDM data element, CHEMOTHERAPY FOR COLON CANCER-CAPECITABINE, or QDM data element, CHEMOTHERAPY FOR COLON CANCER – FLUOROURACIL, or QDM data element, CHEMOTHERAPY FOR COLON CANCER – LEUCOVORIN AND LEVO-LEUCOVORIN or QDM data element, CHEMOTHERAPY FOR COLON CANCER – OXALIPLATIN overlaps Occurrence A of \$OVorF2FEncounter (Encounter Performed QDM data element OFFICE VISIT or QDM data element FACE-TO-FACE INTERACTION during measurement period) equals Yes, include in Denominator Exception count. Denominator Exception is represented by Letter c<sup>3</sup> in the sample calculation listed at the end of this document. Letter c<sup>3</sup> equals 0 patients in the sample calculation.
- b. If the Medication Intolerance QDM data element, CHEMOTHERAPY FOR COLON CANCER-CAPECITABINE, or QDM data element, CHEMOTHERAPY FOR COLON CANCER – FLUOROURACIL, or QDM data element, CHEMOTHERAPY FOR COLON CANCER – LEUCOVORIN AND LEVO-LEUCOVORIN or QDM data element, CHEMOTHERAPY FOR COLON CANCER – OXALIPLATIN overlaps Occurrence A of \$OVorF2FEncounter (Encounter Performed QDM data element OFFICE VISIT or QDM data element FACE-TO-FACE INTERACTION during measurement period) equals No, proceed to check Medication Administered Not Done.

27. Check Medication Administered Not Done:

- a. If Medication Administered Not Done QDM data element, MEDICAL REASON, or PATIENT REASON, or SYSTEM REASON, for Chemotherapy for Colon Cancer-Capectibine starts during Occurrence A of \$OVorF2FEncounter (Encounter Performed QDM data element OFFICE VISIT or QDM data element FACE-TO-FACE INTERACTION during measurement period), or Medication Order Not Done QDM data element, MEDICAL REASON, or PATIENT REASON, or SYSTEM REASON, for Chemotherapy for Colon Cancer-Capectibine Ingredient starts during Occurrence A of \$OVorF2FEncounter (Encounter Performed QDM data element OFFICE VISIT or QDM data element FACE-TO-FACE INTERACTION during measurement period) equals Yes, proceed to next Medication Administered Not Done.
- b. If Medication Administered Not Done QDM data element, MEDICAL REASON, or PATIENT REASON, or SYSTEM REASON, for Chemotherapy for Colon Cancer-Capectibine starts during Occurrence A of \$OVorF2FEncounter (Encounter Performed QDM data element OFFICE VISIT or QDM data element FACE-TO-FACE INTERACTION during measurement period), or Medication Order Not Done QDM data element, MEDICAL REASON, or PATIENT REASON, or SYSTEM REASON, for Chemotherapy for Colon Cancer-Capectibine Ingredient starts during Occurrence A of \$OVorF2FEncounter (Encounter Performed QDM data element OFFICE VISIT or QDM data element FACE-TO-FACE INTERACTION during measurement period) equals No, include in the No/Missing Data Submitted Count. Stop processing.

28. Check Medication Administered Not Done:

- a. If Medication Administered Not Done QDM data element, MEDICAL REASON, or PATIENT REASON, or SYSTEM REASON, for Chemotherapy for Colon Cancer-Fluorouracil starts during Occurrence A of OVorF2FEncounter (Encounter Performed QDM data element OFFICE VISIT or QDM data element FACE-TO-FACE INTERACTION during measurement period), or Medication Order Not Done QDM data element, MEDICAL REASON, or PATIENT REASON, or SYSTEM REASON, for Chemotherapy for Colon Cancer-Fluorouracil Ingredient starts during Occurrence A of \$OVorF2FEncounter (Encounter Performed QDM data element OFFICE VISIT or QDM data element FACE-TO-FACE INTERACTION during measurement period) equals Yes, proceed to next Medication Administered Not Done.
- b. If Medication Administered Not Done QDM data element, MEDICAL REASON, or PATIENT REASON, or SYSTEM REASON, for Chemotherapy for Colon Cancer-Fluorouracil starts during Occurrence A of OVorF2FEncounter (Encounter Performed QDM data element OFFICE VISIT or QDM data element FACE-TO-FACE INTERACTION during measurement period), or Medication Order Not Done QDM data element, MEDICAL REASON, or PATIENT REASON, or SYSTEM REASON, for Chemotherapy for Colon Cancer-Fluorouracil Ingredient starts during Occurrence A of \$OVorF2FEncounter (Encounter Performed QDM data element OFFICE VISIT or QDM data element FACE-TO-FACE INTERACTION during measurement period) equals No, include in the No/Missing Data Submitted Count. Stop processing.

29. Check Medication Administered Not Done:

- a. If Medication Administered Not Done QDM data element, MEDICAL REASON, or PATIENT REASON, or SYSTEM REASON, for Chemotherapy for Colon Cancer- Leucovorin and Levo- Leucovorin starts during Occurrence A of \$OVorF2FEncounter (Encounter Performed QDM data element OFFICE VISIT or QDM data element FACE-TO-FACE INTERACTION during measurement period) or Medication Order Not Done QDM data element, MEDICAL REASON, or PATIENT REASON, or SYSTEM REASON, for Chemotherapy for Colon Cancer- Leucovorin and Levo- Leucovorin Ingredient starts during Occurrence A of \$OVorF2FEncounter (Encounter Performed QDM data element OFFICE VISIT or QDM data element FACE-TO-FACE INTERACTION during measurement period) equals Yes, proceed to Medication Administered Not Done.
- b. If Medication Administered Not Done QDM data element, MEDICAL REASON, or PATIENT REASON, or SYSTEM REASON, for Chemotherapy for Colon Cancer- Leucovorin and Levo- Leucovorin starts during Occurrence A of \$OVorF2FEncounter (Encounter Performed QDM data element OFFICE VISIT or QDM data element FACE-TO-FACE INTERACTION during measurement period) or Medication Order Not Done QDM data element, MEDICAL REASON, or PATIENT REASON, or SYSTEM REASON, for Chemotherapy for Colon Cancer- Leucovorin and Levo- Leucovorin Ingredient starts during Occurrence A of \$OVorF2FEncounter (Encounter Performed QDM data element OFFICE VISIT or QDM data element FACE-TO-FACE INTERACTION during measurement period) equals No, include in the No/Missing Data Submitted Count. Stop processing.

30. Check Medication Administered Not Done:

- a. If Medication Administered Not Done QDM data element, MEDICAL REASON, or PATIENT REASON, or SYSTEM REASON, for Chemotherapy for Colon Cancer- Oxaliplatin starts during Occurrence A of \$OVorF2FEncounter (Encounter Performed QDM data element OFFICE VISIT or QDM data element FACE-TO-FACE INTERACTION during measurement period), or Medication Order not done QDM data element, MEDICAL REASON, or PATIENT REASON, or SYSTEM REASON, for Chemotherapy for Colon Cancer- Oxaliplatin Ingredient starts during Occurrence A of \$OVorF2FEncounter (Encounter Performed QDM data element OFFICE VISIT or QDM data element FACE-TO-FACE INTERACTION during measurement period) equals Yes, include in Denominator Exception count. Denominator Exception is represented by Letter c<sup>4</sup> in the sample calculation listed at the end of this document. Letter c<sup>4</sup> equals 0 patients in the sample calculation.
- b. If Medication Administered Not Done QDM data element, MEDICAL REASON, or PATIENT REASON, or SYSTEM REASON, for Chemotherapy for Colon Cancer- Oxaliplatin starts during Occurrence A of \$OVorF2FEncounter (Encounter Performed QDM data element OFFICE VISIT or QDM data element FACE-TO-FACE INTERACTION during measurement period), or Medication Order not done QDM data element, MEDICAL REASON, or PATIENT REASON, or SYSTEM REASON, for Chemotherapy for Colon Cancer- Oxaliplatin Ingredient starts during Occurrence A of \$OVorF2FEncounter (Encounter Performed QDM data element OFFICE VISIT or QDM data element FACE-TO-FACE INTERACTION during measurement period) equals No, include in the No/Missing Data Submitted Count. Stop processing.



#### SAMPLE CALCULATION:

**Performance Rate =**

$$\frac{\text{Numerator } (a^1 + a^2 + a^3 = 5 \text{ patients})}{\text{Denominator } (b=15 \text{ patients}) - \text{Denominator Exclusions (N/A)} - \text{Denominator Exceptions } (c^1 + c^2 + c^3 + c^4 = 6 \text{ patients})} = 55.56\%$$