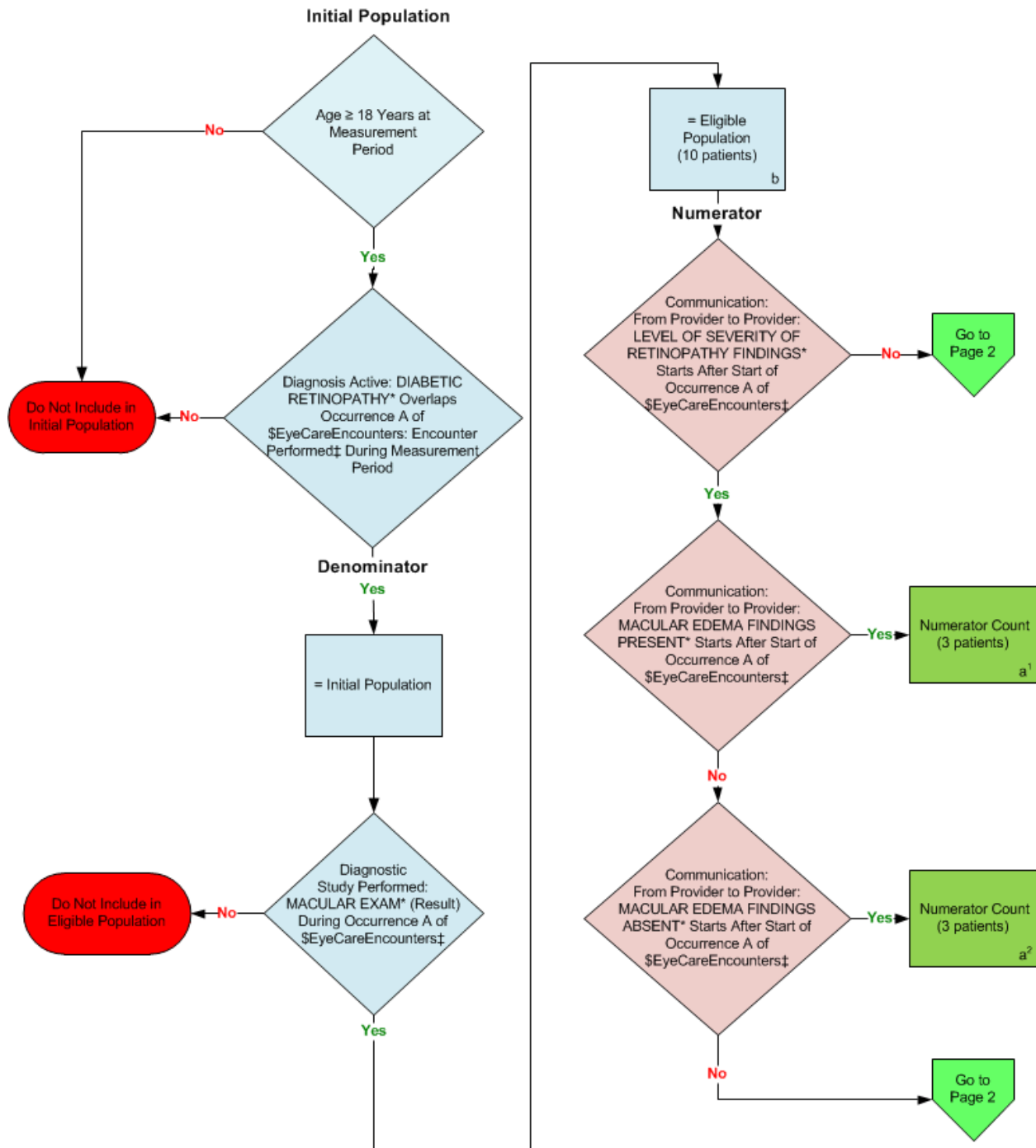


2014 eCQM Flow
Measure Identifier: CMS142v4

NQF 0089: Diabetic Retinopathy: Communication with the Physician Managing Ongoing Diabetes Care

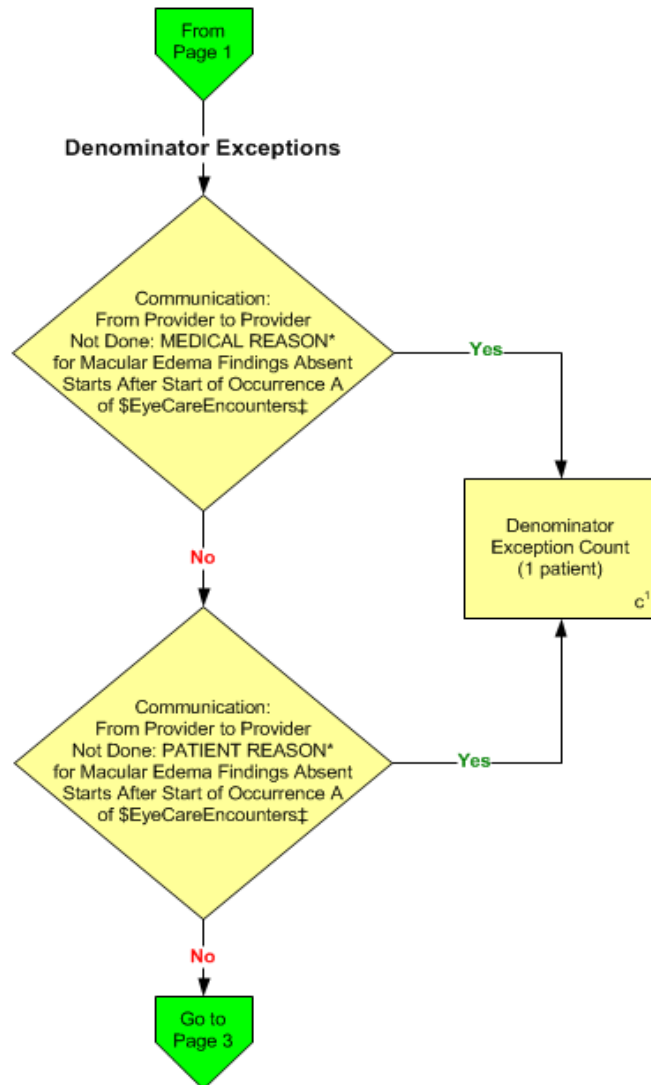


*Please refer to the specific section of the eCQM to identify the QDM data elements and associated value sets for use in reporting this eCQM.

‡For a list of appropriate encounters, please refer to the Population Criteria and associated value sets as specific data elements have not been listed.

2014 eCQM Flow
Measure Identifier: CMS142v4

NQF 0089: Diabetic Retinopathy: Communication with the Physician Managing Ongoing Diabetes Care

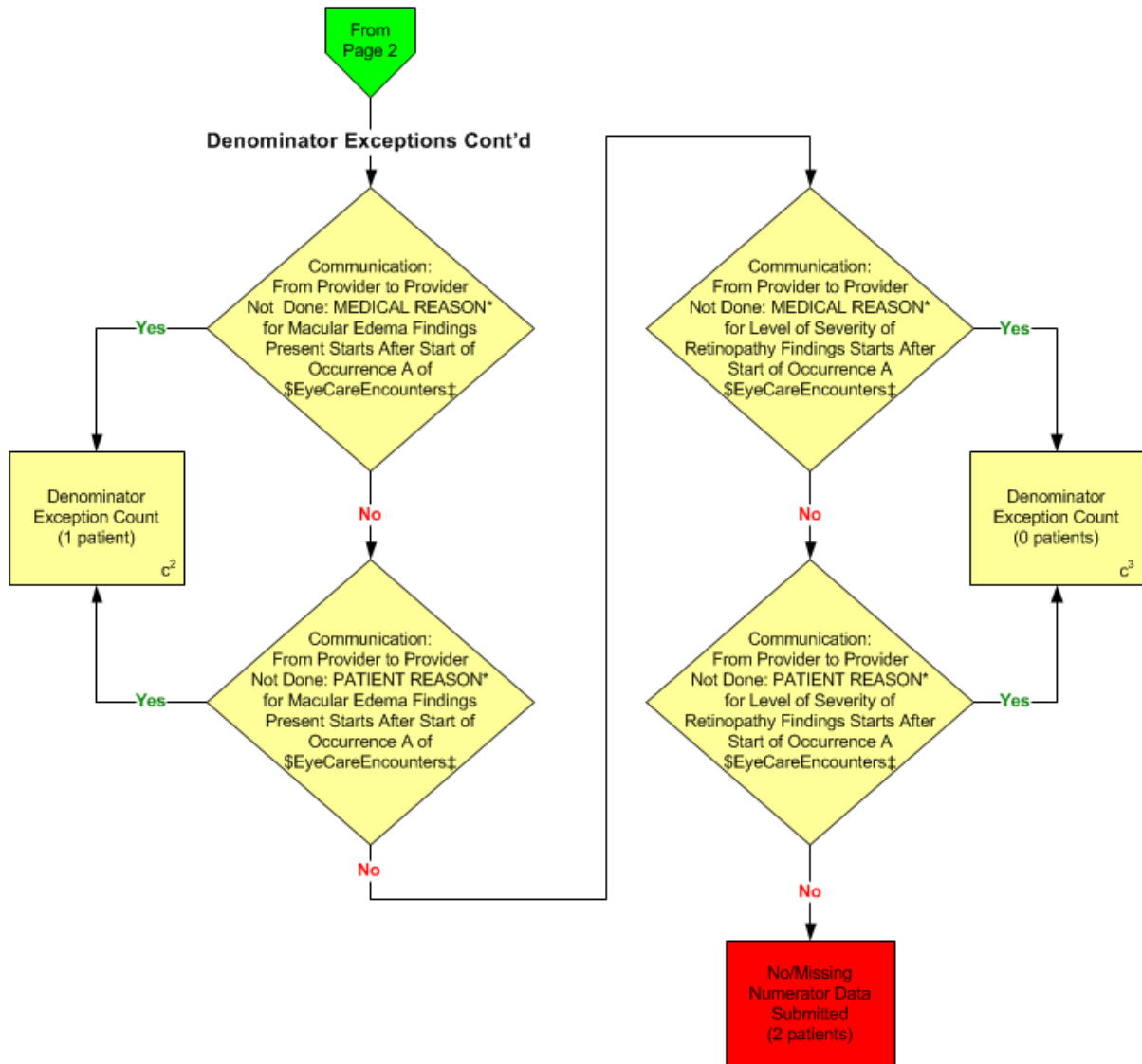


*Please refer to the specific section of the eCQM to identify the QDM data elements and associated value sets for use in reporting this eCQM.

‡ For a list of appropriate encounters, please refer to the Population Criteria and associated value sets as specific data elements have not been listed.

**2014 eCQM Flow
Measure Identifier: CMS142v4**

NQF 0089: Diabetic Retinopathy: Communication with the Physician Managing Ongoing Diabetes Care



*Please refer to the specific section of the eCQM to identify the QDM data elements and associated value sets for use in reporting this eCQM.

‡ For a list of appropriate encounters, please refer to the Population Criteria and associated value sets as specific data elements have not been listed.

SAMPLE CALCULATION:

Performance Rate =

$$\frac{\text{Numerator (a}^1 + \text{a}^2 = 6 \text{ patients)}}{\text{Denominator (b = 10 patients) - Denominator Exclusions (N/A) - Denominator Exceptions (c}^1 + \text{c}^2 + \text{c}^3 = 2 \text{ patients)}} = 75.00\%$$

2014 eCQM Flows

Measure Identifier: CMS142v4

NQF 0089: Diabetic Retinopathy: Communication with the Physician Managing Ongoing Diabetes Care

Please refer to the specific section of the eCQM to identify the Population Criteria and associated value sets for use in reporting this eCQM.

1. Start Initial Population
2. Check Age:
 - a. If the AGE greater than or equal to 18 years at measurement period equals No, do not include in Initial Population. Stop Processing.
 - b. If the AGE greater than or equal to 18 years at measurement period equals Yes, proceed to check Diagnosis Active.
3. Check Diagnosis Active:
 - a. If the Diagnosis Active QDM data element, DIABETIC RETINOPATHY, overlaps Occurrence A of \$EyeCareEncounters (Encounter Performed QDM data element, OPHTHALMOLOGICAL SERVICES, or QDM data element, CARE SERVICES IN LONG-TERM RESIDENTIAL FACILITY, or QDM data element, NURSING FACILITY VISIT, or QDM data element, OFFICE VISIT, or QDM data element, OUTPATIENT CONSULTATION, or QDM data element, FACE-TO-FACE INTERACTION, during measurement period) equals No, do not include in Initial Population. Stop Processing.
 - b. If the Diagnosis Active QDM data element, DIABETIC RETINOPATHY, overlaps Occurrence A of \$EyeCareEncounters (Encounter Performed QDM data element, OPHTHALMOLOGICAL SERVICES, or QDM data element, CARE SERVICES IN LONG-TERM RESIDENTIAL FACILITY, or QDM data element, NURSING FACILITY VISIT, or QDM data element, OFFICE VISIT, or QDM data element, OUTPATIENT CONSULTATION, or QDM data element, FACE-TO-FACE INTERACTION, during measurement period) equals Yes, proceed to Denominator.
4. Start Denominator
 - a. Denominator equals the Initial Population.
5. Check Diagnostic Study Performed:
 - a. If the Diagnostic Study Performed QDM data element, MACULAR EXAM (result), during Occurrence A of \$EyeCareEncounters (Encounter Performed QDM data element, OPHTHALMOLOGICAL SERVICES, or QDM data element, CARE SERVICES IN LONG-TERM RESIDENTIAL FACILITY, or QDM data element, NURSING FACILITY VISIT, or QDM data element, OFFICE VISIT, or QDM data element, OUTPATIENT CONSULTATION, or QDM data element, FACE-TO-FACE INTERACTION, during measurement period) equals No, do not include in Eligible Population.

8. Check Communication: From Provider to Provider:

VISIT, or QDM data element, OFFICE VISIT, or QDM data element, OUTPATIENT CONSULTATION, or QDM data element, FACE-TO-FACE INTERACTION, during measurement period) equals Yes, include in Numerator Count, which is represented by Letter a¹ in the sample calculation listed at the end of this document. Letter a¹ equals 3 patients in the sample calculation. Stop Processing.

9. Check Communication From: Provider to Provider:

- a. If the Communication: From Provider to Provider QDM data element, MACULAR EDEMA FINDINGS ABSENT, starts after start of Occurrence A of \$EyeCareEncounters (Encounter Performed QDM data element, OPHTHALMOLOGICAL SERVICES, or QDM data element, CARE SERVICES IN LONG-TERM RESIDENTIAL FACILITY, or QDM data element, NURSING FACILITY VISIT, or QDM data element, OFFICE VISIT, or QDM data element, OUTPATIENT CONSULTATION, or QDM data element, FACE-TO-FACE INTERACTION, during measurement period) equals No, proceed to check Denominator Exceptions.
- b. b. If the Communication: From Provider to Provider QDM data element, MACULAR EDEMA FINDINGS ABSENT, starts after start of Occurrence A of \$EyeCareEncounters (Encounter Performed QDM data element, OPHTHALMOLOGICAL SERVICES, or QDM data element, CARE SERVICES IN LONG-TERM RESIDENTIAL FACILITY, or QDM data element, NURSING FACILITY VISIT, or QDM data element, OFFICE VISIT, or QDM data element, OUTPATIENT CONSULTATION, or QDM data element, FACE-TO-FACE INTERACTION, during measurement period) equals Yes, include in Numerator Count, which is represented by Letter a2 in the sample calculation listed at the end of this document. Letter a2 equals 3 patients in the sample calculation. Stop Processing.

10. Denominator Exceptions

11. Check Communication: From Provider to Provider Not Done:

- a. If the Communication From: Provider to Provider Not Done QDM data element, MEDICAL REASON, for Macular Edema Findings Absent, starts after start of Occurrence A \$EyeCareEncounters (Encounter Performed QDM data element, OPHTHALMOLOGICAL SERVICES, or QDM data element, CARE SERVICES IN LONG-TERM RESIDENTIAL FACILITY, or QDM data element, NURSING FACILITY VISIT, or QDM data element, OFFICE VISIT, or QDM data element, OUTPATIENT CONSULTATION, or QDM data element, FACE-TO-FACE INTERACTION, during measurement period) equals No, proceed to check next Communication: From Provider to Provider Not Done.
- b. If the Communication From: Provider to Provider Not Done QDM data element, MEDICAL REASON, for Macular Edema Findings Absent, starts after start of Occurrence A \$EyeCareEncounters (Encounter Performed QDM data element, OPHTHALMOLOGICAL SERVICES, or QDM data element, CARE SERVICES IN LONG-TERM RESIDENTIAL FACILITY, or QDM data element, NURSING FACILITY VISIT, or QDM data element, OFFICE VISIT, or QDM data element, OUTPATIENT CONSULTATION, or QDM data element, FACE-TO-FACE INTERACTION, during measurement period) equals Yes, include in Denominator Exclusion Count, which is

represented by letter c1 in the sample calculation listed at the end of this document.
Letter c1 equals 1 patient. Stop Processing.

12. Check Communication: From Provider to Provider Not Done:

- a. If the Communication: From Provider to Provider Not Done QDM data element, PATIENT REASON, for Macular Edema Findings Absent, starts after start of Occurrence A of \$EyeCareEncounters (Encounter Performed QDM data element, OPHTHALMOLOGICAL SERVICES, or QDM data element, CARE SERVICES IN LONG-TERM RESIDENTIAL FACILITY, or QDM data element, NURSING FACILITY VISIT, or QDM data element, OFFICE VISIT, or QDM data element, OUTPATIENT CONSULTATION, or QDM data element, FACE-TO-FACE INTERACTION, during measurement period) equals No, proceed to check next Communication: From Provider to Provider Not Done.
- b. b. If the Communication: From Provider to Provider Not Done QDM data element, PATIENT REASON, for Macular Edema Findings Absent, starts after start of Occurrence A of \$EyeCareEncounters (Encounter Performed QDM data element, OPHTHALMOLOGICAL SERVICES, or QDM data element, CARE SERVICES IN LONG-TERM RESIDENTIAL FACILITY, or QDM data element, NURSING FACILITY VISIT, or QDM data element, OFFICE VISIT, or QDM data element, OUTPATIENT CONSULTATION, or QDM data element, FACE-TO-FACE INTERACTION, during measurement period) equals Yes, include in Denominator Exclusion Count, which is represented by Letter c1 in the sample calculation listed at the end of this document. Letter c1 equals 1 patient. Stop Processing.

13. Check Communication: From Provider to Provider Not Done:

- a. If the Communication: From Provider to Provider Not Done QDM data element, MEDICAL REASON, for Macular Edema Findings Present, starts after start of Occurrence A of \$EyeCareEncounters (Encounter Performed QDM data element, OPHTHALMOLOGICAL SERVICES, or QDM data element, CARE SERVICES IN LONG-TERM RESIDENTIAL FACILITY, or QDM data element, NURSING FACILITY VISIT, or QDM data element, OFFICE VISIT, or QDM data element, OUTPATIENT CONSULTATION, or QDM data element, FACE-TO-FACE INTERACTION, during measurement period) equals No, proceed to check next Communication: From Provider to Provider Not Done.
- b. If the Communication: From Provider to Provider Not Done QDM data element, MEDICAL REASON, for Macular Edema Findings Present, starts after start of Occurrence A of \$EyeCareEncounters (Encounter Performed QDM data element, OPHTHALMOLOGICAL SERVICES, or QDM data element, CARE SERVICES IN LONG-TERM RESIDENTIAL FACILITY, or QDM data element, NURSING FACILITY VISIT, or QDM data element, OFFICE VISIT, or QDM data element, OUTPATIENT CONSULTATION, or QDM data element, FACE-TO-FACE INTERACTION, during measurement period) equals Yes, include in Denominator Exclusion Count, which is represented by Letter c² in the sample calculation listed at the end of this document. Letter c² equals 1 patient. Stop Processing.

14. Check Communication: From Provider to Provider Not Done:

- a. If the Communication: From Provider to Provider Not Done QDM data element, PATIENT REASON, for Macular Edema Findings Present, starts after start of Occurrence A of \$EyeCareEncounters (Encounter Performed QDM data element, OPHTHALMOLOGICAL SERVICES, or QDM data element, CARE SERVICES IN LONG-TERM RESIDENTIAL FACILITY, or QDM data element, NURSING FACILITY VISIT, or QDM data element, OFFICE VISIT, or QDM data element, OUTPATIENT CONSULTATION, or QDM data element, FACE-TO-FACE INTERACTION, during measurement period) equals No, proceed to check next Communication: From Provider to Provider Not Done.
- b. If the Communication: From Provider to Provider Not Done QDM data element, PATIENT REASON, for Macular Edema Findings Present, starts after start of Occurrence A of \$EyeCareEncounters (Encounter Performed QDM data element, OPHTHALMOLOGICAL SERVICES, or QDM data element, CARE SERVICES IN LONG-TERM RESIDENTIAL FACILITY, or QDM data element, NURSING FACILITY VISIT, or QDM data element, OFFICE VISIT, or QDM data element, OUTPATIENT CONSULTATION, or QDM data element, FACE-TO-FACE INTERACTION, during measurement period) equals Yes, include in Denominator Exclusion Count, which is represented by letter c2 in the sample calculation listed at the end of this document. Letter c2 equals 1 patient. Stop Processing.

15. Check Communication: From Provider to Provider Not Done:

- a. If the Communication: From Provider to Provider Not Done QDM data element, MEDICAL REASON, for Level of Severity of Retinopathy Findings, starts after start of Occurrence A \$EyeCareEncounters (Encounter Performed QDM data element, OPHTHALMOLOGICAL SERVICES, or QDM data element, CARE SERVICES IN LONG-TERM RESIDENTIAL FACILITY, or QDM data element, NURSING FACILITY VISIT, or QDM data element, OFFICE VISIT, or QDM data element, OUTPATIENT CONSULTATION, or QDM data element, FACE-TO-FACE INTERACTION, during measurement period) equals No, proceed to check next Communication: From Provider to Provider Not Done.
- b. If the Communication: From Provider to Provider Not Done QDM data element, MEDICAL REASON, for Level of Severity of Retinopathy Findings, starts after start of Occurrence A \$EyeCareEncounters (Encounter Performed QDM data element, OPHTHALMOLOGICAL SERVICES, or QDM data element, CARE SERVICES IN LONG-TERM RESIDENTIAL FACILITY, or QDM data element, NURSING FACILITY VISIT, or QDM data element, OFFICE VISIT, or QDM data element, OUTPATIENT CONSULTATION, or QDM data element, FACE-TO-FACE INTERACTION, during measurement period) equals Yes, include in Denominator Exclusion Count, which is represented by letter c3 in the sample calculation listed at the end of this document. Letter c3 equals 0 patients. Stop Processing.

16. Check Communication: From Provider to Provider Not Done:

- a. If the Communication: From Provider to Provider Not Done QDM data element, PATIENT REASON, for Level of Severity of Retinopathy Findings, starts after start of Occurrence A of \$EyeCareEncounters (Encounter Performed QDM data element, OPHTHALMOLOGICAL SERVICES, or QDM data element, CARE SERVICES IN

LONG-TERM RESIDENTIAL FACILITY, or QDM data element, NURSING FACILITY VISIT, or QDM data element, OFFICE VISIT, or QDM data element, OUTPATIENT CONSULTATION, or QDM data element, FACE-TO-FACE INTERACTION, during measurement period) equals No, include in the No/Missing Data Submitted. Stop Processing.

- b. If the Communication: From Provider to Provider Not Done QDM data element, PATIENT REASON, for Level of Severity of Retinopathy Findings, starts after start of Occurrence A of \$EyeCareEncounters (Encounter Performed QDM data element, OPHTHALMOLOGICAL SERVICES, or QDM data element, CARE SERVICES IN LONG-TERM RESIDENTIAL FACILITY, or QDM data element, NURSING FACILITY VISIT, or QDM data element, OFFICE VISIT, or QDM data element, OUTPATIENT CONSULTATION, or QDM data element, FACE-TO-FACE INTERACTION, during measurement period) equals Yes, include in Denominator Exclusion Count, which is represented by Letter c3 in the sample calculation listed at the end of this document. Letter c3 equals 1 patient. Stop Processing.

SAMPLE CALCULATION:

Performance Rate =

$$\frac{\text{Numerator } (a^1 + a^2 = 6 \text{ patients})}{\text{Denominator } (b = 10 \text{ patients}) - \text{Denominator Exclusions (N/A)} - \text{Denominator Exceptions } (c^1 + c^2 + c^3 = 2 \text{ patients})} = 75.00\%$$