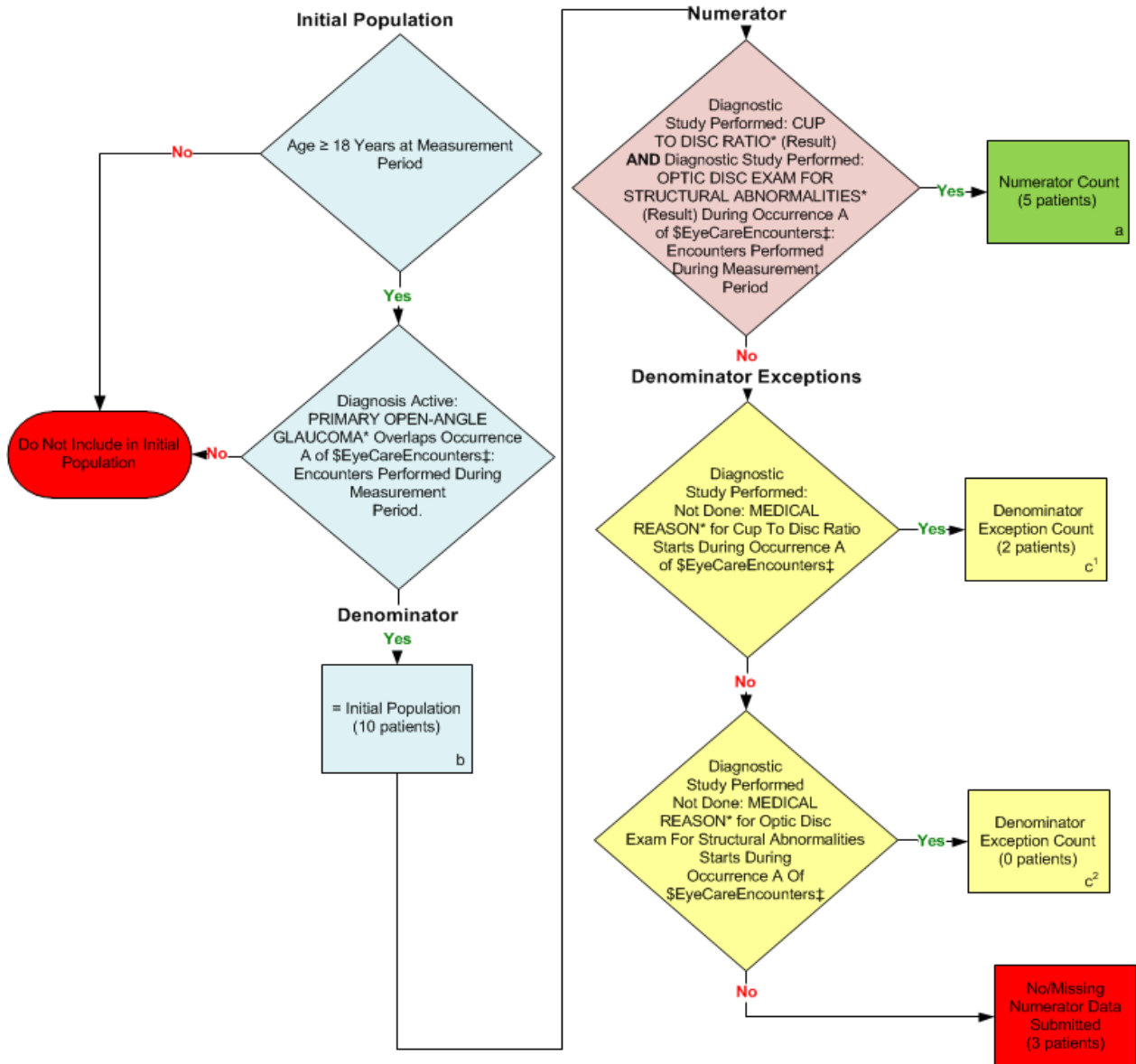


2014 eCQM Flow
Measure Identifier: CMS143v4
 NQF 0086: Primary Open-Angle Glaucoma (POAG): Optic Nerve Evaluation



*Please refer to the specific section of the eCQM to identify the QDM data elements and associated value sets for use in reporting this eCQM.
 ‡ For a list of appropriate encounters, please refer to the Population Criteria and associated value sets as specific data elements have not been listed.

SAMPLE CALCULATION:

Performance Rate =

$$\frac{\text{Numerator (a=5 patients)}}{\text{Denominator (b=10 patients) - Denominator Exclusions (N/A) - Denominator Exceptions (c¹+ c²=2)}} = 62.50\%$$

2014 eCQM Flows
Measure Identifier: CMS143v4
NQF 0086: Primary Open-Angle Glaucoma (POAG): Optic Nerve Evaluation

Please refer to the specific section of the eCQM to identify the Population Criteria and associated value sets for use in reporting this eCQM.

1. Start Initial Population
2. Check Age:
 - a. If the AGE greater than or equal to 18 years of age at measurement period equals No, do not include in Initial Population. Stop Processing.
 - b. If the AGE greater than or equal to 18 years of age at measurement period equals Yes, continue processing and proceed to check Diagnosis Active.
3. Check Diagnosis Active:
 - a. If the Diagnosis Active QDM data element, PRIMARY OPEN ANGLE GLAUCOMA, overlaps Occurrence A of \$EyeCareEncounters (Encounter Performed QDM data element OPHTHALMOLOGICAL SERVICES, or QDM data element CARE SERVICES IN LONG-TERM RESIDENTIAL FACILITY, or NURSING FACILITY VISIT, or OFFICE VISIT, or OUTPATIENT CONSULTATION, or FACE-TO-FACE INTERACTION during measurement period), equals Yes include in Initial Population and proceed to Denominator.
 - b. If the Diagnosis Active QDM data element, PRIMARY OPEN ANGLE GLAUCOMA, overlaps Occurrence A of \$EyeCareEncounters (Encounter Performed QDM data element OPHTHALMOLOGICAL SERVICES, or QDM data element CARE SERVICES IN LONG-TERM RESIDENTIAL FACILITY, or NURSING FACILITY VISIT, or OFFICE VISIT, or OUTPATIENT CONSULTATION, or FACE-TO-FACE INTERACTION during measurement period), equals No, do not include in Initial Population. Stop Processing.
4. Start Denominator
 - a. Denominator equals the Initial Population. Denominator is represented by the Letter b in the sample calculation listed at the end of this document. Letter b equals 10 patients in the sample calculation.
5. Start Numerator
6. Check Diagnostic Study Performed:
 - a. If the Diagnostic Study Performed QDM data element CUP TO DISC RATIO (result) AND QDM data element OPTIC DISC EXAM FOR STRUCTURAL ABNORMALITIES (result) during Occurrence A of \$EyeCareEncounters (Encounter Performed QDM data element OPHTHALMOLOGICAL SERVICES,

or QDM data element CARE SERVICES IN LONG-TERM RESIDENTIAL FACILITY, or NURSING FACILITY VISIT, or OFFICE VISIT, or OUTPATIENT CONSULTATION, or FACE-TO-FACE INTERACTION during measurement period), equals Yes, include in the Numerator count. The Numerator is represented by the Letter a in the sample calculation listed at the end of this document. Letter a equals 5 patients in the sample calculation.

- b. If the Diagnostic Study Performed QDM data element CUP TO DISC RATIO (result) AND QDM data element OPTIC DISC EXAM FOR STRUCTURAL ABNORMALITIES (result) during Occurrence A of \$EyeCareEncounters (Encounter Performed QDM data element OPHTHALMOLOGICAL SERVICES, or QDM data element CARE SERVICES IN LONG-TERM RESIDENTIAL FACILITY, or NURSING FACILITY VISIT, or OFFICE VISIT, or OUTPATIENT CONSULTATION, or FACE-TO-FACE INTERACTION during measurement period), equals No, proceed to check Denominator Exceptions.

7. Start Denominator Exceptions:

8. Check Diagnostic Study Performed Not Done:

- a. If the Diagnostic Study Performed Not Done QDM data element MEDICAL REASON for Cup to Disc Ratio starts during Occurrence A of \$EyeCareEncounters (Encounter Performed QDM data element OPHTHALMOLOGICAL SERVICES, or QDM data element CARE SERVICES IN LONG-TERM RESIDENTIAL FACILITY, or NURSING FACILITY VISIT, or OFFICE VISIT, or OUTPATIENT CONSULTATION, or FACE-TO-FACE INTERACTION during measurement period), equals Yes, include in the Denominator Exception count. The Denominator Exception is represented by the Letter c¹ in the sample calculation listed at the end of this document. Letter c¹ equals 2 patients in the sample calculation.
- b. If the Diagnostic Study Performed Not Done QDM data element MEDICAL REASON for Cup to Disc Ratio starts during Occurrence A of \$EyeCareEncounters (Encounter Performed QDM data element OPHTHALMOLOGICAL SERVICES, or QDM data element CARE SERVICES IN LONG-TERM RESIDENTIAL FACILITY, or NURSING FACILITY VISIT, or OFFICE VISIT, or OUTPATIENT CONSULTATION, or FACE-TO-FACE INTERACTION during measurement period), equals No, proceed to check next Diagnostic Study Performed Not Done.

9. Check Diagnostic Study Result Not Done:

- a. If the Diagnostic Study Result Not Done QDM data element MEDICAL REASON for Optic Disc Exam for Structural Abnormalities starts during Occurrence A of \$EyeCareEncounters (Encounter Performed QDM data element OPHTHALMOLOGICAL SERVICES, or QDM data element CARE SERVICES IN LONG-TERM RESIDENTIAL FACILITY, or NURSING FACILITY VISIT, or OFFICE VISIT, or OUTPATIENT CONSULTATION, or FACE-TO-FACE

INTERACTION during measurement period), equals Yes, include in the Denominator Exception count. The Denominator Exception is represented by the Letter c² in the sample calculation listed at the end of this document. Letter c² equals 0 patients in the sample calculation.

- b. If the Diagnostic Study Result Not Done QDM data element MEDICAL REASON for Optic Disc Exam for Structural Abnormalities starts during Occurrence A of \$EyeCareEncounters (Encounter Performed QDM data element OPHTHALMOLOGICAL SERVICES, or QDM data element CARE SERVICES IN LONG-TERM RESIDENTIAL FACILITY, or NURSING FACILITY VISIT, or OFFICE VISIT, or OUTPATIENT CONSULTATION, or FACE-TO-FACE INTERACTION during measurement period), equals No, include in No/Missing Numerator Data Submitted. Stop Processing.

SAMPLE CALCULATION:

Performance Rate =

$$\frac{\text{Numerator (a=5 patients)}}{\text{Denominator (b=10 patients) - Denominator Exclusions (N/A) - Denominator Exceptions (c¹ + c² = 2)}} = 62.50\%$$