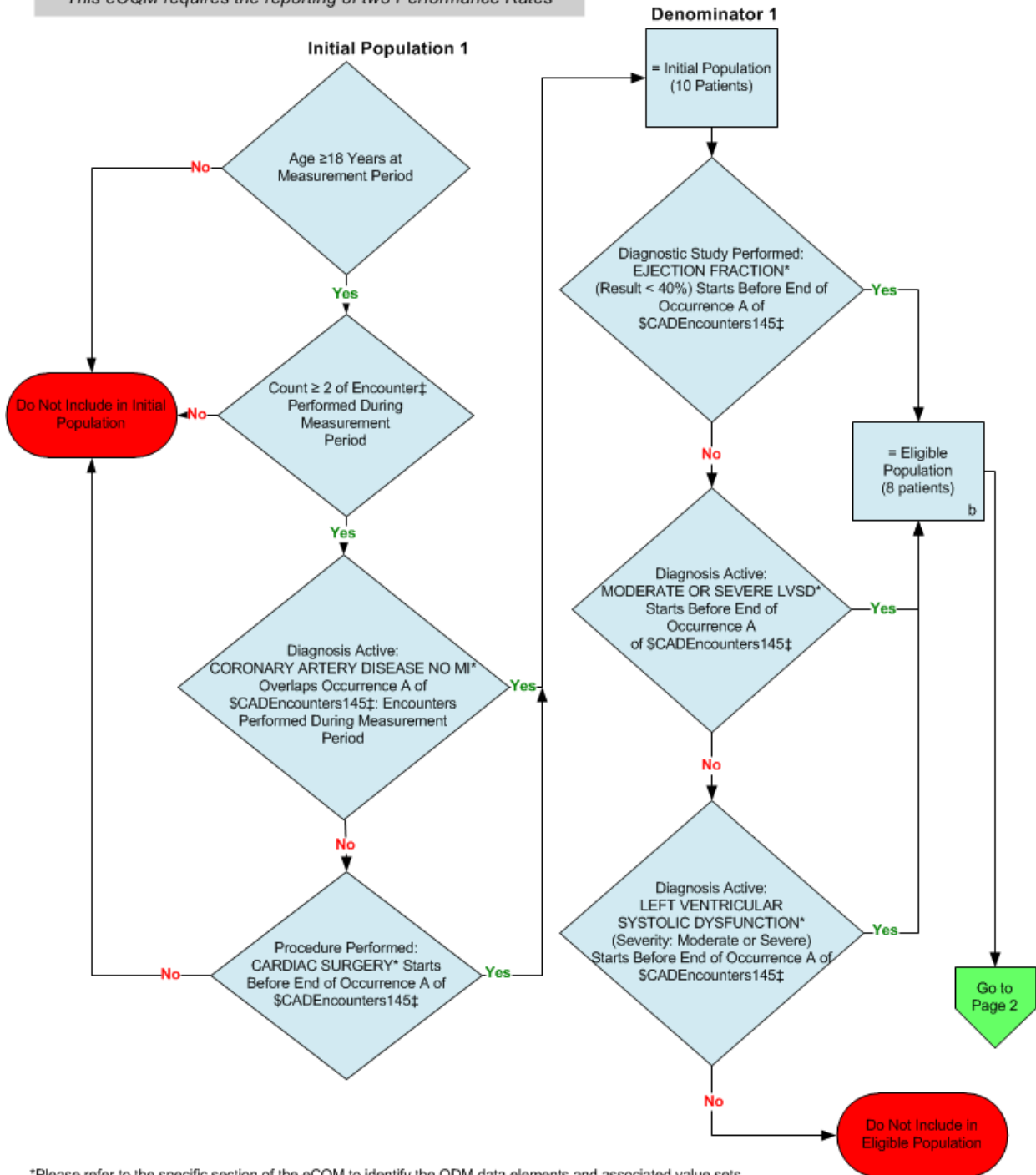


**2014 eCQM Flow**  
**Measure Identifier: CMS145v4**

NQF 0070: Coronary Artery Disease (CAD): Beta-Blocker Therapy-Prior Myocardial Infarction (MI) or Left Ventricular Systolic Dysfunction (LVEF < 40%)

*This eCQM requires the reporting of two Performance Rates*

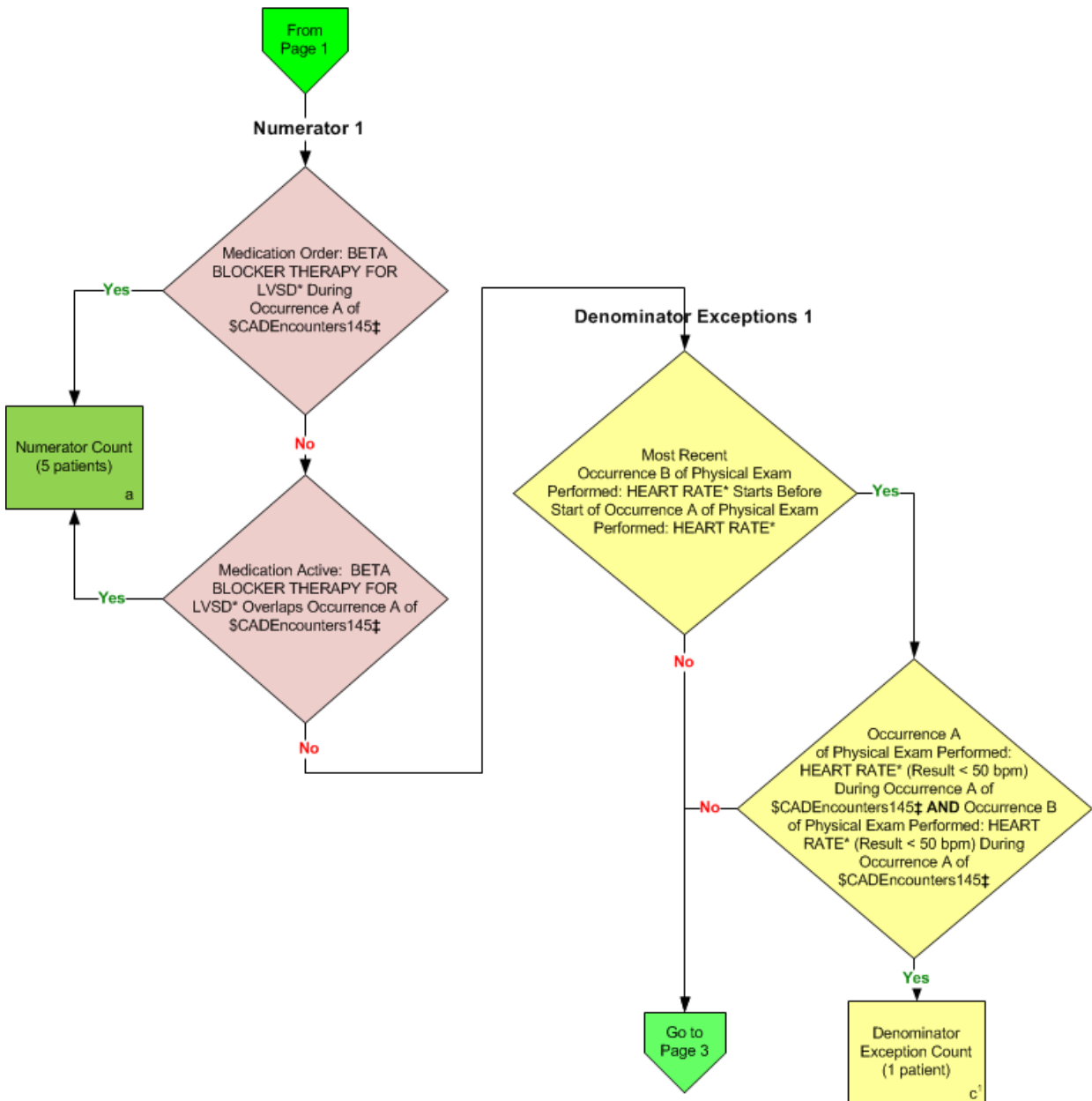


\*Please refer to the specific section of the eCQM to identify the QDM data elements and associated value sets for use in reporting this eCQM.

‡ For a list of appropriate encounters, please refer to the Population Criteria and associated value sets as specific data elements have not been listed.

**2014 eCQM Flow**  
**Measure Identifier: CMS145v4**

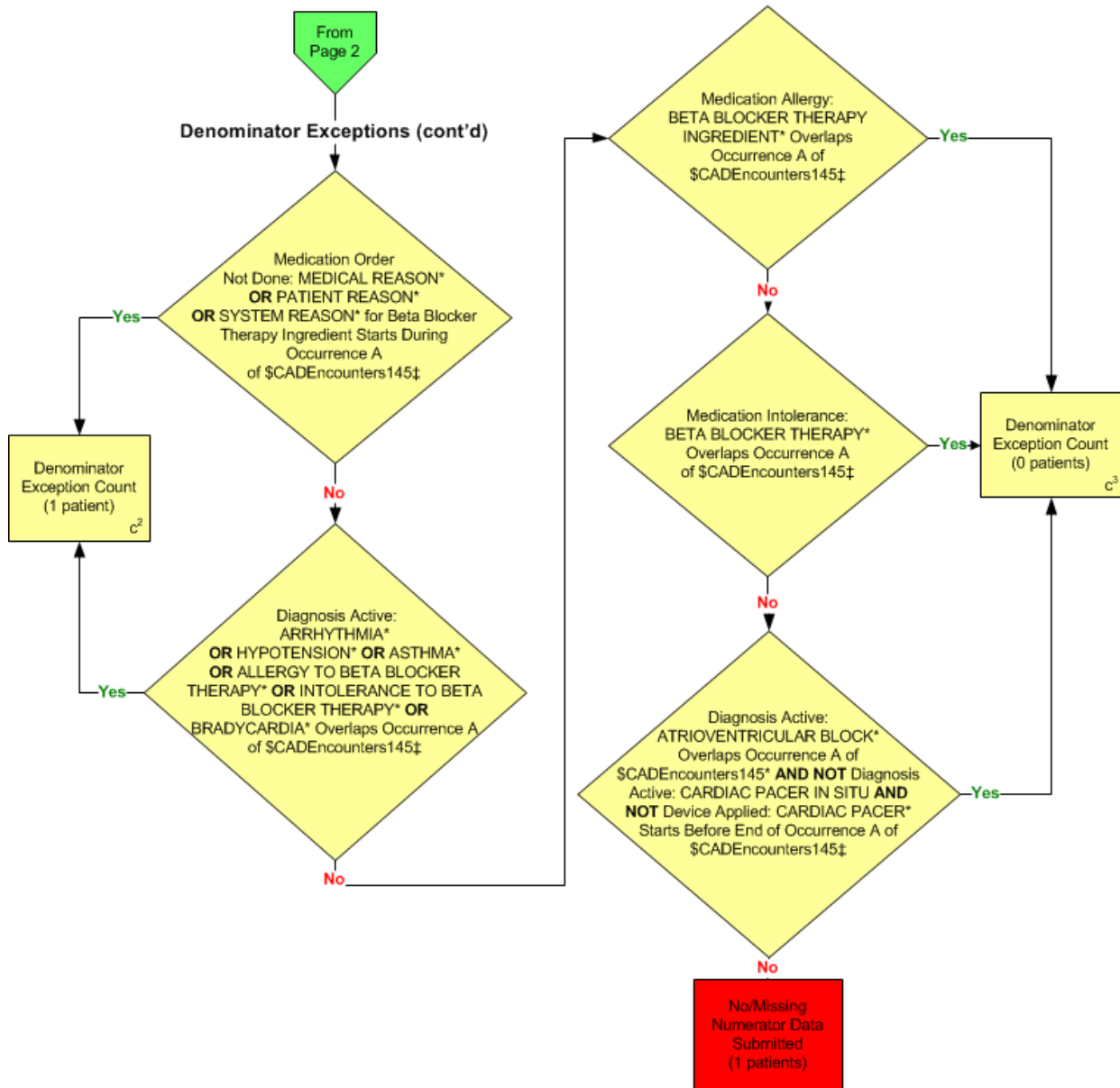
NQF 0070: Coronary Artery Disease (CAD): Beta-Blocker Therapy-Prior Myocardial Infarction (MI) or Left Ventricular Systolic Dysfunction (LVEF < 40%)



\*Please refer to the specific section of the eCQM to identify the QDM data elements and associated value sets for use in reporting this eCQM.  
 ‡ For a list of appropriate encounters, please refer to the Population Criteria and associated value sets as specific data elements have not been listed.

**2014 eCQM Flow**  
**Measure Identifier: CMS145v4**

NQF 0070: Coronary Artery Disease (CAD): Beta-Blocker Therapy-Prior Myocardial Infarction (MI) or Left Ventricular Systolic Dysfunction (LVEF < 40%)



\*Please refer to the specific section of the eCQM to identify the QDM data elements and associated value sets for use in reporting this eCQM.

‡ For a list of appropriate encounters, please refer to the Population Criteria and associated value sets as specific data elements have not been listed.

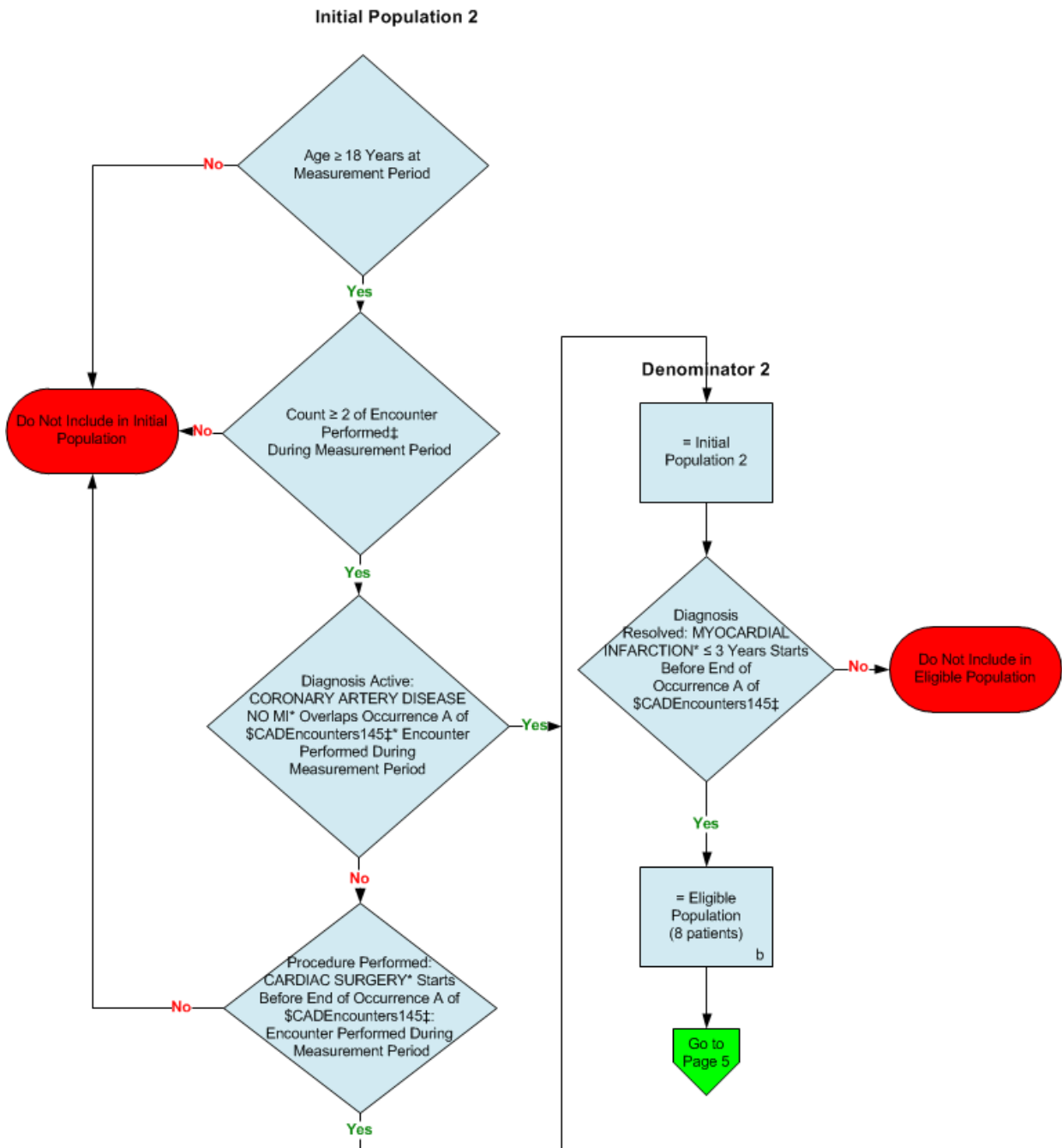
**SAMPLE CALCULATION: Population Criteria 1**

**Performance Rate=**

$$\frac{\text{Numerator (a= 5 patients)}}{\text{Denominator (b=8 patients) – Denominator Exclusions (N/A) – Denominator Exceptions (c¹ + c² + c³ = 2 patients)}} = 83.33\%$$

**2014 eCQM Flow**  
**Measure Identifier: CMS145v4**

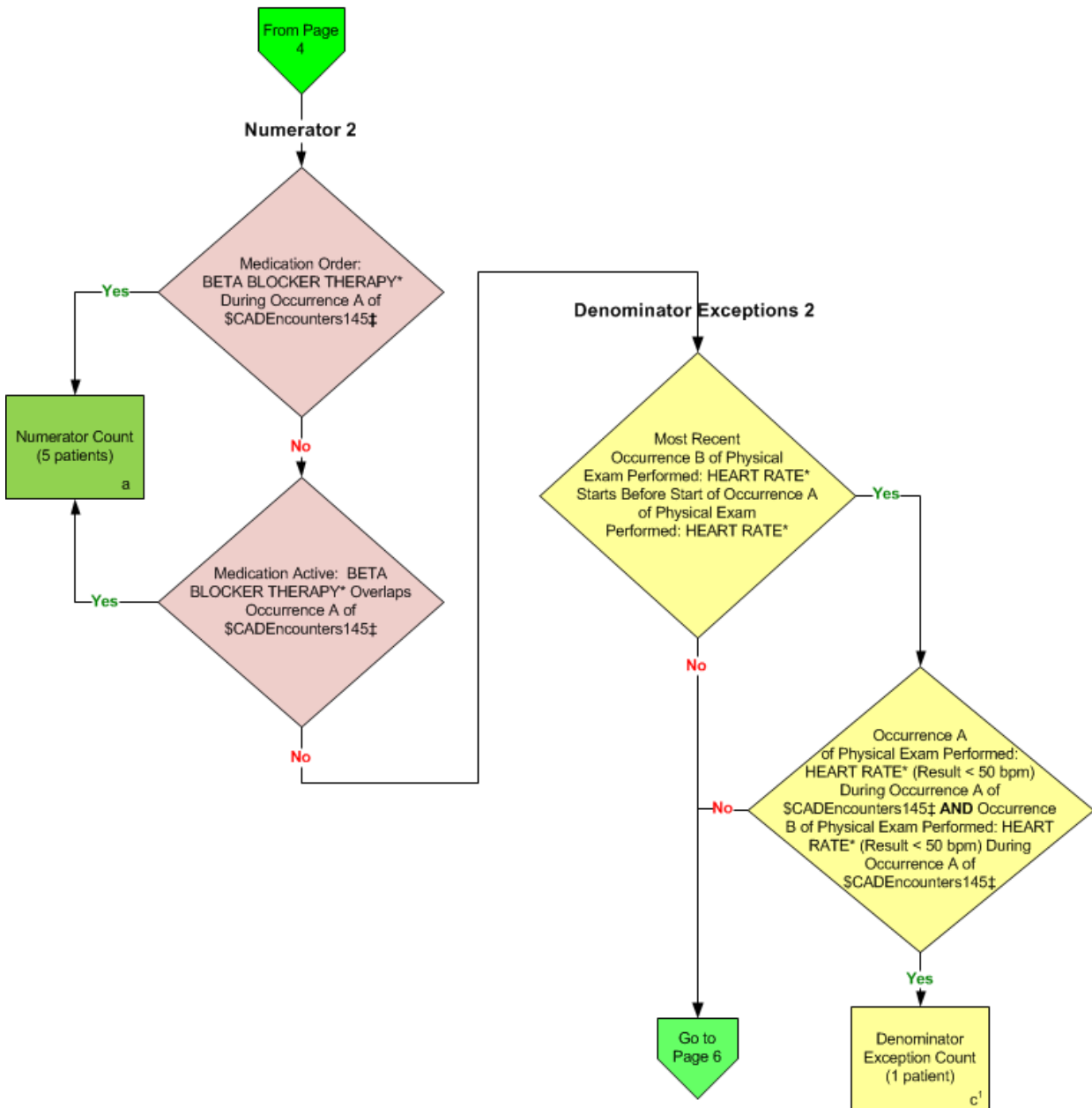
NQF 0070: Coronary Artery Disease (CAD): Beta-Blocker Therapy-Prior Myocardial Infarction (MI) or Left Ventricular Systolic Dysfunction (LVEF < 40%)



\*Please refer to the specific section of the eCQM to identify the QDM data elements and associated value sets for use in reporting this eCQM.  
 ‡ For a list of appropriate encounters, please refer to the Population Criteria and associated value sets as specific data elements have not been listed.

**2014 eCQM Flow**  
**Measure Identifier: CMS145v4**

NQF 0070: Coronary Artery Disease (CAD): Beta-Blocker Therapy-Prior Myocardial Infarction (MI) or Left Ventricular Systolic Dysfunction (LVEF < 40%)

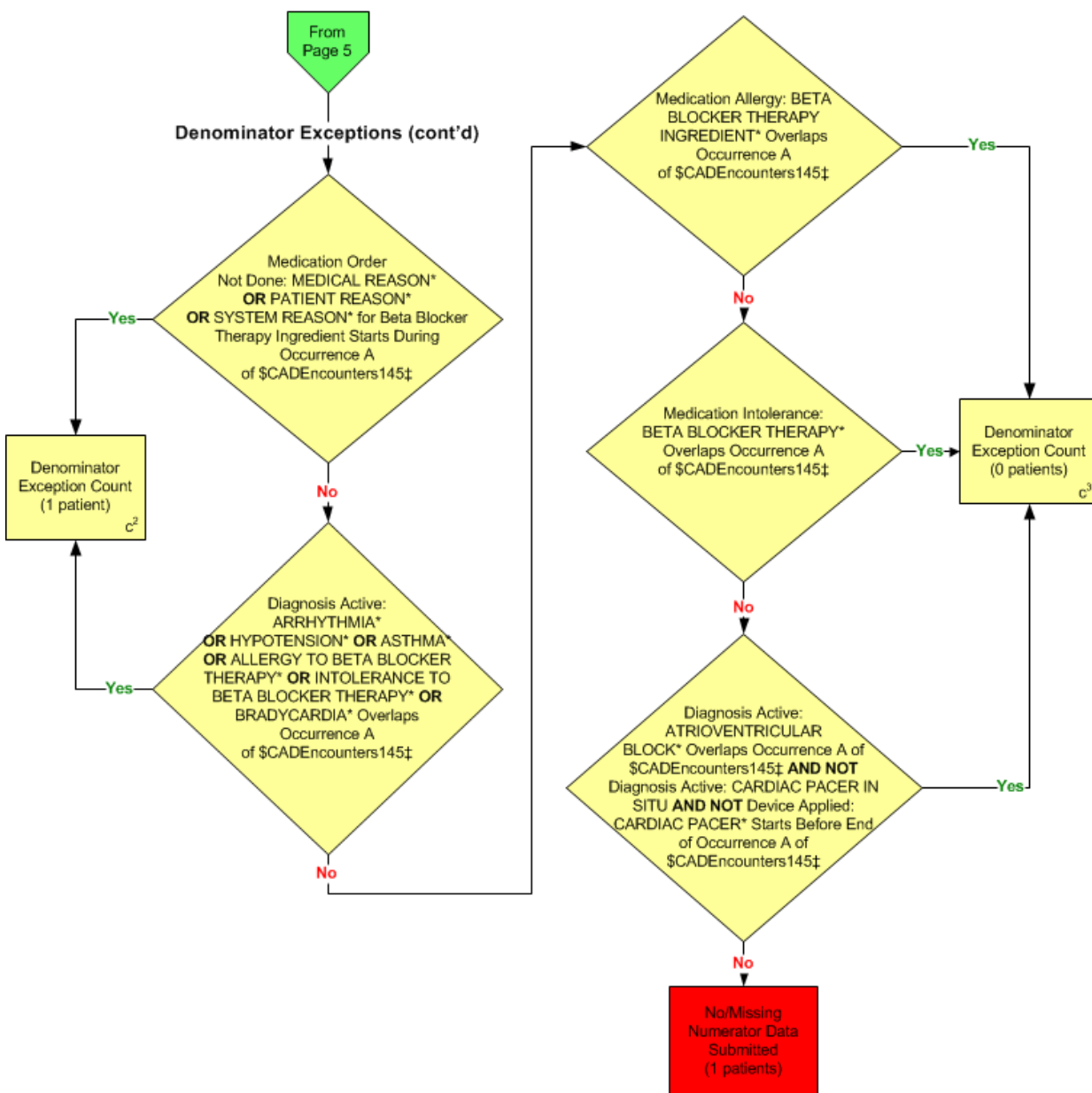


\*Please refer to the specific section of the eCQM to identify the QDM data elements and associated value sets for use in reporting this eCQM.

‡ For a list of appropriate encounters, please refer to the Population Criteria and associated value sets as specific data elements have not been listed.

**2014 eCQM Flow**  
**Measure Identifier: CMS145v4**

NQF 0070: Coronary Artery Disease (CAD): Beta-Blocker Therapy-Prior Myocardial Infarction (MI) or Left Ventricular Systolic Dysfunction (LVEF < 40%)



\*Please refer to the specific section of the eCQM to identify the QDM data elements and associated value sets for use in reporting this eCQM

‡ For a list of appropriate encounters, please refer to the Population Criteria and associated value sets as specific data elements have not been listed.

**SAMPLE CALCULATION: Population Criteria 2**

**Performance Rate=**

$$\frac{\text{Numerator (a= 5 patients)}}{\text{Denominator (b=8 patients) – Denominator Exclusions (N/A) – Denominator Exceptions (c¹ + c² + c³ = 2 patients)}} = 83.33\%$$

## 2014 eCQM Flows

Measure Identifier: CMS145v4

NQF 0070: Coronary Artery Disease (CAD): Beta-Blocker Therapy – Prior Myocardial Infarction (MI) or Left Ventricular Systolic Dysfunction (LVEF less than 40%)

*This eCQM requires the reporting of two Performance Rates*

Please refer to the specific section of the eCQM to identify the Population Criteria and associated value sets for use in reporting this eCQM.

1. Start Initial Population
2. Check Age:
  - a. If the AGE greater than or equal to 18 years at measurement period equals No, do not include in Initial Population. Stop Processing.
  - b. If the AGE greater than or equal to 18 years at measurement period equals Yes, proceed to check Encounter Performed.
3. Check Encounter Performed: Total number of encounters must be greater than or equal to 2:
  - a. If the Encounter Performed QDM data element, OFFICE VISIT, or OUTPATIENT CONSULTATION, or NURSING FACILITY VISIT, or CARE SERVICES IN LONG-TERM RESIDENTIAL FACILITY, or HOME HEALTHCARE SERVICES, or PATIENT PROVIDER INTERACTION during the measurement period equals Yes, check total number of encounters are greater than or equal to 2. If count is greater than or equal to 2, continue to proceed to Diagnosis Active.
  - b. If the Encounter Performed QDM data element, OFFICE VISIT, or OUTPATIENT CONSULTATION, or NURSING FACILITY VISIT, or CARE SERVICES IN LONG-TERM RESIDENTIAL FACILITY, or HOME HEALTHCARE SERVICES, or PATIENT PROVIDER INTERACTION during the measurement period equals No, do not include in the Initial Population. Proceed to check Diagnosis Active.
4. Check Diagnosis Active:
  - a. If the Diagnosis Active QDM data element, CORONARY ARTERY DISEASE NO MI overlaps Occurrence A of \$CADEncounters145 (Encounter Performed QDM data element, OFFICE VISIT, or QDM data element OUTPATIENT CONSULTATION, or NURSING FACILITY VISIT, or CARE SERVICES IN LONG-TERM RESIDENTIAL FACILITY, or FACE-TO-FACE INTERACTION during measurement period) equals No, proceed to check Procedure Performed.
  - b. If the Diagnosis Active QDM data element, CORONARY ARTERY DISEASE NO MI overlaps Occurrence A of \$CADEncounters145 (Encounter Performed QDM data element, OFFICE VISIT, or QDM data element OUTPATIENT CONSULTATION, or NURSING FACILITY VISIT, or CARE SERVICES IN LONG-TERM RESIDENTIAL FACILITY, or FACE-TO-FACE INTERACTION during measurement period) equals Yes, include in Initial Population 1 and proceed to check Denominator 1.
5. Check Procedure Performed:

- a. If the Procedure Performed QDM data element, CARDIAC SURGERY, starts before end of Occurrence A of \$CADEncounters145 (Encounter Performed QDM data element, OFFICE VISIT, or QDM data element OUTPATIENT CONSULTATION, or NURSING FACILITY VISIT, or CARE SERVICES IN LONG-TERM RESIDENTIAL FACILITY, or FACE-TO-FACE INTERACTION during measurement period) equals No, do not include in the Initial Population 1. Stop Processing.
  - b. If the Procedure Performed QDM data element, CARDIAC SURGERY, starts before end of Occurrence A of \$CADEncounters145 (Encounter Performed QDM data element, OFFICE VISIT, or QDM data element OUTPATIENT CONSULTATION, or NURSING FACILITY VISIT, or CARE SERVICES IN LONG-TERM RESIDENTIAL FACILITY, or FACE-TO-FACE INTERACTION during measurement period) equals Yes, include in Initial Population 1 and proceed to check Denominator 1.
6. Start Denominator 1
  - a. Denominator equals the Initial Population.
7. Check Diagnostic Study Performed:
  - a. If the Diagnostic Study Performed QDM data element, EJECTION FRACTION (result less than 40%), starts before end of Occurrence A of \$CADEncounters145 (Encounter Performed QDM data element, OFFICE VISIT, or QDM data element OUTPATIENT CONSULTATION, or NURSING FACILITY VISIT, or CARE SERVICES IN LONG-TERM RESIDENTIAL FACILITY, or FACE-TO-FACE INTERACTION during measurement period) equals No, proceed to Diagnostic Active.
  - b. If the Diagnostic Study Performed QDM data element, EJECTION FRACTION (result less than 40%), starts before end of Occurrence A of \$CADEncounters145 (Encounter Performed QDM data element, OFFICE VISIT, or QDM data element OUTPATIENT CONSULTATION, or NURSING FACILITY VISIT, or CARE SERVICES IN LONG-TERM RESIDENTIAL FACILITY, or FACE-TO-FACE INTERACTION during measurement period) equals Yes, include in Eligible Population Count, which is represented by Letter b in the sample calculation listed at the end of this document. Letter b equals 8 patients in the Eligible Population.
8. Check Diagnosis Active:
  - a. If the Diagnosis Active QDM data element, MODERATE OR SEVERE LVSD, starts before end of Occurrence A of \$CADEncounters145 (Encounter Performed QDM data element, OFFICE VISIT, or QDM data element OUTPATIENT CONSULTATION, or NURSING FACILITY VISIT, or CARE SERVICES IN LONG-TERM RESIDENTIAL FACILITY, or FACE-TO-FACE INTERACTION during measurement period) equals No, proceed to check next Diagnosis Active.
  - b. If the Diagnosis Active QDM data element, MODERATE OR SEVERE LVSD, starts before end of Occurrence A of \$CADEncounters145 (Encounter Performed QDM data element, OFFICE VISIT, or QDM data element OUTPATIENT CONSULTATION, or NURSING FACILITY VISIT, or CARE SERVICES IN LONG-TERM RESIDENTIAL FACILITY, or FACE-TO-FACE INTERACTION during measurement period) equals Yes, include in Eligible Population Count, which is



represented by Letter b in the sample calculation listed at the end of this document. Letter b equals 8 patients in the Eligible Population.

9. Check Diagnosis Active:

- a. If the Diagnosis Active QDM data element, LEFT VENTRICULAR SYSTOLIC DYSFUNCTION (severity: moderate or severe), starts before end of Occurrence A of \$CADEncounters145 (Encounter Performed QDM data element, OFFICE VISIT, or QDM data element OUTPATIENT CONSULTATION, or NURSING FACILITY VISIT, or CARE SERVICES IN LONG-TERM RESIDENTIAL FACILITY, or FACE-TO-FACE INTERACTION during measurement period) equals No, do not include in the Initial Population. Stop Processing.
- b. If the Diagnosis Active QDM data element, LEFT VENTRICULAR SYSTOLIC DYSFUNCTION (severity: moderate or severe), starts before end of Occurrence A of \$CADEncounters145 (Encounter Performed QDM data element, OFFICE VISIT, or QDM data element OUTPATIENT CONSULTATION, or NURSING FACILITY VISIT, or CARE SERVICES IN LONG-TERM RESIDENTIAL FACILITY, or FACE-TO-FACE INTERACTION during measurement period) equals Yes, include in Eligible Population Count, which is represented by Letter b in the sample calculation listed at the end of this document. Letter b equals 8 patients in the Eligible Population.

10. Start Numerator 1

11. Check Medication Order:

- a. If the Medication Order QDM data element, BETA BLOCKER THERAPY FOR LVSD, during Occurrence A of \$CADEncounters145 (Encounter Performed QDM data element, OFFICE VISIT, or QDM data element OUTPATIENT CONSULTATION, or NURSING FACILITY VISIT, or CARE SERVICES IN LONG-TERM RESIDENTIAL FACILITY, or FACE-TO-FACE INTERACTION during measurement period) equals No, proceed to Medication Active.
- b. If the Medication Order QDM data element, BETA BLOCKER THERAPY FOR LVSD, during Occurrence A of \$CADEncounters145 (Encounter Performed QDM data element, OFFICE VISIT, or QDM data element OUTPATIENT CONSULTATION, or NURSING FACILITY VISIT, or CARE SERVICES IN LONG-TERM RESIDENTIAL FACILITY, or FACE-TO-FACE INTERACTION during measurement period) equals Yes, include in Numerator Count 1, which is represented by Letter a in the sample calculation listed at the end of this document. Letter a equals 5 patients in the Numerator Count. Stop Processing.

12. Check Medication Active:

- a. If the Medication Active QDM data element, BETA BLOCKER THERAPY FOR LVSD, overlaps Occurrence A of \$CADEncounters145 (Encounter Performed QDM data element, OFFICE VISIT, or QDM data element OUTPATIENT CONSULTATION, or NURSING FACILITY VISIT, or CARE SERVICES IN LONG-TERM RESIDENTIAL FACILITY, or FACE-TO-FACE INTERACTION during measurement period) equals No, proceed to check Denominator Exceptions.
- b. If the Medication Active QDM data element, BETA BLOCKER THERAPY FOR LVSD, overlaps Occurrence A of \$CADEncounters145 (Encounter Performed QDM

data element, OFFICE VISIT, or QDM data element OUTPATIENT CONSULTATION, or NURSING FACILITY VISIT, or CARE SERVICES IN LONG-TERM RESIDENTIAL FACILITY, or FACE-TO-FACE INTERACTION during measurement period) equals Yes, include in Numerator Count 1, which is represented by Letter a in the sample calculation listed at the end of this document. Letter a equals 5 patients in the Numerator Count. Stop Processing.

13. Check Denominator Exceptions 1

14. Check Most Recent Occurrence B Physical Exam Performed:

- a. If Most Recent Occurrence B of Physical Exam Performed QDM data element, HEART RATE, starts before start of Occurrence A of QDM data element, HEART RATE equals Yes, proceed to check Occurrence A of Physical Exam Performed.
- b. If Most Recent Occurrence B of Physical Exam Performed QDM data element, HEART RATE, starts before start of Occurrence A of QDM data element, HEART RATE equals No, proceed to check Medication Order Not Done.

15. Check Occurrence A of Physical Exam Performed:

- a. If Occurrence A of Physical Exam Performed QDM data element, HEART RATE (result less than 50 bpm), during Occurrence A of \$CADEncounters145 (Encounter Performed QDM data element, OFFICE VISIT, or QDM data element OUTPATIENT CONSULTATION, or NURSING FACILITY VISIT, or CARE SERVICES IN LONG-TERM RESIDENTIAL FACILITY, or FACE-TO-FACE INTERACTION during measurement period), AND Occurrence B of QDM data element, HEART RATE (result less than 50 bpm) during Occurrence A of \$CADEncounters145 (Encounter Performed QDM data element, OFFICE VISIT, or QDM data element OUTPATIENT CONSULTATION, or NURSING FACILITY VISIT, or CARE SERVICES IN LONG-TERM RESIDENTIAL FACILITY, or FACE-TO-FACE INTERACTION during measurement period) equals Yes, include in Denominator Exception 1 Count, which is represented by Letter c<sup>1</sup> in the sample calculation listed at the end of this document. Letter c<sup>1</sup> equals 1 patient. Stop Processing.
- b. If Occurrence A of Physical Exam Performed QDM data element, HEART RATE (result less than 50 bpm), during Occurrence A of \$CADEncounters145 (Encounter Performed QDM data element, OFFICE VISIT, or QDM data element OUTPATIENT CONSULTATION, or NURSING FACILITY VISIT, or CARE SERVICES IN LONG-TERM RESIDENTIAL FACILITY, or FACE-TO-FACE INTERACTION during measurement period), AND Occurrence B of QDM data element, HEART RATE (result less than 50 bpm) during Occurrence A of \$CADEncounters145 (Encounter Performed QDM data element, OFFICE VISIT, or QDM data element OUTPATIENT CONSULTATION, or NURSING FACILITY VISIT, or CARE SERVICES IN LONG-TERM RESIDENTIAL FACILITY, or FACE-TO-FACE INTERACTION during measurement period) equals No, proceed to check next Physical Exam Finding.

16. Check Medication Order Not Done:

- a. If the Medication Order Not Done QDM data element, MEDICAL REASON, or QDM data element, PATIENT REASON, or QDM data element, SYSTEM REASON for Beta-Blocker Therapy Ingredient starts during Occurrence A of \$CADEncounters145

(Encounter Performed QDM data element, OFFICE VISIT, or QDM data element OUTPATIENT CONSULTATION, or NURSING FACILITY VISIT, or CARE SERVICES IN LONG-TERM RESIDENTIAL FACILITY, or FACE-TO-FACE INTERACTION during measurement period) equals Yes, include in Denominator Exception Count 1, which is represented by Letter  $c^2$  in the sample calculation listed at the end of this document. Letter  $c^2$  equals 1 patient. Stop Processing.

- b. If the Medication Order Not Done QDM data element, MEDICAL REASON, or QDM data element, PATIENT REASON, or QDM data element, SYSTEM REASON for Beta-Blocker Therapy Ingredient starts during Occurrence A of \$CADEncounters145 (Encounter Performed QDM data element, OFFICE VISIT, or QDM data element OUTPATIENT CONSULTATION, or NURSING FACILITY VISIT, or CARE SERVICES IN LONG-TERM RESIDENTIAL FACILITY, or FACE-TO-FACE INTERACTION during measurement period) equals No, proceed to check Diagnosis Active.

17. Check Diagnosis Active:

- a. If the Diagnosis Active QDM data element, ARRHYTHMIA, or QDM data element, HYPOTENSION, or QDM data element, ASTHMA, or QDM data element, ALLERGY TO BETA BLOCKER THERAPY, or QDM data element, INTOLERANCE TO BETA BLOCKER THERAPY, or QDM data element, BRADYCARDIA, overlaps \$CADEncounters145 (Encounter Performed QDM data element, OFFICE VISIT, or QDM data element OUTPATIENT CONSULTATION, or NURSING FACILITY VISIT, or CARE SERVICES IN LONG-TERM RESIDENTIAL FACILITY, or FACE-TO-FACE INTERACTION during measurement period) equals Yes, include in Denominator Exception Count 1, which is represented by Letter  $c^2$  in the sample calculation listed at the end of this document. Letter  $c^2$  equals 1 patient. Stop Processing.
- b. If the Diagnosis Active QDM data element, ARRHYTHMIA, or QDM data element, HYPOTENSION, or QDM data element, ASTHMA, or QDM data element, ALLERGY TO BETA BLOCKER THERAPY, or QDM data element, INTOLERANCE TO BETA BLOCKER THERAPY, or QDM data element, BRADYCARDIA, overlaps \$CADEncounters145 (Encounter Performed QDM data element, OFFICE VISIT, or QDM data element OUTPATIENT CONSULTATION, or NURSING FACILITY VISIT, or CARE SERVICES IN LONG-TERM RESIDENTIAL FACILITY, or FACE-TO-FACE INTERACTION during measurement period) equals No, proceed to check Medication Allergy.

18. Check Medication Allergy:

- a. If Medication Allergy QDM data element, BETA BLOCKER THERAPY INGREDIENT, overlaps Occurrence A of \$CADEncounters145 (Encounter Performed QDM data element, OFFICE VISIT, or QDM data element OUTPATIENT CONSULTATION, or NURSING FACILITY VISIT, or CARE SERVICES IN LONG-TERM RESIDENTIAL FACILITY, or FACE-TO-FACE INTERACTION during measurement period) equals Yes, include in Denominator Exception Count 1, which is represented by Letter  $c^3$  in the sample calculation listed at the end of this document. Letter  $c^3$  equals 0 patients. Stop Processing.

- b. If Medication Allergy QDM data element, BETA BLOCKER THERAPY INGREDIENT, overlaps Occurrence A of \$CADEncounters145 (Encounter Performed QDM data element, OFFICE VISIT, or QDM data element OUTPATIENT CONSULTATION, or NURSING FACILITY VISIT, or CARE SERVICES IN LONG-TERM RESIDENTIAL FACILITY, or FACE-TO-FACE INTERACTION during measurement period) equals No, proceed to check Medication Intolerance.

19. Check Medication Intolerance:

- a. If the Medication Intolerance QDM data element, BETA BLOCKER THERAPY, overlaps Occurrence A of \$CADEncounters145 (Encounter Performed QDM data element, OFFICE VISIT, or QDM data element OUTPATIENT CONSULTATION, or NURSING FACILITY VISIT, or CARE SERVICES IN LONG-TERM RESIDENTIAL FACILITY, or FACE-TO-FACE INTERACTION during measurement period) equals Yes, include in Denominator Exception Count 1, which is represented by Letter c<sup>3</sup> in the sample calculation listed at the end of this document. Letter c<sup>3</sup> equals 0 patients. Stop Processing.
- b. If the Medication Intolerance QDM data element, BETA BLOCKER THERAPY, overlaps Occurrence A of \$CADEncounters145 (Encounter Performed QDM data element, OFFICE VISIT, or QDM data element OUTPATIENT CONSULTATION, or NURSING FACILITY VISIT, or CARE SERVICES IN LONG-TERM RESIDENTIAL FACILITY, or FACE-TO-FACE INTERACTION during measurement period) equals No, proceed to check Diagnosis Active.

20. Check Diagnosis Active:

- a. If the Diagnosis Active QDM data element, ATRIOVENTRICULAR BLOCK, overlaps Occurrence A of \$CADEncounters145 (Encounter Performed QDM data element, OFFICE VISIT, or QDM data element OUTPATIENT CONSULTATION, or NURSING FACILITY VISIT, or CARE SERVICES IN LONG-TERM RESIDENTIAL FACILITY, or FACE-TO-FACE INTERACTION during measurement period), AND NOT Diagnosis Active QDM data element, CARDIAC PACER IN SITU, AND NOT Device Applied QDM data element, CARDIAC PACER, starts before end of Occurrence A of \$CADEncounters145 (Encounter Performed QDM data element, OFFICE VISIT, or QDM data element OUTPATIENT CONSULTATION, or NURSING FACILITY VISIT, or CARE SERVICES IN LONG-TERM RESIDENTIAL FACILITY, or FACE-TO-FACE INTERACTION during measurement period) equals Yes, include in Denominator Exception Count 1, which is represented by Letter c<sup>3</sup> in the sample calculation listed at the end of this document. Letter c<sup>3</sup> equals 0 patients. Stop Processing.
- b. If the Diagnosis Active QDM data element, ATRIOVENTRICULAR BLOCK, overlaps Occurrence A of \$CADEncounters145 (Encounter Performed QDM data element, OFFICE VISIT, or QDM data element OUTPATIENT CONSULTATION, or NURSING FACILITY VISIT, or CARE SERVICES IN LONG-TERM RESIDENTIAL FACILITY, or FACE-TO-FACE INTERACTION during measurement period), AND NOT Diagnosis Active QDM data element, CARDIAC PACER IN SITU, AND NOT Device Applied QDM data element, CARDIAC PACER, starts before end of Occurrence A of \$CADEncounters145 (Encounter Performed QDM data element, OFFICE VISIT, or QDM data element OUTPATIENT CONSULTATION, or NURSING FACILITY VISIT,

or CARE SERVICES IN LONG-TERM RESIDENTIAL FACILITY, or FACE-TO-FACE INTERACTION during measurement period) equals No, include in the No/Missing Data Submitted Count.

**SAMPLE CALCULATION: Population Criteria 1**

**Performance Rate=**

$$\frac{\text{Numerator (a= 5 patients)}}{\text{Denominator (b=8 patients) - Denominator Exclusions (N/A) - Denominator Exceptions (c<sup>1</sup> + c<sup>2</sup> + c<sup>3</sup> = 2 patients)}} = 83.33\%$$

1. Start Initial Population
2. Check Age:
  - a. If the AGE greater than or equal to 18 years at measurement period equals No, do not include in Initial Population. Stop Processing.
  - b. If the AGE greater than or equal to 18 years at measurement period equals Yes, proceed to check Encounter Performed.
3. Check Encounter Performed: Total number of encounters must be greater than or equal to 2:
  - a. If the Encounter Performed QDM data element, OFFICE VISIT, or OUTPATIENT CONSULTATION, or NURSING FACILITY VISIT, or CARE SERVICES IN LONG-TERM RESIDENTIAL FACILITY, or HOME HEALTHCARE SERVICES, or PATIENT PROVIDER INTERACTION during the measurement period equals Yes, check for another Encounter Performed until total number of encounters are greater than or equal to 2. If the count is greater than or equal to 2, include in Initial Population.
  - b. If the Encounter Performed QDM data element, OFFICE VISIT, or OUTPATIENT CONSULTATION, or NURSING FACILITY VISIT, or CARE SERVICES IN LONG-TERM RESIDENTIAL FACILITY, or HOME HEALTHCARE SERVICES, or PATIENT PROVIDER INTERACTION during the measurement period equals No, proceed to check next Diagnosis Active.
4. Check Diagnosis Active:
  - a. If the Diagnosis Active QDM data element, CORONARY ARTERY DISEASE NO MI overlaps Occurrence A of \$CADEncounters145 (Encounter Performed QDM data element, OFFICE VISIT, or QDM data element OUTPATIENT CONSULTATION, or NURSING FACILITY VISIT, or CARE SERVICES IN LONG-TERM RESIDENTIAL FACILITY, or FACE-TO-FACE INTERACTION during measurement period) equals No, proceed to check Procedure Performed.
  - b. If the Diagnosis Active QDM data element, CORONARY ARTERY DISEASE NO MI overlaps Occurrence A of \$CADEncounters145 (Encounter Performed QDM data element, OFFICE VISIT, or QDM data element OUTPATIENT CONSULTATION, or NURSING FACILITY VISIT, or CARE SERVICES IN LONG-TERM RESIDENTIAL FACILITY, or FACE-TO-FACE INTERACTION during measurement period) equals Yes, include in Initial Population 2 and proceed to check Denominator 2.
5. Check Procedure Performed:
  - a. If the Procedure Performed QDM data element, CARDIAC SURGERY, starts before end of Occurrence A of \$CADEncounters145 (Encounter Performed QDM data element, OFFICE VISIT, or QDM data element OUTPATIENT CONSULTATION, or NURSING FACILITY VISIT, or CARE SERVICES IN LONG-TERM RESIDENTIAL FACILITY, or FACE-TO-FACE INTERACTION during measurement period) equals No, do not include in the Initial Population 2. Stop Processing.
  - b. If the Procedure Performed QDM data element, CARDIAC SURGERY, starts before end of Occurrence A of \$CADEncounters145 (Encounter Performed QDM data element, OFFICE VISIT, or QDM data element OUTPATIENT CONSULTATION, or

NURSING FACILITY VISIT, or CARE SERVICES IN LONG-TERM RESIDENTIAL FACILITY, or FACE-TO-FACE INTERACTION during measurement period) equals Yes, include in Initial Population 2 and proceed to check Denominator 2.

6. Start Denominator 2

- a. Denominator equals the Initial Population.

7. Check Diagnosis Resolved:

- a. If the Diagnosis Resolved QDM data element, MYOCARDIAL INFARCTION, less than or equal to 3 years starts before end of Occurrence A of \$CADEncounters145 (Encounter Performed QDM data element, OFFICE VISIT, or QDM data element OUTPATIENT CONSULTATION, or NURSING FACILITY VISIT, or CARE SERVICES IN LONG-TERM RESIDENTIAL FACILITY, or FACE-TO-FACE INTERACTION during measurement period) equals No, do not include in Initial Population. Stop Processing.
- b. If the Diagnosis Resolved QDM data element, MYOCARDIAL INFARCTION, less than or equal to 3 years starts before end of Occurrence A of \$CADEncounters145 (Encounter Performed QDM data element, OFFICE VISIT, or QDM data element OUTPATIENT CONSULTATION, or NURSING FACILITY VISIT, or CARE SERVICES IN LONG-TERM RESIDENTIAL FACILITY, or FACE-TO-FACE INTERACTION during measurement period) equals Yes, include in Eligible Population Count, which is represented by Letter b in the sample calculation listed at the end of this document. Letter b equals 8 patients. Continue on to the Numerator 2.

8. Start Numerator 2

9. Check Medication Order:

- a. If the Medication Order QDM data element, BETA BLOCKER THERAPY, during Occurrence A of \$CADEncounters145 (Encounter Performed QDM data element, OFFICE VISIT, or QDM data element OUTPATIENT CONSULTATION, or NURSING FACILITY VISIT, or CARE SERVICES IN LONG-TERM RESIDENTIAL FACILITY, or FACE-TO-FACE INTERACTION during measurement period) equals No, proceed to Medication Active.
- b. If the Medication Order QDM data element, BETA BLOCKER THERAPY, during Occurrence A of \$CADEncounters145 (Encounter Performed QDM data element, OFFICE VISIT, or QDM data element OUTPATIENT CONSULTATION, or NURSING FACILITY VISIT, or CARE SERVICES IN LONG-TERM RESIDENTIAL FACILITY, or FACE-TO-FACE INTERACTION during measurement period) equals Yes, include in Numerator Count 2, which is represented by Letter a in the sample calculation listed at the end of this document. Letter a equals 5 patients. Stop Processing.

10. Check Medication Active:

- a. If the Medication Active QDM data element, BETA BLOCKER THERAPY, overlaps Occurrence A of \$CADEncounters145 (Encounter Performed QDM data element, OFFICE VISIT, or QDM data element OUTPATIENT CONSULTATION, or NURSING FACILITY VISIT, or CARE SERVICES IN LONG-TERM RESIDENTIAL FACILITY, or

FACE-TO-FACE INTERACTION during measurement period) equals No, proceed to check Denominator Exceptions.

- b. If the Medication Active QDM data element, BETA BLOCKER THERAPY, overlaps Occurrence A of \$CADEncounters145 (Encounter Performed QDM data element, OFFICE VISIT, or QDM data element OUTPATIENT CONSULTATION, or NURSING FACILITY VISIT, or CARE SERVICES IN LONG-TERM RESIDENTIAL FACILITY, or FACE-TO-FACE INTERACTION during measurement period) equals Yes, include in Numerator Count 2, which is represented by Letter a in the sample calculation listed at the end of this document. Letter a equals 5 patients. Stop Processing.

11. Check Denominator Exceptions 2

12. Check Most Recent Occurrence B of Physical Exam Performed:

- a. If Most Recent Occurrence B of Physical Exam Performed QDM data element, HEART RATE, starts before start of Occurrence A of Physical Exam Performed QDM data element, HEART RATE equals Yes, proceed to check Occurrence A of Physical Exam Performed.
- b. If Most Recent Occurrence B of Physical Exam Performed QDM data element, HEART RATE, starts before start of Occurrence A of Physical Exam Performed QDM data element, HEART RATE equals No, proceed to check Medication Order Not Done.

13. Check Occurrence A of Physical Exam Performed:

- a. If Occurrence A of Physical Exam Performed QDM data element, HEART RATE (result less than 50 bpm), during Occurrence A of \$CADEncounters145 (Encounter Performed QDM data element, OFFICE VISIT, or QDM data element OUTPATIENT CONSULTATION, or NURSING FACILITY VISIT, or CARE SERVICES IN LONG-TERM RESIDENTIAL FACILITY, or FACE-TO-FACE INTERACTION during measurement period), and Occurrence B of Physical Exam Performed QDM data element, HEART RATE (result less than 50 bpm) during Occurrence A of \$CADEncounters145 (Encounter Performed QDM data element, OFFICE VISIT, or QDM data element OUTPATIENT CONSULTATION, or NURSING FACILITY VISIT, or CARE SERVICES IN LONG-TERM RESIDENTIAL FACILITY, or FACE-TO-FACE INTERACTION during measurement period) equals Yes, include in Denominator Exception Count 2, which is represented by Letter c<sup>1</sup> in the sample calculation listed at the end of this document. Letter c<sup>1</sup> equals 1 patient. Stop Processing.
- b. If Occurrence A of Physical Exam Performed QDM data element, HEART RATE (result less than 50 bpm), during Occurrence A of \$CADEncounters145 (Encounter Performed QDM data element, OFFICE VISIT, or QDM data element OUTPATIENT CONSULTATION, or NURSING FACILITY VISIT, or CARE SERVICES IN LONG-TERM RESIDENTIAL FACILITY, or FACE-TO-FACE INTERACTION during measurement period), and Occurrence B of Physical Exam Performed QDM data element, HEART RATE (result less than 50 bpm) during Occurrence A of \$CADEncounters145 (Encounter Performed QDM data element, OFFICE VISIT, or QDM data element OUTPATIENT CONSULTATION, or NURSING FACILITY VISIT, or CARE SERVICES IN LONG-TERM RESIDENTIAL FACILITY, or FACE-TO-FACE



INTERACTION during measurement period) equals No, proceed to check Medication Order Not Done.

14. Check Medication Order Not Done:

- a. If the Medication Order Not Done QDM data element, MEDICAL REASON, or QDM data element, PATIENT REASON, or QDM data element, SYSTEM REASON for Beta-Blocker Therapy Ingredient starts during Occurrence A of \$CADEncounters145 (Encounter Performed QDM data element, OFFICE VISIT, or QDM data element OUTPATIENT CONSULTATION, or NURSING FACILITY VISIT, or CARE SERVICES IN LONG-TERM RESIDENTIAL FACILITY, or FACE-TO-FACE INTERACTION during measurement period) equals Yes, include in Denominator Exception Count 2, which is represented by Letter c<sup>2</sup> in the sample calculation listed at the end of this document. Letter c<sup>2</sup> equals 1 patient. Stop Processing.
- b. If the Medication Order Not Done QDM data element, MEDICAL REASON, or QDM data element, PATIENT REASON, or QDM data element, SYSTEM REASON for Beta-Blocker Therapy Ingredient starts during Occurrence A of \$CADEncounters145 (Encounter Performed QDM data element, OFFICE VISIT, or QDM data element OUTPATIENT CONSULTATION, or NURSING FACILITY VISIT, or CARE SERVICES IN LONG-TERM RESIDENTIAL FACILITY, or FACE-TO-FACE INTERACTION during measurement period) equals No, proceed to check Diagnosis Active.

15. Check Diagnosis Active:

- a. If the Diagnosis Active QDM data element, ARRYTHMIA, or QDM data element, HYPOTENSION, or QDM data element, ASTHMA, or QDM data element, ALLERGY TO BETA BLOCKER THERAPY, or QDM data element, INTOLERANCE TO BETA BLOCKER THERAPY, or QDM data element, BRADYCARDIA, overlaps Occurrence A of \$CADEncounters145 (Encounter Performed QDM data element, OFFICE VISIT, or QDM data element OUTPATIENT CONSULTATION, or NURSING FACILITY VISIT, or CARE SERVICES IN LONG-TERM RESIDENTIAL FACILITY, or FACE-TO-FACE INTERACTION during measurement period) equals Yes, include in Denominator Exception Count 2, which is represented by Letter c<sup>2</sup> in the sample calculation listed at the end of this document. Letter c<sup>2</sup> equals 1 patient. Stop Processing.
- b. If the Diagnosis Active QDM data element, ARRYTHMIA, or QDM data element, HYPOTENSION, or QDM data element, ASTHMA, or QDM data element, ALLERGY TO BETA BLOCKER THERAPY, or QDM data element, INTOLERANCE TO BETA BLOCKER THERAPY, or QDM data element, BRADYCARDIA, overlaps Occurrence A of \$CADEncounters145 (Encounter Performed QDM data element, OFFICE VISIT, or QDM data element OUTPATIENT CONSULTATION, or NURSING FACILITY VISIT, or CARE SERVICES IN LONG-TERM RESIDENTIAL FACILITY, or FACE-TO-FACE INTERACTION during measurement period) equals No, proceed to check Medication Allergy.

16. Check Medication Allergy:

- a. If the Medication Allergy QDM data element, BETA BLOCKER THERAPY INGREDIENT, overlaps Occurrence A of \$CADEncounters145 (Encounter Performed QDM data element, OFFICE VISIT, or QDM data element OUTPATIENT CONSULTATION, or NURSING FACILITY VISIT, or CARE SERVICES IN LONG-TERM RESIDENTIAL FACILITY, or FACE-TO-FACE INTERACTION during measurement period) equals Yes, include in Denominator Exception Count 2, which is represented by Letter c<sup>3</sup> in the sample calculation listed at the end of this document. Letter c<sup>3</sup> equals 0 patients. Stop Processing.
- b. If the Medication Allergy QDM data element, BETA BLOCKER THERAPY INGREDIENT, overlaps Occurrence A of \$CADEncounters145 (Encounter Performed QDM data element, OFFICE VISIT, or QDM data element OUTPATIENT CONSULTATION, or NURSING FACILITY VISIT, or CARE SERVICES IN LONG-TERM RESIDENTIAL FACILITY, or FACE-TO-FACE INTERACTION during measurement period) equals No, proceed to check Medication Intolerance.

17. Check Medication Intolerance:

- a. If the Medication Intolerance QDM data element, BETA BLOCKER THERAPY, overlaps Occurrence A of \$CADEncounters145 (Encounter Performed QDM data element, OFFICE VISIT, or QDM data element OUTPATIENT CONSULTATION, or NURSING FACILITY VISIT, or CARE SERVICES IN LONG-TERM RESIDENTIAL FACILITY, or FACE-TO-FACE INTERACTION during measurement period) equals Yes, include in Denominator Exception Count 2, which is represented by letter c<sup>3</sup> in the sample calculation listed at the end of this document. Letter c<sup>3</sup> equals 0 patients. Stop Processing.
- b. If the Medication Intolerance QDM data element, BETA BLOCKER THERAPY, overlaps Occurrence A of \$CADEncounters145 (Encounter Performed QDM data element, OFFICE VISIT, or QDM data element OUTPATIENT CONSULTATION, or NURSING FACILITY VISIT, or CARE SERVICES IN LONG-TERM RESIDENTIAL FACILITY, or FACE-TO-FACE INTERACTION during measurement period) equals No, proceed to check Diagnosis Active.

18. Check Diagnosis Active:

- a. If the Diagnosis Active QDM data element, ATRIOVENTRICULAR BLOCK, overlaps Occurrence A of \$CADEncounters145 (Encounter Performed QDM data element, OFFICE VISIT, or QDM data element OUTPATIENT CONSULTATION, or NURSING FACILITY VISIT, or CARE SERVICES IN LONG-TERM RESIDENTIAL FACILITY, or FACE-TO-FACE INTERACTION during measurement period), AND NOT Diagnosis Active QDM data element, CARDIAC PACER IN SITU, AND NOT Device Applied QDM data element, CARDIAC PACER, starts before end of Occurrence A of \$CADEncounters145 (Encounter Performed QDM data element, OFFICE VISIT, or QDM data element OUTPATIENT CONSULTATION, or NURSING FACILITY VISIT, or CARE SERVICES IN LONG-TERM RESIDENTIAL FACILITY, or FACE-TO-FACE INTERACTION during measurement period) equals Yes, include in Denominator Exception Count 2, which is represented by Letter c<sup>3</sup> in the sample calculation listed at the end of this document. Letter c<sup>3</sup> equals 0 patients. Stop Processing.

- b. If the Diagnosis Active QDM data element, ATRIOVENTRICULAR BLOCK, overlaps Occurrence A of \$CADEncounters145 (Encounter Performed QDM data element, OFFICE VISIT, or QDM data element OUTPATIENT CONSULTATION, or NURSING FACILITY VISIT, or CARE SERVICES IN LONG-TERM RESIDENTIAL FACILITY, or FACE-TO-FACE INTERACTION during measurement period), AND NOT Diagnosis Active QDM data element, CARDIAC PACER IN SITU, AND NOT Device Applied QDM data element, CARDIAC PACER, starts before end of Occurrence A of \$CADEncounters145 (Encounter Performed QDM data element, OFFICE VISIT, or QDM data element OUTPATIENT CONSULTATION, or NURSING FACILITY VISIT, or CARE SERVICES IN LONG-TERM RESIDENTIAL FACILITY, or FACE-TO-FACE INTERACTION during measurement period) equals No, include in the No/Missing Data Submitted Count.

**SAMPLE CALCULATION: Population Criteria 1**

**Performance Rate=**

$$\frac{\text{Numerator (a= 5 patients)}}{\text{Denominator (b=8 patients) - Denominator Exclusions (N/A) - Denominator Exceptions (c}^1\text{ + c}^2\text{ + c}^3\text{ = 2 patients)}} = 83.33\%$$