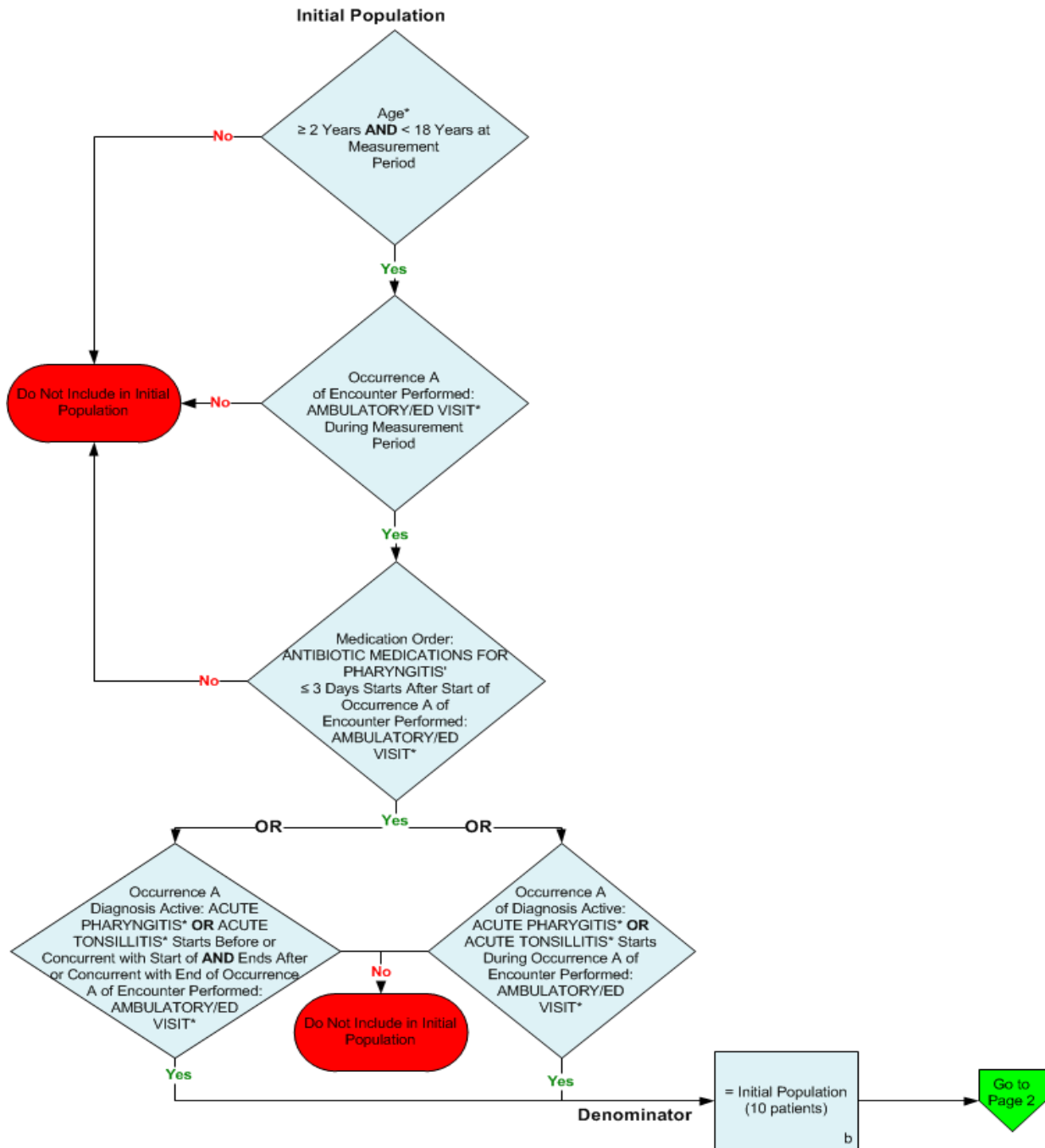
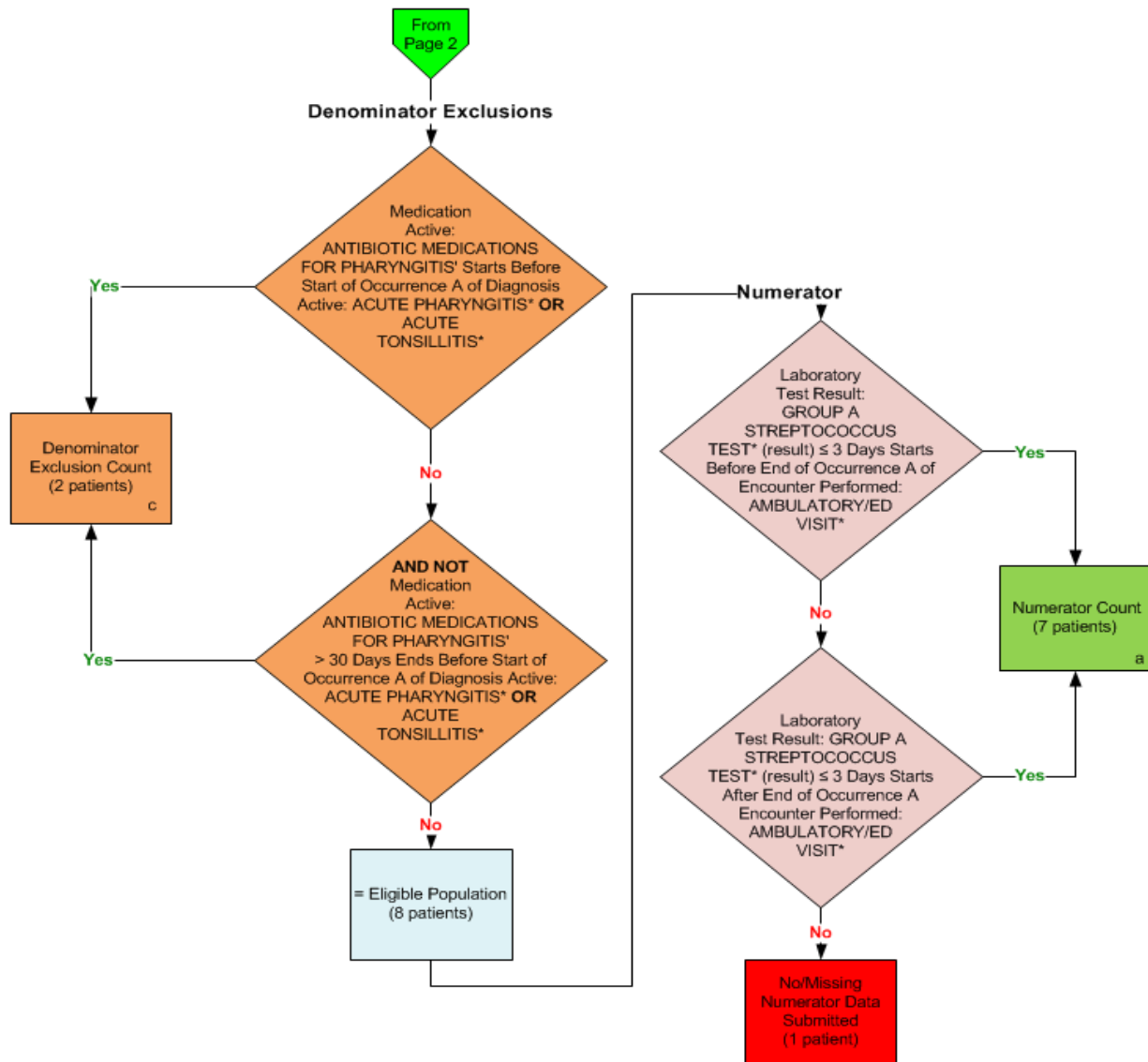


**2014 eCQM Flow**  
**Measure Identifier: CMS146v4**  
 NQF 0002: Appropriate Testing for Children with Pharyngitis



\*Please refer to the specific section of the eCQM to identify the QDM data elements and associated value sets for use in reporting this eCQM.

**2014 eCQM Flow**  
**Measure Identifier: CMS146v4**  
 NQF 0002: Appropriate Testing for Children with Pharyngitis



\*Please refer to the specific section of the eCQM to identify the QDM data elements and associated value sets for use in reporting this eCQM.

**SAMPLE CALCULATION:**

**Performance Rate =**  

$$\frac{\text{Numerator (a=7 patients)}}{\text{Denominator (b=10 patients) - Denominator Exclusions (c=2 patients) - Denominator Exceptions (N/A)}} = 87.50\%$$

2014 eCQM Flows  
Measure Identifier: CMS146v4  
NQF 0002: Appropriate Testing for Children with Pharyngitis

Please refer to the specific section of the eCQM to identify the Population Criteria and associated value sets for use in reporting this eCQM.

1. Start Initial Population
2. Check Age:
  - a. If the AGE is greater than or equal to 2 years AND less than 18 years of age at measurement period equals No, do not include in Initial Population and stop processing.
  - b. If the AGE is greater than or equal to 2 years AND less than 18 years of age at measurement period equals Yes, continue processing and proceed to check Encounter Performed.
3. Check Occurrence A Encounter Performed:
  - a. If the Occurrence A Encounter Performed QDM data element, AMBULATORY/ED VISIT, during measurement period equals Yes, proceed to check Medication Order.
  - b. If the Occurrence A Encounter Performed QDM data element, AMBULATORY/ED VISIT, during measurement period equals No, do not include in Initial Population and stop processing.
4. Check Medication Order:
  - a. If the Medication Order QDM data element, ANTIBIOTIC MEDICATIONS FOR PHARYNGITIS, less than or equal to 3 days starts after start of Occurrence A of QDM data element, AMBULATORY/ED VISIT, equals Yes, proceed to check Diagnosis Active.
  - b. If the Medication Order QDM data element, ANTIBIOTIC MEDICATIONS FOR PHARYNGITIS, less than or equal to 3 days starts after start of Occurrence A of QDM data element, AMBULATORY/ED VISIT, equals No, do not include in Initial Population and stop processing.
5. Check Occurrence A Diagnosis Active:
  - a. If the Occurrence A Diagnosis Active QDM data element, ACUTE PHARYNGITIS OR QDM data element ACUTE TONSILLITIS starts before or concurrent with start of AND ends after or concurrent with end of Occurrence A of Encounter Performed: AMBULATORY/ED, equals Yes, include in initial population and continue on to the Denominator.
  - b. If the Occurrence A Diagnosis Active QDM data element, ACUTE PHARYNGITIS OR QDM data element ACUTE TONSILLITIS starts before or concurrent with start of AND ends after or concurrent with end of Occurrence A of Encounter Performed: AMBULATORY/ED, equals No, proceed to check Diagnosis Active.
6. Check Occurrence A Diagnosis Active:

- a. If the Occurrence A Diagnosis Active QDM data element, ACUTE PHARYNGITIS OR QDM data element ACUTE TONSILLITIS starts during Occurrence A of Encounter Performed AMBULATORY/ED VISIT equals Yes, include in initial population and continue on to the Denominator.
  - b. If the Occurrence A Diagnosis Active QDM data element, ACUTE PHARYNGITIS OR QDM data element ACUTE TONSILLITIS starts during Occurrence A of Encounter Performed AMBULATORY/ED VISIT equals No, do not include in Initial Population and stop processing.
7. Start Denominator
  - a. Denominator equals the Initial Population. Denominator is represented by the Letter b in the sample calculation listed at the end of this document. Letter b equals 10 patients in the sample calculation.
8. Start Denominator Exclusions
9. Check Medication Active:
  - a. If the Medication Active QDM data element, ANTIBIOTIC MEDICATIONS FOR PHARYNGITIS, starts before start of Occurrence A of QDM data element Diagnosis Active, ACUTE PHARYNGITIS OR QDM data element ACUTE TONSILLITIS, equals Yes, include in Denominator Exclusion count. Denominator Exclusion is represented by the Letter c in the sample calculation listed at the end of this document. Letter c equals 2 patients in the sample calculation.
  - b. If the Medication Active QDM data element, ANTIBIOTIC MEDICATIONS FOR PHARYNGITIS, starts before start of Occurrence A of QDM data element Diagnosis Active, ACUTE PHARYNGITIS OR QDM data element ACUTE TONSILLITIS, equals No, proceed to next Medication Active.
10. Check Medication Active:
  - a. If AND NOT Medication Active QDM data element, ANTIBIOTIC MEDICATIONS FOR PHARYNGITIS, greater than 30 days ends before start of Occurrence A of Diagnosis Active QDM data element, ACUTE PHARYNGITIS OR ACUTE TONSILLITIS, equals Yes, include in Denominator Exclusion count. Denominator Exclusion is represented by the Letter c in the sample calculation listed at the end of this document. Letter c equals 2 patients in the sample calculation.
  - b. If AND NOT Medication Active QDM data element, ANTIBIOTIC MEDICATIONS FOR PHARYNGITIS, greater than 30 days ends before start of Occurrence A of Diagnosis Active QDM data element, ACUTE PHARYNGITIS OR ACUTE TONSILLITIS, equals No, proceed to Numerator.
11. Start Numerator
12. Check Laboratory Test Results:
  - a. If the Laboratory Test Results QDM data element, GROUP A STREPTOCOCCUS TEST (result), less than or equal to 3 days starts before end of Occurrence A of QDM data element Encounter Performed, AMBULATORY/ED VISIT, equals Yes, include in Numerator count. Numerator is represented by the Letter a in the sample

calculation listed at the end of this document. Letter a equals 7 patients in the sample calculation.

- b. If the Laboratory Test Results QDM data element, GROUP A STREPTOCOCCUS TEST (result), less than or equal to 3 days starts before end of Occurrence A of QDM data element Encounter Performed, AMBULATORY/ED VISIT equals No, proceed to check next Laboratory Test Result.

### 13. Check Laboratory Test Results

- a. If the Laboratory Test Results QDM data element, GROUP A STREPTOCOCCUS TEST (result), less than or equal to 3 days starts after end of Occurrence A of QDM data element Encounter Performed, AMBULATORY/ED VISIT, equals Yes, include in Numerator count. Numerator is represented by the Letter a in the sample calculation listed at the end of this document. Letter a equals 7 patients in the sample calculation.
- b. If the Laboratory Test Results QDM data element, GROUP A STREPTOCOCCUS TEST (result), less than or equal to 3 days starts after end of Occurrence A of QDM data element Encounter Performed, AMBULATORY/ED VISIT, equals No, include in the No/Missing Numerator Data Submitted count and Stop Processing.

#### SAMPLE CALCULATION:

**Performance Rate =**

$$\frac{\text{Numerator (a=7 patients)}}{\text{Denominator (b=10 patients) - Denominator Exclusions (c=2 patients) - Denominator Exceptions (N/A)}} = 87.50\%$$