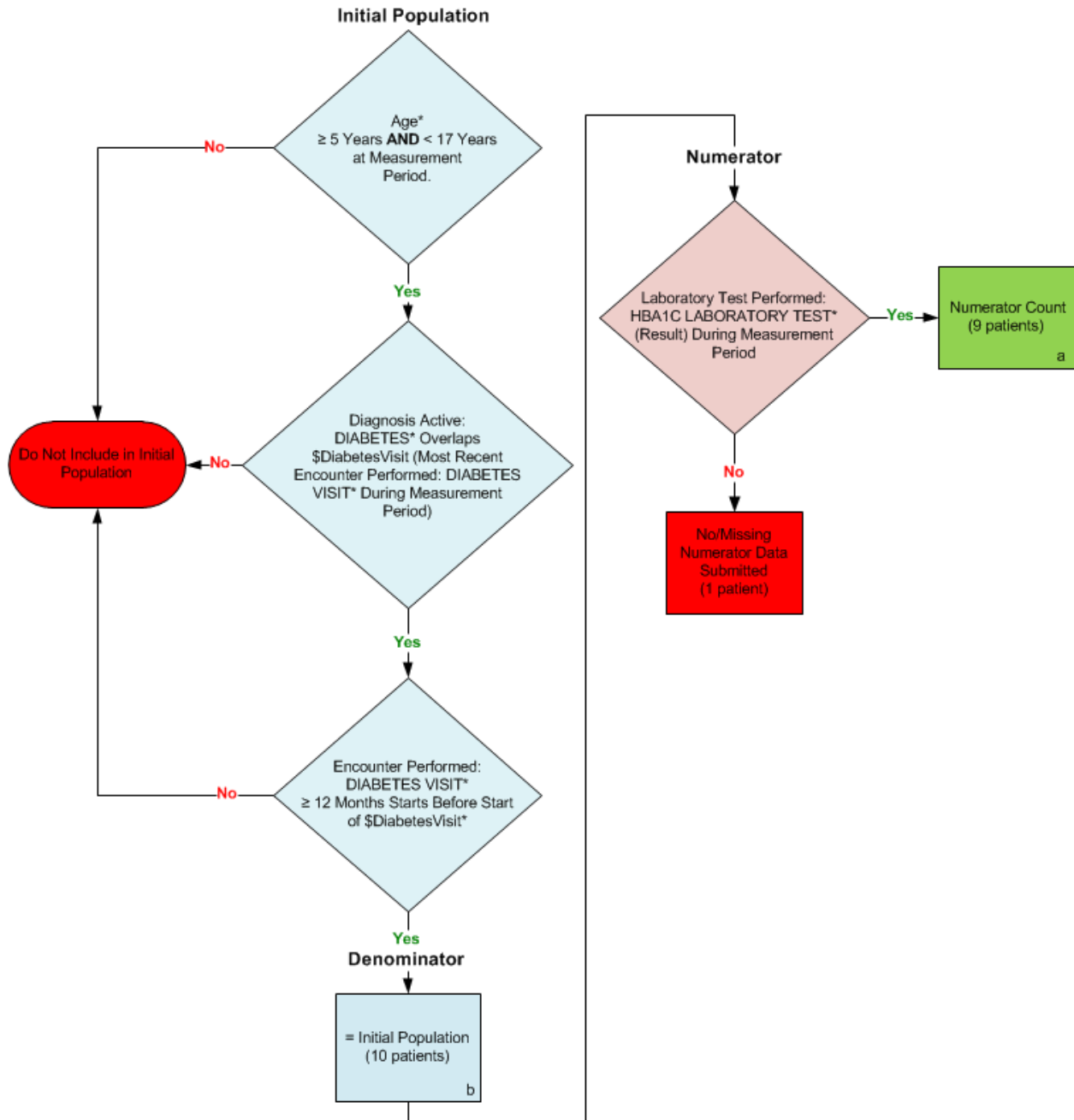


**2014 eCQM Flow**  
**Measure Identifier: CMS148v4**  
 NQF 0060: Hemoglobin A1c Test for Pediatric Patients



\*Please refer to the specific section of the eCQM to identify the QDM data elements and associated value sets for use in reporting this eCQM.

**SAMPLE CALCULATION:**

**Performance Rate =**  

$$\frac{\text{Numerator (a = 9 patients)}}{\text{Denominator (b = 10 patients) - Denominator Exclusions (N/A) - Denominator Exceptions (N/A)}} = 90.00\%$$

2014 eCQM Flows  
Measure Identifier: CMS148v4  
NQF 0060: Hemoglobin A1c Test for Pediatric Patients

Please refer to the specific section of the eCQM to identify the Population Criteria and associated value sets for use in reporting this eCQM.

1. Start Initial Population
2. Check Age:
  - a. If the AGE greater than or equal to 5 years of age and less than 17 years of age at measurement period equals No, do not include in Initial Population. Stop Processing.
  - b. If the AGE greater than or equal to 5 years of age and less than 17 years of age at measurement period equals Yes, proceed to check Diagnosis Active.
3. Check Diagnosis Active:
  - a. If the Diagnosis Active QDM data element, DIABETES, overlaps \$DiabetesVisit (Most Recent Encounter Performed QDM data element, DIABETES VISIT, during measurement period), equals Yes, proceed to check Encounter Performed.
  - b. If the Diagnosis Active QDM data element, DIABETES, overlaps \$DiabetesVisit (Most Recent Encounter Performed QDM data element, DIABETES VISIT, during measurement period), equals No, do not include in Initial Population. Stop Processing.
4. Check Encounter Performed:
  - a. If the Encounter Performed QDM data element, DIABETES VISIT, greater than or equal to 12 months starts before start of \$DiabetesVisit (Most Recent Encounter Performed QDM data element, DIABETES VISIT, during measurement period), equals Yes, include in the Initial Population and continue on to the Denominator.
  - b. If the Encounter Performed QDM data element, DIABETES VISIT, greater than or equal to 12 months starts before start of \$DiabetesVisit (Most Recent Encounter Performed QDM data element, DIABETES VISIT, during measurement period), equals No, do not include in the Initial Population. Stop Processing.
5. Start Denominator
  - a. Denominator equals the Initial Population. Denominator is represented by letter b in the sample calculation listed at the end of this document. Letter b equals 10 patients in the sample calculation.
6. Start Numerator
7. Check Laboratory Test Performed:
  - a. If the Laboratory Test Performed QDM data element, HBA1C LABORATORY TEST (result), during measurement period equals Yes, include in Numerator Count. Numerator is represented by Letter a in the sample calculation listed at the end of this document. Letter a equals 9 patients in the sample calculation.

- b. If the Laboratory Test Performed QDM data element, HBA1C LABORATORY TEST (result), during measurement period equals No, include in the No/Missing Data Submitted count. Stop Processing.

<b>SAMPLE CALCULATION:</b>	
<b>Performance Rate =</b>	
$\frac{\text{Numerator (a = 9 patients)}}{\text{Denominator (b = 10 patients) – Denominator Exclusions (N/A) – Denominator Exceptions (N/A)}}$	<b>= 90.00%</b>