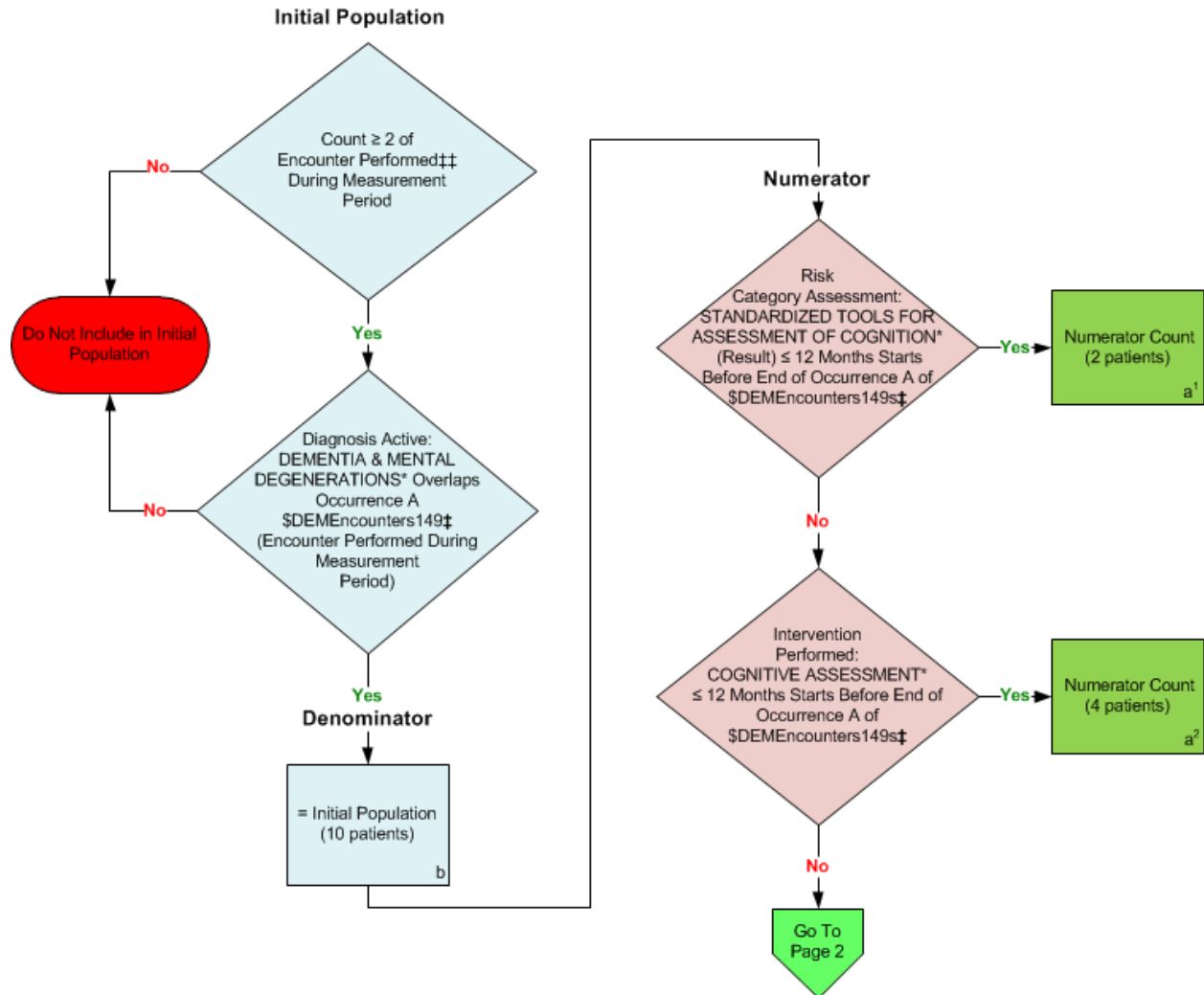


2014 eCQM Flow
Measure Identifier: CMS149v4
Dementia: Cognitive Assessment



*Please refer to the specific section of the eCQM to identify the QDM data elements and associated value sets for use in reporting this eCQM.

‡ For a listing of appropriate encounters, please refer to the Population Criteria and associated value sets as specific data elements have not been listed.

†† For a listing of appropriate encounters, please refer to the Population Criteria and associated value sets as specific data elements have not been listed.

2014 eCQM Flows
Measure Identifier: CMS149v4
Dementia: Cognitive Assessment

Please refer to the specific section of the eCQM to identify the Population Criteria and associated value sets for use in reporting this eCQM.

1. Start Initial Population
2. Check Encounter Performed: Count greater than or equal to 2:
 - a. If the Encounter Performed QDM data element, PSYCH VISIT – DIAGNOSTIC EVALUATION, during measurement period equals No, proceed to check next Encounter.
 - b. If the Encounter Performed QDM data element, PSYCH VISIT – DIAGNOSTIC EVALUATION, during measurement period equals Yes, check for another Encounter Performed until total number of encounters are greater than or equal to 2. If count greater than or equal to 2, proceed to check Diagnosis Active.
 - c. If the Encounter Performed QDM data element, NURSING FACILITY VISIT, during measurement period equals No, proceed to check next Encounter.
 - d. If the Encounter Performed QDM data element, NURSING FACILITY VISIT, during measurement period equals Yes, check for another Encounter Performed until total number of encounters are greater than or equal to 2. If count greater than or equal to 2, proceed to check Diagnosis Active.
 - e. If the Encounter Performed QDM data element, CARE SERVICES IN LONG-TERM RESIDENTIAL FACILITY, during measurement period equals No, proceed to check next Encounter.
 - f. If the Encounter Performed QDM data element, CARE SERVICES IN LONG-TERM RESIDENTIAL FACILITY, during measurement period equals Yes, check for another Encounter Performed until total number of encounters are greater than or equal to 2. If count greater than or equal to 2, proceed to check Diagnosis Active.
 - g. If the Encounter Performed QDM data element, HOME HEALTHCARE SERVICES, during measurement period equals No, proceed to check next Encounter.
 - h. If the Encounter Performed QDM data element, HOME HEALTHCARE SERVICES, during measurement period equals Yes, check for another Encounter Performed until total number of encounters are greater than or equal to 2. If count greater than or equal to 2, proceed to check Diagnosis Active.
 - i. If the Encounter Performed QDM data element, PATIENT PROVIDER INTERACTION, during measurement period equals No, proceed to check next Encounter.
 - j. If the Encounter Performed QDM data element, PATIENT PROVIDER INTERACTION, during measurement period equals Yes, check for another Encounter Performed until total number of encounters are greater than or equal to 2. If count greater than or equal to 2, proceed to check Diagnosis Active.
 - k. If the Encounter Performed QDM data element, PSYCH VISIT - PSYCHOTHERAPY, during measurement period equals No, proceed to check next Encounter.
 - l. If the Encounter Performed QDM data element, PSYCH VISIT - PSYCHOTHERAPY, during measurement period equals Yes, check for another Encounter Performed until total number of encounters are greater than or equal to 2. If count greater than or equal to 2, proceed to check Diagnosis Active.

- m. If the Encounter Performed QDM data element, BEHAVIORAL/NEUROPSYCH ASSESSMENT, during measurement period equals No, proceed to check next Encounter.
 - n. If the Encounter Performed QDM data element, BEHAVIORAL/NEUROPSYCH ASSESSMENT, during measurement period equals Yes, check for another Encounter Performed until total number of encounters are greater than or equal to 2. If count greater than or equal to 2, proceed to check Diagnosis Active.
 - o. If the Encounter Performed QDM data element, OCCUPATIONAL THERAPY EVALUATION, during measurement period equals No, proceed to check next Encounter.
 - p. If the Encounter Performed QDM data element, OCCUPATIONAL THERAPY EVALUATION, during measurement period equals Yes, check for another Encounter Performed until total number of encounters are greater than or equal to 2. If count greater than or equal to 2, proceed to check Diagnosis Active.
 - q. If the Encounter Performed QDM data element, OFFICE VISIT, during measurement period equals No, proceed to check next Encounter.
 - r. If the Encounter Performed QDM data element, OFFICE VISIT during measurement period equals Yes, check for another Encounter Performed until total number of encounters are greater than or equal to 2. If count greater than or equal to 2, proceed to check Diagnosis Active.
 - s. If the Encounter Performed QDM data element, OUTPATIENT CONSULTATION, during measurement period equals No, do not include in Initial Population. Stop Processing.
 - t. If the Encounter Performed QDM data element, OUTPATIENT CONSULTATION, during measurement period equals Yes, proceed to check Diagnosis Active if count greater than or equal to 2. If count not greater than or equal to 2, do not include in Initial Population. Stop Processing.
3. Check Diagnosis Active:
- a. If the Diagnosis Active QDM data element, DEMENTIA AND MENTAL DEGENERATIONS, overlaps Occurrence A of \$DEMEncounters149 (QDM data element, PSYCH VISIT – DIAGNOSTIC EVALUATION, or NURSING FACILITY VISIT, or CARE SERVICES IN LONG-TERM RESIDENTIAL FACILITY, or HOME HEALTHCARE SERVICES, or FACE-TO-FACE INTERVENTION, or PSYCH VISIT-PSYCHOTHERAPY, or BEHAVIORAL/NEUROPSYCH ASSESSMENT, or OCCUPATIONAL THERAPY EVALUATION, or OFFICE VISIT, or OUTPATIENT CONSULTATION, during measurement period) equals No, do not include in Initial Population. Stop Processing.
 - b. If the Diagnosis Active QDM data element, DEMENTIA AND MENTAL DEGENERATIONS, overlaps Occurrence A of \$DEMEncounters149 (QDM data element, PSYCH VISIT – DIAGNOSTIC EVALUATION, or NURSING FACILITY VISIT, or CARE SERVICES IN LONG-TERM RESIDENTIAL FACILITY, or HOME HEALTHCARE SERVICES, or FACE-TO-FACE INTERVENTION, or PSYCH VISIT-PSYCHOTHERAPY, or BEHAVIORAL/NEUROPSYCH ASSESSMENT, or OCCUPATIONAL THERAPY EVALUATION, or OFFICE VISIT, or OUTPATIENT CONSULTATION, during measure period) equals Yes, include in the Initial Population and continue on to the Denominator.
4. Start Denominator

- a. Denominator equals the Initial Population. Denominator is represented by letter b in the sample calculation listed at the end of this document. Letter b equals 10 patients in the sample calculation.
5. Start Numerator
6. Check Risk Category Assessment:
 - a. If the Risk Category Assessment QDM data element, STANDARDIZED TOOLS FOR ASSESSMENT OF COGNITION (result), less than or equal to 12 months starts before end of Occurrence A of \$DEMEncounters149 (QDM data element, PSYCH VISIT – DIAGNOSTIC EVALUATION, or NURSING FACILITY VISIT, or CARE SERVICES IN LONG-TERM RESIDENTIAL FACILITY, or HOME HEALTHCARE SERVICES, or FACE-TO-FACE INTERVENTION, or PSYCH VISIT-PSYCHOTHERAPY, or BEHAVIORIAL/NEUROPSYCH ASSESSMENT, or OCCUPATIONAL THERAPY EVALUATION, or OFFICE VISIT, or OUTPATIENT CONSULTATION, during measurement period) equals No, proceed to check Intervention Performed.
 - b. If the Risk Category Assessment QDM data element, STANDARDIZED TOOLS FOR ASSESSMENT OF COGNITION (result), less than or equal to 12 months starts before end of Occurrence A of \$DEMEncounters149 (QDM data element, PSYCH VISIT – DIAGNOSTIC EVALUATION, or NURSING FACILITY VISIT, or CARE SERVICES IN LONG-TERM RESIDENTIAL FACILITY, or HOME HEALTHCARE SERVICES, or FACE-TO-FACE INTERVENTION, or PSYCH VISIT-PSYCHOTHERAPY, or BEHAVIORIAL/NEUROPSYCH ASSESSMENT, or OCCUPATIONAL THERAPY EVALUATION, or OFFICE VISIT, or OUTPATIENT CONSULTATION, during measurement period) equals Yes, include in Numerator Count, which is represented by Letter a¹ in the sample calculation listed at the end of this document. Letter a¹ equals 2 patients. Stop Processing.
7. Check Intervention Performed:
 - a. If the Intervention Performed QDM data element, COGNITIVE ASSESSMENT, less than or equal to 12 months starts before end of Occurrence A of \$DEMEncounters149 (QDM data element, PSYCH VISIT – DIAGNOSTIC EVALUATION, or NURSING FACILITY VISIT, or CARE SERVICES IN LONG-TERM RESIDENTIAL FACILITY, or HOME HEALTHCARE SERVICES, or FACE-TO-FACE INTERVENTION, or PSYCH VISIT-PSYCHOTHERAPY, or BEHAVIORIAL/NEUROPSYCH ASSESSMENT, or OCCUPATIONAL THERAPY EVALUATION, or OFFICE VISIT, or OUTPATIENT CONSULTATION, during measurement period), equals No, proceed to check Denominator Exceptions.
 - b. If the Intervention Performed QDM data element, COGNITIVE ASSESSMENT, less than or equal to 12 months starts before end of Occurrence A of \$DEMEncounters149 (QDM data element, PSYCH VISIT – DIAGNOSTIC EVALUATION, or NURSING FACILITY VISIT, or CARE SERVICES IN LONG-TERM RESIDENTIAL FACILITY, or HOME HEALTHCARE SERVICES, or FACE-TO-FACE INTERVENTION, or PSYCH VISIT-PSYCHOTHERAPY, or BEHAVIORIAL/NEUROPSYCH ASSESSMENT, or OCCUPATIONAL THERAPY EVALUATION, or OFFICE VISIT, or OUTPATIENT CONSULTATION, during measurement period), equals Yes, include in Numerator Count, which is represented by Letter a² in the sample calculation listed at the end of this document. Letter a² equals 4 patients. Stop Processing.

8. Check Denominator Exceptions

9. Check Diagnosis Active:

- a. If the Diagnosis Active QDM data element, SEVERE DEMENTIA, overlaps Occurrence A of \$DEMEncounters149 (QDM data element, PSYCH VISIT – DIAGNOSTIC EVALUATION, or NURSING FACILITY VISIT, or CARE SERVICES IN LONG-TERM RESIDENTIAL FACILITY, or HOME HEALTHCARE SERVICES, or FACE-TO-FACE INTERVENTION, or PSYCH VISIT-PSYCHOTHERAPY, or BEHAVIORIAL/NEUROPSYCH ASSESSMENT, or OCCUPATIONAL THERAPY EVALUATION, or OFFICE VISIT, or OUTPATIENT CONSULTATION, during measurement period), equals No, proceed to check Risk Category Assessment Not Done.
- b. If the Diagnosis Active QDM data element, SEVERE DEMENTIA, overlaps Occurrence A of \$DEMEncounters149 (QDM data element, PSYCH VISIT – DIAGNOSTIC EVALUATION, or NURSING FACILITY VISIT, or CARE SERVICES IN LONG-TERM RESIDENTIAL FACILITY, or HOME HEALTHCARE SERVICES, or FACE-TO-FACE INTERVENTION, or PSYCH VISIT-PSYCHOTHERAPY, or BEHAVIORIAL/NEUROPSYCH ASSESSMENT, or OCCUPATIONAL THERAPY EVALUATION, or OFFICE VISIT, or OUTPATIENT CONSULTATION, during measurement period), equals Yes, include in Denominator Exception Count, which is represented by Letter c¹ in the sample calculation listed at the end of this document. Letter c¹ equals 1 patient. Stop Processing.

10. Check Risk Category Assessment Not Done:

- a. If the Risk Category Assessment Not Done QDM data element, MEDICAL REASON, or the QDM data element, PATIENT REASON, for Standardized Tools for Assessment of Cognition starts during Occurrence A of \$DEMEncounters149 (QDM data element, PSYCH VISIT – DIAGNOSTIC EVALUATION, or NURSING FACILITY VISIT, or CARE SERVICES IN LONG-TERM RESIDENTIAL FACILITY, or HOME HEALTHCARE SERVICES, or FACE-TO-FACE INTERVENTION, or PSYCH VISIT-PSYCHOTHERAPY, or BEHAVIORIAL/NEUROPSYCH ASSESSMENT, or OCCUPATIONAL THERAPY EVALUATION, or OFFICE VISIT, or OUTPATIENT CONSULTATION, during measurement period), equals No, proceed to check Intervention Performed.
- b. If the Risk Category Assessment Not Done QDM data element, MEDICAL REASON, or the QDM data element, PATIENT REASON, for Standardized Tools for Assessment of Cognition starts during Occurrence A of \$DEMEncounters149 (QDM data element, PSYCH VISIT – DIAGNOSTIC EVALUATION, or NURSING FACILITY VISIT, or CARE SERVICES IN LONG-TERM RESIDENTIAL FACILITY, or HOME HEALTHCARE SERVICES, or FACE-TO-FACE INTERVENTION, or PSYCH VISIT-PSYCHOTHERAPY, or BEHAVIORIAL/NEUROPSYCH ASSESSMENT, or OCCUPATIONAL THERAPY EVALUATION, or OFFICE VISIT, or OUTPATIENT CONSULTATION, during measurement period), equals Yes, include in Denominator Exception Count, which is represented by Letter c² in the sample calculation listed at the end of this document. Letter c² equals 2 patients. Stop Processing.

11. Check Intervention Performed:

- a. If the Intervention Performed the Intervention Performed QDM data element, PALLIATIVE CARE, overlaps Occurrence A of \$DEMEncounters149 (QDM data element, PSYCH VISIT – DIAGNOSTIC EVALUATION, or NURSING FACILITY

VISIT, or CARE SERVICES IN LONG-TERM RESIDENTIAL FACILITY, or HOME HEALTHCARE SERVICES, or FACE-TO-FACE INTERVENTION, or PSYCH VISIT-PSYCHOTHERAPY, or BEHAVIORIAL/NEUROPSYCH ASSESSMENT, or OCCUPATIONAL THERAPY EVALUATION, or OFFICE VISIT, or OUTPATIENT CONSULTATION, during measurement period), equals No, proceed to check Intervention Performed Not Done.

- b. If the Intervention Performed QDM data element, PALLIATIVE CARE, overlaps Occurrence A of \$DEMEncounters149 (QDM data element, PSYCH VISIT – DIAGNOSTIC EVALUATION, or NURSING FACILITY VISIT, or CARE SERVICES IN LONG-TERM RESIDENTIAL FACILITY, or HOME HEALTHCARE SERVICES, or FACE-TO-FACE INTERVENTION, or PSYCH VISIT-PSYCHOTHERAPY, or BEHAVIORIAL/NEUROPSYCH ASSESSMENT, or OCCUPATIONAL THERAPY EVALUATION, or OFFICE VISIT, or OUTPATIENT CONSULTATION, during measure period), equals Yes, include in Denominator Exception Count, which is represented by Letter c3 in the sample calculation listed at the end of this document. Letter c3 equals 0 patients. Stop Processing.

12. Check Intervention Performed Not Done:

- a. If the Intervention Performed Not Done QDM data element, MEDICAL REASON, or QDM data element PATIENT REASON, for Cognition Assessment starts during Occurrence A of \$DEMEncounters149 (QDM data element, PSYCH VISIT – DIAGNOSTIC EVALUATION, or NURSING FACILITY VISIT, or CARE SERVICES IN LONG-TERM RESIDENTIAL FACILITY, or HOME HEALTHCARE SERVICES, or FACE-TO-FACE INTERVENTION, or PSYCH VISIT-PSYCHOTHERAPY, or BEHAVIORIAL/NEUROPSYCH ASSESSMENT, or OCCUPATIONAL THERAPY EVALUATION, or OFFICE VISIT, or OUTPATIENT CONSULTATION, during measurement period), equals No, include in the No/Missing Data Submitted Count. Stop Processing.
- b. If the Intervention Performed Not Done QDM data element, MEDICAL REASON, or QDM data element PATIENT REASON, for Cognition Assessment starts during Occurrence A of \$DEMEncounters149 (QDM data element, PSYCH VISIT – DIAGNOSTIC EVALUATION, or NURSING FACILITY VISIT, or CARE SERVICES IN LONG-TERM RESIDENTIAL FACILITY, or HOME HEALTHCARE SERVICES, or FACE-TO-FACE INTERVENTION, or PSYCH VISIT-PSYCHOTHERAPY, or BEHAVIORIAL/NEUROPSYCH ASSESSMENT, or OCCUPATIONAL THERAPY EVALUATION, or OFFICE VISIT, or OUTPATIENT CONSULTATION, during measurement period), equals Yes, include in Denominator Exception Count, which is represented by Letter c⁴ in the sample calculation listed at the end of this document. Letter c⁴ equals 0 patients. Stop Processing.

SAMPLE CALCULATION:

Performance Rate =

$$\frac{\text{Numerator (a}^1 + \text{a}^2 = 6 \text{ Patients)}}{\text{Denominator (b=10 Patients) – Denominator Exclusions (N/A) – Denominator Exceptions (c}^1 + \text{c}^2 + \text{c}^3 + \text{c}^4 = 3 \text{ Patients)}} = 85.71\%$$