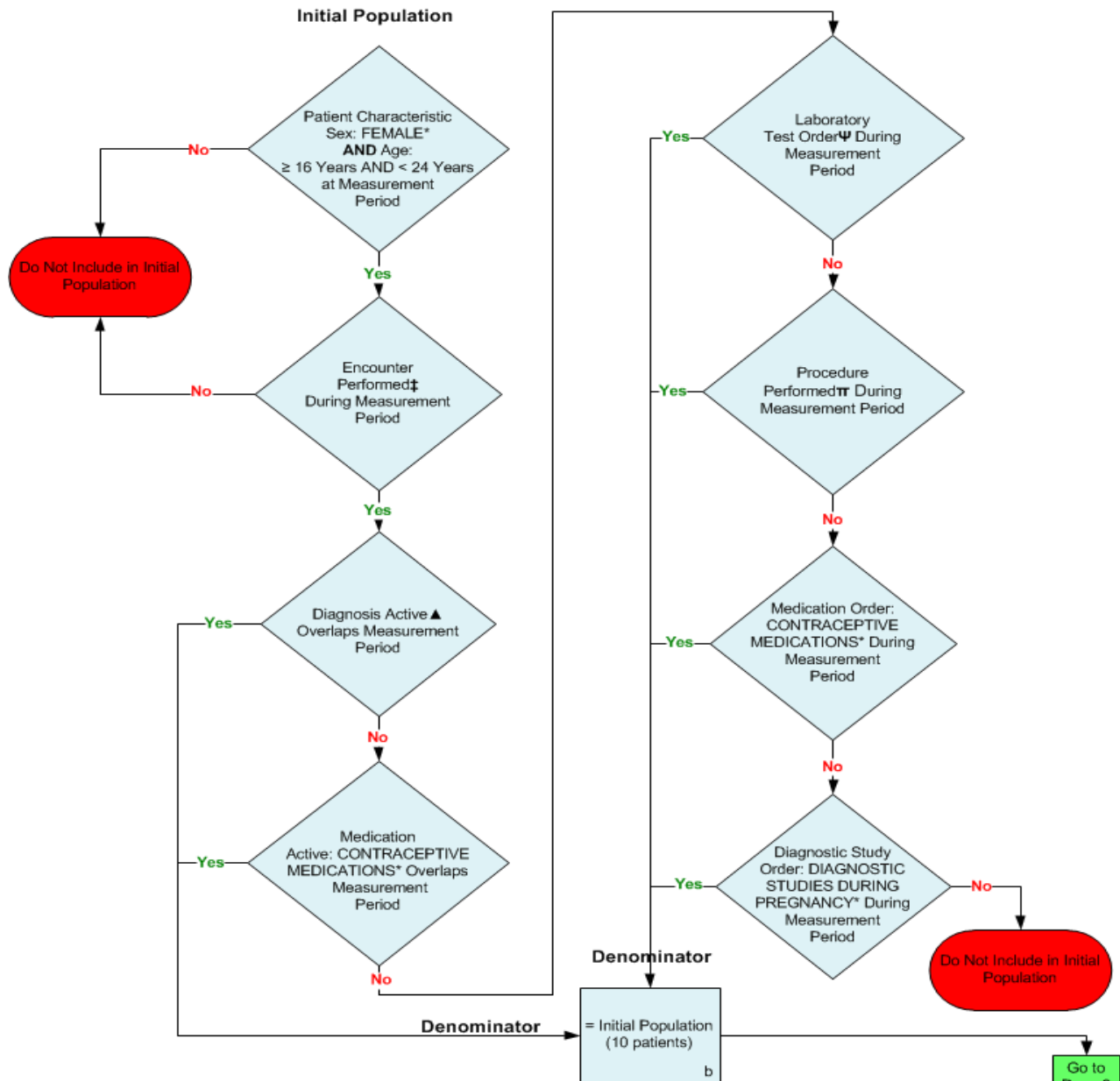


2014 eCQM Flow
Measure Identifier: CMS153v4
 NQF 0033: Chlamydia Screening for Women



*Please refer to the specific section of the eCQM to identify the QDM data elements and associated value sets for use in reporting this eCQM.

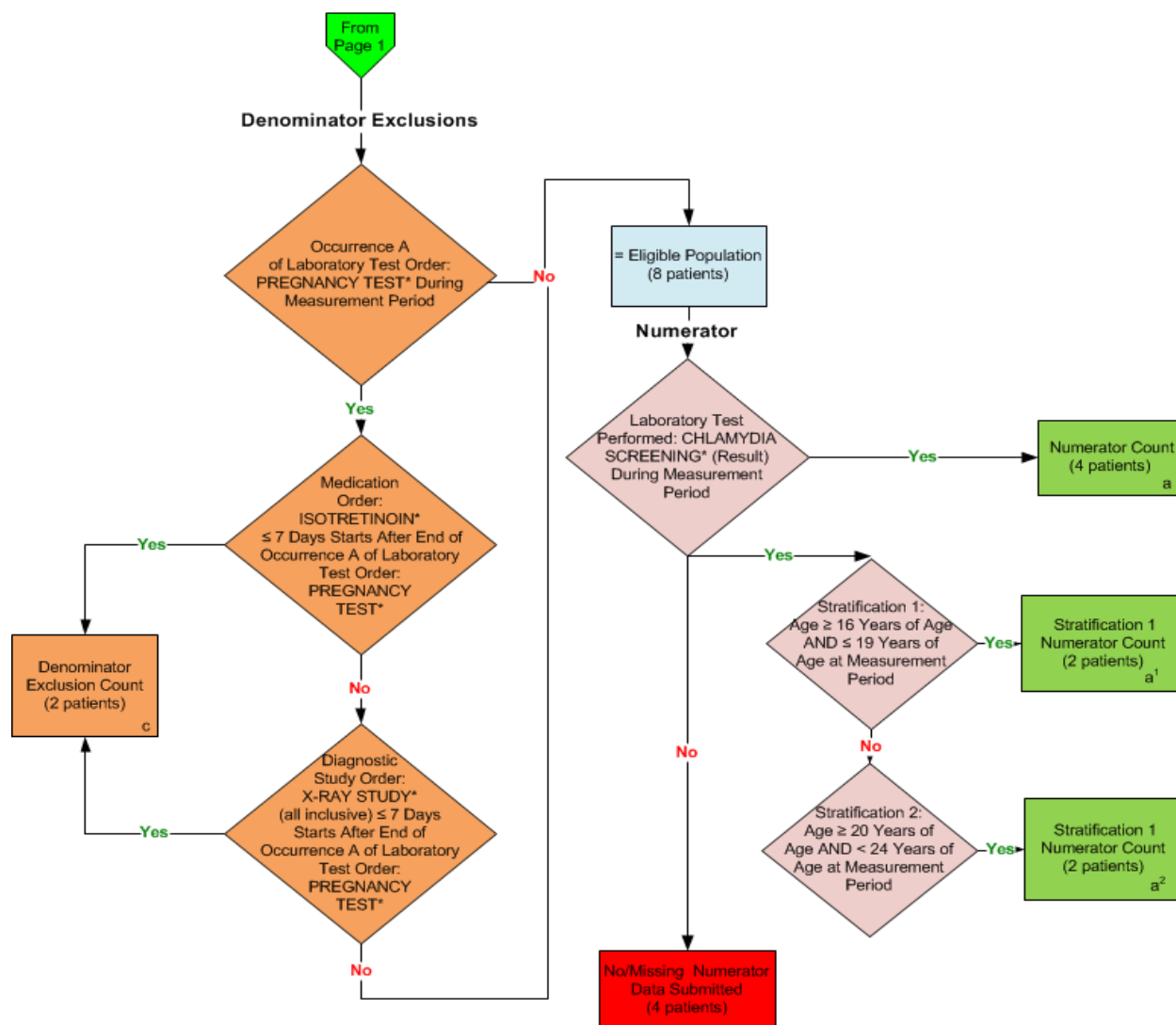
‡ For a listing of appropriate encounters, please refer to the Population Criteria and associated value sets as specific data elements have not been listed.

▲ For a listing of appropriate diagnosis codes to identify sexually active women please refer to the Population Criteria and associated value sets as specific data element names have not been listed.

Ψ For a listing of appropriate laboratory tests to identify sexually active women please refer to the Population Criteria and associated value sets as specific data element names have not been listed.

Ⓣ For a listing of appropriate procedures to identify sexually active women please refer to the Population Criteria and associated value sets as specific data element names have not been listed.

2014 eCQM Flow
Measure Identifier: CMS153v4
 NQF 0033: Chlamydia Screening for Women



*Please refer to the specific section of the eCQM to identify the QDM data elements and associated value sets for use in reporting this eCQM.

SAMPLE CALCULATION with Stratification

Performance Rate =

Numerator (a=4 Patients) = 50.00%
 Denominator (b=10 Patients) – Denominator Exclusions (c=2 Patients) – Denominator Exceptions (N/A)

Stratification 1

Numerator (a¹=2 patients) = 25.00%
 Denominator (b=10 patients) – Denominator Exclusions (c=2 Patients) – Denominator Exceptions (N/A)

Stratification 2

Numerator (a²=2 patients) = 25.00%
 Denominator (b=10 patients) – Denominator Exclusions (c=2 Patients) – Denominator Exceptions (N/A)

2014 eCQM Flows
Measure Identifier: CMS153v4
NQF 0033: Chlamydia Screening for Women

Please refer to the specific section of the eCQM to identify the Population Criteria and associated value sets for use in reporting this eCQM.

1. Start Initial Population
2. Check Patient Characteristic Sex and Age:
 - a. If FEMALE and AGE greater than or equal to 16 years AND less than 24 years of age at measurement period equals Yes, continue processing and proceed to Encounter Performed.
 - b. If FEMALE and AGE greater than or equal to 16 years AND less than 24 years of age at measurement period, equals No, do not include in Initial Population and stop processing.
3. Check Encounter Performed:
 - a. If the Encounter Performed QDM data element, OFFICE VISIT, during the measurement period equals Yes, proceed to check Diagnosis Active.
 - b. If the Encounter Performed QDM data element, OFFICE VISIT, during the measurement period equals No, proceed to check next Encounter Performed.
 - c. If the Encounter Performed QDM data element, FACE-TO-FACE INTERACTION, during the measurement period equals Yes, proceed to check Diagnosis Active.
 - d. If the Encounter Performed QDM data element, FACE-TO-FACE INTERACTION, during the measurement period equals No, proceed to check next Encounter Performed.
 - e. If the Encounter Performed QDM data element, PREVENTIVE CARE SERVICES – ESTABLISHED OFFICE VISIT, 18 AND UP, during the measurement period equals Yes, proceed to check Diagnosis Active.
 - f. If the Encounter Performed QDM data element, PREVENTIVE CARE SERVICES – ESTABLISHED OFFICE VISIT, 18 AND UP, during the measurement period equals No, proceed to check next Encounter Performed.
 - g. If the Encounter Performed QDM data element, PREVENTIVE CARE SERVICES – INITIAL OFFICE VISIT, 18 AND UP, during the measurement period equals Yes, proceed to check Diagnosis Active.
 - h. If the Encounter Performed QDM data element, PREVENTIVE CARE SERVICES – INITIAL OFFICE VISIT, 18 AND UP, during the measurement period equals No, proceed to check next Encounter Performed.
 - i. If the Encounter Performed QDM data element, PREVENTIVE CARE – ESTABLISHED OFFICE VISIT, 0 TO 17, during the measurement period equals Yes, proceed to check Diagnosis Active.
 - j. If the Encounter Performed QDM data element, PREVENTIVE CARE – ESTABLISHED OFFICE VISIT, 0 TO 17, during the measurement period equals No, proceed to check next Encounter Performed.

- k. If the Encounter Performed QDM data element, PREVENTIVE CARE – INITIAL OFFICE VISIT, 0 TO 17, during the measurement period equals Yes, proceed to check Diagnosis Active.
 - l. If the Encounter Performed QDM data element, PREVENTIVE CARE – INITIAL OFFICE VISIT, 0 TO 17, during the measurement period equals No, proceed to check next Encounter Performed.
 - m. If the Encounter Performed QDM data element, HOME HEALTHCARE SERVICES, during the measurement period equals Yes, proceed to check Diagnosis Active.
 - n. If the Encounter Performed QDM data element, HOME HEALTHCARE SERVICES during the measurement period equals No, do not include in Initial Population and stop processing.
4. Check Diagnosis Active:
- a. If the Diagnosis Active QDM data element, OTHER FEMALE REPRODUCTIVE CONDITIONS, overlaps measurement period equals Yes, include in Initial Population and proceed to Denominator.
 - b. If the Diagnosis Active QDM data element, OTHER FEMALE REPRODUCTIVE CONDITIONS, overlaps measurement period equals No, proceed to check next Diagnosis Active.
 - c. If the Diagnosis Active QDM data element, GENITAL HERPES, overlaps of measurement period equals Yes, include in Initial Population and proceed to Denominator.
 - d. If the Diagnosis Active QDM data element, GENITAL HERPES, overlaps measurement period equals No, proceed to check next Diagnosis Active.
 - e. If the Diagnosis Active QDM data element, GONOCOCCAL INFECTIONS AND VENEREAL DISEASES, overlaps measurement period equals Yes, include in Initial Population and proceed to Denominator.
 - f. If the Diagnosis Active QDM data element, GONOCOCCAL INFECTIONS AND VENEREAL DISEASES, overlaps measurement period equals No, proceed to check next Diagnosis Active.
 - g. If the Diagnosis Active QDM data element, INFLAMMATORY DISEASES OF FEMALE REPRODUCTIVE ORGANS, overlaps measurement period equals Yes, include in Initial Population and proceed to Denominator.
 - h. If the Diagnosis Active QDM data element, INFLAMMATORY DISEASES OF FEMALE REPRODUCTIVE ORGANS, overlaps measurement period equals No, proceed to check next Diagnosis Active.
 - i. If the Diagnosis Active QDM data element, CHLAMYDIA, overlaps measurement period equals Yes, include in Initial Population and proceed to Denominator.
 - j. If the Diagnosis Active QDM data element, CHLAMYDIA, overlaps measurement period equals No, proceed to check next Diagnosis Active.
 - k. If the Diagnosis Active QDM data element, HIV, overlaps measurement period equals Yes, include in Initial Population and proceed to Denominator.
 - l. If the Diagnosis Active QDM data element, HIV, overlaps measurement period equals No, proceed to check next Diagnosis Active.
 - m. If the Diagnosis Active QDM data element, SYPHILIS, overlaps measurement period equals Yes, include in Initial Population and proceed to Denominator.

- n. If the Diagnosis Active QDM data element, SYPHILIS, overlaps measurement period equals No, proceed to check next Diagnosis Active.
 - o. If the Diagnosis Active QDM data element, COMPLICATIONS OF PREGNANCY, CHILDBIRTH AND THE PUERPERIUM, overlaps measurement period equals Yes, include in Initial Population and proceed to Denominator.
 - p. If the Diagnosis Active QDM data element, COMPLICATIONS OF PREGNANCY, CHILDBIRTH AND THE PUERPERIUM, overlaps measurement period equals No, proceed to check Medication Active.
5. Check Medication Active:
- a. If the Medication Active QDM data element, CONTRACEPTIVE MEDICATIONS, overlaps measurement period equals Yes, include in Initial Population and proceed to Denominator.
 - b. If the Medication Active QDM data element, CONTRACEPTIVE MEDICATIONS, overlaps measurement period equals No, proceed to check Laboratory Test Order.
6. Check Laboratory Test Order:
- a. If the Laboratory Test Order QDM data element: PREGNANCY TEST, during measurement period equals Yes, include in Initial Population and proceed to Denominator.
 - b. If the Laboratory Test Order QDM data element: PREGNANCY TEST, during measurement period equals No, proceed to check next Laboratory Test Order.
 - c. If the Laboratory Test Order QDM data element: PAP TEST, during measurement period equals Yes, include in Initial Population and proceed to Denominator.
 - d. If the Laboratory Test Order QDM data element: PAP TEST, during measurement period equals No, proceed to check next Laboratory Test Order.
 - e. If the Laboratory Test Order QDM data element: LAB TESTS DURING PREGNANCY, during measurement period equals Yes, include in Initial Population and proceed to Denominator.
 - f. If the Laboratory Test Order QDM data element: LAB TESTS DURING PREGNANCY, during measurement period equals No, proceed to check next Laboratory Test Order.
 - g. If the Laboratory Test Order QDM data element: LAB TESTS FOR SEXUALLY TRANSMITTED INFECTIONS, during measurement period equals Yes, include in Initial Population and proceed to Denominator.
 - h. If the Laboratory Test Order QDM data element: LAB TESTS FOR SEXUALLY TRANSMITTED INFECTIONS, during measurement period equals No, proceed to check Procedure Performed.
7. Check Procedure Performed:
- a. If the Procedure Performed, QDM data element: DELIVERY LIVE BIRTHS, during measurement period equals Yes, include in Initial Population and proceed to Denominator.
 - b. If the Procedure Performed, QDM data element: DELIVERY LIVE BIRTHS, during measurement period equals No, proceed to check next Procedure Performed.

- c. If the Procedure Performed, QDM data element: PROCEDURES DURING PREGNANCY, during measurement period equals Yes, include in Initial Population and proceed to Denominator.
 - d. If the Procedure Performed, QDM data element: PROCEDURES DURING PREGNANCY, during measurement period equals No, proceed to check next Procedure Performed.
 - e. If the Procedure Performed, QDM data element: PROCEDURES INVOLVING CONTRACEPTIVE DEVICES, during measurement period equals Yes, include in Initial Population and proceed to Denominator.
 - f. If the Procedure Performed, QDM data element: PROCEDURES INVOLVING CONTRACEPTIVE DEVICES, during measurement period equals No, proceed to check Medication Order.
8. Check Medication Order:
- a. If the Medication Order, QDM data element: CONTRACEPTIVE MEDICATIONS, during measurement period equals Yes, include in Initial Population and proceed to Denominator.
 - b. If the Medication Order, QDM data element: CONTRACEPTIVE MEDICATIONS, during measurement period equals No, proceed to check Diagnostic Study Order.
9. Check Diagnostic Study Order:
- a. If the Diagnostic Study Order, QDM data element, DIAGNOSTIC STUDIES DURING PREGNANCY, during measurement period equals Yes, include in Initial Population and proceed to Denominator.
 - b. If the Diagnostic Study Order, QDM data element, DIAGNOSTIC STUDIES DURING PREGNANCY, during measurement period equals No, do not include in Initial Population and stop processing.
10. Start Denominator
- a. Denominator equals the Initial Population. Denominator is represented by the Letter b in the sample calculation listed at the end of this document. Letter b equals 10 patients in the sample calculation.
11. Start Denominator Exclusions
12. Check Occurrence A of Laboratory Test Order:
- a. If Occurrence A of Laboratory Test Order: QDM data element, PREGNANCY TEST, during measurement period equals Yes, proceed to check Medication Order.
 - b. If Occurrence A of Laboratory Test Order: QDM data element, PREGNANCY TEST, during measurement period equals No, include in eligible population and proceed to Numerator.
13. Check Medication Order:
- a. If the Medication Order, QDM data element: ISOTRETINOIN, less than or equal to 7 days starts after end of Occurrence A of Laboratory Test Order QDM data element, PREGNANCY TEST, equals Yes, include in Denominator Exclusions count. Denominator Exclusions are represented by the Letter c in the sample calculation

listed at the end of this document. Letter c equals 2 patients in the sample calculation. Stop Processing.

- b. If the Medication Order, QDM data element: ISOTRETINOIN, less than or equal to 7 days starts after end of Occurrence A of Laboratory Test Order QDM data element, PREGNANCY TEST, equals No, proceed to check Diagnostic Study Order.

14. Check Diagnostic Study Order:

- a. If the Diagnostic Study Order: QDM data element: X-RAY STUDY (all inclusive), less than or equal to 7 days starts after end of Occurrence A of Laboratory Test Order: QDM data element, PREGNANCY TEST, equals Yes, include in Denominator Exclusions count. Denominator Exclusions are represented by the Letter c in the sample calculation listed at the end of this document. Letter c equals 2 patients in the sample calculation. Stop Processing.
- b. If the Diagnostic Study Order, QDM data element: X-RAY STUDY (all inclusive,) less than or equal to 7 days starts after end of Occurrence A of Laboratory Test Order: QDM data element, PREGNANCY TEST, equals No, include in eligible population and proceed to Numerator.

15. Start Numerator

16. Check Laboratory Test Performed:

- a. If the Laboratory Test Performed: QDM data element, CHLAMYDIA SCREENING (result), during measurement period equals Yes, include in Numerator count. Numerator is represented by the Letter a in the sample calculation listed at the end of this document. Letter a equals 4 patients in the sample calculation. Proceed to Stratification 1 Numerator Count.
- b. If the Laboratory Test Performed: QDM data element, CHLAMYDIA SCREENING (result), during measurement period equals No, include in No/Missing Numerator Data Submitted count and stop processing.

17. Stratification 1 Numerator Count

- a. If the AGE greater than or equal to 16 years and less than or equal to 19 years of age at measurement period equals Yes, include in Stratification 1 Numerator Count. Stratification 1 Numerator Count is represented by Letter a¹. Letter a¹ equals 2 patients in the sample calculation. Stop Processing.
- b. If the AGE greater than or equal to 16 years and less than or equal to 19 years of age at measurement period equals No, proceed to Stratification 2 Numerator Count.

18. Stratification 2 Numerator Count

- a. If the AGE greater than or equal to 20 years and less than or equal to 24 years of age at measurement period equals Yes, include in Stratification 2 Numerator Count. Stratification 2 Numerator Count is represented by the Letter a². Letter a² equals 2 patients in the sample calculation. Stop Processing.
- b. If the AGE greater than or equal to 20 years and less than or equal to 24 years of age at measurement period equals No, Stop Processing.

SAMPLE CALCULATION with Stratification

Performance Rate =

$$\frac{\text{Numerator (a=4 Patients)}}{\text{Denominator (b=10 Patients) - Denominator Exclusions (c=2 Patients) - Denominator Exceptions (N/A)}} = 50.00\%$$

Stratification 1

$$\frac{\text{Numerator (a^1=2 patients)}}{\text{Denominator (b=10 patients) - Denominator Exclusions (c=2 Patients) - Denominator Exceptions (N/A)}} = 25.00\%$$

Stratification 2

$$\frac{\text{Numerator (a^2=2 patients)}}{\text{Denominator (b=10 patients) - Denominator Exclusions (c=2 Patients) - Denominator Exceptions (N/A)}} = 25.00\%$$