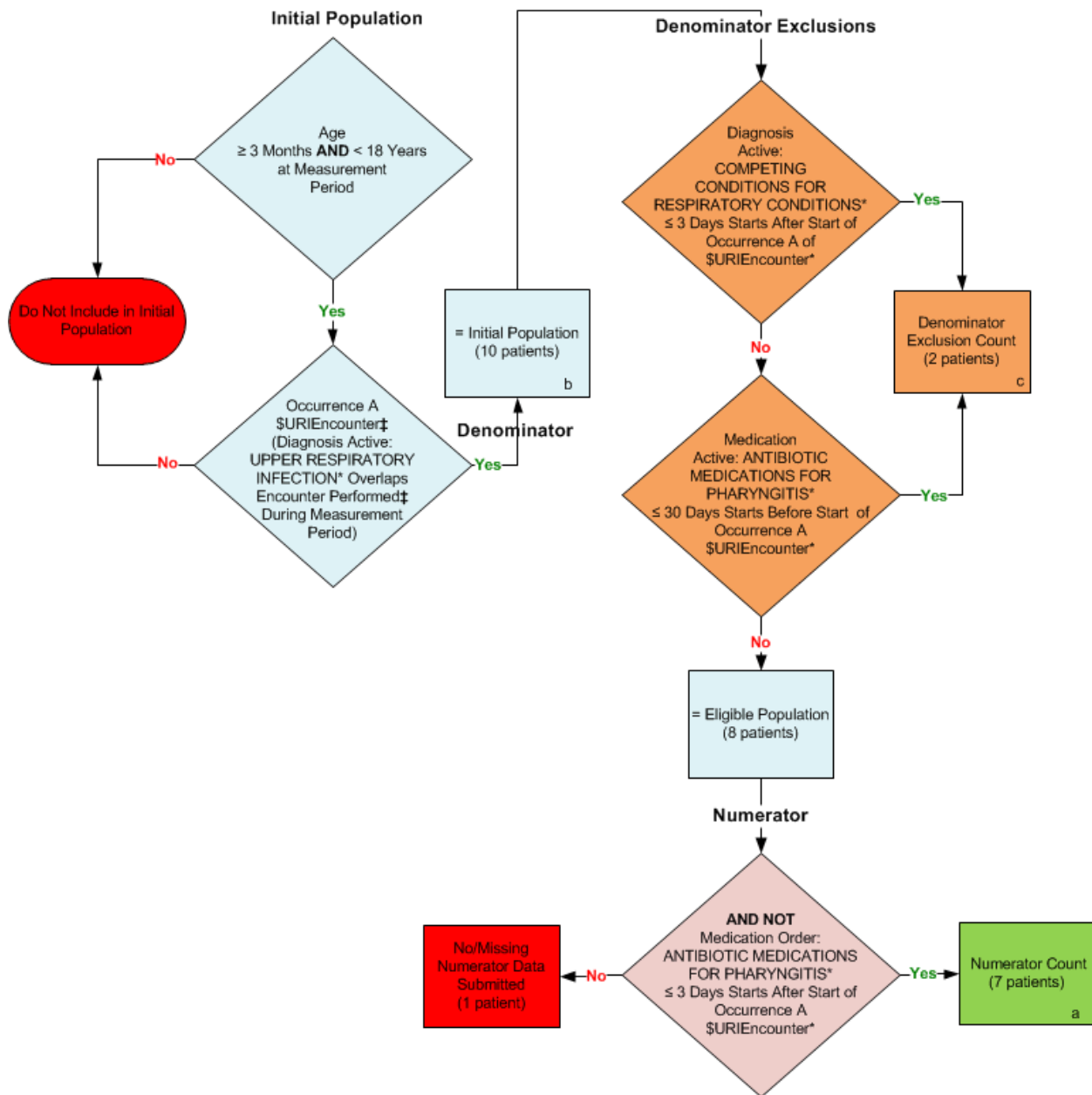


**2014 eCQM Flow**  
**Measure Identifier: CMS154v4**

NQF 0069: Appropriate Treatment for Children with Upper Respiratory Infection (URI)



\*Please refer to the specific section of the eCQM to identify the QDM data elements and associated value sets for use in reporting this eCQM.

† For a listing of appropriate encounters, please refer to the Population Criteria and associated value sets as specific data elements have not been listed.

**SAMPLE CALCULATION:**

**Performance Rate =**  

$$\frac{\text{Numerator (a=7 patients)}}{\text{Denominator (b=10 patients) - Denominator Exclusions (c=2 patients) - Denominator Exceptions (N/A)}} = 87.50\%$$

2014 eCQM Flows  
eCQM Identifier: CMS154v4

NQF 0069: Appropriate Treatment for Children with Upper Respiratory Infection (URI)

Please refer to the specific section of the eCQM to identify the Population Criteria and associated value sets for use in reporting this eCQM.

1. Start Initial Population
2. Check Age:
  - a. If the AGE greater than or equal to 3 months and less than 18 years at measurement period equals No, do not include in Initial Population. Stop Processing.
  - b. If the AGE greater than or equal to 3 months and less than 18 years at measurement period equals Yes, proceed to check Occurrence A \$URIEncounter.
3. Check Occurrence A \$URIEncounter:
  - a. If the Occurrence A \$URIEncounter (Diagnosis Active QDM data element, UPPER RESPIRATORY INFECTION, overlaps Encounter Performed QDM data element, OFFICE VISIT, or Encounter Performed QDM data element, EMERGENCY DEPARTMENT VISIT, or Encounter Performed QDM data element, PREVENTIVE CARE – INITIAL OFFICE VISIT, 0 TO 17, or Encounter Performed QDM data element, PREVENTIVE CARE – ESTABLISHED OFFICE VISIT, 0 TO17, or Encounter Performed QDM data element, HOSPITAL OBSERVATION CARE – INITIAL, or Encounter Performed QDM data element, FACE-TO-FACE INTERACTION during measurement period) equals Yes, include in the Initial Population and continue on to the Denominator.
  - b. If the Occurrence A \$URIEncounter (Diagnosis Active QDM data element, UPPER RESPIRATORY INFECTION, overlaps Encounter Performed QDM data element, OFFICE VISIT, or Encounter Performed QDM data element, EMERGENCY DEPARTMENT VISIT, or Encounter Performed QDM data element, PREVENTIVE CARE – INITIAL OFFICE VISIT, 0 TO 17, or Encounter Performed QDM data element, PREVENTIVE CARE – ESTABLISHED OFFICE VISIT, 0 TO17, or Encounter Performed QDM data element, HOSPITAL OBSERVATION CARE – INITIAL, or Encounter Performed QDM data element, FACE-TO-FACE INTERACTION during measurement period) equals No, do not include in Initial Population. Stop Processing.
4. Start Denominator
  - a. Denominator equals the Initial Population. Denominator is represented by Letter b in the sample calculation listed at the end of this document. Letter b equals 10 patients in the sample calculation.
5. Start Denominator Exclusions
6. Check Diagnosis Active:

- a. If the Diagnosis Active QDM data element, COMPETING CONDITIONS FOR RESPIRATORY CONDITIONS, less than or equal to 3 days starts after start of Occurrence A of \$URIEncounter (Diagnosis Active QDM data element, UPPER RESPIRATORY INFECTION, overlaps Encounter Performed QDM data element, OFFICE VISIT, or Encounter Performed QDM data element, EMERGENCY DEPARTMENT VISIT, or Encounter Performed QDM data element, PREVENTIVE CARE – INITIAL OFFICE VISIT, 0 TO 17, or Encounter Performed QDM data element, PREVENTIVE CARE – ESTABLISHED OFFICE VISIT, 0 TO 17, or Encounter Performed QDM data element, HOSPITAL OBSERVATION CARE – INITIAL, or Encounter Performed QDM data element, FACE-TO-FACE INTERACTION during measurement period) equals Yes, include in Denominator Exclusions count. Denominator Exclusion is represented by Letter c in the sample calculation listed at the end of this document. Letter c equals 2 patients in the sample calculation.
  - b. If the Diagnosis Active QDM data element, COMPETING CONDITIONS FOR RESPIRATORY CONDITIONS, less than or equal to 3 days starts after start of Occurrence A of \$URIEncounter (Diagnosis Active QDM data element, UPPER RESPIRATORY INFECTION, overlaps Encounter Performed QDM data element, OFFICE VISIT, or Encounter Performed QDM data element, EMERGENCY DEPARTMENT VISIT, or Encounter Performed QDM data element, PREVENTIVE CARE – INITIAL OFFICE VISIT, 0 TO 17, or Encounter Performed QDM data element, PREVENTIVE CARE – ESTABLISHED OFFICE VISIT, 0 TO 17, or Encounter Performed QDM data element, HOSPITAL OBSERVATION CARE – INITIAL, or Encounter Performed QDM data element, FACE-TO-FACE INTERACTION during measurement period) equals No, proceed to check Medication Active.
7. Check Medication Active:
- a. If the Medication Active QDM data element, ANTIBIOTIC MEDICATIONS FOR PHARYNGITIS, less than or equal to 30 days starts before start of Occurrence A of \$URIEncounter (Diagnosis Active QDM data element, UPPER RESPIRATORY INFECTION, overlaps Encounter Performed QDM data element, OFFICE VISIT, or Encounter Performed QDM data element, EMERGENCY DEPARTMENT VISIT, or Encounter Performed QDM data element, PREVENTIVE CARE – INITIAL OFFICE VISIT, 0 TO 17, or Encounter Performed QDM data element, PREVENTIVE CARE – ESTABLISHED OFFICE VISIT, 0 TO 17, or Encounter Performed QDM data element, HOSPITAL OBSERVATION CARE – INITIAL, or Encounter Performed QDM data element, FACE-TO-FACE INTERACTION during measurement period) equals Yes, include in Denominator Exclusions count. Denominator Exclusion is represented by Letter c in the sample calculation listed at the end of this document. Letter c equals 2 patients in the sample calculation.
  - b. If the Medication Active QDM data element, ANTIBIOTIC MEDICATIONS FOR PHARYNGITIS, less than or equal to 30 days starts before start of Occurrence A of \$URIEncounter (Diagnosis Active QDM data element, UPPER RESPIRATORY INFECTION, overlaps Encounter Performed QDM data element, OFFICE VISIT, or Encounter Performed QDM data element, EMERGENCY DEPARTMENT VISIT, or

Encounter Performed QDM data element, PREVENTIVE CARE – INITIAL OFFICE VISIT, 0 TO 17, or Encounter Performed QDM data element, PREVENTIVE CARE – ESTABLISHED OFFICE VISIT, 0 TO 17, or Encounter Performed QDM data element, HOSPITAL OBSERVATION CARE – INITIAL, or Encounter Performed QDM data element, FACE-TO-FACE INTERACTION during measurement period) equals No, proceed to Numerator.

8. Start Numerator

9. Check Medication Order:

- a. If AND NOT Medication Order QDM data element, ANTIBIOTIC MEDICATIONS FOR PHARYNGITIS, less than or equal to 3 days starts after start of Occurrence A of \$URI Encounter (Diagnosis Active QDM data element, UPPER RESPIRATORY INFECTION, overlaps Encounter Performed QDM data element, OFFICE VISIT, or Encounter Performed QDM data element, EMERGENCY DEPARTMENT VISIT, or Encounter Performed QDM data element, PREVENTIVE CARE – INITIAL OFFICE VISIT, 0 TO 17, or Encounter Performed QDM data element, PREVENTIVE CARE – ESTABLISHED OFFICE VISIT, 0 TO 17, or Encounter Performed QDM data element, HOSPITAL OBSERVATION CARE – INITIAL, or Encounter Performed QDM data element, FACE-TO-FACE INTERACTION during measurement period) equals Yes, include in Numerator Count. Numerator is represented by Letter a in the sample calculation listed at the end of this document. Letter a equals 7 patients in the sample calculation.
- b. If AND NOT Medication Order QDM data element, ANTIBIOTIC MEDICATIONS FOR PHARYNGITIS, less than or equal to 3 days starts after start of Occurrence A of \$URI Encounter (Diagnosis Active QDM data element, UPPER RESPIRATORY INFECTION, overlaps Encounter Performed QDM data element, OFFICE VISIT, or Encounter Performed QDM data element, EMERGENCY DEPARTMENT VISIT, or Encounter Performed QDM data element, PREVENTIVE CARE – INITIAL OFFICE VISIT, 0 TO 17, or Encounter Performed QDM data element, PREVENTIVE CARE – ESTABLISHED OFFICE VISIT, 0 TO 17, or Encounter Performed QDM data element, HOSPITAL OBSERVATION CARE – INITIAL, or Encounter Performed QDM data element, FACE-TO-FACE INTERACTION during measurement period) equals No, include in the No/Missing Data Submitted count. Stop Processing.

**SAMPLE CALCULATION:**

**Performance Rate =**

$$\frac{\text{Numerator (a=7 patients)}}{\text{Denominator (b=10 patients) – Denominator Exclusions (c=2 patients) – Denominator Exceptions (N/A)}} = 87.50\%$$