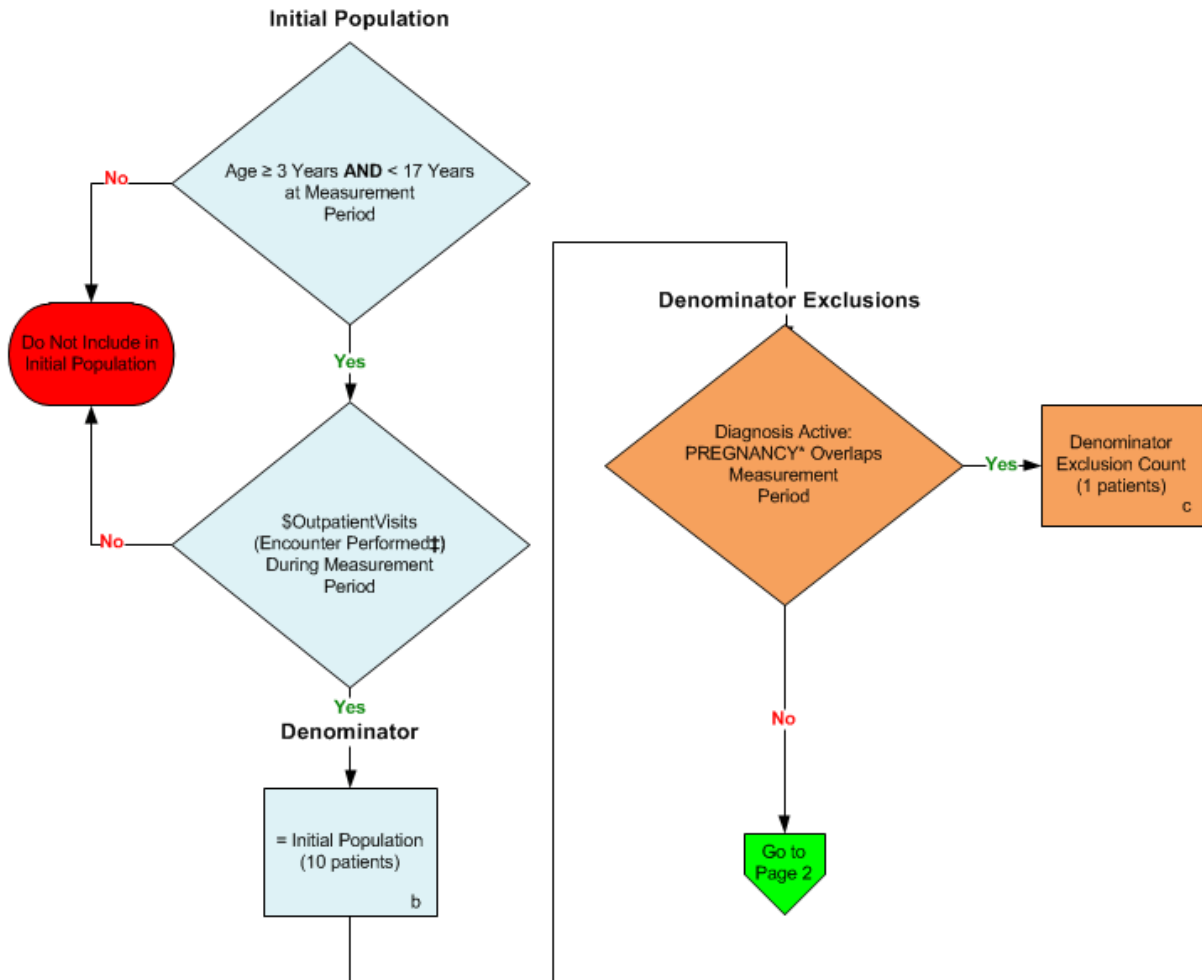


2014 eCQM Flow
Measure Identifier: CMS155v4

NQF 0024: Weight Assessment and Counseling for Nutrition and Physical Activity for Children and Adolescents

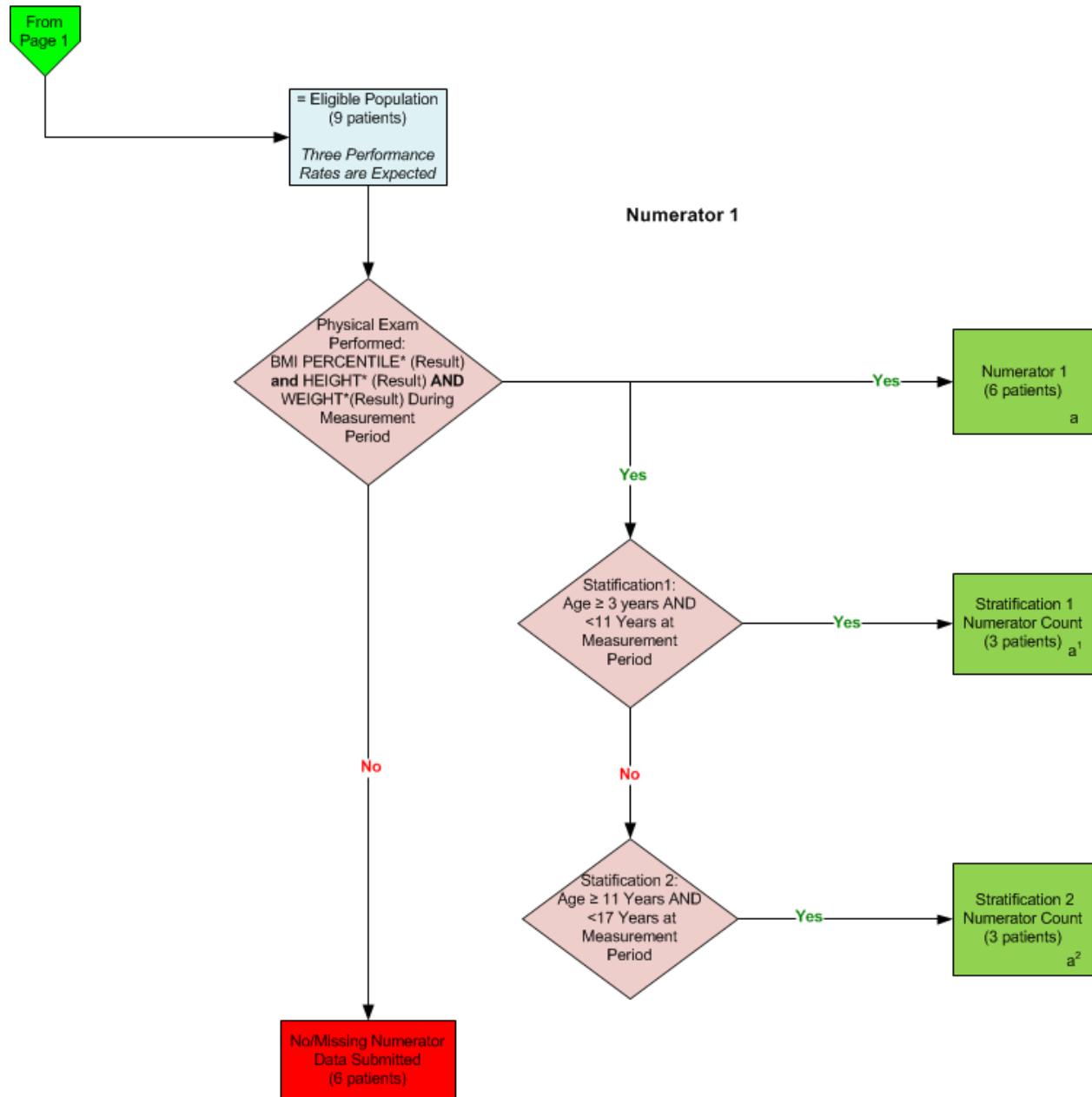
This eMeasure requires the reporting of nine Performance Rates



*Please refer to the specific section of the eCQM to identify the QDM data elements and associated value sets for use in reporting this eCQM.
 ‡ For a listing of appropriate encounters, please refer to the Population Criteria and associated value sets as specific data elements have not been listed.

2014 eCQM Flow
Measure Identifier: CMS155v4

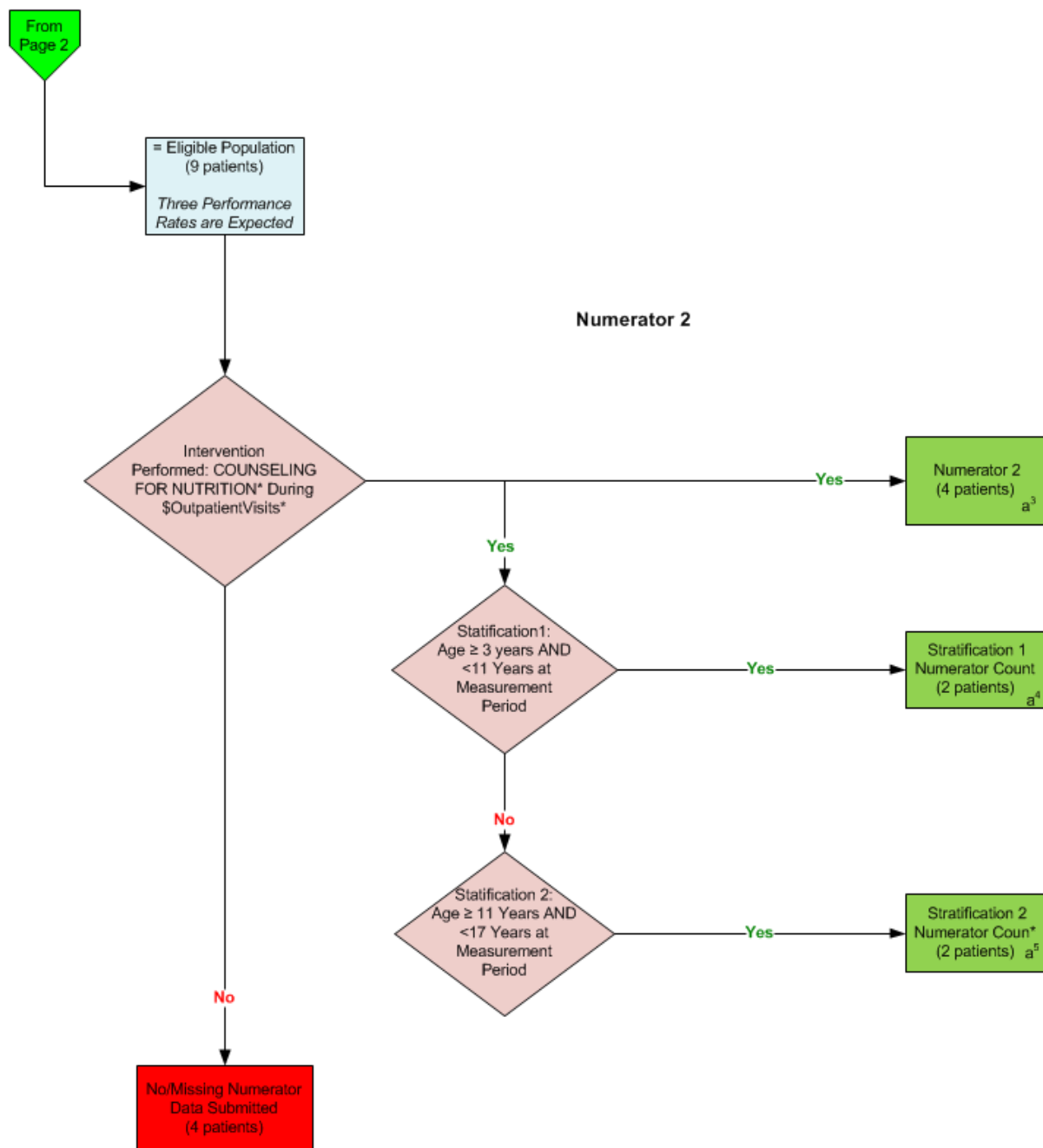
NQF 0024: Weight Assessment and Counseling for Nutrition and Physical Activity for Children and Adolescents



*Please refer to the specific section of the eCQM to identify the QDM data elements and associated value sets for use in reporting this eCQM.

2014 eCQM Flow
Measure Identifier: CMS155v4

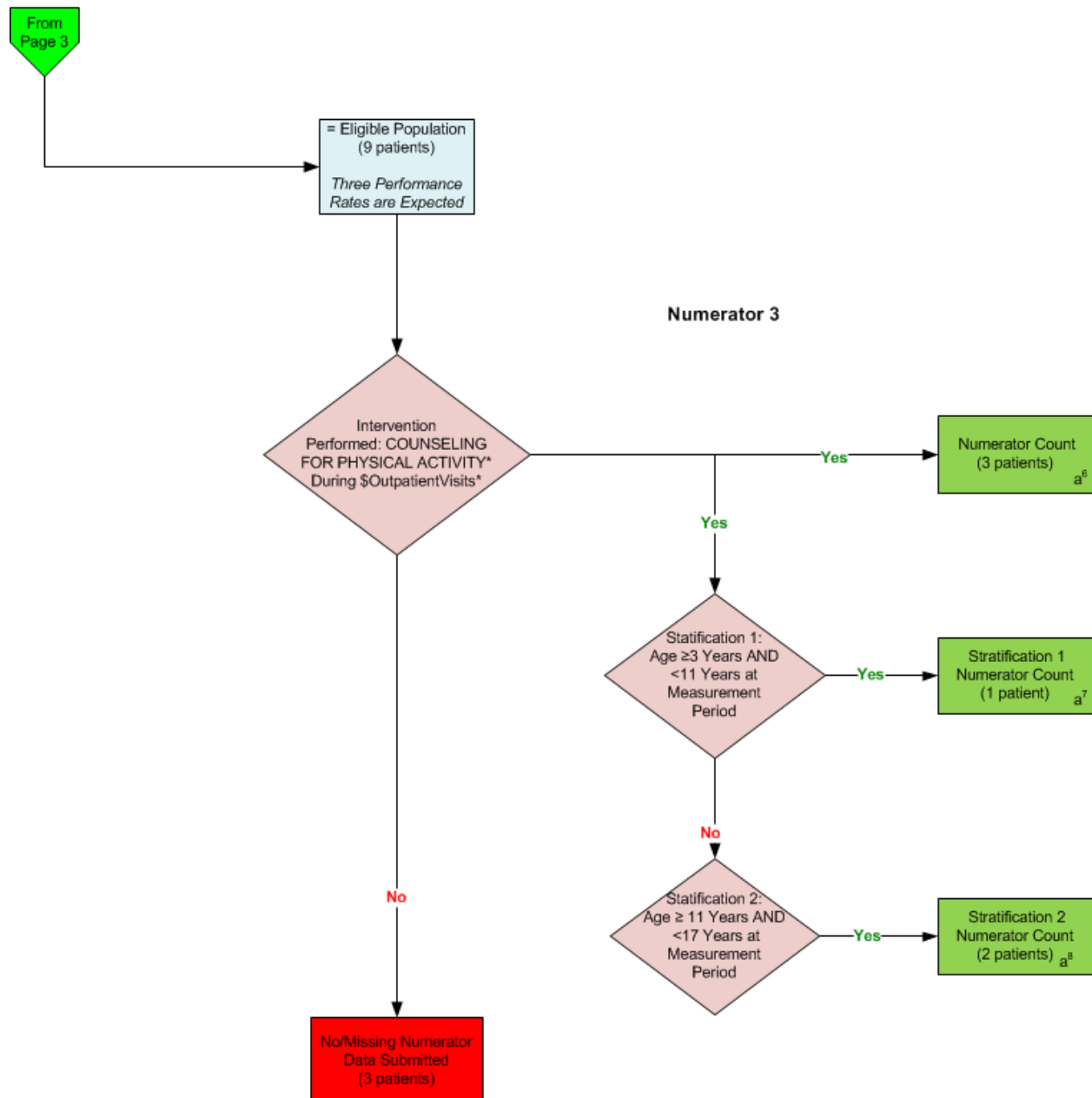
NQF 0024: Weight Assessment and Counseling for Nutrition and Physical Activity for Children and Adolescents



*Please refer to the specific section of the eCQM to identify the QDM data elements and associated value sets for use in reporting this eCQM.

2014 eCQM Flow
Measure Identifier: CMS155v4

NQF 0024: Weight Assessment and Counseling for Nutrition and Physical Activity for Children and Adolescents



*Please refer to the specific section of the eCQM to identify the QDM data elements and associated value sets for use in reporting this eCQM.

**2014 eCQM Flow
Measure Identifier: CMS155v4**

NQF 0024: Weight Assessment and Counseling for Nutrition and Physical Activity for Children and Adolescents

SAMPLE CALCULATION: Combination of Initial Population; Denominator; with Stratification - Numerator 1

Performance Rate =	
Numerator (a=6 patients)	= 66.67%
Denominator (b=10 patients) – Denominator Exclusions (c=1 patient) – Denominator Exceptions (N/A)	
Stratification 1	
Numerator (a ¹ =3 patients)	= 33.33%
Denominator (b=10 patients) – Denominator Exclusions (c=1 patient) – Denominator Exceptions (N/A)	
Stratification 2	
Numerator (a ² =3 patients)	= 33.33%
Denominator (b=10 patients) – Denominator Exclusions (c=1 patient) – Denominator Exceptions (N/A)	

SAMPLE CALCULATION: Combination of Initial Population; Denominator; with Stratification - Numerator 2

Performance Rate =	
Numerator (a ³ =4 patients)	= 44.44%
Denominator (b=10 patients) – Denominator Exclusions (c=1 patient) – Denominator Exceptions (N/A)	
Stratification 1	
Numerator (a ⁴ =2 patients)	= 22.22%
Denominator (b=10 patients) – Denominator Exclusions (c=1 patient) – Denominator Exceptions (N/A)	
Stratification 2	
Numerator (a ⁵ =2 patients)	= 22.22%
Denominator (b=10 patients) – Denominator Exclusions (c=2 patient) – Denominator Exceptions (N/A)	

SAMPLE CALCULATION: Combination of Initial Population; Denominator; with Stratification - Numerator 3

Performance Rate	
Numerator (a ⁶ =3 patients)	= 33.30%
Denominator (b=10 patients) – Denominator Exclusions (c=1 patient) – Denominator Exceptions (N/A)	
Stratification 1	
Numerator (a ⁷ =1 patients)	= 11.11%
Denominator (b=10 patients) – Denominator Exclusions (c=1 patient) – Denominator Exceptions (N/A)	
Stratification 2	
Numerator (a ⁸ =2 patients)	= 11.11%
Denominator (b=10 patients) – Denominator Exclusions (c=1 patient) – Denominator Exceptions (N/A)	

2014 eCQM Flows

Measure Identifier: CMS155v4

NQF 0024: Weight Assessment and Counseling for Nutrition and Physical Activity for Children and Adolescents

This eCQM requires the reporting of three Performance Rates

Please refer to the specific section of the eCQM to identify the Population Criteria and associated value sets for use in reporting this eCQM.

1. Start Initial Patient Population
2. Check Age:
 - a. If the AGE is greater than or equal to 3 years and less than 17 years at measurement period equals No, do not include in Initial Patient Population. Stop Processing.
 - b. If the AGE is greater than or equal to 3 years and less than 17 years at measurement period equals Yes, proceed to check \$OutpatientVisits Encounter Performed.
3. Check \$OutpatientVisits Encounter Performed:
 - a. If the \$Outpatient Visits Encounter Performed QDM data element, FACE-TO-FACE INTERACTION, QDM data element FACE-TO-FACE, QDM data element OFFICE VISITS, QDM data element PREVENTIVE CARE SERVICES-INDIVIDUAL COUNSELING, or QDM data element PREVENTIVE CARE-INITIAL OFFICE VISIT, 0 TO 17, or QDM data element PREVENTIVE CARE-ESTABLISHED OFFICE VISIT, 0 TO 17, or QDM data element, PREVENTIAL CARE-ESTABLISHED OFFICE VISIT, 0 TO 17, during measurement period equals Yes, include in the Initial Patient Population and continue on to the Denominator.
 - b. If the \$Outpatient Visits Encounter Performed QDM data element, FACE-TO-FACE INTERACTION, QDM data element FACE-TO-FACE, QDM data element OFFICE VISITS, QDM data element PREVENTIVE CARE SERVICES-INDIVIDUAL COUNSELING, or QDM data element PREVENTIVE CARE-INITIAL OFFICE VISIT, 0 TO 17, or QDM data element PREVENTIVE CARE-ESTABLISHED OFFICE VISIT, 0 TO 17, or QDM data element, PREVENTIAL CARE-ESTABLISHED OFFICE VISIT, 0 TO 17, during measurement period equals No, continue to next Encounter Performed.
4. Start Denominator
 - a. Denominator equals the Initial Patient Population. Denominator is represented by Letter b in the sample calculation listed at the end of this document. Letter b equals 10 patients in the sample calculation.
5. Start Denominator Exclusions
6. Check Diagnosis Active:
 - a. If the Diagnosis Active QDM data element, PREGNANCY, overlaps measurement period equals Yes, include in Denominator Exclusions count. Denominator Exclusion

- is represented by Letter c in the sample calculation listed at the end of this document. Letter c equals 1 patient in the sample calculation.
- b. If the Diagnosis Active QDM data element, PREGNANCY, overlaps measurement period equals No, proceed to Numerator 1.
7. Start Numerator 1 - (Performance Rate 1):
 8. Check Physical Exam Performed:
 - a. If the Physical Exam Performed QDM data element, BMI PERCENTILE (result), and QDM data element, HEIGHT (result), and QDM data element, WEIGHT (result) during measurement period equals Yes, include in Numerator 1 Count. Numerator is represented by Letter a in the sample calculation listed at the end of this document. Letter a equals 6 patients in the sample calculation. Continue on to Numerator 2 and Stratification Count #1.
 - b. If the Physical Exam Performed QDM data element, BMI PERCENTILE (result), and QDM data element, HEIGHT (result), and QDM data element, WEIGHT (result) during measurement period equals No, include in the No/Missing Data Submitted Count. Continue on to Numerator 2.
 9. Stratification #1:
 - a. If the AGE greater than or equal to 3 years AND less than 11 years at measurement period equals Yes, include in Stratification Numerator Count #1 Stratification 1 is represented as Letter a¹ in the sample calculation listed at the end of the document. Letter a¹ equals 3 patients.
 - b. If the AGE greater than or equal to 3 years AND less than 11 years at measurement period equals No, proceed to Stratification 2.
 10. Stratification #2:
 - a. If the AGE greater than or equal to 11 years AND less than 17 years at measurement period equals Yes, include in Stratification Numerator Count #2. Stratification 2 is represented as Letter a² in sample calculation listed at the end of the document. Letter a² equals 3 patients.
 - b. If the AGE greater than or equal to 11 years AND less than 17 years at measurement period equals No, proceed to Numerator 2.

SAMPLE CALCULATION: *Combination of Initial Population; Denominator; with Stratification - Numerator 1*

Performance Rate =	
Numerator (a=6 patients)	= 66.67%
Denominator (b=10 patients) – Denominator Exclusions (c=1 patient) – Denominator Exceptions (N/A)	
Stratification 1	
Numerator (a ¹ =3 patients)	= 33.33%
Denominator (b=10 patients) – Denominator Exclusions (c=1 patient) – Denominator Exceptions (N/A)	
Stratification 2	
Numerator (a ² =3 patients)	= 33.33%
Denominator (b=10 patients) – Denominator Exclusions (c=1 patient) – Denominator Exceptions (N/A)	

11. Start Numerator 2 - (Performance Rate 2):

12. Check Intervention Performed:

- a. If the Intervention Performed QDM data element, COUNSELING FOR NUTRITION, during \$Outpatient Visits (Encounter Performed QDM data element, FACE-TO-FACE INTERACTION, QDM data element FACE-TO-FACE, QDM data element OFFICE VISITS, QDM data element PREVENTIVE CARE SERVICES-INDIVIDUAL COUNSLEING, or QDM data element PREVENTIVE CARE-INITIAL OFFICE VISIT, 0 TO 17, or QDM data element PREVENTIVE CARE-ESTABLISHED OFFICE VISIT, 0 TO 17, or QDM data element, PREVENTIAL CARE-ESTABLISHED OFFICE VISIT, 0 TO 17, during measurement period) equals Yes, include in Numerator 2 Count. Numerator is represented by Letter a³ in the sample calculation listed at the end of this document. Letter a³ equals 4 patients in the sample calculation. Continue on to Numerator 3 and Stratification Count #1.
- b. If the Intervention Performed QDM data element, COUNSELING FOR NUTRITION, during \$Outpatient Visits (Encounter Performed QDM data element, FACE-TO-FACE INTERACTION, QDM data element FACE-TO-FACE, QDM data element OFFICE VISITS, QDM data element PREVENTIVE CARE SERVICES-INDIVIDUAL COUNSLEING, or QDM data element PREVENTIVE CARE-INITIAL OFFICE VISIT, 0 TO 17, or QDM data element PREVENTIVE CARE-ESTABLISHED OFFICE VISIT, 0 TO 17, or QDM data element, PREVENTIAL CARE-ESTABLISHED OFFICE VISIT, 0 TO 17, during measurement period) equals No, include in the No/Missing Data Submitted Count. Continue on to Numerator 3.

13. Stratification #1:

- a. If the AGE greater than or equal to 3 years AND less than 11 years at measurement period equals Yes, include in Stratification Numerator Count #1 Stratification 1 is represented as Letter a⁴ in the sample calculation listed at the end of the document. Letter a⁴ equals 2 patients.
- b. If the AGE greater than or equal to 3 years AND less than 11 years at measurement period equals No, proceed to Stratification 2.

14. Stratification #2:

- a. If the AGE greater than or equal to 11 years AND less than 17 years at measurement period equals Yes, include in Stratification Numerator Count #2. Stratification 2 is represented as Letter a⁵ in sample calculation listed at the end of the document. Letter a⁵ equals 2 patients.
- b. If the AGE greater than or equal to 11 years AND less than 17 years at measurement period equals No, proceed to Numerator 3.

SAMPLE CALCULATION: *Combination of Initial Population; Denominator; with Stratification - Numerator 2*

Performance Rate =

Numerator (a³=4 patients) = 44.44%
Denominator (b=10 patients) – Denominator Exclusions (c=1 patient) – Denominator Exceptions (N/A)

Stratification 1

Numerator (a⁴=2 patients) = 22.22%
Denominator (b=10 patients) – Denominator Exclusions (c=1 patient) – Denominator Exceptions (N/A)

Stratification 2

Numerator (a⁵=2 patients) = 22.22%
Denominator (b=10 patients) – Denominator Exclusions (c=2 patient) – Denominator Exceptions (N/A)

15. Check Numerator 3 – (Performance Rate 3):

16. Check Intervention Performed:

- a. If the Intervention Performed QDM data element, COUNSELING FOR PHYSICAL ACTIVITY, during \$Outpatient Visits (Encounter Performed QDM data element, FACE-TO-FACE INTERACTION, QDM data element FACE-TO-FACE, QDM data element OFFICE VISITS, QDM data element PREVENTIVE CARE SERVICES-INDIVIDUAL COUNSLEING, or QDM data element PREVENTIVE CARE-INITIAL OFFICE VISIT, 0 TO 17, or QDM data element PREVENTIVE CARE-ESTABLISHED OFFICE VISIT, 0 TO 17, or QDM data element, PREVENTIAL CARE-ESTABLISHED OFFICE VISIT, 0 TO 17, during measurement period) equals Yes, include in Numerator 3 Count. Numerator is represented by Letter a⁶ in the sample calculation listed at the end of this document. Letter a⁶ equals 3 patients in the sample calculation. Continue on to Numerator 3 and Stratification Count #1.
- b. If the Intervention Performed QDM data element, COUNSELING FOR PHYSICAL ACTIVITY, during \$Outpatient Visits (Encounter Performed QDM data element, FACE-TO-FACE INTERACTION, QDM data element FACE-TO-FACE, QDM data element OFFICE VISITS, QDM data element PREVENTIVE CARE SERVICES-INDIVIDUAL COUNSLEING, or QDM data element PREVENTIVE CARE-INITIAL OFFICE VISIT, 0 TO 17, or QDM data element PREVENTIVE CARE-ESTABLISHED OFFICE VISIT, 0 TO 17, or QDM data element, PREVENTIAL CARE-ESTABLISHED OFFICE VISIT, 0 TO 17, during measurement period) equals No, include in the No/Missing Data Submitted Count. Stop Processing.

17. Stratification #1:

- a. If the AGE greater than or equal to 3 years AND less than 11 years at measurement period equals Yes, include in Stratification Numerator Count #1 Stratification 1 is represented as Letter a⁷ in the sample calculation listed at the end of the document. Letter a⁷ equals 1 patient.
- b. If the AGE greater than or equal to 3 years AND less than 11 years at measurement period equals No, proceed to Stratification 2.

18. Stratification #2:

- a. If the AGE greater than or equal to 11 years AND less than 17 years at measurement period equals Yes, include in Stratification Numerator Count #2. Stratification 2 is represented as Letter a⁸ in sample calculation listed at the end of the document. Letter a⁸ equals 2 patients.
- b. If the AGE greater than or equal to 11 years AND less than 17 years at measurement period equals No, proceed to Numerator 3.

SAMPLE CALCULATION: *Combination of Initial Population; Denominator; with Stratification - Numerator 3*

Performance Rate

Numerator (a⁶=3 patients) _____ = 33.30%
Denominator (b=10 patients) – Denominator Exclusions (c=1 patient) – Denominator Exceptions (N/A)

Stratification 1

Numerator (a⁷=1 patients) _____ = 11.11%
Denominator (b=10 patients) – Denominator Exclusions (c=1 patient) – Denominator Exceptions (N/A)

Stratification 2

Numerator (a⁸=2 patients) _____ = 11.11%
Denominator (b=10 patients) – Denominator Exclusions (c=1 patient) – Denominator Exceptions (N/A)