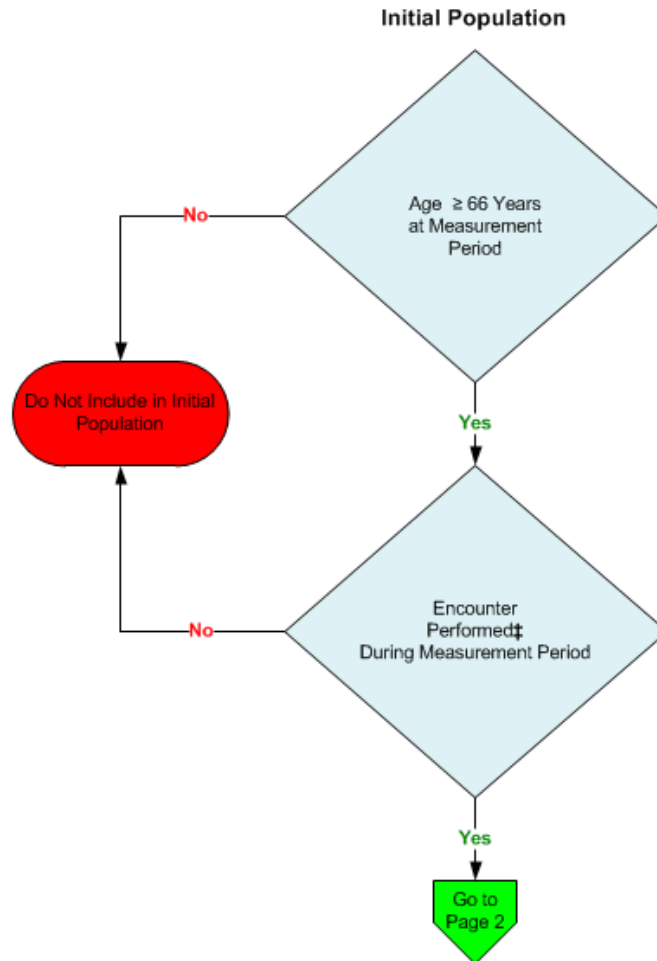


**2014 eCQM Flow**  
**Measure Identifier: CMS156v4**

NQF 0022: Use of High-Risk Medications in the Elderly

*This eCQM requires the reporting of two Performance Rates*

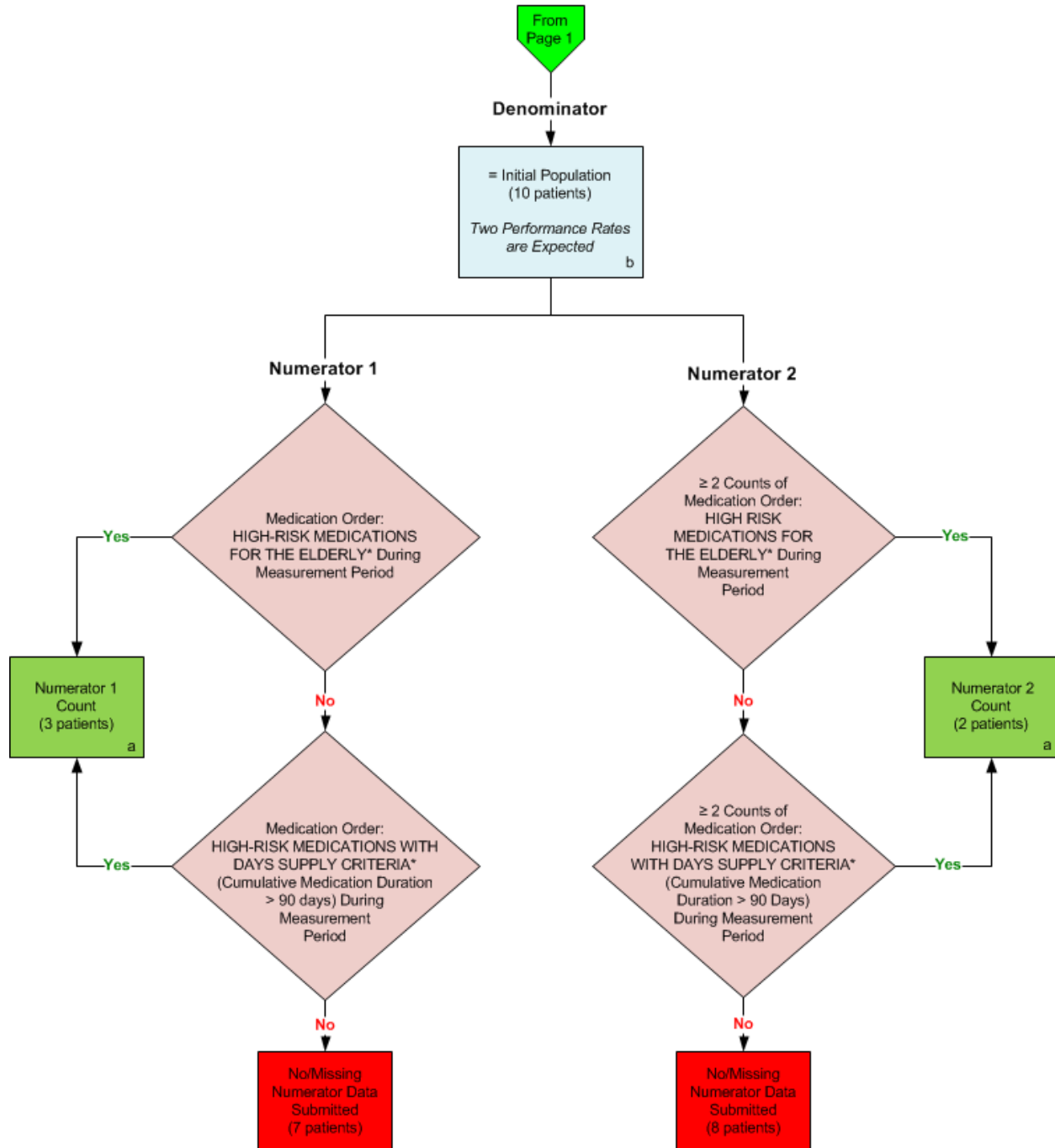


\*Please refer to the specific section of the HQMF for this eCQM to identify the QDM data elements and associated value sets for use in reporting this eCQM.

‡ For a listing of appropriate encounters, please refer to the Population Criteria and associated value sets as specific data elements have not been listed.

**2014 eQMF Flow**  
**Measure Identifier: CMS156v4**

NQF 0022: Use of High-Risk Medications in the Elderly



\*Please refer to the specific section of the HQMF for this eMeasure to identify the QDM data elements and associated value sets for use in reporting this eMeasure.

**2014 eCQM Flow**  
**Measure Identifier: CMS156v4**  
NQF 0022: Use of High-Risk Medications in the Elderly

**SAMPLE CALCULATION:** *Combination of Initial Population; Denominator; Numerator 1*

**Performance Rate\*\* =**

$$\frac{\text{Numerator (a = 3 patients)}}{\text{Denominator (b=10 patients) – Denominator Exclusions (N/A) – Denominator Exceptions (N/A)}} = 30.00\%$$

\*\*For performance, a lower rate indicates better performance.

**SAMPLE CALCULATION:** *Combination of Initial Population; Denominator; Numerator 2*

**Performance Rate\*\* =**

$$\frac{\text{Numerator (a = 2 patients)}}{\text{Denominator (b=10 patients) – Denominator Exclusions (N/A) – Denominator Exceptions (N/A)}} = 20.00\%$$

\*\*For performance, a lower rate indicates better performance.

2014 eCQM Flows  
Measure Identifier: CMS156v4  
NQF 0022: Use of High-Risk Medications in the Elderly  
*This eCQM requires the reporting of two Performance Rates.*

Please refer to the specific section of the eCQM to identify the Population Criteria and associated value sets for use in reporting this eCQM.

1. Start Initial Population
2. Check Age:
  - a. If the AGE greater than or equal to 66 years of age at measurement period equals No, do not include in Initial Population and stop processing.
  - b. If the AGE greater than or equal to 66 years of age at measurement period equals Yes, continue processing and proceed to check Encounter Performed.
3. Check Encounter Performed:
  - a. If the Encounter Performed QDM data element, OFFICE VISIT, during measurement period equals Yes, include in the Initial Population and proceed to Denominator.
  - b. If the Encounter Performed QDM data element, OFFICE VISIT, during measurement period equals No, proceed to check next Encounter Performed.
  - c. If the Encounter Performed QDM data element, FACE-TO-FACE INTERACTION, during measurement period equals Yes, include in the Initial Population and proceed to Denominator.
  - d. If the Encounter Performed QDM data element, FACE-TO-FACE INTERACTION, during measurement period equals No, proceed to check next Encounter Performed.
  - e. If the Encounter Performed QDM data element, PREVENTIVE CARE SERVICES – ESTABLISHED OFFICE VISIT, 18 AND UP, during measurement period equals Yes, include in the Initial Population and proceed to Denominator.
  - f. If the Encounter Performed QDM data element, PREVENTIVE CARE SERVICES – ESTABLISHED OFFICE VISIT, 18 AND UP, during measurement period equals No, proceed to check next Encounter Performed.
  - g. If the Encounter Performed QDM data element, PREVENTIVE CARE SERVICES – INITIAL OFFICE VISIT, 18 AND UP, during measurement period equals Yes, include in the Initial Population and proceed to Denominator.
  - h. If the Encounter Performed QDM data element, PREVENTIVE CARE SERVICES – INITIAL OFFICE VISIT, 18 AND UP, during measurement period equals No, proceed to check next Encounter Performed.
  - i. If the Encounter Performed QDM data element, ANNUAL WELLNESS VISIT, during measurement period equals Yes, include in the Initial Population and proceed to Denominator.
  - j. If the Encounter Performed QDM data element, ANNUAL WELLNESS VISIT, during measurement period equals No, proceed to check next Encounter Performed.

- k. If the Encounter Performed QDM data element, HOME HEALTHCARE SERVICES, during measurement period equals Yes, include in the Initial Population and proceed to Denominator.
  - l. If the Encounter Performed QDM data element, HOME HEALTHCARE SERVICES, during measurement period equals No, do not include in Initial Population and stop processing.
4. Start Denominator
- a. Denominator equals the Initial Population. Denominator is represented by the Letter b in the sample calculation listed at the end of this document. Letter b equals 10 patients in the sample calculation.
5. Start Numerator 1
6. Check Medication Order:
- a. If the Medication Order QDM data element, HIGH RISK MEDICATIONS FOR THE ELDERLY, during measurement period equals Yes, include in Numerator count. Numerator is represented by the Letter a in the sample calculation listed at the end of this document. Letter a equals 3 patients in the sample calculation. Proceed to Numerator 2.
  - b. If the Medication Order QDM data element, HIGH RISK MEDICATIONS FOR THE ELDERLY, during measurement period equals No, proceed to check Medication Order.
7. Check Medication Order:
- a. If the Medication Order QDM data element, HIGH-RISK MEDICATIONS WITH DAYS SUPPLY CRITERIA (cumulative medication duration greater than 90 days), during measurement period equals Yes, include in Numerator count. Numerator is represented by the Letter a in the sample calculation listed at the end of this document. Letter a equals 3 patients in the sample calculation. Proceed to Numerator 2.
  - b. If the Medication Order QDM data element, HIGH-RISK MEDICATIONS WITH DAYS SUPPLY CRITERIA (cumulative medication duration greater than 90 days), during measurement period equals No, include in the No/Missing Numerator Data Submitted count and stop processing for Numerator 1 and proceed to Numerator 2.
8. Start Numerator 2
9. Check Medication Order:
- a. If the Medication Order count greater than or equal to 2 of QDM data element, HIGH RISK MEDICATIONS FOR THE ELDERLY, during measurement period equals Yes, include in Numerator count. Numerator is represented by the Letter a in the sample calculation listed at the end of this document. Letter a equals 2 patients in the sample calculation.

- b. If the Medication Order count greater than or equal to 2 of QDM data element, HIGH RISK MEDICATIONS FOR THE ELDERLY, during measurement period equals No, check Medication Order.

10. Check Medication Order:

- a. If the Medication Order count greater than or equal to 2 of QDM data element, HIGH-RISK MEDICATIONS WITH DAYS SUPPLY CRITERIA (cumulative medication duration greater than 90 days), greater than or equal to 2 during measurement period equals Yes, include in Numerator count. Numerator is represented by the Letter a in the sample calculation listed at the end of this document. Letter a equals 2 patients in the sample calculation.
- b. If the Medication Order count greater than or equal to 2 of QDM data element, HIGH-RISK MEDICATIONS WITH DAYS SUPPLY CRITERIA (cumulative medication duration greater than 90 days), greater than or equal to 2 during measurement period equals No, include in the No/Missing Numerator Data Submitted count. Stop processing.

**SAMPLE CALCULATION:** *Combination of Initial Population; Denominator; Numerator 1*

**Performance Rate\*\* =**

$$\frac{\text{Numerator (a = 3 patients)}}{\text{Denominator (b = 10 patients) - Denominator Exclusions (N/A) - Denominator Exceptions (N/A)}} = 30.00\%$$

\*\*For performance, a lower rate indicates better performance.

**SAMPLE CALCULATION:** *Combination of Initial Population; Denominator; Numerator 2*

**Performance Rate\*\* =**

$$\frac{\text{Numerator (a = 2 patients)}}{\text{Denominator (b = 10 patients) - Denominator Exclusions (N/A) - Denominator Exceptions (N/A)}} = 20.00\%$$

\*\*For performance, a lower rate indicates better performance.