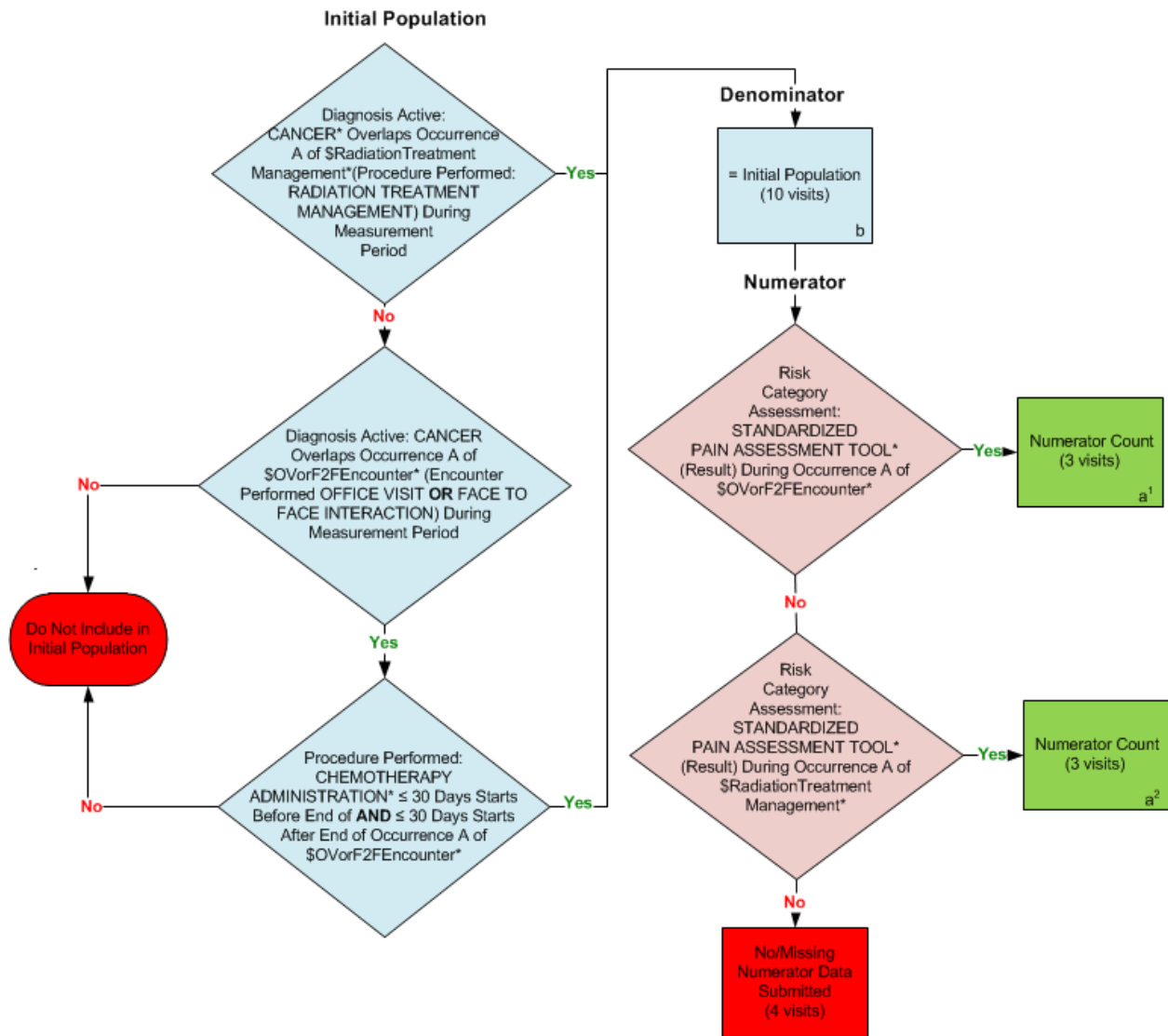


2014 eCQM Flow
Measure Identifier: CMS157v4

NQF 0384: Oncology: Medical and Radiation – Pain Intensity Quantified



*Please refer to the specific section of the eCQM to identify the QDM data elements and associated value sets for use in reporting this eCQM.

SAMPLE CALCULATION:

Performance Rate =

$$\frac{\text{Numerator (a}^1 + \text{a}^2 = 6 \text{ visits)}}{\text{Denominator (b=10 visits) - Denominator Exclusions (N/A) - Denominator Exceptions (N/A)}} = 60.00\%$$

2014 eCQM Flows

Measure Identifier: CMS157v4

NQF 0384: Oncology: Medical and Radiation – Pain Intensity Quantified

Please refer to the specific section of the eCQM to identify the Population Criteria and associated value sets for use in reporting this eCQM.

1. Start Initial Population
2. Check Diagnosis Active:
 - a. If the Diagnosis Active QDM data element, CANCER, overlaps Occurrence A of \$RadiationTreatmentManagement (QMD Data Element Procedure Performed: RADIATION TREATMENT MANAGEMENT) during measurement period equals No, go to check Diagnosis Active.
 - b. If the Diagnosis Active QDM data element, CANCER, overlaps Occurrence A of \$RadiationTreatmentManagement (QMD Data Element Procedure Performed: RADIATION TREATMENT MANAGEMENT) during measurement period equals Yes, continue on to the Denominator.
3. Check Diagnosis Active:
 - a. If the Diagnosis Active QDM data element, CANCER, overlaps Occurrence A of \$OVorF2FEncounter (Encounter Performed QDM data element, OFFICE VISIT, or FACE-TO-FACE INTERACTION during measurement period equals Yes, proceed to check Procedure Performed.
 - b. If the Diagnosis Active QDM data element, CANCER, overlaps Occurrence A of \$OVorF2FEncounter (Encounter Performed QDM data element, OFFICE VISIT, or FACE-TO-FACE INTERACTION) during measurement period equals No, do not include in Initial Population. Stop Processing.
4. Check Procedure Performed:
 - a. If the Procedure Performed QDM data element, CHEMOTHERAPY ADMINISTRATION, less than or equal to 30 days starts before end of AND less than or equal to 30 days starts after end of Occurrence A \$OVorF2FEncounter (Encounter Performed QDM data element, OFFICE VISIT, or FACE-TO-FACE INTERACTION) during measurement period, equals Yes, continue on to the Denominator.
 - b. If the Procedure Performed QDM data element, CHEMOTHERAPY ADMINISTRATION, less than or equal to 30 days starts before end of AND less than or equal to 30 days starts after end of Occurrence A \$OVorF2FEncounter (Encounter Performed QDM data element, OFFICE VISIT, or FACE-TO-FACE INTERACTION) during measurement period, equals No, do not include in Initial Population. Stop Processing.
5. Start Denominator

- a. Denominator equals the Initial Population. Denominator is represented by Letter b in the sample calculation listed at the end of this document. Letter b equals 10 patients in the sample calculation.
6. Start Numerator
7. Check Risk Category Assessment:
 - a. If the Risk Category Assessment QDM data element, STANDARDIZED PAIN ASSESSMENT TOOL (result), during Occurrence A of \$OVorF2FEncounter (Encounter Performed QDM data element, OFFICE VISIT, or FACE-TO-FACE INTERACTION during measurement period), equals Yes, include in Numerator Count. Numerator is represented by Letter a¹ in the sample calculation listed at the end of this document. Letter a¹ equals 3 patients in the sample calculation.
 - b. If the Risk Category Assessment QDM data element, STANDARDIZED PAIN ASSESSMENT TOOL (result), during Occurrence A of \$OVorF2FEncounter (Encounter Performed QDM data element, OFFICE VISIT, or FACE-TO-FACE INTERACTION during measurement period), equals No, proceed to check Risk Category Assessment.
8. Check Risk Category Assessment:
 - a. If the Risk Category Assessment QDM data element, STANDARDIZED PAIN ASSESSMENT TOOL (result), during Occurrence A of \$RadiationTreatmentManagement (QMD Data Element Procedure Performed: Radiation Treatment Management) during measurement period, equals Yes, include in Numerator Count. Numerator is represented by letter a² in the sample calculation listed at the end of this document. Letter a² equals 3 patients in the sample calculation.
 - b. If the Risk Category Assessment QDM data element, STANDARDIZED PAIN ASSESSMENT TOOL (result), during Occurrence A of \$RadiationTreatmentManagement (QMD Data Element Procedure Performed: Radiation Treatment Management during measurement period), equals No, include in No/Missing Numerator Data Submitted. Stop Processing.

SAMPLE CALCULATION:

Performance Rate =

$$\frac{\text{Numerator (a}^1 + \text{a}^2 = 6 \text{ visits)}}{\text{Denominator (b=10 visits) - Denominator Exclusions (N/A) - Denominator Exceptions (N/A)}} = 60.00\%$$