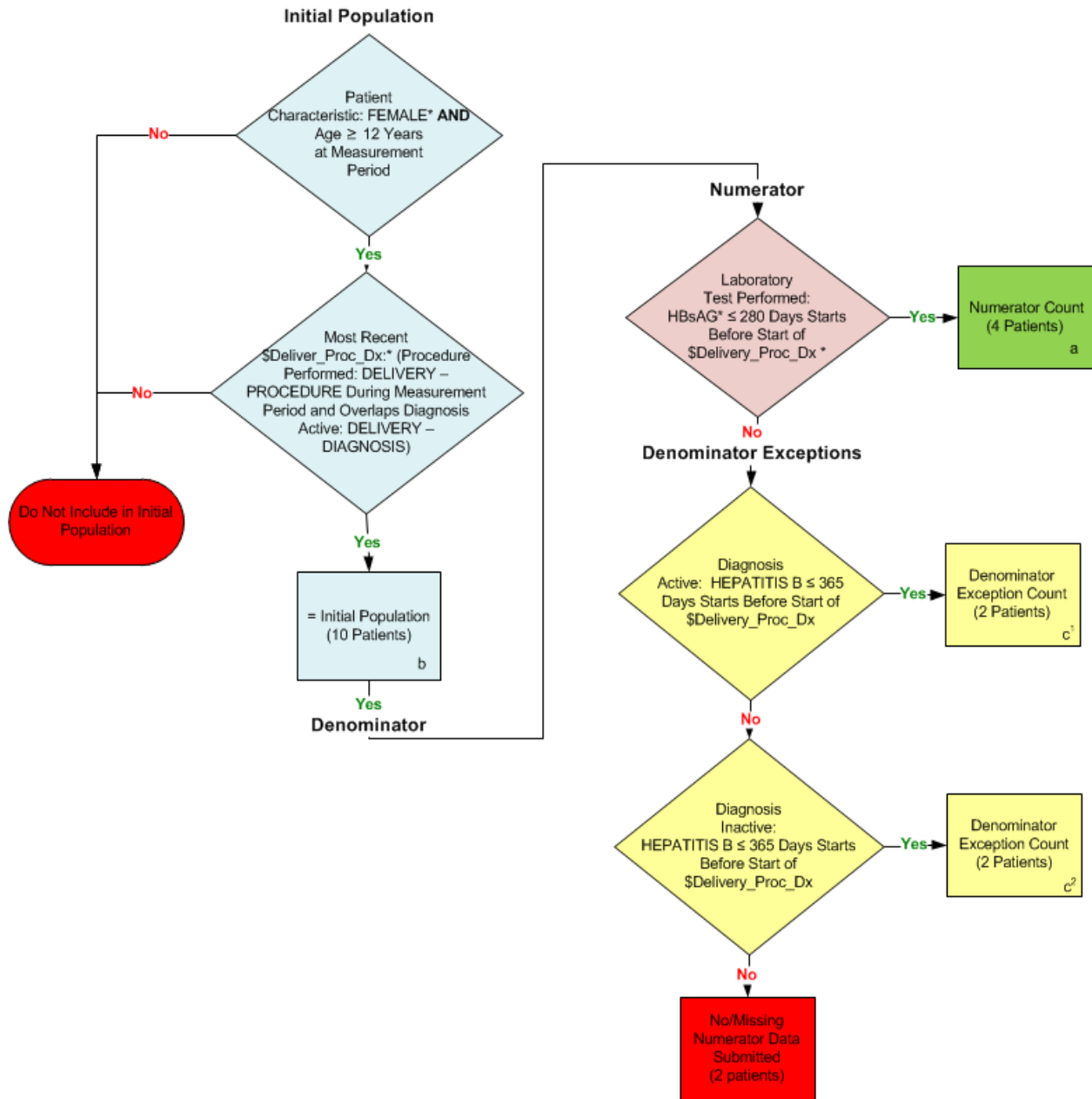


**2014 eCQM Flow**  
**Measure Identifier: CMS158v4**  
Pregnant Women that had HBsAg Testing



\*Please refer to the specific section of the eCQM to identify the QDM data elements and associated value sets for use in reporting this eCQM.

**SAMPLE CALCULATION:**

**Performance Rate =**

$$\frac{\text{Numerator (a=4 Patients)}}{\text{Denominator (b=10 Patients) – Denominator Exclusions (N/A) – Denominator Exceptions (c¹ + c²=4)}} = 66.67\%$$

2014 eCQM Flows  
Measure Identifier: CMS158v4  
NQF 0608: Pregnant Women Who Had HBsAg Testing

Please refer to the specific section of the eCQM to identify the Population Criteria and associated value sets for use in reporting this eCQM.

1. Start Initial Population
2. Check Patient Characteristic Sex and Age:
  - a. If FEMALE and AGE, greater than or equal to 12 years at measurement period, equals No, do not include in Initial Population. Stop Processing.
  - b. If FEMALE and AGE, greater than or equal to 12 years at measurement period, equals Yes, proceed to check Most Recent Procedure Performed.
3. Check Most Recent \$Delivery\_Proc\_Dx:
  - a. If the Most Recent \$Delivery\_Proc\_Dx (QDM data element Procedure Performed, DELIVERY - PROCEDURE, during measurement period and overlaps QDM data Element Diagnosis Active: DELIVERY – DIAGNOSIS) equals Yes, proceed to Denominator.
  - b. If the Most Recent \$Delivery\_Proc\_Dx (QDM data element Procedure Performed, DELIVERY - PROCEDURE, during measurement period and overlaps QDM data Element Diagnosis Active: DELIVERY – DIAGNOSIS) equals No, do not include in Initial Population. Stop Processing.
4. Start Denominator
  - a. Denominator equals the Initial Population. Denominator is represented by Letter b in the sample calculation listed at the end of this document. Letter b equals 10 patients in the sample calculation.
5. Start Numerator
6. Check Laboratory Test Performed:
  - a. If the Laboratory Test Performed QDM data element, HBSAG, less than or equal to 280 days starts before start of \$Delivery\_Proc\_Dx ( Most Recent QDM data element, DELIVERY - PROCEDURE, during measurement period and overlaps QDM data Element Diagnosis Active: DELIVERY – DIAGNOSIS), equals, Yes, include in Numerator Count. Numerator is represented by Letter a in the sample calculation listed at the end of this document. Letter a equals 4 patients in the sample calculation.
  - b. If the Laboratory Test Performed QDM data element, HBSAG, less than or equal to 280 days starts before start of \$Delivery\_Proc\_Dx ( Most Recent QDM data element, DELIVERY - PROCEDURE, during measurement period and overlaps QDM data Element Diagnosis Active: DELIVERY – DIAGNOSIS), equals, No, proceed to Denominator Exceptions.
7. Start Denominator Exceptions

8. Check Diagnosis Active:

- a. If the Diagnosis Active QDM data element, HEPATITIS B, less than or equal to 365 days starts before start of \$Delivery\_Proc\_Dx (Most Recent QDM data element, DELIVERY - PROCEDURE, during measurement period and overlaps QDM data Element Diagnosis Active: DELIVERY – DIAGNOSIS), equals Yes, include in Denominator Exceptions count. Denominator Exception is represented by Letter c1 in the sample calculation listed at the end of this document. Letter c1 equals 2 patients in the sample calculation.
- b. If the Diagnosis Active QDM data element, HEPATITIS B, less than or equal to 365 days starts before start of \$Delivery\_Proc\_Dx (Most Recent QDM data element, DELIVERY - PROCEDURE, during measurement period and overlaps QDM data Element Diagnosis Active: DELIVERY – DIAGNOSIS), equals No, proceed to check Diagnosis Inactive.

9. Check Diagnosis Inactive:

- a. If the Diagnosis Inactive QDM data element, HEPATITIS B, less than or equal to 365 days starts before start \$Delivery\_Proc\_Dx (Most Recent QDM data element, DELIVERY - PROCEDURE, during measurement period and overlaps QDM data Element Diagnosis Active: DELIVERY – DIAGNOSIS), equals Yes, include in Denominator Exceptions count. Denominator Exception is represented by Letter c2 in the sample calculation listed at the end of this document. Letter c2 equals 2 patients in the sample calculation.
- b. If the Diagnosis Inactive QDM data element, HEPATITIS B, less than or equal to 365 days starts before start of \$Delivery\_Proc\_Dx (Most Recent QDM data element, DELIVERY - PROCEDURE, during measurement period and overlaps QDM data Element Diagnosis Active: DELIVERY – DIAGNOSIS), equals No, include in the No/Missing Data Submitted count. Stop Processing.

**SAMPLE CALCULATION:**

**Performance Rate =**

$$\frac{\text{Numerator (a=4 Patients)}}{\text{Denominator (b=10 Patients) - Denominator Exclusions (N/A) - Denominator Exceptions (c^1 + c^2=4)}} = 66.67\%$$