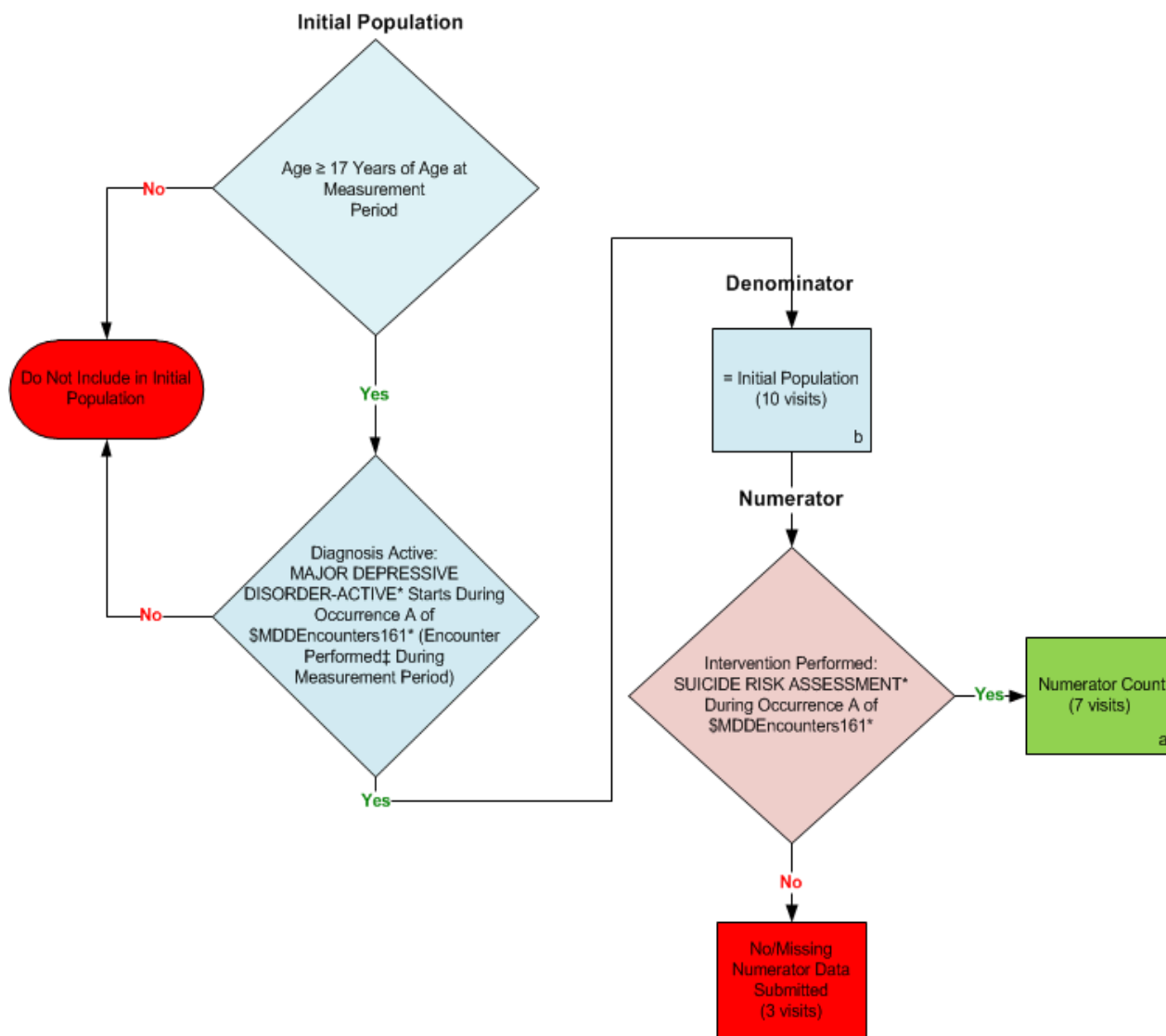


**2014 eCQM Flow**  
**Measure Identifier: CMS161v4**  
 NQF 0104: Adult Major Depressive Disorder (MDD): Suicide Risk Assessment



\*Please refer to the specific section of the eCQM to identify the QDM data elements and associated value sets for use in reporting this eCQM.

‡ For a listing of appropriate encounters, please refer to the Population Criteria and associated value sets as specific data elements have not been listed.

**SAMPLE CALCULATION:**

**Performance Rate =**

$$\frac{\text{Numerator (a = 7 visits)}}{\text{Denominator (b = 10 visits) - Denominator Exclusions (N/A) - Denominator Exceptions (N/A)}} = 70.00\%$$

2014 eCQM Flows  
Measure Identifier: CMS161v4  
NQF 0104: Major Depressive Disorder (MDD): Suicide Risk Assessment

Please refer to the specific section of the eCQM to identify the Population Criteria and associated value sets for use in reporting this eCQM.

1. Start Initial Population
2. Check Age:
  - a. If the AGE greater than or equal to 17 years of age at measurement period equals No, do not include in Initial Population. Stop Processing.
  - b. If the AGE greater than or equal to 17 years of age at measurement period equals Yes continue processing and proceed to check Diagnosis Active.
3. Check Diagnosis Active:
  - a. If the Diagnosis Active QDM data element, MAJOR DEPRESSIVE DISORDER-ACTIVE, starts during Occurrence A of \$MDDEncounters161 (Encounter Performed QDM data element Psych Visit – diagnostic evaluation, or Psych Visit – Psychotherapy, or EMERGENCY DEPARTMENT VISIT, or OFFICE VISIT, or OUTPATIENT CONSULTATION, or PSYCHOANALYSIS, or FACE-TO-FACE INTERACTION, during the measurement period) equals Yes, include in the Initial Population and proceed to Denominator.
  - b. If the Diagnosis Active QDM data element, MAJOR DEPRESSIVE DISORDER-ACTIVE, starts during Occurrence A of \$MDDEncounters161 (Encounter Performed QDM data element Psych Visit – diagnostic evaluation, or Psych Visit – Psychotherapy, or EMERGENCY DEPARTMENT VISIT, or OFFICE VISIT, or OUTPATIENT CONSULTATION, or PSYCHOANALYSIS, or FACE-TO-FACE INTERACTION, during the measurement period) equals No, do not include in initial population.
4. Start Denominator
  - a. Denominator equals the Initial Population. Denominator is represented by the Letter b in the sample calculation listed at the end of this document. Letter b equals 10 patients in the sample calculation.
5. Start Numerator
6. Check Intervention Performed:
  - a. If the Intervention Performed QDM data element SUICIDE RISK ASSESSMENT during Occurrence A of \$MDDEncounters161 (Encounter Performed QDM data element PSYCH VISIT – DIAGNOSTIC EVALUATION, or PSYCH VISIT – PSYCHOTHERAPY, or EMERGENCY DEPARTMENT VISIT, or OFFICE VISIT, or OUTPATIENT CONSULTATION, or PSYCHOANALYSIS, or FACE-TO-FACE INTERACTION), equals Yes, include in the Numerator count. The Numerator is represented by the Letter a in the sample calculation listed at the end of this document. Letter a equals 7 patients in the sample calculation.

- b. If the Intervention Performed QDM data element SUICIDE RISK ASSESSMENT during Occurrence A of \$MDDEncounters161 (Encounter Performed QDM data element PSYCH VISIT – DIAGNOSTIC EVALUATION, or PSYCH VISIT – PSYCHOTHERAPY, or EMERGENCY DEPARTMENT VISIT, or OFFICE VISIT, or OUTPATIENT CONSULTATION, or PSYCHOANALYSIS, or FACE-TO-FACE INTERACTION) equals No, include in No/Missing Numerator Data Submitted. Stop Processing.

**SAMPLE CALCULATION:**

**Performance Rate =**

$$\frac{\text{Numerator (a = 7 visits)}}{\text{Denominator (b = 10 visits) – Denominator Exclusions (N/A) – Denominator Exceptions (N/A)}} = 70.00\%$$