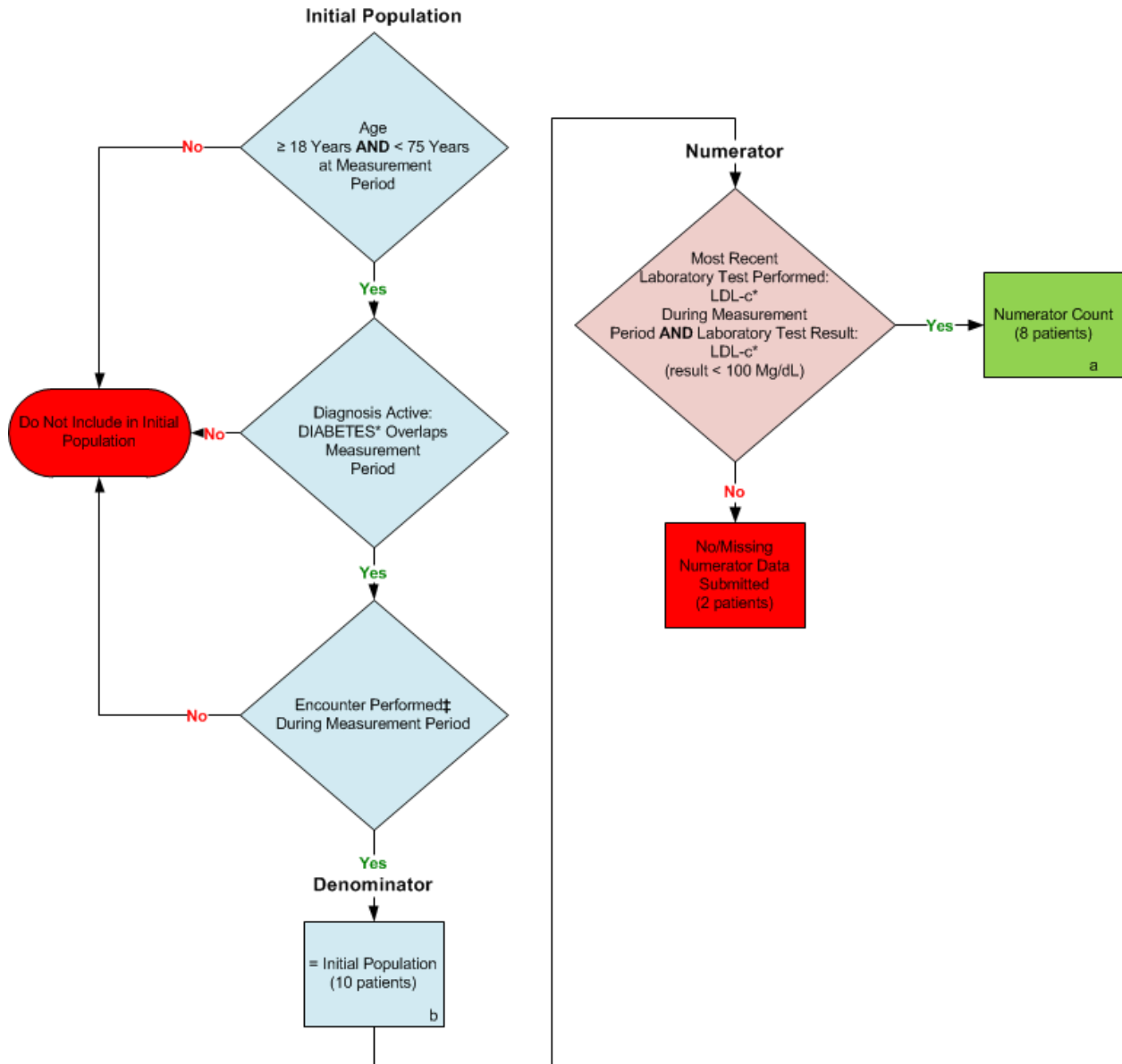


2014 eCQM Flow
Measure Identifier: CMS163v4.1
 NQF 0064: Diabetes: Low Density Lipoprotein (LDL) Management



*Please refer to the specific section of the eCQM to identify the QDM data elements and associated value sets for use in reporting this eCQM.

† For a listing of appropriate encounters, please refer to the Population Criteria and associated value sets as specific data elements have not been listed.

SAMPLE CALCULATION:

Performance Rate =

$$\frac{\text{Numerator (a=8 patients)}}{\text{Denominator (b=10 patients) – Denominator Exclusions (N/A) – Denominator Exceptions (N/A)}} = 80.00\%$$

2014 eCQM Flows
Measure Identifier: CMS163v4.1
NQF 0064: Diabetes: Low Density Lipoprotein (LDL) Management

Please refer to the specific section of the eCQM to identify the Population Criteria and associated value sets for use in reporting this eCQM.

1. Start Initial Population
2. Check Age:
 - a. If the AGE greater than or equal to 18 years and less than 75 years of age at measurement period equals No, do not include in Initial Population. Stop Processing.
 - b. If the AGE greater than or equal to 18 years and less than 75 years of age at measurement period equals Yes, continue processing and proceed to check Diagnosis Active.
3. Check Diagnosis Active:
 - a. If the Diagnosis Active QDM data element, Diagnosis Active: DIABETES, overlaps measurement period equals No, do not include in the Initial Population. Stop Processing.
 - b. If the Diagnosis Active QDM data element, Diagnosis Active: DIABETES, overlaps measurement period equals Yes, proceed to check Encounter Performed.
4. Check Encounter Performed:
 - a. If the Encounter Performed QDM data element, OFFICE VISIT, during measurement period, equals No, proceed to check next Encounter Performed.
 - b. If the Encounter Performed QDM data element, OFFICE VISIT, during measurement period, equals Yes, include in the Initial Population and proceed to the Denominator.
 - c. If the Encounter Performed QDM data element, FACE-TO-FACE INTERACTION, during measurement period, equals No, proceed to check next Encounter Performed.
 - d. If the Encounter Performed QDM data element, FACE-TO-FACE INTERACTION, during measurement period, equals Yes, include in the Initial Population and proceed to the Denominator.
 - e. If the Encounter Performed QDM data element, PREVENTIVE CARE SERVICES – ESTABLISHED OFFICE VISIT, 18 AND UP, during measurement period, equals No, proceed to check next Encounter Performed.
 - f. If the Encounter Performed QDM data element, PREVENTIVE CARE SERVICES – ESTABLISHED OFFICE VISIT, 18 AND UP, during measurement period, equals Yes, include in the Initial Population and proceed to the Denominator.
 - g. If the Encounter Performed QDM data element, PREVENTIVE CARE SERVICES – INITIAL OFFICE VISIT, 18 AND UP, during measurement period, equals No, proceed to check next Encounter Performed.
 - h. If the Encounter Performed QDM data element, PREVENTIVE CARE SERVICES – INITIAL OFFICE VISIT, 18 AND UP, during measurement period, equals Yes, include in the Initial Population and proceed to the Denominator.

- i. If the Encounter Performed QDM data element, HOME HEALTHCARE SERVICES, during measurement period, equals No, proceed to check next Encounter Performed.
 - j. If the Encounter Performed QDM data element, HOME HEALTHCARE SERVICES, during measurement period, equals Yes, include in the Initial Population and continue on to the Denominator.
 - k. If the Encounter Performed QDM data element, ANNUAL WELLNESS VISIT, during measurement period, equals No, do not include in the Initial Population. Stop Processing.
 - l. If the Encounter Performed QDM data element, ANNUAL WELLNESS VISIT, during measurement period, equals Yes, include in the Initial Population proceed to the Denominator.
5. Start Denominator
- a. Denominator equals the Initial Population. Denominator is represented by Letter b in the sample calculation listed at the end of this document. Letter b equals 10 patients in the sample calculation.
6. Start Numerator
7. Check Most Recent Laboratory Test Performed:
- a. If the Most Recent Laboratory Test Performed QDM data element, LDL-c during measurement period, AND Most Laboratory Test Result QDM data element, LDL-c (result less than 100 mg/dL), equals No, include in the No/Missing Data Submitted count. Stop Processing.
 - b. If the Most Recent Laboratory Test Performed QDM data element, LDL-c during measurement period, AND Most Laboratory Test Result QDM data element, LDL-c (result less than 100 mg/dL), equals Yes, include in Numerator Count, which is represented by Letter a in the sample calculation listed at the end of this document. Letter a equals 8 patients in the sample calculation. Stop Processing.

SAMPLE CALCULATION:		
Performance Rate =		
<u>Numerator (a=8 patients)</u>		= 80.00%
Denominator (b=10 patients) – Denominator Exclusions (N/A) – Denominator Exceptions (N/A)		