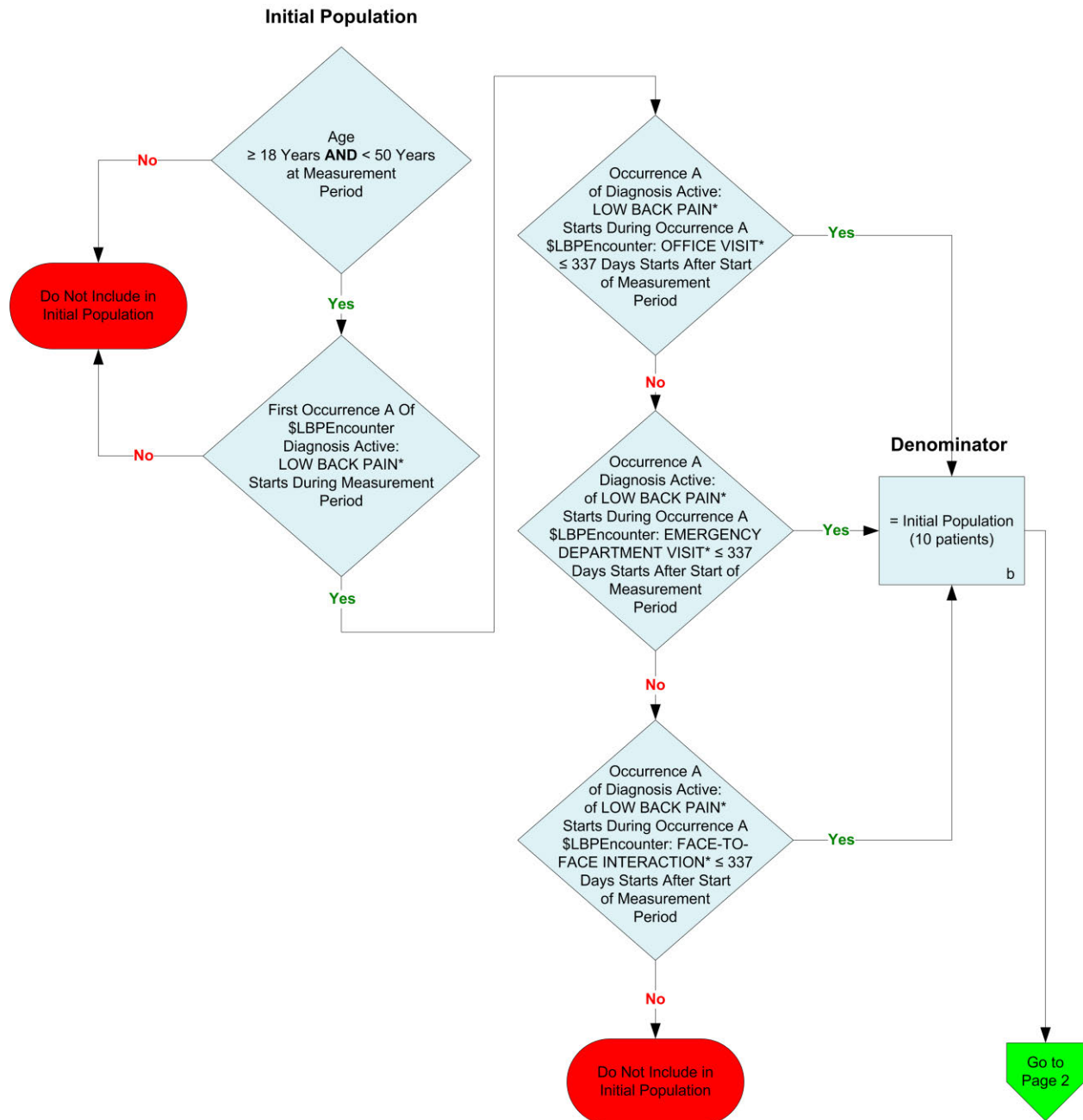
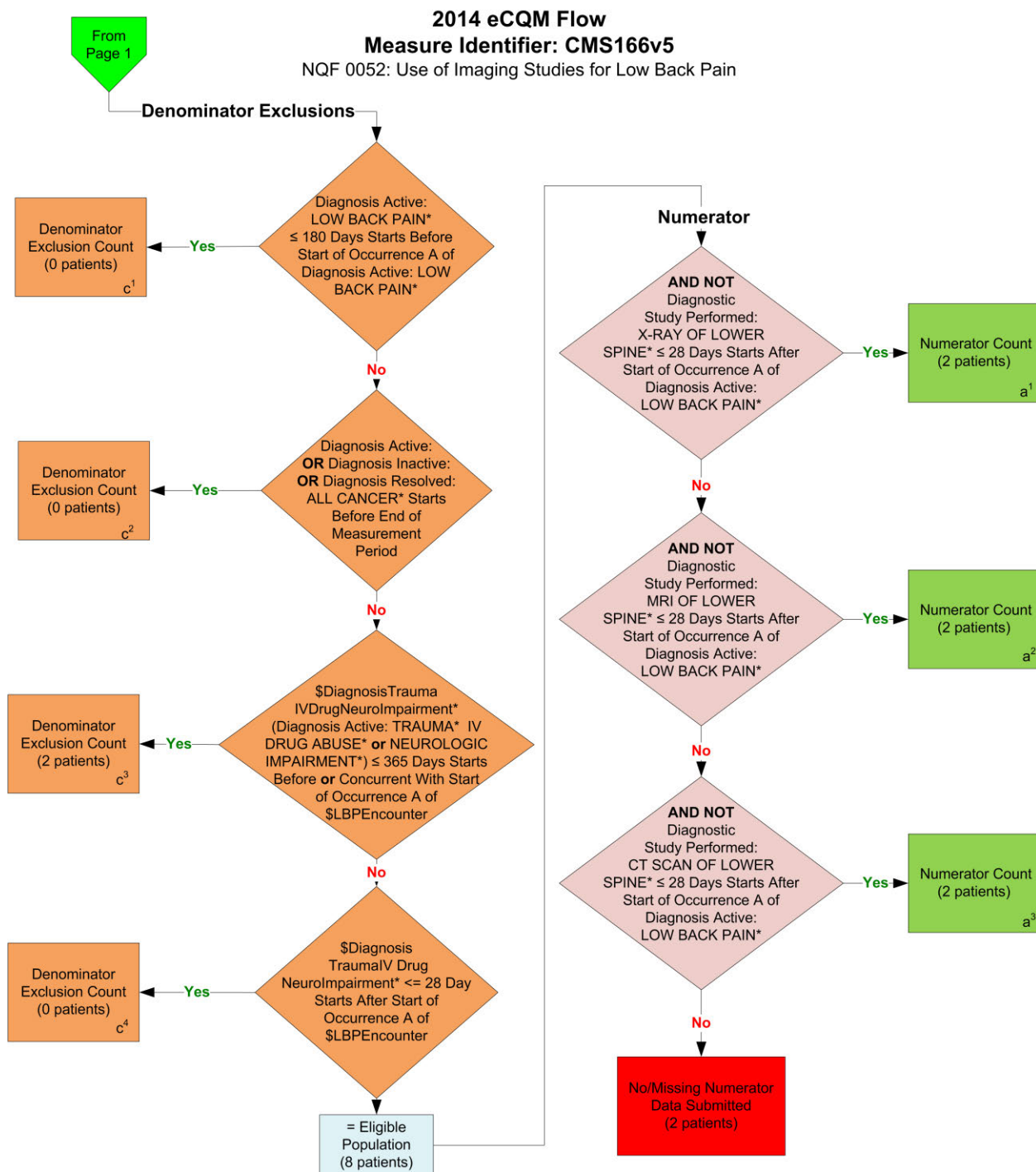


2014 eCQM Flow
Measure Identifier: CMS166v5
NQF 0052: Use of Imaging Studies for Low Back Pain



*Please refer to the specific section of the eCQM to identify the QDM data elements and associated value sets for use in reporting this eCQM.



*Please refer to the specific section of the eCQM to identify the QDM data elements and associated value sets for use in reporting this eCQM.

SAMPLE CALCULATION:

Performance Rate =

$$\frac{\text{Numerator } (a^1 + a^2 + a^3 = 6 \text{ patients})}{\text{Denominator } (b=10 \text{ patients}) - \text{Denominator Exclusions } (c^1 + c^2 + c^3 + c^4 = 2 \text{ patients}) - \text{Denominator Exceptions } (N/A)} = 75.00\%$$

2014 eCQM Flows
Measure Identifier: CMS166v5
NQF 0052: Use of Imaging Studies for Low Back Pain

Please refer to the specific section of the eCQM to identify the Population Criteria and associated value sets for use in reporting this eCQM.

1. Start Initial Population
2. Check Age:
 - a. If the AGE is greater than or equal to 18 years and less than 50 years at measurement period equals No, do not include in Initial Population. Stop Processing.
 - b. If the AGE is greater than or equal to 18 years and less than 50 years at measurement period equals Yes, proceed to First Occurrence A of \$LBPEncounter.
3. Check First Occurrence A of \$LBPEncounter:
 - a. If First Occurrence A of \$LBPEncounter (Encounter Performed, QDM data element OFFICE VIST, or QDM data element EMERGENCY DEPARTMENT VISIT, or QDM data element FACE TO FACE INTERACTION less than or equal to 337 days starts after start of measurement period), Diagnosis Active QDM data element, LOW BACK PAIN, starts during measurement period equals Yes, proceed to check Occurrence A of Diagnosis Active.
 - b. If First Occurrence A of \$LBPEncounter (Encounter Performed, QDM data element OFFICE VIST, or QDM data element EMERGENCY DEPARTMENT VISIT, or QDM data element FACE TO FACE INTERACTION less than or equal to 337 days starts after start of measurement period), Diagnosis Active QDM data element, LOW BACK PAIN, starts during measurement period equals No, do not include in the Initial Population. Stop Processing.
4. Check Occurrence A of Diagnosis Active:
 - a. If Occurrence A of Diagnosis Active QDM data element, LOW BACK PAIN, starts during \$LBPEncounter: Encounter Performed QDM data element, OFFICE VISIT, less than or equal to 337 days starts after start of measurement period equals Yes, include in the Initial Population and continue on to the Denominator.
 - b. If Occurrence A of Diagnosis Active QDM data element, LOW BACK PAIN, starts during \$LBPEncounter: Encounter Performed QDM data element, OFFICE VISIT, less than or equal to 337 days starts after start of measurement period equals No, proceed to check Occurrence A of Diagnosis Active.
5. Check Occurrence A of Diagnosis Active:
 - a. If Occurrence A of Diagnosis Active QDM data element, LOW BACK PAIN, starts during \$LBPEncounter: Encounter Performed QDM data element, EMERGENCY DEPARTMENT VISIT, less than or equal to 337 days starts after start of measurement period equals Yes, include in the Initial Population and continue on to the Denominator.

- b. If Occurrence A of Diagnosis Active QDM data element, LOW BACK PAIN, starts during \$LBPEncounter: Encounter Performed QDM data element, EMERGENCY DEPARTMENT VISIT, less than or equal to 337 days starts after start of measurement period equals No, proceed to check Occurrence A of Diagnosis Active.
6. Check Occurrence A of Diagnosis Active:
 - a. If Occurrence A of Diagnosis Active QDM data element, LOW BACK PAIN, starts during \$LBPEncounter: Encounter Performed QDM data element, FACE-TO-FACE INTERACTION, less than or equal to 337 days starts after start of measurement period equals Yes, include in the Initial Population and continue on to the Denominator.
 - b. If Occurrence A of Diagnosis Active QDM data element, LOW BACK PAIN, starts during \$LBPEncounter: Encounter Performed QDM data element, FACE-TO-FACE INTERACTION, less than or equal to 337 days starts after start of measurement period equals No, do not include in the Initial Population. Stop Processing.
7. Start Denominator
 - a. Denominator equals the Initial Population. Denominator is represented by Letter b in the sample calculation listed at the end of this document. Letter b equals 10 patients in the sample calculation.
8. Start Denominator Exclusions
9. Check Diagnosis Active:
 - a. If the Diagnosis Active QDM data element, LOW BACK PAIN, less than or equal to 180 days starts before start of Occurrence A of Diagnosis Active QDM data element, LOW BACK PAIN equals Yes, include in Denominator Exclusions count. Denominator Exclusion is represented by Letter c¹ in the sample calculation listed at the end of this document. Letter c¹ equals 0 patients in the sample calculation.
 - b. If the Diagnosis Active QDM data element, LOW BACK PAIN, less than or equal to 180 days starts before start of Occurrence A of Diagnosis Active QDM data element, LOW BACK PAIN equals No, proceed to check Diagnosis Active or Diagnosis Inactive or Diagnosis Resolved.
10. Check Diagnosis Active or Diagnosis Inactive, or Diagnosis Resolved:
 - a. If the Diagnosis Active, Diagnosis Inactive, or Diagnosis Resolved QDM data element, ALL CANCER, starts before end of measurement period equals Yes, include in Denominator Exclusions count. Denominator Exclusion is represented by Letter c² in the sample calculation listed at the end of this document. Letter c² equals 0 patients in the sample calculation.
 - b. If the Diagnosis Active, Diagnosis Inactive, or Diagnosis Resolved QDM data element, ALL CANCER, starts before end of measurement period equals No, proceed to check \$DiagnosisTraumaIVDrugNeuroImpairment.
11. Check \$DiagnosisTraumaIVDrugNeuroImpairment:
 - a. If \$DiagnosisTraumaIVDrugNeuroImpairment (QDM data element, TRAUMA, or QDM data element IV DRUG ABUSE, or QDM data element NEUROLOGIC

IMPAIRMENT), less than or equal to 365 days starts before or concurrent with start of Occurrence A of \$LBPENCOUNTER (Encounter Performed, QDM data element, OFFICE VISIT, or QDM data element, EMERGENCY DEPARTMENT VISIT, or QDM data element, FACE-TO-FACE INTERACTION) equals Yes, include in Denominator Exclusions count. Denominator Exclusion is represented by Letter c³ in the sample calculation listed at the end of this document. Letter c³ equals 2 patients in the sample calculation.

- b. If \$DiagnosisTraumaIVDrugNeuroImpairment (QDM data element, TRAUMA, or QDM data element IV DRUG ABUSE, or QDM data element NEUROLOGIC IMPAIRMENT), less than or equal to 365 days starts before or concurrent with start of Occurrence A of \$LBPENCOUNTER (Encounter Performed, QDM data element, OFFICE VISIT, or QDM data element, EMERGENCY DEPARTMENT VISIT, or QDM data element, FACE-TO-FACE INTERACTION) equals No, proceed to check \$DiagnosisTraumaIVDrugNeuroImpairment.

12. Check for \$DiagnosisTraumaIVDrugNeuroImpairment:

- a. If \$DiagnosisTraumaIVDrugNeuroImpairment (QDM data element, TRAUMA, or QDM data element IV DRUG ABUSE, or QDM data element NEUROLOGIC IMPAIRMENT), less than or equal to 28 days starts after start of Occurrence A of \$LBPENCOUNTER (Encounter Performed, QDM data element, OFFICE VISIT, or QDM data element, EMERGENCY DEPARTMENT VISIT, or QDM data element, FACE-TO-FACE INTERACTION) equals Yes, include in Denominator Exclusions count. Denominator Exclusion is represented by Letter c⁴ in the sample calculation listed at the end of this document. Letter c⁴ equals 2 patients in the sample calculation.
- b. If \$DiagnosisTraumaIVDrugNeuroImpairment (QDM data element, TRAUMA, or QDM data element IV DRUG ABUSE, or QDM data element NEUROLOGIC IMPAIRMENT), less than or equal to 28 days starts after start of Occurrence A of \$LBPENCOUNTER (Encounter Performed, QDM data element, OFFICE VISIT, or QDM data element, EMERGENCY DEPARTMENT VISIT, or QDM data element, FACE-TO-FACE INTERACTION) equals No, include in Eligible Population and proceed to Numerator.

13. Start Numerator

14. Check AND NOT Diagnostic Study Performed:

- a. If AND NOT Diagnostic Study Performed QDM data element, X-RAY OF LOWER SPINE, less than or equal to 28 days starts after start of Occurrence A of Diagnosis Active, QDM data element, LOW BACK PAIN equals Yes, include in Numerator Count. Numerator is represented by Letter a¹ in the sample calculation listed at the end of this document. Letter a¹ equals 2 patients in the sample calculation.
- b. If AND NOT Diagnostic Study Performed QDM data element, X-RAY OF LOWER SPINE, less than or equal to 28 days starts after start of Occurrence A of Diagnosis Active, QDM data element, LOW BACK PAIN equals No, proceed to check next AND NOT Diagnostic Study Performed.

15. Check AND NOT Diagnostic Study Performed:

- a. If AND NOT Diagnostic Study Performed QDM data element, MRI OF LOWER SPINE, less than or equal to 28 days starts after start of Occurrence A of Diagnosis Active, QDM data element, LOW BACK PAIN equals Yes, include in Numerator Count. Numerator is represented by Letter a^2 in the sample calculation listed at the end of this document. Letter a^2 equals 2 patients in the sample calculation.
- b. If AND NOT Diagnostic Study Performed QDM data element, MRI OF LOWER SPINE, less than or equal to 28 days starts after start of Occurrence A of Diagnosis Active, QDM data element, LOW BACK PAIN equals No, proceed to check next AND NOT Diagnostic Study Performed.

16. Check AND NOT Diagnostic Study Performed:

- a. If AND NOT Diagnostic Study Performed QDM data element, CT SCAN OF LOWER SPINE, less than or equal to 28 days starts after start of Occurrence A of Diagnosis Active, QDM data element, LOW BACK PAIN, equals Yes, include in Numerator Count. Numerator is represented by Letter a^3 in the sample calculation listed at the end of this document. Letter a^3 equals 2 patients in the sample calculation.
- b. If AND NOT Diagnostic Study Performed QDM data element, CT SCAN OF LOWER SPINE, less than or equal to 28 days starts after start of Occurrence A of Diagnosis Active, QDM data element, LOW BACK PAIN, equals No, include in the No/Missing Data Submitted count. Stop Processing.

SAMPLE CALCULATION:

Performance Rate =

$$\frac{\text{Numerator } (a^1 + a^2 + a^3 = 6 \text{ patients})}{\text{Denominator } (b=10 \text{ patients}) - \text{Denominator Exclusions } (c^1 + c^2 + c^3 + c^4=2 \text{ patients}) - \text{Denominator Exceptions } (N/A)} = 75.00\%$$