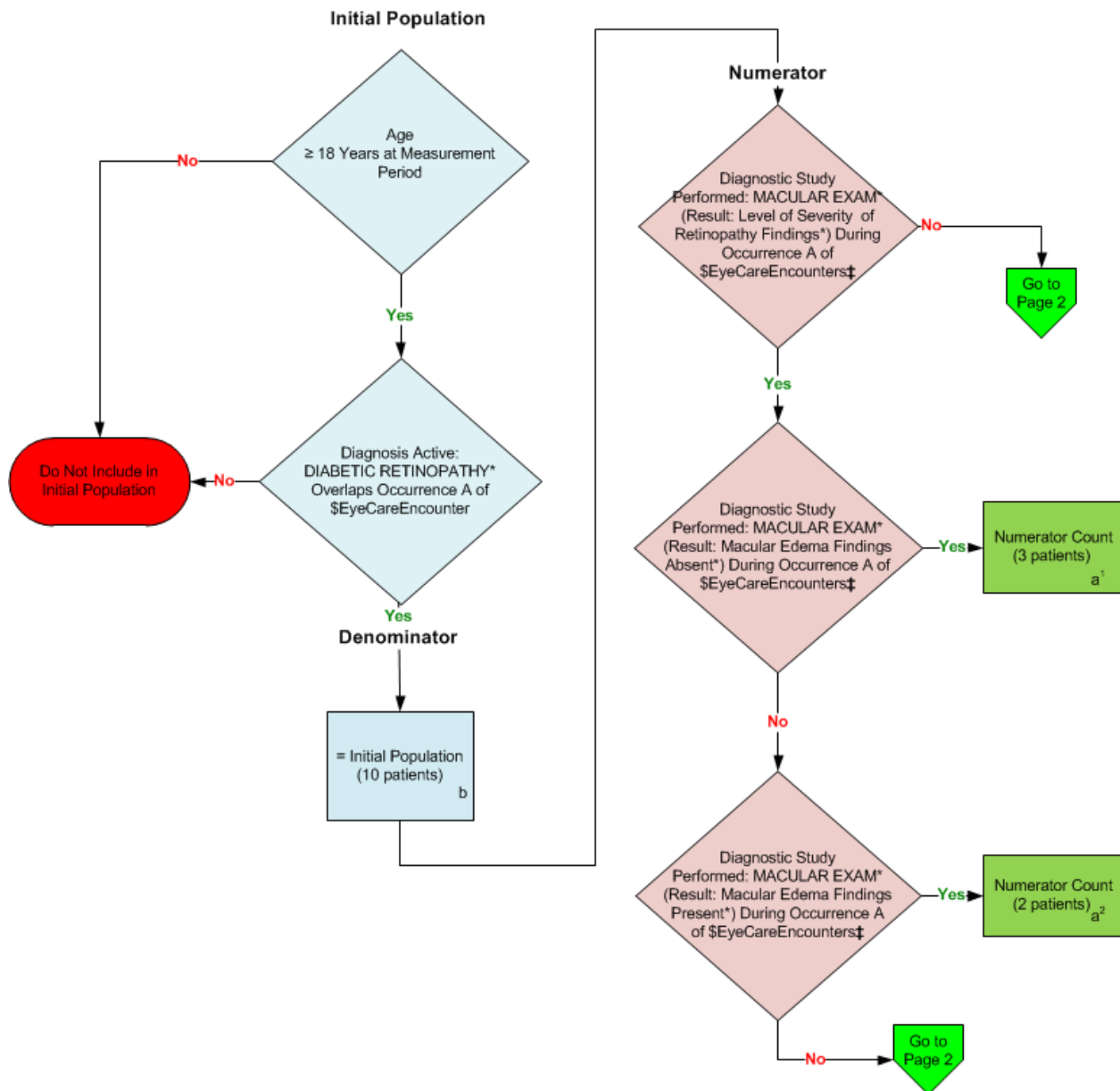


2014 eCQM Flow
Measure Identifier: CMS167v4

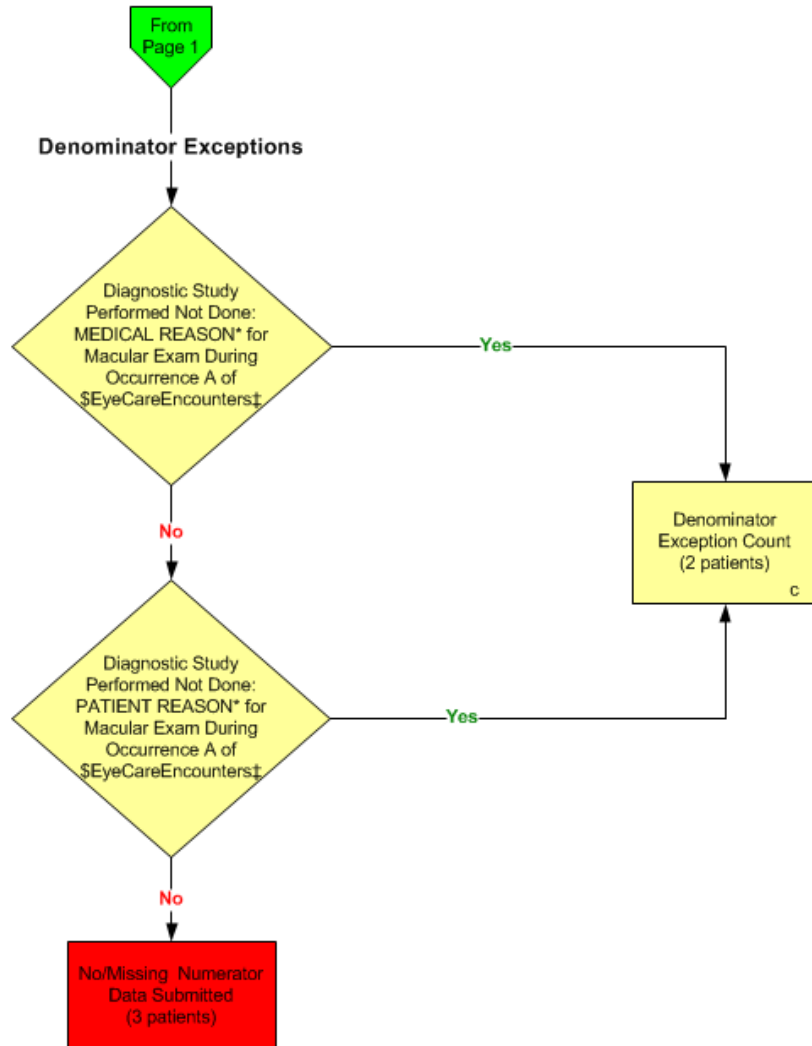
NQF 0088: Diabetic Retinopathy: Documentation of Presence or Absence of Macular Edema and
Level of Severity of Retinopathy



*Please refer to the specific section of the eCQM to identify the QDM data elements and associated value sets for use in reporting this eCQM.
‡For a listing of appropriate encounters, please refer to the Population Criteria and associated value sets as specific data elements have not been listed.

2014 eCQM Flow
Measure Identifier: CMS167v4

NQF 0088: Diabetic Retinopathy: Documentation of Presence or Absence of Macular Edema and
Level of Severity of Retinopathy



*Please refer to the specific section of the eCQM to identify the QDM data elements and associated value sets for use in reporting this eCQM.
‡For a listing of appropriate encounters, please refer to the Population Criteria and associated value sets as specific data elements have not been listed.

SAMPLE CALCULATION:

Performance Rate =

$$\frac{\text{Numerator (a}^1\text{+a}^2\text{ = 5 patients)}}{\text{Denominator (b = 10 patients) – Denominator Exclusions (N/A) – Denominator Exceptions (c = 2 patients)}} = 62.50\%$$

2014 eCQM Flows

Measure Identifier: CMS167v4

NQF 0088: Diabetic Retinopathy: Documentation of Presence or Absence of Macular Edema and Level of Severity of Retinopathy

Please refer to the specific section of the eCQM to identify the Population Criteria and associated value sets for use in reporting this eCQM.

1. Start Initial Population
2. Check Age:
 - a. If the AGE is greater than or equal to 18 years at measurement period, equals No, do not include in Initial Population. Stop Processing.
 - b. If the AGE is greater than or equal to 18 years at measurement period, equals Yes, proceed to check Diagnosis Active.
3. Check Diagnosis Active:
 - a. If the Diagnosis Active QDM data element, DIABETIC RETINOPATHY, overlaps Occurrence A of \$EyeCareEncounters (Encounter Performed QDM data element, OPHTHALMOLOGICAL SERVICES, or QDM data element, CARE SERVICES IN LONG-TERM RESIDENTIAL FACILITY, or QDM data element, NURSING FACILITY VISIT, or QDM data element, OFFICE VISIT, or QDM data element, OUTPATIENT CONSULTATION, or QDM data element, FACE-TO-FACE INTERACTION, during measurement period) equals No, do not include in Initial Population. Stop Processing.
 - b. If the Diagnosis Active QDM data element, DIABETIC RETINOPATHY, overlaps Occurrence A of \$EyeCareEncounters (Encounter Performed QDM data element, OPHTHALMOLOGICAL SERVICES, or QDM data element, CARE SERVICES IN LONG-TERM RESIDENTIAL FACILITY, or QDM data element, NURSING FACILITY VISIT, or QDM data element, OFFICE VISIT, or QDM data element, OUTPATIENT CONSULTATION, or QDM data element, FACE-TO-FACE INTERACTION, during measurement period) equals Yes, proceed to Denominator.
4. Start Denominator
 - a. Denominator equals the Initial Population. Denominator is represented by Letter b in the sample calculation listed at the end of this document. Letter b equals 10 patients in the sample calculation.
5. Start Numerator
6. Check Diagnostic Study Performed:
 - a. If the Diagnostic Study Performed QDM data element, MACULAR EXAM (Result: Level of Severity of Retinopathy Findings), during Occurrence A of \$EyeCareEncounters (Encounter Performed QDM data element, OPHTHALMOLOGICAL SERVICES, or QDM data element, CARE SERVICES IN LONG-TERM RESIDENTIAL FACILITY, or QDM data element, NURSING FACILITY VISIT, or QDM data element, OFFICE VISIT, or QDM data element, OUTPATIENT

- CONSULTATION, or QDM data element, FACE-TO-FACE INTERACTION, during measurement period) equals No, proceed to Denominator Exceptions.
- b. If the Diagnostic Study Performed QDM data element, MACULAR EXAM (Result: Level of Severity of Retinopathy Findings), during Occurrence A of \$EyeCareEncounters (Encounter Performed QDM data element, OPHTHALMOLOGICAL SERVICES, or QDM data element, CARE SERVICES IN LONG-TERM RESIDENTIAL FACILITY, or QDM data element, NURSING FACILITY VISIT, or QDM data element, OFFICE VISIT, or QDM data element, OUTPATIENT CONSULTATION, or QDM data element, FACE-TO-FACE INTERACTION, during measurement period) equals Yes, check next Diagnostic Study Performed.
7. Check Diagnostic Study Performed:
- a. If the Diagnostic Study Performed QDM data element, MACULAR EXAM (Result: Macular Edema findings absent), during Occurrence A of \$EyeCareEncounters (Encounter Performed QDM data element, OPHTHALMOLOGICAL SERVICES, or QDM data element, CARE SERVICES IN LONG-TERM RESIDENTIAL FACILITY, or QDM data element, NURSING FACILITY VISIT, or QDM data element, OFFICE VISIT, or QDM data element, OUTPATIENT CONSULTATION, or QDM data element, FACE-TO-FACE INTERACTION, during measurement period), equals No, proceed to check next Diagnostic Study Performed.
- b. If the Diagnostic Study Performed QDM data element, MACULAR EXAM (Result: Macular Edema findings absent), during Occurrence A of \$EyeCareEncounters (Encounter Performed QDM data element, OPHTHALMOLOGICAL SERVICES, or QDM data element, CARE SERVICES IN LONG-TERM RESIDENTIAL FACILITY, or QDM data element, NURSING FACILITY VISIT, or QDM data element, OFFICE VISIT, or QDM data element, OUTPATIENT CONSULTATION, or QDM data element, FACE-TO-FACE INTERACTION, during measurement period), equals Yes, include in Numerator Count, which is represented by Letter a¹ in the sample calculation listed at the end of this document. Letter a¹ equals 3 patients in the sample calculation. Stop Processing.
8. Check Diagnostic Study Performed:
- a. If the Diagnostic Study Performed QDM data element, MACULAR EXAM (Result: Macular Edema findings present) during Occurrence A of \$EyeCareEncounters (Encounter Performed QDM data element, OPHTHALMOLOGICAL SERVICES, or QDM data element, CARE SERVICES IN LONG-TERM RESIDENTIAL FACILITY, or QDM data element, NURSING FACILITY VISIT, or QDM data element, OFFICE VISIT, or QDM data element, OUTPATIENT CONSULTATION, or QDM data element, FACE-TO-FACE INTERACTION, during measurement period), equals No, proceed to Denominator Exceptions.
- b. If the Diagnostic Study Performed QDM data element, MACULAR EXAM (Result: Macular Edema findings present) during Occurrence A of \$EyeCareEncounters (Encounter Performed QDM data element, OPHTHALMOLOGICAL SERVICES, or QDM data element, CARE SERVICES IN LONG-TERM RESIDENTIAL FACILITY, or QDM data element, NURSING FACILITY VISIT, or QDM data element, OFFICE VISIT, or QDM data element, OUTPATIENT CONSULTATION, or QDM data element, FACE-TO-FACE INTERACTION, during measurement period), equals Yes,

include in Numerator Count, which is represented by Letter a2 in the sample calculation listed at the end of this document. Letter a2 equals 2 patients in the sample calculation. Stop Processing.

9. Check Denominator Exceptions

10. Check Diagnostic Study Performed Not Done:

- a. If the Diagnostic Study Performed Not Done QDM data element, MEDICAL REASON, for Macular Exam during Occurrence A of \$EyeCareEncounters (Encounter Performed QDM data element, OPHTHALMOLOGICAL SERVICES, or QDM data element, CARE SERVICES IN LONG-TERM RESIDENTIAL FACILITY, or QDM data element, NURSING FACILITY VISIT, or QDM data element, OFFICE VISIT, or QDM data element, OUTPATIENT CONSULTATION, or QDM data element, FACE-TO-FACE INTERACTION, during measurement equals No, proceed to check Diagnostic Study Performed Not Done.
- b. If the Diagnostic Study Performed Not Done QDM data element, MEDICAL REASON, for Macular Exam during Occurrence A of \$EyeCareEncounters (Encounter Performed QDM data element, OPHTHALMOLOGICAL SERVICES, or QDM data element, CARE SERVICES IN LONG-TERM RESIDENTIAL FACILITY, or QDM data element, NURSING FACILITY VISIT, or QDM data element, OFFICE VISIT, or QDM data element, OUTPATIENT CONSULTATION, or QDM data element, FACE-TO-FACE INTERACTION, during measurement period) equals Yes, include in Denominator Exclusion Count, which is represented by Letter c in the sample calculation listed at the end of this document. Letter c equals 2 patients. Stop Processing.

11. Check Diagnostic Study Performed Not Done:

- a. If the Diagnostic Study Performed Not Done QDM data element, PATIENT REASON, for Macular Exam, during Occurrence A of \$EyeCareEncounters (Encounter Performed QDM data element, OPHTHALMOLOGICAL SERVICES, or QDM data element, CARE SERVICES IN LONG-TERM RESIDENTIAL FACILITY, or QDM data element, NURSING FACILITY VISIT, or QDM data element, OFFICE VISIT, or QDM data element, OUTPATIENT CONSULTATION, or QDM data element, FACE-TO-FACE INTERACTION, during measurement period) equals No, include in No/Missing Numerator Data Submitted. Stop Processing.
- b. If the Diagnostic Study Performed QDM data element, PATIENT REASON, for Macular Exam, during Occurrence A of \$EyeCareEncounters (Encounter Performed QDM data element, OPHTHALMOLOGICAL SERVICES, or QDM data element, CARE SERVICES IN LONG-TERM RESIDENTIAL FACILITY, or QDM data element, NURSING FACILITY VISIT, or QDM data element, OFFICE VISIT, or QDM data element, OUTPATIENT CONSULTATION, or QDM data element, FACE-TO-FACE INTERACTION, during measurement period) equals Yes, include in Denominator Exclusion Count, which is represented by Letter c in the sample calculation listed at the end of this document. Letter c equals 2 patients. Stop Processing.

SAMPLE CALCULATION:

Performance Rate =

$$\frac{\text{Numerator (a}^1\text{+a}^2\text{ = 5 patients)}}{\text{Denominator (b = 10 patients) – Denominator Exclusions (N/A) – Denominator Exceptions (c = 2 patients)}} = 62.50\%$$