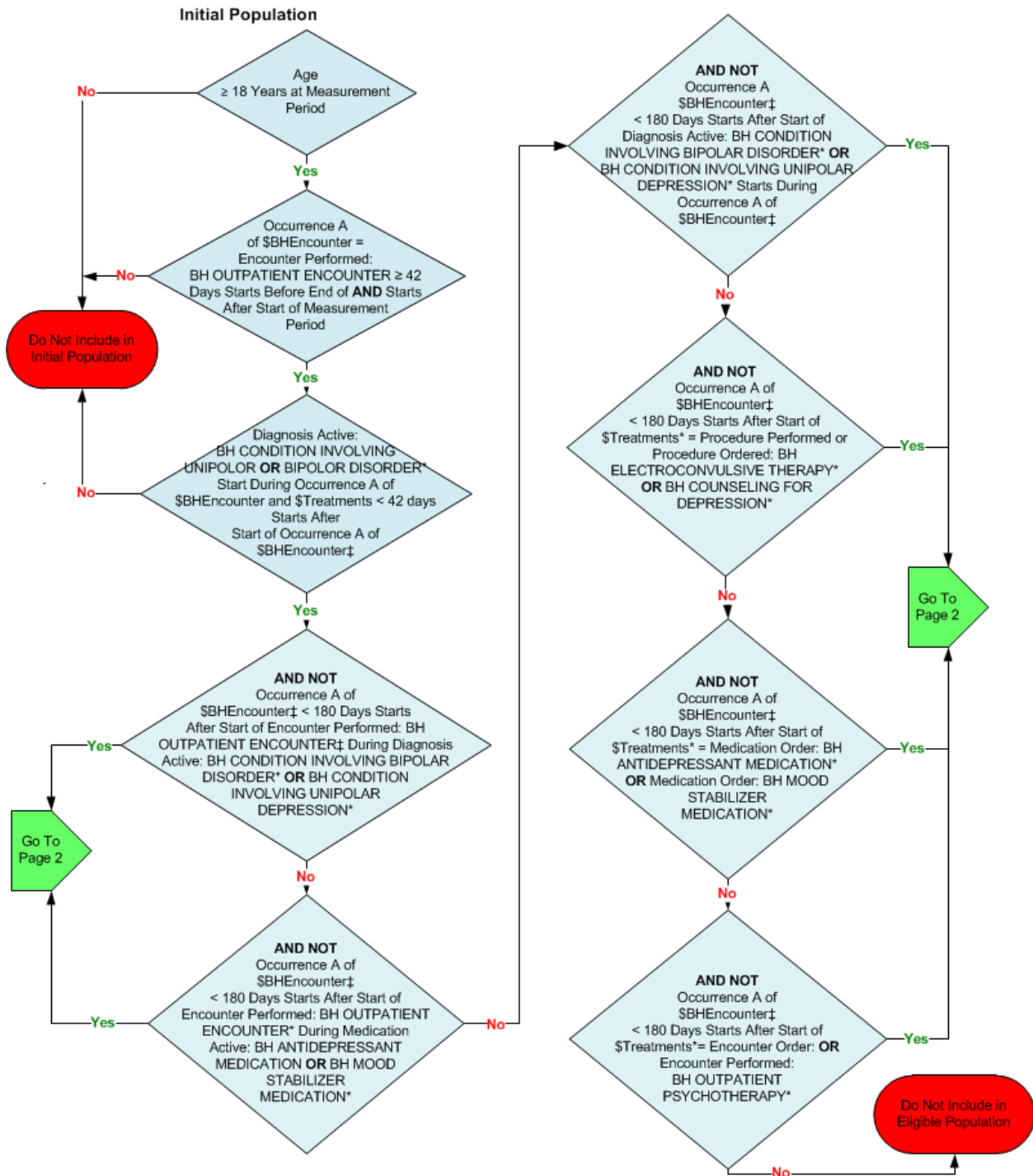


**2014 eCQM Flow
Measure Identifier: CMS169v4.1**

NQF 0110: Bipolar Disorder and Major Depression: Appraisal for Alcohol or Chemical Substance Use

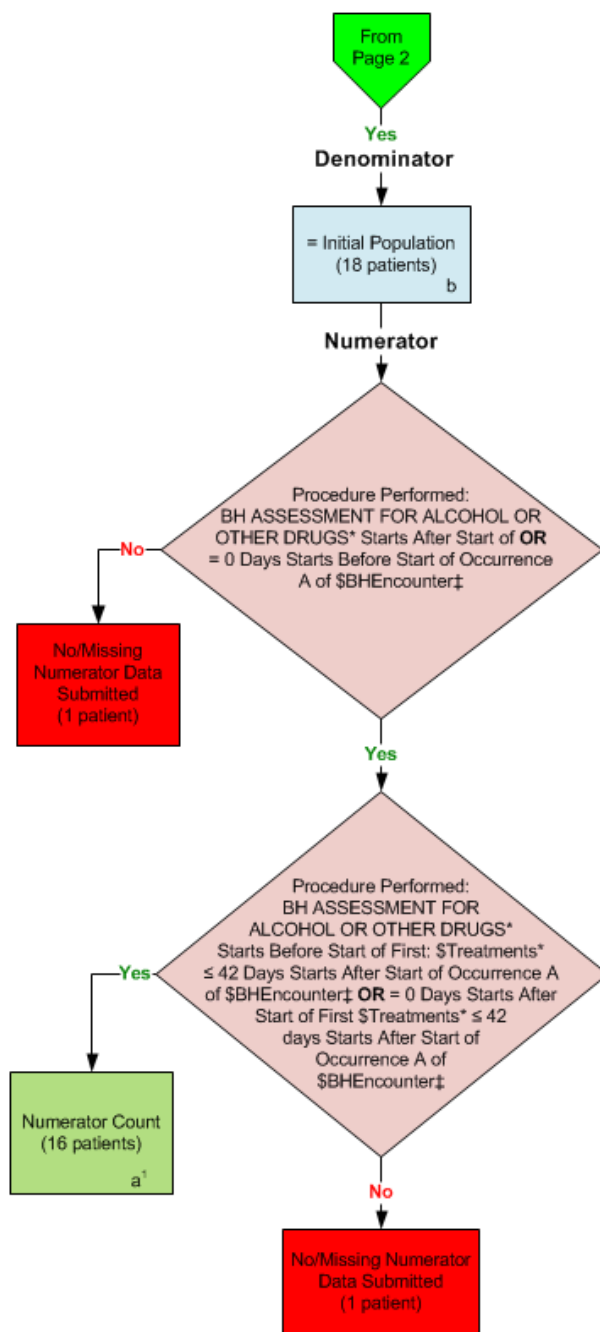


*Please refer to the specific section of the eCQM to identify the QDM data elements and associated value sets for use in reporting this eCQM.

‡ For a list of appropriate encounters, please refer to the Population Criteria and associated value sets as specific data elements have not been listed.

2014 eCQM Flow
Measure Identifier: CMS169v4.1

NQF 0110: Bipolar Disorder and Major Depression: Appraisal for Alcohol or Chemical Substance Use



*Please refer to the specific section of the eCQM to identify the QDM data elements and associated value sets for use in reporting this eCQM.

‡ For a list of appropriate encounters, please refer to the Population Criteria and associated value sets as specific data elements have not been listed.

SAMPLE CALCULATION:

Performance Rate =

$$\frac{\text{Numerator } (a^1 = 16 \text{ patients})}{\text{Denominator } (b=18 \text{ patients}) - \text{Denominator Exclusions (N/A)} - \text{Denominator Exceptions (N/A)}} = 88.89\%$$

2014 eCQM Flows

Measure Identifier: CMS169v4.1

NQF 0110: Bipolar Disorder and Major Depression: Appraisal for Alcohol or Chemical Substance Use

Please refer to the specific section of the eCQM to identify the Population Criteria and associated value sets for use in reporting this eCQM.

1. Start Initial Population
2. Check Age:
 - a. If the AGE is greater than or equal to 18 years at measurement period equals No, do not include in Initial Population. Stop Processing.
 - b. If the AGE is greater than or equal to 18 years at measurement period equals Yes, Occurrence A of \$BHEncounter.
3. Check Occurrence A of \$BHEncounter:
 - a. If Occurrence A of \$BHEncounter Encounter Performed, QDM data element, BH OUTPATIENT ENCOUNTER greater than or equal to 42 days starts before end of AND starts after start of measurement period equals No, do not include in Initial Population. Stop Processing.
 - b. If Occurrence A of \$BHEncounter Encounter Performed, QDM data element, BH OUTPATIENT ENCOUNTER greater than or equal to 42 days starts before end of AND starts after start of measurement period equals Yes, proceed to check Diagnosis Active.
4. Check Diagnosis Active:
 - a. If the Diagnosis Active QDM data element, BH CONDITION INVOLVING UNIPOLAR DEPRESSION or QDM data element, BIPOLAR DISORDER, starts during Occurrence A of \$BHEncounter (Encounter Performed, QDM data element, BH OUTPATIENT ENCOUNTER greater than or equal to 42 days starts before end of AND starts after start of measurement period) and \$Treatments (Procedure Performed, QDM data element, BH ELECTROCONVULSIVE THERAPY, Procedure Order, QDM data element BH ELECTROCONVULSIVE THERAPY, or, QDM BH COUNSELING FOR DEPRESSION, Medication Order, QDM data element, BH ANTIDEPRESSANT MEDICATION, QDM data element BH MOOD STABILIZER MEDICATION, or Encounter Order, QDM data element, BH OUTPATIENT PSYCHOTHERAPY, or Encounter Performed, QDM data element, BH OUTPATIENT PSYCHOTHERAPY) less than or 42 days starts after start of Occurrence A of \$BHEncounter (Encounter Performed, QDM data element, BH OUTPATIENT ENCOUNTER greater than or equal to 42 days starts before end of AND starts after start of measurement period) equals No, do not include in the Initial Population. Stop Processing.
 - b. If the Diagnosis Active QDM data element, BH CONDITION INVOLVING UNIPOLAR DEPRESSION or QDM data element, BIPOLAR DISORDER, starts during Occurrence A of \$BHEncounter (Encounter Performed, QDM data element, BH

OUTPATIENT ENCOUNTER greater than or equal to 42 days starts before end of AND starts after start of measurement period) and \$Treatments (Procedure Performed, QDM data element, BH ELECTROCONVULSIVE THERAPY, Procedure Order, QDM data element BH ELECTROCONVULSIVE THERAPY, or, QDM BH COUNSELING FOR DEPRESSION, Medication Order, QDM data element, BH ANTIDEPRESSANT MEDICATION, QDM data element BH MOOD STABILIZER MEDICATION, or Encounter Order, QDM data element, BH OUTPATIENT PSYCHOTHERAPY, or Encounter Performed, QDM data element, BH OUTPATIENT PSYCHOTHERAPY) less than or 42 days starts after start of Occurrence A of \$BHEncounter (Encounter Performed, QDM data element, BH OUTPATIENT ENCOUNTER greater than or equal to 42 days starts before end of AND starts after start of measurement period) equals Yes, proceed to check AND NOT Occurrence A of \$BHEncounter.

5. Check AND NOT Occurrence A of \$BHEncounter:

- a. If AND NOT Occurrence A of \$BHEncounter (Encounter Performed, QDM data element, BH OUTPATIENT ENCOUNTER greater than or equal to 42 days starts before end of AND starts after start of measurement period), less than 180 days starts after start of QDM data element, BH OUTPATIENT ENCOUNTER, during Diagnosis Active, QDM data element, BH CONDITION INVOLVING BIPOLAR DISORDER or QDM data element, BH CONDITION INVOLVING UNIPOLAR DEPRESSION equals No, proceed to check AND NOT Occurrence A of \$BHEncounter.
- b. If AND NOT Occurrence A of \$BHEncounter (Encounter Performed, QDM data element, BH OUTPATIENT ENCOUNTER greater than or equal to 42 days starts before end of AND starts after start of measurement period), less than 180 days starts after start of QDM data element, BH OUTPATIENT ENCOUNTER, during Diagnosis Active, QDM data element, BH CONDITION INVOLVING BIPOLAR DISORDER or QDM data element, BH CONDITION INVOLVING UNIPOLAR DEPRESSION equals Yes, include in Eligible Population Count, which is represented by Letter b in the sample calculation listed at the end of this document. Letter b equals 18 patients. Proceed to the Numerator.

6. Check AND NOT Occurrence A of \$BHEncounter:

- a. If AND NOT Occurrence A of \$BHEncounter (Encounter Performed, QDM data element, BH OUTPATIENT ENCOUNTER greater than or equal to 42 days starts before end of AND starts after start of measurement period), less than 180 days starts after start of Encounter Performed QDM data element, BH OUTPATIENT ENCOUNTER, during Medication Active QDM data element, BH ANTIDEPRESSANT MEDICATION or QDM data element, BH MOOD STABILIZER MEDICATION equals No, proceed to AND NOT Occurrence A of \$BHEncounter.
- b. If AND NOT Occurrence A of \$BHEncounter (Encounter Performed, QDM data element, BH OUTPATIENT ENCOUNTER greater than or equal to 42 days starts before end of AND starts after start of measurement period), less than 180 days starts after start of Encounter Performed QDM data element, BH OUTPATIENT ENCOUNTER, during Medication Active QDM data element, BH

ANTIDEPRESSANT MEDICATION or QDM data element, BH MOOD STABILIZER MEDICATION equals Yes, include in Eligible Population Count, which is represented by Letter b in the sample calculation listed at the end of this document. Letter b equals 18 patients. Proceed to the Numerator.

7. Check AND NOT Occurrence A of \$BHEncounter:

- a. If AND NOT Occurrence A of \$BHEncounter (Encounter Performed, QDM data element, BH OUTPATIENT ENCOUNTER greater than or equal to 42 days starts before end of AND starts after start of measurement period), less than 180 days starts after start of Diagnosis Active QDM data element, BH CONDITION INVOLVING BIPOLAR DISORDER or Diagnosis Active QDM data element, BH CONDITION INVOLVING UNIPOLAR DEPRESSION, starts during Occurrence A of \$BHEncounter (Encounter Performed, QDM data element, BH OUTPATIENT ENCOUNTER greater than or equal to 42 days starts before end of AND starts after start of measurement period) equals No, proceed to check AND NOT Occurrence A of \$BHEncounter.
- b. If AND NOT Occurrence A of \$BHEncounter (Encounter Performed, QDM data element, BH OUTPATIENT ENCOUNTER greater than or equal to 42 days starts before end of AND starts after start of measurement period), less than 180 days starts after start of Diagnosis Active QDM data element, BH CONDITION INVOLVING BIPOLAR DISORDER or Diagnosis Active QDM data element, BH CONDITION INVOLVING UNIPOLAR DEPRESSION, starts during Occurrence A of \$BHEncounter (Encounter Performed, QDM data element, BH OUTPATIENT ENCOUNTER greater than or equal to 42 days starts before end of AND starts after start of measurement period) equals Yes, include in Eligible Population Count, which is represented by Letter b in the sample calculation listed at the end of this document. Letter b equals 18 patients. Proceed to the Numerator.

8. Check AND NOT Occurrence A of \$BHEncounter:

- a. If AND NOT Occurrence A of \$BHEncounter (Encounter Performed, QDM data element, BH OUTPATIENT ENCOUNTER greater than or equal to 42 days starts before end of AND starts after start of measurement period) less than 180 days starts after start of \$Treatments (Procedure Performed, QDM data element, BH ELECTROCONVULSIVE THERAPY, or Procedure Order, QDM data element, BH ELECTROCONVULSIVE THERAPY, or BH COUNSELING FOR DEPRESSION) equals No, proceed to check AND NOT Occurrence A of \$BHEncounter.
- b. If AND NOT Occurrence A of \$BHEncounter (Encounter Performed, QDM data element, BH OUTPATIENT ENCOUNTER greater than or equal to 42 days starts before end of AND starts after start of measurement period) less than 180 days starts after start of \$Treatments (Procedure Performed, QDM data element, BH ELECTROCONVULSIVE THERAPY, or Procedure Order, QDM data element, BH ELECTROCONVULSIVE THERAPY, or BH COUNSELING FOR DEPRESSION) equals Yes, include in Eligible Population Count, which is represented by Letter b in the sample calculation listed at the end of this document. Letter b equals 18 patients. Proceed to the Numerator.

9. Check AND NOT Occurrence A of \$BHEncounter:

- a. If AND NOT Occurrence A of \$BHEncounter (Encounter Performed, QDM data element, BH OUTPATIENT ENCOUNTER greater than or equal to 42 days starts before end of AND starts after start of measurement period) less than 180 days starts after start of \$Treatments (Medication Order, QDM data element, BH ANTIDEPRESSANT MEDICATION, or BH MOOD STABILIZER MEDICATION) equals No, proceed to check AND NOT Occurrence A of \$BHEncounter Performed.
- b. If AND NOT Occurrence A of \$BHEncounter (Encounter Performed, QDM data element, BH OUTPATIENT ENCOUNTER greater than or equal to 42 days starts before end of AND starts after start of measurement period) less than 180 days starts after start of \$Treatments (Medication Order, QDM data element, BH ANTIDEPRESSANT MEDICATION, or BH MOOD STABILIZER MEDICATION) equals Yes, include in Eligible Population Count, which is represented by Letter b in the sample calculation listed at the end of this document. Letter b equals 18 patients. Proceed to the Numerator.

10. Check AND NOT Occurrence A of \$BHEncounter:

- a. If AND NOT Occurrence A of \$BHEncounter (Encounter Performed, QDM data element, BH OUTPATIENT ENCOUNTER greater than or equal to 42 days starts before end of AND starts after start of measurement period) less than 180 days starts after start of \$Treatments (Encounter Order, QDM data element, BH OUTPATIENT PSYCHOTHERAPY, or Encounter Performed, QDM data element, BH OUTPATIENT PSYCHOTHERAPY) equals No, do not include in Eligible Population. Stop Processing.
- b. If AND NOT Occurrence A of \$BHEncounter (Encounter Performed, QDM data element, BH OUTPATIENT ENCOUNTER greater than or equal to 42 days starts before end of AND starts after start of measurement period) less than 180 days starts after start of \$Treatments (Encounter Order, QDM data element, BH OUTPATIENT PSYCHOTHERAPY, or Encounter Performed, QDM data element, BH OUTPATIENT PSYCHOTHERAPY) equals Yes, include in Eligible Population Count, which is represented by Letter b in the sample calculation listed at the end of this document. Letter b equals 18 patients. Proceed to the Numerator.

11. Start Denominator

- a. Denominator equals the Initial Population.

12. Start Numerator

13. Check Procedure Performed:

- a. If the Procedure Performed QDM data element, BH ASSESSMENT FOR ALCOHOL OR OTHER DRUGS, starts after start of OR equals 0 days starts before start of Occurrence A of \$BHEncounter (Encounter Performed, QDM data element, BH OUTPATIENT ENCOUNTER greater than or equal to 42 days starts before end of AND starts after start of measurement period) equals No, include in the No/Missing Data Submitted count. Stop Processing.
- b. If the Procedure Performed QDM data element, BH ASSESSMENT FOR ALCOHOL OR OTHER DRUGS, starts after start of OR equals 0 days starts before start of Occurrence A of \$BHEncounter (Encounter Performed, QDM data element, BH

OUTPATIENT ENCOUNTER greater than or equal to 42 days starts before end of AND starts after start of measurement period) equals Yes, proceed to check Procedure Performed.

14. Check Procedure Performed:

- a. If the Procedure Performed QDM data element, BH ASSESSMENT FOR ALCOHOL OR OTHER DRUGS, starts before start of First \$Treatments (Procedure Performed, QDM data element, BH ELECTROCONVULSIVE THERAPY, or BH COUNSELING FOR DEPRESSION, or Procedure Order, QDM data element, BH ELECTROCONVULSIVE THERAPY, or BH COUNSELING FOR DEPRESSION, or Medication Order, QDM data element, BH ANTIDEPRESSANT MEDICATION, or BH MOOD STABILIZER MEDICATION, or Encounter Order, QDM data element, BH OUTPATIENT PSYCHOTHERAPY, or Encounter Performed, QDM data element, BH OUTPATIENT PSYCHOTHERAPY), less than or equal to 42 days starts after start of Occurrence A of \$BHEncounter (Encounter Performed, QDM data element, BH OUTPATIENT ENCOUNTER greater than or equal to 42 days starts before end of AND starts after start of measurement period) OR equals 0 days start after start of First \$Treatments (Procedure Performed, QDM data element, BH ELECTROCONVULSIVE THERAPY, or BH COUNSELING FOR DEPRESSION, or Procedure Order, QDM data element, BH ELECTROCONVULSIVE THERAPY, or BH COUNSELING FOR DEPRESSION, or Medication Order, QDM data element, BH ANTIDEPRESSANT MEDICATION, or BH MOOD STABILIZER MEDICATION, or Encounter Order, QDM data element, BH OUTPATIENT PSYCHOTHERAPY, or Encounter Performed, QDM data element, BH OUTPATIENT PSYCHOTHERAPY), less than or equal to 42 days starts after start of Occurrence A of \$BHEncounter (Encounter Performed, QDM data element, BH OUTPATIENT ENCOUNTER greater than or equal to 42 days starts before end of AND starts after start of measurement period) equals No, include in the No/Missing Data Submitted count. Stop Processing.
- b. If the Procedure Performed QDM data element, BH ASSESSMENT FOR ALCOHOL OR OTHER DRUGS, starts before start of First \$Treatments (Procedure Performed, QDM data element, BH ELECTROCONVULSIVE THERAPY, or BH COUNSELING FOR DEPRESSION, or Procedure Order, QDM data element, BH ELECTROCONVULSIVE THERAPY, or BH COUNSELING FOR DEPRESSION, or Medication Order, QDM data element, BH ANTIDEPRESSANT MEDICATION, or BH MOOD STABILIZER MEDICATION, or Encounter Order, QDM data element, BH OUTPATIENT PSYCHOTHERAPY, or Encounter Performed, QDM data element, BH OUTPATIENT PSYCHOTHERAPY), less than or equal to 42 days starts after start of Occurrence A of \$BHEncounter (Encounter Performed, QDM data element, BH OUTPATIENT ENCOUNTER greater than or equal to 42 days starts before end of AND starts after start of measurement period) OR equals 0 days start after start of First \$Treatments (Procedure Performed, QDM data element, BH ELECTROCONVULSIVE THERAPY, or BH COUNSELING FOR DEPRESSION, or Procedure Order, QDM data element, BH ELECTROCONVULSIVE THERAPY, or BH COUNSELING FOR DEPRESSION, or Medication Order, QDM data element, BH ANTIDEPRESSANT MEDICATION, or BH MOOD STABILIZER MEDICATION, or Encounter Order, QDM data element, BH OUTPATIENT PSYCHOTHERAPY, or

Encounter Performed, QDM data element, BH OUTPATIENT PSYCHOTHERAPY), less than or equal to 42 days starts after start of Occurrence A of \$BHEncounter (Encounter Performed, QDM data element, BH OUTPATIENT ENCOUNTER greater than or equal to 42 days starts before end of AND starts after start of measurement period) equals Yes, include in Numerator Count, which is represented by Letter a1 in the sample calculation listed at the end of this document. Letter a1 equals 16 patients in the sample calculation. Stop Processing.

SAMPLE CALCULATION:

Performance Rate =

$$\frac{\text{Numerator (a}^1\text{ = 16 patients)}}{\text{Denominator (b=18 patients) – Denominator Exclusions (N/A) – Denominator Exceptions (N/A)}} = 88.89\%$$