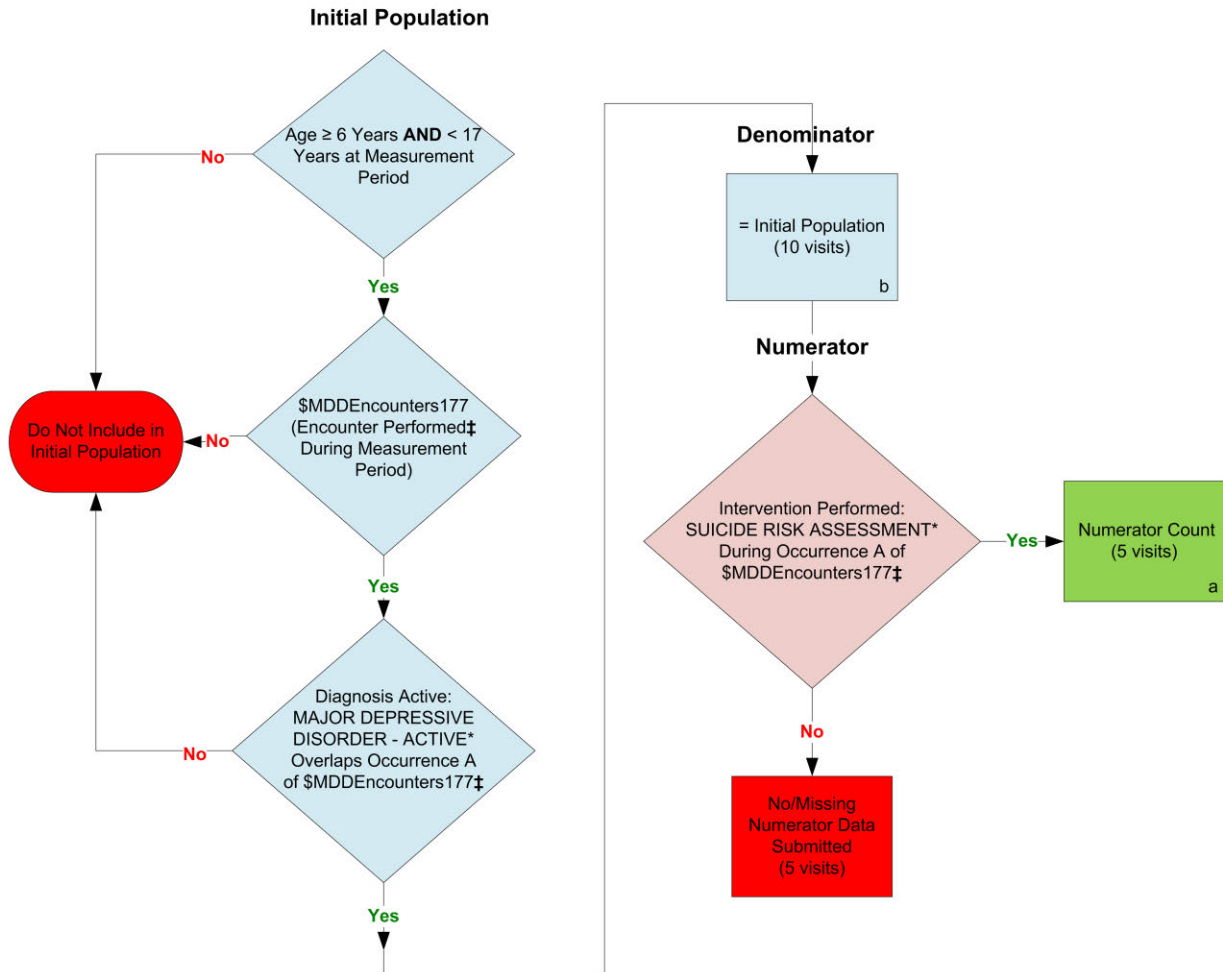


2014 eCQM Flow
Measure Identifier: CMS177v4.1

NQF 1365: Child and Adolescent Major Depressive Disorder (MDD): Suicide Risk Assessment



*Please refer to the specific section of the eCQM to identify the QDM data elements and associated value sets for use in reporting this eCQM.
 ‡For a listing of appropriate encounters, please refer to the Population Criteria and associated value sets as specific data elements have not been listed.

SAMPLE CALCULATION:

Performance Rate =

$$\frac{\text{Numerator (a=5 visits)}}{\text{Denominator (b=10 visits) - Denominator Exclusions (N/A) - Denominator Exceptions (N/A)}} = 50.00\%$$

2014 eCQM Flows

Measure Identifier: CMS177v4.1

NQF 1365: Child and Adolescent Major Depressive Disorder (MDD): Suicide Risk Assessment

Please refer to the specific section of the eCQM to identify the Population Criteria and associated value sets for use in reporting this eCQM.

1. Start Initial Population
2. Check Age:
 - a. If the AGE is greater than or equal to 6 years AND less than 17 years at measurement period equals No, do not include in Initial Population. Stop Processing.
 - b. If the AGE is greater than or equal to 6 years AND less than 17 years at measurement period, equals Yes, continue processing and proceed to check \$MDDEncounters177.
3. Check \$MDDEncounters177:
 - a. If \$MDDEncounters177 (QDM data element, OFFICE VISIT, or QDM data element, OUTPATIENT CONSULTATION, or QDM data element, FACE-TO-FACE INTERACTION, or QDM data element, PSYCH VISIT – DIAGNOSTIC EVALUATION, or QDM data element, PSYCH VISIT – FAMILY PSYCHOTHERAPY, or QDM data element, PSYCHOANALYSIS, or QDM data element, GROUP PSYCHOTHERAPY, or QDM data element, PSYCH VISIT - PSYCHOTHERAPY, during the measurement period) equals Yes, proceed to check Diagnosis Active.
 - b. If \$MDDEncounters177 (QDM data element, OFFICE VISIT, or QDM data element, OUTPATIENT CONSULTATION, or QDM data element, FACE-TO-FACE INTERACTION, or QDM data element, PSYCH VISIT – DIAGNOSTIC EVALUATION, or QDM data element, PSYCH VISIT – FAMILY PSYCHOTHERAPY, or QDM data element, PSYCHOANALYSIS, or QDM data element, GROUP PSYCHOTHERAPY, or QDM data element, PSYCH VISIT - PSYCHOTHERAPY, during the measurement period) equals No, do not include in the Initial Population. Stop Processing.
4. Check Diagnosis Active:
 - a. If the Diagnosis Active QDM data element, Major Depressive Disorder - ACTIVE, overlaps Occurrence A of \$MDDEncounters177 (QDM data element, OFFICE VISIT, or QDM data element, OUTPATIENT CONSULTATION, or QDM data element, FACE-TO-FACE INTERACTION, or QDM data element, PSYCH VISIT – DIAGNOSTIC EVALUATION, or QDM data element, PSYCH VISIT – FAMILY PSYCHOTHERAPY, or QDM data element, PSYCHOANALYSIS, or QDM data element, GROUP PSYCHOTHERAPY, or QDM data element, PSYCH VISIT - PSYCHOTHERAPY, during the measurement period) equals Yes, include in Initial Population and continue on to the Denominator.

- b. If the Diagnosis Active QDM data element, Major Depressive Disorder - ACTIVE, overlaps Occurrence A of \$MDDEncounters177 (QDM data element, OFFICE VISIT, or QDM data element, OUTPATIENT CONSULTATION, or QDM data element, FACE-TO-FACE INTERACTION, or QDM data element, PSYCH VISIT – DIAGNOSTIC EVALUATION, or QDM data element, PSYCH VISIT – FAMILY PSYCHOTHERAPY, or QDM data element, PSYCHOANALYSIS, or QDM data element, GROUP PSYCHOTHERAPY, or QDM data element, PSYCH VISIT - PSYCHOTHERAPY, during the measurement period) equals No, do not include in Initial Population. Stop Processing.
5. Start Denominator
 - a. Denominator equals the Initial Population. Denominator is represented by the Letter b in the sample calculation listed at the end of this document. Letter b equals 10 visits in the sample calculation.
6. Start Numerator
7. Check Intervention Performed:
 - a. If the Intervention Performed QDM data element, SUICIDE RISK ASSESSMENT, during Occurrence A of \$MDDEncounters177 (QDM data element, OFFICE VISIT, or QDM data element, OUTPATIENT CONSULTATION, or QDM data element, FACE-TO-FACE INTERACTION, or QDM data element, PSYCH VISIT – DIAGNOSTIC EVALUATION, or QDM data element, PSYCH VISIT – FAMILY PSYCHOTHERAPY, or QDM data element, PSYCHOANALYSIS, or QDM data element, GROUP PSYCHOTHERAPY, or QDM data element, PSYCH VISIT - PSYCHOTHERAPY, during the measurement period) equals Yes, include in the Numerator count. The Numerator is represented by the Letter a in the sample calculation listed at the end of this document. Letter a equals 5 visits in the sample calculation.
 - b. If the Intervention Performed QDM data element, SUICIDE RISK ASSESSMENT, during Occurrence A of \$MDDEncounters177 (QDM data element, OFFICE VISIT, or QDM data element, OUTPATIENT CONSULTATION, or QDM data element, FACE-TO-FACE INTERACTION, or QDM data element, PSYCH VISIT – DIAGNOSTIC EVALUATION, or QDM data element, PSYCH VISIT – FAMILY PSYCHOTHERAPY, or QDM data element, PSYCHOANALYSIS, or QDM data element, GROUP PSYCHOTHERAPY, or QDM data element, PSYCH VISIT - PSYCHOTHERAPY, during the measurement period) equals No, include in No/Missing Numerator Data Submitted. Stop Processing.

SAMPLE CALCULATION:

Performance Rate =

$$\frac{\text{Numerator (a=5 visits)}}{\text{Denominator (b=10 visits) – Denominator Exclusions (N/A) – Denominator Exceptions (N/A)}} = 50.00\%$$