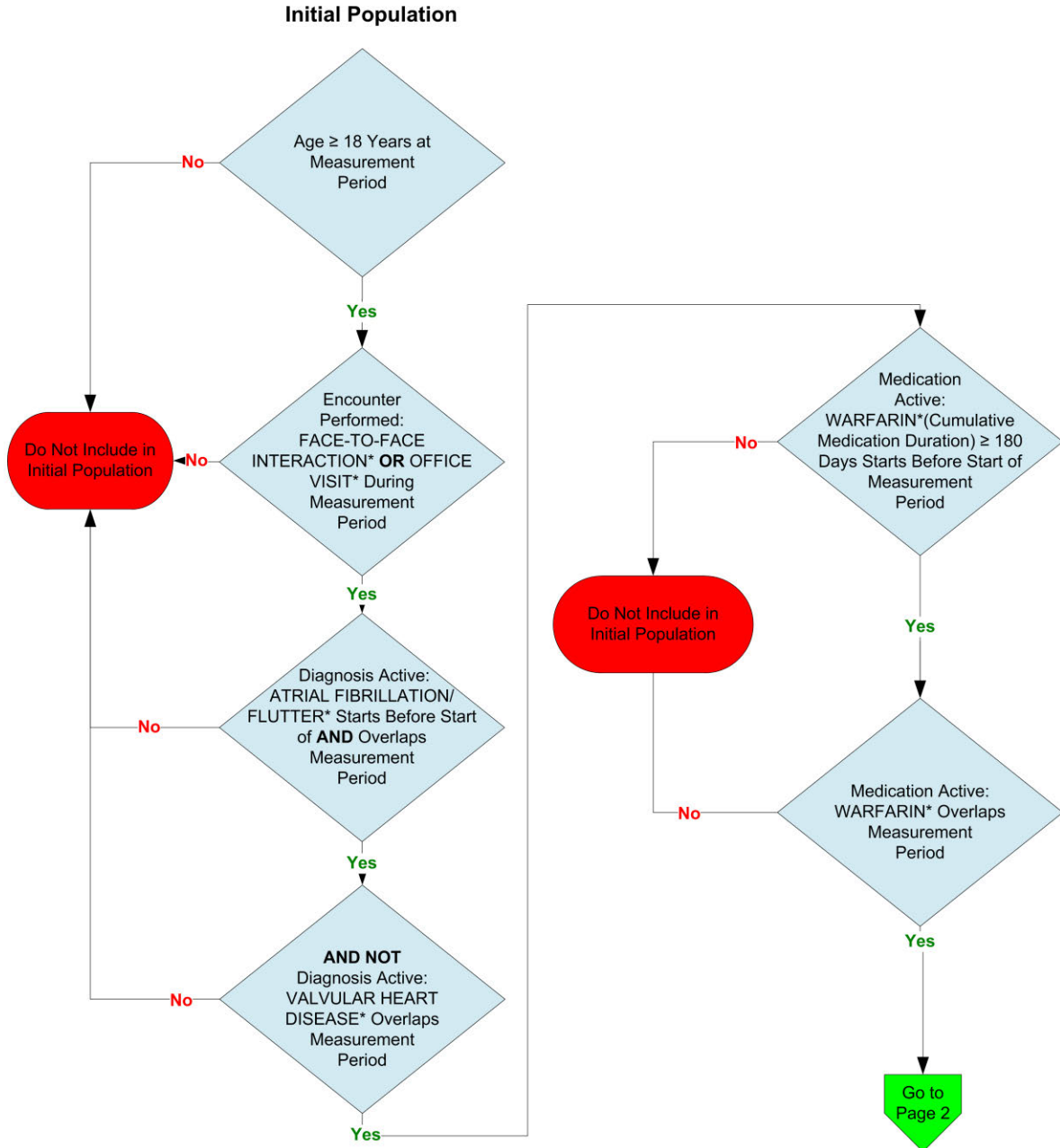


2014 eCQM Flow
Measure Identifier: CMS179v4

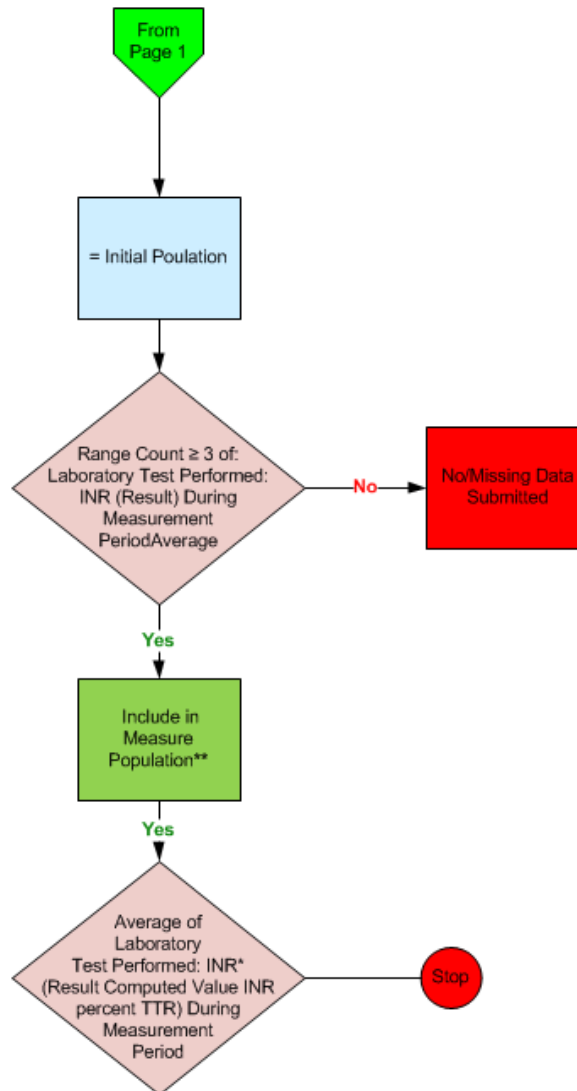
ADE Prevention and Monitoring: Warfarin Time in Therapeutic Range



*Please refer to the specific section of the eCQM to identify the QDM data elements and associated value sets for use in reporting this eCQM.

2014 eCQM Flow
Measure Identifier: CMS179v4

ADE Prevention and Monitoring: Warfarin Time in Therapeutic Range



CALCULATION INSTRUCTIONS TO OBTAIN THE MEASURE OBSERVATION

****Please note that the logic expressions in the body section of the HQMF of this measure should *not* be used to calculate this eCQM. They are only provided to represent the Population Criteria needed for the calculation. In order to calculate this eCQM correctly, only use the narrative specifications contained in the header section of the HQMF and the annotated database query found in the supplemental file named "CMS179v2_Supplemental_SQL_Logic_Reference.pdf".**

2014 eCQM Flows

Measure Identifier: CMS179v4

ADE Prevention and Monitoring: Warfarin Time in Therapeutic Range

Please refer to the specific section of the eCQM to identify the Population Criteria and associated value sets for use in reporting this eCQM.

1. Check Age:
 - a. If the AGE is greater than or equal to 18 years at measurement period equals No, do not include in Initial Population. Stop Processing.
 - b. If the AGE is greater than or equal to 18 years at measurement period equals Yes, proceed to check Encounter Performed.
2. Check Encounter Performed:
 - a. If the Encounter Performed QDM data element, FACE-TO-FACE INTERACTION, or QDM data element OFFICE VISIT, during measurement period equals Yes, proceed to check Diagnosis Active.
 - b. If the Encounter Performed QDM data element, FACE-TO-FACE INTERACTION, or QDM data element OFFICE VISIT, during measurement period equals No, do not include in Initial Population. Stop Processing.
3. Check Diagnosis Active:
 - a. If the Diagnosis Active QDM data element, ATRIAL FIBRILLATION/FLUTTER, starts before start of AND overlaps measurement period equals Yes, proceed to check AND NOT Diagnosis Active.
 - b. If the Diagnosis Active QDM data element, ATRIAL FIBRILLATION/FLUTTER, starts before start of AND overlaps measurement period equals No, do not include in Initial Population. Stop Processing.
4. Check AND NOT Diagnosis Active:
 - a. IF AND NOT Diagnosis Active QDM data element, VALVULAR HEART DISEASE overlaps measurement period equals Yes proceed to Medication Active.
 - b. IF AND NOT Diagnosis Active QDM data element, VALVULAR HEART DISEASE overlaps measurement period equals No, do not include in Initial Population. Stop Processing.
5. Check Medication Active:
 - a. If the Medication Active QDM data element, WARFARIN (cumulative medication duration) greater than or equal to 180 days starts before start of measurement period equals Yes, proceed to check Medication Active.
 - b. If the Medication Active QDM data element, WARFARIN (cumulative medication duration) greater than or equal to 180 days starts before start of measurement period equals No, do not include in Initial Population. Stop Processing.
6. Check Medication Active:

- a. If the Medication Active QDM data element, WARFARIN overlaps measurement period equals Yes, include in Initial Population.
 - b. If the Medication Active QDM data element, WARFARIN overlaps measurement period equals No, do not include in Initial Population. Stop Processing.
7. Proceed to Numerator
8. Check Range Count less than or equal to 3: Laboratory Test Performed
 - a. If Range Count greater than or equal to 3 of Laboratory Test Performed QDM data element, INR (result) during measurement period average equals No, include in the No/Missing Data Submitted count. Stop Processing.
 - b. If Range Count greater than or equal to 3 of Laboratory Test Performed QDM data element, INR (result) during measurement period average equals Yes, include in Measure Population.
9. Start Measure Population:
 - a. Beginning Measure Population equals the Initial Population. Continue on to determine Measure Population.
10. Measure Observation:
 - a. Average of Laboratory Test Performed QDM data element, INR (result computed value INR percent TTR) during measurement period. Stop Processing.

CALCULATION INSTRUCTIONS TO OBTAIN THE MEASURE OBSERVATION

****Please note that the logic expressions in the body section of the HQMF of this measure should *not* be used to calculate this eQIM. They are only provided to represent the Population Criteria needed for the calculation. In order to calculate this eQIM correctly, only use the narrative specifications contained in the header section of the HQMF and the annotated database query found in the supplemental file named "CMS179v2_Supplemental_SQL_Logic_Reference.pdf".**